

Chromosomal relationships among the native rodents (Cricetidae: Oryzomyini) of the Galápagos Islands, Ecuador

ROBERT C. DOWLER^{1*} AND MARCIA A. REVELEZ²

¹ Department of Biology, Angelo State University, San Angelo 76909. Texas, USA. E-mail: robert.dowler@angelo.edu.

² Museum of Texas Tech University, Lubbock 76409-3191. Texas, USA, E-mail: marcia.revelez@gmail.com.

*Corresponding author

Although the Galápagos Islands are recognized for their contribution to our understanding of evolutionary theory and have received the attention of scientists for over 185 years, our understanding of the native rodents there has been minimal relative to many other groups of organisms. Much of what we knew through most of the 20th century was based solely on species descriptions. Chromosome data has been limited to only *Nesoryzomys narboroughi* (2n = 32, FN (number of autosomal arms) = 50) and *Aegialomys galapagoensis* (2n = 56; FN = 58). We present the karyotypes of the only remaining extant species in the genus, *N. swarthi* (2n = 56; FN = 54) and *N. fernandinae* (2n = 44; FN = 54). Chromosomal banding reveals that extensive rearrangement has occurred within *Nesoryzomys*, including Robertsonian fusion and tandem fusion events but these alone cannot account for the diverse diploid numbers found within the genus. We propose that 1) *N. swarthi* represents the ancestral karyotype for the genus, similar to *A. galapagoensis*, 2) *N. swarthi* and *N. fernandinae* share the same fundamental number, suggesting divergence by Robertsonian fusions, and 3) *N. narboroughi* has the most derived karyotype, based on banding morphology and low diploid number.

Aunque las Islas Galápagos son reconocidas por su contribución a nuestra comprensión de la teoría de la evolución y han recibido la atención de los científicos durante más de 185 años, nuestra comprensión de los roedores nativos de dichas islas, ha sido mínima en comparación con muchos otros grupos de organismos. Gran parte del conocimiento obtenido durante la mayor parte del siglo XX se basó únicamente en descripciones de especies. Los datos cromosómicos se han limitado solo a *Nesoryzomys narboroughi* (2n = 32, FN (número de brazos autosómicos) = 50) y *Aegialomys galapagoensis* (2n = 56; FN = 58). Presentamos los cariotipos de las únicas especies que quedan en el género, *N. swarthi* (2n = 56; FN = 54) y *N. fernandinae* (2n = 44; FN = 54). El método de bandeado cromosómico revela que se ha producido un reordenamiento extenso dentro de *Nesoryzomys*, incluida la fusión robertsoniana y los eventos de fusión en tándem, pero estos por sí solos no pueden explicar los diversos números diploides que se encuentran dentro del género. Proponemos que 1) *N. swarthi* representa el cariotipo ancestral del género, similar a *A. galapagoensis*, 2) *N. swarthi* y *N. fernandinae* comparten el mismo número fundamental, lo que sugiere una divergencia por fusiones robertsonianas y 3) *N. narboroughi* tiene el cariotipo más derivado, basado en la morfología de bandas y en el bajo número diploide.

Keywords: *Aegialomys*; chromosomal rearrangements; G-bands; karyotypes; *Nesoryzomys*.

© 2021 Asociación Mexicana de Mastozoología, www.mastozoologiamexicana.org

Introduction

The Galápagos Islands have played a critical role in our understanding of evolution and have been the focus of thousands of studies dealing with the unique flora and fauna of this archipelago (Snell et al. 1996). Despite this, the rodent fauna has been poorly represented in scientific research relative to many Galápagos vertebrates. Until the late 20th century, original species descriptions were almost the only research published. This taxonomy of the native rodents has had a circuitous history with name changes at both the genus and species levels. Only a single study (Gardner and Patton 1976) has described cytogenetic data.

Taxonomic history of Galápagos rodents. Charles Darwin collected the first native rodents in the Galápagos Islands in 1835 on the island of Chatham (now known as San Cristóbal; Figure 1). The species, later described by Waterhouse (1839) as *Mus galapagoensis* (= *Aegialomys galapagoensis*), was never collected again on San Cristóbal (Clark 1984). Allen (1892) described a second species, *Oryzomys bauri* from the island of Barrington (now Santa Fé), recognizing both *bauri* and *galapagoensis* as belonging to the genus *Oryzomys*. In 1899, Oldfield Thomas described the first rodent from the

island of Indefatigable (now Santa Cruz) as *Oryzomys indefessus*, and Heller (1904) later elevated this species to a separate genus, *Nesoryzomys*, on the basis of skull morphology. A second species within the genus, *N. narboroughi*, also was described by Heller (1904) on the westernmost island, Narborough (now Fernandina). Osgood (1929) described a third, smaller species, *N. darwini*, from Santa Cruz and Orr (1938) described another large form, *N. swarthi*, from James Island (now Santiago). A fifth species in the genus, *N. fernandinae*, was described in 1979 based on owl pellet remains from the island of Fernandina (Hutterer and Hirsch 1979) and was small in body size.

In 1983, Patton and Hafner published the most comprehensive systematic treatise on Galápagos rodents to date, summarizing the systematic relationships based on cranial, stomach and male reproductive tract morphology, pelage color, allozymes, and karyotypes. Despite the number of data sets analyzed, their study was hampered because at the time the manuscript was written, only 2 native species of rodents, *Nesoryzomys narboroughi* and *Oryzomys bauri*, were known to be extant. *Nesoryzomys swarthi* was known from four specimens in the type series

collected in 1906 (Orr 1938) and a single skull collected in 1965 (Peterson 1966); however, the species was considered extinct by most (Patton and Hafner 1983; Clark 1984). Both *N. indefessus* on Santa Cruz and Baltra, and *N. darwini* on Santa Cruz had been considered extinct since the 1940's (Brosset 1963; Clark 1984; Key and Muñoz 1994). *Nesoryzomys fernandinae*, described solely on skulls (Hutterer and Hirsch 1979), could not be included in the study by Patton and Hafner (1983) as the species had not yet been described at the time the manuscript was submitted. The analysis of available data by Patton and Hafner (1983) suggested that the large-bodied *Nesoryzomys*, represented by *N. indefessus*, *N. narboroughi*, and *N. swarthi*, were variants of a single species that should be recognized as *N. indefessus* and that *Oryzomys bauri* and *O. galapagoensis* should be synonymized with *O. galapagoensis* having priority. Musser and Carleton (2005) concurred, placing *narboroughi* and *indefessus* in synonymy under *N. indefessus*, but recognizing *N. swarthi* as a valid taxon. Most recently, in revisions of oryzomyines (Weksler 2006; Weksler et al. 2006), *Nesoryzomys* was retained as a valid genus, but *Oryzomys galapagoensis* was placed with *O. xantheolus* in the genus *Aegialomys* (Prado and Percequillo 2018). Currently, the Galápagos native rodents are composed of *A. galapagoensis*, *N. darwini*, *N. fernandinae*, *N. indefessus* and *N. swarthi*, following Musser and Carleton (2005). *Nesoryzomys narboroughi* was recognized as a fifth species of the genus by Dowler (2015). Herein, we treat the genus *Nesoryzomys* as including five named species. Three additional undescribed species based on fossil remains are known from the islands of Rábida and Isabela (Steadman et al. 1991) but Moreira et al. (2020) reported only one from both of these islands. In addition to these Galápagos species, fossil remains of giant rats, genus *Megaoryzomys*, are known from Santa Cruz and Isabela (Steadman and Ray 1982; Steadman et al. 1991).

Chromosomes of Galápagos rodents. The only chromosomal data for native Galápagos rodents were published by Gardner and Patton (1976) for *Nesoryzomys narboroughi* and *Aegialomys galapagoensis*. The karyotype of *N. narboroughi* had a diploid number (2n) of 32 and a fundamental number (FN - number of autosomal arms) of 50 with mostly metacentric chromosomes. Its karyotype was strikingly different from that of *A. galapagoensis* (2n = 56, FN = 58) with mostly acrocentric chromosomes. The karyotype of *A. galapagoensis* was reported to be essentially identical to that of *A. xantheolus*, a mainland form from Peru and Ecuador. Not only was the karyotype of *N. narboroughi* considerably different from *A. galapagoensis* and *A. xantheolus*, but it was unlike any known oryzomyines at the time. On this basis, Gardner and Patton (1976) confirmed the generic status of *Nesoryzomys* first proposed by Heller (1904). Additional data from Patton and Hafner (1983) further supported the generic status of *Nesoryzomys* separate from *Oryzomys*. Other researchers (Ellerman 1941) have recognized *Nesoryzomys* as a subgenus of *Oryzomys*.

Field studies by Angelo State University researchers since 1995 have located living populations (Figure 1) of *Nesoryzomys fernandinae* on Fernandina (Dowler and Carroll 1996) previously known only from owl pellet material, and *N. swarthi*, previously considered extinct, on Santiago (Dowler et al. 2000). These discoveries have allowed an analysis of diploid and fundamental numbers of these previously unkaryotyped species. In addition, recent collections of all extant Galápagos species of rodents now permit the first comparison of chromosomal banding patterns to help elucidate the systematic relationships of these species.

Material and Methods

We surveyed the Galápagos rodent species on the islands of Fernandina, Santiago, and Santa Fé (Figure 1). In addition, we conducted survey trips to the islands of Baltra, Isabela, Rábida, San Cristóbal, and Santa Cruz that have had native rodent species historically or as recent fossils, but were unsuccessful in finding extant populations. Specimens were collected using Sherman live traps or small cage traps. All specimens were prepared as study skins or fluid-preserved specimens and deposited in the Angelo State Natural History Collections (ASNHC) of Angelo State University. Specific localities of capture and voucher specimen numbers are given in Appendix 1.

Up to four individuals were karyotyped from each of the three species of *Nesoryzomys* and *A. xantheolus*. Metaphase chromosomes were obtained in vivo from bone marrow following Lee and Elder (1980). Standard karyotypes were prepared and stained with conventional Giemsa and 8-10 spreads were examined for each species. Additional slides were prepared and counterstained with 4'-6-Diamidine-2'-phenylindole dihydrochloride (DAPI) with anti-fade mounting reagent for visualization of banded chromosomes. DAPI positive bands are indicative of A-T rich regions of heterochromatin. These banding patterns correspond to G-bands produced by trypsin digestion of chromosomes, and subsequently will be referred to as G-bands (Heng and Tsui 1993).

All chromosomes were examined on an Olympus Vanox epifluorescent microscope (Olympus, Melville, NY, U.S.A.). G-bands were examined using a DAPI filter (excitation 350 to 460 nm; emission, longpass, 520 nm). Images were obtained using the SPOT[®], CCD digital camera and Image Pro7 software package (Leeds Instruments, Irving, TX, USA). DAPI bands were obtained by inversion of the fluorescent image, creating banding patterns along the chromosomes. We examined karyotypes to determine phylogenetic relationships among species within the genus *Nesoryzomys*. For the purpose of establishing polarity of karyotypic characters, we used *Aegialomys* as an outgroup as recent molecular analyses have placed *Aegialomys* sister to *Nesoryzomys* (Parada et al. 2015; Castañeda-Rico et al. 2019; Brito et al. 2020).

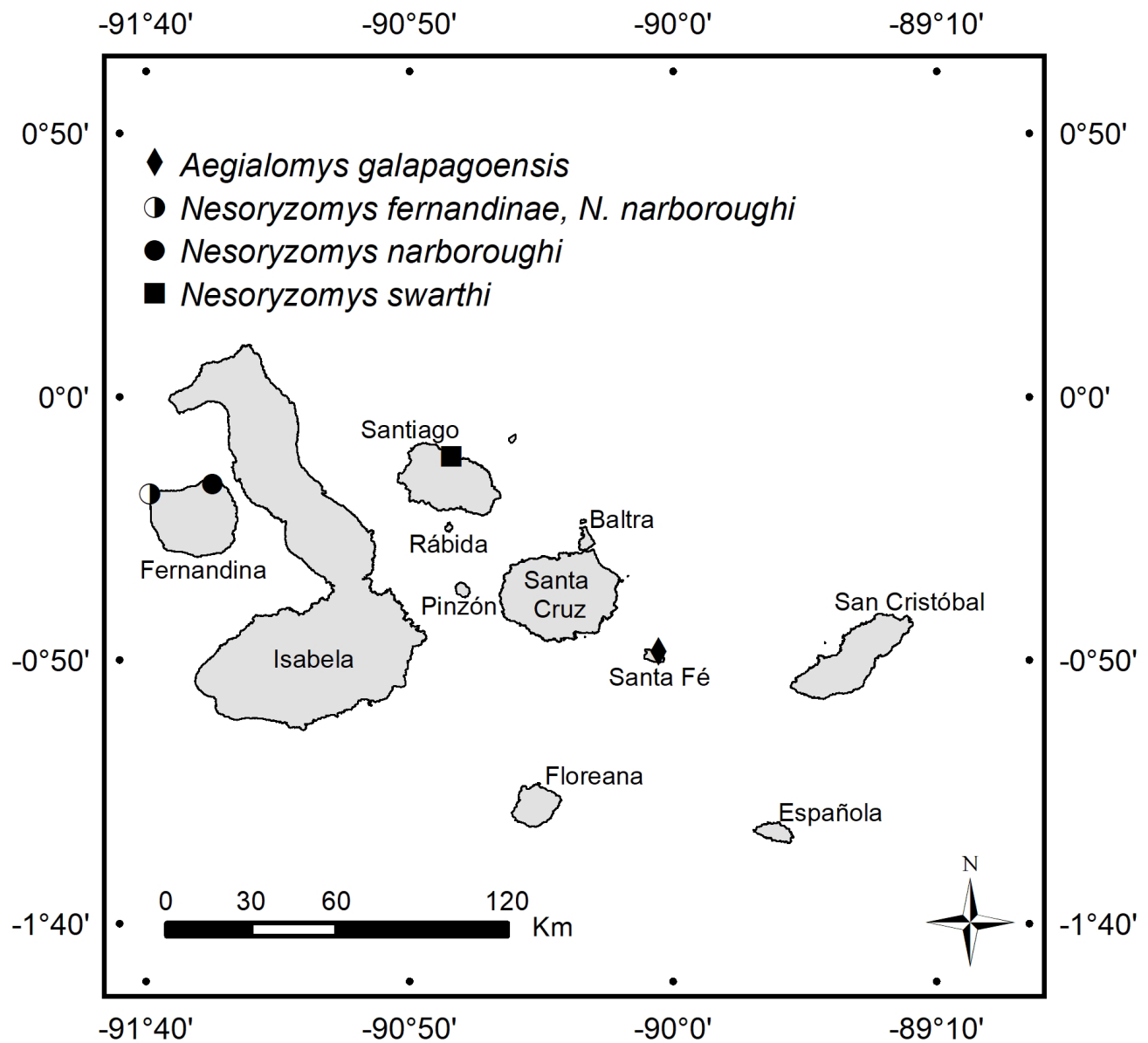


Figure 1. Map of Galápagos Islands, Ecuador with sampling localities of *A. galapagoensis* (diamond), *N. narboroughi* (closed circle, half circle), *N. swarthi* (square), and *N. fernandinae* (half circle) in the Galápagos Islands.

Results

Standard Karyotypes. The karyotype for *Aegialomys galapagoensis* is as previously reported by [Gardner and Patton \(1976\)](#). *Aegialomys galapagoensis* ($2n = 56$, $FN = 58$) is characterized by one distinctly large acrocentric pair and 24 pairs of acrocentric chromosomes ranging from large- to medium-sized, and two small metacentric pairs. The sex chromosomes, a medium-sized X and a small Y, are both acrocentric (Figure 2a).

The karyotype of *Nesoryzomys narboroughi* ($2n = 32$, $FN = 50$) presented herein is as described by [Gardner and Patton \(1976\)](#). It comprises eight metacentric pairs ranging from large- to medium-sized chromosomes, two subtelocentric pairs of large- and medium-sized chromosomes, five acrocentric pairs with one large pair and the others

small (Figure 2d). The X and Y chromosomes are the same as previously described for the genus.

Karyotypic analysis for the previously undocumented extant species of *Nesoryzomys* revealed strikingly different karyotypes from that of *N. narboroughi*. Unlike the low diploid number found in *N. narboroughi*, *N. swarthi* ($2n = 56$, $FN = 54$) has a karyotype composed completely of 27 pairs of acrocentric chromosomes, with one large pair and 26 pairs ranging from medium to small (Figure 2b). The X chromosome is medium-sized and acrocentric, whereas the Y chromosome is small and acrocentric. *Nesoryzomys fernandinae* ($2n = 44$, $FN = 54$) is characterized by six pairs of metacentric chromosomes ranging from large to medium-sized, and one large pair and 14 small pairs of acrocentric chromosomes (Figure 2c). The X chromosome is large and acrocentric and the Y is a small acrocentric chromosome.

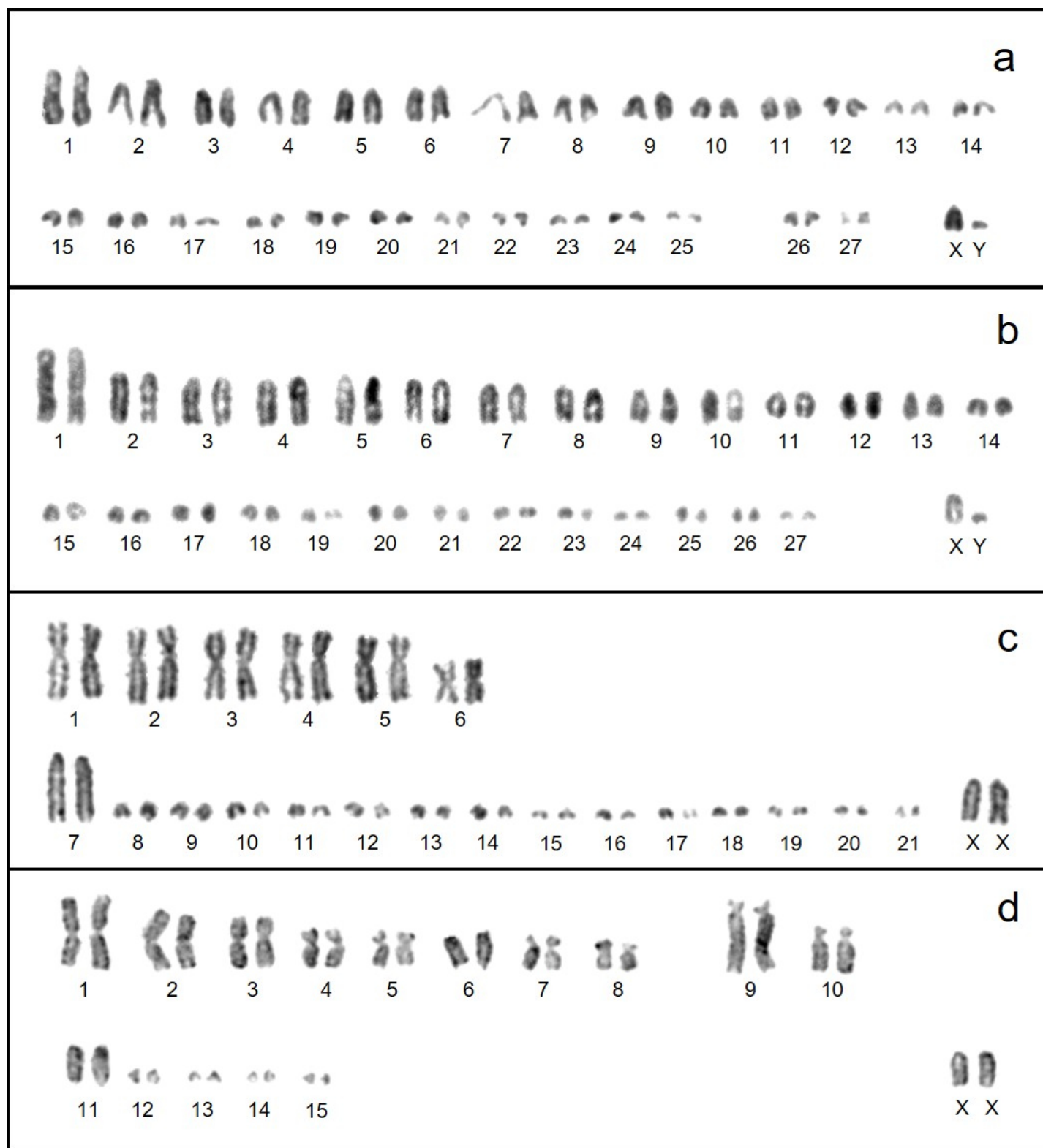


Figure 2. Representative standard karyotypes of the extant native Galápagos rodents. a) *Aegialaomys galapagoensis*, $2n = 56$, $FN = 58$, male. b) *Nesoryzomys swarthi*, $2n = 56$, $FN = 54$, male. c) *Nesoryzomys fernandinae*, $2n = 44$, $FN = 54$, female. d) *Nesoryzomys narboroughi* Heller, $2n = 32$, $FN = 50$, female. Chromosomes are numbered from longest to shortest, beginning with metacentrics and submetacentrics where present.

Banded Karyotypes. G-banded karyotypes (Figure 3) varied in quality but were sufficient to draw some conclusions regarding karyotypic rearrangements responsible for the observed changes in diploid and fundamental numbers. The karyotypes of *N. swarthi* and *N. fernandinae* have identical fundamental numbers, suggesting Robertsonian rear-

rangement events leading to the reduction in chromosome number and the appearance of biarmed chromosomes. Both *N. fernandinae* and *N. narboroughi* are similar in having biarmed chromosomes, but *N. fernandinae* has 15 pairs of acrocentric chromosomes while *N. narboroughi* has only five. The differences in fundamental numbers suggest tan-

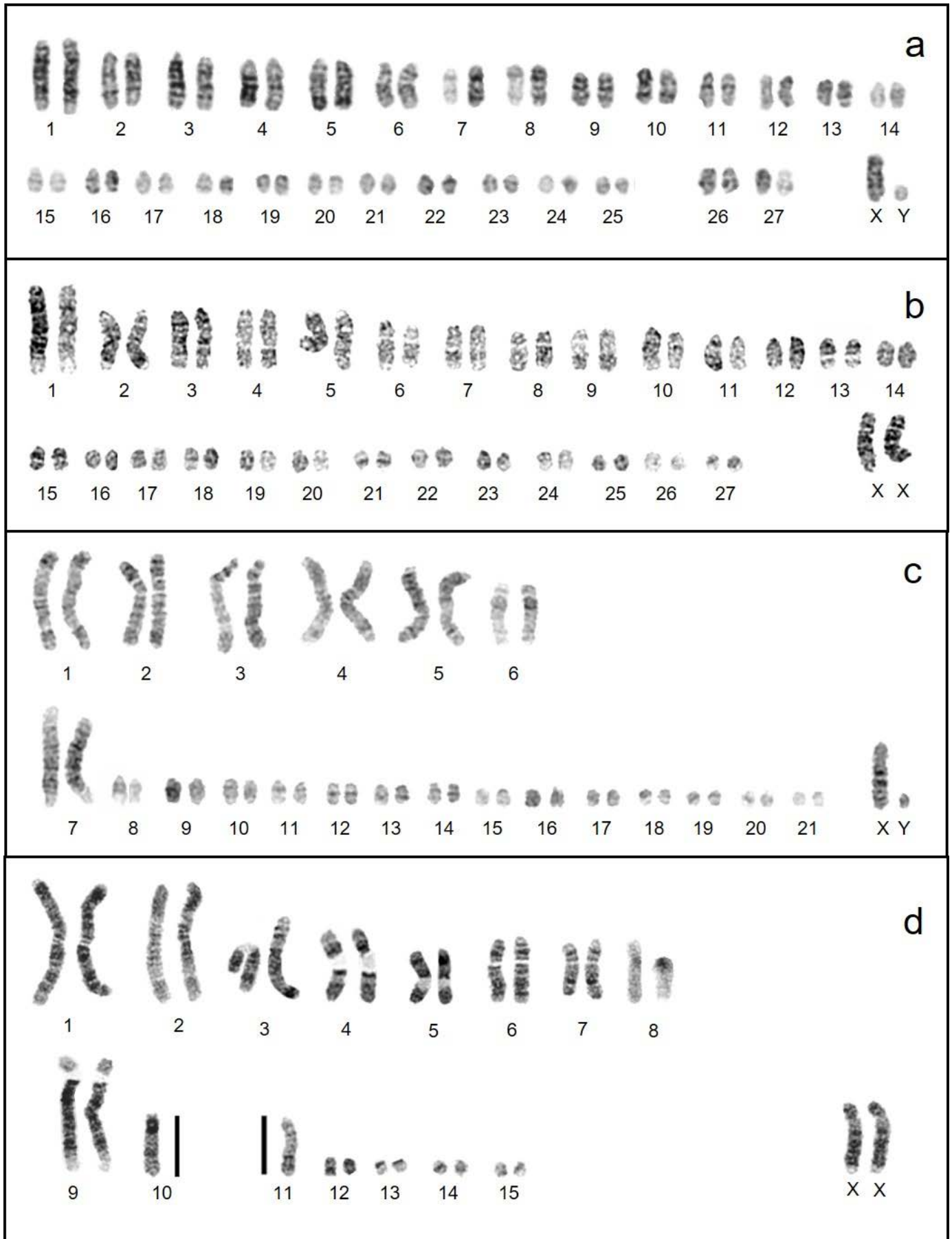


Figure 3. Representative DAPI karyotypes of the extant native Galápagos rodents. a) *Aegialomys galapagoensis*, male. b) *Nesoryzomys swarthi*, female. c) *Nesoryzomys fernandinae*, male. d) *Nesoryzomys narboroughi*, female. Chromosomes are numbered from longest to shortest, beginning with metacentrics and submetacentrics where present.

dem fusions/fissions, inversions, translocations, or whole-arm heterochromatin additions or deletions. Homologous chromosomes and portions of chromosomes are evident and a composite karyotype of the G-banded chromosomes for the four species was constructed using some of the larger chromosomes (Figure 4).

Robertsonian translocations are evident in some cases across all four extant species of Galápagos rodents. Chromosome 9 in *N. narboroughi* (Figure 3d) is a large, subtelocentric chromosome explained by the fusion of a small acrocentric chromosome to the largest acrocentric chromosome that is found to be homologous in all other species (Figure 4g). Chromosome 7 in *N. narboroughi* (Figure 3d) is a medium-sized metacentric chromosome that corresponds to smaller, acrocentric chromosomes in *A. galapagoensis*, *N. swarthi*, and *N. fernandinae* (Figure 4f). Homologous metacentric chromosomes were identified between *N. fernandinae* and *N. narboroughi* for Chromosomes 6 and 8 respectively, determined by the fusion of acrocentric chromosomes in *A. galapagoensis* and *N. swarthi* (Figure 4e). Chromosome 10 in *N. narboroughi* is a medium-sized subtelocentric chromosome (Figure 3d), its longer arm detected in both *A. galapagoensis* and *N. swarthi* but not *N. fernandinae* (Figure 4i). Chromosome 11 is the largest acrocentric chromosome in *N. narboroughi* (Figure 3d) and was identified in *N. swarthi* but could not be detected in other species (Figure 4j).

Chromosome 1 in both *N. fernandinae* and *N. narboroughi* is large and metacentric and nearly identical between

the species, with the exception of a small addition on the end of *N. narboroughi* (Figure 4a), indicated by an asterisk (*). Although some homologous portions of these chromosomes could be identified from both *N. swarthi* and *A. galapagoensis*, there are regions (*) that could not, either because of tandem fusions of smaller acrocentric chromosomes or insufficient staining quality. Similar observations can be made for Chromosome 3 in both *N. fernandinae* and *N. narboroughi* (Figure 4c).

Many of the chromosomes in *N. narboroughi* (Figure 3d) were found to be unique with variations that could not be found in the other species. It is possible that heterochromatic additions may play a role in these differences. Chromosome 4 in *N. narboroughi* is a metacentric chromosome with a homologous portion found in *A. galapagoensis* and *N. swarthi* but could not be identified in *N. fernandinae*. The lighter portion indicated by an asterisk (*) in Figure 4h contains an area considered to be a heterochromatic addition. Chromosome 5 in *N. narboroughi* could not be resolved with other species, but likely contains a heterochromatic addition as seen in Chromosome 4, based on banding pattern. All species within *Nesoryzomys* possess an X chromosome that is mostly identical to each other when compared to *Aegialomys*, but with *N. narboroughi* differing slightly by a possible heterochromatic addition (Figure 2d).

Discussion

This is the first study to include karyotypes for all extant endemic rodent species of the Galápagos Islands. Our

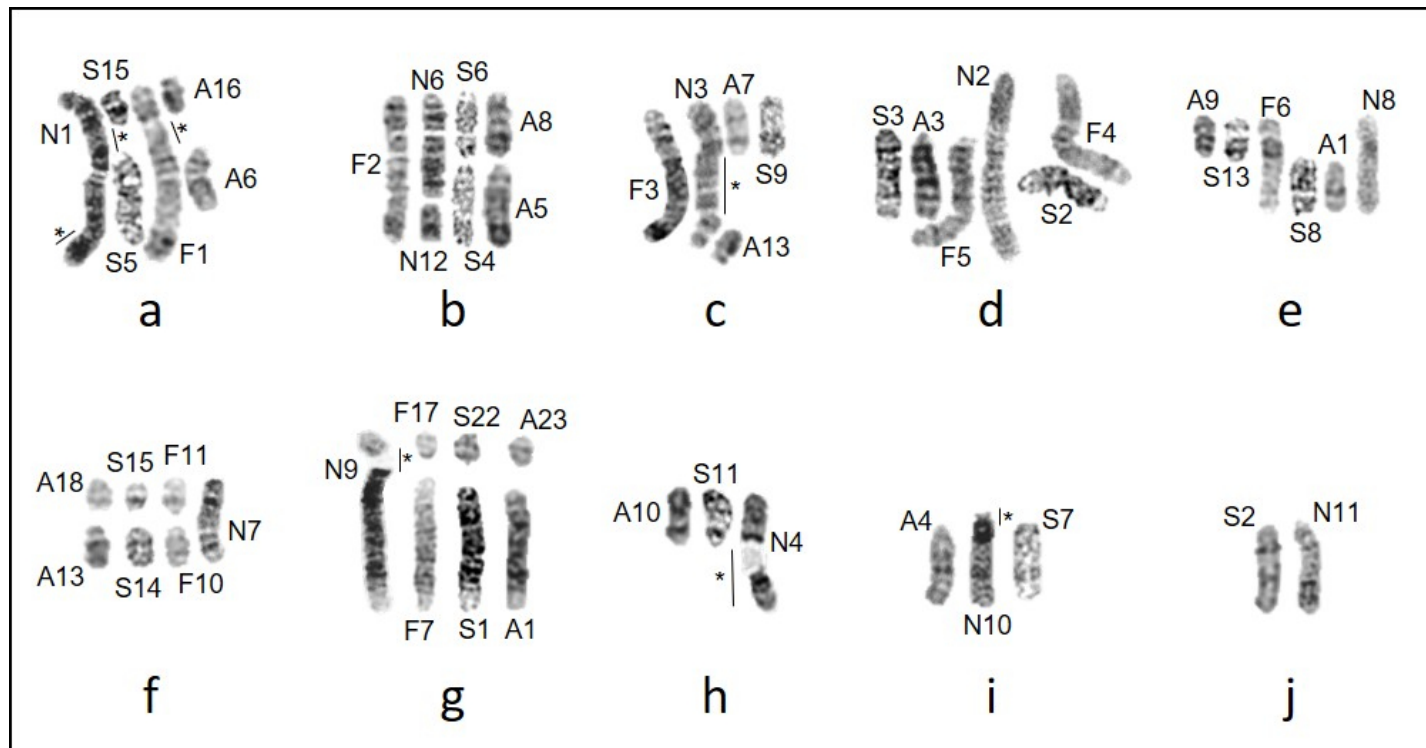


Figure 4. Comparison of banded haploid complements of the endemic Galápagos rodents for *Aegialomys galapagoensis*, *Nesoryzomys swarthi*, *N. fernandinae*, and *N. narboroughi*. Figures a-j are composites where chromosome numbers correspond to those assigned to karyotypes in Figure 2 and prefixes represent corresponding species: A = *A. galapagoensis*, S = *N. swarthi*, F = *N. fernandinae*, N = *N. narboroughi*. Areas indicated by an asterisk (*) represent unique areas of chromosomes with unresolved homologies.

karyotype for *A. galapagoensis* agrees with those reported by [Gardner and Patton \(1976\)](#) where they suggested that *A. galapagoensis* and *A. xantheolus* were identical in all aspects and perhaps were conspecific. [Moreira et al. \(2020\)](#), however, pointed out that [Prado and Percequillo \(2016\)](#) determined that the same specimens karyotyped as *A. xantheolus* by [Gardner and Patton \(1976\)](#) were from Peru and in fact belong to *A. baroni* and *A. ica*. Despite the fact that true *A. xantheolus* from Ecuador and northern Peru have yet to be karyotyped, the lack of apparent chromosomal variation among the three other species suggests that *Aegialomys* may be karyotypically monomorphic. [Prado and Percequillo \(2018\)](#) found that *A. galapagoensis* was sister to the two southern mainland forms *A. baroni* and *A. ica*, concluding that it is a unique species and lineage.

With respect to *Nesoryzomys*, surveys by our field teams and others over the last several decades suggest the two species from the island of Santa Cruz, *N. darwini* and *N. indefessus* (also from Baltra) likely have been extinct since the 1930s ([Patton and Hafner 1983](#); [Clark 1984](#); [Dowler et al. 2000](#)). In addition, three undescribed species occurred on the island of Rábida and Isabela but are extinct ([Steadman et al. 1991](#)). Thus, our karyotypic knowledge of the known *Nesoryzomys* fauna of eight species is restricted to those reported here. In contrast to the chromosomes of *Aegialomys*, our study reveals striking intrageneric variation in the karyotype of *Nesoryzomys*. Previously known only from *N. narboroughi*, its aberrant arrangement of mostly biarmed chromosomes was used to establish generic status ([Gardner and Patton 1976](#); [Patton and Hafner 1983](#); [Suárez-Villota et al. 2013](#); [Moreira et al. 2020](#)). We report two new additional, distinct karyotypes of the other *Nesoryzomys* that provide insight into the origin of such a unique arrangement and demonstrate a closer relationship with other oryzomyine sister taxa.

Of the four major clades (Clades A-D) described in the monophyletic lineage of oryzomyines ([Weksler 2006](#)), *Nesoryzomys* falls within Clade D. Within that group, *Nesoryzomys* is placed in the *Aegialomys*-*Megalomys*-*Melanomys*-*Nesoryzomys*-*Oryzomys*-*Sigmodontomys*-*Tanyuromys* clade ([Pine et al. 2012](#); [Salazar-Bravo et al. 2016](#); [Timm et al. 2018](#)) and most phylogenies agree that *Nesoryzomys* is sister to *Aegialomys* ([Weksler 2003](#); [Hanson and Bradley 2008](#); [Pine et al. 2012](#); [Machado et al. 2014](#); [Parada et al. 2015](#); [Steppan and Schenk 2017](#); [Timm et al. 2018](#); [Castañeda-Rico et al. 2019](#); [Brito et al. 2020](#)). *Aegialomys galapagoensis* shares the same $2n = 56$ karyotype as the mainland forms *A. ica* and *A. baroni* ([Gardner and Patton 1976](#); [Prado and Percequillo 2018](#)), and *N. swarthi* but differs in fundamental numbers, $FN = 58$ in *Aegialomys* and $FN = 54$ in *N. swarthi*. The karyotype of *A. galapagoensis* comprises mostly acrocentric autosomes but has two small metacentric chromosomes that are absent in the entirely acrocentric karyotype of *N. swarthi*. No small metacentric chromosomes were found in any of the three species of *Nesoryzomys* that we examined, suggesting that these form a chromosomal group dis-

tinct from that of *Aegialomys*. Homologies in *N. swarthi* are not apparent for the two small metacentric chromosomes in *Aegialomys*. Some molecular phylogenies have found *Nesoryzomys* to be sister with *Sigmodontomys* and *Melanomys* and these sister to *A. xantheolus* ([Weksler 2003](#); [Machado et al. 2014](#); [Salazar-Bravo et al. 2016](#)). Based on chromosomal morphology, *Melanomys* ($2n = 56$, $FN = 58$) differs from *N. swarthi* by its two small metacentric autosomes and subtelocentric sex chromosomes ([Gardner and Patton 1976](#)). All sex chromosomes found within *Nesoryzomys* are acrocentric. The karyotype of *N. swarthi* is identical with *Sigmodontomys alfari* ($2n = 56$, $FN = 54$) as described by [Gardner and Patton \(1976\)](#). *Sigmodontomys aphrastus* was elevated to generic status as *Tanyuromys aphrastus* by [Pine et al. \(2012\)](#), and *S. alfari* remained sister to *Melanomys*. No known karyotype for *Tanyuromys* is available for comparison. The relationship between *Melanomys* and *Sigmodontomys* has been found to be paraphyletic and new species have been described ([Timm et al. 2018](#); [Pine et al. 2012](#)). The identical karyotype shared between *S. alfari* and *N. swarthi* could be convergent; however, future comparison of chromosomal rearrangements between these two could provide valuable insight on the chromosomal evolution of *Nesoryzomys*.

In considering *Aegialomys* as sister to *Nesoryzomys*, small metacentric chromosomes are absent in all karyotypes of *Nesoryzomys* and some small acrocentric chromosomes would likely be the result of a fission event that occurred sometime in the past. Given that up to five other endemic species are now extinct, it is probable that one of these may have retained a chromosomal arrangement identical to *Aegialomys*. These gaps will remain problematic in completely understanding the chromosomal evolution of the Galápagos endemic rodent fauna. With the available evidence, we propose that the $2n = 56$ karyotype is basal for the *Nesoryzomys*-*Aegialomys* clade (Figure 5).

[Patton and Hafner \(1983\)](#) concluded that the three large forms of *Nesoryzomys* (*N. indefessus*, *N. narboroughi*, and *N. swarthi*) all allopatrically distributed on different islands were conspecific based on similarity of specimen morphology. Diploid and fundamental numbers for both *N. swarthi* and *N. narboroughi* differ significantly, leaving no question that they are distinct species, and this also has been supported in all molecular studies that included both of these species ([Weksler 2003](#); [Pine et al. 2012](#); [Leite et al. 2014](#); [Parada et al. 2015](#); [Steppan and Schenk 2017](#); [Castañeda-Rico et al. 2019](#); [Brito et al. 2020](#)). The question of whether *N. indefessus* is conspecific with *N. narboroughi* as proposed by [Patton and Hafner \(1983\)](#) and adopted by [Musser and Carleton \(2005\)](#) is yet to be answered. Given that each species in the genus thus far has had such uniquely distinct karyotypes, we believe that there is a strong likelihood that *N. indefessus*, endemic to Santa Cruz and Baltra, would differ from the other large *Nesoryzomys* and should be recognized as such ([Dowler 2015](#)). Future molecular analysis that includes *N. indefessus* may be able to settle this issue.

Both *N. fernandinae* and *N. narboroughi* on Isla Fernandina also differ markedly in diploid and fundamental number. The karyotype for *N. fernandinae* represents the only chromosomal data for the small body-size form in *Nesoryzomys*, the other being the presumed extinct *N. darwini*. This is the only case of sympatry among extant forms and both the karyotypic and morphological differences rule out any likelihood of hybridization between the two.

In addition to the obvious geographic barriers between island populations of organisms, chromosomal rearrangements are known to serve as reproductive barriers and can become established over short periods of time (Searle 1993; Moreira *et al.* 2020). Gardner and Patton (1976) established the foundation for understanding chromosomal evolution among the Sigmodontinae and suggested that the general trend for chromosomal evolution was one of decrease in both diploid and fundamental numbers. Moreira *et al.* (2020) concluded that chromosomal evolution of oryzomyines differ by a large variety of rearrangements and that diploid numbers both decrease and increase without any distinguishable pattern. In the case of the Galápagos endemic rodent fauna, we propose that speciation on the archipelago has resulted in a decrease in both diploid and fundamental numbers resulting from potentially rapid divergence as colonists arrived on unoccupied islands. Some of these speciation events may have been facilitated by chromosomal rearrangements (King 1993; Britton-Davidian *et al.* 2000; Wang and Lan 2000).

Of the 141 oryzomyine species for which karyotypic data exist, Moreira *et al.* (2020) reported that 55 included some chromosomal banding, but banded karyotypes only

exist for members of *Oryzomys* outside the Galápagos rodent fauna (Haiduk *et al.* 1979) in the *Aegialomys-Megalomys-Melanomys-Nesoryzomys-Oryzomys-Sigmodontomys-Tanyuromys* clade (Pine *et al.* 2012; Salazar-Bravo *et al.* 2016; Timm *et al.* 2018). This is the first study to include banded karyotypes for all extant endemic rodent species of the Galápagos Islands. Banding revealed extensive chromosomal rearrangements in the Galápagos rodents, a pattern that is clear in many other oryzomyines (Suárez-Villota *et al.* 2013; Suárez *et al.* 2015; Pereira *et al.* 2016). Despite the utility of chromosome banding as a tool in identifying and examining interspecies homologies (Damas *et al.* 2021), lack of banding data from those considered close relatives to the Galápagos rodents makes comparisons impossible at this time.

We identified numbers and types of chromosomal rearrangements using the largest chromosomes found in *N. fernandinae* and *N. narboroughi* (Figure 4) and demonstrate Robertsonian fusions, tandem fusions, other translocations, and some that could not be identified from banding sequences. The banding patterns between *N. fernandinae* and *N. narboroughi* revealed at least three whole chromosome homologies, at least one whole arm translocation, and evidence of tandem fusions when compared to *N. swarthi* and *A. galapagoensis* (Figure 4). Banding found in *N. narboroughi* revealed unique regions not found in any of the other Galápagos rodents with large heterochromatic additions. The difference in $2n$ but not FN between *N. swarthi* and *N. fernandinae* also suggests Robertsonian fusions have occurred. These rearrangements could be supported further with C-banding, but we were unable to obtain

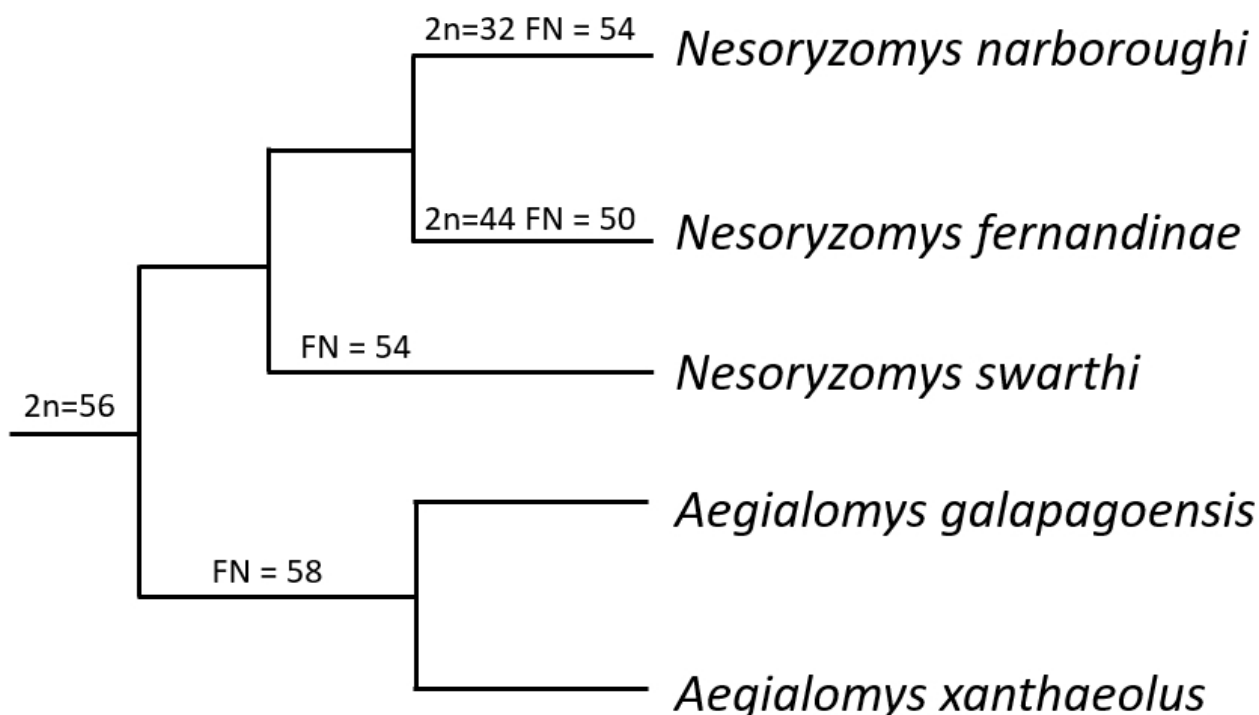


Figure 5. Cladogram depicting phylogeny of the native Galápagos rodents and *Aegialomys xanthaeolus* with chromosomal diploid ($2n$) and fundamental numbers (FN) included.

these data. [Castañeda-Rico et al. \(2019\)](#) determined these two species to be sister to *N. narboroughi* based on mtDNA D-loop sequence data, as did [Steppan and Schenk \(2017\)](#) based on concatenated sequences of multiple genes. In contrast, *N. narboroughi* has been placed with *N. swarthi* in other molecular phylogenies ([Parada et al. 2015](#); [Brito et al. 2020](#)), but with lower statistical support. Other molecular studies only have included two of the three species in their molecular analyses.

[Moreira et al. \(2020\)](#) examined the karyotypic variation among all Oryzomyini rodents and found the majority of species are composed of acrocentric chromosomes with a diploid number between 48 and 64 with fundamental numbers ranging from 56 to 74. We use this generality to examine the evolutionary history of the native rodent fauna of the Galápagos Islands. Given that the chromosomal arrangements among the four extant species suggest a progressive reduction in the diploid number, the completely acrocentric karyotype of *N. swarthi* ($2N = 56$, $FN = 54$) should be regarded as the most representative of the ancestral form of the genus (Figure 5). The karyotypes of *N. fernandinae* ($2n = 44$, $FN = 54$) and *N. narboroughi* ($2n = 32$, $FN = 50$) represent derived species with different chromosomal rearrangements resulting in both metacentric and subtelocentric chromosomes. Based on banding patterns, it is plausible to infer that *N. fernandinae* represents an intermediate stage of the genus, with rearrangements that carried into *N. narboroughi*. [Garagna et al. \(2014\)](#), when examining the Robertsonian phenomenon in the house mouse (*Mus*), stated that a high occurrence rate of Robertsonian fusions and whole arm translocations suggest that there are inherent genomic traits in the centromeric region that promote these rearrangements. The differences in sex chromosomes between *Nesoryzomys* and *Aegialomys* further support that the ancestral form for *Nesoryzomys* is unique relative to present day *Aegialomys* occurring on the islands. [Searle \(1993\)](#) suggested that mutations in chromosomal races that lead to metacentric chromosomes contribute to increasing reproductive isolation and, in time, to speciation.

Colonization of oryzomyine rodents in the Galápagos Islands represents the greatest overwater dispersal distance for terrestrial mammals ([Pine et al. 2012](#)) and these rodents are the only terrestrial mammals that have naturally colonized and diversified within the archipelago. *Nesoryzomys* is known to occur on at least 6 of the 13 major islands ([Harris and Macdonald 2007](#)), which date from up to 3.5 to 4 mya to 60,000 ya ([Geist et al. 2014](#)). [Garagna et al. \(2014\)](#) stated that the best place to search for extremes in chromosomal variation is in geographically isolated populations. [Piálek et al. \(2005\)](#), in examining chromosomal variation in European *Mus*, identified 'islands' of *Mus* occurring in the Swiss Alps. The standard karyotype of *Mus* is an all telocentric karyotype ($2n = 40$), but metacentric rearrangements occurred in these 'island' populations and these polymorphisms have the potential to become fixed. In laboratory stocks of *Mus domesticus*, it was observed that once a Rob-

ertsonian fusion occurred, it acted as an 'infectious agent' and other fusions quickly followed, something that could occur in wild populations ([Nachman and Searle 1995](#)). [King \(1993\)](#), in discussing the role of chromosome change and species evolution, stated that it is evident that the formation of Robertsonian fusion events leading to metacentric chromosomes arise and spread in populations, constituting one of the main sources for karyotype evolution in mammals. Centromeres and telomeres play a role in maintaining genome stability and changes in chromosome number can result in centromere repositioning over time ([Damas et al. 2021](#)). These can become fixed by selection when fusion events are associated with changes in gene expression or meiotic drive and act as a reproductive barrier and promote speciation. A Robertsonian event may lead to a significant reduction in the DNA sequence that organizes the centromere making it difficult to regenerate functional telocentric chromosomes ([Garagna et al. 1995](#)). This suggests a tendency of ancestral all-telocentric karyotypes moving toward accumulation of metacentric chromosomes but without reverse tendencies towards fission events that result in telocentric chromosomes, once a largely metacentric karyotype has been established ([Garagna et al. 2014](#)). The chromosomes of the endemic Galápagos rodent fauna appear to follow these patterns.

The colonization history of native rodents in the Galápagos Islands and its timing continue to be uncertain. Most have supported the idea of three separate colonization events from mainland South America or Central America for each of the rodent genera, with *Megaoryzomys* the oldest, *Nesoryzomys* next and more recently, *Aegialomys* ([Patton and Hafner 1983](#); [Parent et al. 2008](#); [Pine et al. 2012](#)). For the extant genera, *Aegialomys* and *Nesoryzomys*, molecular phylogenies suggest they diverged in the Pliocene about 3.84 mya based on mtDNA D-loop sequences ([Castañeda-Rico et al. 2019](#)), although others have estimated their divergence at about 2.8 mya ([Parada et al. 2015](#)) and in the Pleistocene from 1.49 mya ([Machado et al. 2014](#)) and 2.4 mya ([Parada et al. 2013](#)). Some of this discrepancy is a result of [Castañeda-Rico et al. \(2019\)](#) using an origin of the Galápagos in their calculations of 5 mya based on [Geist et al. \(2014\)](#) whereas [Machado et al. \(2014\)](#) used 4 mya based on [Geist \(1984\)](#). Species divergences within *Nesoryzomys* occurred in the early Pleistocene about 2.23 mya between the clade represented by *N. swarthi*/*N. fernandinae* and *N. narboroughi*. This was followed by the divergence of *N. swarthi* and *N. fernandinae* at 1.58 mya ([Castañeda-Rico et al. 2019](#)). Most other studies that have attempted to date the divergence of oryzomyines also have placed the divergence of *Nesoryzomys* species in the Pleistocene ([Parada et al. 2013](#); [Leite et al. 2014](#); [Parada et al. 2015](#)).

An explanation of the sequence of colonization events that resulted in the seven known taxa of *Nesoryzomys* is likely impossible based on the geologic history of the Galápagos Islands. Recent studies by [Ali and Aitchison \(2014\)](#) and [Geist et al. \(2014\)](#) proposed that this archipelago's pat-

tern of subsidence and sea level changes have resulted in multiple small and large previous islands that were available for further isolation of evolving taxa. This phenomenon has alternated with sea level declines that allowed movement of populations across previous oceanic barriers between currently recognized islands. [Geist et al. \(2014\)](#) proposed that for lava lizards (*Microlophus*), both dispersal and vicariant allopatric speciation occurred based on the subsidence and sea level changes that shifted the amount of land area in the Galápagos Islands. For *Nesoryzomys*, a similar phenomenon may well have occurred. Dispersal and allopatric speciation allowed the oryzomyines that first colonized the islands, potentially *Sigmodontomys* or related forms, to diverge from these previous mainland ancestors. Following that event, a series of speciation events occurred, some by further dispersal to newly arising islands and others by vicariance. As sea level first declined during glacial events to unite land masses, such as the uniting of the central 'core' islands that included Santa Fé, Santiago, Isabela, and Fernandina, overland dispersal could occur for once isolated forms. As sea level then rose during interglacial periods, these larger islands were once again divided, isolating their flora and fauna. [Ali and Aitchison \(2014\)](#) compare patterns of distribution for most of the nonmammalian vertebrates (reptiles and Darwin's finches) and *Scalasia* land plants of the Galápagos. The known endemic rodents in the genus *Nesoryzomys* all follow a distribution in the 'core' area of the archipelago. These patterns of recurring isolation followed by widespread dispersal could well have provided a sufficient mechanism for the origin of the extensive chromosomal shuffling that is apparent in the three extant *Nesoryzomys* species and that likely occurred among all the existing forms of the genus.

Many oryzomyine rodents possess species-specific karyotypes ([Gardner and Patton 1976](#); [Suárez-Villota et al. 2013](#); [Di-Nizo et al. 2017](#); [Moreira et al. 2020](#)) and provide ample evidence that chromosomal rearrangements contribute to the process of speciation ([Damas et al. 2021](#)). Thus, identification of chromosomal rearrangements contributes to our understanding of chromosomal evolution within *Nesoryzomys*. The role of chromosomal rearrangements has been a point of discussion for over half a century and chromosomes remain a valuable tool in systematics as they combine both morphological and genetic character traits, and represent the elements of variation and heredity ([Bakloushinskaya 2016](#)). [Damas et al. \(2021\)](#) suggested that chromosomal rearrangements are both a critical mechanism of reproductive isolation and a source of genetic variation that contributes to novel and adaptive traits during and after speciation has occurred. Adaptability applies not only to the organism as a whole but also to the genome, the structure of which changes under selection ([Bakloushinskaya 2016](#)). Charles Darwin, in formulating his concept of natural selection that originated from observations made on the Galápagos Islands, knew that natural selection occurs because of variation in a population ([Darwin 1859](#)).

Yet, the mechanisms for which chromosomal variation give way to speciation is still not clearly understood. With few exceptions, both the 2n and FN are relatively constant in the known karyotypes found within the *Aegialomys-Megalomys-Melanomys-Nesoryzomys-Oryzomys-Sigmodontomys-Tanyuromys* clade, suggesting a stable karyotype that is not drastically changed by speciation events. The lone exception from those taxa that have karyotypic data is the genus *Nesoryzomys*. Based on what we understand of the chromosomal variation in these endemic rodents of the Galápagos Islands, chromosomal rearrangements either result from or play a key role in island speciation and adaptability of a population over time.

Acknowledgments

We dedicate this paper to David J. Schmidly, the Ph.D. advisor of one of us (RCD), our respected colleague for many decades, and a friend. Dr. Schmidly made many contributions to a better understanding of mammals, the history of North American mammalogy, and the conservation of biodiversity, as well as his inspiring (MAR) and training of another generation of mammalogists. These are a fitting legacy capping off a remarkable career.

Our thanks to the staff of the Estación Científica Charles Darwin and the Charles Darwin Foundation. Permits were provided by the Parque Nacional Galápagos. TAME Airlines gave discounts for researchers. Funding was provided by the National Geographic Society (#6517-99) and the Angelo State University Research Enhancement Grant Program. Many thanks go to the field team who helped collect specimens including J. Flanagan, N. Dexter, and S. Hart. Special thanks to the Department of Biology at Texas Tech University for allowing use of equipment and laboratory space, particularly B. E. Rodgers and D. Parish for assistance in preparing karyotypes. We also are thankful to the Angelo State Natural History Collections for use of the specimens. We appreciate the assistance of B. R. Skipper and G. R. Xiang in preparation of figures, and S. B. González-Pérez for translating our abstract.

Literature Cited

- ALI, J. R., AND J. C. AITCHISON. 2014. Exploring the combined role of eustasy and oceanic island thermal subsidence in shaping biodiversity on the Galápagos. *Journal of Biogeography* 41:1227-1241.
- ALLEN, J. A. 1892. On a small collection of mammals from the Galápagos Islands, collected by G. Baur. *Bulletin of the American Museum of Natural History* 4:47-50.
- BAKLOUSHINSKAYA, I. Y. 2016. Chromosomal rearrangements, genome reorganization, and speciation. *Biology Bulletin* 43:1-17.
- BRITO J., C. KOCH, A. R. PERCEQUILLO, N. TINOCO, M. WEKSLER, C. M. PINTO, AND U. F. J. PARDIÑAS. 2020. A new genus of oryzomyine rodents (Cricetidae, Sigmodontinae) with three new species from montane cloud forests, western Andean cordillera of Colombia and Ecuador. *PeerJ* 8:e10247 DOI 10.7717/peerj.10247.

- BRITTON-DAVIDIAN, J., J. CATALAN, M. G. RAMALHINHO, G. GANEM, J. C. AUFRAY, R. CAPELA, M. BISCOITO, J. B. SEARLE, AND M. L. MATHIAS.** 2000. Rapid chromosomal evolution in island mice. *Nature* 403:158. <https://doi.org/10.1038/35003116>.
- BROSSET, A.** 1963. Statut actuel des mammifères des îles Galapagos. *Mammalia* 27:323-338.
- CASTAÑEDA-RICO, S. A. JOHNSON, S. A. CLEMENT, R. C. DOWLER, J. E. MALDONADO, AND C. W. EDWARDS.** 2019. Insights into the evolutionary and demographic history of the extant endemic rodents of the Galapagos Islands. *Therya* 10:213-228.
- CLARK, D. A.** 1984. Native land mammals. Pp. 225-231, in *Key environments: Galapagos* (Perry, R., ed.). Pergamon. Oxford, UK.
- DAMAS, J., M. CORBO, AND H. A. LEWIN.** 2021. Vertebrate chromosome evolution. *Annual Review of Animal Biosciences* 9:9:1-27.
- DARWIN, C.** 1859. On the origin of species by means of natural selection, or, the preservation of favoured races in the struggle for life. J. Murray. London, England.
- DI-NIZO, C. B., K. RODRIGUES DE SILVA BANC, Y. SATO-KUWABARA, M. JOSÉ DE J. SILVA.** 2017. Advances in cytogenetics of Brazilian rodents: cytotaxonomy, chromosome evolution and new karyotypic data. *Comparative Cytogenetics* 11:833-392.
- DOWLER, R. C.** 2015. Genus *Nesoryzomys*. Pp. 390-393, in *Mammals of South America. Volume 2, Rodents*, (Patton, J. L., U. F. J. Pardiñas, and G. D'Elia, eds.). The University of Chicago Press. Chicago, U.S.A.
- DOWLER, R. C., AND D. S. CARROLL.** 1996. The endemic rodents of Isla Fernandina: Population status and conservation issues. *Noticias de Galapagos* 57:8-13.
- DOWLER, R. C., D. S. CARROLL, AND C. W. EDWARDS.** 2000. Rediscovery of rodents (Genus *Nesoryzomys*) considered extinct in the Galapagos Islands. *Oryx* 34:109-117.
- ELLERMAN, J. R.** 1941. The families and genera of living rodents. Vol. II. Family Muridae. British Museum (Natural History). London, England.
- GARAGNA S, D. BROCCOLI, C. A. RED, J. B. SEARLE, H. J. COOK, AND E. CAPANNA.** 1995. Robertsonian metacentrics of the house mouse lose telomeric sequences but retain some minor satellite DNA in the pericentromeric area. *Chromosoma* 103:685-692.
- GARAGNA, S. J. PAGE, R. FERNANDEZ-DONOSO, M. ZUCCOTTI, AND J. B. SEARLE.** 2014. The Robertsonian phenomenon in the house mouse: mutation, meiosis and speciation. *Chromosoma* 123. DOI 10.1007/s00412-014-0477-6.
- GARDNER, A. L., AND J. L. PATTON.** 1976. Karyotypic variation in oryzomyine rodents (Cricetinae) with comments on chromosomal evolution in the Neotropical cricetine complex. *Occasional Papers of the Museum of Zoology, Louisiana State University* 49:1-48.
- GEIST, D.** 1984. On the emergence and submergence of the Galapagos Islands. *Noticias de Galapagos* 56:5-9.
- GEIST, D. J., H. SNELL, H. SNELL, C. GODDARD, AND M. D. KURZ.** 2014. A paleogeographic model of the Galapagos Islands and biogeographical and evolutionary implications. Pp. 143-164, in *The Galapagos: a natural laboratory for earth sciences* (Harpp, K. S., E. Mittelstaedt, N. d'Ozouville, and D. W. Graham eds.). <https://doi.org/10.1002/9781118852538.ch8>.
- HAIDUK, M. W., J. W. BICKHAM, AND D. J. SCHMIDLY.** 1979. Karyotypes of six species of *Oryzomys* from Mexico and Central America. *Journal of Mammalogy* 60:610-615.
- HANSON J. D., AND R. D. BRADLEY.** 2008. Molecular diversity within *Melanomys caliginosus* (Rodentia: Oryzomyini): evidence for multiple species. *Occasional Papers, Museum of Texas Tech University* 275:1-11.
- HARRIS, D. B., AND D. W. MACDONALD.** 2007. Population ecology of the endemic rodent *Nesoryzomys swarthi* in the tropical desert of the Galapagos Islands. *Journal of Mammalogy* 88:208-219.
- HELLER, E.** 1904. Mammals of the Galapagos Archipelago, exclusive of the Cetacea. *Proceedings of the California Academy of Sciences* 3:233-251.
- HENG, H. Q. G., AND L. C. TSUI.** 1993. Modes of DAPI banding and simultaneous in situ hybridization. *Chromosoma* 102:325-332.
- HUTTERER, R., AND U. HIRSCH.** 1979. Ein neuer *Nesoryzomys* von der Insel Fernandina, Galapagos. *Bonner Zoologische Beiträge* 30:276-283.
- KEY, G., AND E. MUÑOZ HEREDIA.** 1994. Distribution and current status of rodents in the Galapagos. *Noticias de Galapagos* 53:21-25.
- KING, M.** 1993. Species evolution: the role of chromosome change. Cambridge University Press, Cambridge, England.
- LEE, M. R., AND F. F. B. ELDER.** 1980. Yeast stimulation of bone marrow mitosis for cytogenetic investigations. *Cytogenetics and Cell Genetics* 26:36-40.
- LEITE, R. N., S. O. KOLOKOTRONIS, F. C. ALMEIDA, F. P. WERNECK, D. S. ROGERS, AND M. WEKSLER.** 2014. In the wake of invasion: tracing the historical biogeography of the South American Cricetid radiation (Rodentia, Sigmodontinae). *PLOS ONE* 9:1-12.
- MACHADO, L. F., Y. L. R. LEITE, A. U. CHRISTOFF, AND L. G. GIUGLIANO.** 2014. Phylogeny and biogeography of tetralophodont rodents of the tribe Oryzomyini (Cricetidae: Sigmodontinae). *Zoologica Scripta* 43:119-130.
- MOREIRA, C. N., K. VENTURA, A. R. PERCEQUILLO, AND Y. YONENAGA-YASSUDA.** 2020. A review on the cytogenetics of the tribe Oryzomyini (Rodentia: Cricetidae: Sigmodontinae), with the description of new karyotypes. *Zootaxa* 4876:1-111.
- MUSSER, G. G., AND M. D. CARLETON.** 2005. Superfamily Muroidae. Pp. 894-1531, in *Mammal species of the world: a taxonomic and geographic reference*, 3rd ed. (Wilson, D. L., and D. M. Reeder, eds.). The Johns Hopkins University Press. Baltimore, U.S.A.
- NACHMAN, M. W., AND J. B. SEARLE.** 1995. Why is the house mouse karyotype so variable? *Trends in Ecology and Evolution* 10:397-402.
- ORR, R. T.** 1938. A new rodent of the genus *Nesoryzomys* from the Galapagos Islands. *Proceedings of the California Academy of Sciences*, 4th Series 23:303-306.
- OSGOOD, W. H.** 1929. A new rodent from the Galapagos Islands. *Field Museum of Natural History, Zoological Series* 17:21-24.
- PARADA, A., G D'ELIA, AND R. E. PALMA.** 2015. The influence of ecological and geographical context in the radiation of Neotropical sigmodontine rodents. *BMC Evolutionary Biology* 15:17.2.
- PARADA, A., U. F. J. PARDIÑAS, J. SALAZAR-BRavo, G. D'ELIA, AND R. E. PALMA.** 2013. Dating an impressive Neotropical radiation: Molecular time estimates for the Sigmodontinae (Rodentia) provide insights into its historical biogeography. *Molecular Phylogenetics and Evolution* 66:960-968.

- PARENT, C. E., A. CACCONE, AND K. PETREN. 2008. Colonization and diversification of Galápagos terrestrial fauna: a phylogenetic and biogeographical synthesis. *Philosophical Transactions of the Royal Society B* 363:3347–3361.
- PATTON, J. L., AND M. S. HAFNER. 1983. Biosystematics of the native rodents of the Galápagos Archipelago, Ecuador. Pp. 539–568, in *Patterns of evolution in Galápagos organisms* (Bowman, R. I., M. Berson, and A. E. Leviton, eds.). AAAS Pacific Division. San Francisco, U.S.A.
- PEREIRA, A. L., S. M. MALCHER, C. Y. NAGAMACHI, P. C. M. O'BRIEN, M. A. FERGUSON-SMITH, A. C. MENDES-OLIVEIRA, AND J. C. PIECZARKA. 2016. Extensive chromosomal reorganization in the evolution of new world muroid rodents (Cricetidae, Sigmodontinae): searching for ancestral phylogenetic traits. *Plos One* 11: e0146179. doi:10.1371/journal.pone.0146179.
- PETERSON, R. L. 1966. Recent mammal records from the Galápagos Islands. *Mammalia* 30:441–445.
- PIÁLEK, J., H. C. HAUFFE, J. AND B. SEARLE. 2005. Chromosomal variation in the house mouse. *Biological Journal of the Linnean Society* 84:535–563.
- PINE, R. H., R. M. TIMM, AND M. WEKSLER. 2012. A new recognized clade of trans-Andean Oryzomyini (Rodentia: Cricetidae), with description of a new genus. *Journal of Mammalogy* 93:851–870.
- PRADO, J. R., AND A. R. PERCEQUILLO. 2016. Systematic studies of the genus *Aegialomys* Weksler, Percequillo and Voss, 2006 (Rodentia: Cricetidae: Sigmodontinae): Annotated catalogue of the types of the species-group taxa. *Zootaxa* 4144:477–498. <https://doi.org/10.11646/zootaxa.4144.4.2>.
- PRADO, J. R., AND A. R. PERCEQUILLO. 2018. Systematic studies of the genus *Aegialomys* Weksler *et al.*, 2006 (Rodentia: Cricetidae: Sigmodontinae): geographic variation, species delimitation, and biogeography. *Journal of Mammalian Evolution* 25:71–118. DOI 10.1007/s10914-016-9360-y.
- SALAZAR-BRavo, J., U. F. J. PARDINAS, H. ZEBALLOS, AND P. TETA. 2016. Description of a new tribe of sigmodontine rodents (Cricetidae: Sigmodontinae) with an updated summary of valid tribes and their generic contents. *Occasional Papers, Museum of Texas Tech University* 338:1–23.
- SEARLE, J. B. 1993. Chromosomal hybrid zones in eutherian mammals. Pp. 309–353, in *Hybrid zones and the evolutionary process* (Harrison, R. G., ed.). Oxford University Press. New York, U.S.A.
- SNELL, H. M., H. L. SNELL, G. DAVIS-MERLEN, T. SIMKIN, AND R. E. SILBERGLIED. 1996. Bibliographía de Galápagos 1535–1995 Galápagos Bibliography. Fundación Charles Darwin para las Islas Galápagos, Quito, Ecuador.
- STEADMAN, D. W., AND C. E. RAY. 1982. The relationships of *Megaoryzomys curioi*, an extinct cricetine rodent (Muroidea: Muridae) from the Galapagos Islands, Ecuador. *Smithsonian Contributions to Paleontology* 51:1–23.
- STEADMAN, D. W., T. W. STAFFORD, JR., D. J. DONAHUE, AND A. J. T. JULL. 1991. Chronology of Holocene vertebrate extinction in the Galápagos Islands. *Quaternary Research* 36:126–133.
- STEPHAN, S. J., AND J. J. SCHENK. 2017. Muroid rodent phylogenetics: 900-species tree reveals increasing diversification rates. *Plos One* 12:e0183070.
- SUÁREZ, P., C. Y. NAGAMACHI, C. LANZONE, M. M. MALLERET, P. C. M. O'BRIEN, M. A. FERGUSON-SMITH, AND J. C. PIECZARKA. 2015. Clues on syntenic relationships among some species of Oryzomyini and Akodontini tribes (Rodentia: Sigmodontinae). *Public Library of Science One*, 10:1–12. e0143482.
- SUÁREZ-VILLOTA, E. Y., C. B. DI-NIZO, C. L. NEVES, AND M. J. J. SILVA. 2013. First cytogenetic information for *Drymoreomys albi-maculatus* (Rodentia, Cricetidae), a recently described genus from Brazilian Atlantic Forest. *ZooKeys* 300:65–76.
- THOMAS, O. 1899. Descriptions of new Neotropical mammals. *Annals & Magazine of Natural History, Series 7*, 4:278–288.
- TIMM, R. M., R. H. PINE, AND J. D. HANSON. 2018. A new species of *Tanyuromys* Pine, Timm, and Weksler, 2012 (Cricetidae: Oryzomyini), with comments on relationships within the Oryzomyini. *Journal of Mammalogy* 99:608–623.
- WANG, W., AND H. LAN. 2000. Rapid and parallel chromosomal number reductions in muntjac deer inferred from mitochondrial DNA phylogeny. *Molecular Biology and Evolution* 17:1326–1333.
- WATERHOUSE, G. R. 1839. The zoology of the voyage of H.M.S. Beagle, under the command of Captain Fitzroy, R. N., during the years 1832 to 1836. Part 2. *Mammalia*. Smith, Elder and Co., London, England.
- WEKSLER, M. 2003. Phylogeny of Neotropical oryzomyine rodents (Muridae: Sigmodontinae) based on the nuclear IRBP exon. *Molecular Phylogenetics and Evolution* 29:331–349.
- WEKSLER, M. 2006. Phylogenetic relationships of oryzomyine rodents (Muridae: Sigmodontinae): separate and combined analyses of morphological and molecular data. *Bulletin of the American Museum of Natural History* 196:1–149.
- WEKSLER, M., A. R. PERCEQUILLO, AND R. S. VOSS. 2006. Ten new genera of oryzomyine rodents (Muridae: Sigmodontinae). *American Museum Novitates* 3537:1–29.

Associated editor: Lisa and Robert Bradley

Submitted: January 29, 2021; Reviewed: March 8, 2021

Accepted: April 13, 2021; Published on line: May 28, 2021.

Appendix 1

Specimens examined. Acronym for Angelo State Natural History Collections is ASNHC.

Aegialomys galapagoensis (3). ECUADOR: Galápagos Islands, Santa Fé, -0° 48.21' S, -90° 2.45' W (ASNHC 10613, ASNHC 10614, ASNHC 10615).

Nesoryzomys swarthi (4). ECUADOR: Galápagos Islands, Santiago, La Bomba, -0° 11.21' S, -90° 42.04' W (ASNHC 10597, ASNHC 10598, ASNHC 10599, ASNHC 10601).

Nesoryzomys fernandinae (4). ECUADOR: Galápagos Islands, Fernandina, Cabo Douglas, -0° 18.24' S, -91° 39.14' W (ASNHC 10578, ASNHC 10579, ASNHC 10580, ASNHC 10581).

Nesoryzomys narboroughi (4). ECUADOR: Galápagos Islands, Fernandina, Punta Espinoza, -0° 15.96' S, -91° 26.79' W (ASNHC 10591, ASNHC 10594, ASNHC 10595); Galápagos Islands, Fernandina, Cabo Douglas, -0° 18.24' S, -91° 39.14' W (ASNHC 10587).