

Estimation of natural groundwater recharge in the Aguascalientes semiarid valley, Mexico

Lilia Guerrero-Martínez¹, Martín Hernández-Marín^{2,*}, and Thomas J. Burbey³

¹Posgrado en Ciencias de los Ámbitos Antrópicos, Universidad Autónoma de Aguascalientes, Aguascalientes, Ags. 20131, Mexico.

²Departamento de Geotecnia e Hidráulica, Universidad Autónoma de Aguascalientes, Aguascalientes, Ags. 20131, Mexico.

³Department of Geosciences, Virginia Tech, 4044 Derring Hall, Blacksburg, VA 24061, USA.

*mhernandez@correo.uaa.mx

ABSTRACT

Groundwater recharge (GWR) is analyzed and evaluated within the Aguascalientes Valley by means of a modified linearized Boussinesq equation and the Water Table Fluctuations (WTF) technique. These techniques use the specific yield, water table variations and the sub-surface drainage of groundwater. The methodology is applied to the semiarid Aguascalientes valley, which contains a thick vadose zone. The combination of the analytical solution based on the Boussinesq equation and the WTF technique, allows the method to be applied in areas with deep groundwater levels, such as the Aguascalientes valley, without the need for high temporal resolution data. The data for the application of the method were provided by various government agencies and includes information on 145 wells positioned within the valley during the period 1985-2015. The specific yield and the transmissivity were integrated from the results of two previous investigations. Results indicate that the variation of recharge ranges from 0.86 to 525.69 mm/year in the analyzed period, with the highest recharge rates occurring in the north and center parts of the valley and is likely attributed to high specific yield and vertical hydraulic conductivity due to the presence of coarse permeable soils present in the area. Conversely, the lowest recharge rates were found to occur near the north and south borders of the valley.

Key words: groundwater recharge; Aguascalientes valley; Water Table Fluctuation; Boussinesq equation; groundwater drainage.

RESUMEN

En la presente investigación, la recarga de agua subterránea (GWR) se analiza y evalúa dentro del Valle de Aguascalientes mediante el ajuste a la ecuación linealizada de Boussinesq y la técnica Water Table Fluctuation (WTF), que involucra el rendimiento específico, la variación

del nivel freático y el drenaje subsuperficial de aguas subterráneas. La metodología se aplica al semiárido valle de Aguascalientes que contiene una zona vadosa espesa. La combinación de la solución analítica basada en la ecuación de Boussinesq y la técnica WTF permite que el método se aplique en áreas con niveles profundos de aguas subterráneas, como el valle de Aguascalientes, sin la necesidad de datos de alta resolución temporal. Los datos para la aplicación del método fueron provistos por varias agencias gubernamentales a través de la información de 145 pozos ubicados a lo largo del valle durante el periodo 1985-2015. El rendimiento específico se integró a partir de los resultados de dos trabajos anteriores, así como la transmisividad. Como resultado, la variación de la altura de recarga se obtuvo de 0.86 a 525.69 mm/año en el periodo analizado, las tasas de recarga más altas se presentan al norte y al centro del valle, probablemente atribuidas a un alto rendimiento específico y conductividad hidráulica debido a la presencia de suelos permeables gruesos presentes en el área, por otro lado, las fronteras norte y sur del valle tienen las tasas de recarga más bajas.

Palabras clave: recarga de agua subterránea; valle de Aguascalientes; Water Table Fluctuation; ecuación de Boussinesq; drenaje subterráneo.

INTRODUCTION

Historically, humanity has faced the complication of obtaining water because it is a necessary and indispensable resource in our daily activities. In many locations, surface water for human consumption has diminished over the last several decades leading to a necessary increase in groundwater extraction, particularly in many arid and semi-arid regions. For this reason, many semiarid regions have experienced a considerable reduction of groundwater storage as pumping has greatly exceeded natural recharge. Subsequently, researchers in these critical regions are focusing on studies aimed at understanding recharge processes and determining effective ways in which recharge

can be enhanced naturally (Carrillo-Rivera, 2000, Carrera- Hernández *et al.*, 2016, Manna *et al.*, 2017, Müller *et al.*, 2016; Scanlon, *et al.*, 2010; Sharda, *et al.*, 2006). Groundwater recharge (GWR) refers to the entry of meteoric water across the water table after first entering the soil zone. Recharge crossing the water table potentially enhances aquifer storage. GWR can occur in two ways, by a downward movement due to the gravity forces in the form of runoff and infiltration or by horizontal movement, which generally occurs as lateral contributions of groundwater flow from adjacent aquifers. Factors such as rate and direction of GWR depend on the hydraulic parameters of the geologic layers that make up the soil profile and aquifer systems in question (Balek, 1988). Groundwater recharge is one of the most important parameters in quantifying sustainability of aquifer systems. Several different methods have been employed to evaluate the quantity of recharge entering aquifer systems. These include physical and hydrogeochemical methods and numerical models (Scanlon *et al.* 2006, Simmers 1998, Scanlon *et al.* 2002). Other study factors such as: slope, depth to groundwater, infiltration rate, are used to determine the areas most suitable for groundwater recharge (Ghayoumian *et al.* 2007) or in the application of geographic information systems (SIG) and numerical modeling (Chenini *et al.* 2010). These factors are also used in the study of the temporal and spatial variation of recharge, along with the application of natural or artificial tracers (Hernández-Marín *et al.* 2018, Allison *et al.* 1994, Sophocleous 1991, Wang *et al.* 2008, Qin *et al.* 2011). It is worth mentioning that some techniques do not attempt to quantify an actual GWR rate, but rather estimate potential GWR, a term that refers to the water that infiltrates but does not instantaneously contribute to the aquifer storage, but rather where subsurface drainage actively participates so that the net storage change is not easily quantifiable. For example, in areas with a thick unsaturated zone, the direct influence of the rainfall on the water table and then on GWR varies both temporally and spatially depending on the hydrogeological conditions of the subsoil, precipitation pattern (*e.g.* intensity and duration) and evapotranspiration, as well as the geomorphological characteristics of the surface (Rushton, 1988, Scanlon *et al.*, 2002). Taking these aspects into consideration, it becomes important to quantify the drainage in a rigorous manner to minimize the error in the quantification of an actual recharge rate that affects overall aquifer storage (Cuthbert, 2010).

In recent years, analytical techniques have been proposed for the evaluation of GWR. Many of these approaches assume that temporary changes in the groundwater level are controlled by two main factors: the balance of recharge and net drainage of groundwater (Crosbie, *et al.*, 2005; Cuthbert, 2010; Jie, *et al.*, 2011). These two factors can be applied to GWR when the aquifer systems are separated from the surface by a thick vadose zone. In this way, the potential recharge of aquifers under known climatic conditions depends mainly on the infiltration from surface water bodies and the lateral contributions.

The aim of this research is to evaluate the potential GWR by applying an analytical adjustment of the Water Table Fluctuation (WTF) technique, in combination with the Boussinesq equation for the quantification of drainage. This methodology is applied to the aquifer of the Aguascalientes Valley, where the territory is classified as semi-arid (POEA, 2013) and 94% of water use originates from underground sources (CONAGUA and SEMARNAT, 2016). The WTF method is based on two intrinsic factors of the aquifer: (1) variations of the static water levels and (2) specific yield. The Boussinesq equation is related to hydraulic conductivity and aquifer thickness (or transmissivity). A further goal is to create a recharge map containing isovalues over the study area and the variations in the recharge isovalues will be discussed in the context of the overall hydrogeology of the region. This analysis will raise awareness about the sustainable management of the local aquifer, as well as to help in decision-making of actions

such as the establishment of waste disposal areas, or the delimiting of areas vulnerable to groundwater pollution and to better understand their possible occurrence.

CHARACTERISTICS OF THE STUDY AREA

The study area corresponds to the valley of Aguascalientes in the state with the same name, occupying a strip having a North-South orientation and extending a length of approximately 80 km and a width of 25 km as shown in Figure 1. This zone is in a tectonic graben as described by Aranda-Gómez (1989).

The San Pedro River represents the main hydrographic feature of the Valley and flows from north to south almost through the center of the valley. The main land uses in the study region include agriculture with intensive irrigation and livestock (63%), natural pasture (16%), shrubs (15%), oak forest (3.9%), mesquites (0.2%), with the remaining 1.9% corresponding to urban areas, where more than 85% of the population of the state resides (CONABIO *et al.*, 2008, INEGI, 2018). It is important to mention that of the 50 thousand hectares dedicated to the agricultural activities within the valley, almost the entire area is irrigated with groundwater, although there is an important potential for the reuse of groundwater from irrigation, (CONAGUA, 2005; Pacheco-Martínez *et al.*, 2013). In terms of climate, 68% of the territory of Aguascalientes is semi-arid with an average maximum temperature of 25 °C, and an annual average rainfall of 526 mm and annual average potential evaporation of 2,200 mm. The rainy season occurs mainly during summer, with only occasional rainfall during the other seasons of the year (INEGI, 1993).

Geomorphologically, the study area is relatively flat with small hills distributed within the area and increasing slopes toward the mountains. The valley is located between the Tepezalá mountains of to the east and the Sierra Fria mountains in the west. The average altitude of the Aguascalientes Valley is 1,900 m. The valley includes two important physiographic provinces. The Mesa Central is in the east, while the Sierra Madre Occidental is to the west and consists of valleys and elongated mountain ranges oriented mainly NW-SE and NE-SW (CONAGUA, 2018). According to UNAM-UAQ (unpublished data, 2002) a predominance of alluvial and fluvial deposits occurs within the valley with the topmost sedimentary sequence composed primarily of detrital rocks derived from unconsolidated alluvial materials and classified as clays, silts, sands and gravels according to their grain size. The general stratigraphic sequence was determined through vertical electric soundings (SEVs) that were performed throughout the study area (Zermeño-Villalobos, 2016). Beneath the detrital rocks it was determined that the unconsolidated deposits exhibit a variable thickness from a few meters in the periphery of the valley, to up to 380 meters in the center (Hernández-Marín *et al.* 2018). Approximately 200–300 meters of compacted lithified sediments (conglomerates and sandstones) and fractured igneous rocks (rhyolites and ignimbrites) occur below the fluvio-alluvial refill that occupies the center of the valley. The compacted conglomerates outcrop mostly in the west, while igneous rocks can be observed in the east, conforming to the orientation of the mountain ranges. An analysis of the lithology of the unconsolidated central sediments was evaluated based on the SEV results and the lithological records of deep well logs, which suggests a stratigraphic configuration of coarse sediments such as gravel and sand, with smaller portions of clay and silt. Groundwater is determined to flow from north to south according to water level observations from measured wells. The chief aquifer of the Aguascalientes valley is considered unconfined (DOF, 2012), but with a thick vadose zone. As expressed by some local drilling engineers (Fuentes-López, expert in geophysics and geology,

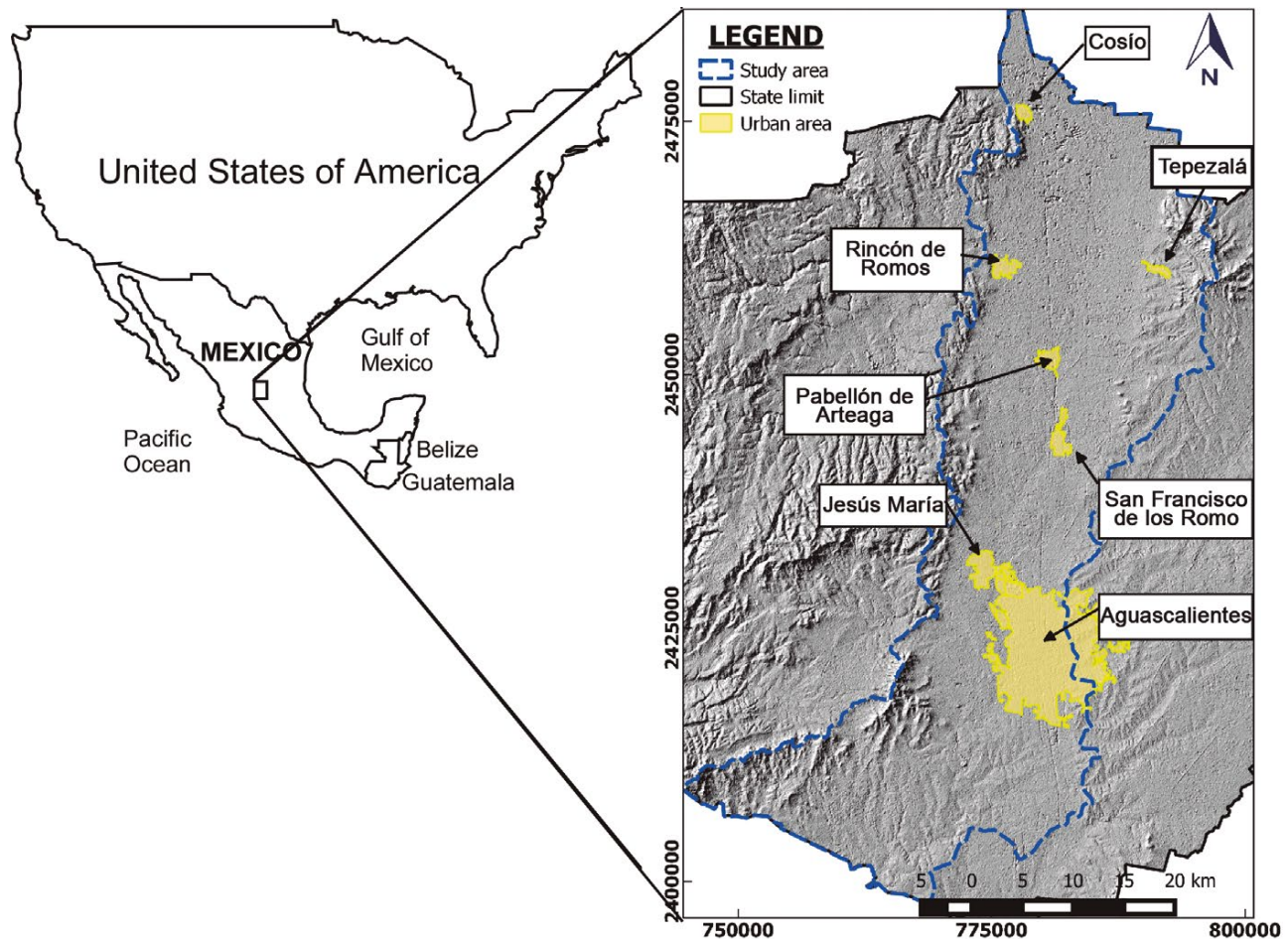


Figure 1. Location of the study area. The main urban centers of the zone are highlighted in yellow.

personal communication, 2018), currently no uprising of water levels in wells occurs during drilling, despite the presence of a thick vadose zone. Therefore, the local aquifer is considered as free or unconfined because this type of aquifers is defined by its response to groundwater pressure, regardless of the thickness of the vadose zone.

METHODOLOGY

Conceptualization and analysis of the WTF technique and the quantification of drainage

According to Vélez-Otálvaro (2004) the methods to determine the GWR can be classified into five categories: direct measurements, water balance, chemical tracers, Darcy-Law approximations, and empirical methods. This author also states that some of the most reliable methods for estimating the recharge of semi-arid zones such as the Aguascalientes valley are chemical tracers, direct measurements and water balance. In this research the water balance method is used to quantify recharge and specifically invokes the method of variations of groundwater, defined as Water Table Fluctuation or WTF. This method has been used in several research investigations. Healy and Cook (2002), for example, presented an excellent review of theory and its applications. Cuthbert (2010) performed an analysis that includes underground drainage to minimize the error in the recharge estimate by developing an expression for the drainage component, which is a

function of the hydraulic gradient and transmissivity and therefore hydraulic conductivity and saturated thickness. In general, the WTF technique is applicable to several hydrologic scenarios, including ones in which the water table is deep and / or where groundwater levels can vary smoothly, if the hydrogeological properties of the aquifer are relatively well known.

The expression used in the method assumes that temporal water-level changes of an aquifer are controlled by the recharge balance R (mm/year) and the net drainage of groundwater D (mm/year) at a given observation point for a certain period of time, t . The recharge can be calculated as:

$$R = S_y \frac{\partial h}{\partial t} + D \quad (1)$$

Where S_y represents the specific yield, $\partial h / \partial t$ is the temporal variation of the water table in the study area, and D is the drainage.

The WTF method frequently ignores factors such as trapped air or barometric fluctuations that may affect the water level (Healy and Cook, 2002). In addition, the water that infiltrates and moves through the unsaturated zone can vary significantly in time and quantity, depending on certain conditions such as evapotranspiration, porosity, hydraulic conductivity, specific yield, and depth. The main limitations of the WTF technique are the difficulties of defining and estimating the specific yield as well as the quantification of drainage in areas with thick unsaturated zones, since in shallow water tables, the error in drainage may be minimal because the water level may

increase significantly during a rainfall period. Therefore, in areas with a considerably deep water table, it is important to rigorously estimate the drainage to minimize the error in the quantification of the recharge, as suggested by Cuthbert, (2010). This author also establishes the equation for the drainage calculation considering the case of an ideal homogeneous horizontal aquifer limited at one end with $x = 0$, conceptually representing a boundary without flow (e.g. the mountains along the basin perimeter), and at the other end with $x = L$ where a river exists and exhibits a constant head boundary condition, as shown in Figure 2. This idealized scenario is a typical conceptual representation of many aquifer systems.

The calculation of the drainage is based on the one-dimensional Boussinesq equation of the groundwater flow for an aquifer that receives homogeneous recharge and that follows a sinusoidal pattern. The applicable equation is the following:

$$D = \frac{2\bar{h}T}{L^2 - x^2} \quad (2)$$

Where T is the transmissivity (m^2/d) and \bar{h} is the hydraulic gradient. Recalling that the transmissivity is the product of the aquifer thickness b (m) and the average value of the hydraulic conductivity k (m/d) (Freeze and Cherry, 1979).

By combining equations 1 and 2, the recharge and drainage can be calculated for a period of time as:

$$R = S_y \frac{\partial h}{\partial t} + \frac{2\bar{h}T}{L^2 - x^2} \quad (3)$$

Specific Yield (S_y) estimation

The specific yield S_y is a fundamental parameter in the WTF method and can be defined as the volume of water released per unit area of the unconfined aquifer when the water table decreases by one unit of height. However, this definition is only valid under conditions of equilibrium and small-scale experiments. Currently, there are several methods to measure S_y , such as laboratory, fieldwork, empirical, etc. However, they all have a degree of associated uncertainty. Commonly, S_y is assumed to be a constant value (Healy and Cook, 2002, Tritscher *et al.*, 2000), although this parameter varies depending on the different intrinsic conditions of the aquifer such as the local water flow, the depth of the phreatic level and the heterogeneity of the soil (Fetter, 2001). Thus, its variability depends on the factors that are considered for its calculation and the means in which they are obtained (Childs, 1960). The specific yield is inherently treated as a storage term independent

of time in the WTF method, which in theory explains the instantaneous release of stored water.

APPLICATION OF THE METHOD

Estimation and distribution of specific yield S_y

The distribution of the specific yield throughout the study zone was mapped based on the results of two previous investigations, (UNAM-UAQ unpublished data, 2002; CONAGUA 2015).

In the first report, a numerical groundwater model was developed using the Visual-Modflow package program, in which a map of the variation of S_y was developed through model calibration, which yielded a S_y isocurve map for year 1996. The researchers used a total of 160 wells during their modeling analysis. In the second report, the results of 13 pumping tests ranging from hours to days were performed in the north and center of the Aguascalientes Valley. Time-drawdown curves were developed from the pumping tests and compared with the theoretical curves developed by Boulton (1963), Neuman and Witherspoon (1972) and Moench (1996) for the calculation of the specific yield at each pumping test location. Linear interpolation was then used to create a map of the variations of S_y in the area where the pumping tests were performed. The S_y maps from both investigations were combined algebraically using the multilevel B-spline interpolation method to create a new map of the variation of the specific yield in the study area. The new map is shown in Figure 3.

Evaluation of groundwater levels

Groundwater levels were obtained by analyzing data provided by government agencies such as PROACTIVA medio Ambiente CAASA, which is the company commissioned for the distribution of water in the municipality of Aguascalientes, and the CONAGUA. Both agencies provided the static water levels of wells measured throughout the Valley during the period 1968-2015. This investigation focuses only on the period between 1985 and 2015. Figure 4 shows a map with the location of the wells with the provided data, the measurements in the wells are mostly annual and sometimes monthly.

Unfortunately, as in many cases, not all the wells have complete data that could be used for direct application of the method, thus, a classification of the wells was performed in order to discard those without sufficient information. To determine which and how many wells would be included in the study, we first considered those active during 2015, recalling that this is the most recent year of the analysis period. The availability of regular measurement records was also considered. In some cases, the missing data was completed by applying one of four statistical methods according to the amount of missing data and the location of the well in the valley. The methods applied were linear regression, neighborhood averages, average ratios and the correlation method. As a final analysis, 145 wells were used for the application of the WTF technique.

Estimation of underground drainage

To estimate the underground drainage, the methodology described by Cuthbert (2010) was considered. As mentioned earlier, this author proposed a conceptual model with the section of a free aquifer of length $x = L$. In the study area, this model is represented by a section of the basin of the Aguascalientes valley, where the San Pedro River would form a constant hydraulic head boundary, while the model periphery represents a no-flow condition at $x = 0$ as shown in Figure 5 (see also Figure 2 and Eq. 3).

The values of transmissivity were taken from reports of various agencies of both public and private sectors (Table 1). Similarly, as

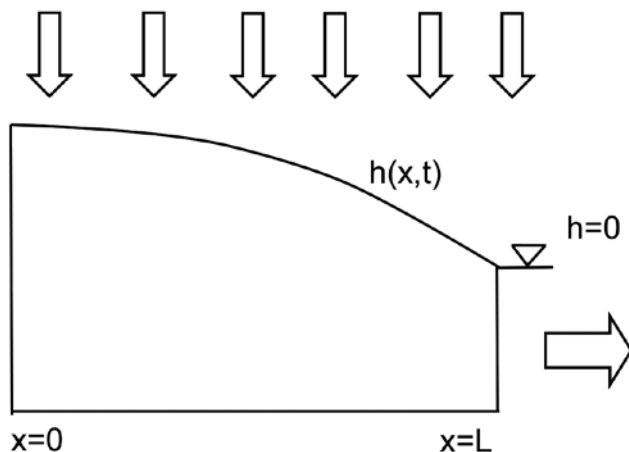


Figure 2. Idealized conceptual section of an aquifer that receives recharge with sinusoidal variation of the water level $h(x, t)$ (Cuthbert, 2010).

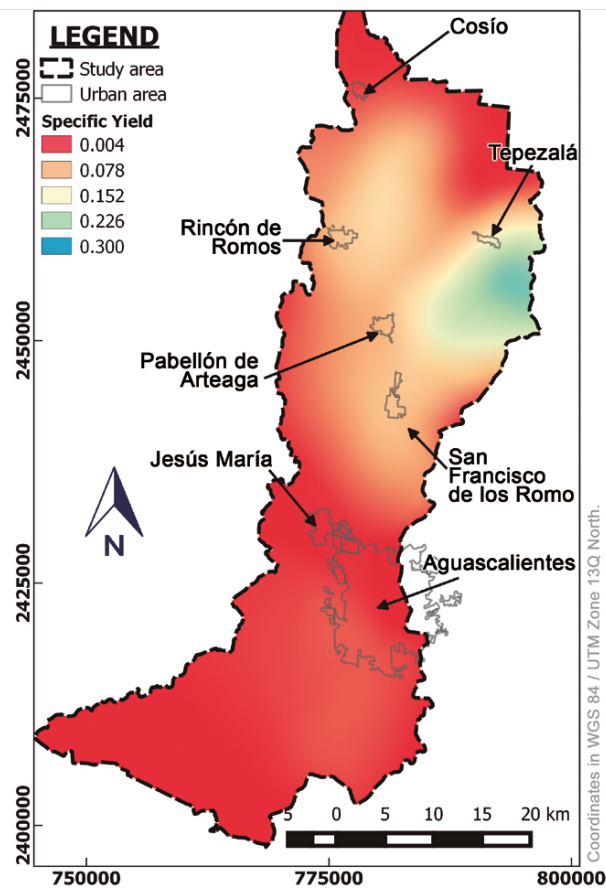


Figure 3. Distribution of the specific yield in the study area. This map combines the results from UNAM-UAQ (unpublished data, 2002) and CONAGUA (2015) using the interpolation Multilevel B-Splines method.

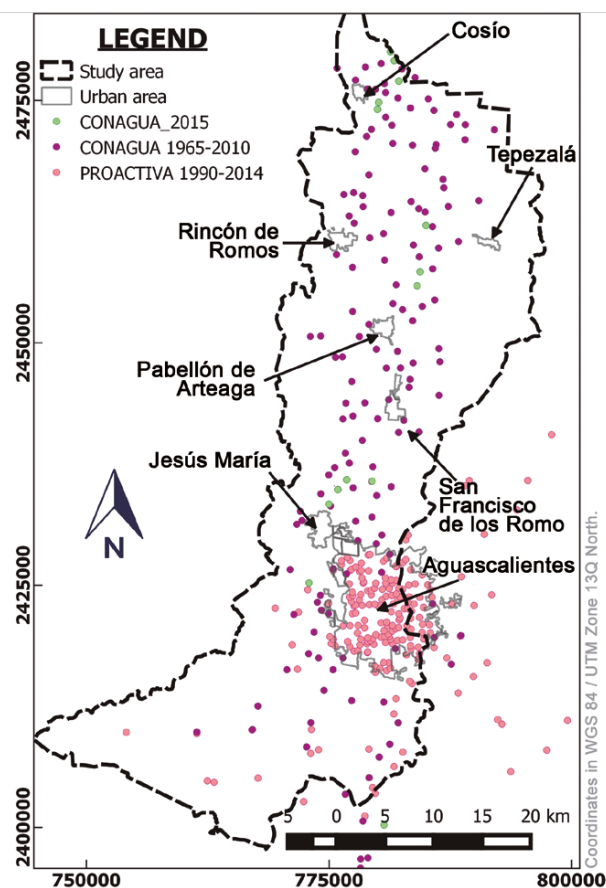


Figure 4. Location of wells used in this study and provided by CONAGUA and PROACTIVA Medio Ambiente CAASA.

Table 1. Transmissivity values taken from various agencies of the public and private sectors (CONAGUA, 2015). Coordinates in WGS 84 / UTM Zone 13Q North.

Well ID	UTM Coordinate		T (m ² /day)	Well ID	UTM Coordinate		T (m ² /day)	Well ID	UTM Coordinate		T (m ² /day)	Well ID	UTM Coordinate		T (m ² /day)
	X	Y			X	Y			X	Y			X	Y	
68-22	775938	2416730	846.72	42-79	778242	2441802	648	27	788605	2425861	13.0464	III	785023	2418770	409.536
51-50	782121	2434346	388.8	42-33	780569	2444860	864	34	783284	2422929	655.776	X	790796	2452293	607.392
33-43	780214	2452735	1123.2	33-52	784818	2455822	138.24	41	782917	2422196	402.624	VIII	794399	2449891	9.504
23-4	777303	2461804	518.4	43-4	798648	2445439	250.56	44	782137	2422104	538.272	VII	799734	2448679	72.4896
24-57	786328	2461753	544.32	23-3	775953	2462251	181.44	53	783513	2421050	384.48	VI	772512	2461130	55.0368
3-10	777821	2484558	362.88	24-6	781780	2470351	475.2	56	782871	2419905	686.016	IV	778544	2465290	1161.993
78-6	780934	2406973	95.04	15-2	780668	2480729	250.56	58	784385	2420180	113.184	V	783632	2465257	209.952
68-16	774098	2417086	146.88	41	787028	2475627	19.872	64	781765	2416606	26.0928	88	779641	2476307	11.7504
79-1	799641	2412077	1468.8	1	779000	2485523	551.23	66	785165	2419492	13.1328	7A	786555	2474032	55.1232
60-26	779474	2425622	129.6	19	778799	2482188	436.32	69	786770	2418943	12.8736	90	779302	2468233	13.824
50-64	775976	2433108	26.784	3	781994	2430787	51.235	98	789155	2415186	2.68704	68	777563	2447623	58.4928
51-87	790663	2435136	23.328	9	785164	2429507	8.0697	I	783485	2418911	1099.958	172	772481	2431870	7.56
PAB-4	790683	2438531	49.248	21	782129	2424253	328.32	II	784144	2417735	244.512	178	780264	2399489	5.14944

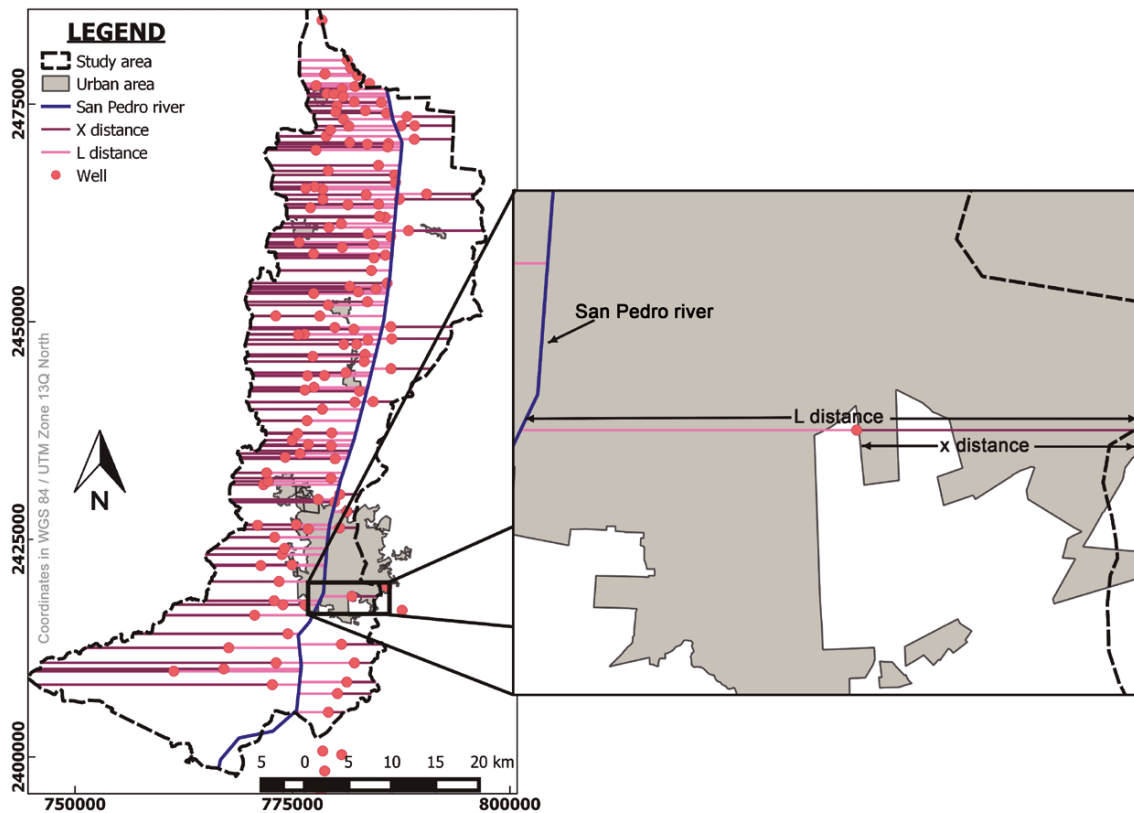


Figure 5. All sections (represented as horizontal lines) on the Aguascalientes valley were used to estimate the drainage, with $x = 0$ representing the no-flow boundary, and $x = L$ representing a constant-head boundary, which coincides with the location of the San Pedro River through the center of the valley.

was done for creating a map of S_y , the B-Spline Multilevel technique was used as an interpolation method to obtain the distribution of the transmissivity distribution in the study area as shown in Figure 6.

RESULTS

The GWR was calculated for each of the 145 wells using Eq. 3 along with the isocurves from Figures 3 and 6. The calculated GWR and the parameters used in the computation are compiled in Table 2 (which only shows the results of 30 wells for brevity). This table also includes some of the annual data over the span of the 30-year analysis.

GWR shown in Table 2 was converted into a digital map for further analysis. The results reveal the regions with the highest and lowest estimated GWR within the study area. The greatest recharge is located mainly in the northern and central parts of the valley, where a maximum recharge of 525.67 mm/year is estimated. Conversely, at the north and south boundaries of the study site, as well as in the metropolitan area of the city of Aguascalientes, the lowest values of GWR are estimated to be on the order of 0.086 mm/year. Figure 7 shows the calculated distribution of the recharge for the study area.

DISCUSSION

The results from Figure 7 clearly show that the center and north portions of the valley have the largest rates of GWR. These areas of high recharge can be attributed in part to the dominant type of soil, which corresponds to coarse-grained alluvial deposits with relatively

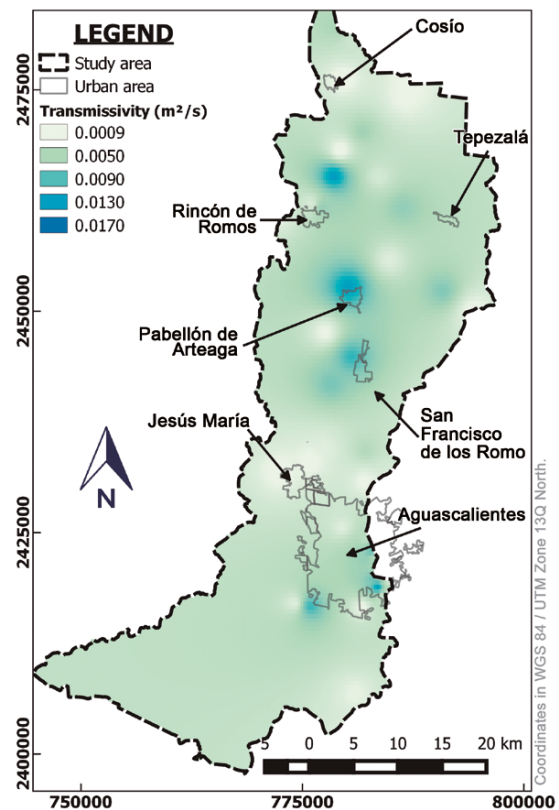


Figure 6. Distribution of transmissivity. Map resulting from the Multilevel B-Splines interpolation and the data of Table 1.

Table 2. Representative sample of results of the application of the WTF method (Δh^*) and the analytical solution of the Boussinesq equation (D^*) for the estimation of GWR (R^*). The differences in the value of the column of S_y and T are determined by the location of the well on the maps of specific yield and transmissivity, respectively. h^* corresponds to the hydraulic gradient of the wells analyzed to the San Pedro River, x^* is the distance from the boundary of the basin to the location of the well, L^* is the total distance from the boundary of the basin to the San Pedro River, passing through the analyzed well; T indicates the transmissivity, D^* is the drainage calculated with equation 2; S_y indicates the specific yield, Δh^* is the variation hydraulic head between the first and last years of analysis (from 1985 to 2015); and R^* indicates the annual recharge obtained through the proposed methodology. Coordinates in WGS 84 / UTM Zone 13Q North.

Well ID	UTM Coordinates		\bar{h}^* (m)	x^* (m)	L^* (m)	T^* (m ² /d)	D^* (mm/d)	S_y^*	Δh^* (mm)	R^* (mm/year)
	X	Y								
1	778394.6	2484628	0.020	4108.600	9267.440	423.360	0.087	0.004	36926.781	5.134
4	781311.2	2480026	0.015	4108.600	9267.440	259.200	0.042	0.004	53880.000	7.406
6	780709.7	2476737	0.010	4108.600	9267.440	86.400	0.010	0.004	57869.300	7.918
7	783861.7	2477367	0.004	4108.600	9267.440	181.440	0.008	0.004	85882.023	11.745
10	778877.9	2471298	0.004	5647.180	14086.210	293.760	0.005	0.080	57729.936	153.951
11	786033.2	2470462	0.004	12846.190	14411.690	259.200	0.018	0.004	51989.000	7.124
12	781580.1	2470578	0.004	8457.590	13485.980	432.000	0.012	0.004	60167.400	8.235
13	788169.5	2473568	0.021	5373.620	7070.390	98.323	0.070	0.004	64326.668	8.862
14	785940.1	2470072	0.037	12696.830	14518.230	267.494	0.145	0.004	6655.400	1.054
15	778958.6	2476200	0.011	2176.640	9161.830	42.336	0.004	0.004	46484.005	6.357
17	778468.7	2465203	0.001	5791.200	14414.310	1140.480	0.007	0.100	49921.400	166.411
18	781394.1	2463445	0.002	7230.370	12755.150	437.184	0.006	0.200	55283.600	368.563
19	784890.3	2467963	0.009	12411.420	14881.270	3162.240	0.321	0.004	52230.800	7.460
20	779191.5	2460838	0.002	5933.510	13432.770	451.872	0.006	0.100	52855.500	176.191
21	785664.4	2461996	0.007	11204.060	12330.950	535.680	0.096	0.082	56919.500	155.676
22	784988.9	2462107	0.006	10587.270	12199.260	453.600	0.056	0.200	48847.704	325.707
23	780607.9	2461276	0.004	6786.290	12907.140	449.280	0.010	0.082	65161.700	178.119
25	777425.6	2457806	0.000	4378.570	13380.330	419.040	0.000	0.082	44765.546	122.359
27	777473.5	2442462	0.006	7211.950	13387.010	599.616	0.019	0.082	44147.392	120.689
28	780722.9	2458545	0.004	8737.350	14505.950	428.544	0.008	0.100	65455.900	218.195
30	783625.3	2452290	0.001	13941.470	16109.780	518.400	0.004	0.082	58538.500	160.009

high values of specific yield and hydraulic conductivity (0.010 to 0.30 and 0.2 to 20 m/d respectively). Furthermore, as a consequence of the predominance of this type of soil, the estimated drainage increases in the vicinity of the San Pedro River, which is likely enhanced by extensive agricultural practices in this area due to the high return volume of irrigation water to the subsoil. Conversely, the regions with the lowest estimated rates of GWR, located at the north and south boundaries of the valley, as well as in the metropolitan area of the city of Aguascalientes, is attributed to the large discharge of groundwater that lowers water levels and consequently thickens the vadose zone and results in reduced levels of estimated recharge. Also, possibly contributing to the reduced estimates of recharge is, the presence of sandstones and conglomerates exhibiting a low specific yield and small hydraulic head variations. Interestingly, these low recharge areas are where the highest calculated contributions by drainage occur. Clearly, the high drainage does not appear to make a significant difference in the general estimation of recharge.

When comparing the recharge estimated in this study with that estimated by UNAM- UAQ (unpublished data, 2002) using natural tracers (O-18 and Deuterium) the zones with the largest potential for recharge coincide with the results estimated in this investigation. Furthermore, they also determine that the zone with the lowest potential for recharge is within the city of Aguascalientes, which also coincides with the results presented here.

On the other hand, an estimation of natural recharge reported by CONAGUA (2018) takes into account a water balance with four factors: underground horizontal flow input based on the static level and Darcy's law ($83.1 \times 10^6 \text{ m}^3$), horizontal flow outputs with an estimated volume of

$2.4 \times 10^6 \text{ m}^3$, pumping of $427.4 \times 10^6 \text{ m}^3$ and storage change, taking into account the configuration of the evolution of the static level registered during the period 2000-2014, with an annual average of $-180.2 \times 10^6 \text{ m}^3$, the natural recharge estimated by CONAGUA is $249.6 \times 10^6 \text{ m}^3$, but if only the vertical recharge is taken into account CONAGUA recharge is $166.5 \times 10^6 \text{ m}^3$, which is 0.9% less than the total recharge estimated in this investigation ($168 \times 10^6 \text{ m}^3$). It should be noted that in the technique described here, does not consider the horizontal recharge. Despite the different methods used in the calculation of the vertical recharge, the results are almost equal, these comparisons indicate that the technique proposed in this work is applicable to the Aguascalientes valley, although it may be necessary to apply new methodologies or to include new factors in the future to reduce uncertainty in estimated recharge. Some of the factors to consider may be water bodies, effects of anisotropy, and climate data for long-term periods.

CONCLUSIONS

This investigation presents a methodology for the estimation of groundwater recharge (GWR) by employing an analytical solution of Boussinesq for unconfined flow into the Water Table Fluctuation (WTF) method. The study area encompasses the semi-arid valley of Aguascalientes, in central Mexico. This rectangular north-south trending valley represents a tectonic graben that is about 80 km in length and 25 km in width. The estimated GWR is variable throughout the valley with an estimated maximum annual value of 526.26 mm and a minimum annual rate of 0.86 mm. The areas with the greatest

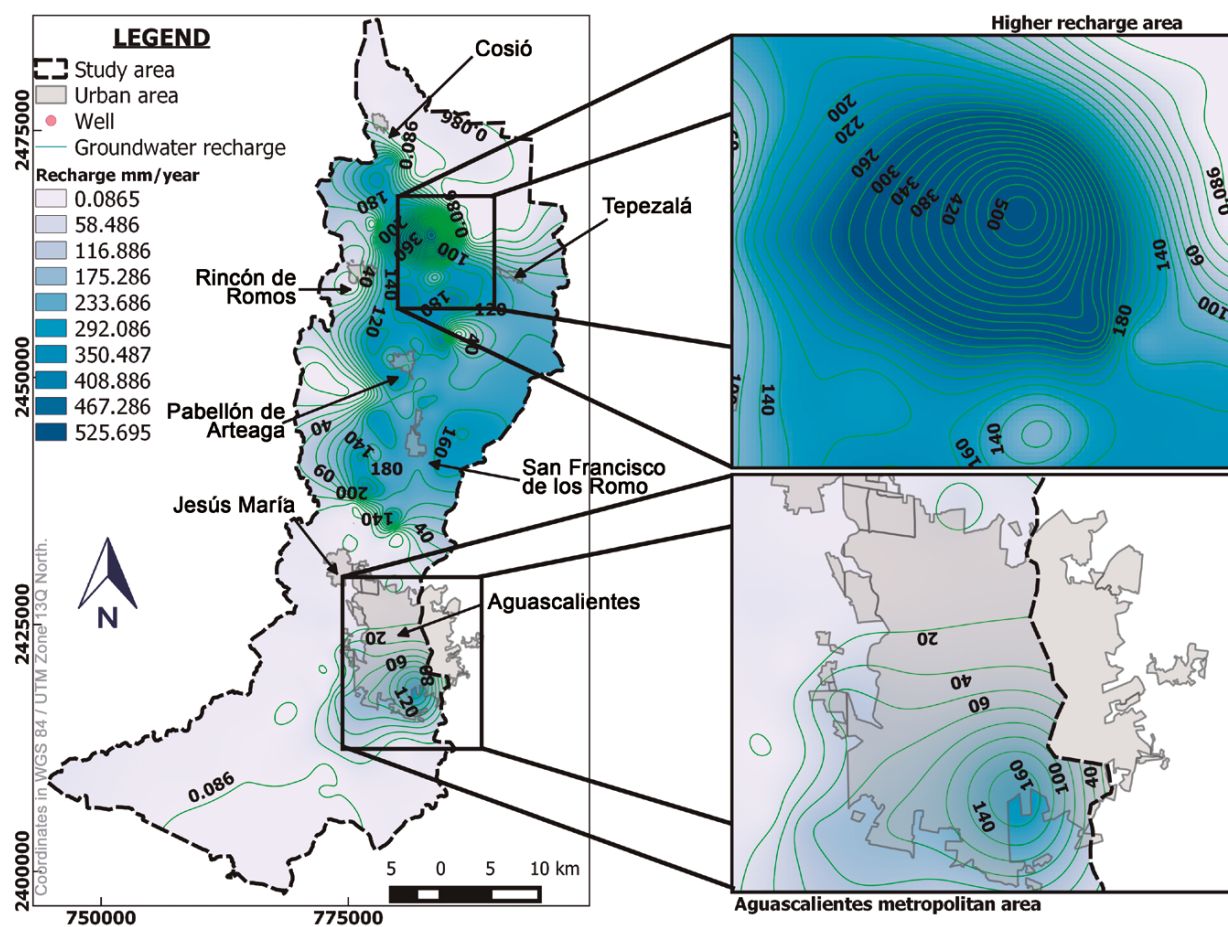


Figure 7. General map of GWR rate.

estimated recharge are located at the northern and central parts of the valley and is attributed to agricultural practices and coarser-grained soils in these areas. Conversely, the lowest estimated recharge occurs along the north and south boundaries of the study area and within the city of Aguascalientes. These low values are attributed to heavy pumping, which lowers the water level and increases the thickness of the vadose zone as well as to lithologies having a low specific yield. The results present similarity in volume and space, with previous studies.

REFERENCES

- Allison, G.B., Gee, G.W., Tyler, S.W., 1994, Vadose-Zone Techniques for Estimating Groundwater Recharge in Arid and Semiarid Regions: Soil Science Society of America Journal, 58, 6-14.
- Aranda-Gómez, J.J., 1989, Geología preliminar del Graben de Aguascalientes: Universidad Nacional Autónoma de México, Instituto de Geología, Revista, 8(1), 22-32.
- Balek, J., 1988, Groundwater recharge concepts, in Simmers I. (ed.), Estimation of Natural Groundwater Recharge. NATO ASI Series (Series C: Mathematical and Physical Sciences), vol 222. Springer, Dordrecht. 3-9.
- Boulton, N. S., 1963, Analysis of data from non-equilibrium pumping tests allowing for delayed yield from storage, Proceedings of the Institution of Civil Engineers, 26(3), 469-482.
- Carrera-Hernández, J., Carreón-Freyre, D., Cerca-Martínez, M., Levresse, G., 2016, Groundwater flow in a transboundary fault-dominated aquifer and the importance of regional modeling: the case of the city of Querétaro, Mexico, Hydrogeology Journal, 24(2), 373-393.
- Carrillo-Rivera, J., 2000, Application of the groundwater-balance equation to indicate interbasin and vertical flow in two semi-arid drainage basins, Mexico: Hydrogeology Journal, 8(5), 503-520.
- Chenini, I., Mammou A.B. El May M., 2010, Groundwater Recharge Zone Mapping Using GIS-Based Multi-criteria Analysis: A Case Study in Central Tunisia (Maknassy Basin): Water Resources Management, 24, 921-939.
- Childs, E.C., 1960, The nonsteady state of the water table in drained land: Journal of Geophysical Research, 65(2), 780-782.
- CONABIO (Comisión Nacional para el Conocimiento y Uso de la Biodiversidad), IMAE (Instituto del Medio Ambiente del Estado de Aguascalientes), UAA (Universidad Autónoma de Aguascalientes), 2008, La Biodiversidad en Aguascalientes: Estudio de Estado. México, D.F. ISBN: 978-970-9000-45-0., 43-53. <<https://www.biodiversidad.gob.mx/region/EEB/pdf/ESTUDIO%20DE%20BIODIVERSIDAD%20EN%20AGUASCALIENTES.pdf>>, query date: january 2018.
- CONAGUA (Comisión Nacional del Agua), 2005, Evaluación externa del programa de suministro e instalación de medidores volumétricos y totalizadores en pozos de uso agrícola y pecuario en los acuíferos del Estado de Aguascalientes, Comisión para el desarrollo agropecuario del estado de Aguascalientes (CODAGEA) (Ed.). Aguascalientes, México, 3-8. <<http://www.aguascalientes.gob.mx/sedrae/see/info-estatales/2004/EvEstatMacromedidores2004.pdf>>, query date: may 2018.
- CONAGUA (Comisión Nacional del Agua), 2015, Actualización de la disponibilidad media anual de agua en el acuífero Valle de Aguascalientes (0101), Estado de Aguascalientes. México D.F., Posted in Diario de la federación in April, 20, 2015, 13-15.
- CONAGUA (Comisión Nacional del Agua), 2018, Actualización de la disponibilidad media anual de agua en el acuífero Valle de Aguascalientes (0101), Estado de Aguascalientes. México D.F., Posted in Diario de la federación in january, 04, 2018, 8-23, 25-31. <<https://www.gob.mx/cms/>>

- uploads/attachment/file/329103/DR_0101.pdf > query date: april 2018.
- CONAGUA (Comisión Nacional del Agua), SEMARNAT (Secretaría de Medio Ambiente y Recursos Naturales), 2016. Estadísticas del Agua en México. México D.F., Coordinación General de Comunicación y Cultura del Agua de la Comisión Nacional del Agua, 13-15. <http://201.116.60.25/publicaciones/eam_2016.pdf>, query date: april 2018.
- Crosbie, R.S., Binning, P.J., Kalma, J.D., 2005, A time series approach to inferring groundwater recharge using the water table fluctuation method: *Water Resources Research*, 41(1), 1-9.
- Cuthbert, M.O., 2010, An improved time series approach for estimating groundwater recharge from groundwater level fluctuations: *Water Resources Research*, 46(9), 1-11.
- DOF (Diario Oficial de la Federación), 2012, Acuerdo por el que se dan a conocer los estudios técnicos de los acuíferos Valle de Aguascalientes, clave 0101 en el Estado de Aguascalientes; Encarnación, clave 1422 en el Estado de Jalisco y Ojocaliente, clave 3212 en el Estado de Zacatecas: Aguascalientes, Ags., México, Secretaría de Gobernación, June 6 2012, available at <http://www.dof.gob.mx/nota_detalle.php?codigo=5249906&fecha=06/06/2012>, query date: april 2018.
- Fetter, C.W., 2001, *Applied Hydrogeology*, 4th ed: Upper Saddle River, NJ, Prentice Hall, 598 pp.
- Freeze, R.A., Cherry, J.A., 1979, *Groundwater*: Englewood Cliffs, Prentice Hall, 604 pp.
- Ghayoumian, J., Mohseni Saravi, M., Feiznia, S., Nouri, B., Malekian, A., 2007, Application of GIS techniques to determine areas most suitable for artificial groundwater recharge in a coastal aquifer in southern Iran: *Journal of Asian Earth Sciences*, 30, 364-374.
- Healy, R.W., Cook, P.G., 2002, Using groundwater levels to estimate recharge: *Hydrogeology Journal*, 10(1), 91-109.
- Hernández-Marín, M., Guerrero-Martínez, L., Zermeño-Villalobos, A., Rodríguez-González, L., Burbey, T.J., Pacheco-Martínez, J., Martínez-Martínez S.I., González-Cervantes, N., 2018, Spatial and temporal variation of natural recharge in the semi-arid valley of Aguascalientes, Mexico: *Hydrogeology Journal*, 1-16. <https://doi.org/10.1007/s10040-018-1819-x>.
- INEGI (Instituto Nacional de Estadística y Geografía), 1993, *Estudio Hidrológico del Estado de Aguascalientes*: Aguascalientes, México., 119 pp.
- INEGI (Instituto Nacional de Estadística y Geografía), 2018, *Información por entidad, Aguascalientes*: available at <<http://cuentame.inegi.org.mx/monografias/informacion/ags/territorio/default.aspx?tema=me&e=01>>, query date: january 2018.
- Jie, Z., van Heyden, J., Bendel, D., Barthel, R., 2011, Combination of soil-water balance models and water-table fluctuation methods for evaluation and improvement of groundwater recharge calculations: *Hydrogeology Journal*, 19(8), 1487-1502.
- Manna, F., Walton, K.M., Cherry, J.A., Parker, B.L., 2017, Mechanisms of recharge in a fractured porous rock aquifer in a semi-arid region: *Journal of Hydrology*, 555, 869-880.
- Moench, A. F., 1996, Flow to a well in a water-table aquifer: an improved Laplace transform solution. *Groundwater*, 34 (4), 593-596.
- Müller, T., Osenbrück, K., Strauch, G., Pavetich, S., Al-Mashaikhi, K. S., Herb, C., Sanford, W., 2016, Use of multiple age tracers to estimate groundwater residence times and long-term recharge rates in arid southern Oman: *Applied Geochemistry*, 74, 67-83.
- Neuman S.P., and Witherspoon P.A., 1972, Field Determination of the Hydraulic Properties of Leaky Multiple Aquifer Systems, *Water Resources Research*, 8, 1284-1298.
- Pacheco-Martínez, J., Hernandez-Marín, M., Burbey, T.J., González-Cervantes, N., Ortiz-Lozano, J.Á., Zermeño-De-Leon, M.E., Solís-Pinto, A., 2013, Land subsidence and ground failure associated to groundwater exploitation in the Aguascalientes Valley, México: *Engineering Geology*, 164, 172-186.
- POEA (Periódico Oficial del Estado de Aguascalientes), 2013, H Ayuntamiento del Municipio de Aguascalientes. Plan de Acción Climática Municipal Retrieved from <<http://ordenjuridico.gob.mx/Documentos/Estatal/Aguascalientes/Todos%20los%20Municipios/wo84747.pdf>> query date: may 2018.
- Qin, D., Qian, Y., Han, L., Wang, Z., Li, C., Zhao, Z., 2011, Assessing impact of irrigation water on groundwater recharge and quality in arid environment using CFCs, tritium and stable isotopes, in the Zhangye Basin, Northwest China: *Journal of Hydrology*, 405, 194-208.
- Rushton, K.R., 1988, Numerical and Conceptual Models for Recharge Estimation in Arid and Semi-Arid Zones, in Simmers, I. (ed.), *Estimation of Natural Groundwater Recharge*, ATO ASI Series (Series C: Mathematical and Physical Sciences): Dordrecht, Springer, 222, 223-238.
- Scanlon, B.R., Healy, R.W., Cook, P.G., 2002, Choosing appropriate techniques for quantifying groundwater recharge: *Hydrogeology Journal*, 10(1), 18-39.
- Scanlon, B.R., Keese K.E., Flint A.L., Flint L.E., Gaye C.B., Edmunds W.M., Simmers I., 2006, Global synthesis of groundwater recharge in semiarid and arid regions: *Hydrological Processes*, 20, 3335-3370.
- Scanlon, B.R., Mukherjee, A., Gates, J., Reedy, R.C., Sinha, A.K., 2010, Groundwater recharge in natural dune systems and agricultural ecosystems in the Thar Desert region, Rajasthan, India: *Hydrogeology Journal*, 18(4), 959-972.
- Sharda, V.N., Kurothe, R.S., Sena, D.R., Pande, V.C., Tiwari, S.P., 2006, Estimation of groundwater recharge from water storage structures in a semi-arid climate of India: *Journal of Hydrology*, 329(1), 224-243.
- Simmers, I., 1998, (ed.), *Estimation of Natural Groundwater Recharge*, NATO ASI Series (Series C: Mathematical and Physical Sciences): Dordrecht, Springer, 222, 405 pp.
- Sophocleous, M.A., 1991, Combining the soilwater balance and water-level fluctuation methods to estimate natural groundwater recharge: Practical aspects: *Journal of Hydrology*, 124, 229-241.
- Tritscher, P., Read, W.W., Broadbridge, P., 2000, Specific yield for a two-dimensional flow: *Water Resources Research*, 36(6), 1393-1402.
- UNAM (Universidad Nacional Autónoma de México), UAQ (Universidad Autónoma de Querétaro), 2002, *Estudio Integral sobre la problemática del agua, subsidencia y sismicidad en el valle de Aguascalientes*. Aguascalientes, Aguascalientes, México, Instituto del Agua del Estado de Aguascalientes (INAGUA), Reporte no publicado, 433pp.
- Vélez Otalvaro, M. V., 2004, *Métodos para determinar la recarga de un acuífero*, in Primer Congreso Colombiano de Hidrogeología, Medellín, Colombia, Universidad Nacional de Colombia, Retrieved from <<http://bdigital.unal.edu.co/4442/>>, query date: april 2015.
- Wang, B., Jin M., Nimmo J.R., Yang L., Wang W., 2008, Estimating groundwater recharge in Hebei Plain, China under varying land use practices using tritium and bromide tracers: *Journal of Hydrology*, 356, 209-222.
- Zermeño-Villalobos, A., 2016, *Utilización de modelos numéricos para entender el rol de la zona vadosa en el proceso de recarga natural*: Aguascalientes, Ags., Universidad Autónoma de Aguascalientes, Master's Thesis, 160 pp.

Manuscript received: July 25, 2018

Corrected manuscript received: August 20, 2018

Manuscript accepted: August 24, 2018