



Ecology

Soil nematodes associated with different land uses in the Los Tuxtlas Biosphere Reserve, Veracruz, Mexico

Nematodos del suelo asociados a diferentes usos del suelo en la Reserva de la Biosfera Los Tuxtlas, Veracruz, México

Francisco Franco-Navarro^{a,*}, Damaris Godinez-Vidal^b

^a Programa de Fitopatología, Colegio de Postgraduados-Campus Montecillo, Km. 36.5 Carretera México-Texcoco, 56230 Montecillo, Texcoco, Estado de México, Mexico

^b Departamento de Biología Molecular de Plantas, Instituto de Biotecnología, Universidad Nacional Autónoma de México, Av. Universidad Núm. 2001, Col. Chamilpa, 62210 Cuernavaca, Morelos, Mexico

Received 21 January 2016; accepted 29 August 2016

Available online 21 February 2017

Abstract

Modification of above-ground land use leads to many changes in the below-ground rhizosphere. A study was conducted of soil nematodes and their diversity associated with different land uses in the Biosphere Reserve Los Tuxtlas, Mexico. Three sites were selected to investigate 4 types of land uses: natural forest, secondary forest, pasture, and maize fields. Total abundance of nematodes and estimators based on generic and diversity indices were assessed and compared between the 4 land uses and sites. Fifty-three families and 124 genera of nematodes were identified from the study area. The dominant families were Criconeematidae, Hoplolaimidae, Cephalobidae, and Tylenchidae, and the most abundant genera in this study were *Helicotylenchus*, *Discocriconeemella*, *Tylenchus*, *Steinernema* and *Mesocriconeema*. The greatest nematode abundance, generic richness, and diversity were found in natural forest, closely followed by secondary forest. Intensive (largely monocrop) agricultural systems, represented by maize fields and pasture, had low generic richness and significantly less diversity than non-disturbed systems. Most of the estimators and indices were useful in showing the significant effects of different land uses on soil nematodes in Los Tuxtlas, Mexico. This study is the first of its type to be carried out in the Biosphere Reserve Los Tuxtlas, being the first report of soil nematodes that shows the effects of the land use changes that have been made in recent years.

© 2017 Universidad Nacional Autónoma de México, Instituto de Biología. This is an open access article under the CC BY-NC-ND license (<http://creativecommons.org/licenses/by-nc-nd/4.0/>).

Keywords: Below-ground biodiversity; Neotropical rain forest; Nematodes ecology; Soil disturbance

Resumen

Las modificaciones en el uso de suelo y en la vegetación conducen a varios cambios en la rizosfera de las plantas. Se llevó a cabo un estudio con el fin de conocer los nematodos del suelo y su diversidad, asociados a diferentes usos de suelo en la Reserva de la Biosfera Los Tuxtlas, México. Se seleccionaron 3 sitios con 4 tipos de uso de suelo (bosque natural, bosque secundario, pastizal y maizal). Para los 4 usos de suelo se calcularon y compararon tanto la abundancia total de nematodos como algunos estimadores basados en géneros e índices de diversidad. Se identificaron 53 familias y 124 géneros de nematodos dentro del área de estudio; las familias dominantes fueron Criconeematidae, Hoplolaimidae, Cephalobidae y Tylenchidae y los géneros más abundantes en el presente estudio fueron *Helicotylenchus*, *Discocriconeemella*, *Tylenchus*, *Steinernema* y *Mesocriconeema*. La mayor abundancia de nematodos, riqueza de géneros y diversidad, se presentaron en el bosque natural, seguido por el bosque secundario. En los sistemas agrícolas intensivos, representados por los pastizales y los maizales, la riqueza de géneros y la diversidad fueron menores, ello en comparación con lo observado en los sistemas menos perturbados. La mayoría de los estimadores e índices de diversidad fueron

* Corresponding author.

E-mail address: ffranco@colpos.mx (F. Franco-Navarro).

Peer Review under the responsibility of Universidad Nacional Autónoma de México.

útiles para establecer, de manera significativa, los efectos de diferentes usos de suelo sobre los nematodos edáficos en Los Tuxtlas, México. El presente estudio es el primero en su tipo que se realiza en la Reserva de la Biosfera Los Tuxtlas, ya que representa el primer reporte sobre la nematofauna edáfica en dicha zona, reflejando los efectos que conlleva el cambio de uso de suelo que ha venido sucediendo en los últimos años.

© 2017 Universidad Nacional Autónoma de México, Instituto de Biología. Este es un artículo Open Access bajo la licencia CC BY-NC-ND (<http://creativecommons.org/licenses/by-nc-nd/4.0/>).

Palabras clave: Biodiversidad debajo del suelo; Bosque lluvioso neotropical; Ecología de nematodos; Alteración del suelo

Introduction

Nematodes are ubiquitous inhabitants of soil systems due to their abundance, large number of species, adaptive strategies, functionality in multi-trophic groups, and their contribution to soil biomass (Ettema & Bongers, 1993; Laakso & Setälä, 1999; Neher & Campbell, 1996; Pen-Mouratov, Rakhimbaev, & Steinberger, 2003; Yeates, Ferris, Moens, & van der Putten, 2009). Nematodes are important components of the detritus food webs (Freckman, 1988; Söhlenius, Bostrom, & Sandor, 1987), and habitat disturbances affecting the soil microenvironment and food resources can cause changes in their diversity (Freckman & Ettema, 1993). Various studies have demonstrated that nematode abundance often declines significantly when primary ecosystems are disturbed (Ferris, Bongers, & de Goede, 2001; Griffiths, Daniell, Donn, & Neilson, 2012; Hodda, Bloemers, Lawton, & Lamshead, 1997; Zhao & Neher, 2013), whereas disturbance by cultivation in agroecosystems may cause an increase in abundance, probably due to resources provided by incorporation of crop wastes (Freckman & Ettema, 1993).

Nematodes have biological characteristics and attributes that associate them with ecological processes in soil, including mineralization of plant nutrients, nutrient cycling, and decomposition of organic matter (Griffiths, 1994; Liang, Lavian, & Steinberger, 2001; Neher, 1999, 2001; Thornton & Matlack, 2002), which allow them to be used as biological indicators of disturbances that occur in terrestrial ecosystems (Baxter, Rowan, McKenzie, & Neilson, 2013; Ettema & Bongers, 1993; Freckman & Ettema, 1993; Griffiths et al., 2012; Ito, Araki, Komatsuzaki, Kanedo, & Ohta, 2015).

Few recent records exist concerning the nematodes associated with Mexican plant communities (Zullini, 1973, 1977a, 1977b) or the diversity of nematodes in Mexican Reserves (Mundo-Ocampo, Dorado, Baldwin, Morales, & Nadler, 2001), and none of these studies investigate the impact of land use changes on soil nematodes that may have occurred in those areas. The present study is not only an inventory of soil nematodes from the buffer zone of Los Tuxtlas, but it also documents the impact of land use change on soil biodiversity in one of the most important protected areas in Mexico, as measured by the composition of soil nematode communities. Accepting that nematodes play an important role in the functioning of soil and are also quite sensitive to changes in their microenvironment, this study has the following objectives: (i) to conduct an inventory of the soil nematodes from the buffer zone of the Biosphere Reserve Los Tuxtlas, Veracruz, Mexico; (ii) to calculate generic estimators and diversity indices based on soil nematodes, and (iii) to determine the

effect of land use changes in the study area on soil nematodes by the measurement of common diversity indices.

Materials and methods

Field work was conducted in the Biosphere Reserve Los Tuxtlas (18°10'–18°45' N, 94°42'–95°27' W) located in Veracruz, Mexico. This reserve is the northernmost extension of the Neotropical rain forest and is one of the protected areas in which the processes of deforestation have been documented for prolonged periods (Dirzo & García, 1992; Martínez-Ramos, Ortiz-Rodríguez, Piñero, Dirzo, & Sarukhán, 2016).

Three sites around the reserve (López Mateos, Venustiano Carranza, and San Fernando) were chosen and 4 types of land use were selected from each site: natural forest, secondary forest, pasture, and maize fields. Natural forest in the context of this study included those areas with minimal or no recent disturbance; secondary forest included areas with previous disturbance events but in a recovery process; pasture included tracts of land supporting grass or similar vegetation eaten by domestic grazing animals; and maize fields those sowed with maize, and sometimes incorporating squash and/or beans.

Eight sampling points were established in each distinct land use area (32 soil sampling points in each locality, 96 overall), following a grid pattern with a distance between points of at least 200 m. Sampling points were positioned where grid lines crossed and 8 soil cores (of approximately 100 g each) were taken from each sampling point at a depth of 0 to 20 cm, using a 5 cm diameter soil auger tube drawn from 2 imaginary concentric circles around each point. Four cores were taken on the perimeter of the inner circle (3 m radius) and another 4 were taken on that of the outer circle (6 m radius). The 8 cores from each sampling point were combined into a single sample in a plastic bag, placed in a cool box to protect against overheating, and transported to the laboratory.

Sub-samples of 300 mL of soil were taken from each sample and the nematodes therein were extracted by sieving and then by sugar flotation (Hooper, 1986b). Once extracted, nematodes were gently killed by heating to 60 °C for 1 min and then fixed with cold 4% formalin (Hooper, 1986a). The suspension of fixed nematodes from each sample was adjusted to a volume of 10 mL and the nematodes in each of 3, 1 mL aliquots were counted. The total number of nematodes per sample was estimated from the mean of the 3 counts. After counting, samples were processed by mass dehydration in order to draw water out of the nematodes and replace it with glycerin (Franco-Navarro, 1999); 100 nematodes were picked at random and mounted in glycerine

on permanent slides by the wax ring method (Hooper, 1986a) for identification under a compound microscope. If possible, 100 nematodes from each sampling site were identified to genus. All the nematodes that were collected and mounted are deposited in the Nematode Collection of the Laboratory of Nematology at the Colegio de Postgraduados, Campus Montecillo.

Accumulation curves for genera were obtained using Species Diversity & Richness software[®] (1998) to compare richness of genera among land uses. To determine the inventory completeness at the generic level for each land use, 3 estimates were used: Chao2, Jackknife and bootstrap (Colwell & Coddington, 1995). Comparison of abundance and generic evenness among land uses was assessed through dominance-diversity graphs, also known as abundance-range graphs (Feinsinger, 2001). Total abundance of nematodes and averages of generic richness per land use, as well as dominance (λ) that was used to assess dominance in all nematode genera in the sample with $\lambda = \sum p_i^2$, where p_i is the proportion of i th taxon (McSorley & Frederick, 1996; Pen-Mouratov & Steinberger, 2005), were also estimated. The diversity of soil nematode genera was measured with 2 indices using the Species Diversity & Richness software[®] (1998): (1) Simpson's index (D), which is heavily weighted toward the most abundant species (genus) in a sample (where $D = 1/C$, $C = \sum p_i^2$, $p_i^2 = N_i(N_i - 1)/N_T(N_T - 1)$, with N_i as the number of individuals in the i th genus and N_T as the total number of individuals in the sample) (Freckman & Ettema, 1993), and (2) Shannon–Wiener index (H'), an index weighted toward rare species (genera) (where $H' = -\sum p_i(\ln p_i)$, p_i being the proportion of each taxon (genus) in the total population) (McSorley & Frederick, 1996; Pen-Mouratov et al., 2003; Pen-Mouratov & Steinberger, 2005).

Total abundance, generic richness, dominance, and generic diversity of soil nematodes by land use were compared by means of analysis of variance (Anova) and comparisons of means were tested using Tukey's studentized range (HSD) test. All statistical procedures were performed using Statistical Analysis System software (SAS, 2005; http://www.sas.com/es_mx/software/analytics/stat.html); differences with $p < 0.05$ were considered significant.

Results

One hundred and twenty-four genera belonging to 13 orders and 53 families were identified; only 6 morph genera of nematodes could not be identified to genus level (Table 1). One hundred and four genera were collected in natural forest, 90 in secondary forest, 107 in pasture, and 79 in maize fields (Table 2). From the overall genera collected, 8 were detected only in natural forest (*Paraphanolaimus*, *Desmocolex*, *Odonotopharynx*, *Epidorylaimus*, *Bursiella*, *Pellioiditis*, *Aorolaimus*, *Hemicycliophora*), 3 only in secondary forest (*Labronema*, *Bastiana*, *Microlaimus*), 9 only in pasture (*Dactyloaxoconchium*, *Oxybelondira*, *Takamangai*, *Ironus*, *Stenonchulus*, *Alloionema*, *Panagrocephalus*, *Panagrolaimus*, *Coslenchus*) and 5 only in maize fields (*Anchidiplogaster*, *Acephadorylaimus*, *Carcharolaimus*, *Crustorhabditis*, *Panagrobelus*). Sixty-one genera occurred at sites characterized by all 4 land-uses (Table 1).

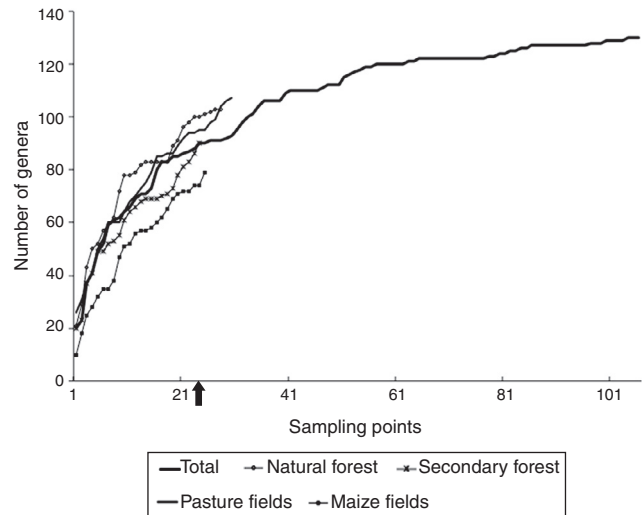


Figure 1. Accumulation curve for genera of soil nematodes associated with four land uses inside the Biosphere Reserve Los Tuxtlas, Veracruz, Mexico. ↑ indicates sampling points per land use ($n = 24$). Total = all samples taken in the study area ($n = 96$).

Families with the greatest abundance across all land uses were: Criconeematidae > Hoplolaimidae > Cephalobidae > Tylenchidae. The most abundant genera in this study were: *Helicotylenchus*, the dominant genus in pasture and maize fields, *Discocriconebella*, which was dominant in natural and secondary forests, *Tylenchus*, an herbivore with high relative abundances in all land uses but particularly in pasture, and *Steinernema*, a bacterial feeder and entomopathogenic nematode with high values in both natural and secondary forests (Table 1). The genera with the lowest densities overall in sampled sites were *Ironus*, *Carcharolaimus*, *Crustorhabditis*, and *Stenonchulus* (Table 1).

A total of 97,054 soil nematodes were extracted from all soil samples ($n = 96$); 33% in natural forest, 31% in pasture, 21% in secondary forest and 15% in maize fields. Total abundance of soil nematodes by land use ($n = 24$) was significantly different ($p < 0.05$, $F = 3.23$) between natural forest (32,018 individuals) and maize fields (14,095 individuals), but no statistically significant differences were found between natural forest, pasture (30,295 individuals), and secondary forest (20,646 individuals) ($p > 0.05$, $F = 2.16$), despite the presence of more nematodes in the natural forest (5.3% and 35.5% more, respectively) (Table 1). Average generic richness showed significant differences ($p < 0.001$, $F = 6.84$) among land uses with the highest average in natural forest (26), followed by secondary forest and pasture (20 in both cases), and maize fields (18). Conversely, dominance of genera was significantly higher ($p < 0.05$, $F = 3.76$) in pasture (0.23 ± 0.06) than in secondary forest, maize fields, and natural forest (0.17 ± 0.04 , 0.17 ± 0.03 and 0.14 ± 0.03 , respectively).

Generic accumulation curves for all land uses did not reach an asymptote but all land uses may have reached a plateau with more than 100 samples (Fig. 1). Diversity estimates indicated that, in natural forest, more than 89% of the genera present were captured, in secondary forest and pasture more than 80% and

Table 1

Nematode genera associated with four land uses in Los Tuxtlas, Veracruz, Mexico, and their abundance in 96 soil samples (300 mL) taken and analyzed from the study area.

Family/genus	Land uses			
	Natural forest (n = 24)	Secondary forest (n = 24)	Pasture (n = 24)	Maize fields (n = 24)
Achromadoridae				
<i>Achromadora</i>	238	126	183	60
Actinolaimidae				
<i>Actinolaimus</i>	0	0	10	12
Aetholaimidae				
<i>Aetholaimus</i>	0	9	0	3
Alaimidae				
<i>Alaimus</i>	287	146	95	248
<i>Amphidelus</i>	7	0	33	0
<i>Paramphidelus</i>	195	23	92	0
Alloionematidae				
<i>Alloionema</i>	0	0	7	0
Anguinidae				
<i>Ditylenchus</i>	43	0	35	90
Aphelenchidae				
<i>Aphelenchus</i>	641	396	569	953
Aphelenchoididae				
<i>Aphelenchoides</i>	459	179	130	130
Aporcelaimidae				
<i>Aporcelaimium</i>	766	490	678	203
<i>Paraxonchium</i>	107	49	49	176
<i>Takamangai</i>	0	0	10	0
Bastianiidae				
<i>Bastiania</i>	0	11	0	0
<i>Dintheria</i>	15	18	4	13
Belondiridae				
<i>Axonchium</i>	344	143	158	54
<i>Belondira</i>	165	303	473	40
<i>Belondirella</i>	7	20	54	0
<i>Dactyluroaxonchium</i>	0	0	8	0
Belondiridae				
<i>Oxybelondira</i>	0	0	18	0
<i>Phallaxonchium</i>	0	11	7	0
Belondiroidea	7	0	6	7
Belonolaimidae				
<i>Trophorus</i>	164	329	70	193
Carcharolaimidae				
<i>Carcharolaimus</i>	0	0	0	3
Cephalobidae				
<i>Acrobeles</i>	673	501	622	519
<i>Acrobelloides</i>	525	580	1,176	546
<i>Cephalobus</i>	179	30	52	144
<i>Cervidellus</i>	50	19	69	63
<i>Chiloplacus</i>	82	125	85	0
<i>Eucephalobus</i>	54	127	100	41
<i>Heterocephalobus</i>	776	557	595	260
<i>Panagrocephalus</i>	0	0	18	0
<i>Teratolobus</i>	24	41	17	0
Chambersiellidae				
<i>Macrolaimellus</i>	7	14	0	0
<i>Microaimus</i>	0	11	0	0
<i>Trualaimus</i>	0	14	8	0
Criconematidae				
<i>Criconema</i>	632	569	19	60
<i>Criconemella</i>	11	29	3	0

Table 1 (Continued)

Family/genus	Land uses			
	Natural forest (n = 24)	Secondary forest (n = 24)	Pasture (n = 24)	Maize fields (n = 24)
<i>Criconemoides</i>	267	32	3	20
<i>Crossonema</i>	17	7	0	0
<i>Discocriconemella</i>	7,081	3,839	133	412
<i>Hemicycliophora</i>	179	0	0	0
<i>Mesocriconema</i>	561	3,100	542	767
<i>Ogma</i>	317	142	0	0
Desmocolecidae				
<i>Desmocolex</i>	59	0	0	0
Diphterophoridae				
<i>Diphterophora</i>	0	3	0	4
Diplogasteridae				
<i>Anchidiplogaster</i>	0	0	0	7
<i>Butlerius</i>	13	11	33	13
Diplogasteridae				
<i>Metadiplogaster</i>	91	0	10	0
<i>Pareudiplogaster</i>	105	36	21	49
Diploscapteridae				
<i>Diploscapter</i>	201	252	1,064	218
Drilonematidae				
<i>Drilocephalobus</i>	115	40	300	0
Dorylaimidae				
<i>Amphidorylaimus</i>	41	0	59	0
<i>Coomansinema</i>	64	0	22	3
<i>Laimydorus</i>	11	0	44	0
<i>Mesodorylaimus</i>	347	35	168	121
<i>Prodorylaimus</i>	1,262	623	765	158
Dorylaimoidea	14	0	4	0
Halaphanolaimidae				
<i>Aphanolaimus</i>	711	157	228	127
<i>Paraphanolaimus</i>	9	0	0	0
Heteroderidae				
<i>Meloidogyne</i>	523	130	276	230
Hoplolaimidae				
<i>Aorolaimus</i>	60	0	0	0
<i>Helicotylenchus</i>	2,100	1,541	11,659	2,516
<i>Rotylenchulus</i>	222	83	20	30
Ironidae				
<i>Ironus</i>	0	0	4	0
Monhysteridae				
<i>Eumonhystera</i>	11	10	11	8
<i>Monhystera</i>	137	0	36	120
Mononchidae				
<i>Comiconchus</i>	0	12	7	0
<i>Iotonchus</i>	90	3	74	93
<i>Miconchus</i>	123	91	24	33
<i>Mononchus</i>	72	45	63	39
<i>Prionchulus</i>	135	29	73	26
Mylonchulidae				
<i>Mylonchulus</i>	175	94	92	50
Neodiplogasteridae				
<i>Pristionchus</i>	143	13	29	29
Nordiidae				
<i>Acephadorylaimus</i>	0	0	0	11
<i>Longidorella</i>	127	23	4	0

Table 1 (Continued)

Family/genus	Land uses			
	Natural forest (n = 24)	Secondary forest (n = 24)	Pasture (n = 24)	Maize fields (n = 24)
<i>Oriverutus</i>	51	14	3	7
<i>Paroriverutus</i>	0	0	166	60
Nygellidae				
<i>Nygellus</i>	0	46	147	6
Nygolaimellidae				
<i>Aporcelaimoides</i>	258	11	77	148
Nygolaimidae				
<i>Aquatides</i>	112	0	197	5
<i>Nygolaimus</i>	58	11	47	0
Odontopharyngidae				
<i>Odontopharynx</i>	14	0	0	0
Onchulidae				
<i>Stenonchulus</i>	0	0	3	0
Panagrolaimidae				
<i>Panagrobelus</i>	0	0	0	7
<i>Panagrolaimus</i>	0	0	10	0
Plectidae				
<i>Anaplectus</i>	318	201	116	26
<i>Plectus</i>	165	90	375	148
Plectinae1	105	14	0	0
Plectidae				
Plectinae2	49	0	25	0
<i>Wilsonema</i>	4	3	6	7
Pratylenchidae				
<i>Pratylenchus</i>	121	81	307	553
Prismatolaimidae				
<i>Prismatolaimus</i>	461	352	792	302
Pseudodiplogasteroididae	105	36	21	49
<i>Pseudodiplogasteroides</i>	413	146	403	134
Qudsinematidae				
<i>Allodorylaimus</i>	119	68	50	127
<i>Epidorylaimus</i>	11	0	0	0
<i>Eudorylaimus</i>	145	0	25	0
<i>Labronema</i>	0	11	0	0
<i>Microdorylaimus</i>	215	243	108	12
<i>Thorneella</i>	374	62	174	37
Rhabditidae				
<i>Bursiella</i>	21	0	0	0
<i>Crustorhabditis</i>	0	0	0	4
<i>Dolichorhabditis</i>	29	21	4	0
<i>Mesorhabditis</i>	419	199	481	481
<i>Paradoxorhabditis</i>	111	21	56	30
<i>Pellioiditis</i>	8	0	0	0
<i>Prodontorhabditis</i>	628	81	142	42
<i>Protorhabditis</i>	143	53	108	95
<i>Rhabditella</i>	40	23	28	61
Rhabditidae	0	21	6	0
<i>Rhabpanus</i>	17	0	7	0
<i>Stomachorhabditis</i>	59	0	64	4
<i>Teratorhabditis</i>	175	16	22	31
<i>Xylorhabditis</i>	62	0	130	36
Rhabditonematidae				
<i>Rhabditonema</i>	75	44	477	61
Rhabdolaimidae				
<i>Rhabdolaimus</i>	117	5	12	0

Table 1 (Continued)

Family/genus	Land uses			
	Natural forest (n = 24)	Secondary forest (n = 24)	Pasture (n = 24)	Maize fields (n = 24)
Steinernematidae				
<i>Steinernema</i>	1,468	1,735	751	776
Teratocephalidae				
<i>Euteratocephalus</i>	10	0	22	0
<i>Steratocephalus</i>	18	4	3	0
<i>Teratocephalus</i>	42	24	92	0
Trichodoridae				
<i>Trichodorus</i>	25	7	0	0
Tripylidae				
<i>Tripyla</i>	113	50	30	29
<i>Tripylina</i>	65	7	0	0
<i>Trischistoma</i>	66	26	33	56
Tylenchidae				
<i>Coslenchus</i>	0	0	29	0
<i>Psilenchus</i>	0	42	176	72
<i>Tylenchus</i>	2,531	1,305	2,770	1,492
Tylenchulidae				
<i>Gracilacus</i>	70	99	6	7
<i>Paratylenchus</i>	352	92	283	302
Xiphinematidae				
<i>Xiphinema</i>	520	197	311	35
Total	32,018a	20,646a	30,295a	14,095b

82%, respectively, and in maize fields more than 78%. The estimates predict that as many as 147 genera could be recorded for soil nematodes from all sites studied (Table 2).

In dominance-diversity graphs for each land use, slopes were similar, although neither the abundance distribution pattern nor the hierarchical order of genera were similar (Fig. 2). In natural forest, 1 genus was highly dominant (*Discocriconemella*), 4 were moderately dominant (*Tylenchus*, *Helicotylenchus*, *Steinernema* and *Prodorylaimus*), and 3 were moderately low in abundance (*Macrolaimellus*, *Amphidelus*, and *Belondira*), whereas in secondary forest 2 genera were dominant (*Discocriconemella* and *Mesocriconema*), 3 were moderately high in abundance (*Steinernema*, *Helicotylenchus*, and *Tylenchus*), and 3 had low abundance (*Stenonchulus*, *Iotonchus*, and *Wilsonema*) (Fig. 2). In pasture, only 1 genus was notably abundant (*Helicotylenchus*) and 3 were moderately high in abundance (*Tylenchus*, *Acrobeloides*, and *Diploscapter*). Finally, in maize fields, 3 genera were the most abundant (*Helicotylenchus*, *Tylenchus*, and *Aphelenchus*), 2 genera were moderately high in abundance (*Steinernema* and *Mesocriconema*), and 3 genera

had low abundance (*Coomansinema*, *Aetolaimus*, and *Carcharolaimus*) (Fig. 2).

When soil nematodes in this study were assigned to trophic groups, plant parasitic nematodes and bacterial feeders were the most abundant and dominant, followed by fungal feeders, omnivores, and finally predators. Overall, the greatest number of bacterial feeders was collected from pasture and maize fields; a similar tendency was observed with fungal feeders but, in this case, the greatest number was collected from maize fields followed by pasture. Omnivores and predators showed the greatest numbers in natural and secondary forest, whereas the greatest numbers of plant parasitic nematodes were observed in secondary forest, followed by natural forest, pasture, and maize fields. A deeper analysis of the trophic structure of the soil nematode communities will be made in subsequent studies.

The highest Simpson's index was observed in natural forest (9.45 ± 1.73), significantly greater ($p < 0.05$, $F = 3.76$) than in pasture (6.28 ± 1.19) but not significantly different from secondary forest and maize fields ($p > 0.05$, $F = 2.08$) (7.58 ± 1.34 and 7.42 ± 1.22 , respectively) (Fig. 3). For Shannon's index, the

Table 2

Observed and estimated generic richness of soil nematodes associated with 4 land uses and all types of land uses in Los Tuxtlas, Veracruz, Mexico.

Genera richness	All land uses	Natural forest	Secondary forest	Pasture	Maize fields
Observed	130	104	90	107	79
Chao 2	130	104	90	107	79
Bootstrap	137.9	110.2	100.3	118.5	88.7
Jackknife	146.8	116.5	112	131.2	101.1
Completeness	89–100	89–100	80–100	82–100	78–100

Completeness is a percentage of estimated richness = (minimum/maximum) \times 100.

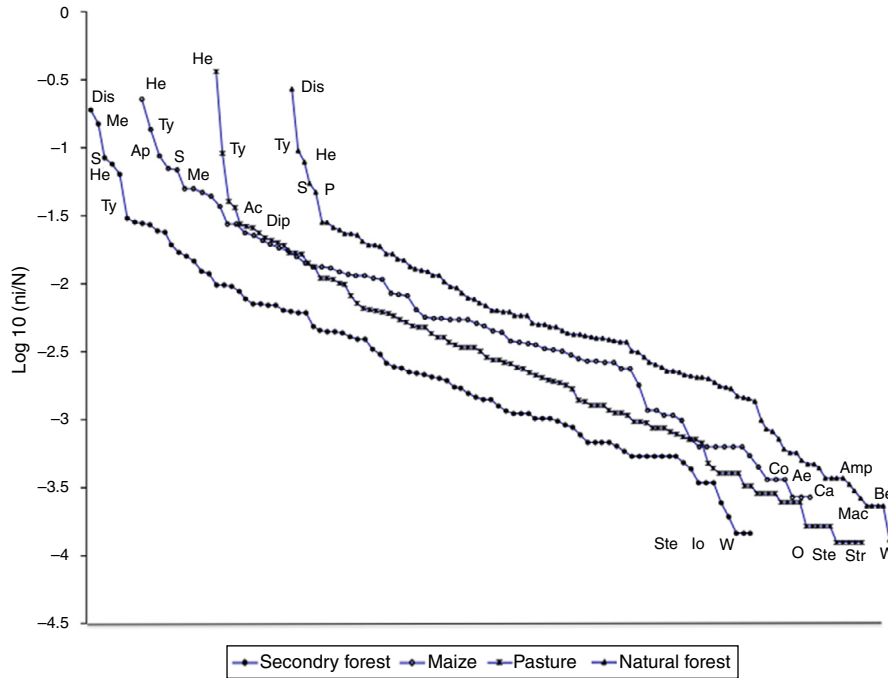


Figure 2. Dominance-diversity graphs for soil nematodes associated with 4 land uses inside the Biosphere Reserve Los Tuxtlas, Veracruz, Mexico. Dis = *Discocricionemella*, Me = *Mesocricionema*, S = *Steinernema*, He = *Helicotylenchus*, Ap = *Aphelenchus*, Ty = *Tylenchus*, Ac = *Acrobeloides*, Dip = *Diploscapter*, P = *Prodorylaimus*, Str = *Steratocephalus*, Io = *Iotonchus*, W = *Wilsonema*, Mac = *Macrolaimellus*, Amp = *Amphidelus*, Be = *Belondira*, O = *Oriverutus*, Ste = *Stenonchulus*, Co = *Coomansinema*, Ae = *Aetolaimus*, Ca = *Carcharolaimus*. N_i = number of individuals of each genus; N = number of individuals of all species.

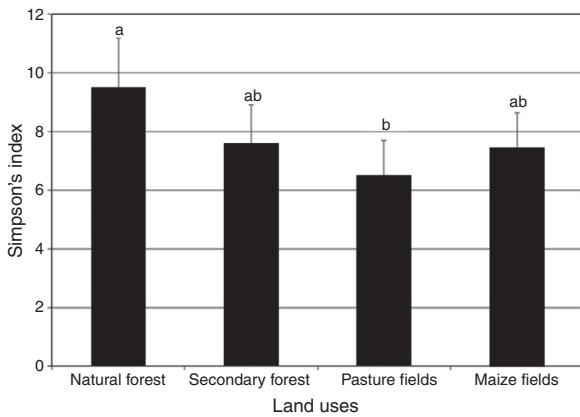


Figure 3. Simpson's index for soil nematodes associated with 4 land uses inside the Biosphere Reserve Los Tuxtlas, Veracruz, Mexico ($n = 24$).

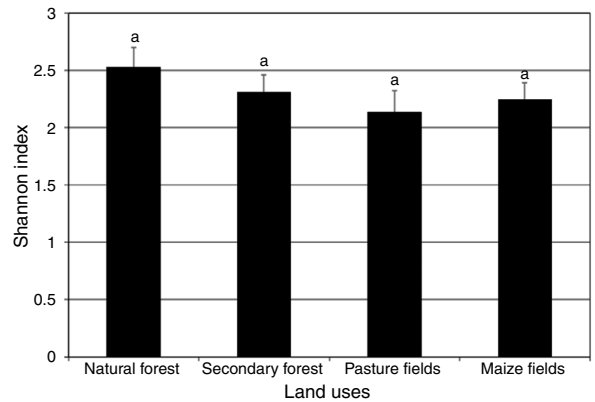


Figure 4. Shannon's index for soil nematodes associated with 4 land uses inside the Biosphere Reserve Los Tuxtlas, Veracruz, Mexico ($n = 24$).

results followed a similar pattern to that of the Simpson's index, with the highest value in natural forest (2.52 ± 0.18), followed by secondary forest (2.30 ± 0.16) and maize fields (2.24 ± 0.15), and with the lowest index in pasture (2.13 ± 0.19) ($p < 0.05$, $F = 3.40$) (Fig. 4).

Discussion

Agricultural management practices and many other human activities disturb the soil ecosystem and affect soil nematode diversity (Freckman & Ettema, 1993; Ito et al., 2015; Neher, 2001; Zhao & Neher, 2013). The different land usage areas sampled represent the main environmental ranges of land uses in the

Biosphere Reserve Los Tuxtlas that are likely to be affected in their below-ground soil biodiversity. The transition from above-ground plant heterogeneity in natural forests to extreme plant homogeneity in agriculture is reflected in the soil nematodes and their diversity.

Despite the observed and estimated number of genera being higher for pasture than natural forest, the number of nematodes and the average generic richness were higher in natural forest than in the other land uses. These 2 parameters were even higher in natural forest than values previously reported in the literature (Freckman & Ettema, 1993; Liang et al., 2001; Pen-Mouratov & Steinberger, 2005; Sohlenius et al., 1987). When the total number of genera and families from the present study are

compared with those from other studies, the numbers of genera are higher than those reported from different geographical areas and environments, mostly in temperate regions (Neher & Campbell, 1996; Neher, 1999; Thornton & Matlack, 2002; Yeates, 1984).

The greatest generic richness obtained from the natural forest in Los Tuxtlas is similar to that in other studies in which richness is lower in recently disturbed soil than in soil that has not been disturbed for several decades (Thornton & Matlack, 2002), implying eradication of species during the disturbance event (Freckman & Ettema, 1993; Hodda et al., 1997). The greatest dominance of genera was found in pastures, where *Helicotylenchus*, a typical plant feeder, was the main genus. This is a cosmopolitan genus so its high abundance, as shown by the dominance-diversity graph, indicates the dominance of this genus over other soil nematodes is a result of the great uniformity of plants characteristic of pasture. Although the dominance of *Helicotylenchus* was observed in maize fields too, the difference with respect to the next most dominant genus, *Tylenchus*, was lower than that obtained in pasture. In contrast to the disturbed systems, in natural forest and occasionally in secondary forest, the dominant genus was *Discocriconemella*, a typical plant root feeder in tropical regions of the world. Dominance of this genus reflects the lack of soil disturbance, which has allowed the persistence of this native genus instead of the exotic genera found in pasture or maize fields. When the analysis of both estimates was combined, it was observed that in non-disturbed systems the number of genera (generic richness) is greater, but without an extremely dominant genus (generic dominance) above the rest; in pasture, an intermediate value of generic richness was combined with the highest generic dominance. This suggests that in this monocropping system the land use change can eliminate some genera formerly present and promote the dominance of other, mainly exotic ones, thus permanently modifying soil nematode diversity and population structure.

Nematode trophic structure in Los Tuxtlas was dominated by plant parasites and bacterial feeders (mostly represented by the Order Rhabditida), a similar situation to that observed in studies of temperate regions (Neher, 1999; Neher & Campbell, 1996; Pen-Mouratov et al., 2003; Pen-Mouratov & Steinberger, 2005; Thornton & Matlack, 2002). In pasture and maize fields, the most abundant trophic groups were bacterial feeders and fungal feeders, in similar proportions to those found in other agricultural sites (Freckman & Ettema, 1993; McSorley & Frederick, 1996; Pen-Mouratov & Steinberger, 2005). Bacterial and fungal feeders are more abundant in disturbed soils, suggesting that disturbance improves substrate quality or resource availability, presumably thereby fostering growth of bacterial and fungal prey populations (Thornton & Matlack, 2002). On the other hand, the highest percentages of omnivores and predators were observed in natural forest and secondary forest, although they were the least abundant in comparison with other trophic groups. From their position higher in the soil food web, predators and omnivores may also have a direct or indirect effect on decomposition by controlling the biomass of microbivores (Laakso & Setälä, 1999), but they are more sensitive to soil disturbance than microbivorous nematodes (Bongers, 1990). According to

Thornton and Matlack (2002), higher populations of fungal and bacterial feeders are dependent on the absence of predators, so this interrelationship could explain the presence and proportion of colonizer groups (bacterial and fungal feeders) with respect to persistent groups (omnivores and predators) in both non-disturbed areas and in areas under agricultural management. The long-lived nematodes, such as omnivores and predators, which were more abundant in hardly disturbed and non-disturbed systems (natural and secondary forest), are associated with stable environments. However, when these habitats are then affected with inputs of organic matter and/or pollutants, or human activities like agriculture (in the case of pastures and crop fields), the increased bacterial activity favors colonizer nematodes that feed on bacteria and respond quickly to changes, whereas persistent nematodes (omnivores and predators) decrease (Freckman & Ettema, 1993).

The highest values of soil nematode diversity in Los Tuxtlas, calculated using both Simpson's index and Shannon's index, were found in natural forest. In general, the diversity indices of natural forest in this study were higher or similar to those observed in other land uses and in other reports (Freckman & Ettema, 1993; Liang, Lavian, & Steinberger, 1999; Liang et al., 2001; Pen-Mouratov et al., 2003; Yeates & King, 1997), which reflects the fact that the diversity of nematodes is favored by little or hardly disturbed soil.

In this study, the indices and generic estimators that were calculated allowed some effects of land use changes on soil nematodes and their diversity in the Mexican tropics to be detected. Nematodes were shown to be sensitive to perturbation in this study area. In little disturbed and non-disturbed areas, such as natural forest and secondary forest, richness and diversity of nematodes were significantly greater than in systems used for crop production and monocropping, such as pasture and maize fields. The simplification of above-ground plant assemblages therefore has drastic effects on below-ground nematode communities in a similar manner to that observed in other taxa.

This is the first report in Mexico on the changes brought about by human activity on soil nematode populations and diversity, both for plant-parasitic and free-living nematodes. The present study supports previous results reported in the literature and contributes to an increase in the knowledge of nematode fauna and its diversity in soils from the Mexican tropics and the changes that they undergo under the influence of different land use changes. These results may help model and predict future changes in biodiversity and species interactions with land use change.

Acknowledgements

The research was supported by the "Conservation and Sustainable Management of Below-Ground Biodiversity Project (CSM-BGBD)" in Mexico, which was funded by the Global Environmental Facility (GEF), implemented by the United Nations Environment Program (UNEP), and executed by the Tropical Soil Biology and Fertility Institute of CIAT (TSBF). In Mexico, the project was coordinated by Dr. Isabelle Barois from the Instituto de Ecología A. C. Our appreciation for

manuscript review is given to Dr. Ken Evans, Rothamsted Research, Dr. Howard Ferris, Nematology Department at University of California-Davis, and Dr. Caspar Chater, International Research Fellow at Molecular Biology of Plants Department, Instituto de Biotecnología, UNAM. The authors are indebted to Dr. Alejandro Esquivel, National University, Heredia, Costa Rica, for his support with the identification of soil nematodes, to Dr. José Antonio García-Pérez and Biol. Martín Santos for their support with field work, and to Mr. Arturo Martínez-Sánchez for technical assistance.

References

- Baxter, C., Rowan, J. S., McKenzie, B. M., & Neilson, R. (2013). Understanding soil erosion impacts in temperate agroecosystems bridging the gap between geomorphology and soil ecology using nematodes as a model organism. *Biogeosciences*, *10*, 7133–7145.
- Bongers, T. (1990). The maturity index: an ecological measure of environmental disturbance based on nematode species composition. *Oecologia*, *83*, 14–19.
- Colwell, R. K., & Coddington, J. A. (1995). Estimating terrestrial biodiversity through extrapolation. In D. L. Hawksworth (Ed.), *Biodiversity measurement and estimation* (pp. 101–118). New York: Chapman & Hall.
- Dirzo, R., & García, M. (1992). Rates of deforestation in Los Tuxtlas, a Neotropical area in southeast Mexico. *Conservation Biology*, *6*, 84–90.
- Ettema, C. H., & Bongers, T. (1993). Characterization of nematode colonization and succession in disturbed soil using the Maturity Index. *Biology and Fertility Soils*, *16*, 79–85.
- Feinsinger, P. (2001). *Designing field studies for biodiversity conservation*. Washington, DC: The Nature Conservancy and Island Press.
- Ferris, H., Bongers, T., & de Goede, R. G. M. (2001). A framework for soil food web diagnostics: an extinction of the nematode faunal analysis concept. *Applied Soil and Ecology*, *18*, 13–29.
- Franco-Navarro, F. (1999). *Descripción morfológica e histopatología inducida por una especie del género Globodera en Jaltomata procumbens en México*. Master thesis. Texcoco, Estado de México, Mexico: Colegio de Postgraduados.
- Freckman, D. W. (1988). Bacterivorous nematodes and organic-matter decomposition. *Agriculture, Ecosystems and Environment*, *24*, 195–217.
- Freckman, D. W., & Ettema, C. H. (1993). Assessing nematode communities in agroecosystems of varying human intervention. *Agriculture, Ecosystems and Environment*, *45*, 239–261.
- Griffiths, B. S. (1994). Approaches to measuring the contribution of nematodes and protozoa to nitrogen mineralization in the rhizosphere. *Soil Use and Management*, *6*, 88–90.
- Griffiths, B. S., Daniell, T. J., Donn, S., & Neilson, R. (2012). Bioindication potential of using molecular characterization of the nematode community: response to soil tillage. *European Journal of Soil Biology*, *49*, 92–97.
- Hodda, M., Bloemers, G. F., Lawton, J. H., & Lamshead, P. J. (1997). The effects of clearing and subsequent land use on abundance and biomass of soil nematodes in tropical forest. *Pedobiologia*, *41*, 279–294.
- Hooper, D. J. (1986a). Extraction of free-living stages of soil. In J. F. Southey (Ed.), *Laboratory methods for work with plant and soil nematodes* (pp. 5–30). United Kingdom: Ministry of Agriculture Fisheries and Food, Reference Book 402.
- Hooper, D. J. (1986b). Handling, fixing, staining and mounting nematodes. In J. F. Southey (Ed.), *Laboratory methods for work with plant and soil nematodes* (pp. 59–94). Ministry of Agriculture Fisheries and Food, Reference Book 402.
- Ito, T., Araki, M., Komatsuzaki, M., Kanedo, N., & Ohta, H. (2015). Soil nematode community structure affected by tillage systems and cover crop managements in organic soybean production. *Applied Soil Ecology*, *86*, 137–147.
- Laakso, J., & Setälä, H. (1999). Population and ecosystem level effects of predation on microbial feeding nematodes. *Oecologia*, *120*, 279–286.
- Liang, W., Lavian, I., & Steinberger, Y. (1999). Dynamics of nematode community composition in a potato field. *Pedobiologia*, *43*, 459–469.
- Liang, W., Lavian, I., & Steinberger, Y. (2001). Effect of agriculture management on nematode communities in a Mediterranean agroecosystem. *Journal of Nematology*, *33*, 208–213.
- Martínez-Ramos, M., Ortiz-Rodríguez, I., Piñero, D., Dirzo, R., & Sarukhán, J. (2016). Anthropogenic disturbances jeopardize biodiversity conservation within tropical rainforest reserves. *Proceedings of the National Academy of Sciences of the United States of America*, *113*, 5323–5328.
- McSorley, R., & Frederick, J. J. (1996). Nematode community structure in rows and between rows of a soybean field. *Fundamental and Applied Nematology*, *19*, 251–261.
- Mundo-Ocampo, M., Dorado, O., Baldwin, J. G., Morales, R. C., & Nadler, S. (2001). Diversidad de la fauna nematológica en la Reserva de la Biosfera Sierra de Huautla, Morelos, México. In *Abstracts of XXXIII annual meeting of the Organization of Nematologists of Tropical America*.
- Neher, D. A. (1999). Nematode communities in organically and conventionally managed agricultural soils. *Journal of Nematology*, *31*, 142–154.
- Neher, D. A. (2001). Role of nematodes in soil health and their use as indicators. *Journal of Nematology*, *33*, 161–168.
- Neher, D. A., & Campbell, C. L. (1996). Sampling for regional monitoring of nematode communities in agricultural soils. *Journal of Nematology*, *28*, 196–208.
- Pen-Mouratov, S., Rakhimbaev, M., & Steinberger, Y. (2003). Seasonal and spatial variation in nematode communities in a Negev Desert Ecosystem. *Journal of Nematology*, *35*, 157–166.
- Pen-Mouratov, S., & Steinberger, Y. (2005). Spatio-temporal dynamic heterogeneity of nematode abundance in a desert ecosystem. *Journal of Nematology*, *37*, 26–36.
- Sohlenius, B., Bostrom, S., & Sandor, A. (1987). Long-term dynamics of nematode communities in arable soil under four cropping systems. *Journal of Applied Ecology*, *24*, 131–144.
- Thornton, C. W., & Matlack, G. R. (2002). Long-term disturbance effects in the nematode communities of South Mississippi Woodlands. *Journal of Nematology*, *34*, 88–97.
- Yeates, G. W. (1984). Variation in soil nematode diversity under pasture with soil and year. *Soil Biology and Biochemistry*, *16*, 95–102.
- Yeates, G. W., Ferris, H., Moens, T., & van der Putten, W. H. (2009). The role of nematodes in ecosystems. In M. J. Wilson, & T. Kakouli-Durate (Eds.), *Nematodes as environmental indicators* (pp. 1–45). United Kingdom: CABI Publishing.
- Yeates, G. W., & King, K. L. (1997). Soil nematodes as indicators of the effect of management on grasslands in the New England Tablelands (NSW): comparison of native and improved grasslands. *Pedobiologia*, *41*, 526–536.
- Zhao, J., & Neher, D. A. (2013). Soil nematode genera that predict specific types of disturbance. *Applied Soil Ecology*, *64*, 135–141.
- Zullini, A. (1973). *Some soil and freshwater nematodes from Chiapas (Mexico). Subterranean fauna of Mexico. Part II*. Roma: Accademia Nazionale dei Lincei.
- Zullini, A. (1977a). *Some freshwater nematodes of southern Mexico and Guatemala. Subterranean fauna of Mexico. Part III*. Roma: Accademia Nazionale dei Lincei.
- Zullini, A. (1977b). *On certain moss nematodes of Central Mexico. Subterranean fauna of Mexico. Part III*. Roma: Accademia Nazionale dei Lincei.