

SUPPLEMENTARY MATERIAL

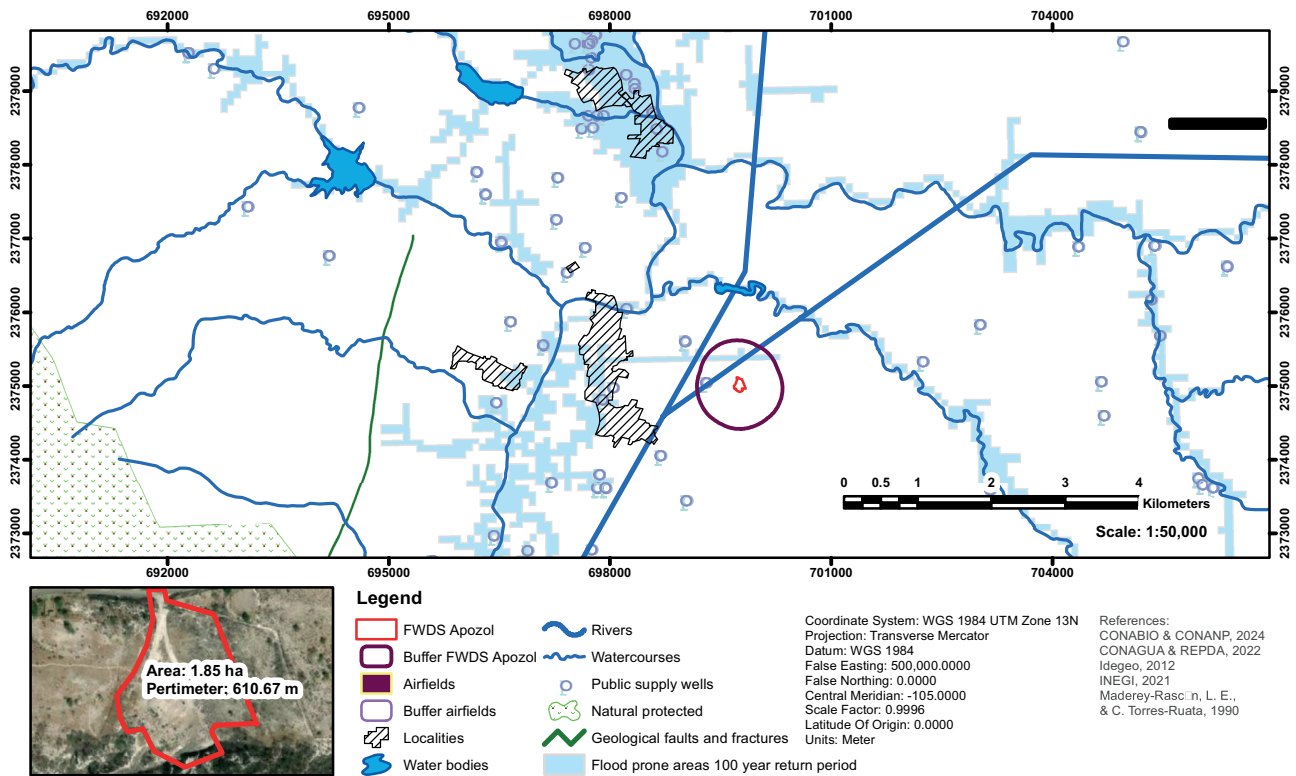


Fig. S1. Location restrictions map of the Apozol final waste disposal site.

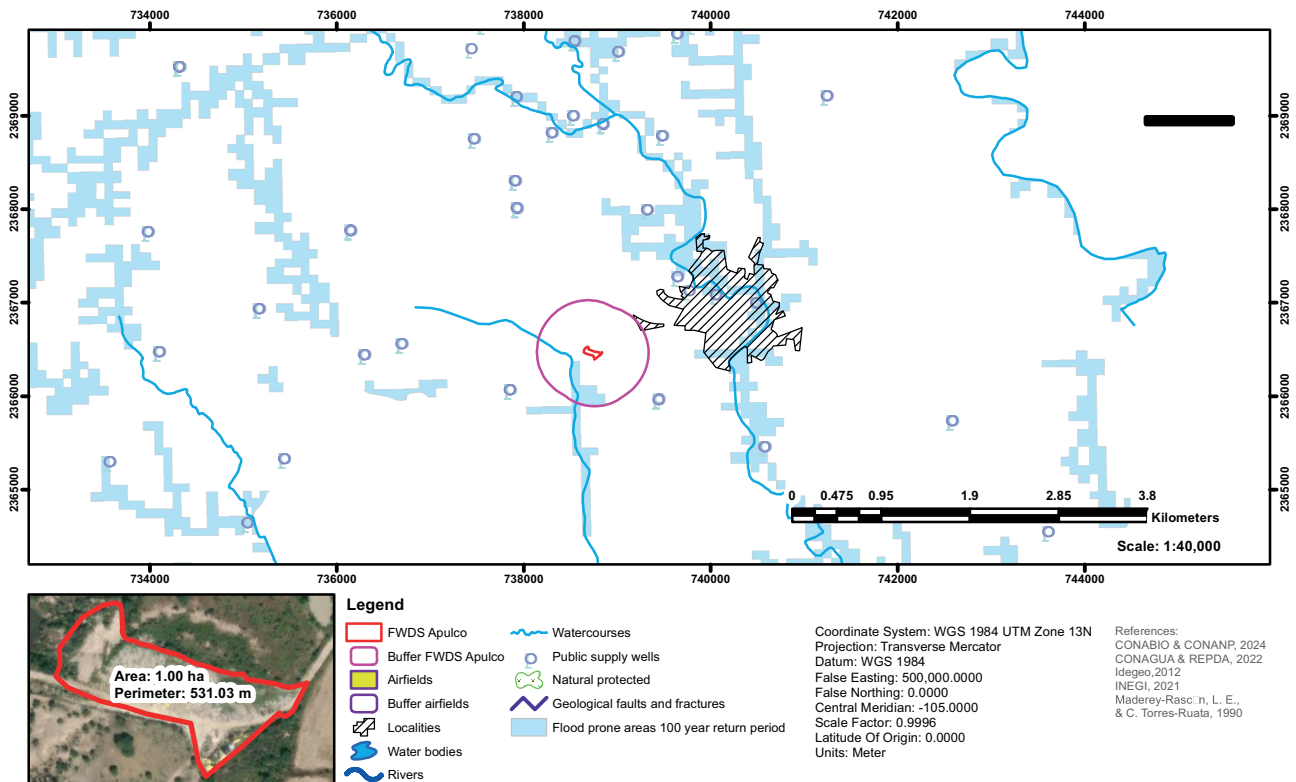


Fig. S2. Location restrictions map of the Apulco final waste disposal site.

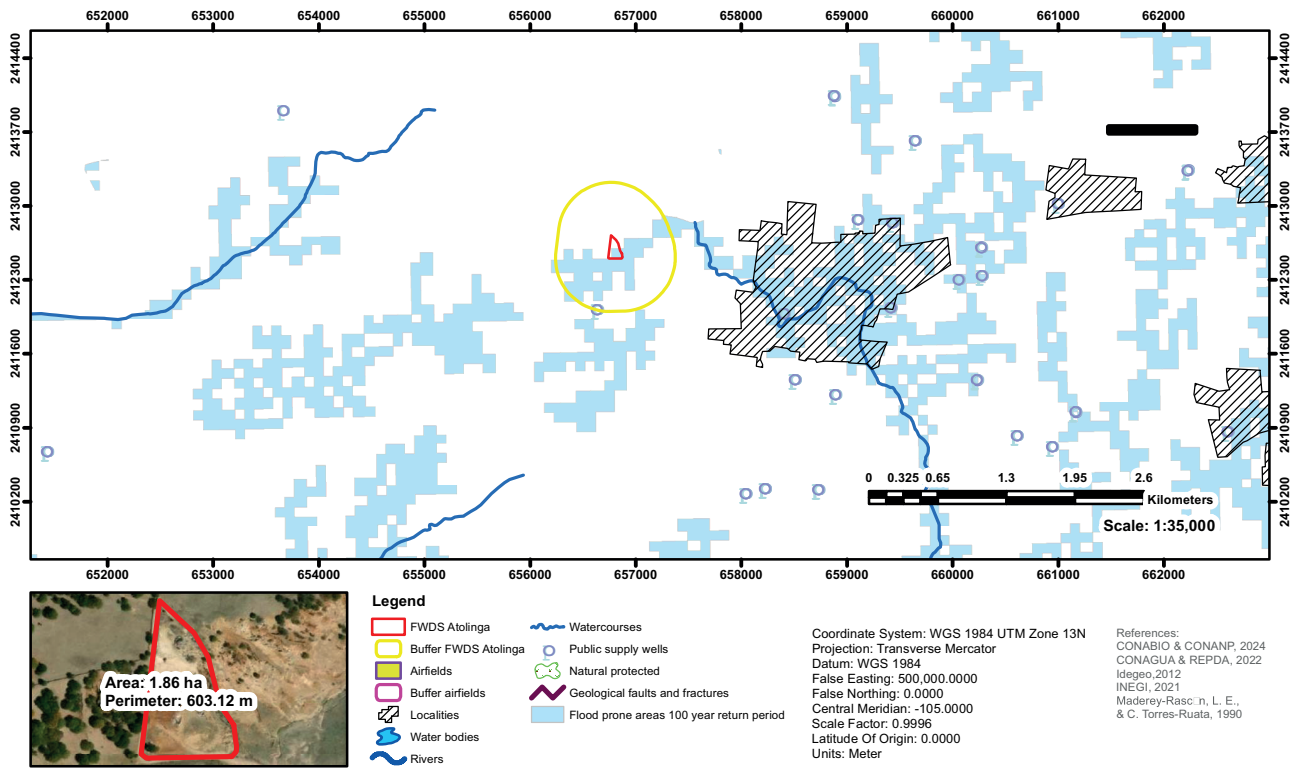


Fig. S3. Location restrictions map of the Atolinga final waste disposal site.

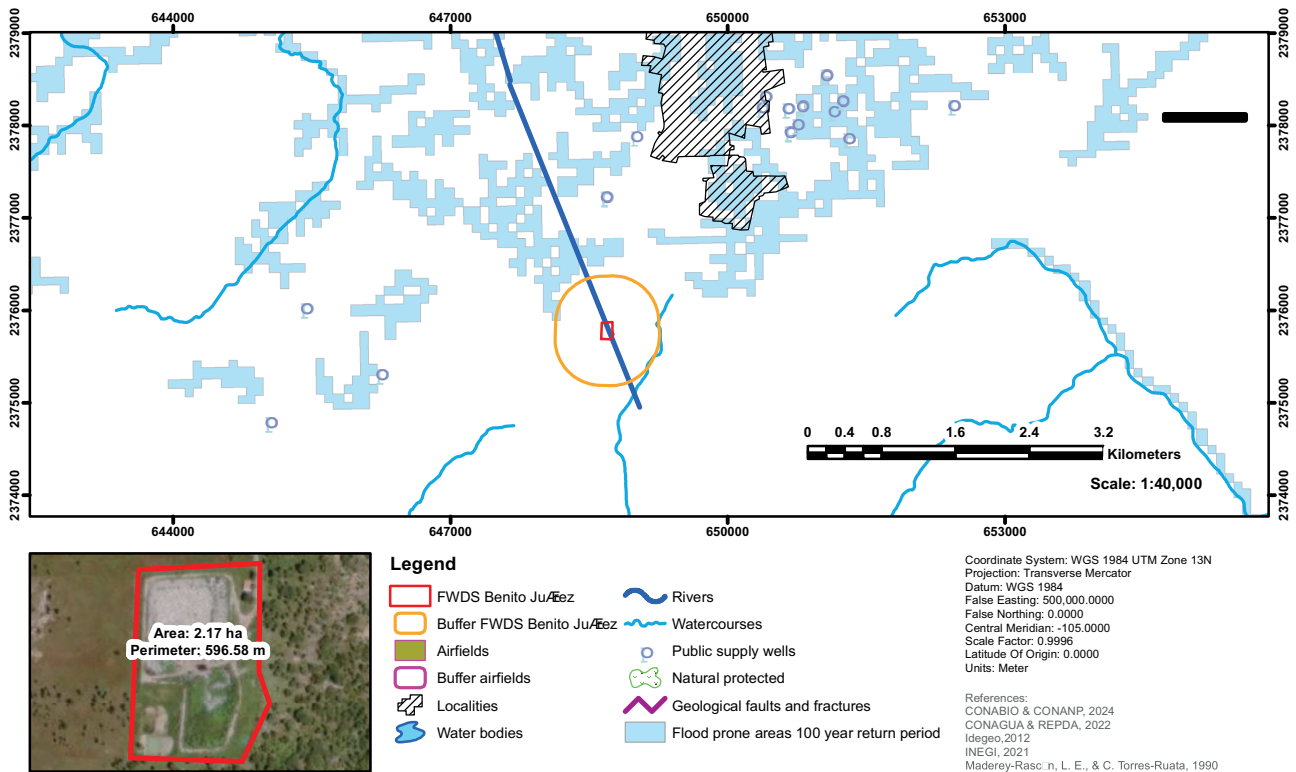


Fig. S4. Location restrictions map of the Benito Juárez final waste disposal site.

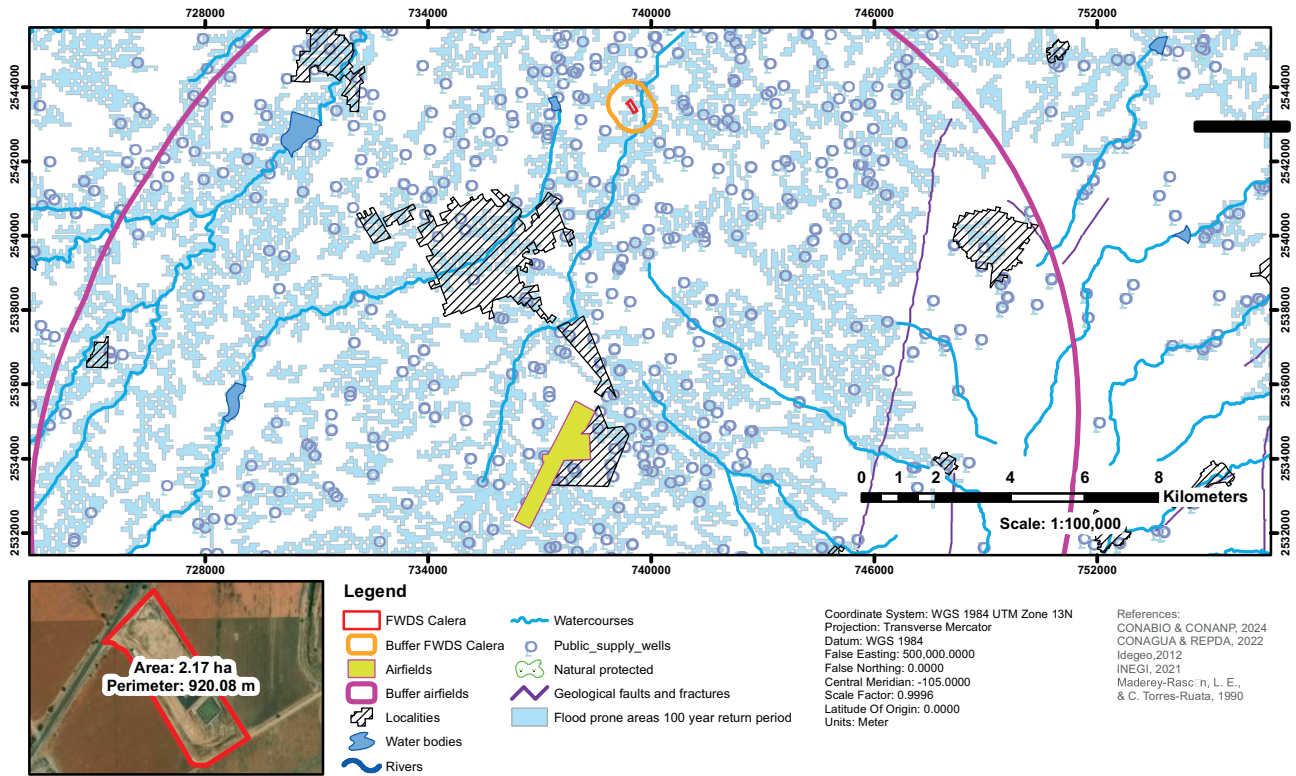


Fig. S5. Location restrictions map of the Calera final waste disposal site.

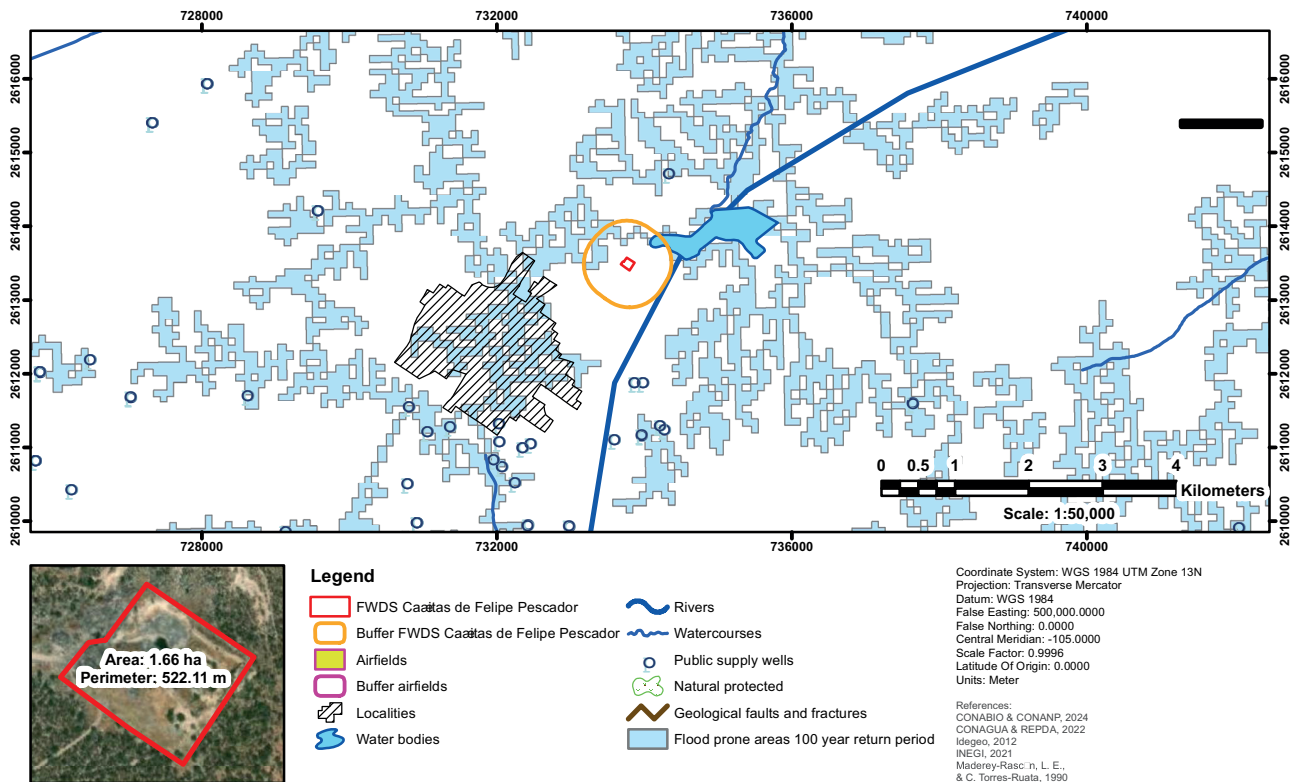


Fig. S6. Location restrictions map of the Cañitas de Felipe Pescador final waste disposal site.

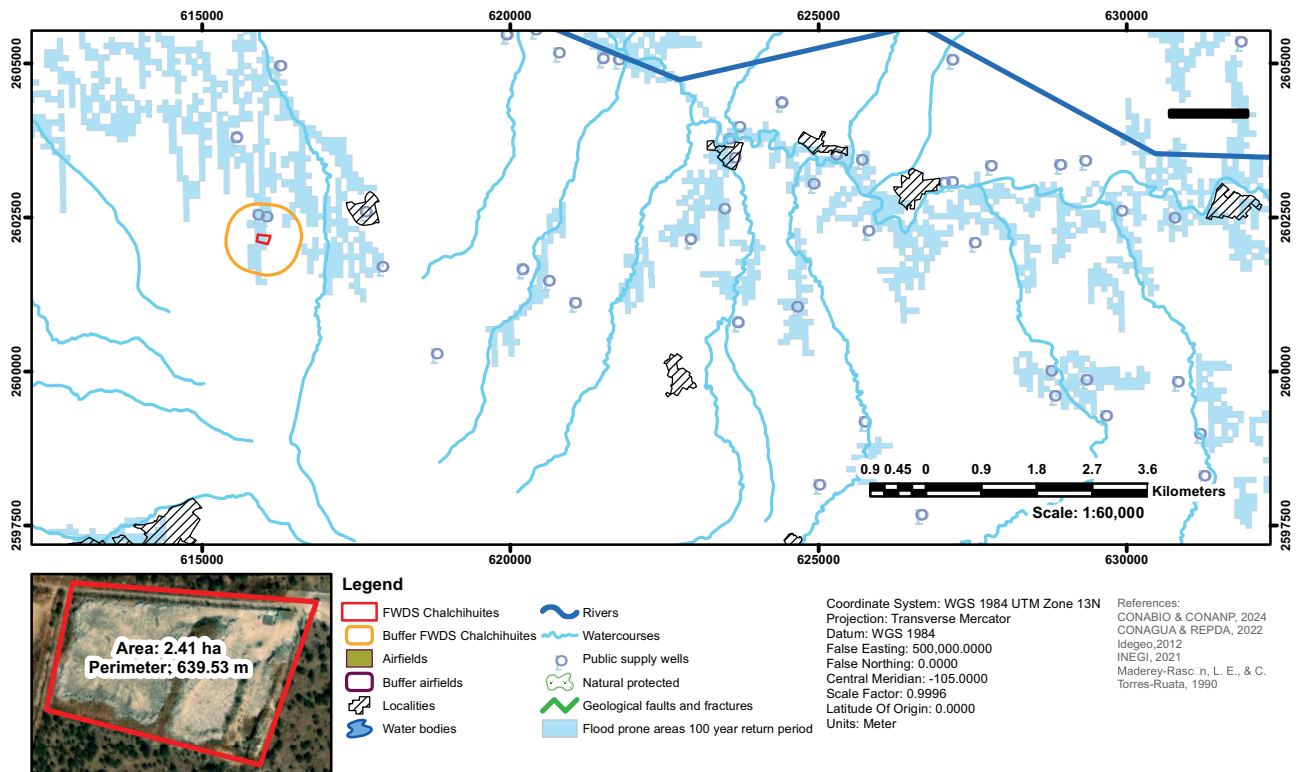


Fig. S7. Location restrictions map of the Chalchihuites final waste disposal site.

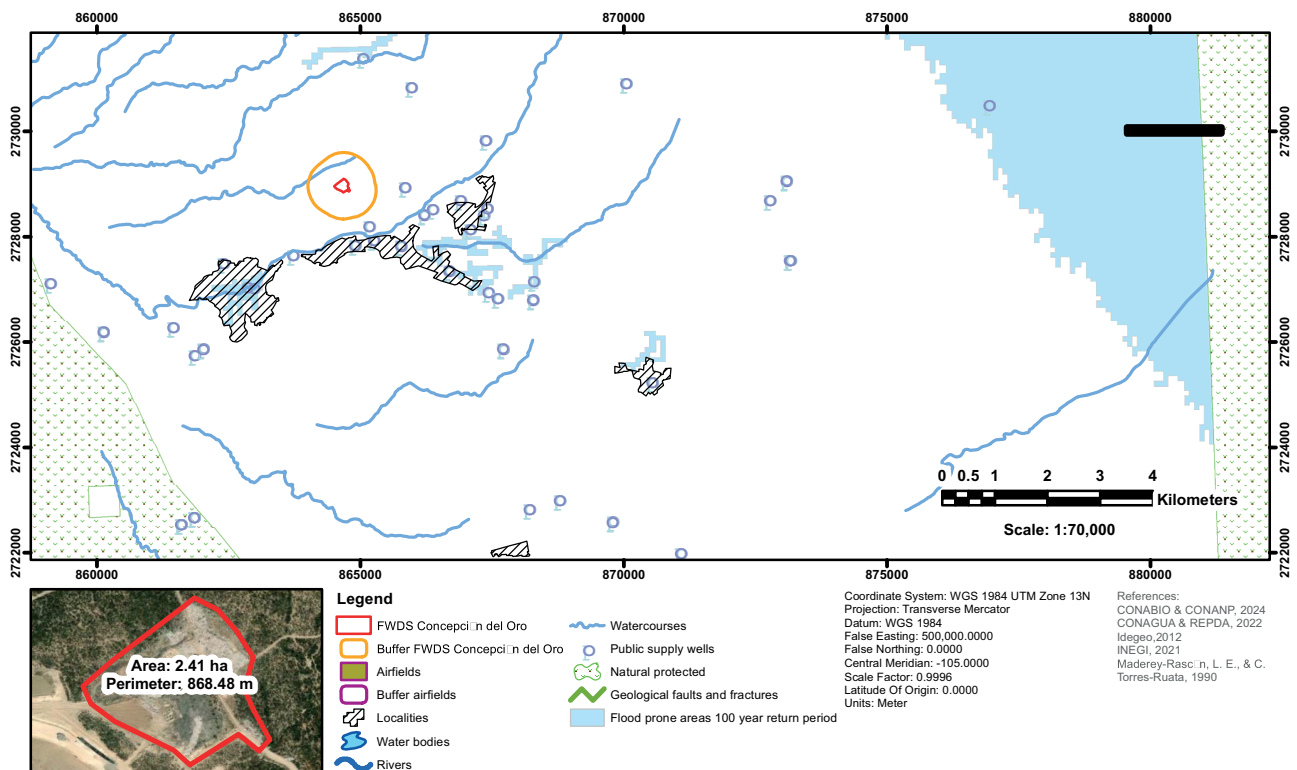


Fig. S8. Location restrictions map of the Concepción del Oro final waste disposal site.

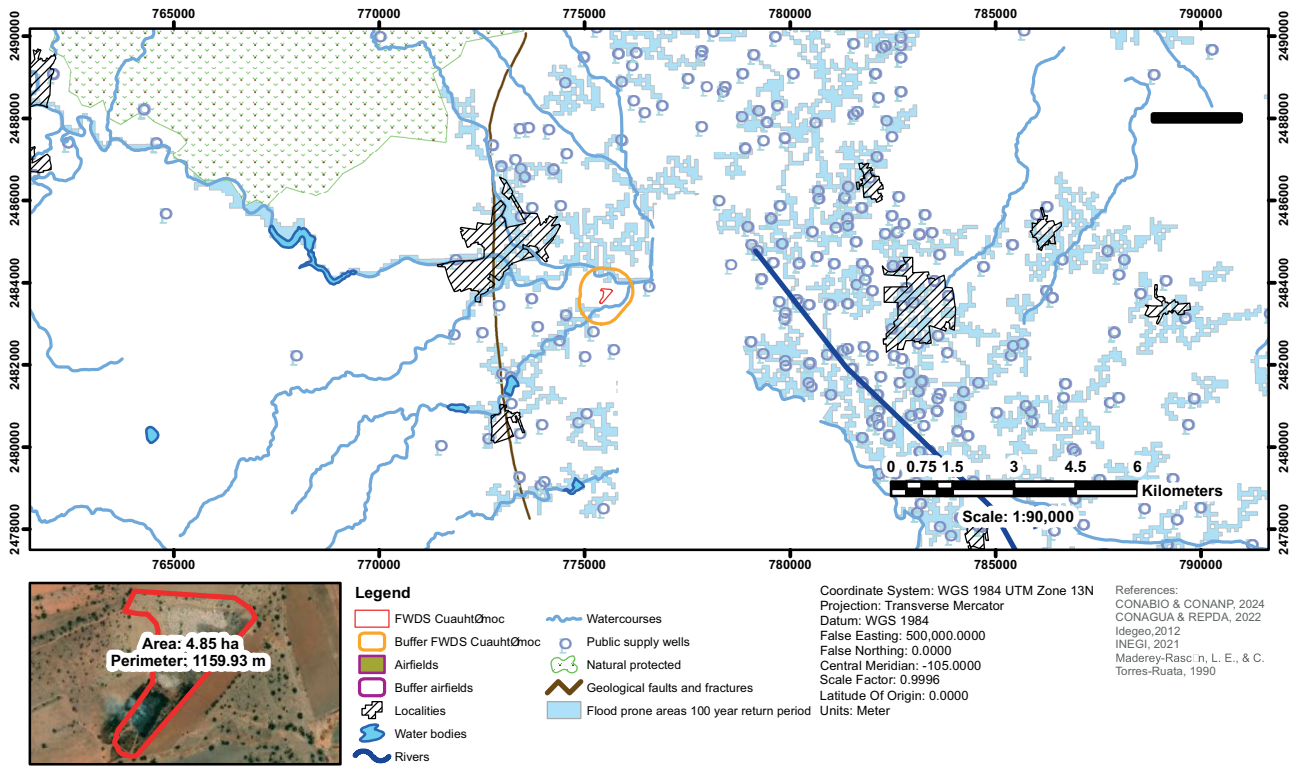


Fig. S9. Location restrictions map of the Cuahtémoc final waste disposal site.

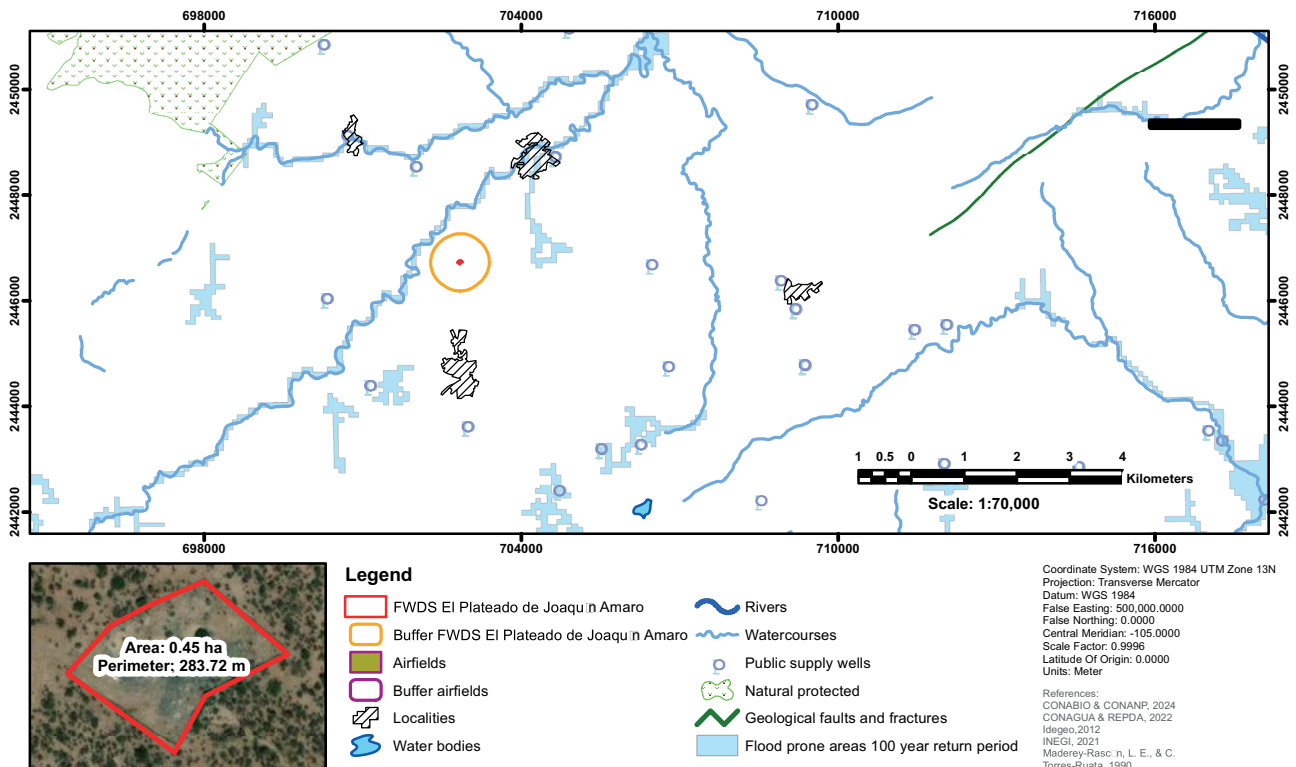


Fig. S10. Location restrictions map of the El Plateado de Joaquín Amaro final waste disposal site.

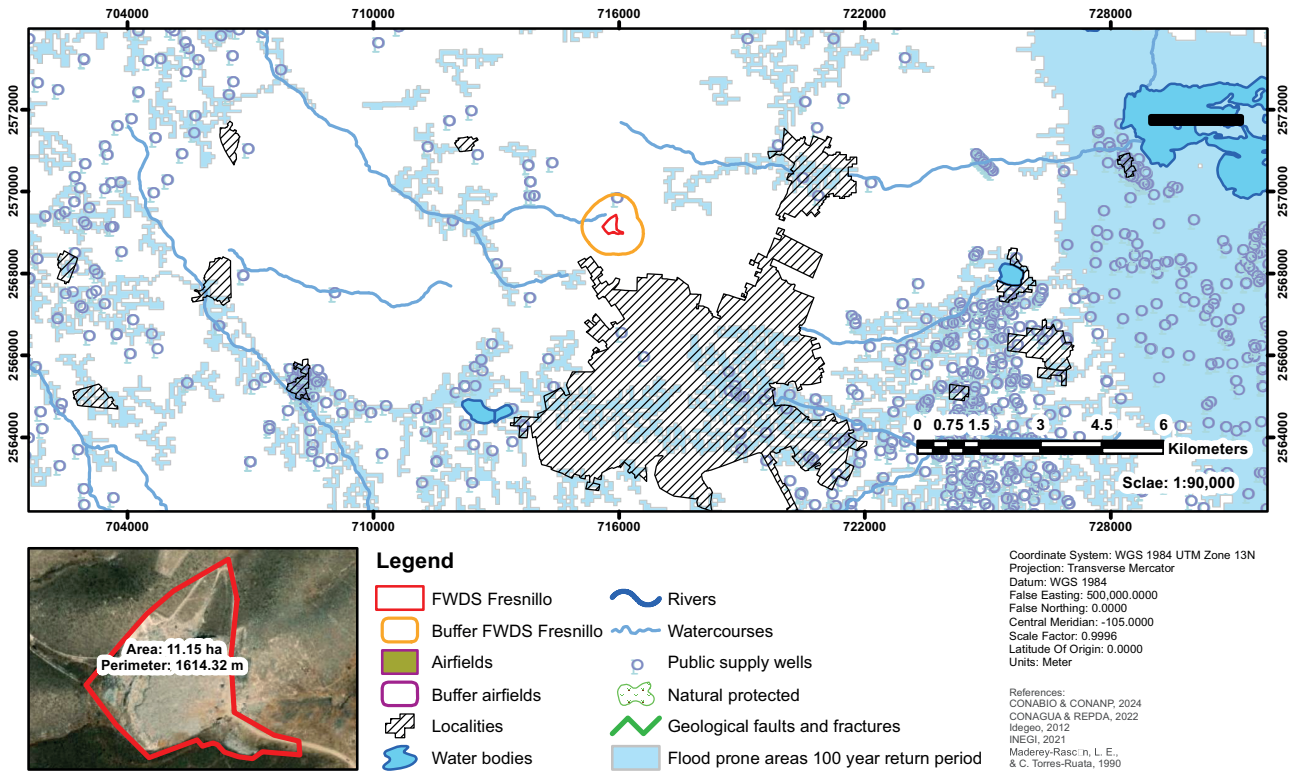


Fig. S11. Location restrictions map of the Fresnillo final waste disposal site.

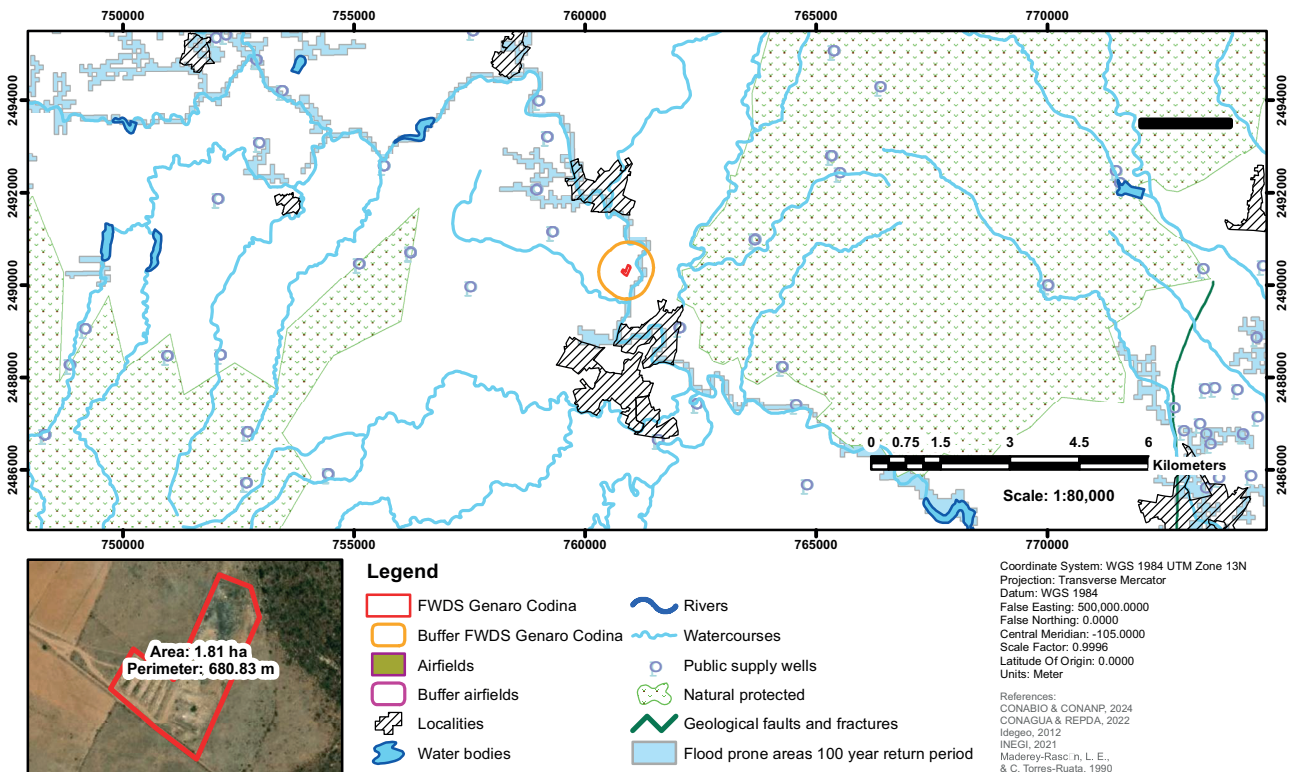


Fig. S12. Location restrictions map of the Genaro Codina final waste disposal site.

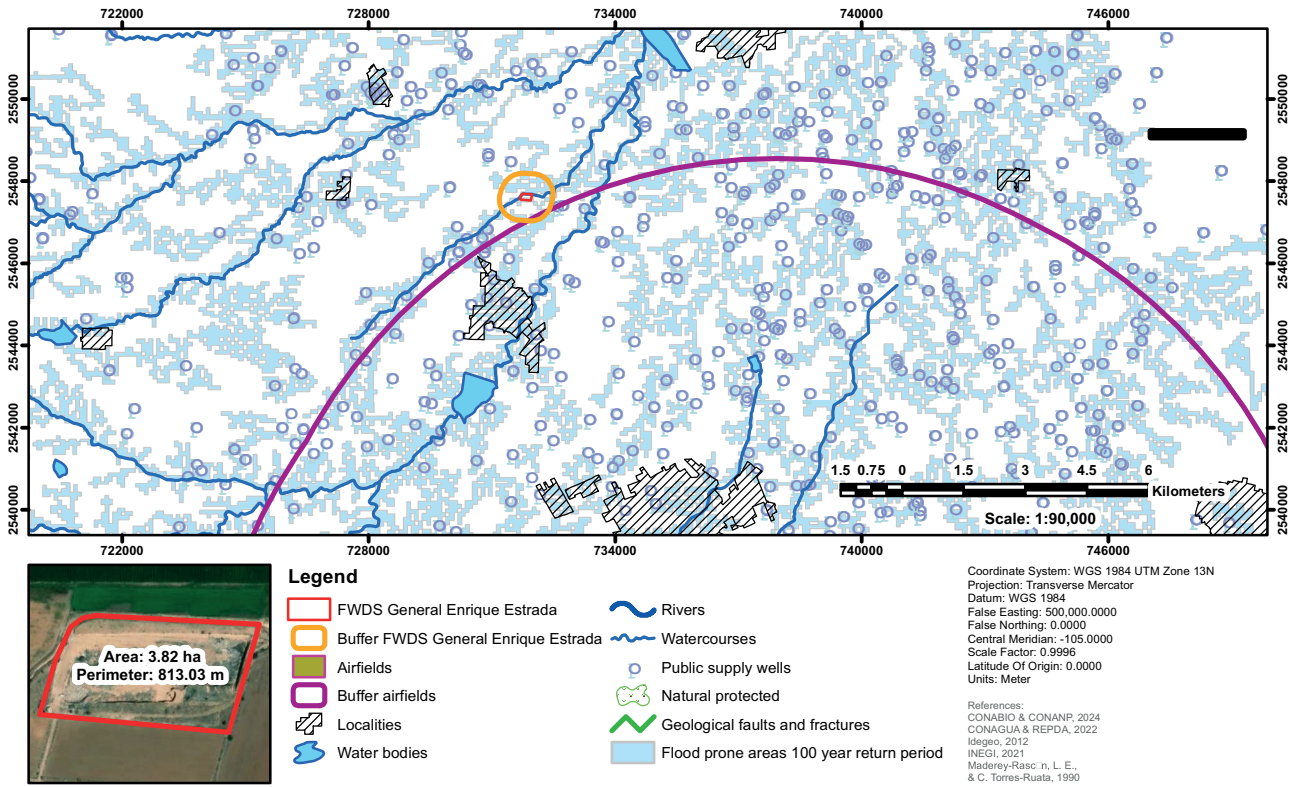


Fig. S13. Location restrictions map of the General Enrique Estrada final waste disposal site.

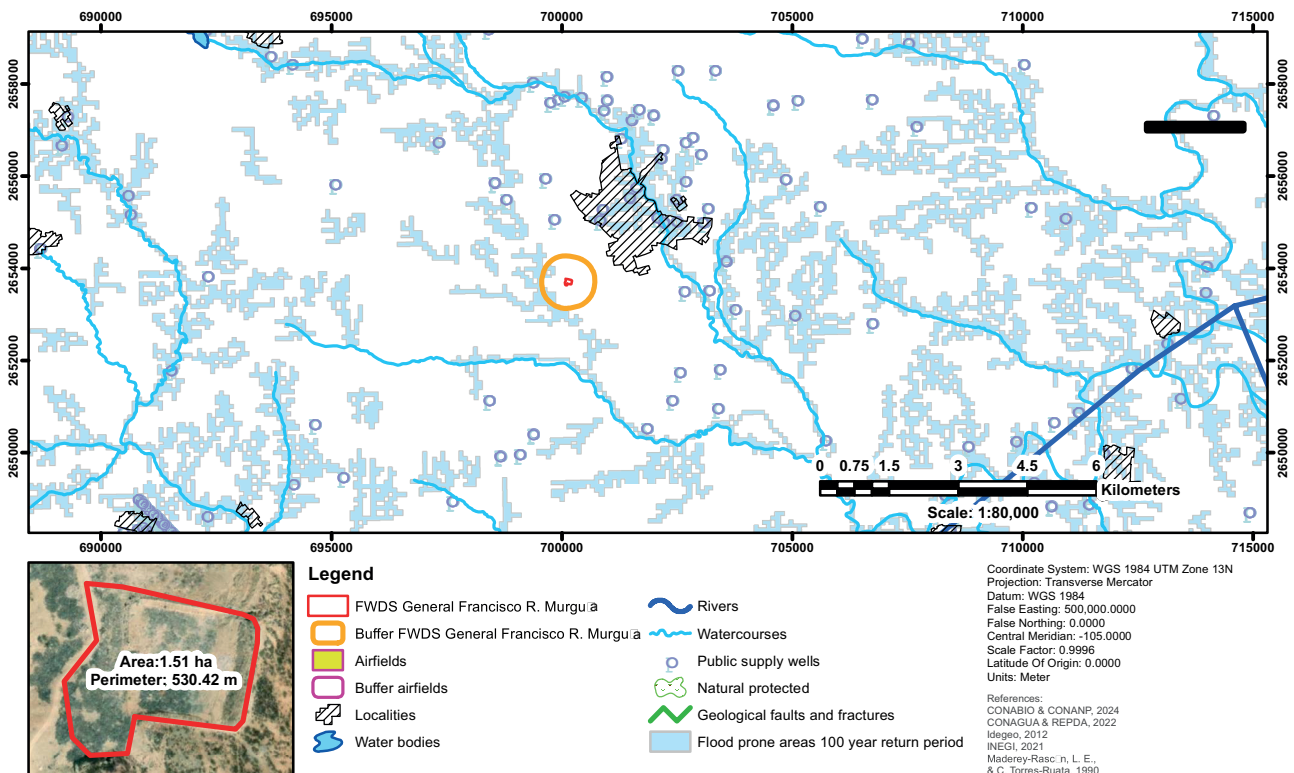


Fig. S14. Location restrictions map of the General Francisco R. Murguía final waste disposal site.

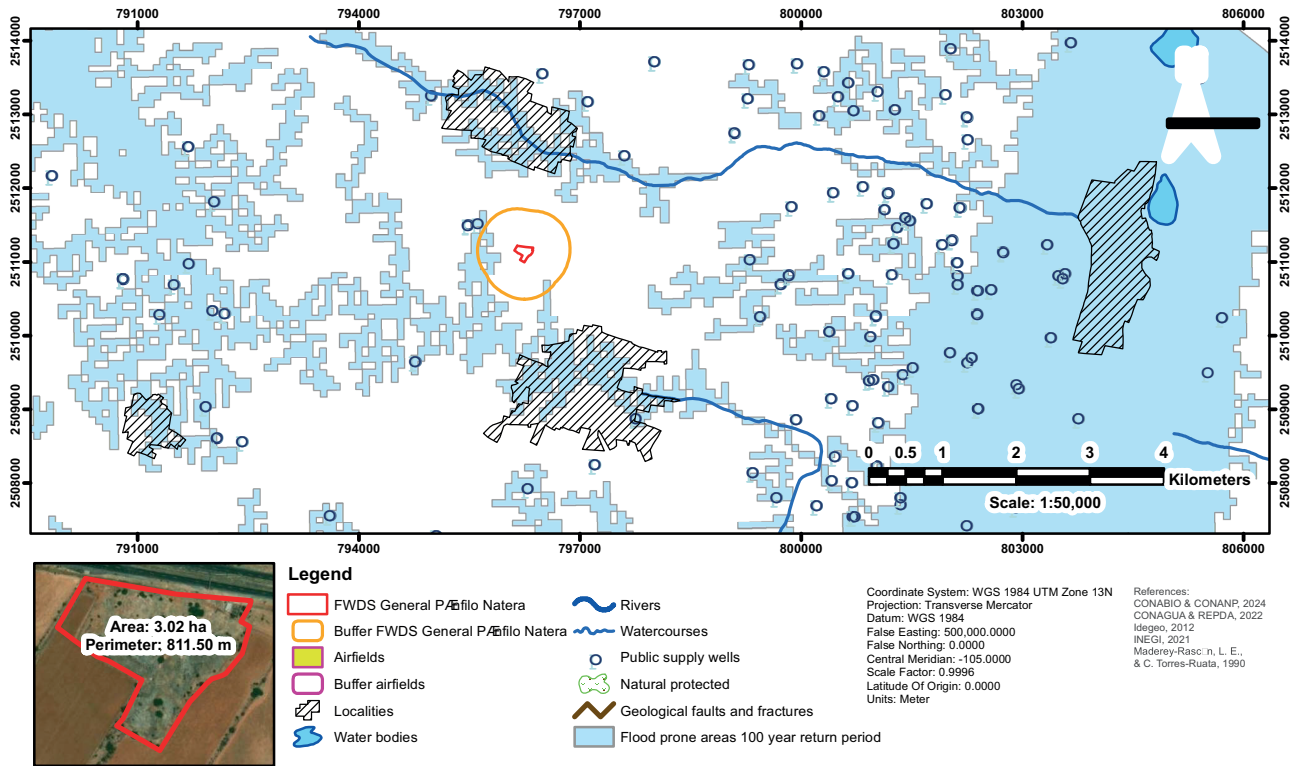


Fig. S15. Location restrictions map of the General Pánfilo Natera final waste disposal site.

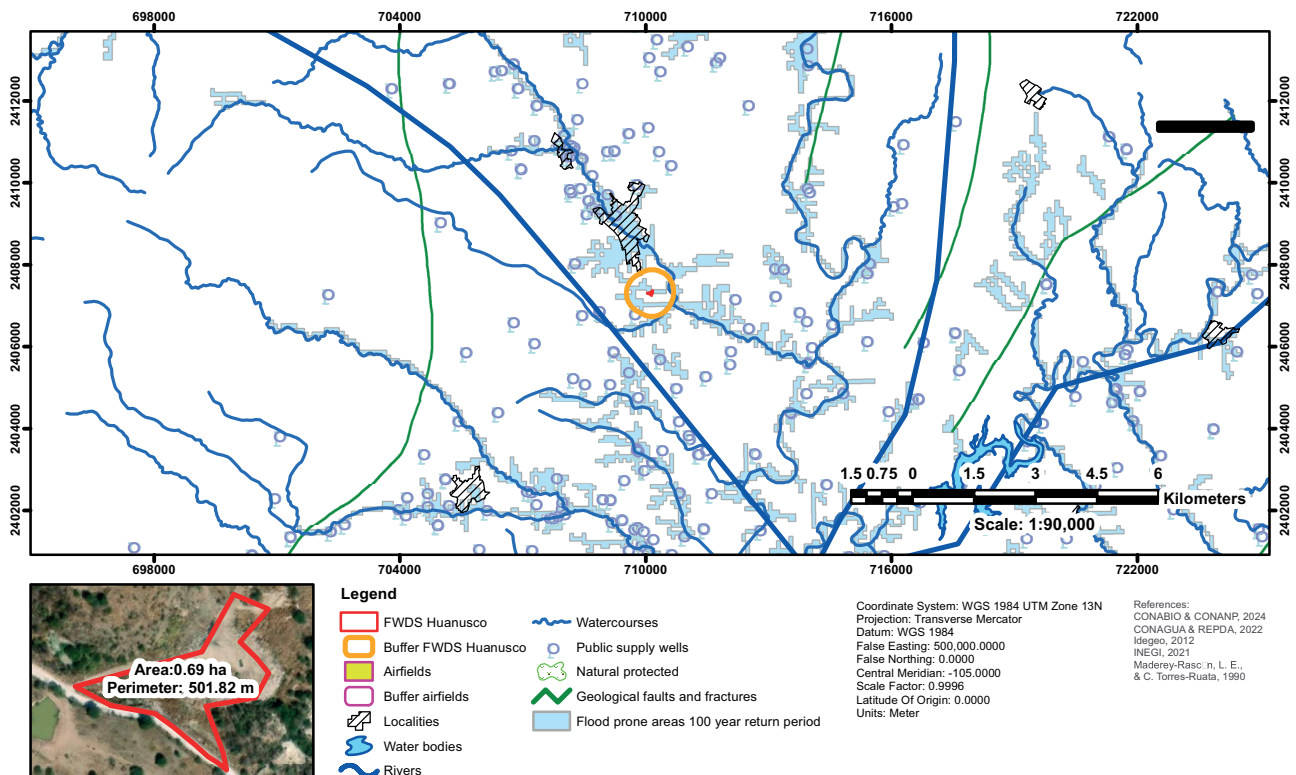


Fig. S16. Location restrictions map of the Huanusco final waste disposal site.

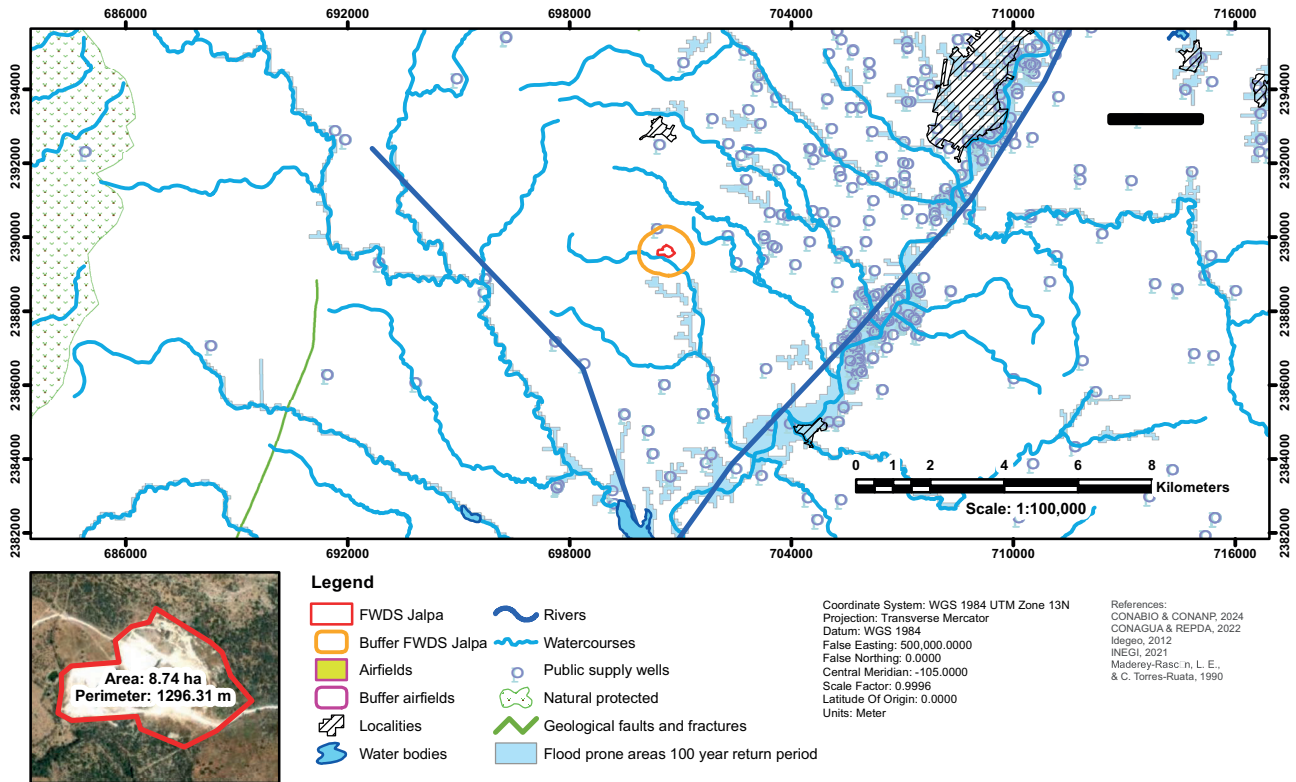


Fig. S17. Location restrictions map of the Jalpa final waste disposal site.

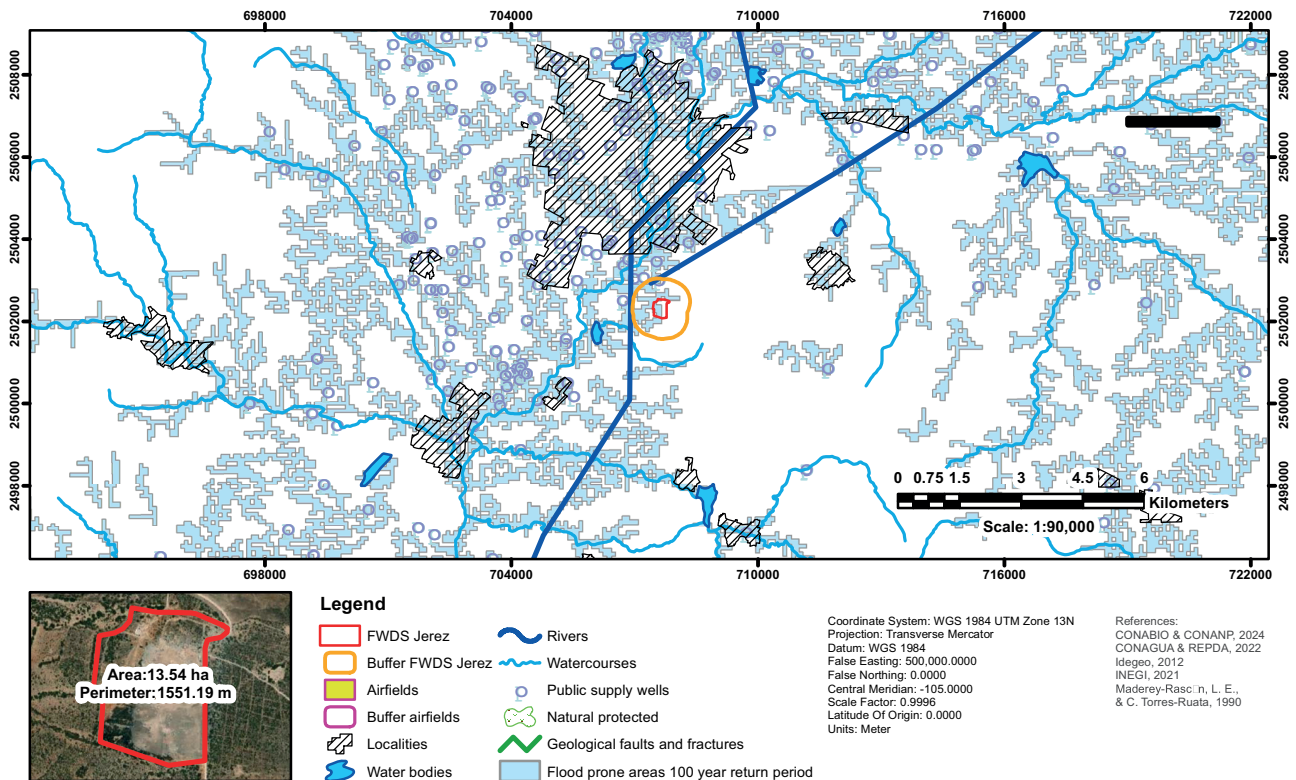


Fig. S18. Location restrictions map of the Jerez final waste disposal site.

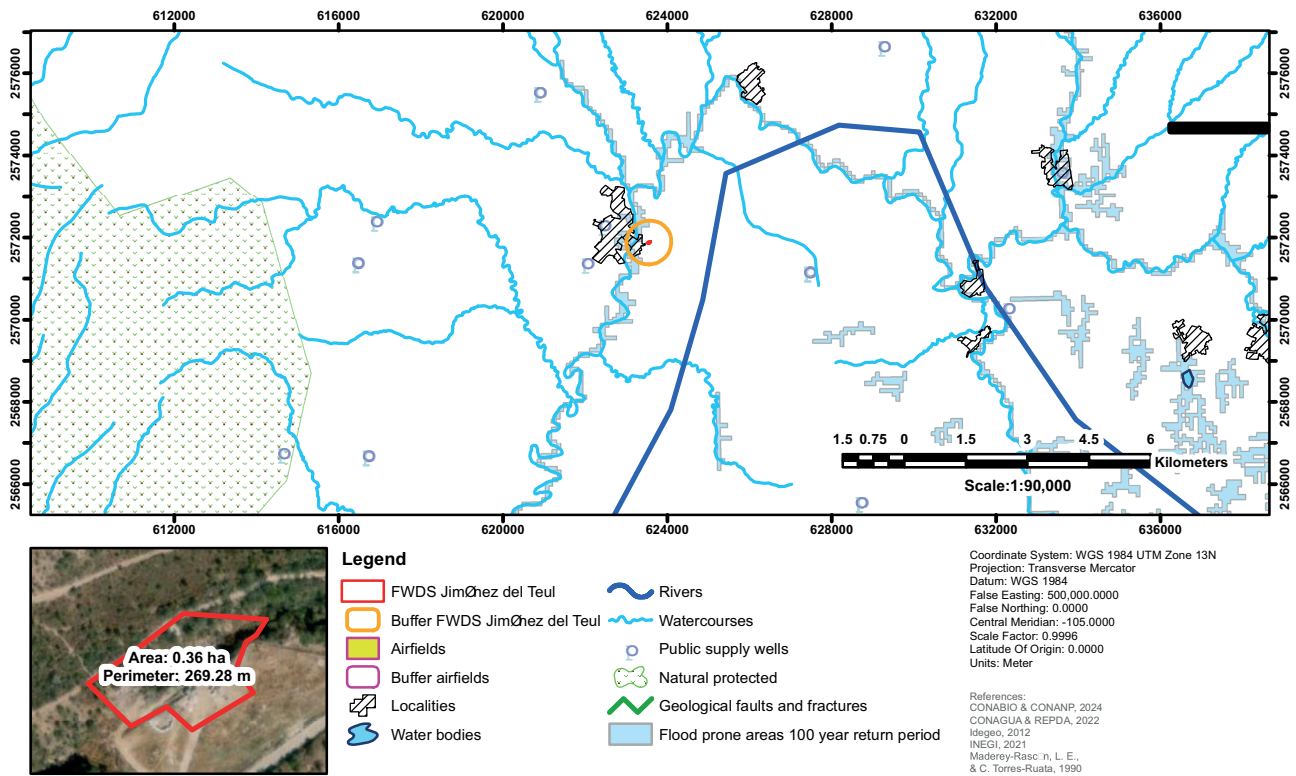


Fig. S19. Location restrictions map of the Jiménez del Teul final waste disposal site.

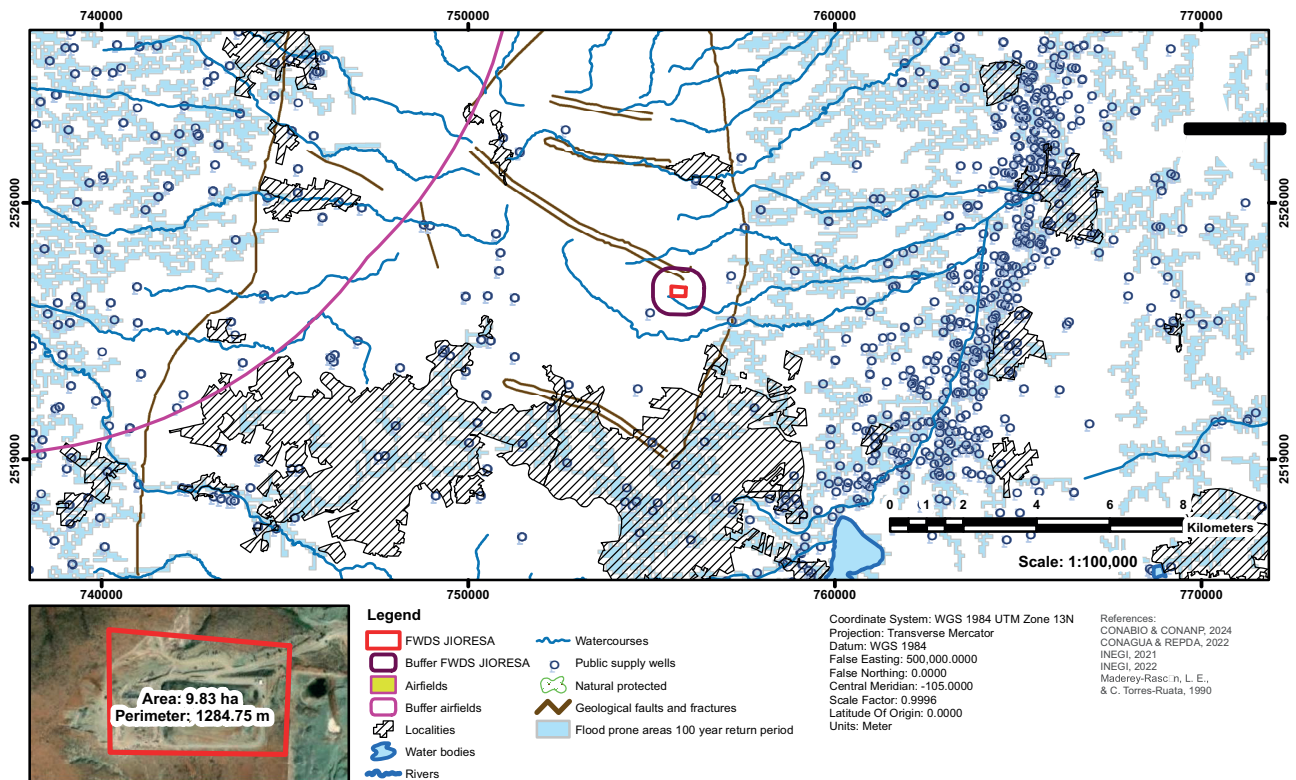


Fig. S20. Location restrictions map of the the final waste disposal site of Guadalupe, Morelos, Trancoso, Vetagranda, and Zacatecas (JIORESA).

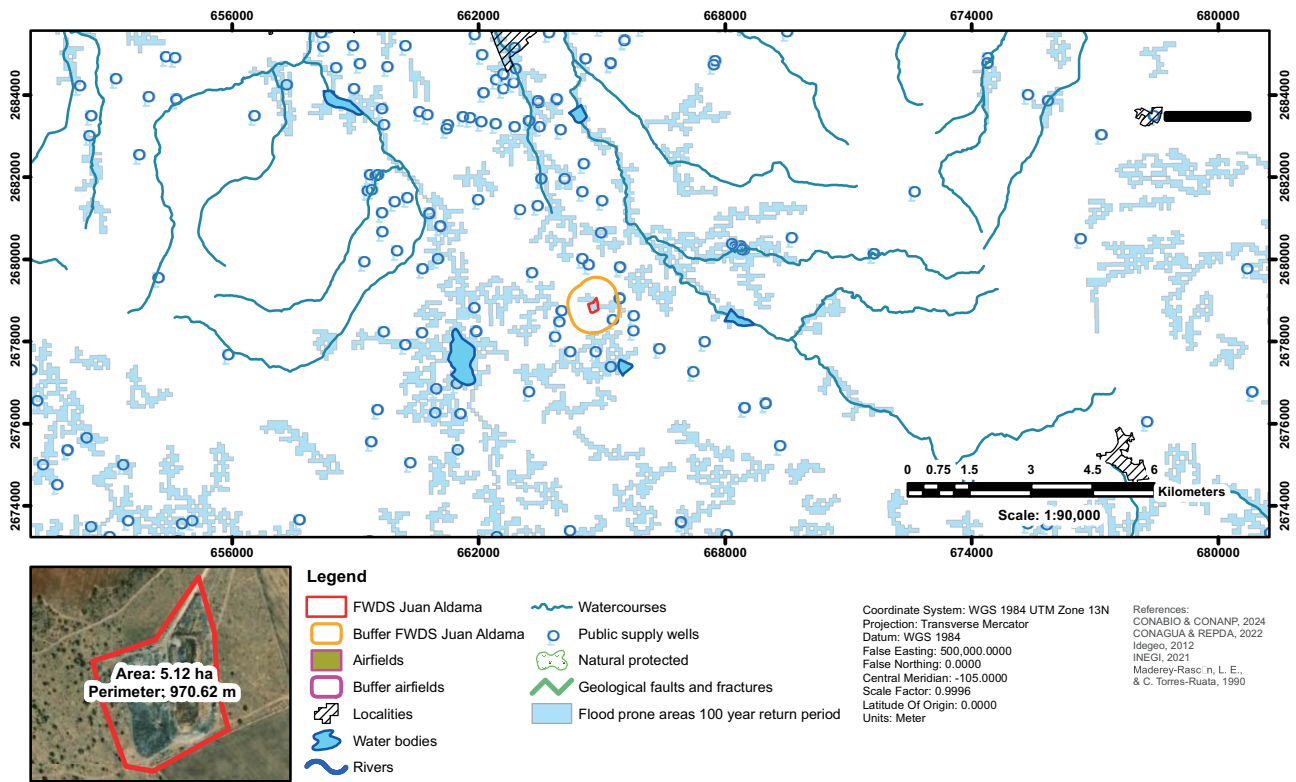


Fig.S21. Location restrictions map of the Juan Aldama final waste disposal site.

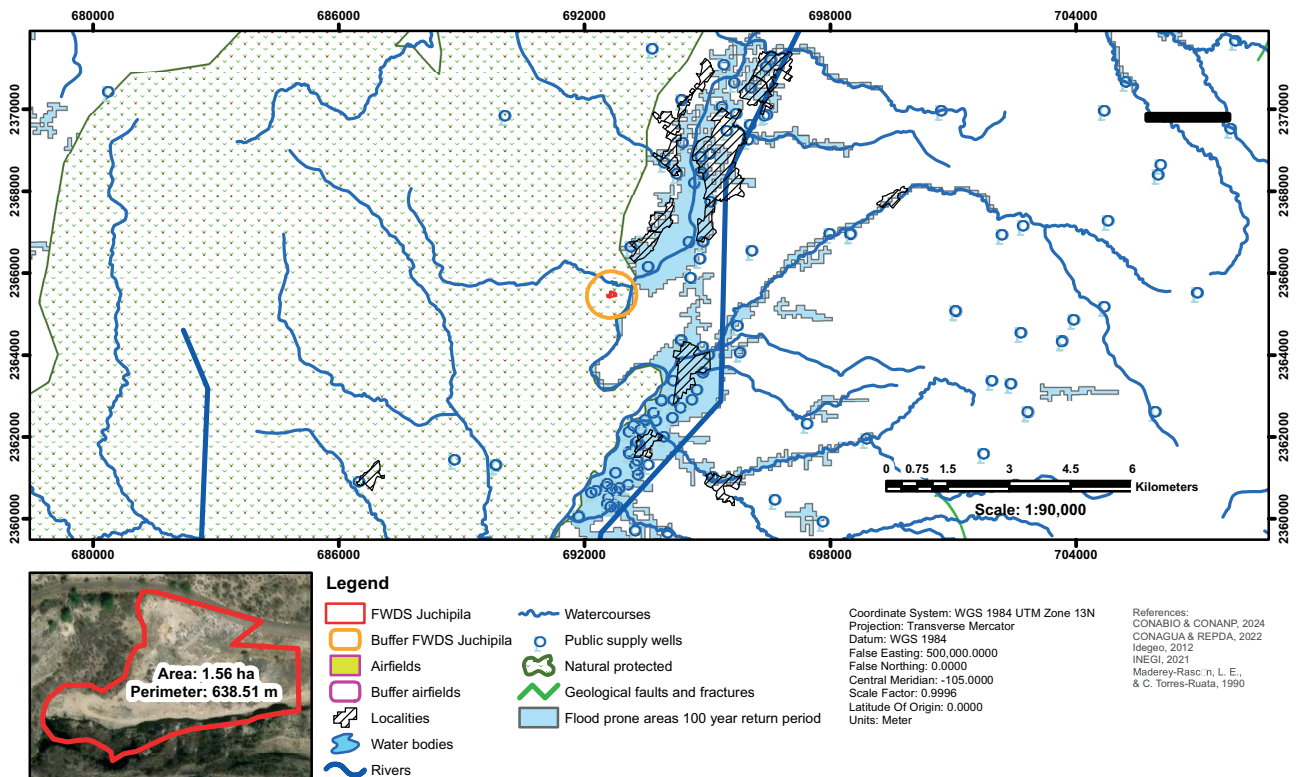


Fig. S22. Location restrictions map of the Juchipila final waste disposal site.

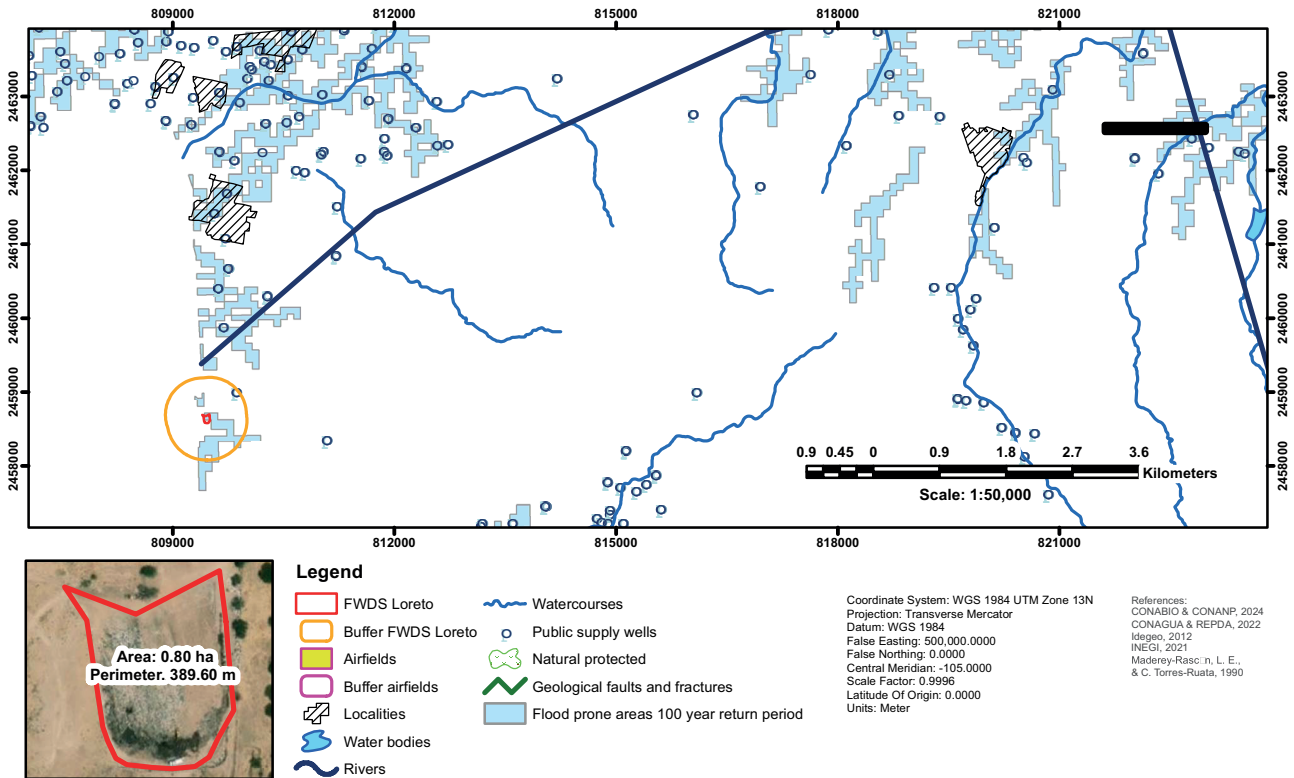


Fig. S23. Location restrictions map of the Loreto final waste disposal site.

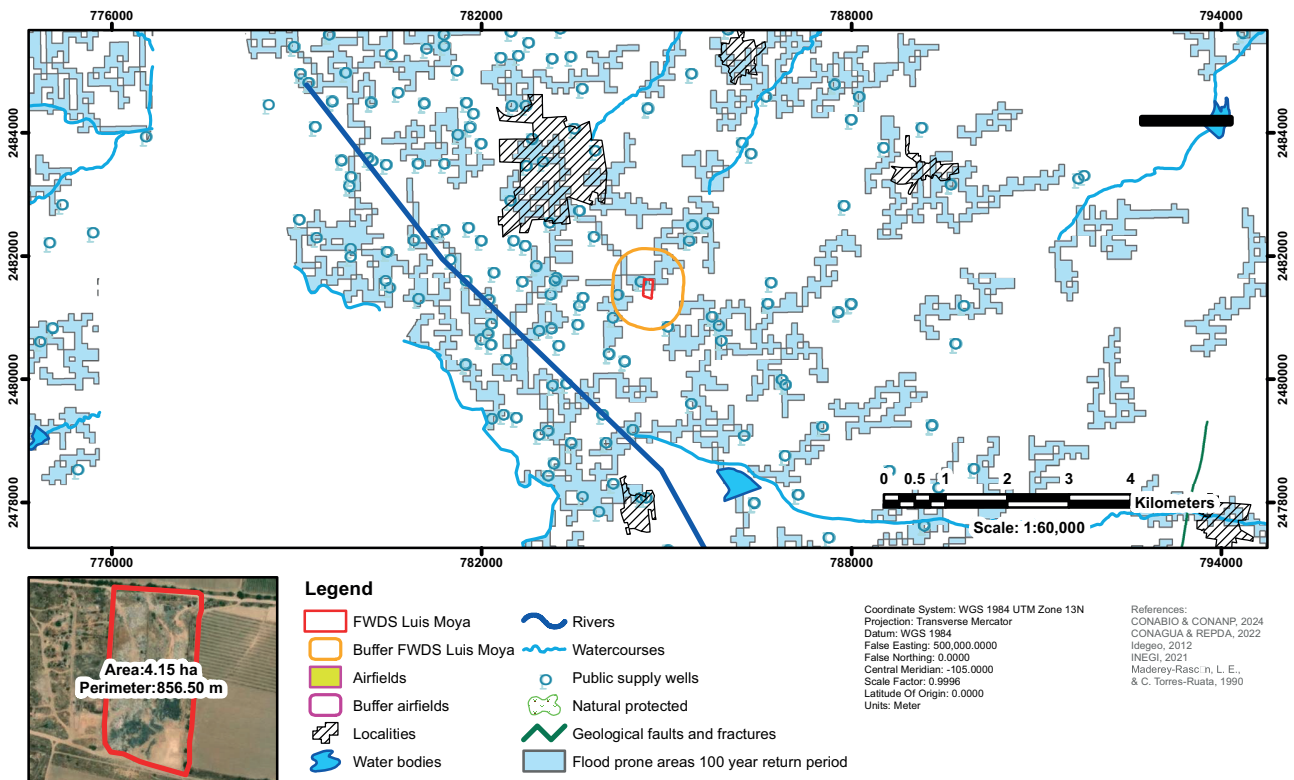


Fig. S24. Location restrictions map of the Luis Moya final waste disposal site.

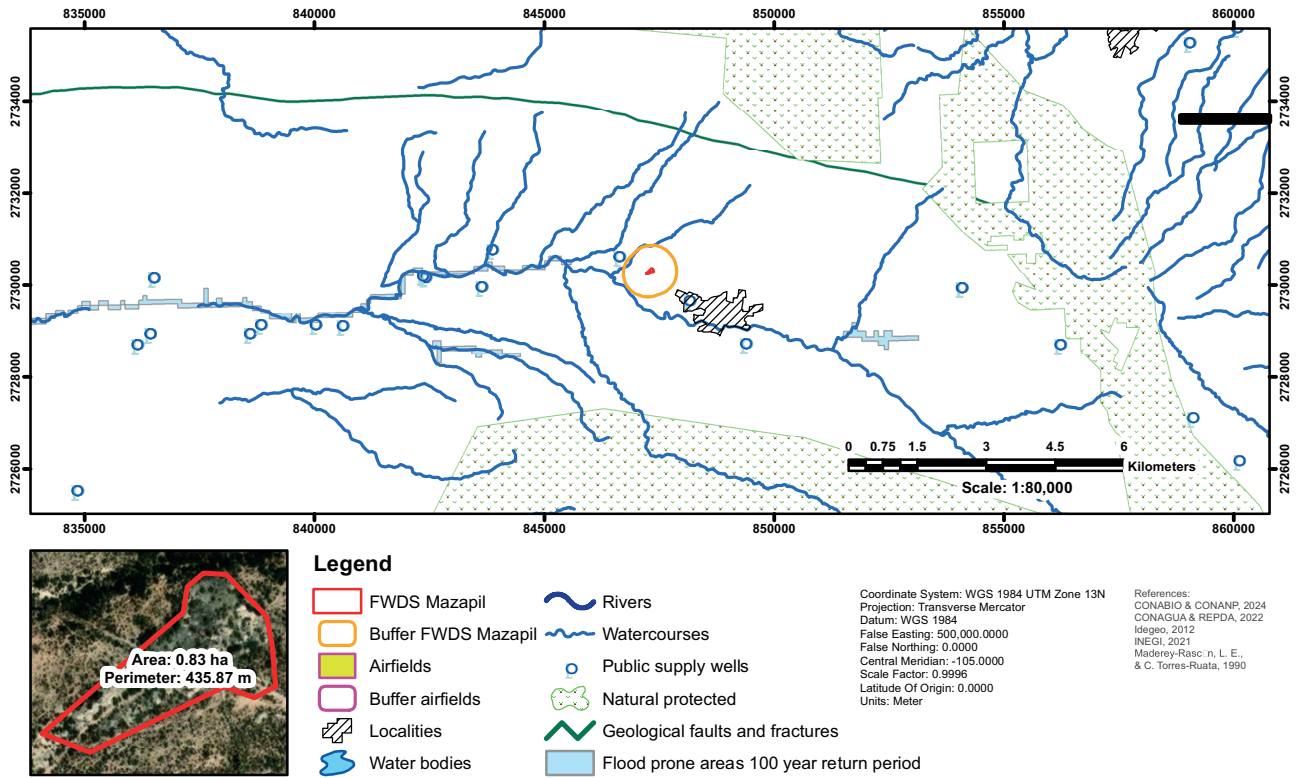


Fig. S25. Location restrictions map of the Mazapil final waste disposal site.

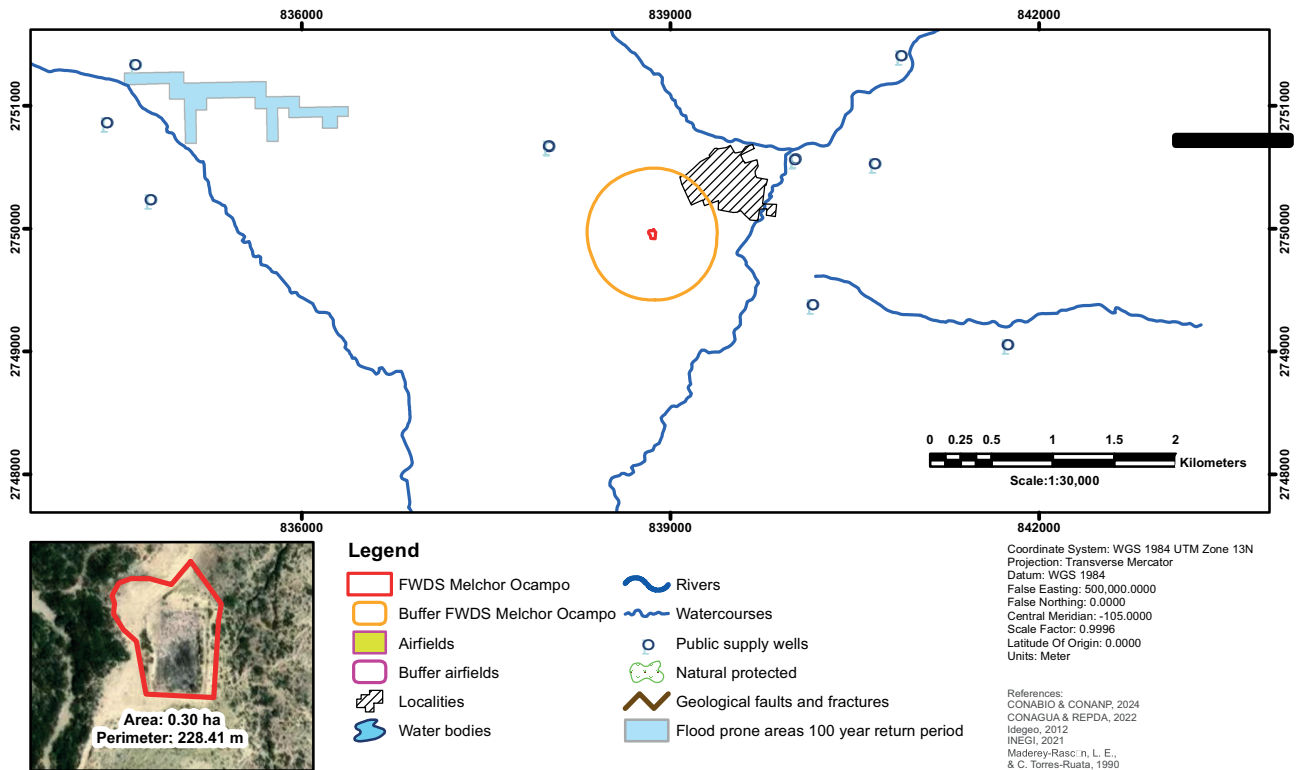


Fig. S26. Location restrictions map of the Melchor Ocampo final waste disposal site.

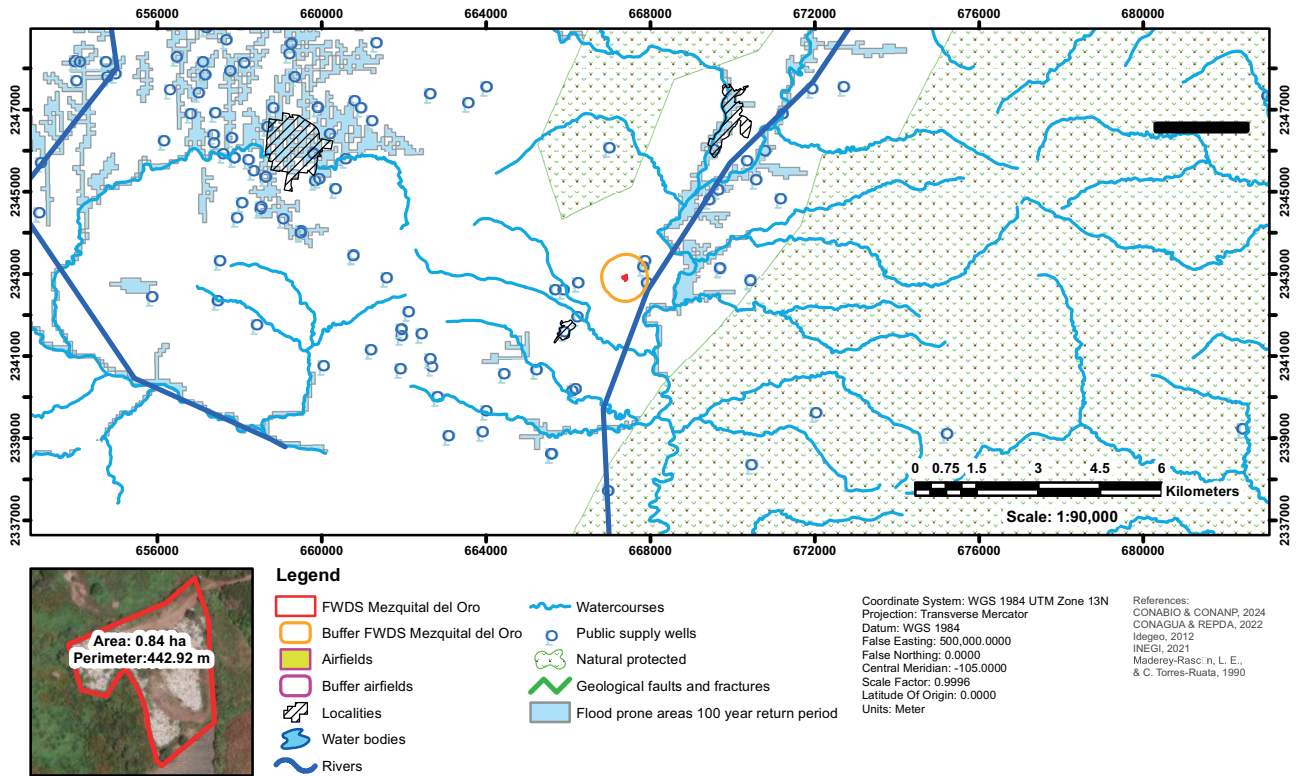


Fig. S27. Location restrictions map of the Mezquital del Oro final waste disposal site.

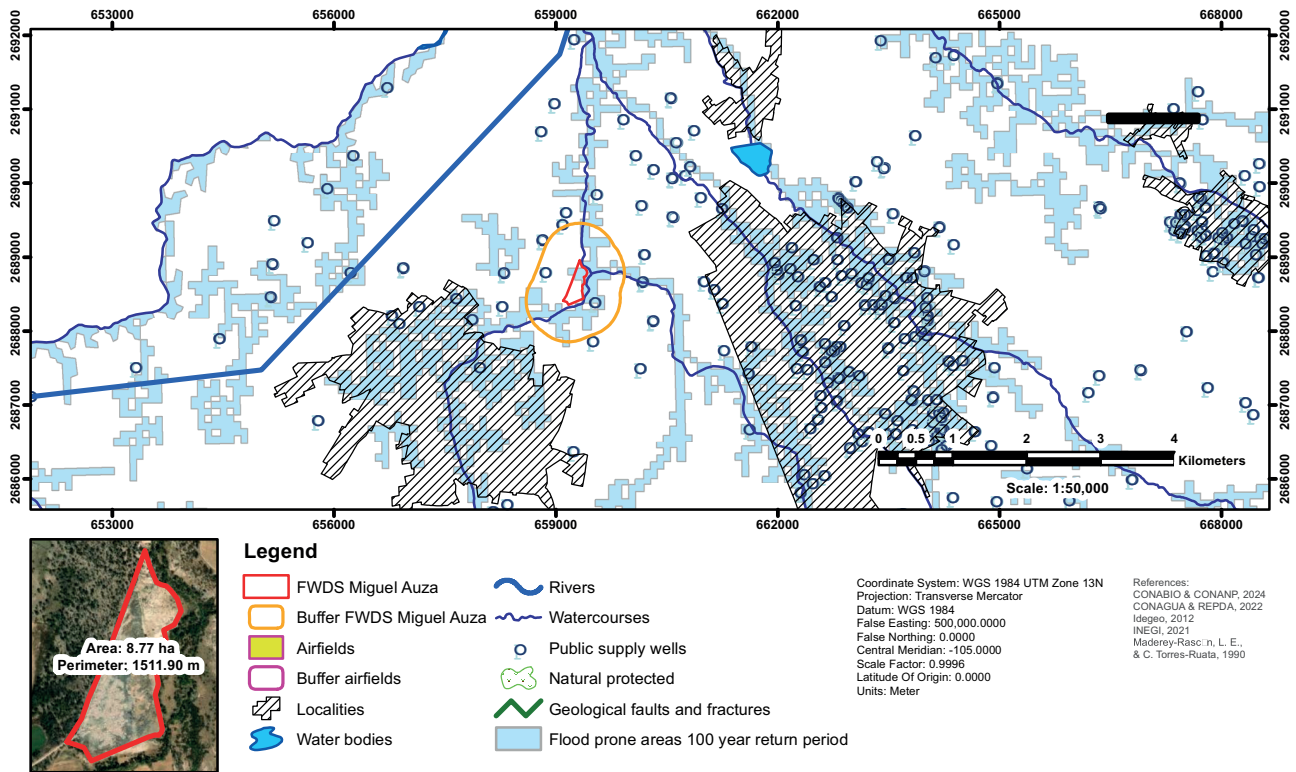


Fig. S28. Location restrictions map of the Miguel Auza final waste disposal site.

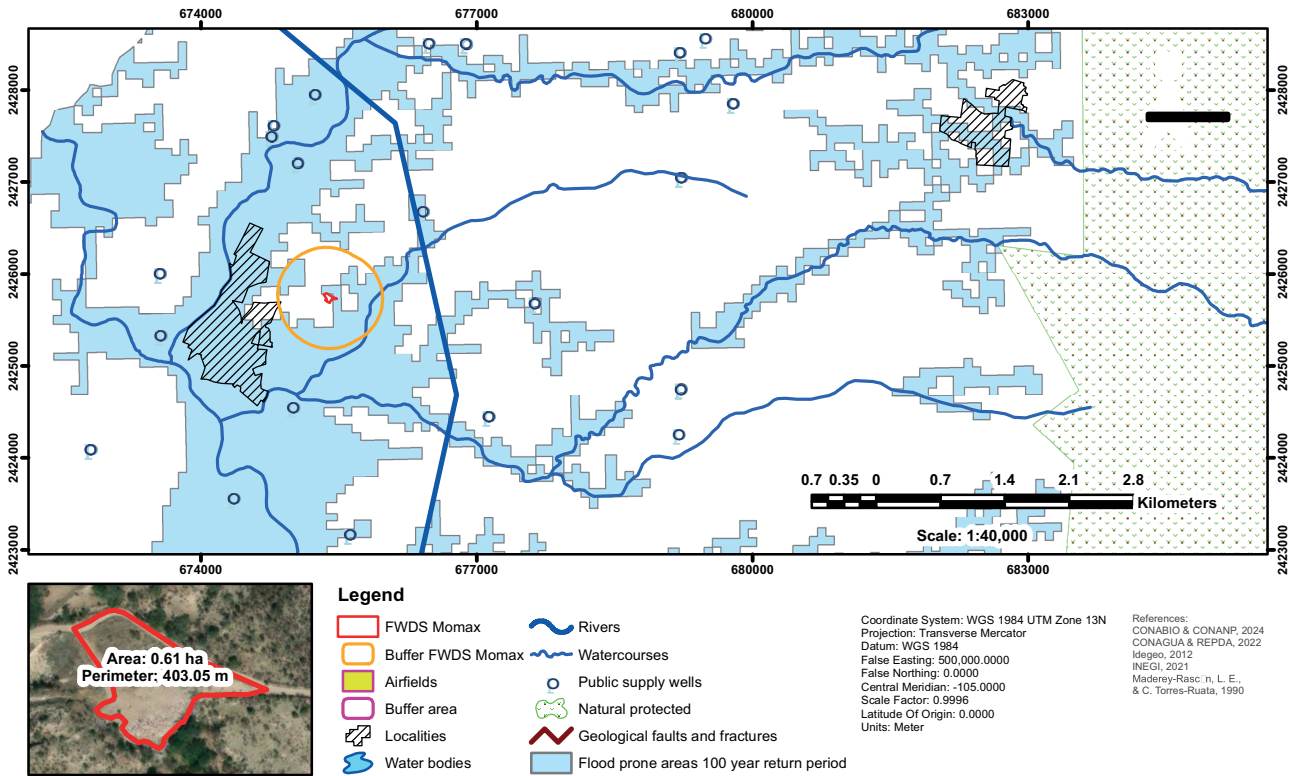


Fig. S29. Location restrictions map of the Momax final waste disposal site.

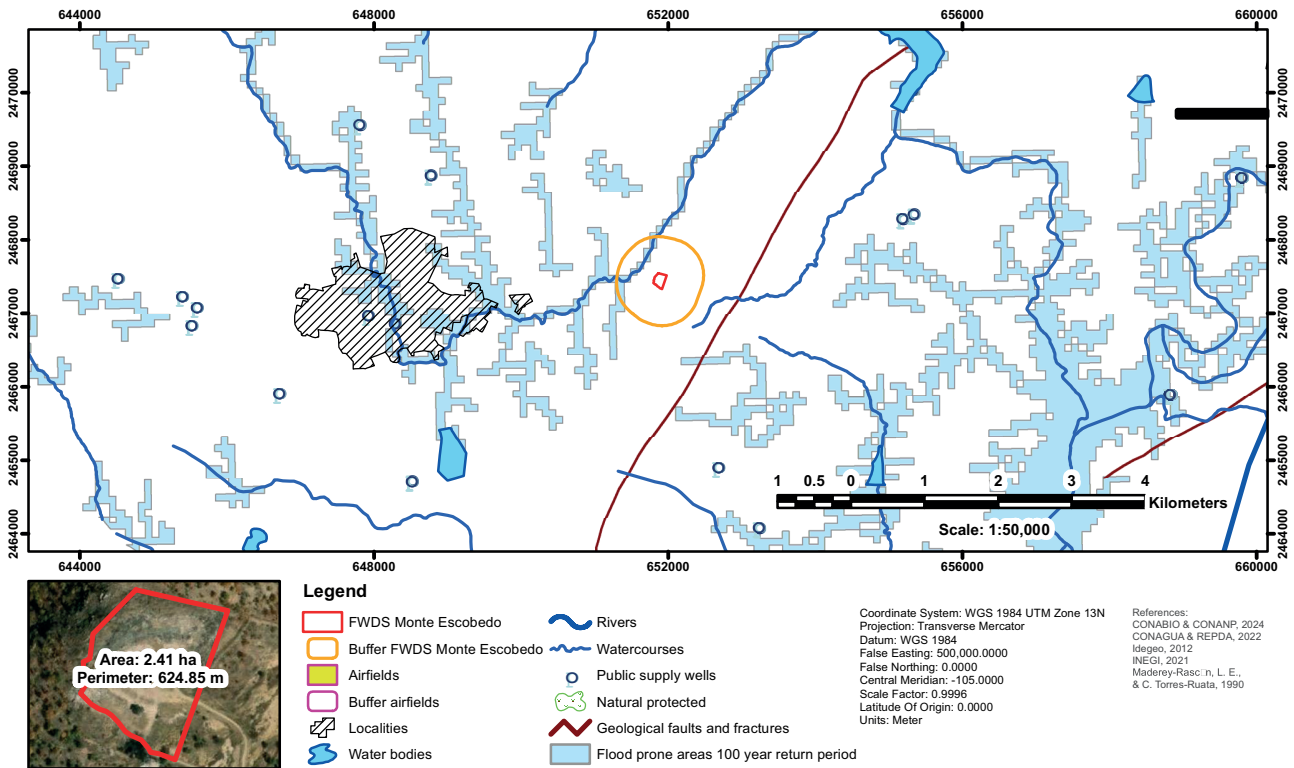


Fig. S30. Location restrictions map of the Monte Escobedo final waste disposal site.

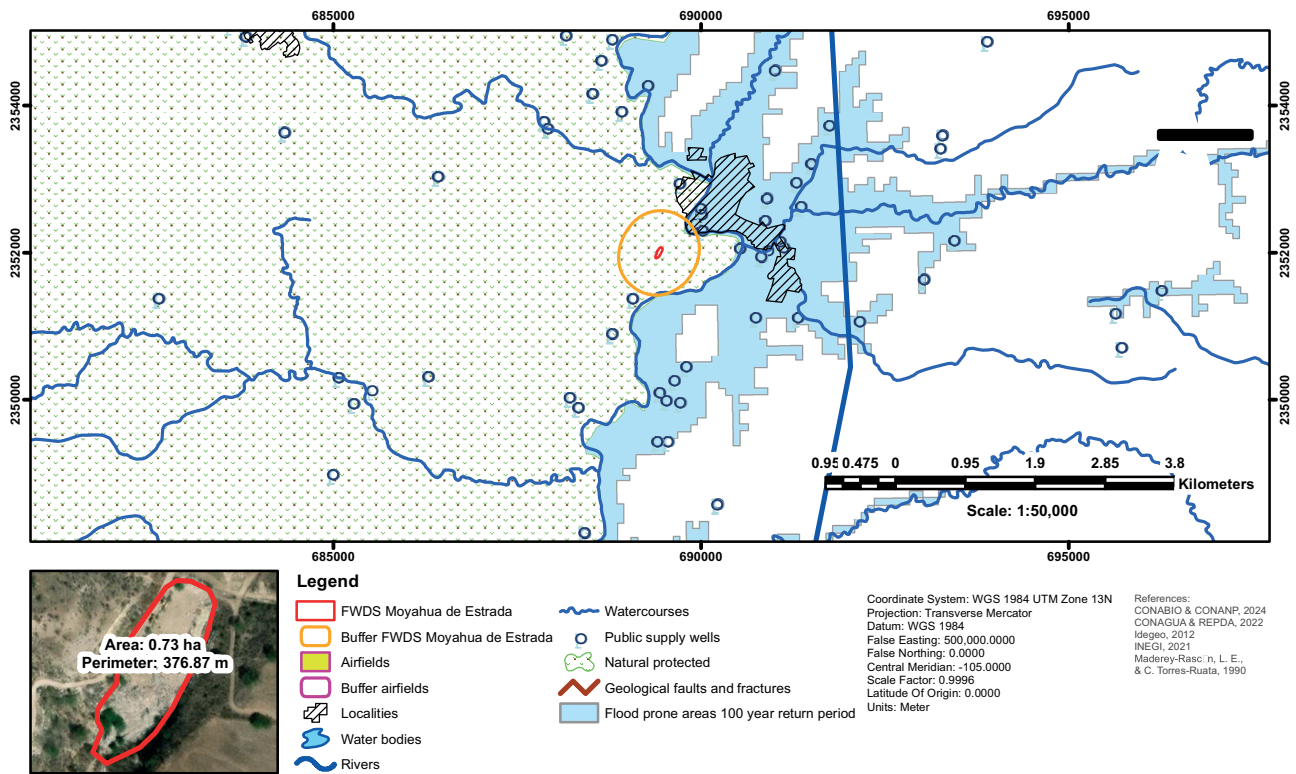


Fig. S31. Location restrictions map of the Moyahua de Estrada final waste disposal site.

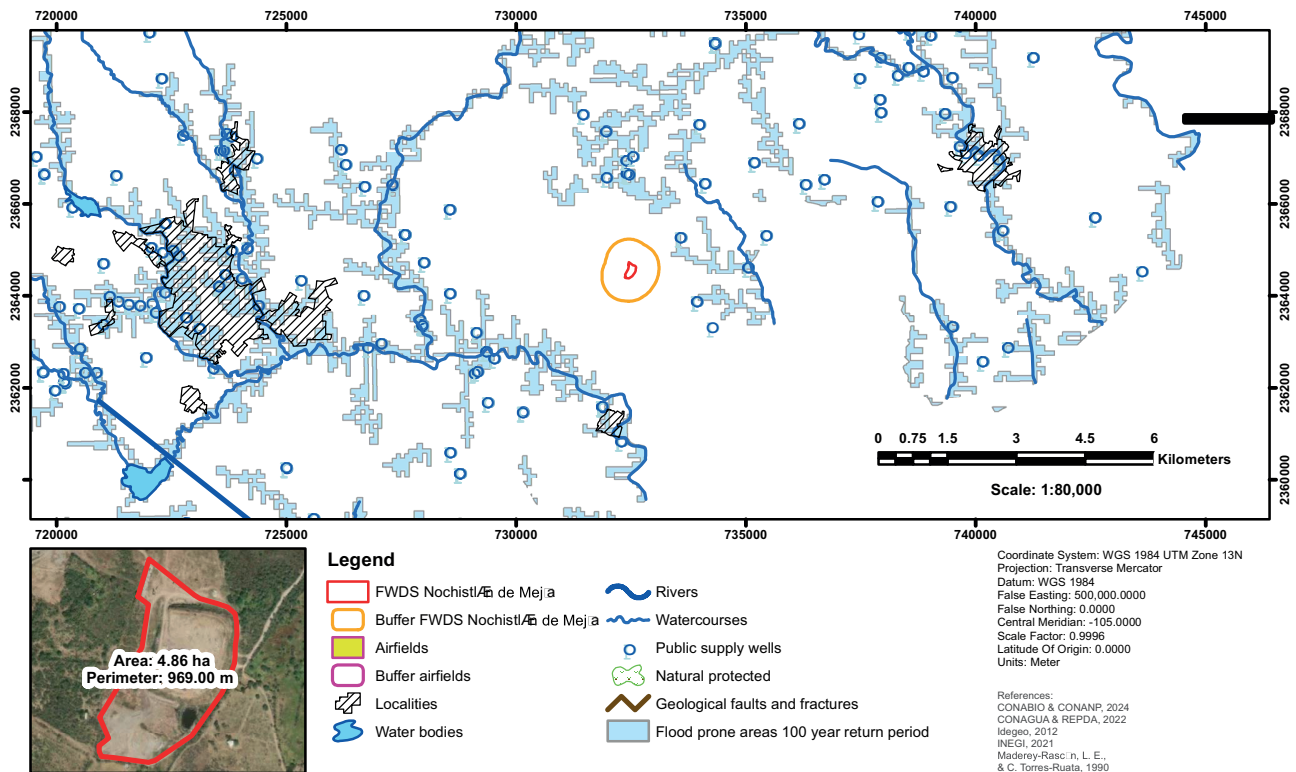


Fig. S32. Location restrictions map of the Nochistlán de Mejía final waste disposal site.

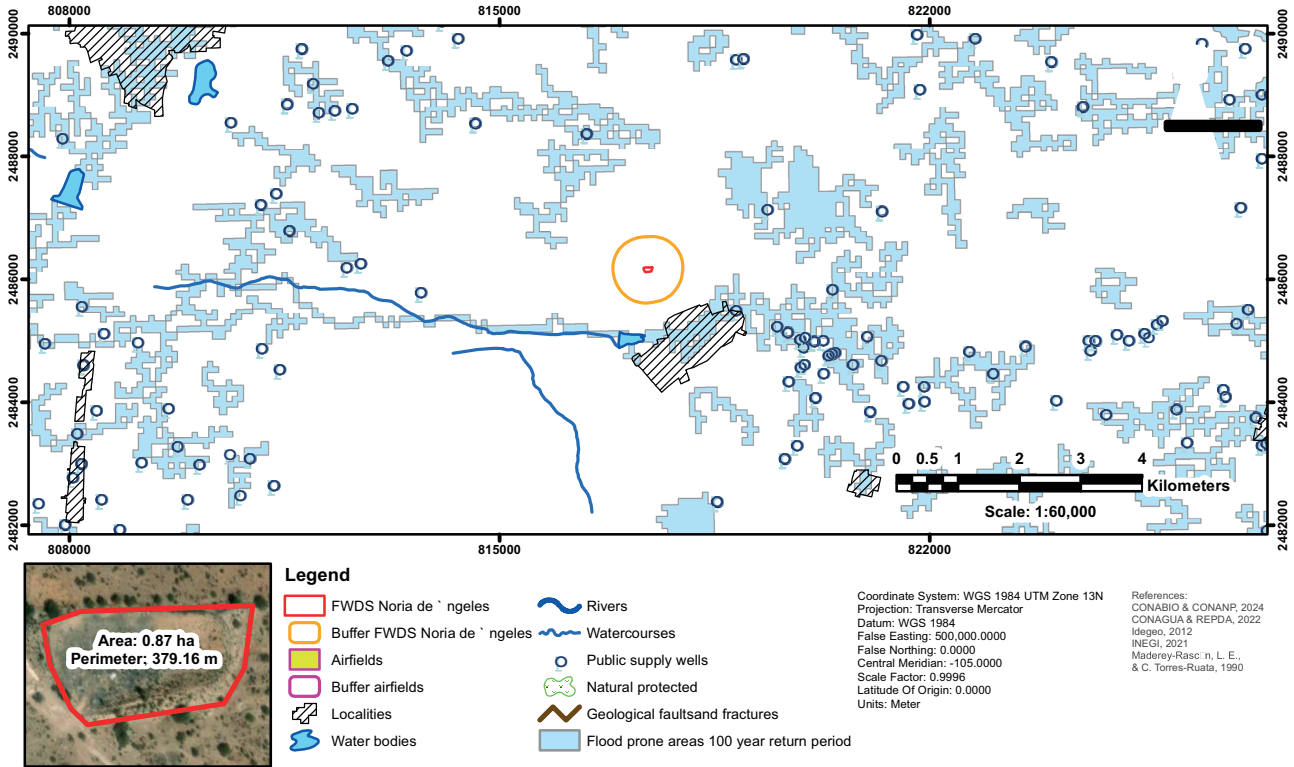


Fig. S33. Location restrictions map of the Noria de Angeles final waste disposal site.

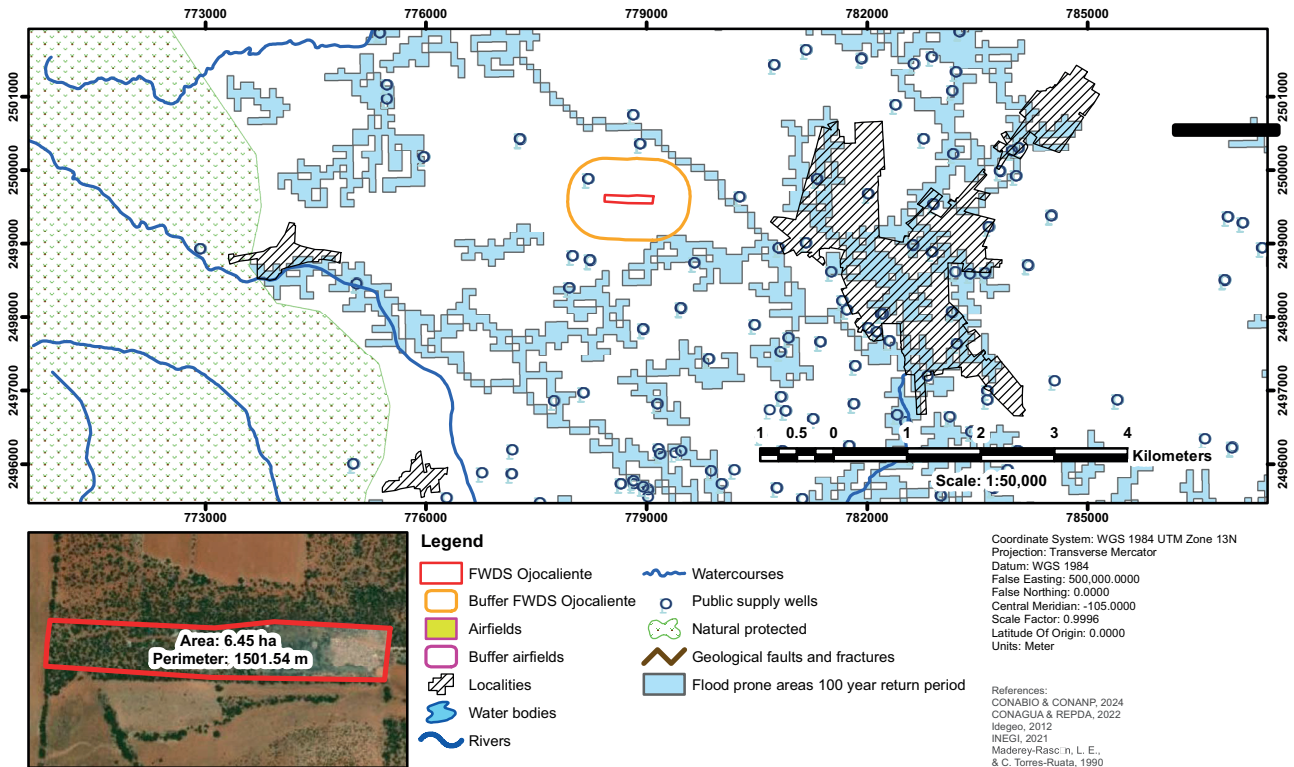


Fig. S34. Location restrictions map of the Ojocaliente final waste disposal site.

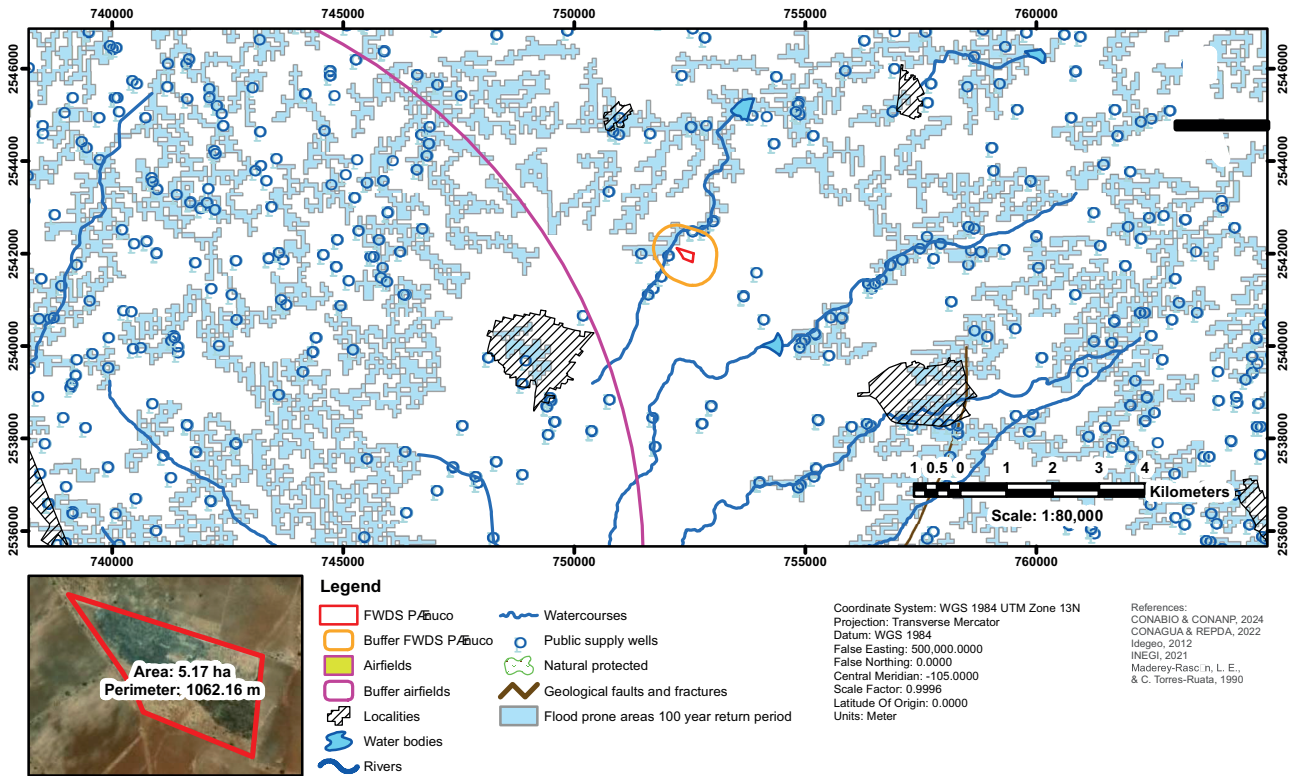


Fig. S35. Location restrictions map of the Pánuco final waste disposal site.

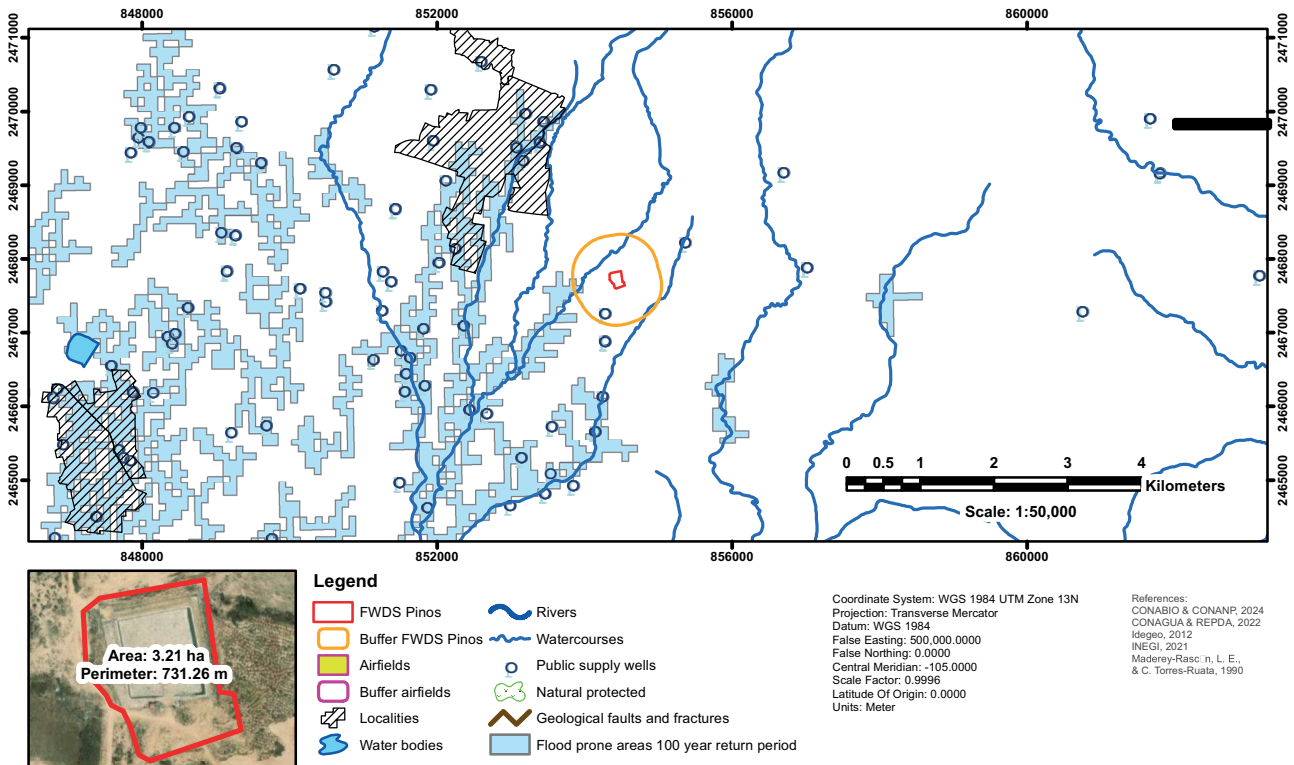


Fig. S36. Location restrictions map of the Pinos final waste disposal site.

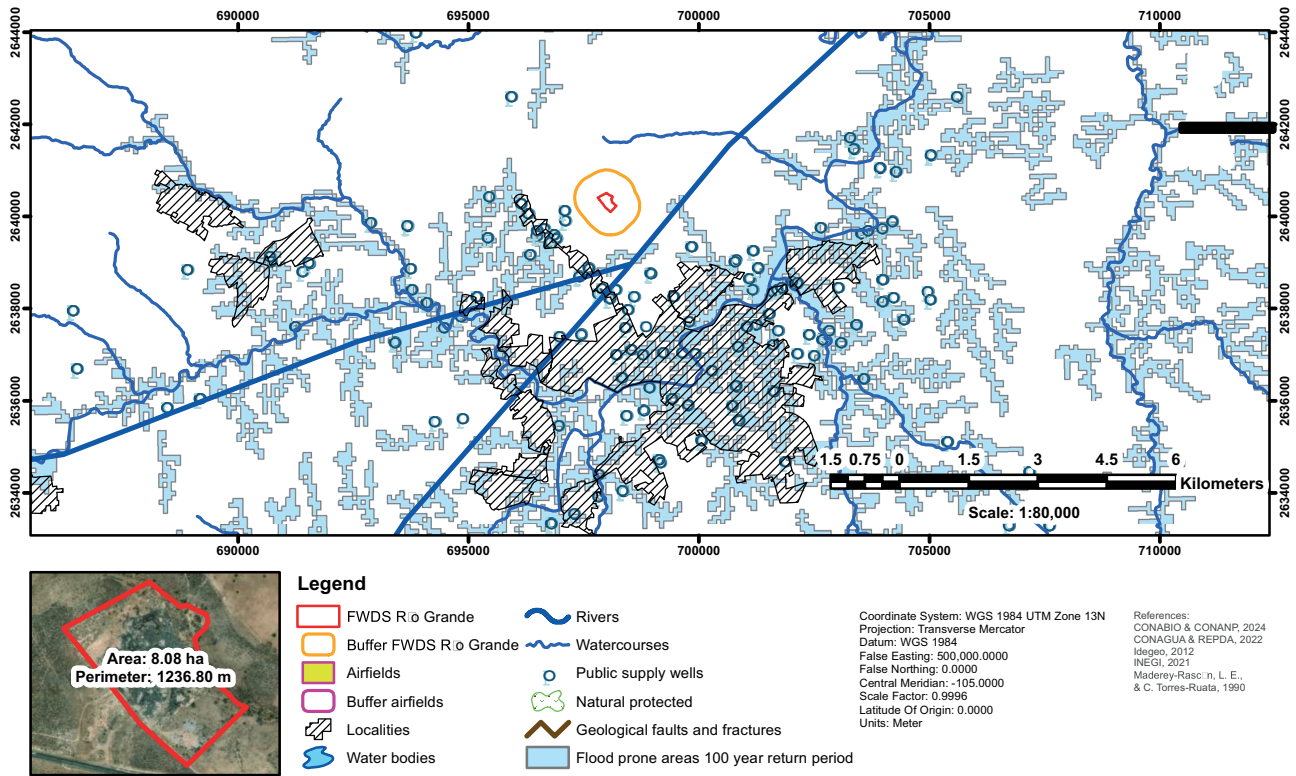


Fig. S37. Location restrictions map of the Río Grande final waste disposal site.

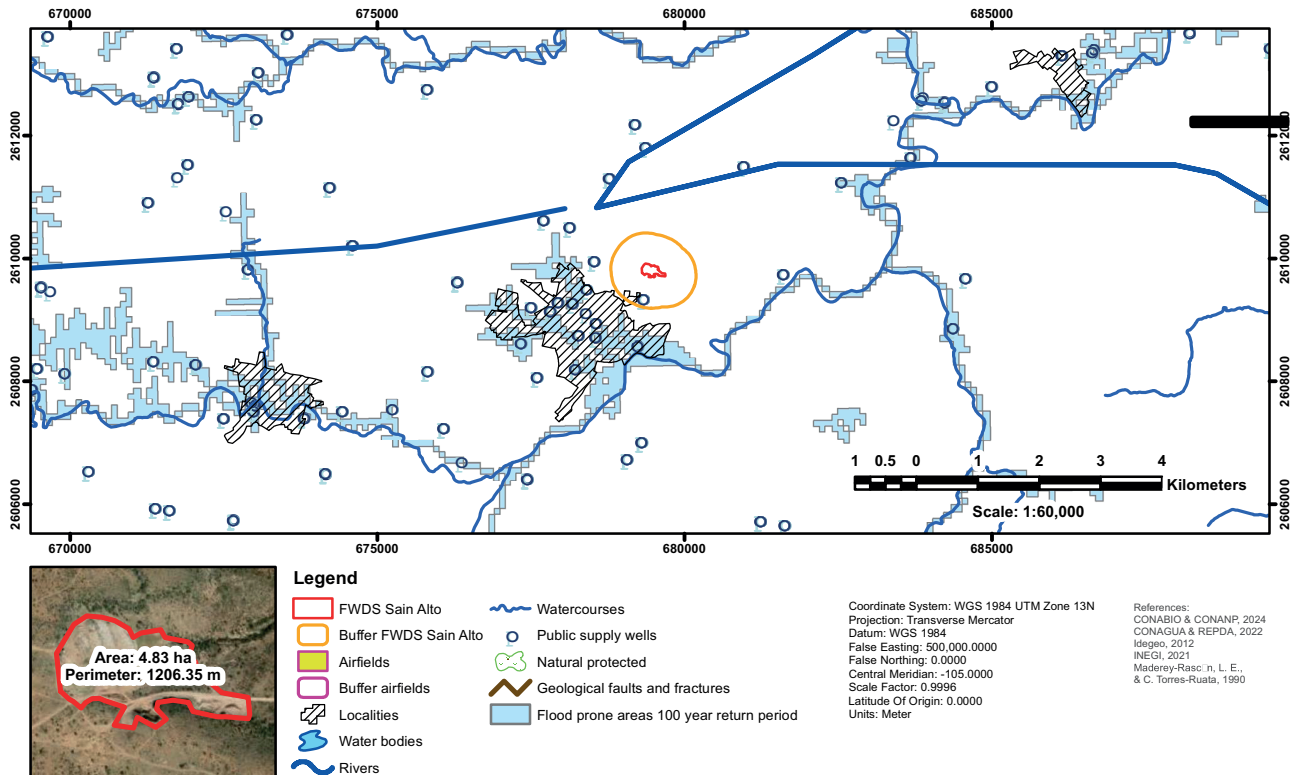


Fig. S38. Location restrictions map of the Sain Alto final waste disposal site.

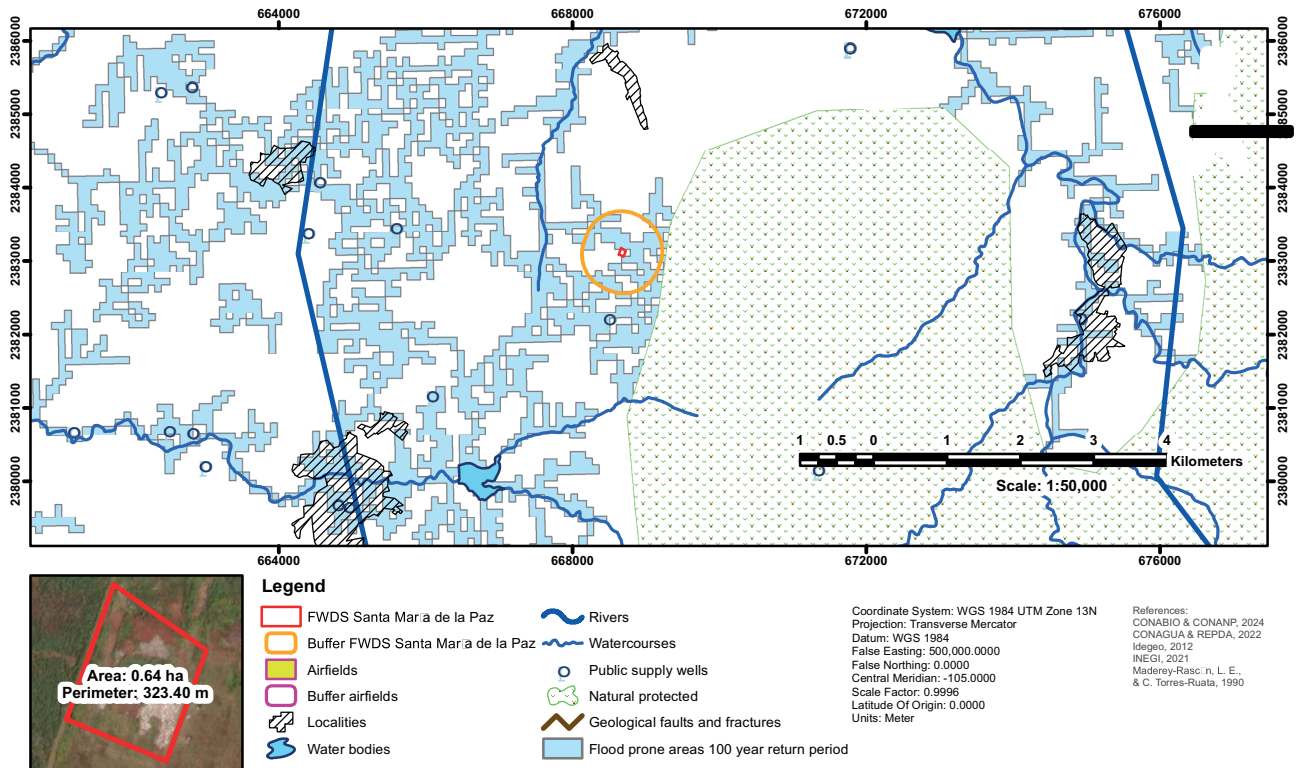


Fig. S39. Location restrictions map of the Santa María de la Paz final waste disposal site.

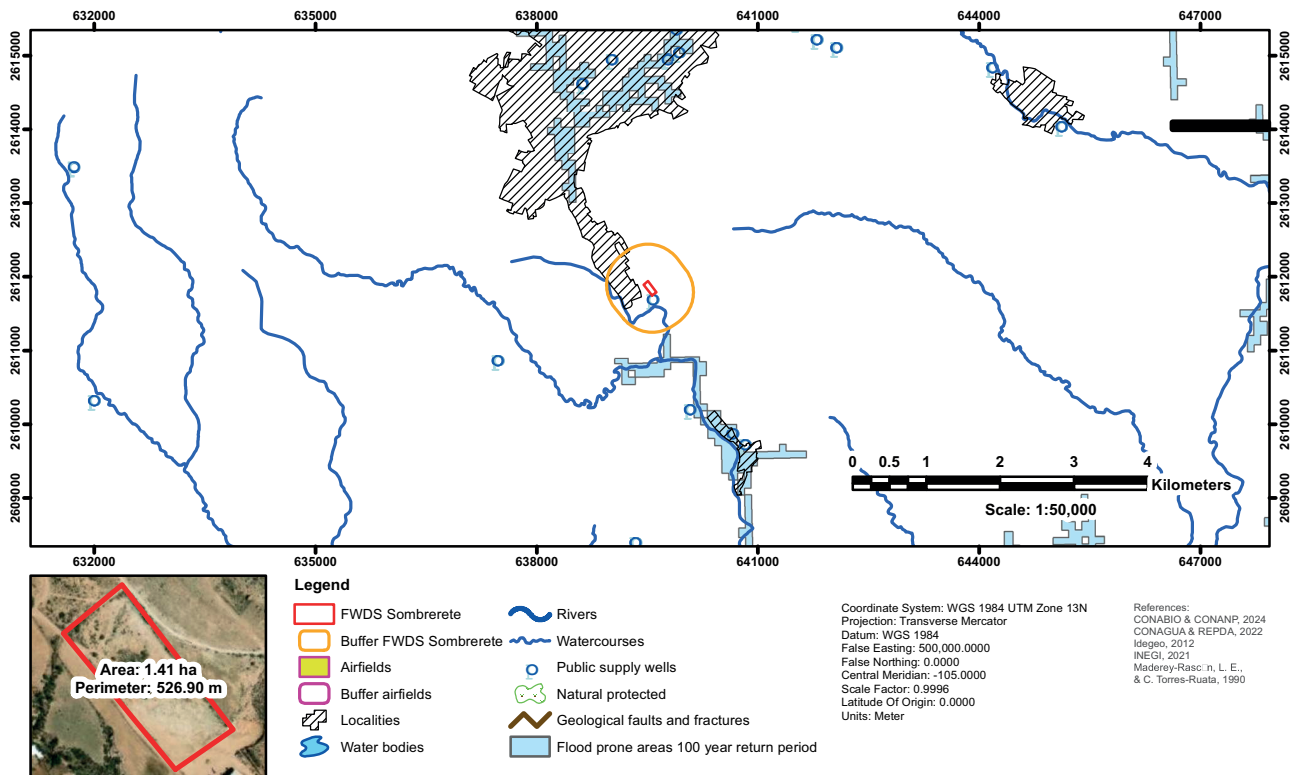


Fig. S40. Location restrictions map of the Sombretete final waste disposal site.

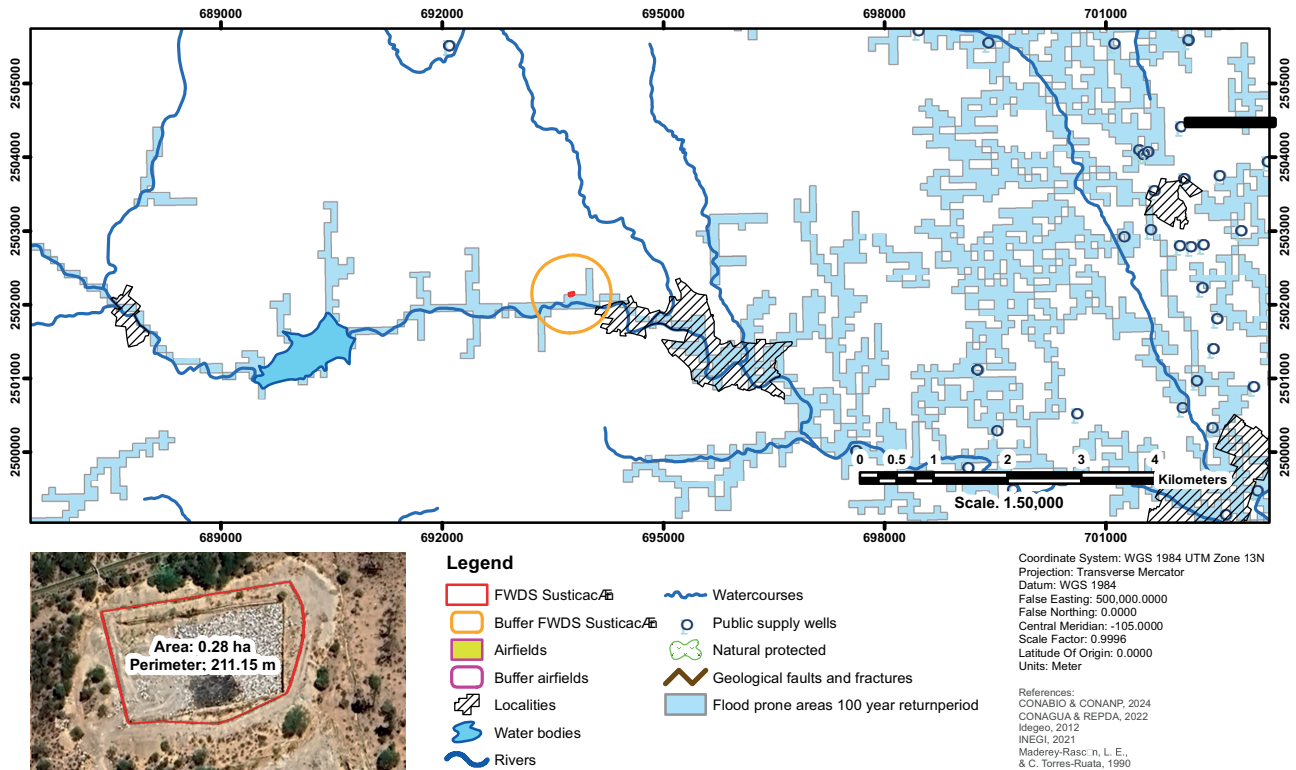


Fig. S41. Location restrictions map of the Susticacán final waste disposal site.

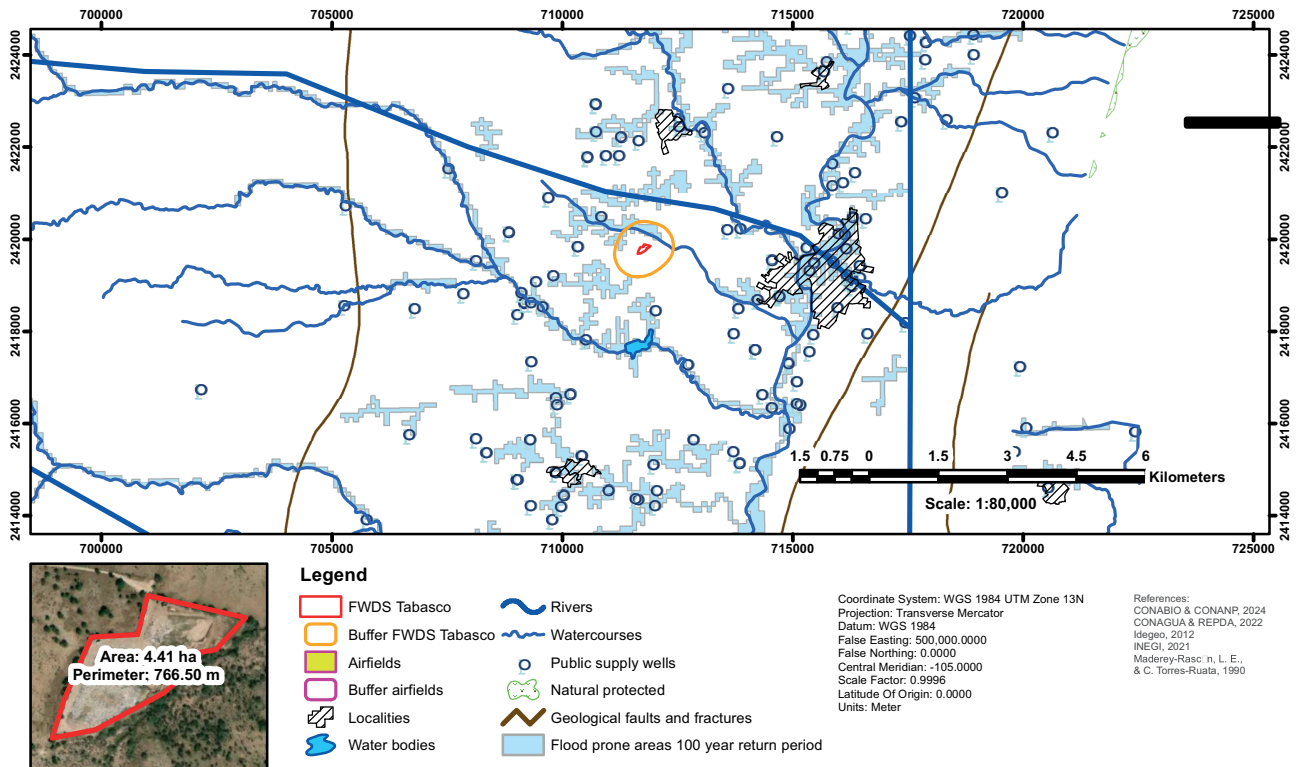


Fig. S42. Location restrictions map of the Tabasco final waste disposal site.

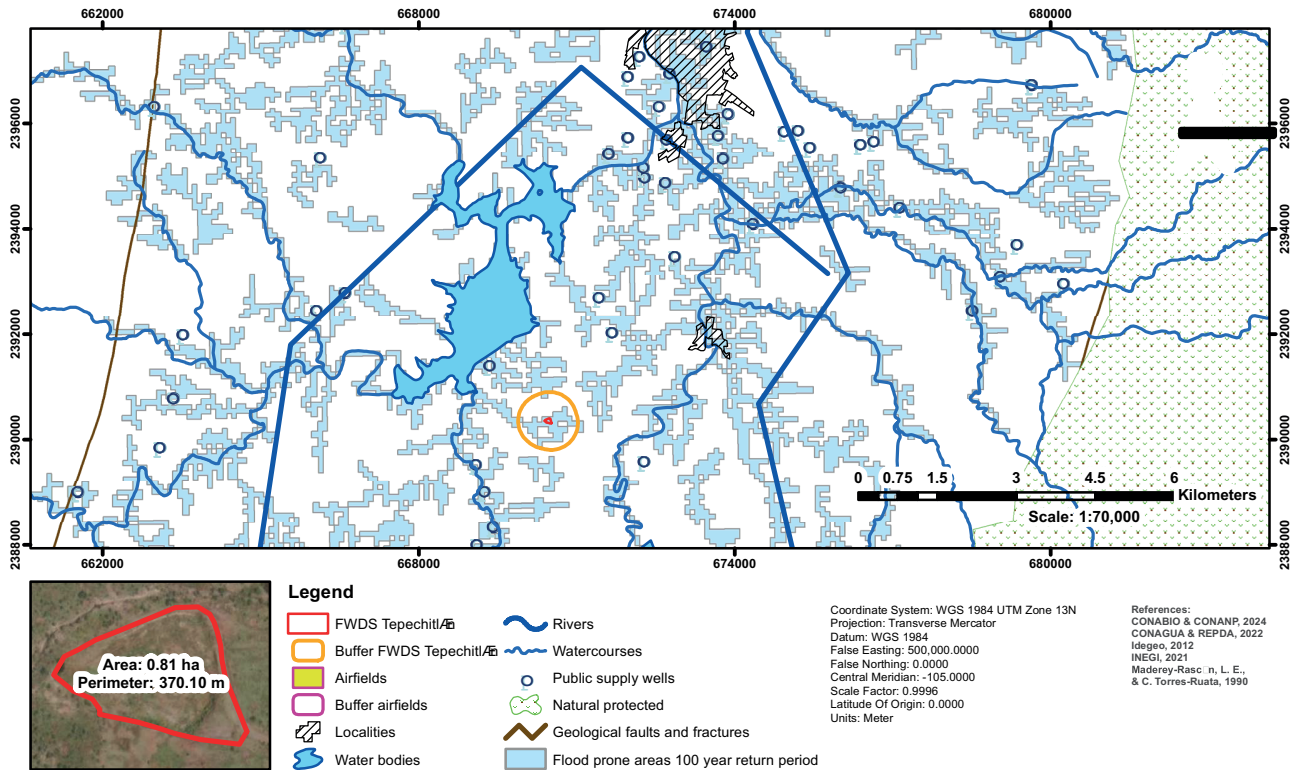


Fig. S43. Location restrictions map of the Tepechtlán final waste disposal site.

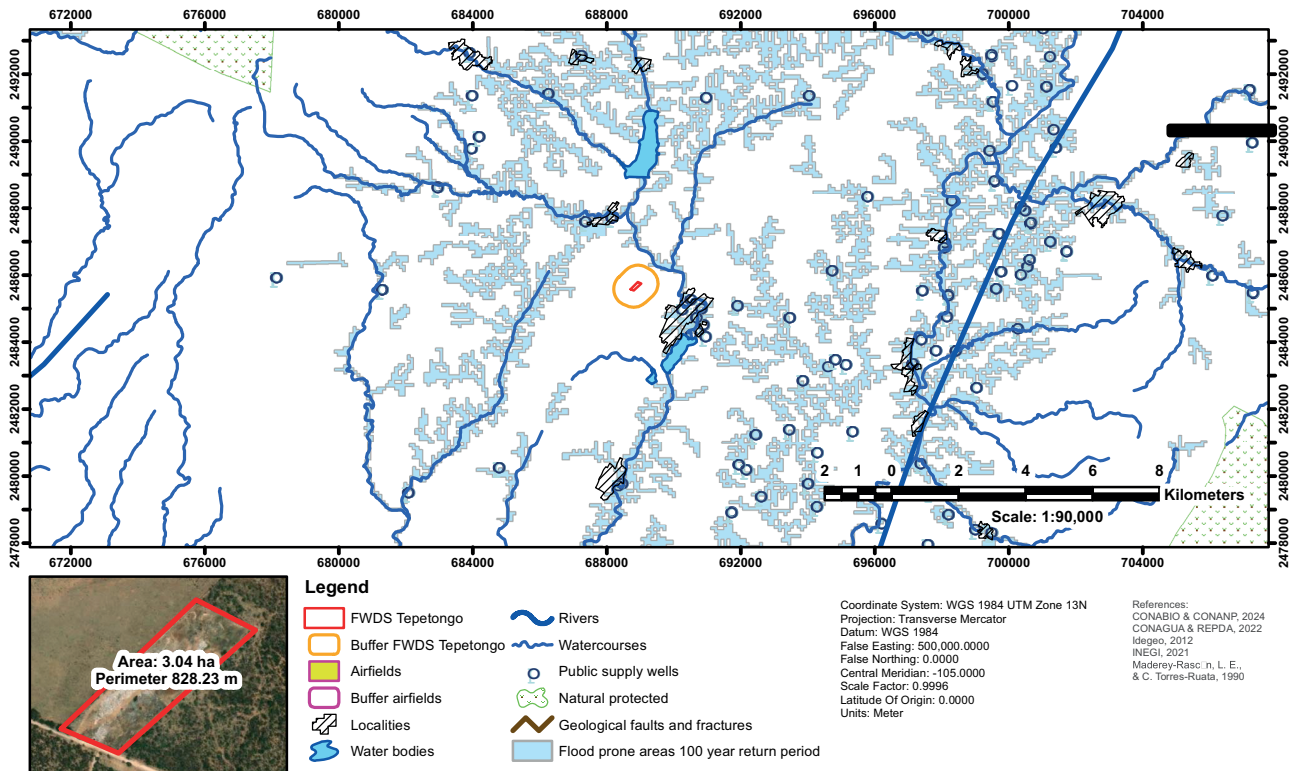


Fig. S44. Location restrictions map of the Tepetongo final waste disposal site.

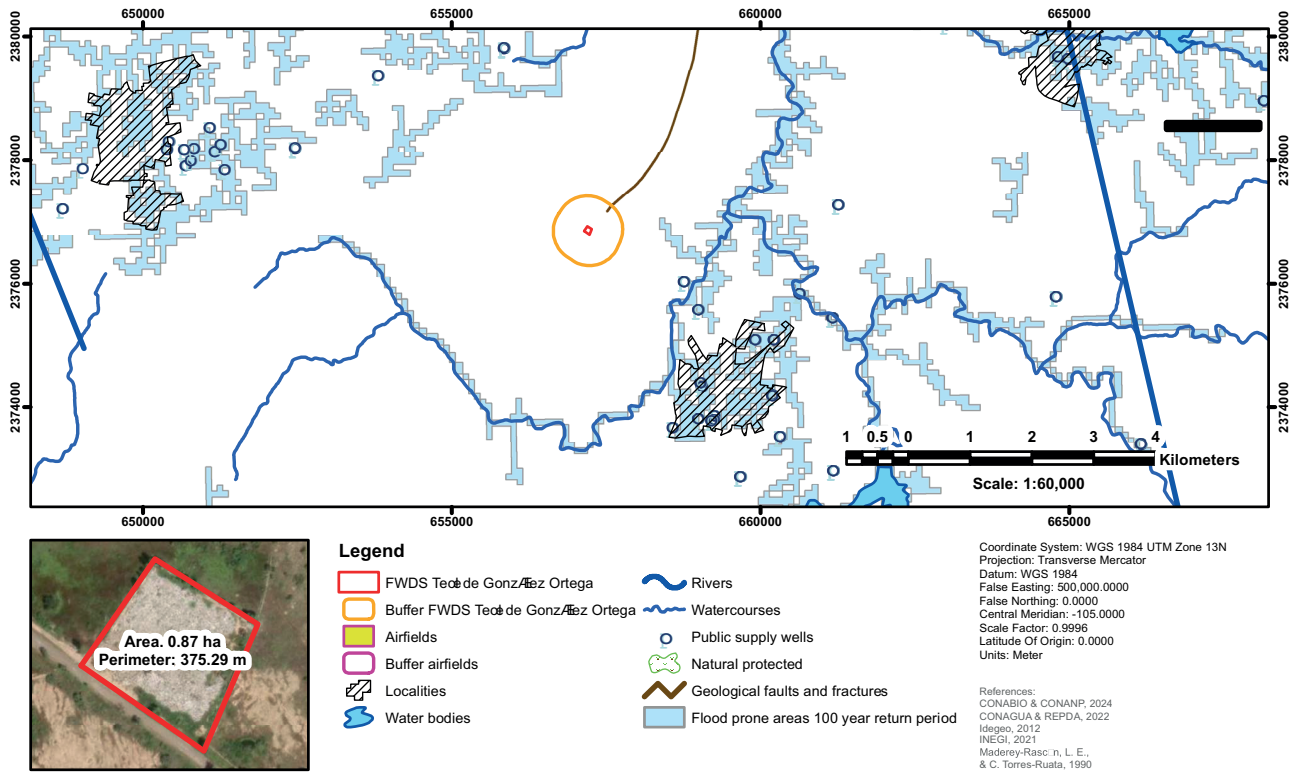


Fig. S45. Location restrictions map of the Teúl de González Ortega final waste disposal site.

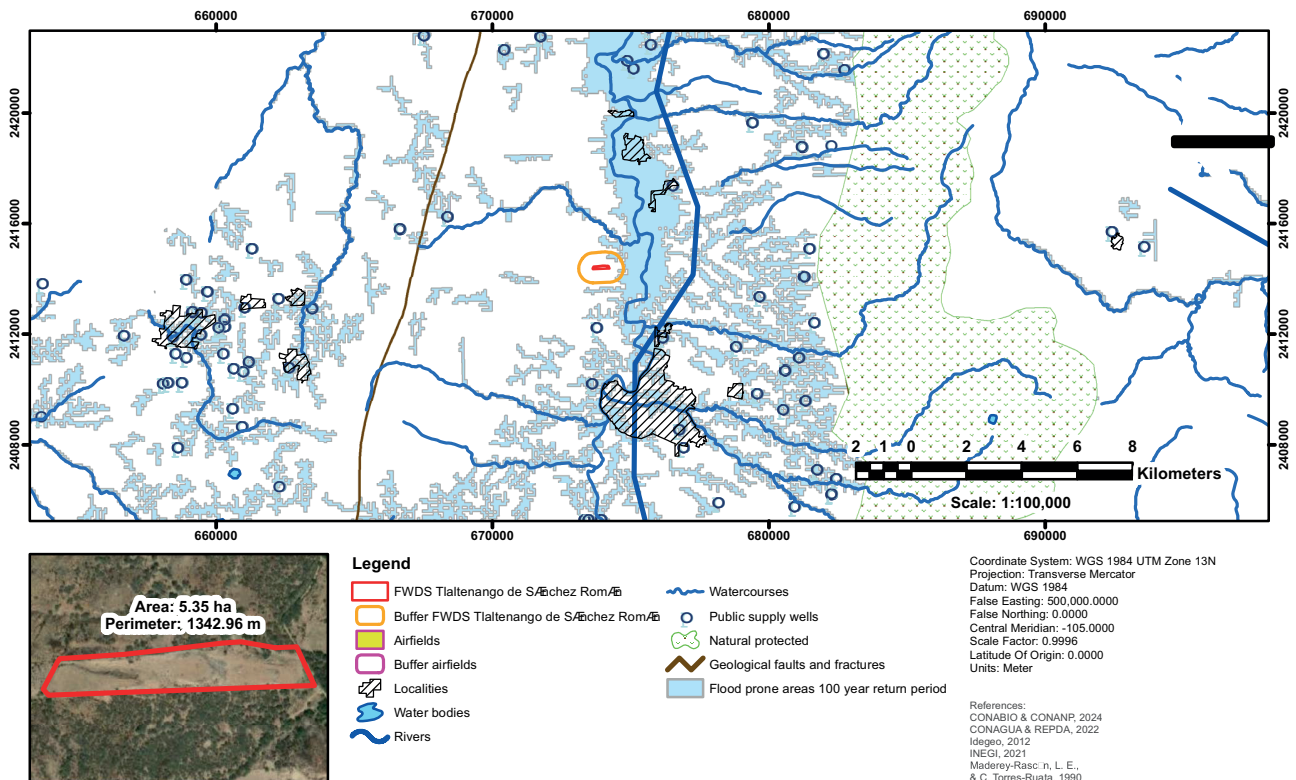


Fig. S46. Location restrictions map of the Tlaltenango de Sánchez Román final waste disposal site.

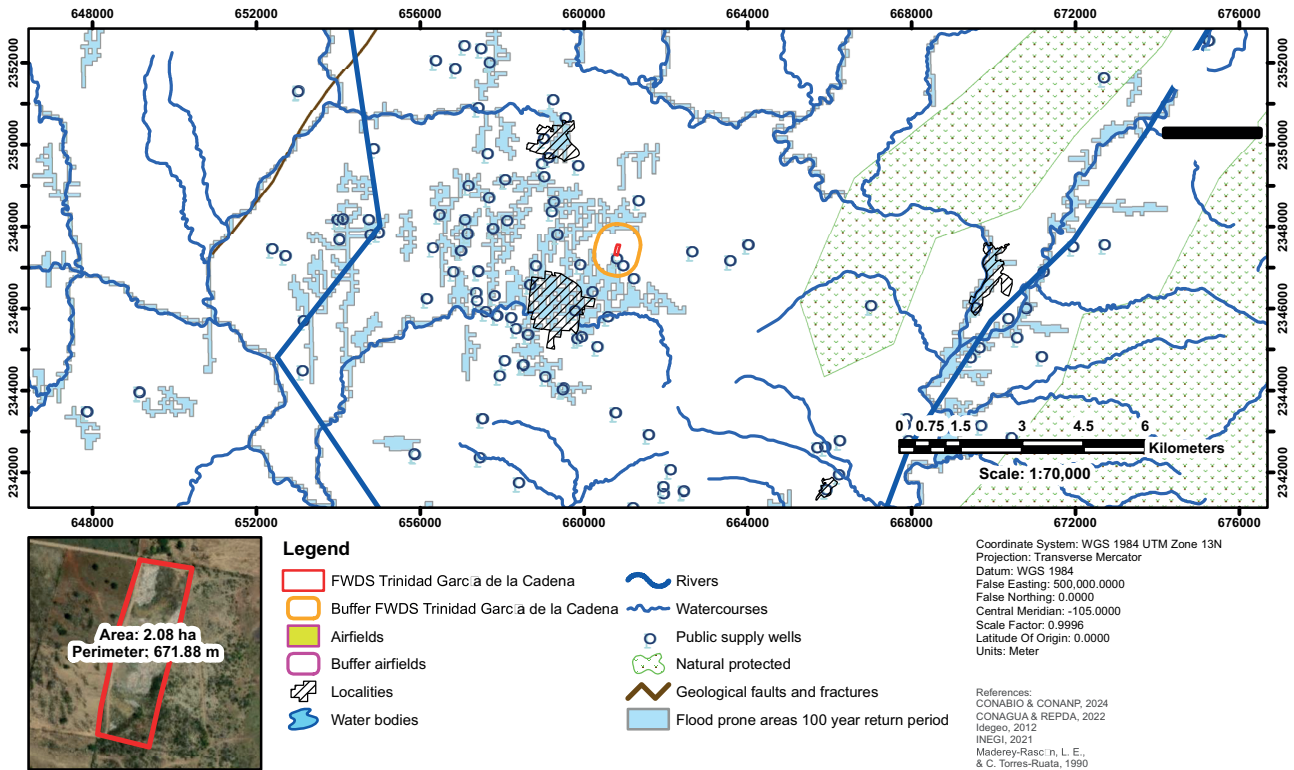


Fig. S47. Location restrictions map of the Trinidad García de la Cadena final waste disposal site.

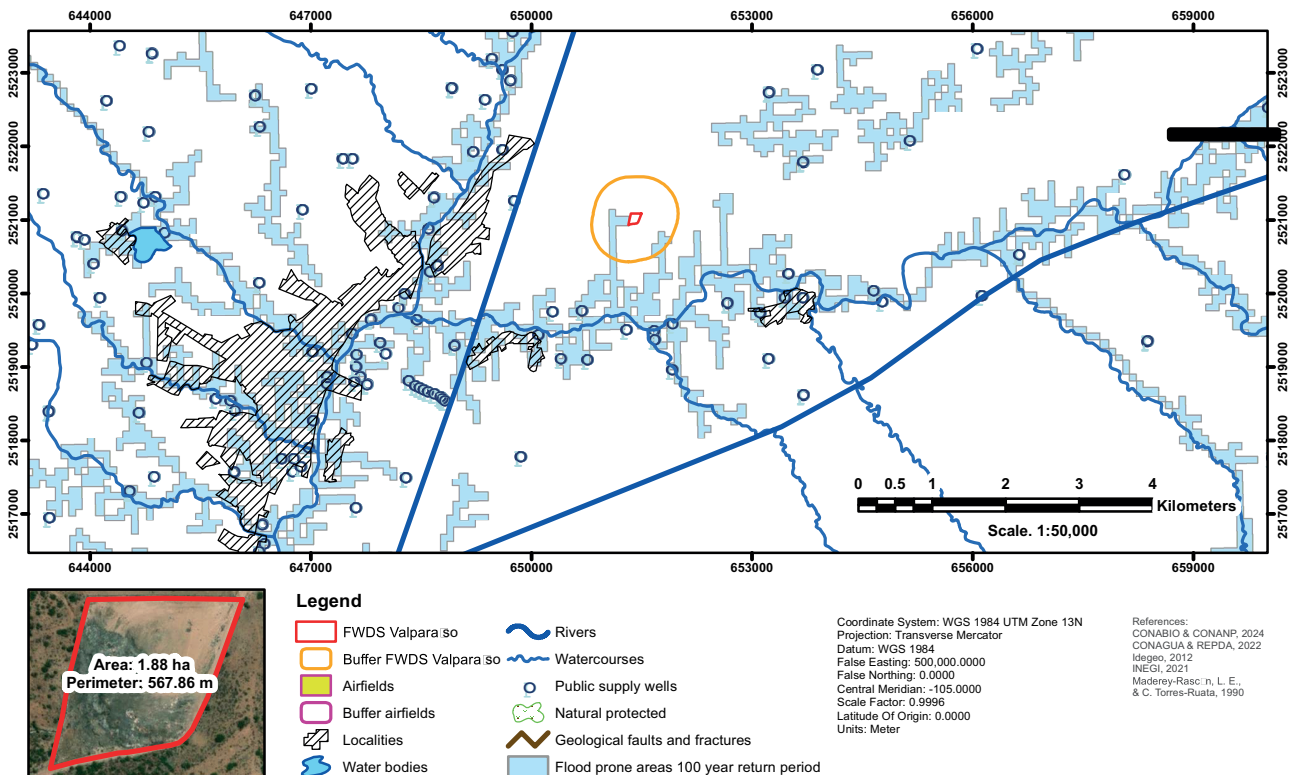


Fig. S48. Location restrictions map of the Valparaíso final waste disposal site.

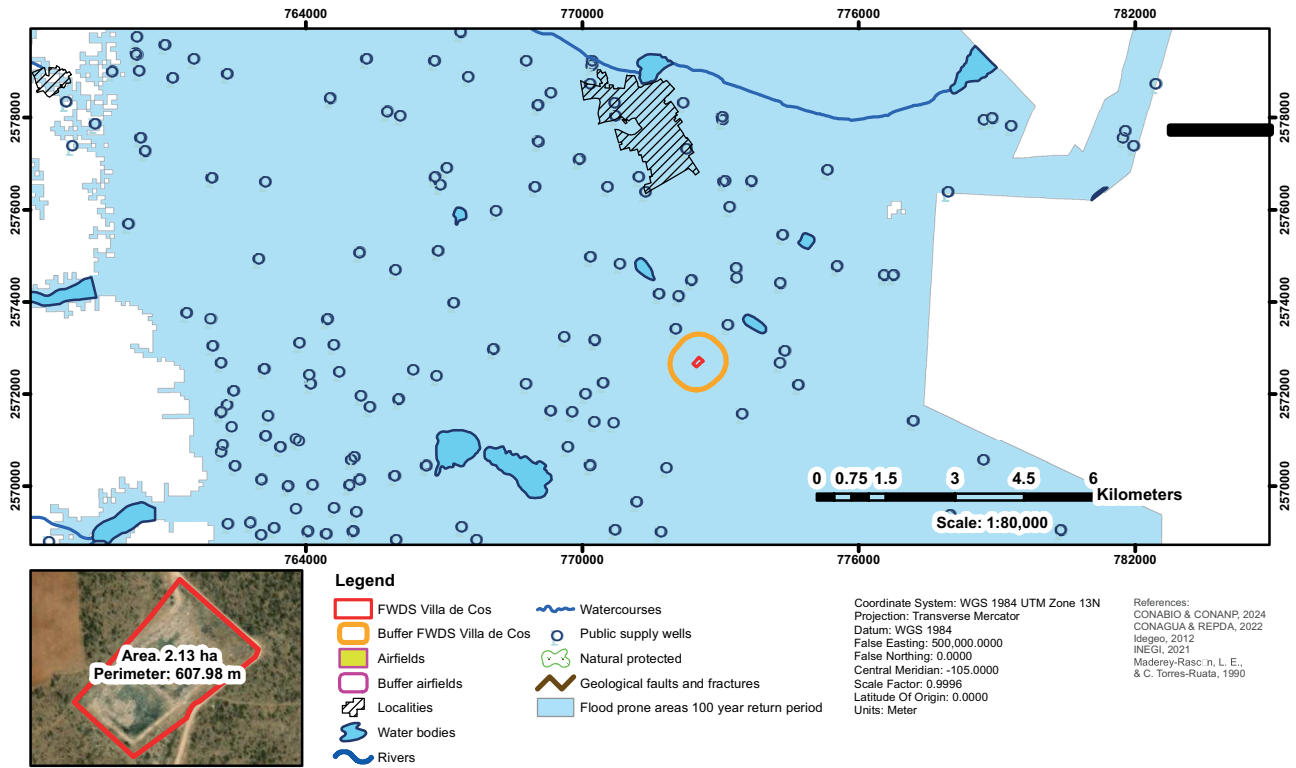


Fig. S49. Location restrictions map of the Villa de Cos final waste disposal site.

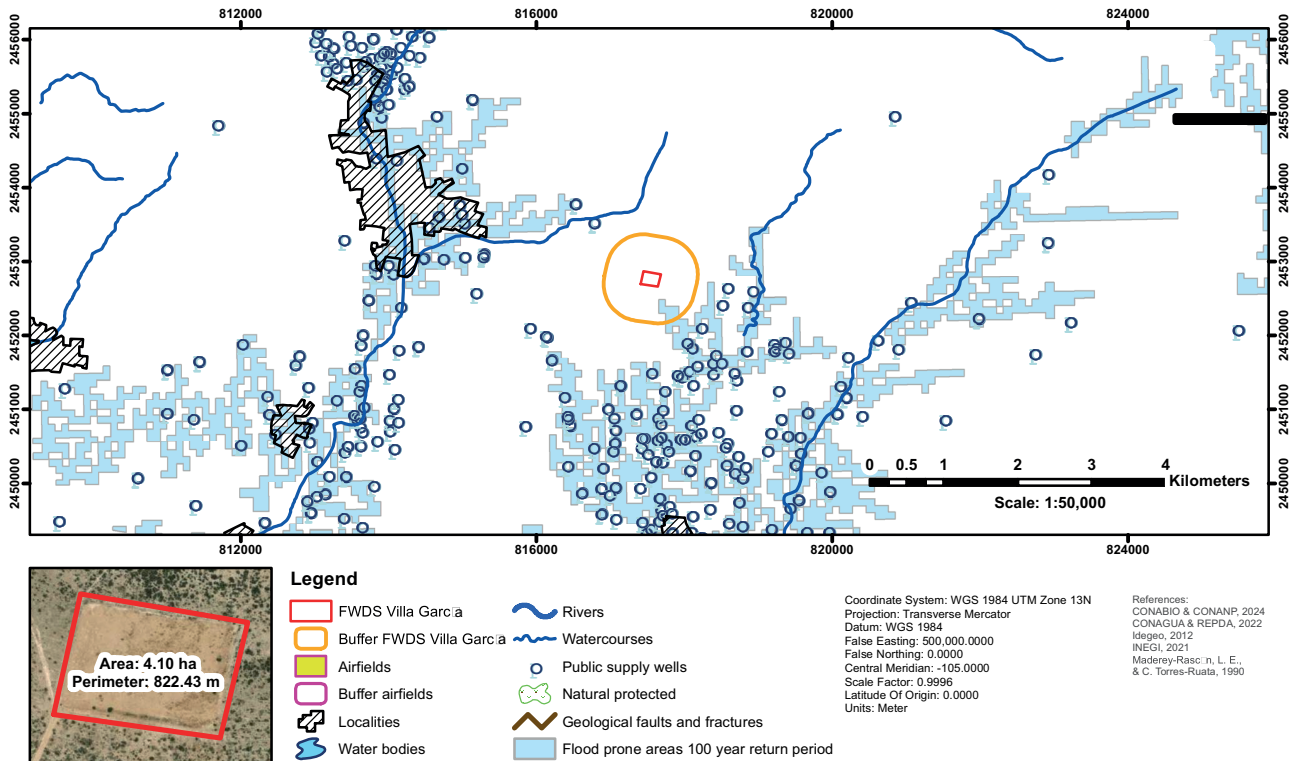


Fig. S50. Location restrictions map of the Villa García final waste disposal site.

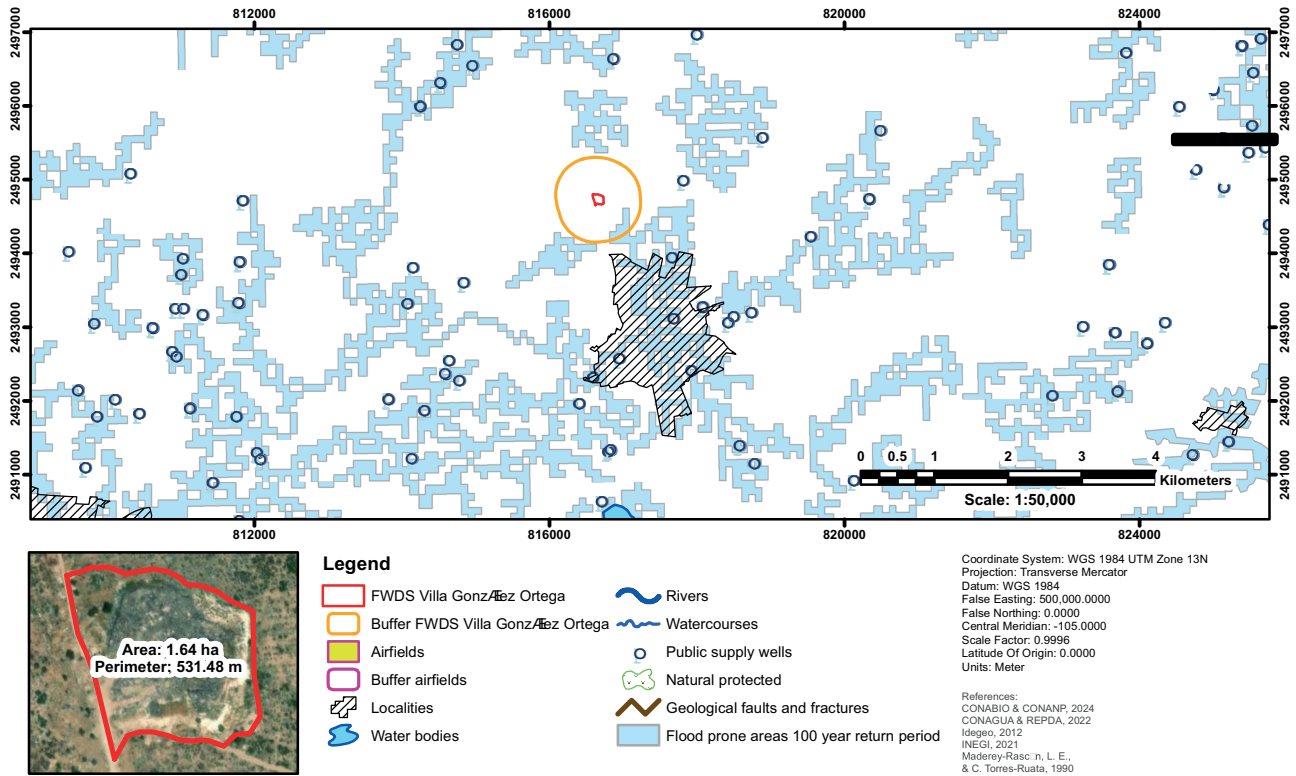


Fig. S51. Location restrictions map of the Villa González Ortega final waste disposal site.

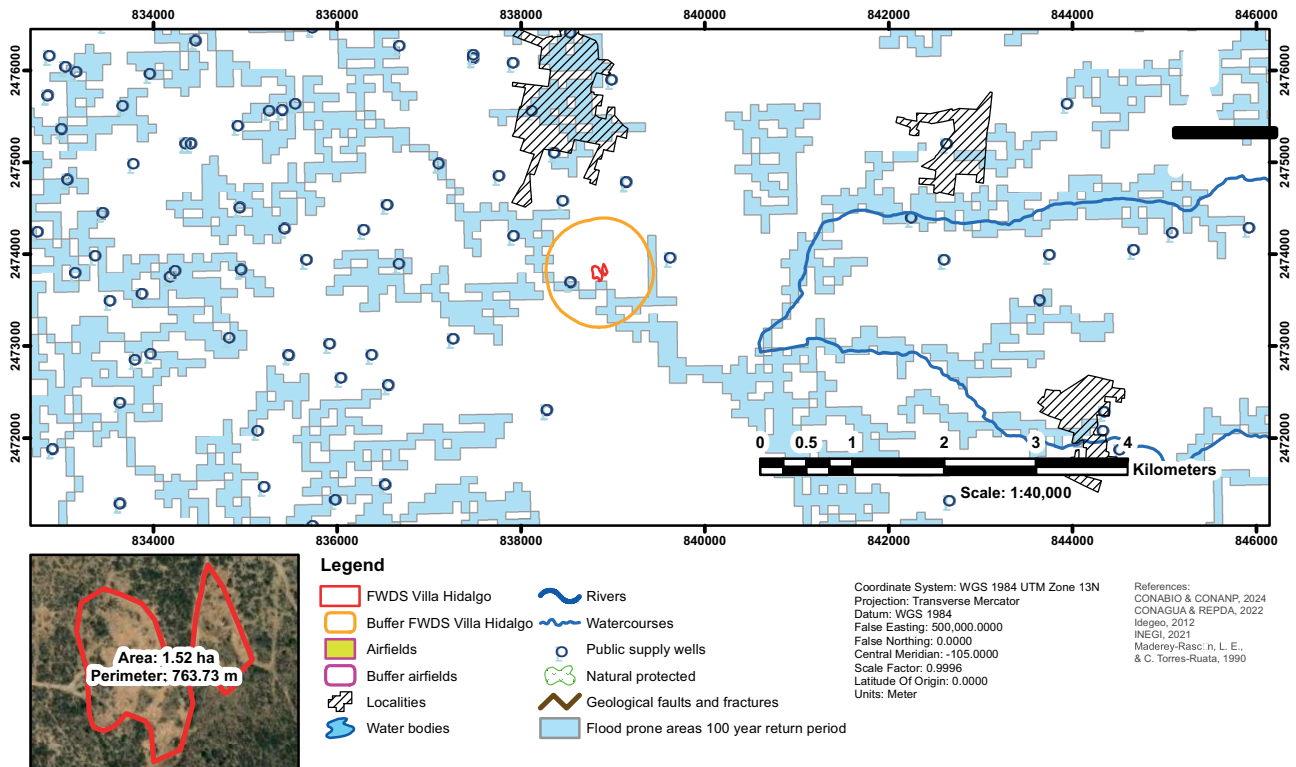


Fig. S52. Location restrictions map of the Villa Hidalgo final waste disposal site.

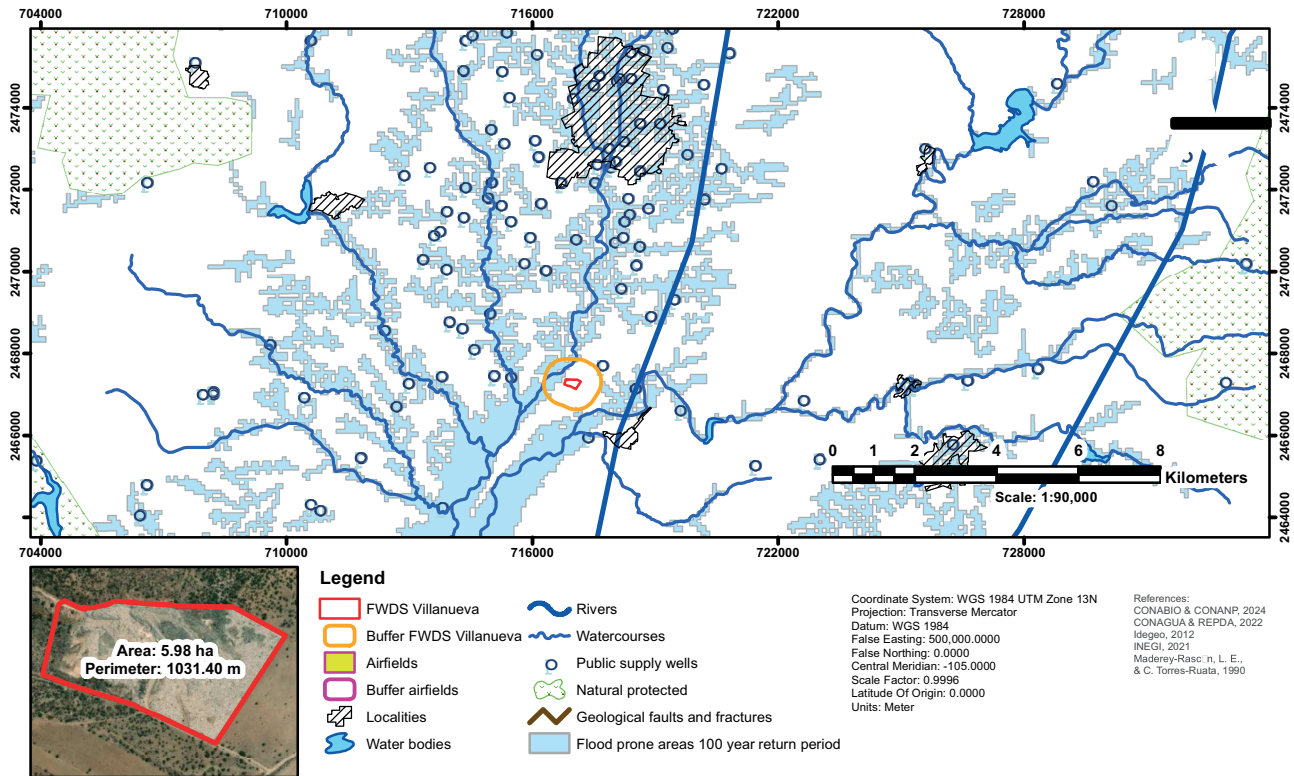


Fig. S53. Location restrictions map of the Villanueva final waste disposal site.

REFERENCES

- CENAPRED (2021). Sistema nacional de información sobre riesgos. Atlas nacional de riesgos por inundación occidente. Periodo de retorno TR=100. Centro Nacional de Prevención de Desastres [online]. <http://atlasnacionalderiesgos.gob.mx/archivo/visor-capas.html> 21/09/2024
- CONABIO and CONANP (2024). Áreas naturales protegidas federales de México, enero 2024, modificado por el Geoportal del Sistema Nacional de Información sobre Biodiversidad de México. Comisión Nacional para el Conocimiento y Uso de la Biodiversidad y Comisión Nacional de Áreas Naturales Protegidas [online]. <http://geoportal.conabio.gob.mx/metadatos/doc/html/anpmx.html> 21/09/2024
- CONAGUA and REPDA (2022). Aprovechamientos subterráneos Zacatecas 2022. Comisión Nacional del Agua and Registro Público de Derechos de Agua [online]. <https://sinav30.conagua.gob.mx:8080/SINA/?opcion=repda> 22/09/2024
- Idegeo (2012). Fallas fracturas en México 2002, conjunto de datos vectoriales geológicos. Continuo nacional. Fallas fracturas escala 1:1 000 000. Servicios de Información Geoespacial. Plataforma de Identificación Geoespacial, Instituto Nacional de Estadística y Geografía [online]. <https://www.inegi.org.mx/app/biblioteca/ficha.html?upc=702825267605> 22/09/2024
- INEGI (2021). Conjunto de datos vectoriales de la carta topográfica escala 1:250000 por entidad federativa (2021), Zacatecas. Instituto Nacional de Estadística y Geografía [online]. <https://www.inegi.org.mx/temas/topografia/#descargas> 22/09/2024
- INEGI (2022). Conjunto de datos vectoriales Geológicos serie I. Zacatecas, escala 1:250000. Instituto Nacional de Estadística y Geografía [online]. https://www.inegi.org.mx/contenidos/productos/prod_serv/contenidos/espanol/bvinegi/productos/geografia/tematicas/Geologia_hist/1_250_000/702825674861_s.zip 21/09/2024
- Maderey-Rascón L.E. and Torres-Ruata C. (1990). Hidrografía, escala 1:4000000. En: Hidrografía e hidrometría. Tomo II, sección IV, 6.1. Atlas Nacional de México (1990-1992). Instituto de Geografía, Universidad Nacional Autónoma de México, Ciudad de México, México [online]. http://www.conabio.gob.mx/informacion/gis/?vns=gis_root/hidro/rios/hidro4mgw 20/09/2024