

Comparison of maximum likelihood estimators and regression models for burn severity mapping in Mediterranean forests using Landsat TM and ETM+ data

Alexander Ariza*
Javier Salas Rey**
Silvia Merino de Miguel***

Received July, 2018; accepted October 10, 2018

Abstract

During the last decade, there has been a growing number of published works about burn severity of forest fires using remote sensing data for both natural resources management and research purposes. Many of these studies quantify changes between pre- and post-fire vegetation conditions from satellite images using spectral indices; however, there is an active discussion about which of the most commonly used indices is more suitable to estimate burn severity, and which methodology is the best for the estimation of severity levels. This study proposes and evaluates a Maximum Likelihood Estimation (MLE) Automatic Learning Algorithm for mapping burn severity as an alternative to regression models. We developed both these methods using GeoCBI (Geometrically structured Composite Burn Index) field data, and six different spectral indices (derived from Landsat TM and ETM+ images) for two forest fires in central Spain. We compared the capability to discriminate burn severity of these indices through a spectral separability index (M), and evaluated their concordance with GeoCBI-based field data using the coefficient of determination (R²). Afterwards, the selected index was used for the regression and MLE models for estimating burn severity levels (unburned, low, moderate, and high), and validated with field data. The

* Universidad de Alcalá (UAH), Madrid, España, correos electrónicos: alexanderariza@edu.uah.es, alexanderariza@gmail.com

** UAH, Madrid, España, correo electrónico: javier.salas@uah.es

*** Universidad Politécnica de Madrid, UPM, Madrid, España, correo electrónico: silvia.merino@upm.es

RBR index showed a better spectral separability (average between two fires $M= 2.00$) than dNBR ($M= 1.82$) and RdNBR ($M= 1.80$). Additionally, GeoCBI had a higher adjustment with RBR ($R^2= 0.73$) than with RdNBR ($R^2= 0.72$) and dNBR ($R^2= 0.71$). Finally, MLE showed the highest overall classification accuracy ($Kappa= 0.65$), and the best accuracy for each individual class.

Key words: *Regression models, Maximum likelihood, GeoCBI, dNBR, RdNBR, RBR.*

Resumen

Durante la última década, ha habido un número creciente de trabajos publicados sobre la gravedad de los incendios forestales utilizando datos de teledetección para fines de gestión de recursos naturales y de investigación. Muchos de estos estudios cuantifican los cambios entre las condiciones de vegetación antes y después del incendio a partir de imágenes satelitales utilizando índices espectrales; sin embargo, hay una discusión activa sobre cuál de los índices más comúnmente usados es más adecuado para estimar la severidad de la quemadura, y qué metodología es la mejor para la estimación de los niveles de severidad. Este estudio propone y evalúa un algoritmo de aprendizaje automático de Estimación de Máxima Verosimilitud (EMV) para mapear la severidad de las quemaduras como una alternativa a los modelos de regresión. Desarrollamos ambos métodos usando datos de campo de GeoCBI (Índice Compuesto de Quema Geométricamente Estructurado, siglas en inglés) y seis índices espectrales diferentes (derivados de imágenes Landsat TM y ETM+) para dos incendios forestales en el centro de España. Comparamos la capacidad para discriminar la severidad de la quemadura de estos índices a través de un índice de separabilidad espectral (M), y evaluamos su concordancia con datos de campo basados en GeoCBI usando el coeficiente de determinación (R^2). Posteriormente, el índice seleccionado se utilizó para los modelos de regresión y la EMV para estimar los niveles de severidad de quema (sin quemar, bajo, moderado y alto), y se validó con datos de campo. El índice RBR mostró una mejor separabilidad espectral (promedio entre dos fuegos $M= 2.00$) que el dNBR ($M= 1.82$) y RdNBR ($M= 1.80$). Además, GeoCBI tuvo un mayor ajuste con RBR ($R^2= 0.73$) que con RdNBR ($R^2= 0.72$) y dNBR ($R^2= 0.71$). Finalmente, la EMV mostró la mayor precisión de clasificación general ($Kappa= 0,65$) y la mejor precisión para cada clase individual.

Palabras clave: *Modelos de regresión, Máxima Verosimilitud, GeoCBI, dNBR; RdNBR, RBR.*

Resumo

Durante a última década, surgiu um número crescente de trabalhos publicados sobre a gravidade dos incêndios florestais utilizando dados de sensoriamento remoto para

fins de gestão de recursos naturais e de investigação. Muitos destes estudos quantificam as mudanças entre as condições de vegetação antes e depois do incêndio a partir de imagens de satélites utilizando índices espectrais; entretanto, há uma discussão ativa sobre qual os índices mais comumente usados é mais adequado para estimar a severidade do incêndio, e que metodologia é a melhor para a estimação dos níveis de severidade. Este estudo propõe e avalia um algoritmo de aprendizagem automático de Estimação de Máxima Verosimilitude (EMV) para mapear a severidade dos incêndios como uma alternativa aos modelos de regressão. Desenvolvemos ambos os métodos usando dados de campo de GeoCBI (Índice Composto de Queima Geometricamente Estruturado, siglas em inglês) e seis índices espectrais diferentes (derivados de imagens Landsat TM e ETM+) para dois incêndios florestais no centro da Espanha. Comparamos a capacidade para discriminar a severidade do incêndio destes índices através de um índice de separabilidade espectral (M), e avaliamos sua concordância com dados de campo baseados no GeoCBI usando o coeficiente de determinação (R2). Posteriormente, o índice selecionado foi utilizado para os modelos de regressão e a EMV para estimar os níveis de severidade de queima (sem queima, baixo, moderado e alto), e se validou com dados de campo. O índice RBR mostrou uma melhor separabilidade espectral (média entre dois incêndios $M= 2.00$) que o dNBR ($M= 1.82$) e RdNBR ($M= 1.80$). Além disso, GeoCBI teve um maior ajuste com RBR ($R2= 0.73$) que com RdNBR ($R2= 0.72$) e dNBR ($R2= 0.71$). Finalmente, a EMV mostrou a maior precisão de classificação geral ($Kappa= 0,65$) e a melhor precisão para cada classe individual.

Palavras chave: *Modelos de regressão, Máxima Verosimilitude, GeoCBI, dNBR; RdNBR, RBR.*

Introduction

Wildfire is a primary disturbance phenomenon with 200-500 million hectares burned annually across the globe (Amraoui *et al.*, 2013). Fire affects large areas in almost all kinds of terrestrial ecosystems, so it is a more widespread phenomenon than any other natural disturbance (Ichoku *et al.*, 2008 and Smith *et al.*, 2016). In some cases, e.g. savannas and grasslands, fire plays an ecologically significant role in biogeochemical cycles and disturbance dynamics (Montealegre *et al.*, 2014), influencing the temporal variability in carbon, water, and energy fluxes; however, in other cases, fire may lead to both long-term destruction of the vegetation cover and land degradation. In the European countries of the Mediterranean Basin, fire is a major hazard with an average of 45,000 fires per year which affect 0.5 million hectares (Montealegre *et al.*, 2014 and Quintano *et al.*, 2017).

Fire has a significant effect on both functioning and composition of ecosystems, and in landscape structure, it affects the quality of soil, air and water, and has important impacts on human health, lives and properties (San-Miguel-Ayanz *et al.*, 2103). In Spain, during the last decade (2000-2010), there has been a clear decrease in the number of fires, along with an increase in the occurrence of large fires (>100 ha) (Montealegre *et al.*, 2014 and Eleazar, 2013). Besides, in 2012, 64% of the total burned area corresponded to a single large fire (Montealegre *et al.*, 2014). This increase in the number of large wildfires might be due to an increase in fuel continuity, which in turn is due to changes in land use during recent decades (Pausas *et al.*, 2008). Even though many Mediterranean species exhibit different fire-adaptive strategies, human-induced changes in land use are making many landscapes more vulnerable to high-intensity wildfires (Collins *et al.*, 2013). At a local scale, these effects vary across the landscape depending on factors such as fire intensity, fire and burn severity, fire recurrence and fire return interval (Cocke *et al.*, 2005 and Viedma *et al.*, 2015).

Information about fire effects on ecosystems is useful to ecologists and land managers who want to understand vegetation recovery and succession, and to plan future restoration works (Roy *et al.*, 2006). Besides, fire-induced severity can help to reduce uncertainty in total gas emissions estimations from biomass burning (Holden *et al.*, 2005), water quality determination, and radiation budget assessment (Quintano *et al.*, 2017 and Keeley, 2009). Severity mapping can be useful for highlighting the most affected areas, and explore ecological responses before and after the fire (Chuvieco, 2009). Fire causes significant changes, as vegetation consumption and charring, destruction of leaf chlorophyll, exposure of soil, and alteration of both above- and below-ground moisture (White *et al.*, 1996). Fortunately, most of these changes induce spectral variations that can be captured by some of the available satellite sensors (Chuvieco, 2009; White, 1996 and Lentile *et al.*, 2006). In fact, satellite data has been used for decades to assess many factors related to fire (Lentile *et al.*, 2006).

Within the remote sensing community, severity has been related to vegetation consumption, alteration of soil properties and long-term post-fire vegetation mortality and recovery, among others (Lentile *et al.*, 2006). In particular, fire severity has been traditionally associated with active fire characteristics and immediate post-fire effects; whereas burn severity incorporates both short- and long-term effects (De Santis *et al.*, 2007). For many authors, burn severity is related to the amount of time necessary to return to previous state and functionality (Lentile *et al.*, 2006). In this paper, we focus on burn severity and define it as the way to identify the impact of fire on soil and plants once the fire is extinguished, consequently being related to what is left (post-fire phase) (De Santis *et al.*, 2007).

There is a wide range of remote sensing platforms along with different methods for determining burn severity (Parsons *et al.*, 2010), most of them including the use of post-fire field data (De Santis *et al.*, 2007). Many studies have demonstrated the sensitivity of various spectral bands to significant changes in the radiance of burned vegetation. In particular, visible, near-infrared (NIR), and short-wave infrared (SWIR) channels have been profusely used in the study of fire effects on vegetated areas (White *et al.*, 1996; Miller and Quayle, 2015 and Key and Benson, 2006). NIR reflectance is primarily sensitive to the spongy mesophyll layer at the leaf level (Knippling, 1970), while SWIR to water content, ash cover, and soil mineral content (Chuvieco, 2009 and Miller and Quayle, 2015). On the other hand, reflectance in the visible region depends on chlorophyll content. These bands have been used to study fire effects individually, or summarized in spectral indices of two mainly categories: vegetation or burned area indices. The Normalized Difference Vegetation Index (NDVI) has been related to field measurements of burn severity (Chafer *et al.*, 2004), while the Normalized Burn Ratio (NBR), proposed by Key and Benson (Key and Benson, 2002), is the most effective NIR-SWIR index for burn severity available in the literature (De Santis *et al.*, 2007). These two indices are defined as:

$$NDVI = \frac{\rho_{NIR} - \rho_{RED}}{\rho_{NIR} + \rho_{RED}} \quad (1)$$

$$NBR = \frac{\rho_4 - \rho_7}{\rho_4 + \rho_7} \quad (2)$$

Where ρ_{NIR} and ρ_{RED} are the reflectance of NIR and red bands respectively, while ρ_4 and ρ_7 are the reflectance of band 4 (NIR) and band 7 (SWIR) of Landsat TM.

Since burn severity depends on pre-fire conditions, estimation techniques should rely on a temporal evaluation of the vegetation cover. Consequently, some authors suggested the use of differential indices like the dNDVI (NDVI pre-fire minus NDVI post-fire) or the dNBR (NBR pre-fire minus NBR post-fire), proposed by Key and Benson (Key and Benson, 2002). Using this absolute change detection algorithm, barren areas unchanged by fire would not appear as high severity areas (Key and Benson, 2006). However, the use of differential indices does not solve one of the disadvantages of using continuous variables, which is the ambiguity in the definition of threshold values of severity classes. As shown in Table 1, different dNBR threshold values might correspond to the same field-based severity classes, leading to need of undergoing a calibration process for every new application of the procedure (Miller and Quayle, 2015 and Miller and Thode, 2007).

Table 1
Variability in the definition of the thresholds of burn severity
through the dNBR spectral index

Study	Region	Severity level			
		Unburned	Low	Moderate	High
Parker <i>et al.</i> (2015)	Australia	<77	78-257	258-427	>428
Miller and Thode (2007)	California, USA	<41	41-176	177-366	>367
Key and Benson (2006)	South of Canada	<99	100-269	270-659	>660
Hoscilo <i>et al.</i> (2013)	Indonesia	<53	54-213	214-550	>550
Montealegre <i>et al.</i> (2014)	Spain	<81	82-198	199-545	>545

With the objective of overcoming some of the mentioned disadvantages, Miller and Thode (Miller and Thode, 2007) presented a relativized version of dNBR, called the Relative dNBR (RdNBR). An index, as described by Parks *et al.* (2014), is a metric of relative change (rather than absolute change), thus it emphasizes change relative to the amount of pre-fire vegetation cover. Posteriorly, a new Landsat-based burn severity metric arose: the Relativized Burn Ratio (RBR), which provided an alternative to dNBR and RdNBR; this new index, developed by Parks *et al.* (2014), showed a higher capability for detection change, even where pre-fire vegetation cover was low. These two indices are defined as:

$$RdNBR = \frac{NBR_{PRE-FIRE} - NBR_{POST-FIRE}}{\sqrt{ABS(NBR_{PRE-FIRE}/1000)}} \quad (3)$$

$$RBR = \frac{dNBR}{NBR_{PRE-FIRE} + 1.001} \quad (4)$$

Reliable estimations of burn severity are only possible using remotely sensed information in combination with field data. Field estimations of severity are usually based on visual observations of the effects of fire on soil and vegetation, and on the assessment of a set of related parameters (De Santis and Chuvieco, 2009). Among the available methods, the Composite Burn Index (CBI) developed by Key and Benson (Key and Benson, 2002) within the FIREMON (Fire Effects Monitoring and Inventory Protocol) project, and its modified version, the Geometrically structured CBI (GeoCBI) (De Santis and Chuvieco, 2009), have been used widely as operational tools. Both field indices present two main advantages: firstly, they visually assess the magnitude of change in five individual strata (substrate, grasslands/low shrubs, tall

shrubs/saplings, understory trees, and canopy trees), and integrate them in a synoptic score (ranging from 0: unburned, to 3: highest severity) for the whole plot area (Key and Benson, 2006 and De Santis and Chuvieco, 2009). Secondly, these indices were designed to be used in conjunction with the satellite data. The GeoCBI index was preferred in this work since it is more consistently related to spectral reflectance than CBI for different ranges of burn severity (De Santis and Chuvieco, 2009).

Burn severity mapping techniques that use different calibration procedures between spectral indices (NDVI, dNDVI, NBR, dNBR, RdNBR, RBR) and field data (CBI, GeoCBI), have become more common in recent years (Miller and Quayle, 2015). Nonetheless, this is a rather difficult task since it is not always straightforward to relate field data to fire effects on satellite images (Miller and Quayle, 2015; Miller and Thode, 2007; Parks *et al.*, 2014 and De Santis and Chuvieco, 2009). In particular, remotely sensed data cannot always explain field-based burn severity through regression models, since the latter also depend on factors such as ecosystem type, vegetation structure or spatial distribution, among others. For this reason, the identification of complex fire patterns and its understanding from satellite data is a key issue in burn severity mapping research programs; and in this regard, data-driven artificial intelligence and machine-learning techniques are being increasingly used to classify multispectral remotely sensed data for practical applications in wildfire monitoring (Meng *et al.*, 2017 and Kern *et al.*, 2017).

In this study, we propose and evaluate a new burn severity mapping algorithm from Landsat spectral indices and field-based data, for the assessment of two forest fires of different characteristics (size and level of damage) in Spain. Specifically, we present an enhanced methodological approach based on a Supervised Classification by Maximum Likelihood Estimation (MLE), strengthening this method with a proposal for the reduction of the adjust error (compared against traditional regression models) and the evaluation of how this affects the classification accuracy. Within this framework, the objectives of this research were: a) to determine the remote sensing indices with the best performance for burn severity mapping in two different forest fires in Mediterranean ecosystems, and b) to evaluate the accuracy of spectral index-based supervised classification and regression models for burn severity mapping. These objectives are conceived as developing methods for burn severity mapping by land management agencies.

Materials and Methods

Study Area

The two study areas were located in central Spain. The first one was located in the south-western part of the Province of Madrid (Pantano de San Juan area), while the second one was located in the north-eastern part of the Province of Guadalajara (Riba

de Saelices area) (Figure 1). The Madrid fire burned a total area of 850 ha. The area was covered by pine forests (*Pinus pinaster*), and mixed forests of pine and an evergreen oak (*Quercus ilex*). The topography is abrupt and the altitudes range between 450 m and 1330 m. This region has a moderate-dry climate with annual precipitation of approximately 435 mm, and the average annual temperature is 13 °C (Ariza, 2017). The Guadalajara fire burned a total area of 13,000 ha. The fire started on July 16, 2005 and lasted 4 days. The area was covered by pine forests (*Pinus pinaster*), and mixed forests of pine with semi-deciduous oaks (*Quercus pyrenaica* and *Quercus faginea*). A large part of the burned area belonged to a protected area called the Alto Tajo Nature Park. The topography is rugged and the altitudes range between 1000 m and 1400 m. Rainfall in this region, which is evenly distributed through the year, averages 650 mm per year, and the average annual temperature is 10.2 °C (Viedma et al., 2015). Table 2 summarizes the main characteristics of the two wildfires.

Table 2
Summary of the two wildfires analyzed in this study

Fire name	Location	Burning dates	Burned area (ha)	Dominance of species	Elevation (m)
Madrid	Pantano de San Juan	26-27/June/2003	850	<i>Pino pinea</i> , <i>Quercus ilex</i>	450-1330
Guadalajara	Riba de Saelices	16-19/July/2005	13000	<i>Pino pinaster</i> , <i>Quercus pyrenaica</i> , <i>Quercus faginea</i>	1000-1400

Field data

Field-based assessment of burn severity was done according to the standard protocol of the Geometrically structured Composite Burn Index (GeoCBI), as proposed by De Santis and Chuvieco (2009). This index takes into account the fraction of coverage (FCOV) of each stratum used to compute the original CBI (Key and Benson, 2006), as well as the changes in the leaf area index (LAI) (De Santis and Chuvieco, 2009). GeoCBI is defined as:

$$GeoCBI = \frac{\sum_{m_1}^{m_n} (CBI_m - FCOV_m)}{\sum_{m_1}^{m_n} FCOV_m} \quad (5)$$



Figure 1. Study area, fire perimeter, and field plots location: a) Madrid fire, and b) Guadalajara fire. Digital Elevation Models and Administrative Maps used as background, the fire perimeters were obtained from Landsat data processing as explained in Section 2.8.

Where m refers to each vegetation stratum and n is the number of strata. For the calculation of the GeoCBI each stratum is weighted by its FCOV value except for substrate, and the percentage of changes in the LAI is estimated for three strata (tall shrubs/saplings, understory trees, and canopy trees). Finally, the amount of new sprouts is added to the original estimation since it can significantly modify background reflectance; as a result, GeoCBI assigns a burn severity level (unburned, low, moderate, high) to each plot according to its final score (a number between 0.0 and 3.0), as stated in the protocol designed by De Santis and Chuvieco (2009).

Field plot locations were selected via stratified random sampling. Burn severity (derived from previous field trips), forest cover (derived from ancillary cartography and ortho-photographs), and accessibility determined the plot locations. GeoCBI field measurements were sampled in a maximal interval of twenty-five days after ignition date. And according to the requirement of fitting of Landsat spatial resolution (Key and Benson, 2006; Veraverbeke *et al.*, 2010; Henry, 2008 and Arnett *et al.*, 2015), the plots size was of 30 m by 30 m, and were located in fairly homogenous

severity patches of 90 m by 90 m. Homogeneity assessment, which was performed on field by visual analysis of the surroundings, requires certain degree of personal training. Individual coordinates of the plot centers were captured with a hand-held Global Positioning System device (Garmin GPS 12); getting a planimetric accuracy of 5 to 15 meters. Additionally, we took digital photos from the center of each plot to the four cardinal directions in order to record vegetation structure, soil condition and additional information.

Field data consisted of 61 plots for the Madrid fire, and 129 plots for the Guadalajara fire. In the first case, 11 out of 61 were collected in unburned areas outside the limits of the fire perimeter. In the second case, 26 out of 129 plots belonged to the unburned category (figure 1 shows plot locations). Afterwards, we divided field data into two groups: 80% of the plots for training purposes, and the remaining 20% for validation. Selection for training and validation was random within each of the four burn severity levels (unburned, low, moderate, high).

Remotely sensed data

Four Landsat images were selected according to their availability and cloud coverage. For the Madrid fire, we selected a Landsat 7 Enhanced Thematic Mapper Plus (ETM+) image (path 201, row 32), corresponding to June 10, 2003 (pre-fire), and a Landsat 5 Thematic Mapper (TM) image corresponding to July 6, 2003 (post-fire). For the Guadalajara fire, we selected a Landsat 7 ETM+ image (path 200, row 32), corresponding to June 10, 2005 (pre-fire), and a Landsat 5 TM image corresponding to August 5, 2005 (post-fire). Table 3 shows a summary.

Imagery was downloaded either from the GloVis server (</http://earthexplorer.usgs.gov/>) of the United States Geological Survey (USGS), or from the Earth Science Data Interface (ESDI) server (</http://glcfapp.glc.f.umd.edu:8080/esdi/>) of the University of Maryland. We selected the Level 1T product (Standard Terrain Correction), which is radiometrically calibrated and ortho-rectified. Afterwards, we further process Landsat data for atmospheric and topographic correction, as described latter in this paper.

Table 3
Summary of remotely sensed data used in this study.

<i>Fire name</i>	<i>Burning dates</i>	<i>Landsat Path/Row</i>	<i>Pre-fire date and sensor</i>	<i>Post-fire date and sensor</i>
Madrid	26-27/June/2003	201/32	10/June/2003 Landsat 7 ETM+	06/July/2003 Landsat 5 TM
Guadalajara	16-19/July/2005	200/32	10/June/2005 Landsat 7 ETM+	05/August/2005 Landsat 5 TM

Workflow

The methodology goes as follows (Figure 2): imagery pre-processing (Section 2.5), spectral index calculation (Section 2.6), spectral separability analysis (Section 2.7), burn severity classification (Section 2.8), and accuracy assessment (Section 2.9).

After pre-processing ETM+ and TM pre- and post-fire images, six spectral indices were calculated. Then, we compared the capability of the different spectral indices to discriminate between different burn severity levels using field data. The best index was used to perform two classification methods: regression models and MLE. We trained both classification methods using 80% of the field plots; and the remaining 20%, to perform an accuracy assessment by means of a matrix error and the Kappa coefficient. As stated before, selection for training and validation was random within each of the four field-calculated burn severity levels (unburned, low, moderate, and high).

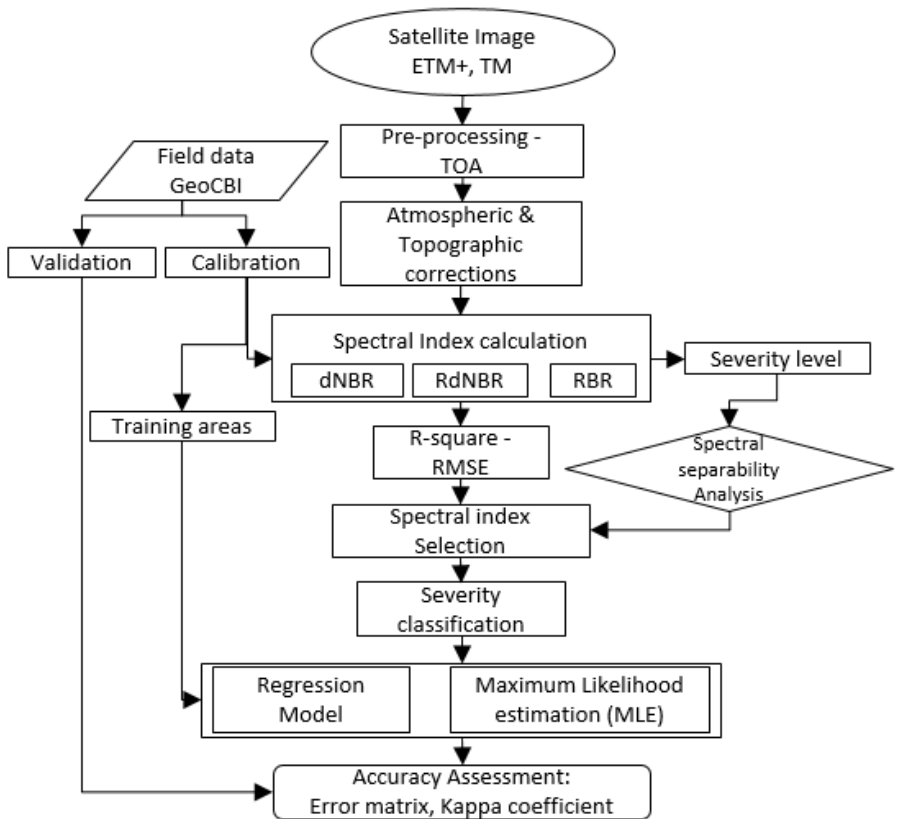


Figure 2. Workflow.

Imagery pre-processing

Pre-processing of remotely sensed data included geometric accuracy check, radiance into reflectance conversion, subsetting of the scene, and topographic and atmospheric correction. Landsat images were Level L1T, which had been radiometrically corrected and ortho-rectified (WGS84 – UTM coordinate system, the study area is located in Zone 30 North) using the Shuttle Radar Topographic Mission (SRTM) 30 m pixel size Digital Elevation Model (DEM).

Temporal analysis between pre- and post-fire images requires good spatial and spectral consistency between datasets. We evaluated the spatial coherence between scenes using the Root Mean Square Error (RMSE) of the metadata, which involved the use of 213 pairs of coordinates (ground control points). Atmospheric and topographic correction aims at providing good spectral coherence between scenes. Atmospheric correction is a critical step in image processing, especially when the objectives of the study are based on the analysis of spectral indices, the use of different sensors, or in multi-temporal analysis (Chuvieco, 2009; Said *et al.*, 2015 and Hantson and Chuvieco, 2011). This correction consists of the conversion of measured radiances above the atmosphere (Top Of Atmosphere, TOA) to surface reflectances (Bottom Of Atmosphere, BOA).

In this study, we used the ATCOR atmospheric correction model included in the GEOMATICA PCI-2015 software (Richter, 2007). This model calculates reflectance values at ground level based on the input image metadata, eliminating atmospheric effects in satellite images depending on different atmospheric conditions, aerosol types and water vapor. In addition, the spectral response of more or less illuminated areas is homogenized depending on the relief (topographic correction) and the effect of bidirectional reflectivity (BRDF) (Richter, 2007). Surface reflectance was calculated assuming complete solar illumination, that is to say, considering both the direct (E_{dir}) and the diffuse (E_{dif}) components (Flood *et al.*, 2013):

$$\rho_i(x, y) = \frac{\pi(d^2\{c_0(i)+c_1(i)DN_i(x,y)\}-L_{p,i}}{\tau_i\{E_{dir,i}+E_{dif,i}\}} \quad (6)$$

Where, i represents the spectral band, DN is the digital number of a pixel, L_p is the atmospheric radiance, τ is the atmospheric transmittance (from sensor to Earth), d is the relative Earth – Sun distance in astronomical units for the day of image acquisition, and c_0 and c_1 are the sensor calibration coefficients (offset and gain).

Spectral indices calculation

Burn severity assessment clearly benefits from the analysis of spectral indices, particularly if Landsat data is used (Meng *et al.*, 2017; Arnett *et al.*, 2015; Holden *et al.*, 2010 and Veraverbeke *et al.*, 2011). Some of these spectral indices are vegetation

indices; however, most of them were specifically design to detect burn severity, like the NBR index, that integrates the bands (NIR and SWIR) that respond most, but in opposite ways, to burning effects. Besides, many burn severity indices have been derived from the Normalized Burn Ratio. In this study, we calculated six spectral indices using the pre-processed Landsat bands. Some of them, like NDVI and NBR, were single-date. The others were multi-date, that is to say, they involved the use of pre- and post-fire imagery. Table 4 summarizes the spectral indices used in this study.

Table 4
Spectral indices used for burn severity assessment

<i>Spectral index</i>	<i>Equation*</i>	<i>Reference</i>
Normalized Difference Vegetation Index	$NDVI = \frac{\rho_{NIR} - \rho_{RED}}{\rho_{NIR} + \rho_{RED}}$	Tucker (1979)
Differenced NDVI	$dNDVI = NDVI_{PRE-FIRE} - NDVI_{POST-FIRE}$	Schepers <i>et al.</i> (2014) and Escuin <i>et al.</i> (2008)
Normalized Burn Ratio	$NBR = \frac{\rho_4 - \rho_7}{\rho_4 + \rho_7}$	Key and Benson (2006)
Differenced Normalized Burn Ratio	$dNBR = NBR_{PRE-FIRE} - NBR_{POST-FIRE}$	Key and Benson (2006)
Relative Differenced Normalized Burn Ratio	$RdNBR = \frac{NBR_{PRE-FIRE} - NBR_{POST-FIRE}}{\sqrt{ABS(NBR_{PRE-FIRE} / 1000)}}$	Miller and Thode (2007)
Relativized burn ratio	$RBR = \frac{dNBR}{NBR_{PRE-FIRE} + 1.001}$	Parks <i>et al.</i> (2014)

*NBR is particularly designed for Landsat TM bands 4 (NIR) and 7 (SWIR).

RdNBR and RBR have been used previously as adjusted indices for bare ground and pre-fire vegetation conditions, and they were proved to improve burn severity estimations (Miller and Quayle, 2015; Miller and Thode, 2007 and Parks *et al.*, 2014). We expected them to improve our estimates, through the adjustment of the effect that

has the increased bare ground within the burned areas as a result of the fire-caused canopy loss.

Spectral separability analysis

We calculated a spectral separability index (M), as formulated in Equation (7), in order to evaluate the spectral indices differentiating capability of field-based burn severity levels, as a proxy for assessing the capacity of the spectral indices for discriminating burned severity effects from Landsat imagery. In particular, we used M with two objectives: (i) to both estimate the capability to discriminate between burned and unburned pixels and, (ii) the capability to discriminate among burn severity levels. The spectral separability index, also called normalized distance separability index, has been frequently used to assess the degree of discrimination of both broadband and imaging spectroscopy sensors in fire ecology studies (Meng *et al.*, 2017; Schepers *et al.*, 2014; Harris *et al.*, 2011; Pereira *et al.*, 1999 and Pleniou and Koutsias, 2013). The spectral separability index (M) is calculated as:

$$M = \frac{|\mu_b - \mu_a|}{\sigma_b - \sigma_a} \quad (7)$$

Where, μ_b and μ_a are the mean values of the considered spectral index of burned and unburned classes (or for two particular burn severity classes), and σ_b and σ_a are the corresponding standard deviations. Values of the M index higher than 1 ($M > 1$) indicate good separability (better discrimination), while values lower than 1 ($M < 1$) represent a large degree of histogram overlapping between severity classes. Since the approach of this study was to find the best burn severity estimates, the sensitivity analysis was performed in order to choose the most reliable index in relation to the four field-based severity levels. For the calculation of M, we overlaid the geo-referenced field plots together with the spectral indices. Field-based burn severity data (GeoCBI) was used to assign a severity class to the corresponding pixel value. We used these assignments to calculate the separability index; additionally, we also calculated the coefficient of determination (R^2) between GeoCBI and the six spectral indices.

Burn severity classification

Both, the spectral separability index, and the coefficient of determination between GeoCBI field data and each of the six spectral indices (NDVI, dNDVI, NBR, dNBR, RdNBR, RBR), led us to the selection of the most appropriate spectral index. The latter would be the one on which the two classification methods (regression analysis and MLE) would be applied.

The first classification method was a regression model. These models evaluate the performance of the satellite-derived spectral indices as continuous metrics of burn

severity, and test their correspondence to GeoCBI using regression equations (Miller and Quayle, 2015). In previous studies, simple linear and various non-linear regression models have been used to predict the relationship between CBI or GeoCBI (field data), and dNBR or RdNBR (satellite data) (Quintano *et al.*, 2017; Miller and Thode, 2007; Meng *et al.*, 2017 and Cansler and McKenzie, 2012). To facilitate the comparison between our results and other studies (Miller and Quayle, 2015; Cansler and McKenzie, 2012 and Stambaugh *et al.*, 2015), we chose to use a linear regression model:

$$Y = a * (Xs) + b \tag{8}$$

Where, Y is the satellite-derived metric being evaluated (spectral index), a is the gain, Xs is the GeoCBI index, and b is the offset value of the model. The goodness of fit of the regression model was evaluated through the coefficient of determination (R^2) (Parks *et al.*, 2014). We estimated two linear regression models, one for each fire (Madrid and Guadalajara), using in both cases 80% of the plots for training and 20% for validation. Next, we evaluated each remotely sensed burn severity classification metrics relative to GeoCBI. Four distinct categories are commonly used when mapping burn severity: unburned ($0.0 \leq \text{GeoCBI} < 0.1$), low ($0.1 \leq \text{GeoCBI} \leq 1.25$), moderate ($1.25 < \text{GeoCBI} \leq 2.25$), and high ($2.25 < \text{GeoCBI} \leq 3.0$) (Key and Benson, 2006 and De Santis and Chuvieco, 2009). We calculated the values of each burn severity metric (spectral index) that corresponded to every GeoCBI threshold value (0.0, 0.1, 1.25, 2.25 and 3.0) to define burn severity metric thresholds for every class, using the linear regression model described in Equation (8).

The second classification method was a Maximum Likelihood Estimation (MLE). Other studies have already used supervised classifiers for mapping severity (Henry, 2008 and Turner *et al.*, 1994). Mitri and Gitas (2006) were able to increase up to 83% overall accuracy of burn severity mapping using object-based supervised classification. In this case, we hypothesized they could had improved the classification accuracy through field data (GeoCBI). Among the conventional methods of classifying multispectral imagery, the MLE is the most widely used algorithm for pixel-based classification. MLE has shown to give the best results for classification of remotely sensed natural resource data among the parametric classifying algorithms (Yang *et al.*, 2006). As is well known, the MLE allocates a pixel to the class with which it has the highest probability of correspondence (Ahmad and Quegan, 2013), where the likelihood $L_i(x)$ that a pixel x is a member of class (i) is given by:

$$L_i(x) = (2\pi)^{-n/2} * |V_i|^{-1/2} e^{-y/2} \tag{9}$$

Where, V_i is the covariance matrix of class i , n is the number of spectral bands, and y is the Mahalanobis distance. The rescaling of $L_i(x)$ between 0 and 1 yields the

MLE a posteriori probability $P_i(x)$ (Dean and Smith, 2003). Field training sites were chosen based upon previous knowledge of the severity class each plot belonged to. Although it is possible to generate more classes during the classification process, the four severity classes were kept for training purposes due to the spectral disparities between them (e.g. moderate and high). Besides, it was also important to distinguish between burned from unburned areas, so field plots outside of the fire perimeter were included in the training procedure.

Fire perimeters were constructed based on our own burn severity maps, and assessed using official data from the Fire Management Office in Madrid (CAM, 2005), as well as the results of De Santis and Chuvieco (De Santis and Chuvieco 2009) for the Guadalajara fire. In particular, fire perimeters were created based on the burn severity maps developed from pre-fire NBR and dNBR (Kolden and Weisberg, 2007 and Finco *et al.*, 2012).

Accuracy assesment

We assessed the regression models by using the coefficient of determination, and discretized-into-burn-severity-classes regression results were evaluated using confusion matrices; furthermore, we also evaluated the MLE using the latter technique. Confusion matrices produce several metrics: overall accuracy, producers and users accuracy, and the Kappa coefficient. Producer's accuracy (omission error) is an evaluation of when a field plot is not assigned to the correct category. User's accuracy (commission error) is an evaluation of when a field plot is assigned to the wrong category. The Kappa coefficient is a measure of the difference between the actual agreement between reference data and classified data, and the chance agreement between the reference data and randomly classified data. Confusion matrices allowed the comparison between classification methods (regression models and MLE), and between fire sites (Madrid and Guadalajara).

We calculated overall accuracy as the percentage of field plots rightly classified into each burn severity class relative to its GeoCBI value, using the validation group of field plots (20% in each case). The validation assessment was conducted for each fire (Madrid and Guadalajara) individually. Our evaluation of the best classification method involves: (i) the overall classification accuracy of the field data, and (ii) the classification accuracy of each burn severity level. In this process, we used the GeoCBI thresholds that are most common, based on ecological conditions determined by the CBI and GeoCBI scale, in order to allow a more consistent interpretation of classes across multiple fires. These GeoCBI thresholds also facilitate comparison with previous studies (Miller and Thode, 2007 and Cansler and McKenzie, 2012).

Results

GeoCBI field data

Results from fieldwork revealed (in both cases Madrid and Guadalajara) that most of the plots belonged to the high severity class. In the case of Madrid, 56% of the field plots belonged to the high severity class, 42% to the moderate, and just 2% to the low severity class. The average GeoCBI for the Madrid fire was 2.67, thus classifying this fire into the high severity class. In the case of Guadalajara, 90.3% of the field plots belonged to the high severity class, 7.7% to the moderate, and just 2% to the low severity class. The average GeoCBI for the Guadalajara fire was 2.85, thus this fire was also assigned to the high severity class. Figure 3 shows the distribution of the GeoCBI field results.

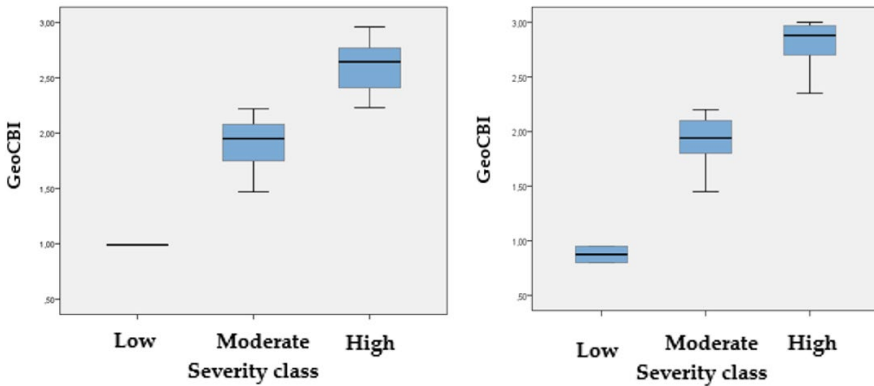


Figure 3. GeoCBI distribution: (a) Boxplots for Madrid fire, and (b) Boxplots for Guadalajara fire. Boxes represent the inter-quartile range, whiskers extend to the 5th and 95th percentiles, horizontal lines represent the median of field plots.

Relationship between GeoCBI and the spectral indices

GeoCBI field data and the six spectral indices showed a relatively high degree of correlation, especially in the Madrid fire. Figure 4 shows some examples of GeoCBI field data and the corresponding RBR spectral values and locations. Table 5 shows the coefficient of determination (R^2), the averaged by spectral index coefficient of determination, the adjusted R^2 and the Root Mean Squared Error (RMSE). Although differences between spectral indices were not very large, RdNBR and RBR performed slightly better than the others did. The best R^2 -adjusted values were for the RBR and RdNBR indices, with values of 0.827 and 0.822, respectively. These results indicate better performance of RBR and RdNBR, higher correspondence between

GeoCBI and these two spectral indices, and better capacity for explaining the variance in burn severity when compared to the rest of spectral indices.

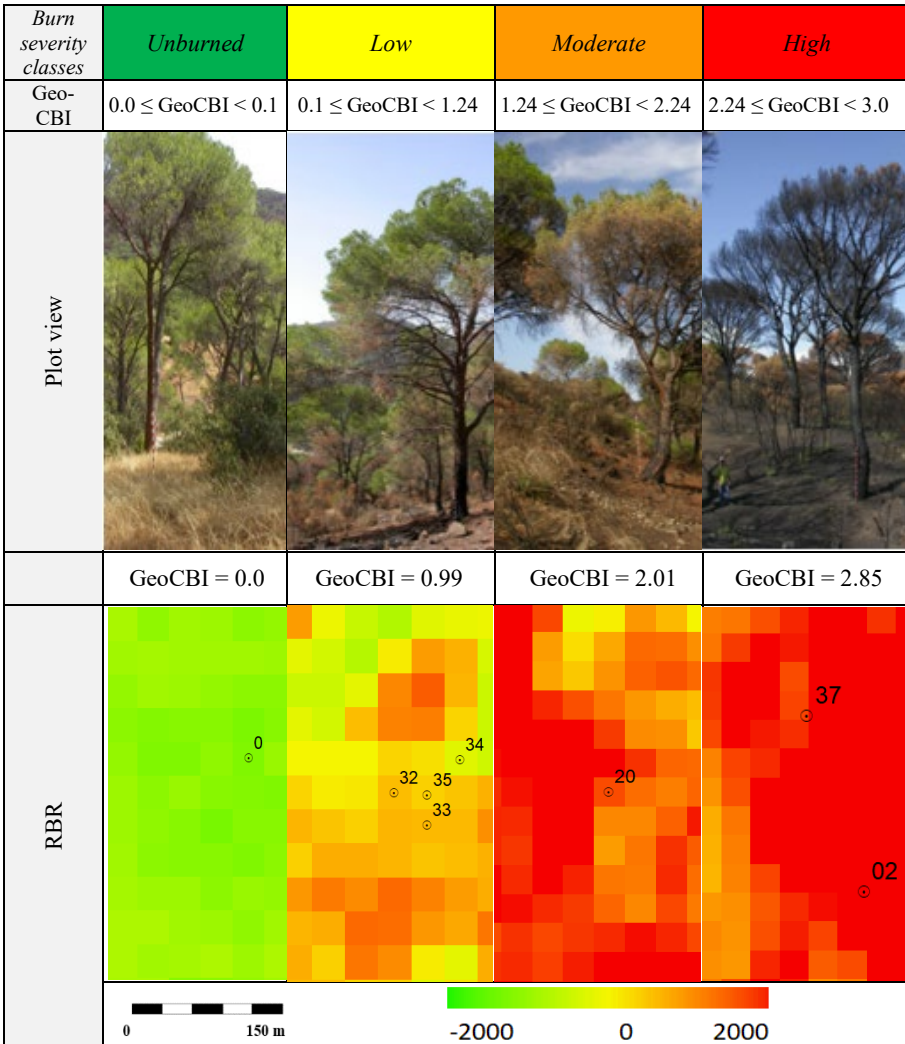


Figure 4. GeoCBI field plots (Madrid fire): burn severity classes, GeoCBI intervals, plot views, GeoCBI values for those plots shown on the pictures, and RBR index.

Table 5
Variance explained and overall correlation between GeoCBI and the six spectral indices

<i>Spectral Index</i>	<i>Fire name</i>	R^2	R^2 average	R^2 adjusted	<i>RMSE</i>
NDVI	Guadalajara	0.583	0.699	0.580	0.730
	Madrid	0.814		0.811	0.423
NBR	Guadalajara	0.596	0.697	0.593	0.719
	Madrid	0.798		0.794	0.441
dNDVI	Guadalajara	0.615	0.694	0.612	0.702
	Madrid	0.772		0.768	0.469
dNBR	Guadalajara	0.609	0.711	0.606	0.708
	Madrid	0.812		0.809	0.408
RdNBR	Guadalajara	0.627	0.725	0.624	0.691
	Madrid	0.822		0.820	0.413
RBR	Guadalajara	0.626	0.727	0.623	0.692
	Madrid	0.827		0.824	0.408

Figure 5 shows the correspondence between field data and satellite-derived information. These plots also show the distribution of GeoCBI field scores. For the Madrid fire GeoCBI severity values were more evenly distributed than for the Guadalajara fire. In the latter, most of the field-measured severity scores were of the high severity classes since it was a catastrophic fire. However, satellite response seemed to be not as fine as we would had expected, and showed a certain degree of signal saturation. According to Van Wagendonk *et al.* (2004), dNBR saturates when CBI scores are larger than 2.3, as it could had happen in our case. The way field and satellite data relate to each other in the Guadalajara fire made that this fire was more difficult to be modelled than the Madrid fire.

Spectral separability

Figure 6 shows the spectral signatures that corresponded to four field locations in the Madrid (a) and Guadalajara (b) fire, one for each burn severity class (unburned, low, moderate and high). Spectral data came from Landsat TM images (post-fire data). Spectral values were extracted from the pixel where the field plots were located. The spectral signatures of burned areas were compared between the two fires, in order to obtain a better understanding of their spectral behavior and potential discriminatory ability. Bands in the NIR (B4) and SWIR (B7) are highlighted in the graph since they

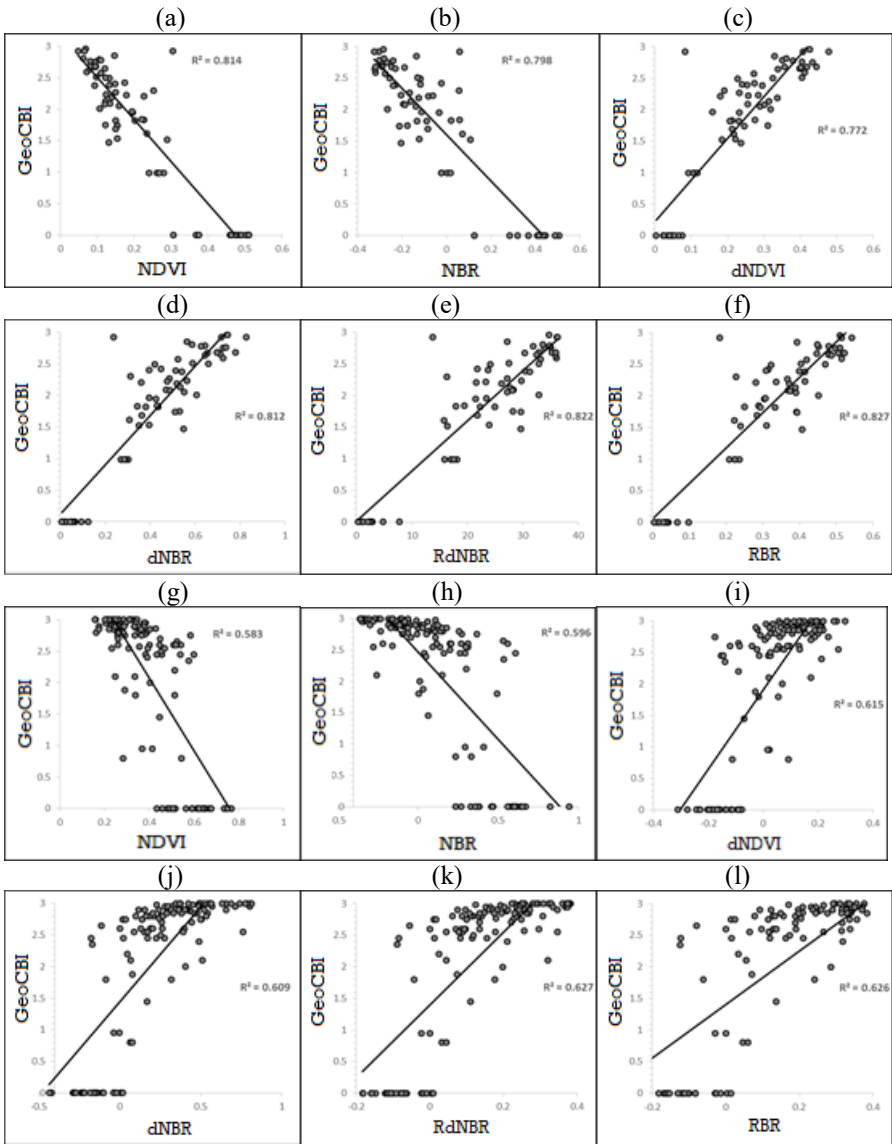


Figure 5. Scatter plots between observed burn severity GeoCBI values, and spectral indices. For the Madrid fire: (a) NDVI, (b) NBR, (c) dNDVI, (d) dNBR, (e) RdNBR, and (f) RBR, and for the Guadalajara fire: (g) NDVI, (h) NBR, (i) dNDVI, (j) dNBR, (k) RdNBR, and (l) RBR.

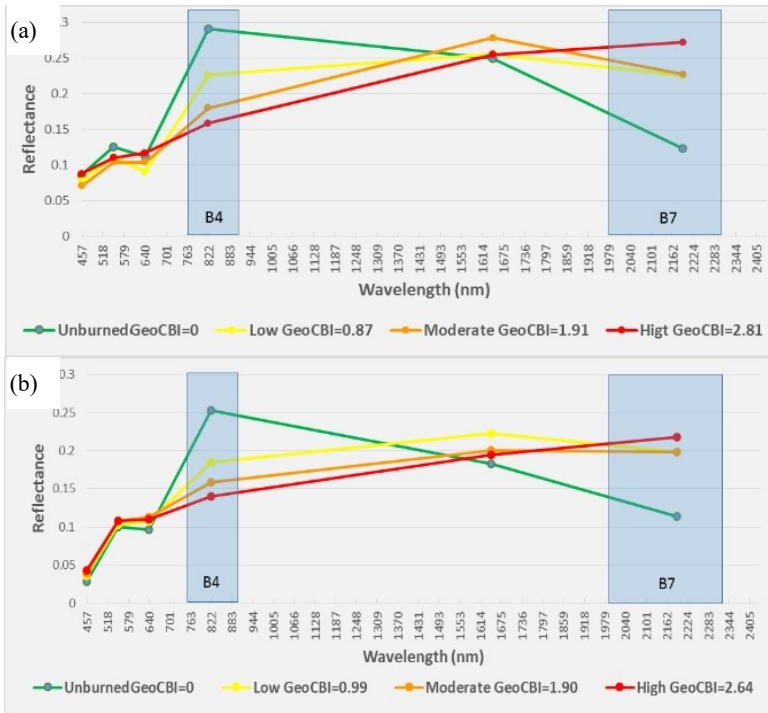


Figura 6. Spectral signature of the four burn severity classes according to Landsat TM channels: (a) Madrid fire and (b) Guadalajara fire. Spectral signature refers to four particular field plots, one per severity class.

Table 6
Spectral separability index (M) for each spectral index and fire site

Spectral index	Fire name	Separability index (M)	M average
NDVI	Guadalajara	0.707	1.338
	Madrid	1.968	
NBR	Guadalajara	0.922	1.386
	Madrid	1.850	
dNDVI	Guadalajara	0.871	1.614
	Madrid	2.356	
dNBR	Guadalajara	1.040	1.815
	Madrid	2.590	
RdNBR	Guadalajara	1.082	1.800
	Madrid	2.518	
RBR	Guadalajara	1.068	2.000
	Madrid	2.931	

showed the highest changes in spectral response, what is the reason why most of the burn severity spectral indices uses them. The discrimination capability of the NIR band is much higher than that of the visible channels, despite the low spectral distance between bare land and vegetation in the NIR, and the low spectral distance between bare land and burned areas in the SWIR. Among these, the NIR band (B4) showed the highest discrimination between severity levels, and between burned and unburned areas, followed by band 7 (SWIR), band 5 (SWIR) and band 3 (red).

Spectral index selection

Spectral index selection was based on the results from the two previous sections, that is to say, the relationship between field and satellite data, and the spectral separability analysis. In general, we found a high correlation for all the spectral indices in both study areas. In the case of the Madrid fire, the RBR showed the highest correlation with GeoCBI ($R^2= 0.827$) and the largest separability score ($M= 2.93$). In the case of Guadalajara, the best fit of R^2 was presented for the RdNBR and the RBR indices ($R^2= 0.627$ and 0.626 , respectively), being also the two indices that showed the greatest spectral separability ($M= 1.082$ and 1.068 , respectively). According to these results, RBR was selected for subsequent burn severity mapping as the best index for discrimination of severity.

Burn severity classifications

The RBR index, together with 80% of the field data, was used to carry out both classification burn severity methods proposed in this research: linear regression and MLE. Figure 7 shows the resulting maps along with the post-fire Landsat images used in this study. Although the detailed accuracy assessment is presented in the next section, results reached so far showed a relatively strong correlation based on the regression parameters of the RBR: in the Madrid fire, with a significant Pearson correlation of 0.897 and a RMSE of 0.440, and in the Guadalajara fire, with a Pearson correlation of 0.759 and a RMSE of 0.734. We also found that linear regression models tended to overestimate the unburned class, as well as to increment the number of pixels in the low and moderate burn severity classes versus the high severity ones.

The spatial heterogeneity within the burned area is clearly visible in both fires. All the burn severity maps (Figure 7) showed different levels of burn severity within the two study areas, and some small unburned or low-severity patches bordered by large moderate to high-severity areas. The spatial heterogeneity was higher in the Guadalajara fire. This fact might be due to a couple of reasons. Firstly, it was a high intensity and high fire and burn severity fire as one can conclude from the fieldwork (GeoCBI scores) and previous research (De Santis and Chuvieco, 2007, 2009). Secondly, the fire lasted several days and alternated intensive periods of burning (during the hot and dry daytimes) with less intensive burning phases (during nighttime).

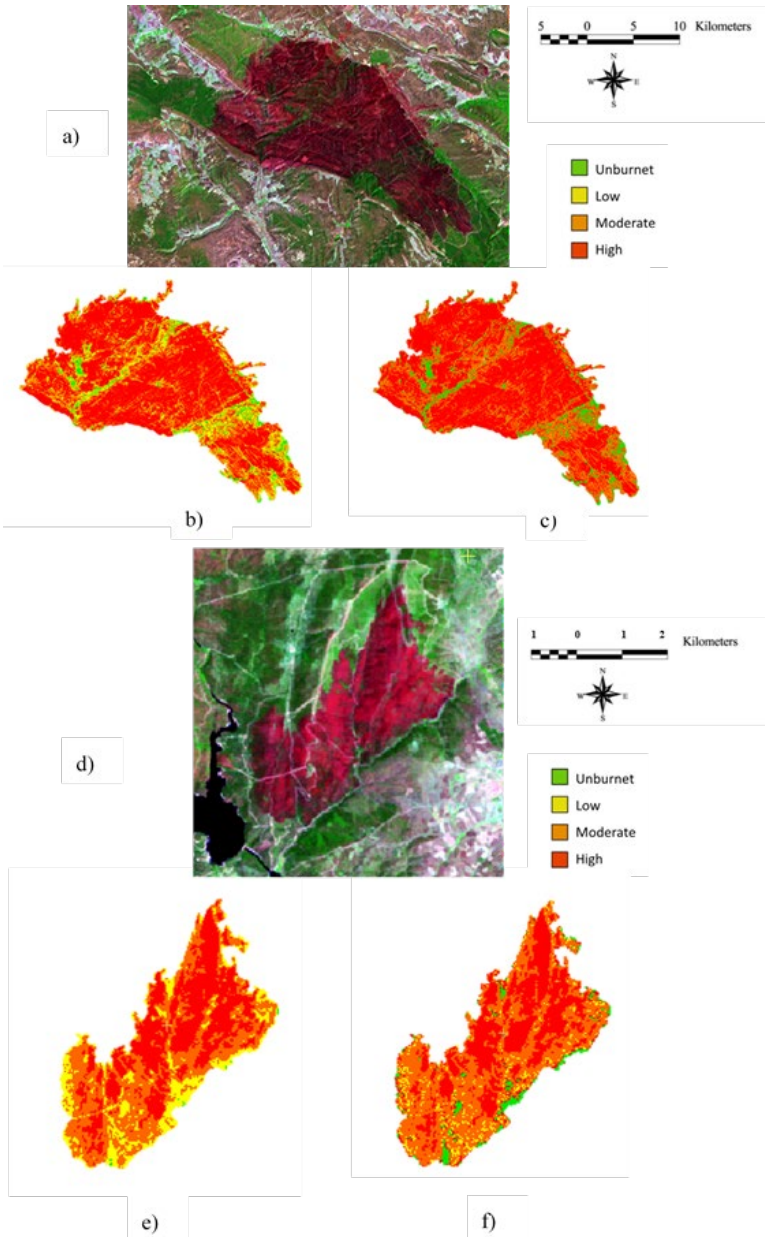


Figure 7. Burn severity mapping: a) Landsat TM (RGB 741), Guadalajara fire; b) Burn severity map by linear regression, Guadalajara fire; c) Burn severity map by MLE, Guadalajara fire; d) Landsat TM (RGB 741), Madrid fire; e) Burn severity map by linear regression, Madrid fire; f) Burn severity map by MLE, Madrid fire.

Accuracy Assesment

Overall classification accuracies for individual fires ranged from 58% (MLE, Guadalajara fire) to 92% (MLE, Madrid fire) (Table 7). When averaged among fires, the MLE classification method retrieved higher overall accuracy (75%) than the regression model (72.5%). Considering the Kappa coefficient, MLE classification method performed better than the regression models. Besides, when analyzing classification accuracies per class, we found that the accuracy of the classification in the lower and middle classes improved with the use of the MLE, in relation to the regression model technique. Which means that classification accuracy in the moderate and high severity classes decreased when the linear regression model was used, as opposed to the MLE model (Table 7). Classification accuracies among severity classes were significantly different, but indicated a general agreement between burn severity classifications and validation field plots. The increased classification accuracy in the low and moderate burn severity classes reflects differences between classification models, an effect due to the probabilistic classification of the MLE model in pixels where there is confusion between thresholds (Figure 8).

Table 7
Overall classification accuracy for classification methods using individual burn severity classes on RBR

Classification method	Fire name	Overall accuracy	Kappa	Kappa average	Classification accuracy (%)				
					Unburned	Low	Moderate	High	
Regression model	Guadalajara	60	0.38	0.58	User's	100	14	33	81
					Producer's	100	50	50	53
	Madrid	85	0.77		User's	00.0	33	100	100
					Producer's	00.0	100	100	100
MLE	Guadalajara	58	0.41	0.65	User's	67	00.0	20	100
					Producer's	100	00.0	100	41
	Madrid	92	0.88		User's	100	100	83	100
					Producer's	100	100	100	80

In order to understand the performance of the models in more detail, we extracted frequency distributions of RBR-based severity classes derived from the regression models for the Guadalajara and the Madrid fire, as shown in Figure 8. The histograms show that burned and unburned pixels were well separated and relatively easy to be discriminated, especially in the Madrid fire. However, the frequency distribution of

the burn severity classes (low, moderate, high) was superposed between levels, e.g. mean RBR value of certain class (red dash line in Figure 8) was within the range of an upper class, and vice versa.

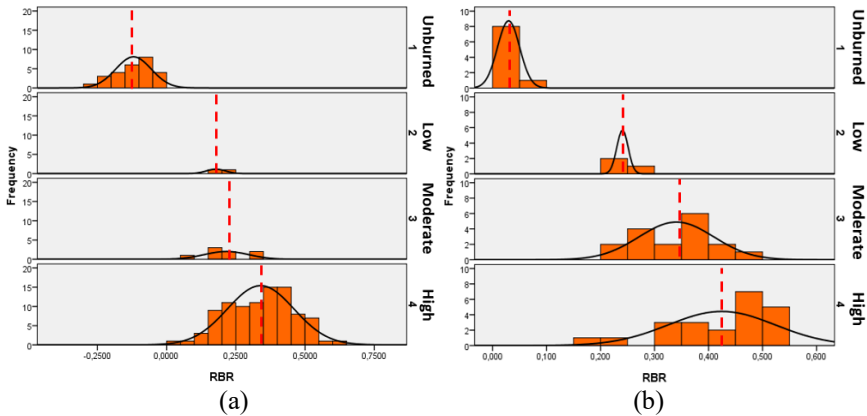


Figure 8. Frequency distributions of burn severity levels extracted pixels of RBR (regression models): (a) Guadalajara fire, and (b) Madrid fire. The vertical dash lines show a mean RBR value per class.

Discussion

Burn severity mapping is critical for the understanding of post-fire landscape changes and ecosystem resilience (San-Miguel *et al.*, 2013; Ariza, 2017; Arnett *et al.*, 2015 and Turner *et al.*, 1994), a situation that has led to an increase of studies that use moderate to high spatial resolution satellite sensors (Key and Benson, 2006; De Santis and Chuvieco, 2009 and Veraverbeke, 2010). The increased availability of better spatial resolution imagery (e.g. Landsat or Sentinel series) provides an important opportunity not only for mapping burn severity, but also for studying post-fire regeneration and successional effects (Montealegre *et al.*, 2014; Chuvieco, 2009; Key and Benson, 2006; De Santis and Chuvieco, 2009 and Finco *et al.*, 2012). In this study, we explore the correspondence between satellite data and field-based measures of burn severity with the objective of choosing the index that performs best. Additionally, we use field and satellite data to investigate the differences in the use of supervised classification through MLE versus regression models for burn severity mapping.

Overall, burn severity mapping at Landsat TM and ETM+ scales was consistent with GeoCBI field measurements. The good performance of the weighted version of the CBI, the GeoCBI, may be due to the fact that it measures field parameters (FCOV, LAI, new sprouts) that are more closely related to the post-fire reflectance of the plot (De Santis and Chuvieco, 2009; Meng *et al.*, 2017 and Cansler and McKenzie, 2012).

Our results are comparable to those other studies with similar characteristics in different territories —Canada, USA, Spain— (Cocke *et al.*, 2005; Holden *et al.*, 2005; Miller and Quayle, 2015; De Santis and Chuvieco, 2009 and Cansler and McKenzie, 2012). Additionally, the correspondence between the newer indices (RBR, RdNBR) and GeoCBI field-based measures of burn severity indicates an improvement over more classical burn and vegetation indices (dNBR, NBR, dNDVI, NDVI), as it was found in previous research (Parks *et al.*, 2014); none the less, we did find important differences between the two fires of the study.

The correspondence between satellite and field data was stronger in the Madrid fire. GeoCBI measures depend on several factors, such as the ecosystem type, the type of sampling, the number of samples and the severity intervals. Concerning the two first factors (ecosystem and sampling types) there were not great differences between the two wildfires. The number of samples per unit area was much larger in the Madrid fire, a simple fact that led to count on more significant field information; besides, the Guadalajara fire was much bigger and more severe. However, it seems that the main difficulty was due to the severity intervals. The weaker correspondence between satellite and field data in the Guadalajara fire was because 90% of the field plots belonged to the high severity class, according to the severity intervals previously defined. The high severity class in this study area was scattered, leading to lower R^2 and separability values. This issue could have been solved using more adequate severity intervals, at the expense of making this research less comparable.

The findings of our investigation can be explained, at least partially, by the spectral properties of the severity ratings of the burn according to the severity classes. Previous studies of Cansler and McKenzie (2012) determined how robust were some spectral indices when applied to new regions. Additionally, our study identified the spectral index that performs the best in severity discrimination, the RBR, and the sensitivity of spectral reflectance values with respect to different levels of burn severity. After assessing the separability of six spectral indices for the discrimination of burning effects in Mediterranean ecosystems, we found that the spectral indices using NIR and SWIR bands (NBR, dNBR, RdNBR, RBR) performed better than those using the NIR bands (NDVI, dNDVI), as described previously (Miller and Quayle, 2015; Miller and Thode, 2007 and Meng *et al.*, 2017). This is coherent with the higher capability of the SWIR (TM B7) in comparison with the red band (TM B3) for the discrimination between severity levels, and between burned and unburned areas (Figure 6).

In their study on the evaluation of spectral indices for burned area discrimination using MODIS/ASTER (MASTER) airborne simulated data, Veraverbeke *et al.* (2011) demonstrated that the highest sensitivity of the long SWIR region (1 900-2 500 nm) was between the 2 310 and 2 360 nm interval. In our case, we observed that the sensitivity in the VIS region (450-690 nm) was very poor, while the SWIR

region (2 080-2 350 nm) showed moderate discriminatory power. However, the highest spectral separability between severity classes was observed in the spectral region of NIR (760-900 nm). This finding is consistent with the studies by Schepers *et al.* (2014) and Arnett *et al.* (2015), who used high resolution imagery for assessing burn effects in heathlands of Europe, and in mixed forests of western Canada, respectively.

In general terms, the spectral indices that were designed to account for the reflectance from the canopy affected by burn severity and the pre-fire conditions (RBR, RdNBR, dNBR), tended to show higher separability (Table 7), as preceding studies have shown (Miller and Quayle, 2015; Miller and Thode, 2007 and Meng *et al.*, 2017). However, like in the Parks *et al.* (2014) study, the RBR was the index that best corresponded to field-based burn severity measurements, and had the highest classification accuracy compared to dNBR and RdNBR when discriminating different levels of severity. The RBR index, followed by RdNBR, offered better results than dNBR due to their adjustment to bare ground and pre-fire vegetation conditions (Miller and Quayle, 2015; Miller and Thode, 2007 and Parks *et al.*, 2014). These differences, however, were especially noticeable in the Madrid fire.

Based on the error matrices parameters, the approach of the supervised classification by MLE, with an overall average accuracy of 76%, slightly improves the linear regression models approach, with an overall accuracy of 75%. The gain is low when we compared averaged values. However, it is noticeable in the Madrid fire (in the overall accuracy and the Kappa coefficient), and in the moderate and high classes of the Guadalajara fire. Therefore, our evaluation of the resulting burn severity maps indicate that the MLE approach can be used for forest burn severity mapping at the spatial scales of Landsat TM and ETM+ data with reasonable accuracy (Table 7), especially for forest fires similar to the Madrid one. The weaker results in Guadalajara could be explained by the severe characteristics of this wildfire and the massive concentration of scattered data in a single severity class. User and producer accuracies for low and moderate severity categories were poor for two reasons (Table 7): firstly, low and moderate classes had much less plots than the other categories, especially in the Guadalajara fire, it is important to consider the number of plots evaluated per category, as well as the accuracy of the registration of imagery (Miller and Quayle, 2015). Secondly, the location of the plots could have not been optimal in relation to the study area; additionally, another problem arises from the fact that plots do not align perfectly with the 30 m satellite pixel. The way fire behaves from surface to crown within 30 m according to Miller & Quayle (2015) and Safford *et al.* (2012), is also a factor, since fire effects can vary considerably within a pixel, resulting in less precise evaluation of the burn severity in pixels adjacent to the limits of the fire perimeter, and the severity classes.

Finally, Figure 7 indicates that the heterogeneity of burn severity patterns was high in the two fires. Future research could determine the relationship between the

degrees of severity and the changes induced by fire in the landscape, in order to provide information to post-fire management tasks and restoration programs, but also to provide information on changes in plant function associated with fire impacts (Smith *et al.*, 2016 and Morgan *et al.*, 2014).

Conclusions

GeoCBI field data and the Landsat-based spectral indices were used in this study to generate burn severity maps in Mediterranean ecosystems using two classification algorithms: linear regression models and supervised classification by maximum likelihood estimation (MLE). GeoCBI field data adjust moderately to the spectral indices, being very dependent on the ecosystem type, the type of sampling, the number of samples and the severity intervals. Among the analyzed six spectral indices, the Relativized Burn Ratio (RBR) and the Relative Differenced Normalized Burn Ratio (RdNBR) showed the best correspondence between satellite and field-based measures of burn severity. The RBR index was preferred in this study because it showed better spectral separability and consistency across regions. The supervised classification by MLE method, which used GeoCBI field data and the RBR index, improved the performance of the classical regression models for burn severity mapping. Differences between study areas might be due to the severity characteristics of the two wildfires. Since the Guadalajara fire was more severe than the Madrid fire, spectral indices tended to saturate more, a fact that affected the capacity of the spectral indices and the algorithms to model burn severity in a reliable manner.

Bibliography

- Ahmad, A. and Quegan, S. (2013). "Analysis of Maximum Likelihood classification technique on Landsat 5 TM satellite data of tropical land covers", Proceedings - 2012 IEEE International Conference on Control System, Computing and Engineering, ICCSCE 2012, (November), pp. 280-285. <<https://doi.org/10.1109/ICCSCE.2012.6487156>>.
- Amraoui, M.; Liberato, M.L.R.; Calado, T.J.; Dacamara, C.C.; Coelho, L.P.; Trigo, R.M. and Gouveia, C.M. (2013). "Fire activity over Mediterranean Europe based on information from Meteosat-8", *For. Ecol. Manage.*, no. 294, pp. 62-75. DOI: 10.1016/j.foreco.2012.08.032.
- Ariza, A. (2017). *Análisis de los cambios en la estructura del paisaje por incendios forestales mediante teledetección*, Alcalá de Henares.
- Arnett, J.T.T.R.; Coops, N.C.; Daniels, L.D. and Falls, R.W. (2015). "Detecting forest damage after a low-severity fire using remote sensing at multiple scales", *Int. J. Appl. Earth Obs. Geoinf.*, no. 35, pp. 239-246. DOI: 10.1016/j.jag.2014.09.013.
- CAM (2005). *Replacación de la superficie afectada por el incendio del 26 de junio de 2003 en los Montes del C.U.P., no. 48, no. 50 y no. 54 de la Comarca X-San Martín de Valdeiglesias*, Madrid, 2005.

- Cansler, C.A. and McKenzie, D. (2012). "How robust are burn severity indices when applied in a new region? Evaluation of alternate field-based and remote-sensing methods", *Remote Sens.*, no. 4, pp. 456-483. DOI: 10.3390/rs4020456.
- Chafer, C.J.; Noonan, M. and Macnaught, E. (2004). "The post-fire measurement of fire severity and intensity in the Christmas 2001 Sydney wildfires", *Int. J. Wildl. Fire*, no. 13, pp. 227-240. DOI: 10.1071/WF03041.
- Chuvieco, E. (2009). *Earth observation of wildland fires in mediterranean ecosystems*.
- Cocke, A.E. and Fulé, P.Z. (2005). "Crouse, J. E. Comparison of burn severity assessments using Differenced Normalized Burn Ratio and ground data", *Int. J. Wildl. Fire*, no. 14, p. 189. DOI: 10.1071/WF04010.
- Collins, R.D.; de Neufville, R.; Claro, J.; Oliveira, T. and Pacheco, A.P. (2013). "Forest fire management to avoid unintended consequences: A case study of Portugal using system dynamics", *J. Environ. Manage*, no. 130, pp. 1-9. DOI: 10.1016/j.jenvman.2013.08.033.
- De Santis, A. and Chuvieco, E. (2007). "Burn severity estimation from remotely sensed data: Performance of simulation versus empirical models", *Remote Sens. Environ*, no. 108, pp. 422-435. DOI:10.1016/J.RSE.2006.11.022.
- (2009). "GeoCBI: A modified version of the Composite Burn Index for the initial assessment of the short-term burn severity from remotely sensed data", *Remote Sens. Environ*", no. 113, pp. 554-562. DOI: 10.1016/j.rse.2008.10.011.
- Dean, A.M. and Smith, G.M. (2003). "An evaluation of per-parcel land cover mapping using maximum likelihood class probabilities", *Int. J. Remote Sens.*, no. 24, pp. 2905-2920. DOI: 10.1080/01431160210155910.
- Eleazar, M.J.; Enriquez, E.; Gallar, J.J.; Jemes, V.; López, M.; Mateo, M.L.; Muñoz, A. and Parra, P.J. (2013). *Los incendios forestales en España. Decenio 2001-2010*, Madrid.
- Escuin, S.; Navarro, R. and Fernández, P. (2008). "Fire severity assessment by using NBR (Normalized Burn Ratio) and NDVI (Normalized Difference Vegetation Index) derived from LANDSAT TM/ETM images", *Int. J. Remote Sens.*, no. 29, pp. 1053-1073. DOI: 10.1080/01431160701281072.
- Finco, M.; Quayle, B.; Zhang, Y.; Lecker, J.; Megown, K.A. and Brewer, C.K. (2012). "Monitoring Trends and Burn Severity (MTBS): Monitoring wildfire activity for the past quarter century using LANDSAT data. Mov. from Status to Trends For", *Invent. Anal. Symp.*, pp. 222-228.
- Flood, N., Danaher, T., Gill, T. and Gillingham, S. (2013). "An operational scheme for deriving standardised surface reflectance from landsat TM/ETM+ and SPOT HRG imagery for eastern Australia", *Remote Sensing*, 5(1), pp. 83-109. <<https://doi.org/10.3390/rs5010083>>.
- Hantson, S. and Chuvieco, E. (2011). "Evaluation of different topographic correction methods for landsat imagery", *Int. J. Appl. Earth Obs. Geoinf.*, no. 13, pp. 691-700. DOI: 10.1016/j.jag.2011.05.001.

- Harris, S.; Veraverbeke, S. and Hook, S. (2011). "Evaluating spectral indices for assessing fire severity in chaparral ecosystems (Southern California) using modis/aster (MASTER) airborne simulator data", *Remote Sens.*, no. 3, pp. 02403-2419. DOI: 10.3390/rs3112403.
- Henry, M.C. (2008). "Comparison of Single and Multi-date Landsat Data for Mapping Wildfire Scars in Ocala National Forest, Florida. Photogramm", *Eng. Remote Sensing*, no. 74, pp. 881-891.
- Holden, Z.A.; Morgan, P.; Smith, A.M.S. and Vierling, L. (2010). "Beyond Landsat: A comparison of four satellite sensors for detecting burn severity in ponderosa pine forests of the Gila Wilderness, NM, USA", *Int. J. Wildl. Fire*, no. 19, pp. 449-458. DOI: 10.1071/WF07106.
- Holden, Z.A.; Smith, A.M.S.; Morgan, P.; Rollins, M.G. and Gessler, P.E. (2005). "Evaluation of novel thermally enhanced spectral indices for mapping fire perimeters and comparisons with fire atlas data", *Int. J. Remote Sens.*, no. 26, pp. 4801-4808. DOI: 10.1080/01431160500239008.
- Hoscilo, A.; Tansey, K.J. and Page, S.E. (2013). "Post-fire vegetation response as a proxy to quantify the magnitude of burn severity in tropical peatland", *Int. J. Remote Sens.*, no. 34, pp. 412-433. DOI: 10.1080/01431161.2012.709328.
- Ichoku, C.; Giglio, L.; Wooster, M.J. and Remer, L.A. (2008). "Global characterization of biomass-burning patterns using satellite measurements of fire radiative energy", *Remote Sens. Environ.*, no. 112, pp. 2950-2962. DOI: 10.1016/j.rse.2008.02.009.
- Keeley, J.E. (2009). "Fire intensity, fire severity and burn severity: A brief review and suggested usage", *Int. J. Wildl. Fire*, no. 18, pp. 116-126. DOI: 10.1071/WF07049.
- Kern, A.N.; Addison, P.; Oommen, T.; Salazar, S.E. and Coffman, R.A. (2017). "Machine Learning Based Predictive Modeling of Debris Flow Probability Following Wildfire in the Intermountain Western United States", *Math. Geosci.*, pp. 1-19.
- Key, C.H. and Benson, N.C. (2006). *Landscape assessment (LA): Sampling and analysis methods*.
- Key, C.H. and Benson, N.C. (2002). "Post-fire assessment by remote sensing on National Park Service Lands", in J.L. Coffelt and R.K. Livingston, *Los Alamos*, NM October 31-November 3, 2000. USGS Open-File Report 02-11:56.
- Knipling, E.B. (1970). "Physical and physiological basis for the reflectance of visible and near-infrared radiation from vegetation", *Remote Sens. Environ.*, no. 1, pp. 155-159. DOI: 10.1016/S0034-4257(70)80021-9.
- Kolden, C.A. and Weisberg, P.J. (2007). "Assessing Accuracy of Manually-mapped Wildfire Perimeters In Topographically Dissected Areas", *Fire Ecol.*, no. 3, pp. 22-31. DOI: 10.4996/fireecology.0301022.
- Lentile, L.B.; Holden, Z.A.; Smith, A. M.S.; Falkowski, M.J.; Hudak, A.T.; Morgan, P.; Lewis, S.A.; Gessler, P.E. and Benson, N.C. (2006). "Remote sensing

- techniques to assess active fire characteristics and post-fire effects”, *Int. J. Wildl. Fire*, no. 15, pp. 319-345.
- Meng, R.; Wu, J.; Schwager, K.L.; Zhao, F.; Dennison, P.E.; Cook, B.D.; Brewster, K.; Green, T.M. and Serbin, S.P. (2017). “Using high spatial resolution satellite imagery to map forest burn severity across spatial scales in a Pine Barrens ecosystem”, *Remote Sens. Environ*, no. 191, pp. 95-109. DOI: 10.1016/j.rse.2017.01.016.
- Miller, J.D. and Quayle, B. (2015). “Calibration and validation of immediate post-fire satellite-derived data to three severity metrics”, *Fire Ecol.*, no. 11, pp. 12-30. DOI: 10.4996/fireecology.1102012.
- Miller, J.D. and Thode, A.E. (2007). “Quantifying burn severity in a heterogeneous landscape with a relative version of the delta Normalized Burn Ratio (dNBR)”, *Remote Sens. Environ*, no. 109, pp. 66-80. DOI: 10.1016/j.rse.2006.12.006.
- Mitri, G.H. and Gitas, I.Z. (2006). “Fire type mapping using object-based classification of Ikonos imagery”, *Int. J. Wildl. Fire*, no. 15, pp. 457-462, DOI: 10.1071/WF05085.
- Molina, J.L.; Bromley, J.; García-Aróstegui, J.L.; Sullivan, C. and Benavente, J. (2010). “Integrated water resources management of overexploited hydrogeological systems using Object-Oriented Bayesian Networks”, *Environ. Model. Softw.*, no. 25, pp. 383-397. DOI: 10.1016/j.envsoft.2009.10.007.
- Montealegre, A.L.; Lamelas, M.T.; Tanase, M.A. and De la Riva, J. (2014). “Forest fire severity assessment using ALS data in a mediterranean environment”, *Remote Sens.*, no. 6, pp. 4240-4265. DOI:10.3390/rs6054240.
- Morgan, P.; Keane, R.E.; Dillon, G.K.; Jain, T.B.; Hudak, A.T.; Karau, E.C.; Sikkink, P.G.; Holden, Z.A. and Strand, E.K. (2014). “Challenges of assessing fire and burn severity using field measures, remote sensing and modelling”, *Int. J. Wildl. Fire*, no. 23, pp. 1045-1060. DOI: 10.1071/WF13058.
- Parker, B.M., Lewis, T. and Srivastava, S.K. (2015). “Estimation and evaluation of multi-decadal fire severity patterns using Landsat sensors”, *Remote Sensing of Environment*, no. 170, pp. 340-349. <<https://doi.org/10.1016/j.rse.2015.09.014>>.
- Parks, S.A.; Dillon, G.K. and Miller, C. (2014). “A new metric for quantifying burn severity: The relativized burn ratio”, *Remote Sens.*, no. 6, pp. 1827-1844. DOI: 10.3390/rs6031827.
- Parsons, A.; Robichaud, P.R.; Lewis, S.A.; Napper, C.; Clark, J.T. and Jain, T.B. (2010). *Field guide for mapping post-fire soil burn severity*, Water, no. 49.
- Pausas, J.G.; Llovet, J.; Anselm, R. and Vallejo, R. (2008). “Are wildfires a disaster in the Mediterranean basin? – A review Vegetation changes Shrublands dominated by resprouting species”, *Int. J. Wildl. Fire*, no. 17, pp. 713-723. DOI: 10.1071/WF07151.
- Pereira, J.M.; Sa, A.C.L.; Sousa, A.M.O.; Silva, J.M.N.; Santos, T.N. and Carreiras, J.M.B. (1999). “Spectral characterisation and discrimination of burnt areas”,

- Remote Sens. Large Wildfires*, pp. 123-138. DOI: 10.1007/978-3-642-60164-4_7.
- Pleniou, M. and Koutsias, N. (2013). "Sensitivity of spectral reflectance values to different burn and vegetation ratios: A multi-scale approach applied in a fire affected area", *ISPRS J. Photogramm. Remote Sens.*, no. 79, pp. 199-210. DOI: 10.1016/j.isprsjprs.2013.02.016.
- Quintano, C.; Fernandez-Manso, A. and Roberts, D.A. (2017). "Burn severity mapping from Landsat MESMA fraction images and Land Surface Temperature", *Remote Sens. Environ.*, no. 190, pp. 83-95. DOI: 10.1016/j.rse.2016.12.009.
- Richter, R. (2007). "Atmospheric/Topographic Correction for Satellite Imagery (ATCOR - 2/3 User Guide). ATCOR-2/3 User Guid. Version 6.3, pp. 1-71. DOI: 10.1017/CBO9781107415324.004.
- Roy, D.P.; Boschetti, L. and Trigg, S.N. (2006). "Remote sensing of fire severity: Assessing the performance of the normalized burn ratio", *IEEE Geosci. Remote Sens. Lett.*, no. 3, pp. 112-116. DOI: 10.1109/LGRS.2005.858485.
- Safford, H.D.; Stevens, J.T.; Merriam, K.; Meyer, M.D. and Latimer, A.M. (2012). "Fuel treatment effectiveness in California yellow pine and mixed conifer forests", *For. Ecol. Manage.*, no. 274, pp. 17-28. DOI: 10.1016/j.foreco.2012.02.013.
- Said, Y.A.; Petropoulos, G.P. and Srivastava, P.K. (2015). "Assessing the influence of atmospheric and topographic correction and inclusion of SWIR bands in burned scars detection from high-resolution EO imagery: a case study using ASTER", *Nat. Hazards*, no. 78, pp. 1609-1628. DOI: 10.1007/s11069-015-1792-9.
- San-Miguel-Ayanz, J.; Moreno, J.M. and Camia, A. (2013). "Analysis of large fires in European Mediterranean landscapes: Lessons learned and perspectives", *For. Ecol. Manage.*, no. 294, pp. 11-22. DOI: 10.1016/j.foreco.2012.10.050.
- Schepers, L.; Haest, B.; Veraverbeke, S.; Spanhove, T.; Borre, J. Vanden and Goossens, R. (2014). "Burned area detection and burn severity assessment of a heathland fire in Belgium using airborne imaging spectroscopy (APEX)", *Remote Sens.*, no. 6, pp. 1803-1826. DOI: 10.3390/rs6031803.
- Smith, A.M.S.; Sparks, A.M.; Kolden, C.A.; Abatzoglou, J.T.; Talhelm, A.F.; Johnson, D.M.; Boschetti, L.; Lutz, J.A.; Apostol, K.G.; Yedinak, K.M.; Tinkham, W.T. and Kremens, R.J. (2016). "Towards a new paradigm in fire severity research using dose-response experiments", *Int. J. Wildl. Fire*, no. 25, pp. 158-166. DOI: 10.1071/WF15130.
- Stambaugh, M.C.; Hammer, L.D. and Godfrey, R. (2015). "Performance of burn-severity metrics and classification in oak woodlands and grasslands", *Remote Sens.*, no. 7, pp. 10501-10522. DOI: 10.3390/rs70810501.
- Tucker, C.J. (1979). "Red and photographic infrared linear combinations for monitoring vegetation", *Remote Sens. Environ.*, no. 8, pp. 127-150. DOI: 10.1016/0034-4257(79)90013-0.

- Turner, M.G.; Hargrove, W.W.; Gardner, R.H. and Romme, W.H. (1994). "Effects of Fire on Landscape Heterogeneity in Yellowstone National Park, Wyoming", *J. Veg. Sci.*, no. 5, pp. 731-742. DOI: 10.2307/3235886.
- Van Wagtenonk, J.W., Root, R.R. and Key, C.H. (2004). "Comparison of AVIRIS and Landsat ETM+ detection capabilities for burn severity", *Remote Sensing of Environment*, 92(3), pp. 397-408. <<https://doi.org/10.1016/j.rse.2003.12.015>>.
- Veraverbeke, S.; Harris, S. and Hook, S. (2011). Evaluating spectral indices for burned area discrimination using MODIS/ASTER (MASTER) airborne simulator data, *Remote Sens. Environ.*
- Veraverbeke, S.; Lhermitte, S.; Verstraeten, W.W. and Goossens, R. (2011). "Evaluation of pre/post-fire differenced spectral indices for assessing burn severity in a Mediterranean environment with Landsat Thematic Mapper", *Int. J. Remote Sensing*, no. 32, pp. 3521-3537. DOI: 10.1080/01431161003752430.
- Veraverbeke, S.; Verstraeten, W.W.; Lhermitte, S. and Goossens, R. (2010). Evaluating Landsat Thematic Mapper spectral indices for estimating burn severity of the 2007 Peloponnese wildfires in Greece", *Int. J. Wildl. Fire*, no. 19, pp. 558-569. DOI: 10.1071/WF09069.
- Viedma, O.; Quesada, J.; Torres, I.; De Santis, A. and Moreno, J.M. (2015). "Fire Severity in a Large Fire in a Pinus pinaster Forest is Highly Predictable from Burning Conditions, Stand Structure, and Topography", *Ecosystems*, no. 18, pp. 237-250. DOI: 10.1007/s10021-014-9824-y.
- White, J.; Ryan, K.; Key, C. and Running, S. (1996). "Remote Sensing of Forest Fire Severity and Vegetation Recovery", *Int. J. Wildl. Fire*. DOI: <<http://dx.doi.org/10.1071/WF9960125>>.
- Yan, G.; Mas, J.-F.; Maathuis, B.H.P.; Xiangmin, Z. and Van Dijk, P.M. (2006). "Comparison of pixel-based and object-oriented image classification approaches —a case study in a coal fire area, Wuda, Inner Mongolia, China", *Int. J. Remote Sens.*, no. 27, pp. 4039-4055. DOI: 10.1080/01431160600702632.