

Calcium crystal formation in the epileptic focus of an *in vivo* epilepsy model

Formación de cristales de calcio dentro del foco epiléptico de un modelo de epilepsia *in vivo*

Tessy López-Goerne,^{*,†} Rafael Valiente,^{*} Emilio Chávez,^{*} Antonella González-Bondani,^{*} Joaquín Manjarrez,^{**} Francisco J. Padilla-Godínez^{*,***}

ABSTRACT: Epilepsy represents a significant health concern, affecting an estimated 2 million individuals in Mexico —patients enduring more than 70 seizures daily—. In the present study, refractory epilepsy was induced in Wistar rats by repeated stimulation with pentylenetetrazol (PTZ), ranging from one to one hundred stimulations. Hippocampal tissue was analyzed via scanning electron microscopy (SEM) and energy-dispersive X-ray spectroscopy (EDS). The formation of solid calcium carbonate (CaCO₃) crystals within the epileptic focus where observed. Notably, the concentration of CaCO₃ exhibited a direct correlation with the number of stimulations, suggesting a progressive increase over the course of these events. This study puts forth a hypothesis elucidating the mechanism behind CaCO₃ crystal formation in response to PTZ-induced seizures. Further research is needed to ascertain whether there exists a correlation between the dysregulation of calcium ions (Ca²⁺) in epilepsy and the formation of CaCO₃. This inquiry opens avenues for deeper understanding and potential advancements in the diagnosis of epilepsy and related neurological disorders.

KEYWORDS: calcification, calcium carbonate, epilepsy, Kindling model, SEM, EDS.

RESUMEN: La epilepsia representa un importante problema de salud, al estimarse su afectación a 2 millones de individuos en México —los pacientes sufren más de 70 convulsiones diarias—. En el presente estudio se indujo epilepsia refractaria en ratas Wistar mediante estimulación repetida con pentilentetrazol (PTZ), de una a cien estimulaciones. El tejido del hipocampo se analizó mediante microscopía electrónica de barrido (SEM) y espectroscopía de rayos X de energía dispersiva (EDS). Se observó la formación de cristales sólidos de carbonato cálcico

Received: April 28, 2024.

Accepted: October 8, 2024.

Published: November 26, 2024.

[†] Funding: This research did not receive any specific grant from funding agencies in the public, commercial, or not-for-profit sectors.

Declaration of Competing Interest: None

Acknowledgements: None to be declared.

Institutional Review Board Statement: All studies were conducted in accordance with the National Institute of Health Guide for the Care and Use of Laboratory Animals and were approved by the Local Animal Care and Use Committee of the Department of Health Care of the Autonomous Metropolitan University Xochimilco. Animal numbers were kept to a minimum and all efforts were made to reduce animal suffering. All methods are reported in concurrence with ARRIVE guidelines for describing animal experiments.

^{*} Autonomous Metropolitan University-Xochimilco. Laboratory of Nanotechnology and Nanomedicine, Department of Health Care, Aut, Mexico.

^{**} National Institute of Neurology and Neurosurgery, Mexico.

^{***} Western Institute of Technology and Higher Education Department of Mathematics and Physics, Tlaquepaque, Jalisco, Mexico.

[†] Author for correspondence: tessy3@prodigy.net.mx



(CaCO₃) dentro del foco epiléptico. En particular, la concentración de CaCO₃ mostró una correlación directa con el número de estimulaciones, lo cual sugiere un aumento progresivo en el curso de estos eventos. Este estudio plantea una hipótesis, la cual elucida el mecanismo subyacente a la formación de cristales de CaCO₃ en respuesta a las convulsiones inducidas por PTZ. Es necesario seguir investigando para determinar si existe una correlación entre la desregulación de los iones de calcio (Ca²⁺) en la epilepsia y la formación de CaCO₃. Esta investigación abre vías para una comprensión más profunda y posibles avances en el diagnóstico de la epilepsia y los trastornos neurológicos relacionados.

PALABRAS CLAVE: calcificación, carbonato de calcio, epilepsia, modelo Kindling, SEM, EDS.

Introduction

Epilepsy is a chronic neurological disorder that manifests in recurrent, unprovoked seizures, profoundly affecting the lives of millions worldwide (Begli, 2020; Begley *et al.*, 2022; Falco-Walter, 2020). According to the World Health Organization (WHO), epilepsy affects approximately 50 million people globally, making it one of the most common neurological conditions (WHO, 2024). In Mexico alone, an estimated 2 million individuals are affected by epilepsy, with some patients enduring as many as 70 seizures daily (Pesqueira *et al.*, 2023; Guzmán-Jiménez *et al.*, 2020; Rubio *et al.*, 2021). Such frequent seizures can lead to significant cognitive, emotional, and social impairments, exacerbating the overall burden of the disease on both patients and healthcare systems (Strzelczyk *et al.*, 2023; Vonck *et al.*, 2023; Rozensztrauch and Kołtuniuk, 2022). The management of epilepsy typically involves anticonvulsant medications, which help control seizures in the majority of cases (Riva *et al.*, 2021; E. Perucca 2021; Ghosh *et al.*, 2021). However, about 30% of patients do not respond to these medications, a condition known as refractory or drug-resistant epilepsy (Guery and Rheims, 2021; Lerche, 2020; Sultana *et al.*, 2021; Kwan *et al.*, 2010). Refractory epilepsy represents a particularly challenging aspect of the disorder, as it often results in frequent and severe seizures that are difficult to manage, leading to progressive neurological damage over time (Janson and Bainbridge, 2021; Anzellotti *et al.*, 2020; Singh, Mishra and Goel, 2021). The development of effective treatments for refractory epilepsy requires a deeper understanding of the underlying mechanisms that contribute to the persistence of seizures and the failure of pharmacological interventions.

One of the primary challenges in epilepsy research is elucidating the complex pathophysiological processes that underlie seizure activity. Several factors, including genetic predisposition, abnormal neuronal firing, and imbalances in neurotransmitter systems, have been implicated in the development of epilepsy (Rho and Boison, 2022; P. Perucca, Bahlo and Berkovic, 2020; Symonds and McTague, 2020). Seizures induce alterations in mesial-temporal structures, leading to neuronal loss and hippocampal size reduction, with 80% of complex partial seizures originating in the temporal lobe (Toro Pérez *et al.*, 2020). The hippocampus, a region of the brain critically in-

involved in memory formation and spatial navigation, is also one of the most affected areas during seizures (Wu *et al.*, 2020; Pires *et al.*, 2021; Girardi-Schappo *et al.*, 2021). Repeated seizure activity can lead to significant damage in this region, which has been linked to cognitive decline and memory impairments in both animal models and human patients with epilepsy (Ives-Deliperi and Butler, 2021; Novak, Vizjak and Rakusa, 2022; Engel *et al.*, 2013).

Seizures have a profound impact on the normal ion flow in the brain, particularly in the temporal lobe, as the region frequently involved in epilepsy. During a seizure, there is an excessive, synchronized firing of neurons, disrupting the delicate balance of intracellular and extracellular ions that is essential for normal neuronal function (Grisar, 1984; Spampinato *et al.*, 2004; Scharfman, 2007). This disruption primarily involves key ions such as sodium (Na^+) (Catterall 2014), potassium (K^+) (Brenner and Wilcox, 2012), chloride (Cl^-) (Auer *et al.* 2020), and calcium (Ca^{2+}) (Dreier and Heinemann, 1991; Steinlein, 2014), with modifications on the intracellular and extracellular concentration of the ions as depicted in table 1. Normally, the flow of these ions across neuronal membranes is tightly regulated by ion channels and transporters to maintain resting membrane potential and to propagate action potentials in a controlled manner. However, during seizure activity, this regulation breaks down. For instance, there is a massive influx of Na^+ and Ca^{2+} into neurons, which leads to depolarization and the uncontrolled firing of action potentials (Oyryer *et al.*, 2018; Sun *et al.*, 2022). The excessive influx of Ca^{2+} into neurons is particularly damaging, as calcium plays a critical role in various intracellular signaling pathways, including neurotransmitter release, gene expression, and activation of enzymes like proteases and phospholipases, which can lead to neuronal injury and cell death if dysregulated (Raimondo *et al.*, 2015; Benaim *et al.*, 2020). Concurrently, the efflux of K^+ and accumulation of extracellular K^+ contribute to further depolarization and prolong seizure activity by lowering the threshold for subsequent action (Ding *et al.*, 2024; Heinemann *et al.*, 1986). This imbalance between intracellular and extracellular ion concentrations creates a vicious cycle of excitotoxicity, wherein excessive excitatory neurotransmitter release, particularly glutamate, further exacerbates ionic imbalances and neuronal hyperexcitability (Chen *et al.*, 2023; Sarlo and Holton, 2021; Ben-Ari, 2002). The temporal lobe, due to its dense network of excitatory circuits, is especially vulnerable to these changes, and prolonged or recurrent seizures can lead to long-term alterations in ion channel function, synaptic plasticity, and even structural damage, contributing to the development of chronic epilepsy (Helmstaedter *et al.*, 2003; Elger, Helmstaedter and Kurthen, 2004; Lévesque, Ragsdale and Avoli, 2019). Understanding these ion imbalances is crucial for developing therapeutic interventions aimed at restoring ionic homeostasis in epilepsy patients.

Table 1. $[ion]_{intra}$ and $[ion]_{extra}$ (intracellular and extracellular, free ion concentrations). And E_{pds} energy potential gradient.

| Ion | Typical rest | | | The typical peak during a seizure | | | Reference |
|------------------|--------------|-----------|-----------|-----------------------------------|-----------|-----------|-------------------------------|
| | $[ion]_i$ | $[ion]_e$ | E_{ion} | $[ion]_i$ | $[ion]_e$ | E_{ion} | |
| K ⁺ | 96 mM | 4 mM | -85 mV | 94 mM | 12 mM | -55 mV | Jiang and Haddad (1991) |
| Na ⁺ | 10 mM | 145 mM | +71 mV | 55 mM | 139 mM | +25 mV | Dreier and Heinemann (1991) |
| Ca ²⁺ | 70 nM | 2 mM | +137 mV | 700 nM | 100 μM | +66 mV | Jiang and Haddad (1991) |
| Cl ⁻ | 7 mM | 145 mM | -80 mV | 26 mM | 152 mM | -47 mV | Raimondo <i>et al.</i> (2015) |

Source: Author's elaboration.

In the current study, the effects of repeated seizures on calcium homeostasis and its potential link to the formation of calcium compounds crystals within the brain, specifically in the hippocampus, were evaluated in a well-established animal model of epilepsy, in which seizures were induced in Wistar rats through repeated administrations of pentylenetetrazol (PTZ), a chemical convulsant (Samokhina and Samokhin, 2018; Dhir, 2012). PTZ has been widely used in epilepsy research to induce seizures in rodents, as it reliably produces seizure activity that mimics certain aspects of human epilepsy, including both acute and chronic phases (Löscher, 2017). The hippocampal tissue from the rats was analyzed using scanning electron microscopy (SEM) and energy-dispersive X-ray spectroscopy (EDS) to investigate potential structural changes in response to PTZ-induced seizures. SEM and EDS are powerful tools for the observation and quantification of mineral formations in brain tissue, providing high-resolution imaging and precise elemental analysis (Lewis *et al.*, 2019; Cheville and Stasko, 2014). SEM enables detailed visualization of the ultrastructure of tissues, including the identification of abnormal mineral deposits, such as calcium crystals, by producing images with a resolution far beyond that of light microscopy. The high magnification and depth of field in SEM make it ideal for studying the three-dimensional morphology of mineral formations at the micro- and nanoscale (Goldstein *et al.*, 2018). Complementing SEM, EDS provides the ability to perform elemental analysis by detecting the characteristic X-rays emitted from a sample when it is bombarded by an electron beam (Wyroba *et al.*, 2015). This allows for the precise identification and quantification of specific elements, such as calcium, in biological tissues (Newbury, 2005). EDS operates based on the principle that each element emits X-rays at unique energy levels when excited by an electron beam, thus enabling the detection of the elemental composition of the sample (Schneider *et al.*, 2010). The combination of SEM and EDS is particularly beneficial for studying pathological mineralization in brain tissue, as it not only reveals the spatial distribution and structure of these deposits but also allows for the quantitative analysis of their elemental makeup (Tsolaki and Bertazzo, 2019). This dual capability is crucial for understanding

the role of mineral formations in neurological conditions, such as epilepsy, where calcium dysregulation may contribute to disease progression.

The findings of the study revealed the formation of solid calcium carbonate (CaCO_3) crystals within the epileptic foci of the hippocampus, a novel observation in epilepsy research. Interestingly, the concentration of CaCO_3 crystals was found to correlate directly with the number of PTZ stimulations, suggesting that the repeated seizure activity led to a progressive accumulation of these crystals over time. This raises several important questions regarding the potential mechanisms underlying CaCO_3 crystal formation and its implications for the pathophysiology of epilepsy.

Materials and methods

In vivo refractory epilepsy model

The kindling animal model was used as an *in vivo* refractory epilepsy model (Singh, Mishra and Goel, 2021). A total of 30 Wistar rats (180-260 g) were injected intraperitoneally with subconvulsive doses (35 mg/kg) of pentylenetetrazol (PTZ) dissolved in saline water daily. Following every injection, seizure activity was monitored for a duration of 20 minutes. The resultant seizures were categorized as follows: stage 0 denoting no observable response; stage 1 involving twitching of the face and ears; stage 2 consisting of jerking in the forelimbs and face; stage 3 encompassing myoclonic jerks and lifting; stage 4 characterized by clonic convulsions leading to the animal falling onto its side; stage 5 involving intense, repetitive tonic-clonic seizures. Animals were deemed to have undergone kindling once they displayed a sequence of three consecutive episodes at stage 4 or 5 (Spiller and Racine, 1994). Five groups (n = 6) were designated according to the number of kindling stimulations (K) that were induced: (i) K = 5; (ii) K = 8; (iii) K = 22; (iv) K = 34; (v) K = 60. The groups were compared to a control group (n = 6) that did not receive any treatment.

Histological procedures

At the 6-month mark after the analysis, the rats were euthanized with sodium pentobarbital (60 mg/kg) and intracardially perfused with 100 mL of 0.1 M phosphate buffer, followed by 100 mL of paraformaldehyde (4% w/v in 0.1 M PBS, PFA). Following fixation in 4% PFA for 12 hours, the brains were subjected to cryoprotection by undergoing consecutive 24-hour incubations in solutions containing 10%, 20% and 30% sucrose (dissolved in phosphate buffer). Subsequently, the brains were coronally sliced at a thickness of 10 μm using a cryostat and then preserved in an antifreeze solution. The sections were dyed using the Hematoxylin-eosin technique.

Measurement of crystals in brain tissue

Scanning electron microscopy (SEM) and energy-dispersive X-ray spectroscopy (EDS) techniques were used to measure crystal formation in extracted tissues.



For this, sections extracted from the frontal lobe were carefully chosen and treated with osmium tetroxide (1% in PB) for an hour at 4 °C. They were subsequently dehydrated using increasing concentrations of 70% ethanol supplemented with 1% uranyl acetate. After complete dehydration, the sections were immersed in propylene oxide and then exposed to a mixture of propylene oxide and Durcupan resin. Following a 48-hour polymerization period at 56 °C, the sections were observed under a light microscope to identify areas of interest. These areas were chosen for further processing: re-embedding and cutting into ultrathin sections for electron microscopy. To determine the appropriate region of the frontal lobe for ultrathin sectioning, semithin sections (500 nm thick) were stained using toluidine blue. The ultrathin sections (60 nm) were sliced using a Leica Ultracut UCT microtome, placed onto Formvar-coated single slot copper grids, and then stained with uranyl acetate and lead citrate.

The morphological characteristics and chemical composition of the crystals in the tissues were examined using a JEOL 5600 LV microscope, which was equipped with energy-dispersive X-ray spectroscopy (EDS) for elemental analysis. The SEM's ability to detect electron beam interactions with both organic and inorganic materials enabled detailed exploration of contrast variations and morphologies (Knott *et al.*, 2008; Knott, Rosset and Cantoni, 2011; Kempen *et al.*, 2015). For semi-quantification, the sample was measured at 20 kV, and secondary electrons (SE) were used to capture micrographs. Using a magnification of 2000x, initial micrographs were taken on which EDS analysis was performed to quantify signal intensity as counts per second based on the study area (2000 μm^2). For each Kindling stimulus value, three tissue samples were measured, and three micrographs were taken from different areas to ensure the measurements were representative of the entire tissue. The standard deviation of the intensities was used as the relative error. The signal intensity for each measured element was taken as its concentration over the standardized area, allowing for a correlation between intensity and the quantity of crystals present in the study area.

The determination of the compound type comprising the crystal was performed using point-based EDS, with the largest crystals used as reference points. The compound type was identified by consulting relevant literature and correlating the elements with their relative concentrations.

Statistical analysis

The statistical value was represented as the mean \pm the standard deviation associated with the counts per second for each element in the 2000 μm^2 measurement area. Once the data were obtained, logarithmic regressions were performed in the form $I_{\text{Ca}} = k \ln(K) + I_0$ where I_{Ca} represents the signal intensity of calcium in the measurement area, K is the number of Kindling stimulations, k is a constant that relates K , the PTZ concentration and the intensity, and I_0 is the initial calcium concentration at 0 Kindling stimulations. The logarithmic relationship that yielded a coefficient of determination greater

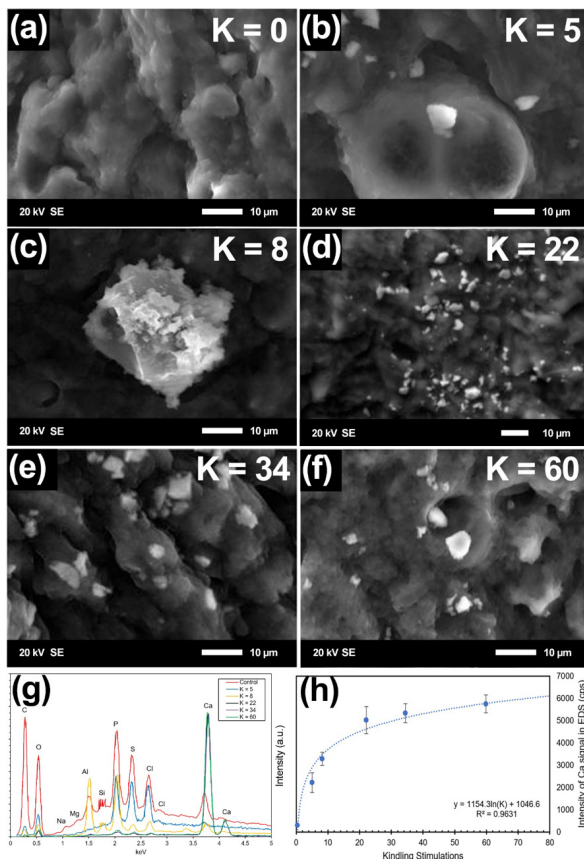
than 0.96 was identified. For determination of statistical differences in intensity, a one-way ANOVA was carried with a significance of 0.95.

Results

Calcium crystals analysis

Figure 1 shows representative microscopies obtained for the different groups according to the number of stimulations: K = 0 (1a); K = 5 (1b); K = 8 (1c); K = 22 (1d); K = 34 (1e) and K = 60 (1f). Control rats did not exhibit microscopic calcium crystal formation (figure 1a). In contrast, crystals in a wide range of sizes, from 5 to 20 μm in width, were observed in the rest of the tissues.

Figure 1. Representative SEM micrographs showing calcium carbonate crystals in brain tissue of epileptic rats at different Kindling stimulations.



(a) Healthy Wistar rat amygdala (K = 0); (b) K = 5; (c) K = 8; (d) K = 22; (e) K = 34; (f) K = 60; (g) EDS spectra of samples, and, (h) calcium intensity per 2000 μm^2 of tissue as a function of Kindling stimulations. SE = secondary electrons.

Source: Author's elaboration.

An EDS analysis was performed to identify and quantify the elements present in the identified crystals. Figure 1g shows the EDS spectra of the tissues analyzed as a function of the number of stimulations performed. Similarly, figure 1h presents a comparison between calcium intensity in counts per second and the number of stimulations (average values \pm standard deviation): the dotted line reflects the fitted curve after a logarithmic regression. The graph suggests that calcium concentration (as determined by signal intensity) increases as a matter of the number of Kindling stimulations, suggesting a relationship between Ca^{2+} dysregulation and the severity of the epileptic seizures in the animal. The fitted curve reflects that calcium intensity follows a logarithmic behavior in relation to the number of Kindling stimulations, with a constant value of 1154.3 that correlates the concentration of PTZ and the number of Kindling stimulations.

Point EDS on the largest crystals observed for each tissue made it possible to identify the proportion of the remaining elements with respect to the amount of calcium observed. Table 2 shows the comparison of elemental ratios for rat tissues with $K = 0$, 22 and 34.

From the stoichiometric quantification of the atomic ratios for each element (table 2) it was determined that the crystals could be calcium carbonates or carboxylates, since only significant differences in calcium intensity were identified with respect to the control group without Kindling stimulations. Other potential calcium compounds include hydroxyapatite, a common compound found in bone structures with formula $\text{Ca}_5(\text{PO}_4)_3(\text{OH})$; however, the significant decrease in the phosphorous signal associated with the increase in Kindling stimulations could indicate that crystals are not composed of such element. Since these were organic compounds, key elements such as carbon or oxygen were ruled out given the incapacity of the equipment to discern between organic and inorganic elements between the crystal formation.

Table 2. Punctual EDS quantification of elements present in calcium crystals.

| Element | K = 0 (cps)* | K = 22 (cps)* | K = 34 (cps)* |
|---------|-----------------|--------------------------------|--------------------------------|
| Na | 6.4 \pm 1.5 | 10.9 \pm 1.1 | 12.1 \pm 1.3 |
| Mg | 2.8 \pm 0.6 | 1.7 \pm 0.2 | 1.5 \pm 0.2 |
| Al | 21.3 \pm 5.8 | 12.8 \pm 1.3 | 30.4 \pm 3.2 |
| S | 74.1 \pm 12.1 | 36.1 \pm 13.0 | 46.9 \pm 7.0 |
| Cl | 77.4 \pm 16.2 | 47.9 \pm 23.8 | 49.1 \pm 15.4 |
| P | 80.1 \pm 32.1 | 1.8 \pm 0.1 [†] | 2.1 \pm 1.4 [†] |
| Ca | 72.6 \pm 12.0 | 4000.1 \pm 2600 [†] | 5006.6 \pm 1466 [†] |
| K | 5.3 \pm 0.8 | 8.5 \pm 0.9 | 9.1 \pm 0.8 |

* Values are expressed as the average cps \pm standard deviation.

[†] Statistically significant values with $p < 0.05$.

Source: Author's elaboration.

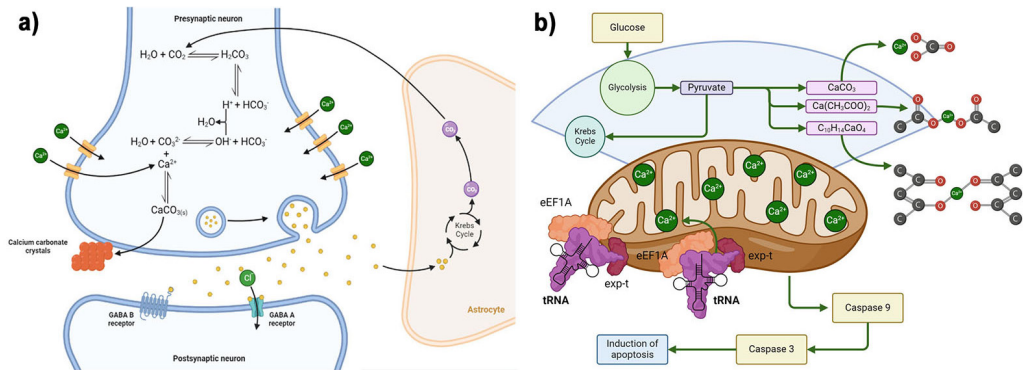
Discussion

Calcium carbonate is a common inorganic compound that is typically associated with skeletal structures in the human body, such as bones and teeth (Ohgushi *et al.*, 1992; Bushinsky and Lechleider, 1987; Harvey, Zobitz and Pak, 1988). The presence of CaCO_3 crystals in brain tissue, however, is highly unusual and has not been extensively documented in the context of epilepsy. We observed large solid crystals in epileptic seizure-induced rats. Detailed spectroscopic analysis showed that these structures were mainly composed of CaCO_3 . One possible explanation for the formation of these crystals is related to the dysregulation of calcium ions (Ca^{2+}) during seizure activity (Wojda, Salinska and Kuznicki, 2008; Akita and Fukuda, 2020; Kovac *et al.*, 2017). Seizures are known to cause excessive neuronal firing, leading to an influx of Ca^{2+} into neurons and astrocytes (Steinlein, 2014b; Siesjö, 1986). This influx can trigger a cascade of events, including the activation of calcium-dependent enzymes and signaling pathways that may contribute to neuronal damage (Yu, Chang and Tan, 2009; Zündorf and Reiser, 2011; Gleichmann and Mattson, 2011). The prolonged dysregulation of calcium homeostasis during recurrent seizures could potentially create conditions conducive to the precipitation of CaCO_3 crystals within the brain tissue.

A literature analysis suggests a hypothesis on the formation of CaCO_3 crystals. Synaptic processes are highly regulated under normal conditions. However, metabolism in the epileptic patient has as its main cellular manifestation what is known as the paroxysmal depolarizing shift (PDS) (Kubista, Boehm and Hotka, 2019; Hotka and Kubista, 2019; Tryba *et al.*, 2019; Tian *et al.*, 2005). Electrophysiological studies have shown evidence associated with a calcium ion (Ca^{2+})-mediated depolarization, which results in voltage gated sodium channels opening and action potentials (Hotka and Kubista, 2019b). This depolarization is followed by a process of hyperpolarization mediated by Ca^{2+} -dependent potassium channels, resulting in a massive entrance of Ca^{2+} in neurons (Tryba *et al.*, 2019b).

Carbon dioxide (CO_2) molecules released throughout the citric acid cycle may interact with intracellular water to produce carbonic acid (H_2CO_3); this same acid dissociates into protons (H^+) and acid carbonate (HCO_3^-), which reacts with hydroxyl ions (OH^-) generated by the same dissociation of the existing water to produce water (H_2O) and bicarbonate ions (CO_3^{2-}) (Becker, 1936). The high internalization of Ca^{2+} during PDS favors the interaction of CO_3^{2-} ions with Ca^{2+} ions, a reaction that culminates in the formation of CaCO_3 species, which are susceptible to their own polymerization and, thus, the formation of defined crystalline superstructures that fixes in the extra-neuronal tissue (Wiechers, Sturrock and Marais, 1975). In this sense, although H_2CO_3 acts as a defense mechanism in an attempt to compensate the polarization imbalance by calcium ions, the attempt is insufficient, and the charge decompensation leads to the appearance of epileptic seizures. The above is summarized in figure 2.

Figure 2. Hypothesis on the formation of calcium carbonate crystals.



(a) Formation of calcium carbonate crystals from Ca^{2+} and HCO_3^- . (b) Mitochondria function during a series of epileptic seizures and the impact of Ca^{2+} dysregulation on cell death through apoptosis. Source: Author's elaboration.

Other groups have reported the formation of calcium superstructures derived from CNS conditions (Froberg, Dorion and McMartin, 2006; Campbell *et al.*, 1999). However, until the present study, calcium crystal formation of any kind had not been reported in brains with epilepsy. As indicated above, dysregulation of neurotransmission mechanisms attributable to the calcium ion can lead to the formation of these crystals, and this phenomenon is not exclusive to epilepsy and can occur in other CNS pathologies.

The formation of $CaCO_3$ crystals could represent a protective response by the brain to sequester excess Ca^{2+} ions, thereby preventing further damage. Calcium sequestration mechanisms have been observed in other tissues, such as muscle and bone, where excess calcium is stored in the form of calcium salts (Kraus-Friedmann, 1990; Lenton *et al.*, 2015; Moore *et al.*, 1975; Movsesian, 1998). It is plausible that a similar mechanism may be at play in the brain during prolonged seizure activity, although further research is needed to confirm this hypothesis. Furthermore, such crystal formation in the hippocampus also raises the possibility that these crystals could serve as a biomarker for epilepsy progression or severity. The direct correlation between the number of Kindling stimulations and the concentration of $CaCO_3$ suggests that the accumulation of these crystals may reflect the cumulative effects of repeated seizures on the brain. If confirmed in human studies, $CaCO_3$ crystals could potentially be used as a diagnostic tool to monitor disease progression in patients with epilepsy. Additionally, the presence of $CaCO_3$ could offer insights into the long-term effects of refractory epilepsy and may inform the development of new therapeutic strategies aimed at restoring calcium homeostasis in the brain.

Notably, the identification of $CaCO_3$ crystals in the hippocampus further opens new avenues for investigating the broader implications of calcium dysregulation in neurological disorders. Calcium is a key signaling molecule in-

involved in various physiological processes, including synaptic transmission, gene expression, and cell death (Clapham, 1995; Dodd, Kudla and Sanders, 2010). Dysregulation of calcium signaling has been implicated in a wide range of neurological conditions, including Alzheimer's disease, Parkinson's disease, and amyotrophic lateral sclerosis (ALS) (Bojarski, Herms and Kuznicki, 2008; Wang, Shi and Wei, 2017; Calvo-Rodríguez, Kharitonova and Bacskai, 2020; Cali, Ottolini and Brini, 2014; Ludtmann and Abramov, 2018; Schapira, 2013; Leal and Gomes, 2015; Grosskreutz, Van Den Bosch and Keller, 2010; Kawamata and Manfredi, 2010). The findings of the current study suggest that calcium dysregulation may also play a central role in the pathophysiology of epilepsy, potentially through the formation of CaCO_3 crystals. Further research into the molecular mechanisms governing calcium homeostasis in the brain could provide important insights into the development of novel treatments for epilepsy and other neurological disorders.

Finally, further analyses are needed by means of SEM and spectroscopy evaluation (such as EDS) in tissues of neurodegenerative diseases, neoplasms, among others, that due to their nature associated to calcium metabolism could lead to the formation of these complexes. Similarly, it is necessary to continue research on the formation of CaCO_3 crystals observed in the present work to corroborate the mechanism of formation and determine whether it is a neuroprotective process or a symptom of the deregulatory process.

Conclusions

The present work reports the formation of solid CaCO_3 was observed for the first time in an animal model of epilepsy, determining a direct relationship in the increase of calcium concentration as a function of the number of stimulations. It is hypothesized that CaCO_3 is synthesized from calcium and carbonate ions present in synapses during the dysregulation observed in the pathological molecular processes of epilepsy. It remains unknown whether this phenomenon is a process of neuroprotection against the massive depolarization that occurs during epileptic seizures, so it is necessary to further investigate this hypothesis. However, the discovery of calcium carbonate (CaCO_3) crystals in the hippocampal tissue of PTZ-treated rats represents a significant advancement in our understanding of the pathophysiological changes that occur in response to repeated seizure activity. The correlation between the number of PTZ stimulations and the concentration of CaCO_3 crystals suggests that calcium dysregulation may play a key role in the progression of epilepsy. While the precise mechanisms underlying CaCO_3 crystal formation remain unclear, this study opens new avenues for research into the role of calcium homeostasis in epilepsy and other neurological disorders. Further investigation is needed to determine whether CaCO_3 crystals could serve as a biomarker for epilepsy progression and to explore the potential therapeutic implications of restoring calcium balance in the brain.

Contributions by author

Tessy López-Goerne: Conception and design of the article, methodological development, data mining, analysis and interpretation, writing of the original draft. Review and final editing of the text.

Rafael Valiente: Writing the original draft, review and final editing of the text.

Emilio Chávez: Writing the original draft, review and final editing of the text.

Antonella González-Bondani: Writing the original draft, review and final editing of the text.

Joaquín Manjarrez: Methodological development, data mining, analysis and interpretation.

Francisco J. Padilla-Godínez: Data mining, analysis and interpretation, writing of the original draft. Review and final editing of the text.

Referencias

- Akita, Tenpei and Atsuo Fukuda. (2020). Intracellular Cl⁻ Dysregulation causing and caused by pathogenic neuronal activity. *Pflügers Archiv – European Journal of Physiology*, 472(7): 977-87. <https://doi.org/10.1007/s00424-020-02375-4>.
- Anzellotti, Francesca, Fedele Dono, Giacomo Evangelista, Martina Di Pietro, Claudia Carrarini, Mirella Russo, Camilla Ferrante, Stefano L. Sensi and Marco Onofri. (2020). Psychogenic non-epileptic seizures and pseudo-refractory epilepsy, a management challenge. *Frontiers in Neurology*, 11(June). <https://doi.org/10.3389/fneur.2020.00461>.
- Auer, Theresa, Philipp Schreppel, Thomas Erker and Christoph Schwarzer. (2020). Impaired chloride homeostasis in epilepsy: molecular basis, impact on treatment and current treatment approaches. *Pharmacology & Therapeutics*, 205(January): 107422. <https://doi.org/10.1016/j.pharmthera.2019.107422>.
- Becker, Z. E. (1936). A comparison between the action of carbonic acid and other acids upon the living cell. *Protoplasma* 25(1): 161-75. <https://doi.org/10.1007/BF01839067>.
- Beghi, Ettore. (2020). The epidemiology of epilepsy. *Neuroepidemiology*, 54(2): 185-91. <https://doi.org/10.1159/000503831>.
- Begley, Charles, Ryan G. Wagner, Annette Abraham, Ettore Beghi, Charles Newton, Churl-Su Kwon, David Labiner and Andrea S. Winkler. (2022). The global cost of epilepsy: a systematic review and extrapolation. *Epilepsia*, 63(4): 892-903. <https://doi.org/10.1111/epi.17165>.
- Benaim, Gustavo, Alberto E. Paniz-Mondolfi, Emilia Mia Sordillo and Nathalia Martínez-Sotillo. (2020). Disruption of intracellular calcium homeostasis as a therapeutic target against trypanosoma cruzi. *Frontiers in Cellular and Infection Microbiology*, 10(February). <https://doi.org/10.3389/fcimb.2020.00046>.
- Ben-Ari, Yehezkel. (2002). Excitatory actions of gaba during development: the nature of the nurture. *Nature Reviews Neuroscience*, 3 (9): 728-39. <https://doi.org/10.1038/nrn920>.

- Bojarski, Lukasz, Jochen Herms and Jacek Kuznicki. (2008). Calcium dysregulation in Alzheimer's disease. *Neurochemistry International*, 52(4-5): 621-33. <https://doi.org/10.1016/j.neuint.2007.10.002>.
- Brenner, Robert, Karen S. Wilcox, Jeffrey L. Noebels, Massimo Avoli, Michael A. Rogawski, Richard W. Olsen, Antonio V. Delgado-Escueta (eds.). (2012). Potassium channelopathies of epilepsy. En *Jasper's basic mechanisms of the epilepsies*. 4a ed. Bethesda (MD): National Center for Biotechnology Information (US).
- Bushinsky, D. A. and R. J. Lechleider. (1987). Mechanism of proton-induced bone calcium release: calcium carbonate-dissolution. *American Journal of Physiology-Renal Physiology*, 253(5): F998-1005. <https://doi.org/10.1152/ajprenal.1987.253.5.F998>.
- Cali, Tito, Denis Ottolini and Marisa Brini. (2014). Calcium signaling in Parkinson's disease. *Cell and Tissue Research*, 357(2): 439-54. <https://doi.org/10.1007/s00441-014-1866-0>.
- Calvo-Rodríguez, María, Elizabeth K. Kharitonova and Brian J. Bacskaï. (2020). Therapeutic strategies to target calcium dysregulation in Alzheimer's disease. *Cells*, 9(11): 2513. <https://doi.org/10.3390/cells9112513>.
- Campbell, Iain L., Thomas Krucker, Scott Steffensen, Yvette Akwa, Henry C. Powell, Thomas Lane, Daniel J. Carr, Lisa H. Gold, Steven J. Henriksen and George R. Siggins. (1999). Structural and functional neuropathology in transgenic mice with CNS expression of IFN- α 1 published on the World Wide Web on 17 March, 1999.1. *Brain Research*, 835(1): 46-61. [https://doi.org/10.1016/S0006-8993\(99\)01328-1](https://doi.org/10.1016/S0006-8993(99)01328-1).
- Catterall, William A. (2014). Sodium channels, inherited epilepsy y antiepileptic drugs. *Annual Review of Pharmacology and Toxicology*, 54(1): 317-38. <https://doi.org/10.1146/annurev-pharmtox-011112-140232>.
- Chen, Tsang-Shan, Tzu-Hsin Huang, Ming-Chi Lai and Chin-Wei Huang. (2023). The role of glutamate receptors in epilepsy. *Biomedicines*, 11(3): 783. <https://doi.org/10.3390/biomedicines11030783>.
- Cheville, N. F. and J. Stasko. (2014). Techniques in electron microscopy of animal tissue. *Veterinary Pathology*, 51(1): 28-41. <https://doi.org/10.1177/0300985813505114>.
- Clapham, David E. (1995). Calcium signaling. *Cell*, 80(2): 259-68. [https://doi.org/10.1016/0092-8674\(95\)90408-5](https://doi.org/10.1016/0092-8674(95)90408-5).
- Dhir, Ashish. (2012). Pentylenetetrazol (PTZ) kindling model of epilepsy. *Current Protocols in Neuroscience*, 58(1). <https://doi.org/10.1002/0471142301.ns0937s58>.
- Ding, Fengfei, Qian Sun, Carter Long, Rune Nguyen Rasmussen, Sisi Peng, Qiwu Xu, Ning Kang *et al.* (2024). Dysregulation of extracellular potassium distinguishes healthy ageing from neurodegeneration. *Brain*, 147(5): 1726-39. <https://doi.org/10.1093/brain/awae075>.
- Dodd, Antony N., Jörg Kudla and Dale Sanders. (2010). The language of calcium signaling. *Annual Review of Plant Biology*, 61(1): 593-620. <https://doi.org/10.1146/annurev-arplant-070109-104628>.
- Dreier, J. P. and U. Heinemann. (1991). Regional and time dependent variations of low Mg $^{2+}$ induced epileptiform activity in rat temporal cortex slices. *Experi-*

- mental Brain Research*, 87(3). <https://doi.org/10.1007/BF00227083>.
- Elger, Christian E., Christoph Helmstaedter and Martin Kurthen. (2004). Chronic epilepsy and cognition. *The Lancet Neurology*, 3(11): 663-72. [https://doi.org/10.1016/S1474-4422\(04\)00906-8](https://doi.org/10.1016/S1474-4422(04)00906-8).
- Engel, Jerome, Asla Pitkänen, Jeffrey A. Loeb, F. Edward Dudek, Edward H. Bertram, Andrew J. Cole, Solomon L. Moshé *et al.* (2013). Epilepsy biomarkers. *Epilepsia*, 54(s4): 61-69. <https://doi.org/10.1111/epi.12299>.
- Falco-Walter, Jessica. (2020). Epilepsy – Definition, classification, pathophysiology and epidemiology. *Seminars in Neurology*, 40(06): 617-23. <https://doi.org/10.1055/s-0040-1718719>.
- Froberg, K., R. P. Dorion and K. E. McMartin. (2006). The role of calcium oxalate crystal deposition in cerebral vessels during ethylene glycol poisoning. *Clinical Toxicology*, 44(3): 315-18. <https://doi.org/10.1080/15563650600588460>.
- Ghosh, Shampa, Jitendra Kumar Sinha, Tarab Khan, Kuramkote Shivanna Devaraju, Prabhakar Singh, Kumar Vaibhav and Pankaj Gaur. (2021). Pharmacological and therapeutic approaches in the treatment of epilepsy. *Biomedicines*, 9(5): 470. <https://doi.org/10.3390/biomedicines9050470>.
- Girardi-Schappo, Mauricio, Fatemeh Fadaie, Hyo Min Lee, Benoit Caldirou, Viviane Sziklas, Joelle Crane, Boris C. Bernhardt, Andrea Bernasconi and Neda Bernasconi. (2021). Altered communication dynamics reflect cognitive deficits in temporal lobe epilepsy. *Epilepsia*, 62(4): 1022-33. <https://doi.org/10.1111/epi.16864>.
- Gleichmann, Marc and Mark P. Mattson. (2011). Neuronal calcium homeostasis and dysregulation. *Antioxidants & Redox Signaling*, 14(7): 1261-73. <https://doi.org/10.1089/ars.2010.3386>.
- Goldstein, Joseph I., Dale E. Newbury, Joseph R. Michael, Nicholas W. M. Ritchie, John Henry J. Scott and David C. Joy. (2018). *Scanning Electron Microscopy and X-Ray Microanalysis*. Nueva York, NY: Springer New York. <https://doi.org/10.1007/978-1-4939-6676-9>.
- Grisar, Thierry. (1984). Glial and neuronal Na⁺-K⁺ pump in epilepsy. *Annals of Neurology*, 16(S1): S128-34. <https://doi.org/10.1002/ana.410160719>.
- Grosskreutz, Julian, Ludo van den Bosch and Bernhard U. Keller. (2010). Calcium dysregulation in amyotrophic lateral sclerosis. *Cell Calcium*, 47(2): 165-74. <https://doi.org/10.1016/j.ceca.2009.12.002>.
- Guery, Deborah and Sylvain Rheims. (2021). Clinical management of drug resistant epilepsy: a review on current strategies. *Neuropsychiatric Disease and Treatment*, 17(July): 2229-42. <https://doi.org/10.2147/NDT.S256699>.
- Guzmán-Jiménez, Diana Elena, Jaime Berumen Campos, Carlos Alberto Venegas-Vega, Mariana Alejandre Sánchez and Ana Luisa Velasco. (2020). Familial mesial temporal lobe epilepsy in Mexico: inheritance pattern and clinical features. *Epilepsy Research*, 167(November): 106450. <https://doi.org/10.1016/j.eplepsyres.2020.106450>.
- Harvey, Jean A., Margaret M. Zobitz and Charles Y. C. Pak. (1988). Dose dependency of calcium absorption: a comparison of calcium carbonate and calcium citrate. *Journal of Bone and Mineral Research*, 3(3): 253-58. <https://doi.org/10.1002/jbmr.5650030303>.

- Heinemann, U., A. Konnerth, R. Pumain y W. J. Wadman. (1986). Extracellular calcium and potassium concentration changes in chronic epileptic brain tissue. *Advances in Neurology*, 44: 641-61.
- Helmstaedter, Christoph, Martin Kurthen, Silke Lux, Markus Reuber and Christian Erich Elger. (2003). Chronic epilepsy and cognition: a longitudinal study in temporal lobe epilepsy. *Annals of Neurology*, 54(4): 425-32. <https://doi.org/10.1002/ana.10692>.
- Hotka, Matej and Helmut Kubista. (2019). The paroxysmal depolarization shift in epilepsy research. *The International Journal of Biochemistry & Cell Biology*, 107(February): 77-81. <https://doi.org/10.1016/j.biocel.2018.12.006>.
- Ives-Deliperi, Victoria and James T. Butler. (2021). Mechanisms of cognitive impairment in temporal lobe epilepsy: a systematic review of resting-state functional connectivity studies. *Epilepsy & Behavior*, 115(February): 107686. <https://doi.org/10.1016/j.yebeh.2020.107686>.
- Janson, Marnie T. and Jacquelyn L. Bainbridge. (2021). Continuing burden of refractory epilepsy. *Annals of Pharmacotherapy*, 55(3): 406-8. <https://doi.org/10.1177/1060028020948056>.
- Jiang, C. and G. G. Haddad. (1991). Effect of anoxia on intracellular and extracellular potassium activity in hypoglossal neurons *in vitro*. *Journal of Neurophysiology*, 66(1): 103-11. <https://doi.org/10.1152/jn.1991.66.1.103>.
- Kawamata, Hibiki and Giovanni Manfredi. (2010). Mitochondrial dysfunction and intracellular calcium dysregulation in ALS. *Mechanisms of Ageing and Development*, 131(7-8): 517-26. <https://doi.org/10.1016/j.mad.2010.05.003>.
- Kempen, Paul J., Moritz F. Kircher, Adam de la Zerda, Cristina L. Zavaleta, Jesse V. Jokerst, Ingo K. Mellingerhoff, Sanjiv S. Gambhir and Robert Sinclair. (2015). A correlative optical microscopy and scanning electron microscopy approach to locating nanoparticles in brain tumors. *Micron*, 68(January): 70-76. <https://doi.org/10.1016/j.micron.2014.09.004>.
- Knott, Graham, Herschel Marchman, David Wall and Ben Lich. (2008). Serial section scanning electron microscopy of adult brain tissue using focused ion beam milling. *The Journal of Neuroscience*, 28(12): 2959-64. <https://doi.org/10.1523/JNEUROSCI.3189-07.2008>.
- Knott, Graham, Stéphanie Rosset and Marco Cantoni. (2011). Focussed ion beam milling and scanning electron microscopy of brain tissue. *Journal of Visualized Experiments*, 53(July). <https://doi.org/10.3791/2588>.
- Kovac, Stjepana, Albenka Dinkova Kostova, Alexander Herrmann, Nico Melzer, Sven Meuth and Ali Gorji. (2017). Metabolic and homeostatic changes in seizures and acquired epilepsy – Mitochondria, calcium dynamics and reactive oxygen species. *International Journal of Molecular Sciences*, 18(9): 1935. <https://doi.org/10.3390/ijms18091935>.
- Kraus-Friedmann, N. (1990). Calcium sequestration in the liver. *Cell Calcium*, 11(10): 625-40. [https://doi.org/10.1016/0143-4160\(90\)90017-O](https://doi.org/10.1016/0143-4160(90)90017-O).
- Kubista, Helmut, Stefan Boehm and Matej Hotka. (2019). The paroxysmal depolarization shift: reconsidering its role in epilepsy, epileptogenesis and beyond. *International*

- Journal of Molecular Sciences*, 20(3): 577. <https://doi.org/10.3390/ijms20030577>.
- Kwan, Patrick, Alexis Arzimanoglou, Anne T. Berg, Martin J. Brodie, W. Allen Hauser, Gary Mathern, Solomon L. Moshé, Emilio Perucca, Samuel Wiebe and Jacqueline French. (2010). Definition of drug resistant epilepsy: consensus proposal by the *ad hoc* task force of the ILAE Commission on Therapeutic Strategies. *Epilepsia*, 51(6): 1069-77. <https://doi.org/10.1111/j.1528-1167.2009.02397.x>.
- Leal, Sonia S. and Claudio M. Gomes. (2015). Calcium dysregulation links ALS defective proteins and motor neuron selective vulnerability. *Frontiers in Cellular Neuroscience*, 9(June). <https://doi.org/10.3389/fncel.2015.00225>.
- Lenton, Samuel, Tommy Nylander, Susana C. M. Teixeira and Carl Holt. (2015). A review of the biology of calcium phosphate sequestration with special reference to milk. *Dairy Science & Technology*, 95(1): 3-14. <https://doi.org/10.1007/s13594-014-0177-2>.
- Lerche, Holger. (2020). Drug-resistant epilepsy – Time to target mechanisms. *Nature Reviews Neurology*, 16(11): 595-96. <https://doi.org/10.1038/s41582-020-00419-y>.
- Lévesque, Maxime, David Ragsdale and Massimo Avoli. (2019). Evolving mechanistic concepts of epileptiform synchronization and their relevance in curing focal epileptic disorders. *Current Neuropharmacology*, 17(9): 830-42. <https://doi.org/10.2174/1570159X17666181127124803>.
- Lewis, Amanda J., Christel Genoud, Mélissa Pont, Wilma D. J. van de Berg, Stephan Frank, Henning Stahlberg, Sarah H. Shahmoradian and Ashraf Al-Amoudi. (2019). Imaging of post-mortem human brain tissue using electron and X-ray microscopy. *Current Opinion in Structural Biology*, 58(October):138-48. <https://doi.org/10.1016/j.sbi.2019.06.003>.
- Löscher, Wolfgang. (2017). Animal models of seizures and epilepsy: past, present and future role for the discovery of antiseizure drugs. *Neurochemical Research*, 42(7): 1873-88. <https://doi.org/10.1007/s11064-017-2222-z>.
- Ludtmann, Marthe H. R. and Andrey Y. Abramov. (2018). Mitochondrial calcium imbalance in Parkinson's disease. *Neuroscience Letters*, 663(January):86-90. <https://doi.org/10.1016/j.neulet.2017.08.044>.
- Moore, L., T. Chen, H. R. Knapp and E. J. Landon. (1975). Energy-dependent calcium sequestration activity in rat liver microsomes. *Journal of Biological Chemistry*, 250(12): 4562-68. [https://doi.org/10.1016/S0021-9258\(19\)41338-0](https://doi.org/10.1016/S0021-9258(19)41338-0).
- Movsesian, M. (1998). Calcium sequestration by the sarcoplasmic reticulum in heart failure. *Cardiovascular Research*, 37(2): 352-59. [https://doi.org/10.1016/S0008-6363\(97\)00259-9](https://doi.org/10.1016/S0008-6363(97)00259-9).
- Newbury, Dale E. (2005). Misidentification of major constituents by automatic qualitative energy dispersive X-ray microanalysis: a problem that threatens the credibility of the analytical community. *Microscopy and Microanalysis*, 11(6): 545-61. <https://doi.org/10.1017/S1431927605050531>.
- Novak, Ajda, Karmen Vizjak and Martin Rakusa. (2022). Cognitive impairment in people with epilepsy. *Journal of Clinical Medicine*, 11(1): 267. <https://doi.org/10.3390/jcm11010267>.

- Ohgushi, Hajime, Motoaki Okumura, Takafumi Yoshikawa, Keisuke Inboue, Norio Senpuku, Susumu Tamai and Edwin C. Shors. (1992). Bone formation process in porous calcium carbonate and hydroxyapatite. *Journal of Biomedical Materials Research*, 26(7): 885-95. <https://doi.org/10.1002/jbm.820260705>.
- Oyrer, Julia, Snezana Maljevic, Ingrid E. Scheffer, Samuel F. Berkovic, Steven Petrou and Christopher A. Reid. (2018). Ion channels in genetic epilepsy: from genes and mechanisms to disease-targeted therapies. *Pharmacological Reviews*, 70(1): 142-73. <https://doi.org/10.1124/pr.117.014456>.
- Perucca, Emilio. (2021). The pharmacological treatment of epilepsy: recent advances and future perspectives. *Acta Epileptologica*, 3(1): 22. <https://doi.org/10.1186/s42494-021-00055-z>.
- Perucca, Piero, Melanie Bahlo and Samuel F. Berkovic. (2020). The genetics of epilepsy. *Annual Review of Genomics and Human Genetics*, 21(1): 205-30. <https://doi.org/10.1146/annurev-genom-120219-074937>.
- Pesqueira, Gerardo Quiñones, Daniel San-Juan, Rosana Huerta Albarrán, Máximo León Vázquez, Gerardo Quiñones Canales and Jorge González Pesqueira. (2023). A systematic review of the epidemiology of epilepsy in Mexico during 1970 to 2020. *Archivos de Neuro-Psiquiatria*, 81(01): 074-080. <https://doi.org/10.1055/s-0042-1758647>.
- Pires, Geoffrey, Dominique Leitner, Eleanor Drummond, Evgeny Kanshin, Shruti Nayak, Manor Askenazi, Arline Faustin *et al.* (2021). Proteomic differences in the hippocampus and cortex of epilepsy brain tissue. *Brain Communications*, 3(2). <https://doi.org/10.1093/braincomms/fcab021>.
- Pumain, R., C. Menini, U. Heinemann, J. Louvel and C. Silva-Barrat. (1985). Chemical synaptic transmission is not necessary for epileptic seizures to persist in the baboon *Papio papio*. *Experimental Neurology*, 89(1): 250-58. [https://doi.org/10.1016/0014-4886\(85\)90280-8](https://doi.org/10.1016/0014-4886(85)90280-8).
- Raimondo, Joseph V., Richard J. Burman, Arieh A. Katz and Colin J. Akerman. (2015). Ion dynamics during seizures. *Frontiers in Cellular Neuroscience*, 9(October). <https://doi.org/10.3389/fncel.2015.00419>.
- Rho, Jong M. and Detlev Boison. (2022). The metabolic basis of epilepsy. *Nature Reviews Neurology* 18(6): 333-47. <https://doi.org/10.1038/s41582-022-00651-8>.
- Riva, Antonella, Alice Golda, Ganna Balagura, Elisabetta Amadori, Maria Stella Vari, Gianluca Piccolo, Michele Iacomino *et al.* (2021). New trends and most promising therapeutic strategies for epilepsy treatment. *Frontiers in Neurology*, 12(December). <https://doi.org/10.3389/fneur.2021.753753>.
- Rozensztrauch, Anna and Aleksandra Kołtuniuk. (2022). The quality of life of children with epilepsy and the impact of the disease on the family functioning. *International Journal of Environmental Research and Public Health*, 19(4): 2277. <https://doi.org/10.3390/ijerph19042277>.
- Rubio, Carmen, Rudy Luna, Monserrat Ibarra-Velasco and Ángel Lee. (2021). Epilepsy: a bibliometric analysis (1968-2020) of the Instituto Nacional de Neurología y Neurocirugía 'Manuel Velasco Suárez' in Mexico. *Epilepsy & Behavior*, 115(February): 107676. <https://doi.org/10.1016/j.yebeh.2020.107676>.

- Samokhina, E. and Alexander Samokhin. (2018). Neuropathological profile of the pentylenetetrazol (PTZ) kindling model. *International Journal of Neuroscience*, 128(11): 1086-96. <https://doi.org/10.1080/00207454.2018.1481064>.
- Sarlo, Gabrielle L. and Kathleen F. Holton. (2021). Brain concentrations of glutamate and GABA in human epilepsy: a review. *Seizure*, 91(October): 213-27. <https://doi.org/10.1016/j.seizure.2021.06.028>.
- Schapiro, Anthony H. V. (2013). Calcium dysregulation in Parkinson's disease. *Brain*, 136(7): 2015-16. <https://doi.org/10.1093/brain/awt180>.
- Scharfman, Helen E. (2007). The neurobiology of epilepsy. *Current Neurology and Neuroscience Reports*, 7(4): 348-54. <https://doi.org/10.1007/s11910-007-0053-z>.
- Schneider, Gerd, Peter Guttman, Stefan Heim, Stefan Rehbein, Florian Mueller, Kunio Nagashima, J. Bernard Heymann, Waltraud G. Müller and James G. McNally. (2010). Three-dimensional cellular ultrastructure resolved by X-ray microscopy. *Nature Methods*, 7(12): 985-87. <https://doi.org/10.1038/nmeth.1533>.
- Siesjö, Bo K. (1986). Cellular calcium metabolism, seizures y ischemia. *Mayo Clinic Proceedings*, 61(4): 299-302. [https://doi.org/10.1016/S0025-6196\(12\)61935-1](https://doi.org/10.1016/S0025-6196(12)61935-1).
- Singh, Tanveer, Awanish Mishra and Rajesh Kumar Goel. (2021). PTZ kindling model for epileptogenesis, refractory epilepsy, and associated comorbidities: relevance and reliability. *Metabolic Brain Disease*, 36(7): 1573-90. <https://doi.org/10.1007/s11011-021-00823-3>.
- Spampanato, Jay, Ildiko Aradi, Ivan Soltesz and Alan L. Goldin. (2004). Increased neuronal firing in computer simulations of sodium channel mutations that cause generalized epilepsy with febrile seizures plus. *Journal of Neurophysiology*, 91(5): 2040-50. <https://doi.org/10.1152/jn.00982.2003>.
- Spiller, Allison E. y Ronald J. Racine. (1994). The effect of kindling beyond the 'Stage 5' criterion on paired-pulse depression and hilar cell counts in the dentate gyrus. *Brain Research*, 635(1-2): 139-47. [https://doi.org/10.1016/0006-8993\(94\)91433-8](https://doi.org/10.1016/0006-8993(94)91433-8).
- Steinlein, Ortrud K. (2014). Calcium signaling and epilepsy. *Cell and Tissue Research*, 357(2): 385-93. <https://doi.org/10.1007/s00441-014-1849-1>.
- Strzelczyk, Adam, Angel Aledo-Serrano, Antonietta Coppola, Adrien Didelot, Elizabeth Bates, Ricardo Sainz-Fuertes and Charlotte Lawthom. (2023). The impact of epilepsy on quality of life: findings from a European survey. *Epilepsy & Behavior*, 142(May): 109179. <https://doi.org/10.1016/j.yebeh.2023.109179>.
- Sultana, Bushra, Marie-Andrée Panzini, Ariane Veilleux Carpentier, Jacynthe Comtois, Bastien Rioux, Geneviève Gore, Prisca R. Bauer *et al.* (2021). Incidence and prevalence of drug-resistant epilepsy. *Neurology*, 96(17): 805-17. <https://doi.org/10.1212/WNL.0000000000011839>.
- Sun, Jinyi, Yang Zheng, Zhong Chen and Yi Wang. (2022). The role of Na⁺ – K⁺ – ATPase in the epileptic brain. *CNS Neuroscience & Therapeutics*, 28(9): 1294-1302. <https://doi.org/10.1111/cns.13893>.
- Symonds, Joseph D. and Amy McTague. (2020). Epilepsy and developmental disorders: next generation sequencing in the clinic. *European Journal of Paediatric Neurology*, 24(January):15-23. <https://doi.org/10.1016/j.ejpn.2019.12.008>.
- Tian, Guo-Feng, Hooman Azmi, Takahiro Takano, Qiwu Xu, Weiguo Peng, Jane Lin,

- NancyAnn Oberheim *et al.* (2005). An astrocytic basis of epilepsy. *Nature Medicine*, 11(9): 973-81. <https://doi.org/10.1038/nm1277>.
- Toro Pérez, Juan Enrique, Ana Suller Martí, Manuel Herrera Aramburu, Juan Botta and Jorge G. Burneo. (2020). Epilepsia del lóbulo temporal plus: revisión. *Revista de Neurología*, 71(06): 225. <https://doi.org/10.33588/rn.7106.2020339>.
- Tryba, Andrew K., Edward M. Merricks, Somin Lee, Tuan Pham, SungJun Cho, Douglas R. Nordli, Tahra L. Eissa *et al.* (2019). Role of paroxysmal depolarization in focal seizure activity. *Journal of Neurophysiology*, 122(5): 1861-73. <https://doi.org/10.1152/jn.00392.2019>.
- Tsolaki, Elena and Sergio Bertazzo. (2019). Pathological mineralization: the potential of mineralomics. *Materials*, 12(19): 3126. <https://doi.org/10.3390/ma12193126>.
- Vonck, Kristl, Arnaud Biraben, Magdalena Bosak, Poul Jørgen Jennum, Vasilios K. Kimiskidis, Petr Marusic, James W. Mitchell *et al.* (2023). Usage and impact of patient-reported outcomes in epilepsy. *Brain and Behavior*, 13(12). <https://doi.org/10.1002/brb3.3342>.
- Wang, Yong, Yun Shi and Huafeng Wei. (2017). Calcium dysregulation in Alzheimer's disease: a target for new drug development. *Journal of Alzheimer's Disease & Parkinsonism*, 7(5). <https://doi.org/10.4172/2161-0460.1000374>.
- WHO. (2024). *Epilepsy*. World Health Organization. February 7, 2024.
- Wiechers, H. N. S, P Sturrock and G. V. R. Marais. (1975). Calcium carbonate crystallization kinetics. *Water Research*, 9(9): 835-45. [https://doi.org/10.1016/0043-1354\(75\)90143-8](https://doi.org/10.1016/0043-1354(75)90143-8).
- Wojda, Urszula, Elzbieta Salinska and Jacek Kuznicki. (2008). Calcium ions in neuronal degeneration. *IUBMB Life*, 60(9): 575-90. <https://doi.org/10.1002/iub.91>.
- Wu, Dongyan, Feiyan Chang, Dantao Peng, Sheng Xie, Xiaoxuan Li and Wenjing Zheng. (2020). The morphological characteristics of hippocampus and thalamus in mesial temporal lobe epilepsy. *BMC Neurology*, 20(1): 235. <https://doi.org/10.1186/s12883-020-01817-x>.
- Wyroba, Elzbieta, Szymon Suski, Karolina Miller and Rafał Bartosiewicz. (2015). Biomedical and agricultural applications of energy dispersive X-ray spectroscopy in electron microscopy. *Cellular and Molecular Biology Letters*, 20(3). <https://doi.org/10.1515/cmble-2015-0028>.
- Yu, Jin-Tai, Raymond Chuen-Chung Chang and Lan Tan. (2009). Calcium dysregulation in Alzheimer's disease: from mechanisms to therapeutic opportunities. *Progress in Neurobiology*, 89(3): 240-55. <https://doi.org/10.1016/j.pneurobio.2009.07.009>.
- Zündorf, Gregor and Georg Reiser. (2011). Calcium dysregulation and homeostasis of neural calcium in the molecular mechanisms of neurodegenerative diseases provide multiple targets for neuroprotection. *Antioxidants & Redox Signaling*, 14(7): 1275-88. <https://doi.org/10.1089/ars.2010.3359>.