

<https://doi.org/10.22201/igeof.00167169p.2021.60.4.1949>

## MAGNETIC PARAMETERS AND PALEOCLIMATE: A CASE STUDY OF LOESS DEPOSITS OF NORTH-EAST OF IRAN

Fereshteh M. Haskouei<sup>1\*</sup>, Habib Alimohammadian<sup>2</sup>, Jafar Sabouri<sup>3</sup>

Recived: March 23, 2019; accepted: May 7, 2021; published online: October 1, 2021.

### RESUMEN

Las técnicas de magnetismo ambiental nos permiten reconstruir las condiciones del paleoclima para obtener resultados como las pérdidas. Las propiedades magnéticas de los minerales se utilizan como sustitutos de los cambios ambientales. En este estudio se investigó la secuencia magnética de loess-paleosol de la sección de Kolet en Neka, al noreste de Irán. Fueron aplicados métodos de magnetismo ambiental para reconstruir los cambios del paleoclima. Se investigó la relación entre los cambios del paleoclima y los proxies del magnetismo ambiental como la variación de la susceptibilidad magnética ( $\chi$ ). Las técnicas de laboratorio indicaron la presencia del factor principal de propiedad magnética en la secuencia de loess-paleosol, como magnetita, maghemita, etc. También, se estimó magnéticamente parámetros (como SIRM, HIRM, etc.) para confirmar concentraciones de partículas tanto eólicas como pedogénicas frente a variaciones de la mejora de la susceptibilidad magnética. Los valores de  $\chi$  muestran picos prominentes para los tres horizontes de suelos y paleosuelos bien desarrollados, Suelo reciente (S0 por sus siglas en inglés), Paleosol superior (S1, por sus siglas en inglés) y Paleosol inferior (S2, por sus siglas en inglés); que se refieren a condiciones más cálidas y húmedas. Como resultado se obtuvo que el aumento/disminución de la susceptibilidad magnética coincide con la secuencia paleosol-loess, y probablemente con condiciones húmedas/áridas. Además, las variaciones de la susceptibilidad magnética versus la columna litológica de la sección de Kolet permitieron reconocer períodos paleoclimáticos conocidos como ciclos interglaciares/glaciales. Se trazó la variación de la susceptibilidad magnética (MS, por sus siglas en inglés), la magnetización del remanente natural (NRM, por sus siglas en inglés), la susceptibilidad dependiente de la frecuencia ( $\chi_{fd}$ ) y de  $\chi_{fd}\%$  versus la gráfica litológica del perfil de loess para confirmar que los depósitos de loess/paleosol de la sección de Kolet tienen partículas magnéticas. Luego, aplicamos los datos magnéticos obtenidos como variación de susceptibilidad magnética (MS, por sus siglas en inglés) para indicar que ha habido períodos glaciales/interglaciares durante los últimos 50 ka. Por lo tanto, durante este período de tiempo, hay tres ocurrencias glaciares importantes en el área de estudio. Además, concluimos que no hubo ocurrencia de glaciaciones principales desde los últimos 20.5 ka.

**PALABRAS CLAVE:** Magnetismo de Loess, Parámetros magnéticos, Paleoclima, Períodos interglaciares/glaciares, Neka e Irán.

\*Corresponding author: [haskouei@gmail.com](mailto:haskouei@gmail.com)

<sup>1</sup> F. Mahdipour. Haskouei is a PhD student of Paleontology, University of Isfahan, Isfahan, Iran

<sup>3</sup> J. Sabouri is Principal Investigator palynology of Department of Paleontology, Geological Survey of Iran, Tehran, Iran

<sup>2</sup> H. Alimohammadian is with Geological Survey of Iran, Tehran, Iran  
Instituto Mexicano del Petróleo  
México City, México

## ABSTRACT

Environmental magnetism techniques enable us to reconstruct paleoclimate conditions in some deposition such as losses. The magnetic properties of minerals are used as proxies for environmental changes. For this study, loess/paleosol sequence of Kolet section at Neka, north-east of Iran were magnetically investigated. We applied environmental magnetism methods, to reconstruct paleoclimate changes. We investigated relationship between paleoclimate changes and environmental magnetism proxies like magnetic susceptibility ( $\chi$ ) variation. The laboratory techniques indicated the presence of main factor of magnetic property in loess/paleosol sequence, such as magnetite, maghemite and etc. We also estimated magnetically parameters (like SIRM, HIRM and etc.) to confirm concentrations of both aeolian and pedogenic particles versus variations of magnetic susceptibility enhancement. The  $\chi$  values show prominent peaks for the three well developed soil and paleosol horizons, Recent Soil (S0), Upper Paleosol (S1) and Lower Paleosol (S2); which refer to warmer and wetter conditions. As result, we concluded that the increase/decreasing of magnetic susceptibility is coinciding with palaeosol/loess sequence, and probably with humid/arid conditions. Moreover, variations of magnetic susceptibility versus lithological column of Kolet section enabled us to recognize paleoclimatically periods known as interglacial/glacial cycles. We plotted variation of magnetic susceptibility (MS), Natural Remnant Magnetization (NRM), Frequency Dependent Susceptibility ( $\chi_{fd}$ ) and  $\chi_{fd}\%$  versus lithological plot of the loess profile to confirm loess/paleosol deposits of Kolet section bear magnetic particles. Then, we applied the obtained magnetic data as variation of magnetic susceptibility (MS) to indicate that there have been glacial/interglacial periods during over the past 50 ka. Hence, during this period of time, there are three major glacial occurrences in the study area. Also, we conclude there was no main glaciation occurrence since last 20.5 ka.

**KEY WORDS:** Loess Magnetism, Magnetic parameters, Palaeoclimate, Interglacial/glacial periods, Neka and Iran.

## INTRODUCTION

The northern Iranian loess record is in excellent agreement with the loess record of the Northern Hemisphere, e.g., Europe (Frechen *et al.*, 2003), Central Asia (Frechen and Dodonov 1998; Machalett *et al.*, 2006), or southern Middle Siberia (Frechen *et al.*, 2005). During the 1960s and the 1970s, loess and the intercalated palaeosols were correlated with moist and dry periods of the Holocene (Barbier, 1960; Ehlers, 1971; Frechen, *et al.*, 2009). Generally, little information is available about the climate change in the dry regions of central and northeast Iran, although an argument commonly accepted is that loess accumulated during cold and dry glacial periods and the results of numerous investigations on loess deposits have led to a common acceptance of the close relationship between loess accumulation and soil formation with dry-cold and moist-warm periods, respectively (Karimi, *et al.*, 2009). Similarly, the initial hypothesis of our studies is probably over the past 50ka, loess particles of Kolet Section transported by wind during glacial periods, and then paleosol horizons formed during interglacial periods. First of all we applied some magnetics methods to confirm our deposits bear enough magnetical particles, and it is a good idea to using environmental magnetic proxies such as variation of magnetic susceptibility (MS) to detect glacial/interglacial cycles versus lithological profile.

There is some investigation such as Kehl *et al.* (2005) that inform us the loess record from north of Iran is an excellent archive of climate and environmental changes at least for the past 800ka as demonstrated by up to eight intercalated pedocomplexes in the Neka area. On the other hand there is not any investigation or working on paleomagnetism of Neka loesses. There was some doubt about magnetic capacity of Neka loess for environmental magnetism studies, specially using magnetic susceptibility ( $\chi$ ) curve to detect paleoclimatically changes (glacial/interglacial cycles). In fact, the loess record of Northern Iran perhaps provides a missing link for the correlation between Central Asian and European loess archives, as well as Frechen, *et al.*, 2009 mentioned the Caspian Lowland of Northern Iran is part of the Eurasian loess belt extending from Northwest Europe to Central Asia and China.

This study aims to confirm reconstruction of climatically changes by using magnetic methods and comparing the curves of magnetic parameters together. As have been explained before, little information has been published on records of past climate change in Northern Iran. Moreover, in order to improve the environmental magnetism studies of Iran and reconstruct paleoclimate changes, loess records of northern Iran especially in this area require more information from other field investigations. Actually there is no magnetically investigation on Neka loess has done before; also no investigation of magnetical capacities of loess/paleosol sequences of Iran has been studied. However this study detect the models of paleoclimate changes, by using an environmental magnetism proxy, variation of magnetic susceptibility ( $\chi$ ) curve for Neka loess/paleosol sequence, but it is necessary to assemble more investigation results for this area in the future works.

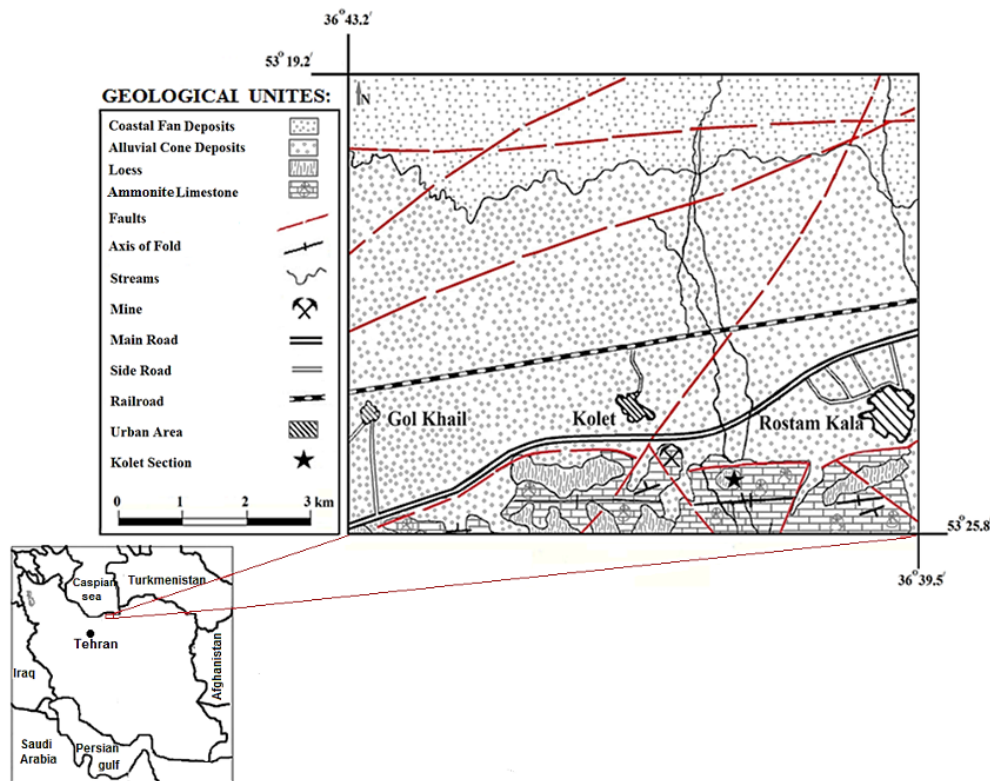


Figure 1. The Geological Map of the study area illustrates Geological structures and lithology of costal and mountainous region (Haskouei and Alimohammadian, 2020).

## STUDY AREA

The study area is located in the Caspian Lowland of Northern Iran, on the northern foothills of the Alborz Mountains east of Sari (Fig. 1), which is a little piece of loess deposits in the east of north-central of Iran. This zone consists of areas that are located in the north of the Alborz fault, bounded to the north by the Caspian Sea, and the northern coastal plain of Iran, which are covered with thick layers of loess, to the east. Loess profile is found in a mine, on the northern foothills of the Alborz Mountains near the main road of Sari-Behshahr, Mazandaran providence (Fig. 1). The oldest deposits of area are Jurassic limestones and dolomites covered by wind-blown loesses with a significant expansion (Kabirnia *et al.*, 2003), in most parts of study area. Northern of Iran is mentioned by Tietze (1877), Stahl (1923) and Bobek (1937) as little information loess deposits about the nature, origin and chronology of the loess has ever been published. Kehl *et al.*, (2006) studied some part of this area and found several well-developed palaeosol horizons intercalated in the loess record indicate an alternation of comparatively dry and cold climate phases with increased dust accumulation including loess formation, and moist and warm phases with soil formation, respectively. Furthermore, this area was described by Frechen, *et al.* (2009), who suggested that the loess/palaeosol sequences of the Caspian Low land in Northern Iran provide detailed archives of climate and environmental change showing a close relationship to global cooling and warming trends for the late Pleistocene and Holocene period.

The study section which is informally named as Kolet Section falls between 36° 39' 44" N and 53° 23' 56" E. It is situated at about 8 km away of Neka city, almost opposite of Kolet Village, near the main road of Sari-Behshahr, in Mazandaran Province, north of Iran. It is bounded by Alborz fault in the south and Caspian Sea coast line in the north (Fig. 1). Based on field observations, Loess/paleosol sequence followed the paleogeomorphology patterns and deposited on altitudes and lowlands of the older rocks (Fig. 2), which are probably late Jurassic marl limestones, or perhaps the same Ammonite limestone shown in the geological map of the study area (Fig. 1).

OSL dates for studied section are obtained by Kehl, *et al.*, (2005), and described loess/palaeosol sequences a maximum thickness of approximately 20m covers Jurassic limestone of the Alborz front hills. The lithological units are described as the following: 0-2 m is composed of Recent Soil horizon (S0). OSL age of the bottom of S0 is  $20.5 \pm 2.0$ ka; 2-8.3 m is Upper Loess with a buffed-yellow color (L1). OSL age of the bottom of L1 is  $37.8 \pm 3.6$ ka; 8.3-8.7m is Upper paleosol, a developed narrow paleosol (S1) with a red brown color. From top to bottom of S1, the color becomes light, and pedogenesis become weaker. Second loess deposit is Lower Loess (L2) with buffed-yellow color at the depths from 8.7 to 9.9m; 9.9-10.7m is composed of dark brown paleosol (S2). OSL age of S2 is  $48.7 \pm 4.7$ ka (Fig. 2).

## SAMPLING AND METHODES

The total number of 117 samples with 10 cm intervals (in thinner layers 5 cm intervals) were collected from loess (paleosol) units (Fig. 3-a to d). Magnetic susceptibility (MS), magnetic mineralogy, Isothermal remnant magnetization (IRM), Saturation Induced Remnant Magnetization (SIRM) carried out on samples. Natural Remnant Magnetization (NRM) was measured, using Spinner (JR-6A). Isothermal Remnant Magnetization (IRM) acquisition experiments were carried out using a Pulse Magnetizer, a T electromagnet and a spinner magneto-meter. Isothermal Remnant



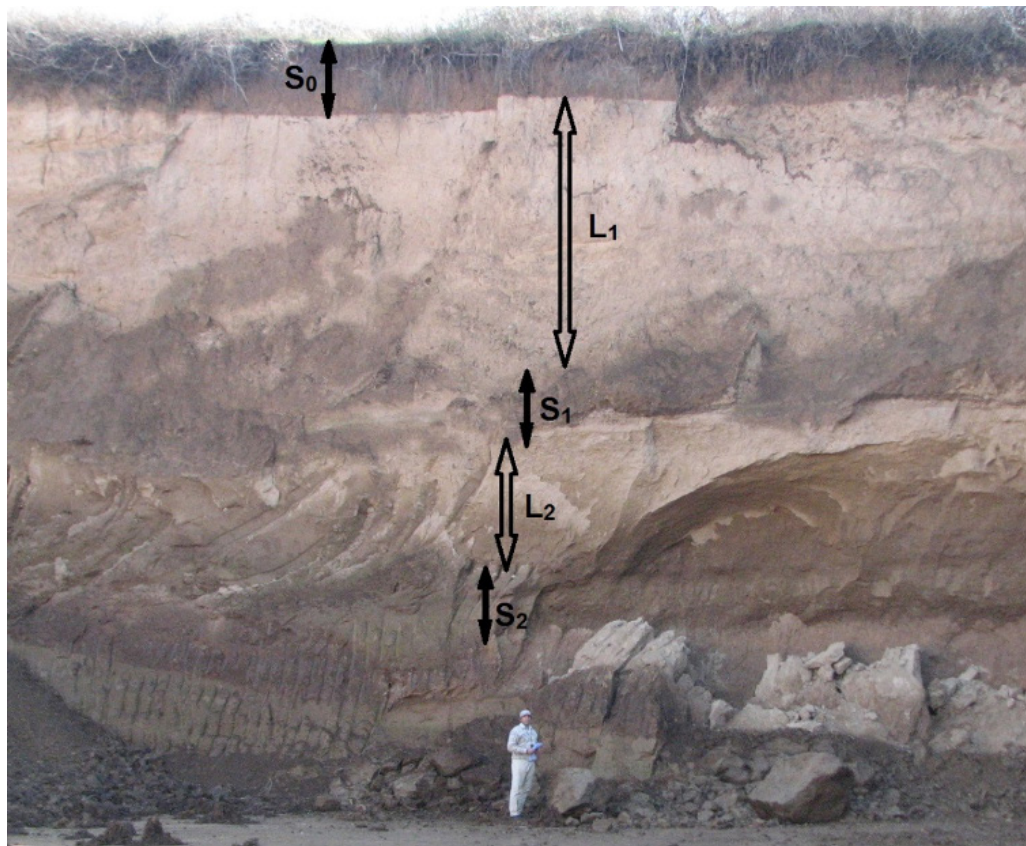


Figure 2. the loess/palaeosol sequence of Kolet section, at Neka, Mazandaran Province, northern of Iran. Black color arrows show two loess sub-divisions (L1 and L2). Upper Palaeosol (S1) is limited between two red lines; and Lower Palaeosol (S2) is under white line; and Recently Soil sub-division (S0) is marked on top, with yellow line (Haskouei and Alimohammadian, 2020).

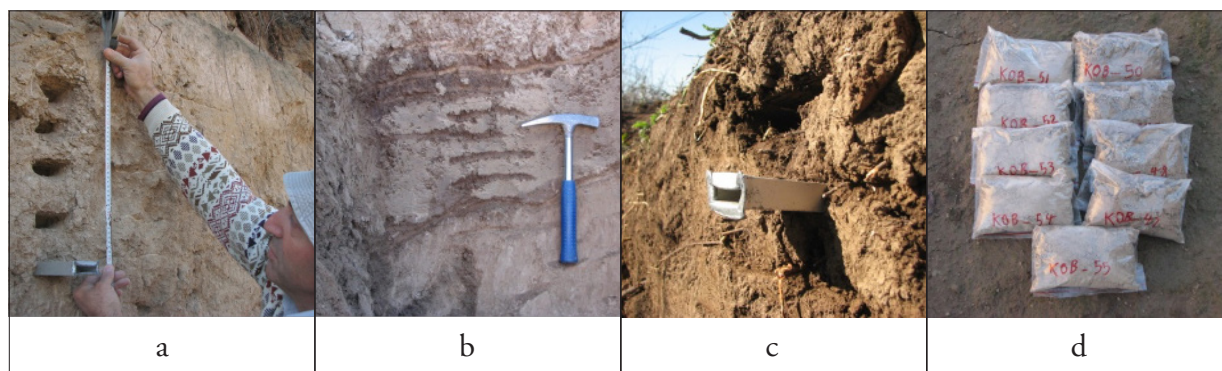


Figure 3. sampling of loess/paleosol to exactly 117 packs. (a) 10 cm intervals for loess units; (b) 5 cm intervals for paleosol; (c) a good view of Recent Soil and 5 cm intervals for packing ; (d) some pack samples of loess deposits during field working and packing.

Magnetization (IRM) curves acquired in 13 incremental steps up to a maximum field of 800mT, using Pulse Magnetizer (MMPM10). Hence, the intensity of the magnetic field gradually was increased, from 10 mT to 2 T, on 13 steps; and NRM of samples were measured each time, again and again, to calculate Saturation Induced Remnant Magnetization (SIRM). Also, to reveal the presence and kind of magnetic minerals, the AF demagnetization experiments have been applied by using an Alternative Field Demagnetizer, and instantly, the variation of remnant magnetism of samples have been measured again, using a spinner magnetometer. Furthermore, magnetically parameters like S-ratio, HIRM, and S-0.3T were estimated (Tab. 1) to quantify the relative and absolute concentrations of antiferro-magnetic minerals (e.g., hematite and goethite). It should be noted that, in addition to AF demagnetization experiment, thermomagnetic analysis have been applied aside from the magnetic mineralogy experiment, to confirm the presence and kind of magnetic minerals, using Multi-Function Kappabridge and a thermal furnace is referred to as CS-3.

Also, Magnetic susceptibility of bulk samples, ( $\chi$ ), was measured as main parameter to reconstruct paleoclimate changes, using Multi-Function Kappabridge (MFK1-A). It measured for 117 individual samples were collected from about 10 m profile of Loess/palaeosol sequence (Fig. 4).

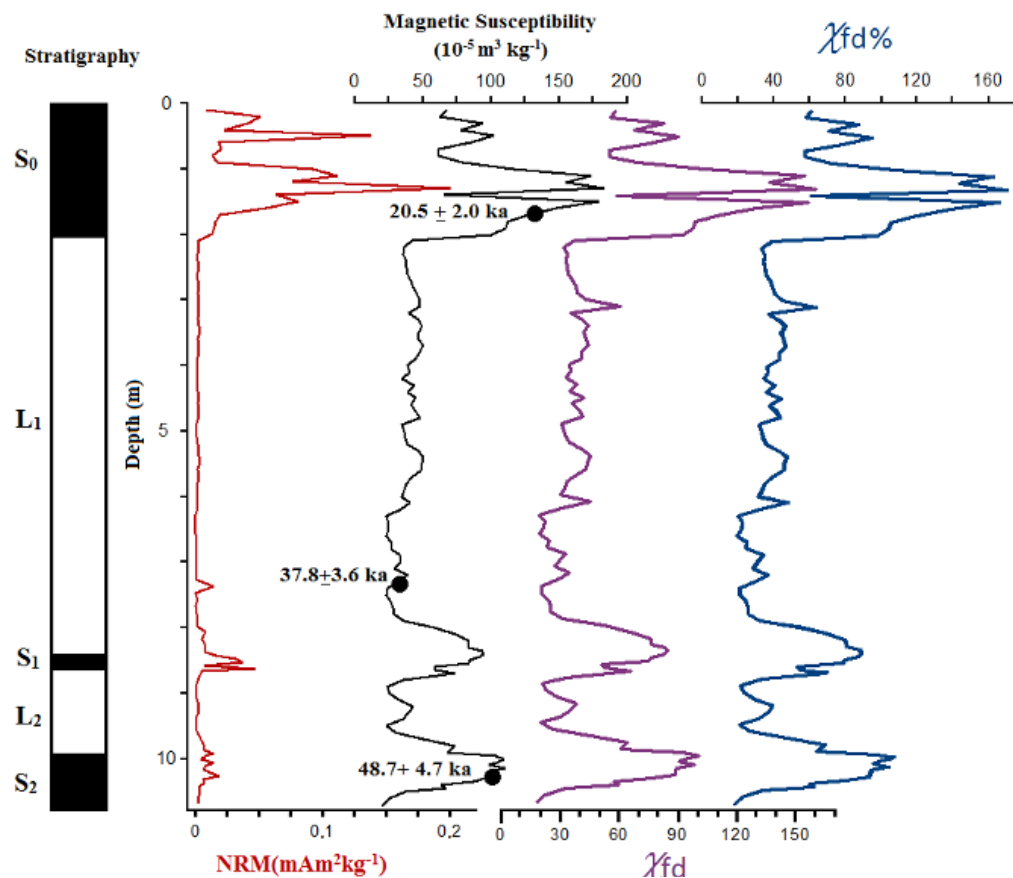


Figure 4. Lithology, Natural Remnant Magnetization (NRM), and Magnetic Susceptibility ( $\chi$ ), Frequency Dependent Susceptibility ( $\chi_{fd}$ ) and  $\chi_{fd}\%$  of the loess profile from Kolet Section, at Neka, north-east of Iran.  $\chi_{fd}$  is sensitive to the absolute concentration of superparamagnetic particles; and  $\chi$  is contributed from both aeolian and pedogenic particles; and  $\chi_{fd}\%$  is sensitive to the grain size distribution of superparamagnetic particles. OSL dates (solid circles) for loess/palaeosol sequence are from Kehl, *et al.*, (2005). Please refer to text for further description.

Totally, to confirm magnetical capacities of Neka loess magnetical proxies were investigated, such as:

- 1) Curved Magnetic Susceptibility ( $\chi$ ) to reveal cool/arid (=glacial/perglacial) and humid/warmer (=interglacial) cycles
- 2) Identity and demonization of size of magnetic minerals by plotting SIRM curve
- 3) Assessment of magnetic mineralogy in loess and paleosols by estimation of saturation ratio (S-ratio).
- 4) Investigating of the presence of magnetical particles like magnetite, maghemite and other iron-bearing minerals, to identification of magnetical capacities of loess/paleosol sequences
- 5) Plotting HIRM and cure to showing the presence of high and low coercivity minerals
- 6) Plotting  $\chi_{fd}\%$  and  $\chi_{fd}$  parameters to reveal presence of viscous magnetical component and grains.

**Table 1.** Magnetic analysis and measurement such as Magnetic Susceptibility (M.S.), Induced Remnant Magnetization (IRM), SIRM, S-ratio and etc. (LR and UR refer to Lower Red palaeosol and Upper Red palaeosol sub-divisions, respectively). Please refer to text for further description.

Samples No.	Depth (cm)	S-ratio	$\chi$ ( $10^{-5} \text{ m}^3 \text{ kg}^{-1}$ )	SIRM	S $-0.3\text{T}$	IRM $-0.3\text{T}$	HIRM
KO01	10	0.838721	67	5.506	0.080639	4.618	3.172
KO10	100	0.866991	117	8.225	0.066505	7.131	4.55
KO20	200	0.878472	100	7.776	0.060764	6.831	4.33
KOB10	310	0.850567	48	4.41	0.074717	3.751	2.63
KOB20	410	0.836097	41	4.161	0.081951	3.479	2.5
KOB30	510	0.837142	37	4.157	0.081429	3.48	2.5
KOB40	610	0.840844	41	4.216	0.079578	3.545	2.53
KOB50	710	0.851059	29	4.109	0.074471	3.497	2.5
KOB60	810	0.835368	74	6.961	0.082316	5.815	3.9
KOB66UR	850	0.842847	85	7.165	0.078576	6.039	4
KOB70	870	0.821962	73	5.628	0.089019	4.626	3.225
KOB80	970	0.795291	50	4.162	0.102355	3.31	2.5
KOB83LR	995	0.841182	103	6.498	0.079409	5.466	3.669
KOB90LR	1030	0.851347	96	6.902	0.074326	5.876	3.876
KOB97	1070	0.754974	21	2.865	0.122513	2.163	1.81

## RESULTS

- 1) The  $\chi$  values show prominent peaks for the three well developed soil and paleosol horizons, (S0), (S1) and (S2); In contrast, the  $\chi$  curve for Upper Loess (L1) is relatively smoothed. The second Loess horizon (L2), in the 860-990 cm interval, corresponds to a moderate magnetic susceptibility peak (Fig. 4).
- 2) As figure 4, magnetic enhancement (pedogenic ferrite formation) is evident from increased values of  $\chi$  and  $\chi_{fd}\%$ ; and Frequency Dependent Susceptibility ( $\chi_{fd}$ ) [percentage or  $m^3kg^{-1}$ ] is variation in  $\chi$  between low (0.47 kHz) and high frequencies (4.7 kHz).
- 3) There is determined for 15 representative samples spread throughout the profile (Tab. 1). All samples reach their ultimate maximum values in a field of 300 mT. The backfield necessary to reduce the saturation IRM (SIRM) to zero) fall in the range -30 to -60 mT for most of samples, while the SIRMs themselves range from 2.8 to 8.2  $mA\ m^2\ kg^{-1}$  (Tab. 1).
- 4) To confirm the presence of ferromagnetic minerals, IRM acquisition experiments were carried out (Fig. 5 and 6). Samples containing ferromagnetic minerals (magnetite) are completely saturated when the magnetic field reaches to less than 2 Tesla (2000 ml); as can be seen on Fig. 5, samples contain ferromagnets particles show steep increases in magnetization with applied field, until reaching saturation magnetization (SIRM).
- 5) According to figure 6, the discontinuity of the magnetic field line, in the range of -30 to -60 mT, where the magnetic field line is near to reach to zero, indicates the presence of magnetic minerals like magnetite and maghemite. Also, the acquisition (forward direction) and demagnetization (backfield) curves are all similar and are dominated by low-coercivity minerals. All samples reach at least 90 percent of their ultimate maximum values in a field of 300 mT.
- 6) In figure 7, red diagram is HIRM with sharp increases in three maximum points of the cure for the three well developed soil and paleosol horizons, (S0), (S1) and (S2)
- 7) Variations of the SIRM showed that the concentration of total ferrimagnetic (ferromagnetic) a material in the paleosols is enhanced (Fig. 7, green colored diagram).
- 8) The results of thermomagnetic analysis reveal the presence of magnetite as a ferromagnetic (ferrimagnetic) mineral. It is expectable that the ferromagnetic minerals in the magnetic field saturate with less than 1 Tesla for Kolet samples by figuring black colored diagram in figure 7.
- 9) Total decreasing S-0.3T (from 0.06 to 0.12 A/m) versus total increasing HIRM (from 2 to 5 A/m), shows the amount of low coercivity minerals (including magnetite and maghemite) in the paleosols is much less than high coercivity minerals; and to the contrary, the amount of low coercivity minerals in loess horizons, is much more than high coercivity minerals (Fig. 7).
- 10) All data and results of magnetism methods, above all variation of Magnetic susceptibility (MS) curve confirm loess-paleosol sequences of Kolet section as suitable sediments with enough magnetic particles capacity (Fig.8).



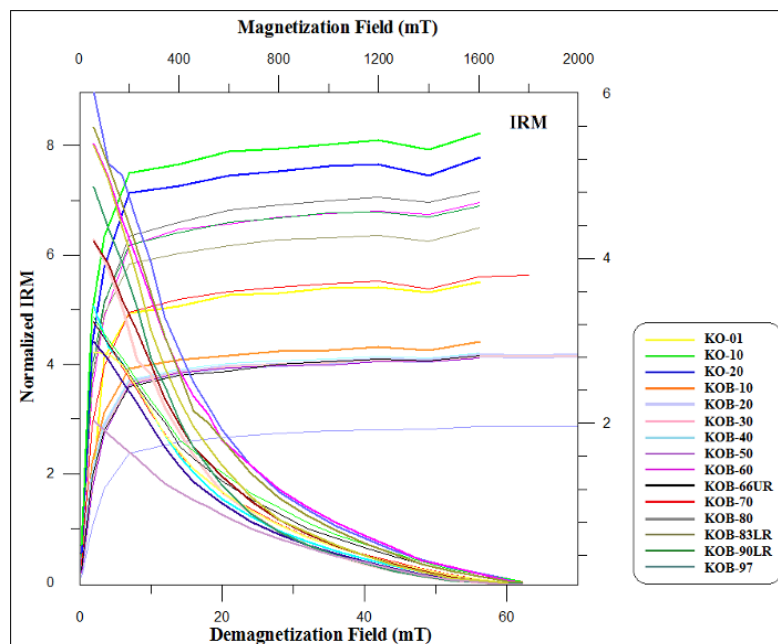


Figure 5. Variations of the Isothermal Remnant magnetization (IRM) versus demagnetization field, for 15 samples in Tab. 1; the rising lines on the left of the graph, starting from zero, curved near 300mT which represent the magnetic saturation of the samples; completely saturation of Kolet samples, acquired at about 1600 mT; and the downward-curved lines to the right of the graph, which are zero at about 60 degree, indicating the AF demagnetization of samples.

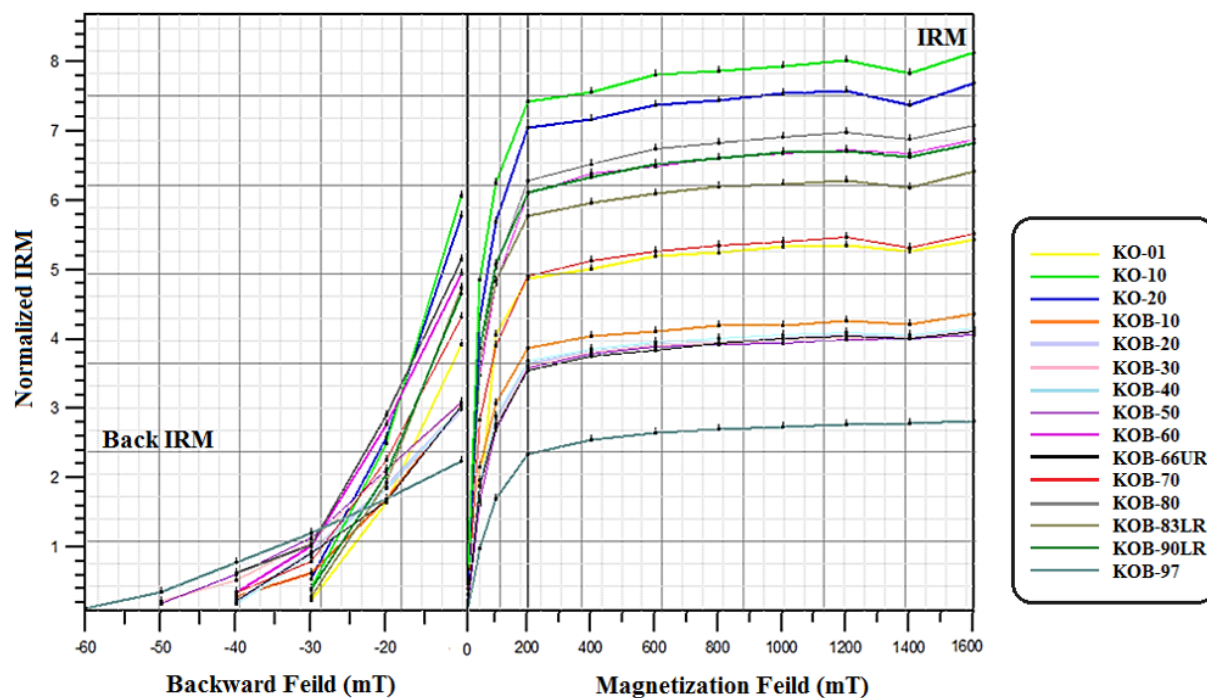


Figure 6. Variations of the Isothermal Remnant magnetization (IRM) versus backward field, for 15 samples in Tab. 1; the rising lines on the right of the graph, starting from zero, curved near 300 mT which represent the magnetic saturation of the samples; and the downward-curved lines to the left of the graph, which are zero in the range of -30 to -60 mT, indicating the back IRM.

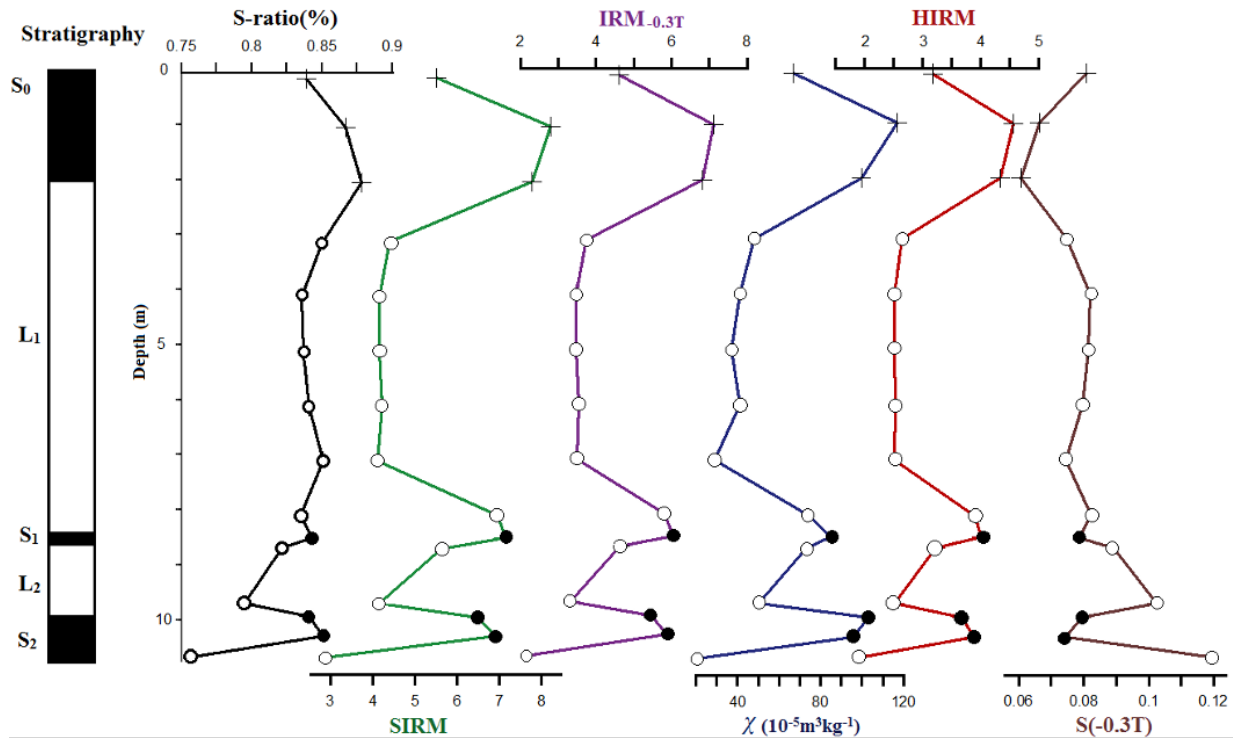


Figure 7. Variations of the IRM saturation ratio (S ratio %), and SIRM (IRM at 2T), Magnetic Susceptibility ( $\chi$ ), and IRM0.3T, and HIRM and the mineral-magnetic parameter  $S-0.3T$ , for 15 selected samples (Tab. 1), in the Kolet Loess-Paleosol sequence. Open circles: loess data, closed circles: paleosol data, crossed-out symbols: Recent Soil data. The IRM-0.3T denotes 0.3T back-field IRM values. Please refer to text for further description.

## DISCUSSION

Many environmental scientists are familiar with the use of one magnetic parameter, magnetic susceptibility, measurements of magnetic susceptibility are normally just the first, and most basic, step in characterising the magnetic properties of any sample (Maher, 2011). The very comprehensive and detailed study of Liu *et al.*, (1985) verified that highs and lows of the susceptibility curves are closely correlated with the occurrence of paleosols and loess layers, respectively (Heller and Liu, 1984; Heller *et al.*, 1991). Briefly, Less-weathered loess sequences, therefore, represent an arid and probably cool (=glacial/perglacial) climate during their accumulation, while the paleosols correspond to a more humid and warmer (=interglacial) climate (Akram, *et al.*, 1998).

Maher (1998) mentioned that Magnetite and maghemite are responsible for most of the signal because their susceptibility is three orders of magnitude greater than that of other iron-bearing minerals such as goethite, hematite, lepidocrocite and ferrihydrite.

IRM and back-field IRM values yield useful parameters for estimating the enrichment of low coercivity or high coercivity minerals in the samples. To make a simple statement, the IRM and back-IRM acquisition experiments acquired under the 2.5T revealed the presence of magnetite/maghemite along with some high coercive mineral, maybe goethite. Also, saturation isothermal Remnant magnetization (SIRM) crossover plots are a simple way of determining the identity and domain size of magnetic minerals, through the use of SIRM acquisition and demagnetization curves

and the position of the crossover point of the curves. Also, SIRM is a concentration-dependent parameter, i.e. it is high if the amount of ferromagnetic material present is high and vice versa (Szabo and Cioppa, 2004; Akram *et al.*, 1998).

Jin and Liu (2011) mentioned, whenever the IRM acquisition curves with similar shapes for all samples; and it climbs rapidly below 200 mT and reaches approximate saturation at about 300 mT; this behavior reveals the existence of soft magnetic minerals, such as magnetite and/or maghemite. They suggested that for loess samples, the IRM curves show slight increases from 300 mT up to 2 T, indicating presence of hard magnetic components, such as hematite and/or goethite.

In the other words, the sudden rise below 300 mT in all of the IRM acquisition curves indicates the presence of low coercivity minerals, like magnetite and/or maghemite. The unsaturated component (>300 mT) is carried by a high coercivity mineral, possibly goethite (Akram, *et al.*, 1998).

The saturation ratio (S-ratio) is a parameter to assess magnetic mineralogy in loess and paleosols; and where "S" is the absolute value of the IRM remaining after exposure to a reversed field of 0.3 T divided by the saturation IRM (or SIRM), which is usually acquired in a field of 1–2T. This parameter is calculated from  $IRM-0.3T/SIRM$  and represents the properties of magnetic minerals; and it is also serves as a measure of the proportion of high coercivity minerals (i.e., hematite and goethite) to low coercivity minerals (i.e., magnetite and maghemite) in a material (King and Channell, 1991; Roberts *et al.*, 1995; Verosub and Roberts, 1995). For most samples, the "S" values are close to 1, suggesting low-coercivity and ferri-magnetic mineralogy (Deng *et al.*, 2004; Akram *et al.*, 1998).

Next parameter is HIRM, a measure of the concentration of high coercivity minerals which its values become large if high coercivity minerals are relatively abundant. Another parameter,  $S-0.3T$  is a contrasting measurement to indicate the relative abundance of low coercivity mineral (Bloemendal *et al.*, 1992; Akram *et al.*, 1998). Sharp increases in magnetic susceptibility and in HIRM indicate enhanced aeolian influx of ferrimagnets and of haematite/goethite, respectively (Maher, 2011).

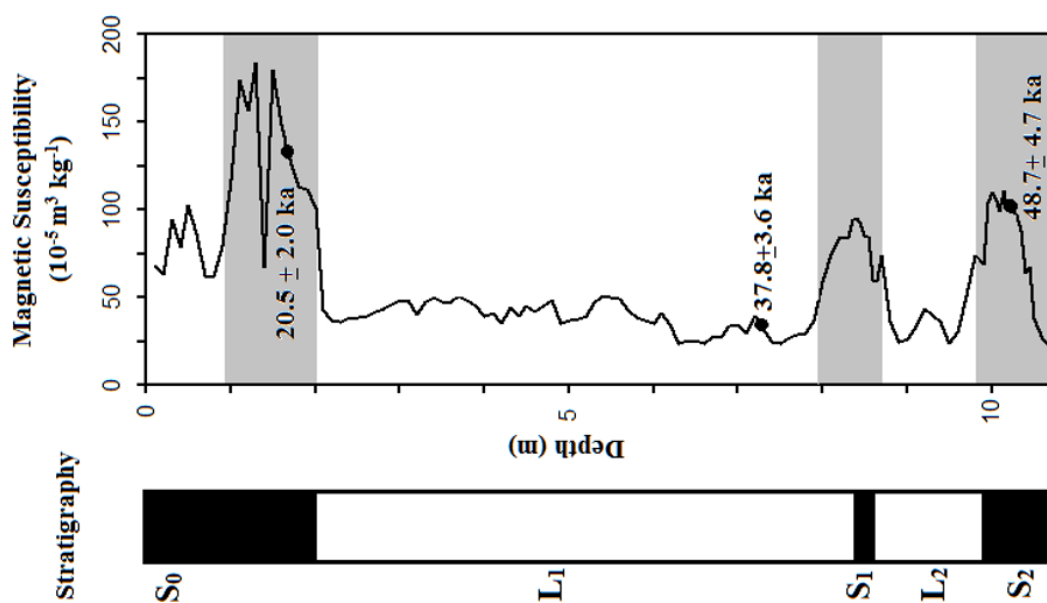


Figure 8. Variation of MS for loess-paleosol sequences of Kolet section, NE of Iran.

Also, it is well accepted that whenever  $\chi_{fd}\%$ , measured between  $\sim 10\%$  or  $5-10\%$ , it would indicate a large fine viscous (magnetite) component of SP range; and  $\chi_{fd}$  indicates viscous grains at the superpara-magnetic/stable single-domain boundary; and  $\chi_{fd}\%$  is a sensitive parameter for detecting the presence of SP grains in soils (Maher, 1988, 2011). In the other words,  $\chi_{fd}$  is sensitive to the absolute concentration of SP particles;  $\chi$  is contributed from both aeolian and pedogenic particles; and  $\chi_{fd}\%$  is sensitive to the grain size distribution of SP particles. Hence, Very special adjustment of the grain size distribution is needed to keep both the linear relationship between  $\chi_{fd}$  and  $\chi$  and the constant  $\chi_{fd}\%$  (Liu *et al.*, 2004c).

## CONCLUSION

- (1)  $\chi$  and  $\chi_{fd}$  and  $\chi_{fd}\%$  show a perfect linear correlation and a high degree of similarity, in their variations and as we mentioned before, the  $\chi$  values show prominent peaks for the three well developed soil and paleosol horizons, Recent Soil (S0), Upper Paleosol (S1) and Lower Paleosol (S2); which refer to the presence and concentration of single domains magnetic minerals such as magnetite and maghemite.
- (2) The results of Environmental magnetism techniques confirmed increasing/decreasing of magnetic susceptibility plot, as instance the results of the magnetic mineralogy experiment indicated the presence of ferromagnetic such as magnetite in the samples, which is the main factor of magnetic property in loess/paleosol sequence. Also, IRM and SIRM diagrams, and variations of magnetically parameters like HIRM and S-0.3T indicated the presence of low coercivity minerals such as magnetite in loess accumulations more than high coercivity minerals. The presence of high coercivity minerals like hematite, indicate weathered conditions for paleosols horizons. On the other hand, the results of both Back-field and Frequency Dependent Susceptibility ( $\chi_{fd}$ ) diagrams indicated the presence of single domains magnetic minerals like magnetite.
- (3) The obtained magnetic data indicate that over the past 50 ka, there have been at least two glacial/interglacial periods in the study area and since last 20 ka, there was no glaciations in the study area to produce loess deposits. The  $\chi$  values show prominent peaks for the three well developed soil and paleosol horizons, Recent Soil (S0), Upper Paleosol (S1) and Lower Paleosol (S2); which probably refer to warmer and wetter conditions of interglacial periods.
- (4) Increasing/decreasing of magnetic susceptibility probably is coinciding with palaeosol/loess and interglacial/glacial cycles, respectively, which means probably Loess was transported and deposited during cooler, drier periods; after then paleosols formed when the climate became warmer and wetter in northern Iran.

## ACKNOWLEDGEMENTS

The authors gratefully acknowledge support of the Head of the Department of Geology and Exploration, Mineralogy of the country, Head of Geosciences Research Institute, Managing Director of Marine Geology and other colleagues, Managing Director of Laboratory Affairs of the Geological Survey and my dear colleagues, including Ms. Dehghan, Ms. Rahimzadeh and Mr. Moeini for their support and laboratory facilities.



## REFERENCES

- Akram, H., Yoshida, M., & Ahmad, M.N., (1998). Rock magnetic properties of the late Pleistocene Loess–Paleosol deposits in Haro River area, Attock basin, Pakistan: Is magnetic susceptibility a proxy measure of paleoclimate. *Earth Planets Space*, Vol. 5, pp. 129–139
- Barbier, R., (1960). Decouverte de l'effet d'une ancienne vallée de remblai dans le cours inférieur du Se'fid-Roud (versant nord de l'Elbourz, Iran). *Comptes Rendus de l'Academie des Sciences Paris* 250, 1097–1098.
- Bloemendal, J., J. W. King, F. R. Hall, and S. J. Doh, (1992). Rock magnetism of late Neogene and Pleistocene deep-sea sediments: Relationship to sediment source, diagenetic processes, and sediment lithology, *J. Geophys. Res.*, 97, 4361–4375.
- Bobek, H. (1937): Die Rolle der Eiszeit in Nordwestiran. – Z. Gletscherk., 25: 130-183, 13 Abb., 17 Photos; Berlin Zehlendorf.
- Deng, C., Zhu, R., Verosub, K.L., Singer, M.J., and Vidic, N.J., (2004). Mineral magnetic properties of loess/paleosol couplets of the central loess plateau of China over the last 1.2 Myr. *Journal of Geophysical Research*, Vol. 109, pp. 1–109.
- Ehlers, E. (1971): Sudkaspisches Tiefland (Nordiran) und Kaspisches Meer. Beiträge zu ihrer Entwicklungsgeschichte im Jung- und Postpleistozän. – Tübinger Geogr. Stud., 44, 184 S., 54 Fig., 29 Photos; Tübingen.
- Frechen, M., Dodonov, A., (1998). Loess chronology of the middle and upper Pleistocene in Tajikistan. *International Journal of Earth Sciences* 87, 2–20.
- Frechen, M., Oches, E.A., Kohfeld, K.E., (2003). Loess in Europe – mass accumulation rates during the last glacial period. *Quaternary Science Reviews* 22, 1835–1857.
- Frechen, M., Zander, A., Zykina, V., Boenigk, W., (2005). The loess record from the section at Kurtak in Middle Siberia. *Palaeogeography, Palaeoclimatology, Palaeoecology* 228, 228–244.
- Frechen, M., Kehl, M., Rolf, C., Sarvati, R., Skowronek, A., (2009). Loess chronology of the Caspian Lowland in Northern Iran. *Quaternary International* 198, 220–233.
- Haskouei F. M., and Alimohammadian, H., (2020), The Magnetic Susceptibility of the Late Quaternary Loess in North-East of Iran and Its Correlation with Other Palaeoclimatic Parameters: World Academy of Science, Engineering and Technology, *International Journal of Geological and Environmental Engineering*, Vol:14, No:2, Fig. 1.
- Heller, F., Liu, T.S., (1984). Magnetism of Chinese Loess deposits. *Geophysical Journal of the Royal Astronomical Society* 77, 125.
- Heller, F., Liu, X.M., Liu, T.S., Xu, T.C., (1991). Magnetic-susceptibility of Loess in China. *Earth and Planetary Science Letters* 103, 301–310
- Jin, C., and Liu, Q., (2011). Remagnetization mechanism and a new age model for L9 in Chinese loess. *Physics of the Earth and Planetary Interiors*. doi: 10.1016/j.pepi.2011.03.010
- Kabirnia, A. R., Asadi, A., Khan Nazari, N. E., Vakili, F., Bahremand, M., Masoumi, R. And Qomishi, A., (2003). 1:100,000 scale geology map of Sari, Geological Survey of Iran (in Persian).
- Karimi, A., Frechen, M., Khademi, H., Kehl, M., Jalalian, A., (2009). Chronostratigraphy of loess deposits in northeast Iran, *Quaternary International*, 1–9. doi:10.1016/j.quaint.2009.08.002
- Kehl, M., Sarvati, R., Ahmadi, H., Frechen, M., Skowronek, A., (2005). Loess paleosol–sequences along a climatic gradient in Northern Iran. *Eiszeitalter und Gegenwart* 55, 149–173.
- Kehl, M., Sarvati, R., Ahmadi, H., Frechen, M., Skowronek, A., (2006). Loess/paleosol–sequences along a climatic gradient in Northern Iran. *Eiszeitalter und Gegenwart* 55, 149–173.
- King, J.W., and Channell, J.E.T., (1991). Sedimentary magnetism, environmental magnetism, and magnetostratigraphy. *Review Geophysical*, Vol. 34, pp. 358–370
- Liu, T. S. *et al.*, (1985). Loess and the Environment. *China Ocean Press*, Beijing, 1-251.

- Liu, Q.S., Jackson, M.J., Yu, Y., Chen, F., Deng, Ch., and Zhu R., (2004c). Grain size distribution of pedogenic magnetic particles in Chinese loess/paleosols. *Geophysical Research Letters*, 31, 506–514
- Machalett, B., Frechen, M., Hambach, U., Oches, E.A., Zöller, L., Markovic, S.B., (2006). The loess sequence from Remisowka (northern boundary of the Tien Shan Mountains, Kazakhstan) – part I: luminescence dating. *Quaternary International* 152/153, 192–201.
- McLaren, P., (1980). "An Interpretation of Trends in Grain Size Measures". *Journal of Sedimentary Petrology* 51(2), 611–623.
- Maher, B. A., (1988). Magnetic properties of some synthetic sub-micron magnetites. *Geophys. J.*, 94, 83 – 96.
- Maher, B.A., (1998). "Magnetic properties of modern soils and Quaternary loessic paleosols:Paleoclimatic implications", *Palaeogeography Palaeoclimatology Palaeoecology*, Vol. 137, 25–55.
- Maher, B. A., (2011). The magnetic properties of Quaternary Aeolian dusts and sediments, and their Palaeoclimatic significance. *Aeolian Research*, 145–387.
- Roberts, A.P., Cui, Y., and Verosub, K.L., (1995), Wasp–waisted hysteresis loops: Mineral magnetic characteristics and discrimination of components in mixed magnetic systems. *Journal of Geophysical Research*, Vol. 100, pp. 17909–924
- Robinson, S. G., (1986). The late Pleistocene paleoclimatic record of North Atlantic deep-sea sediments revealed by mineral-magnetic measurements, *Phys. Earth Planet. Inter.*, 42, 22–47.
- Stahl, A.F.v. (1923): Zur Frage der Lössbildung. – Z. dt. geol. Ges., 74: 320–325; Stuttgart.
- Szabo, E.; and Cioppa, M. T. (2004). Saturation Isothermal Remnant Magnetization Crossover Plots: Case Study for a Bimodal Population of Low and High Coercivity Magnetic Minerals. American Geophysical Union, Spring Meeting 2004, abstract id. GP34A-06.
- Tietze, E. (1877): Über Lössbildung und über die Bildung von Salzsteppen. – Verh. k. u. k. geol. Reichsanstalt, 15: 264–268; Berlin.
- Verosub, K.L., and Roberts, A.P., (1995), Environmental magnetism: Past, present, and future. *Journal of Geophysical Research*, Vol. 100, pp. 2175–2192