

Differentiation and genetic diversity of *Phaseolus lunatus* wild populations from Chiapas, Mexico, and their genetic relationships with MI and MII groups

PEDRO JESÚS RUIZ-GIL¹, GABRIEL CHEPE-CRUZ², RUBÉN HUMBERTO ANDUEZA-NOH³, MATILDE MARGARITA ORTIZ-GARCÍA¹, JAIME MARTÍNEZ-CASTILLO¹ *

Botanical Sciences
94 (4): 701-712, 2016

DOI: 10.17129/botsoci.699

Abstract

Background: Understanding the genetic structure of wild relatives of domesticated species is crucial for its conservation and to elucidate the sites of crop domestication. Lima bean is one of the five domesticated *Phaseolus* species and Mexico is one of its centers of domestication. Recent studies showed the existence of two wild gene pools (MI and MII) of this species in Mexico and suggested that their genetic divergence occurred in southeast Mexico.

Question: Did MI and MII groups diverged around the Isthmus of Tehuantepec, Mexico?

Studied species: Lima bean: Neotropical plant species, herbaceous, with an annual/short life cycle and with autogamous tendency.

Study site and years of study: Seven wild populations were collected in 2012 in the State of Chiapas, México, area underrepresented in previous studies.

Methods: Genetic diversity and grouping patterns of collected populations and their relationship to MI and MII groups were analyzed at eight microsatellite loci.

Results: High genetic structure (F_{ST} : 0.42 to 0.96) and a high level of genetic diversity ($H_E = 0.48$) were found. The analyses, and presence of admixed populations in MI and MII, suggested that the genetic divergence of these groups is an ongoing process centered around the Isthmus of Tehuantepec.

Conclusions: Our results support the hypothesis that MI and MII groups diverged around the Isthmus of Tehuantepec; however, sampling should be increased both at population and genomic levels, to determine the precise organization of the genetic diversity of wild *P. lunatus* from Mexico.

Keywords: Genetic diversity, Genetic resources, Lima bean, Microsatellites, SSR markers, Wild relatives.

Diversidad y diferenciación genética de las poblaciones silvestres de *Phaseolus lunatus* de Chiapas, México, y sus relaciones genéticas con los grupos MI y MII

Resumen

Antecedentes: Entender la estructura genética de los parientes silvestres de las especies domesticadas es crucial para su conservación y para elucidar los sitios de domesticación de los cultivos. El frijol Lima es una de las cinco especies domesticadas del género *Phaseolus* y México es uno de sus centros de domesticación. Estudios recientes señalaron dos acervos genéticos silvestres (MI y MII) en México y sugirieron que su divergencia ocurrió en el sureste de México.

Pregunta: ¿Los grupos silvestres MI y MII divergieron alrededor del Istmo de Tehuantepec, México?

Especie en estudio: El frijol Lima es una especie Neotropical, herbácea, con ciclo de vida anual/corto y tendencia autógama.

Sitio y años de estudio: Siete poblaciones silvestres fueron colectadas en 2012 en el Estado de Chiapas, México, área que fue subrepresentada en estudios previos.

Métodos: Se analizó la diversidad genética y los patrones de agrupamiento de las poblaciones colectadas y su relación con los grupos MI and MII, usando ocho loci de microsatélites.

Resultados: Se encontró una estructura genética alta (F_{ST} : 0.42 a 0.96) y niveles altos de diversidad genética ($H_E = 0.48$). Los análisis y la presencia de poblaciones mezcladas en MI y MII sugieren que la divergencia de estos grupos aun continua alrededor del Istmo de Tehuantepec.

Conclusiones: Nuestros resultados apoyan la hipótesis de que MI y MII divergieron alrededor del Istmo de Tehuantepec; sin embargo, hay que incrementar el muestreo, tanto a nivel genómico como poblacional, para determinar la organización precisa de la diversidad genética de *P. lunatus* silvestre en México.

Palabras clave: Diversidad genética, Frijol Lima, Marcadores SSR, Microsatélites, Parientes silvestres, Recursos Genéticos.

¹ Centro de Investigación Científica de Yucatán, A. C. (CICY). Mérida, Yucatán, México.

² Instituto Tecnológico Superior de Zacapoaxtla. Zacapoaxtla, Puebla.

³ Instituto Tecnológico de Conkal. Conkal, Yucatán.

* Corresponding author: jmartinez@cicy.mx

Knowledge of the genetic diversity as well as the natural range of wild relatives of domesticated species is crucial for germplasm conservation (Rao & Hodgkin 2002), as this will allow adequate procedures for sampling design and development of effective management strategies for conservation of endangered populations (Hamrick 1983, Hedrick 2001). Also, knowing the genetic structure of wild relatives of domesticated species is essential to generate basic information about the sites of domestication of crops, because, in combination with archeological and historical evidence, it can provide insight into the geographic and temporal details of domestication to reveal where, when, and how many times a crop was domesticated (Luo *et al.* 2007, Kwak & Gepts 2009, Meyer *et al.* 2012).

Lima bean (*Phaseolus lunatus* L.) is one of five species of the genus *Phaseolus* that was domesticated at least 6,000 years ago (Kaplan & Lynch 1999). *Phaseolus lunatus* consists of two botanical varieties: *P. lunatus* var. *silvester* Baudet, which comprises only wild populations; and *P. lunatus* var. *lunatus*, which includes only cultivated populations (Baudet 1977). Recent molecular evidence indicates that the primary gene pool of Lima bean is composed of three main genetic groups: the Andean group (AI); the Mesoamerican MI group and the Mesoamerican MII group (Serrano-Serrano *et al.* 2010, 2012, Andueza-Noh *et al.* 2013, 2015). Within each of these groups there are both wild and cultivated populations, and there is evidence of independent domestication events in each of these groups (Debouck *et al.* 1987, Gutiérrez-Salgado *et al.* 1995, Fofana *et al.* 1997, Maquet *et al.* 1997, Caicedo *et al.* 1999, Andueza-Noh *et al.* 2013).

For *Phaseolus lunatus* var. *silvester* from Mexico, the MI group is distributed in the western part of the country, while the MII group is found in the Gulf and southeastern coast of Mexico, across Central America and South America, reaching Argentina (Serrano-Serrano *et al.* 2012, Andueza-Noh *et al.* 2013). Martínez-Castillo *et al.* (2014) indicated the existence of two groups within MI (MIA and MIB), as well as evidence that the Isthmus of Tehuantepec in southern Mexico could be the area where MI and MII diverged. Though the west central Mexico and the region between Guatemala and Costa Rica are potential areas of domestication for MI and MII, respectively, the exact areas of domestication are still unknown for both groups (Serrano-Serrano *et al.* 2012, Andueza-Noh *et al.* 2013).

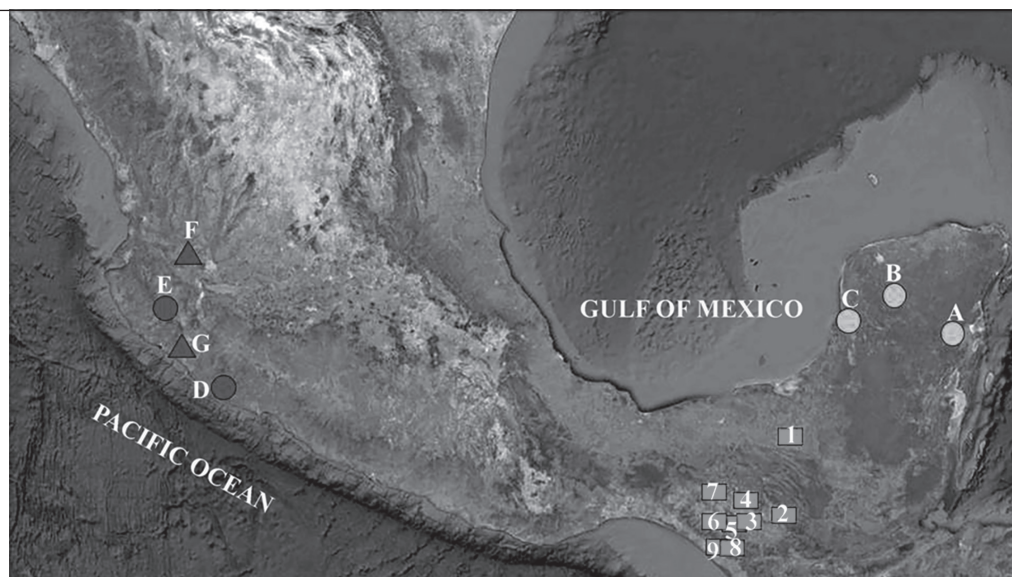
Microsatellites (SSR, Simple Sequence Repeats) are codominant molecular markers, often highly polymorphic and discriminating, which are distributed along the genomes (Tautz & Renz 1984). These markers have proved a useful tool for determining the genetic structure in many plant species (Mattioni *et al.* 2013, Lator *et al.* 2014, Noormohammadi *et al.* 2014, Shivaprakash *et al.* 2014). In wild *Phaseolus lunatus*, SSRs have been used to determine the genetic structure in populations of Costa Rica and Mexico, showing high genetic differentiation between wild populations of *P. lunatus* and clustering patterns based on geographical isolation and low levels of gene flow (Ouédraogo *et al.* 2005, Martínez-Castillo *et al.* 2006, 2014).

Despite the great efforts made to collect wild populations of *Phaseolus lunatus* from Mexico (Martínez-Castillo *et al.* 2014), further collection from its wide geographical distribution is needed to accurately examine the genetic structure of this species. Knowing the genetic diversity of wild populations of *P. lunatus* in Mexico is relevant because this country has been identified as an important center of genetic diversity for this species (Martínez-Castillo *et al.* 2004, 2008, 2014), as well as one of its centers of domestication (Serrano-Serrano *et al.* 2012, Andueza-Noh *et al.* 2013, 2015). The main goal of this work is to contribute to the knowledge of the genetic organization of wild populations of *P. lunatus* in Mexico, using a molecular study of newly collected populations in the state of Chiapas. Although Chiapas is located in the region where possibly genetic differentiation occurred between MI and MII groups (Martínez-Castillo *et al.* 2014), previous studies had included only two wild accessions. So it was necessary to increase the number of samples from this region of Mexico to increase the understanding of the genetic differences between these two groups.

Materials and Methods

Plant material. Analysis included nine wild accessions of *Phaseolus lunatus* from the State of Chiapas, Mexico (Figure 1, Table 1); seven were new accessions collected *in situ* by Jaime Martínez-Castillo, and two accessions were obtained from the CIAT (International Center for

Figure 1. Geographic distribution of 16 wild accessions of *Phaseolus lunatus* used in the present study. Red squares, accessions of Chiapas; Green circles, accessions of MII; Blue circles, accessions of MIA; Blue triangles, accessions of MIB. Numbers and capital letters of each accession correspond to Table 1.



Tropical Agriculture) seedbank. One CIAT accession does not have information about the exact collection site.

To know to which genetic group (MIA, MIB or MII) belong the Chiapas accessions, we included as outgroups three wild accessions of MII group, two wild accessions of MIA group and two wild accessions of MIB. Molecular data of CIAT accessions collected in Chiapas and those of the accessions of the outgroups were obtained from Martínez-Castillo *et al.* (2014). Taking advantage of the existence of the original gels reported in Martínez-Castillo *et al.* (2014), these analyzed them again, and banding patterns observed in these gels were compared with those found in the new gels, thus standardizing the criteria for reading.

DNA extraction. DNA was extracted from 10 seeds per accession, except for the JMC1391 accession, for which only 5 seeds were considered, due to germination problems (Table 1). Germination was conducted in trays under greenhouse conditions and the DNA was extracted from young leaves according to the protocol of CTAB (Doyle & Doyle 1987). The quality of

Table 1. Geographic data of nine wild accessions of *Phaseolus lunatus* from Chiapas, Mexico, and seven accessions analyzed by Martínez-Castillo *et al.* (2014) used as a outgroup.

ID accession	Estate	Collected site	Latitude	Longitude	Altitude m.a.s.l.	Group
(1)JMC1388	Chiapas	Palenque	17.476111	91.965167	20	?
(2)JMC1394	Chiapas	Juquiltic	16.277222	92.440389	625	?
(3)JMC1392	Chiapas	Avila Camacho	16.123583	93.014889	634	?
(4)JMC1391	Chiapas	Primero de Mayo	16.151972	93.111806	637	?
(5)JMC1390	Chiapas	Villa Corzo	16.156722	93.239389	649	?
(6)JMC1393	Chiapas	Rivera de Cupía	16.657944	93.014861	417	?
(7)JMC1389	Chiapas	Nuevo Mexico	16.608417	93.428528	851	?
(8)G26739	Chiapas	Arriaga	16.033278	93.7	40	?
(9)G25218	Chiapas	-	-	-	1800	?
(A)JMC519	Quintana Roo	X-Hazil	19.3916	88.0741	25	MII
(B)JMC609	Yucatán	Xul	20.3017	89.4181	50	MII
(C)JMC747	Campeche	Bolonchén	19.8472	90.4867	41	MII
(D)JMC1145	Michoacán	Coalcomán	18.4647	103.541	30	MIA
(E)JMC1141	Jalisco	Purificación	19.6603	104.439	451	MIA
(F)ROL224	Jalisco	La Joya	20.834	103.967	1472	MIB
(G)G25231	Colima	Manzanillo	19.0333	104.216	3	MIB

extracted DNA was verified by gel electrophoresis 1 % agarose stained with ethidium bromide, and the DNA quantification was performed in a NanoDrop 1000 spectrophotometer (Thermo Scientific).

Microsatellite methods. Eight SSR loci reported as polymorphic to *Phaseolus lunatus* (Table 2) by Martínez-Castillo *et al.* (2014) were used for the molecular characterization. DNA amplification was done in 20 µl volume Polymerase Chain Reaction (PCR), consisting of 10X PCR buffer, 50 mM of MgCl₂, 10 mM of dNTP mix, 10 mM of primers, 5u/µl of Taq polymerase and 50 ng of DNA. The PCR program consisted of 35 cycles, each consisting of a denaturation step of 15 seconds at 94 °C, a step of alignment of 15 seconds at a temperature of alignment depending on the primers employed, an extension step of 15 seconds at 72 °C and a final extension of 5 minutes at 72 °C. The PCR amplification was done in a thermocycler GeneAmp PCR System 9700 (Applied Biosystems, Foster City, USA). A volume of 5 µL of formamide containing 0.45 % bromophenol blue and 0.25 % xylene cyanol was added to the PCR product and was denatured for a period of 5 min at 94 °C, then 5 µL of this reaction product was loaded on 5 % polyacrylamide gels (19:1 acrylamide-bisacrylamide) containing 5 M urea and 0.5X Tris-borate EDTA (TBE) buffer.

Electrophoresis was performed at 60 W constant power for 45 min to 1 h (SQ3 sequencer, Hoeffer Scientific Instruments, San Francisco, CA). The amplification products were visualized with the silver staining technique (Bassam *et al.* 1991). The size of the fragment was determined visually in base pairs (bp), using as reference a 10 bp molecular marker.

Population genetics analyses. Genetic relationships between the wild populations from Chiapas and MI and MII groups.- Genetic relationships were inferred using three procedures: 1) Assignment tests of individuals were made with STRUCTURE version 2.3.4 (Pritchard *et al.* 2000). We used the admixture model with correlated allele frequencies, 100,000 as a period of burn-in and 200,000 iterations after burn-in to allow the Markov chain to reach stationarity. To determine the optimal number of existing populations (K optimal), a total of ten independent simulations were run for each value of K, ranging from K = 1 to K = 16 (nine accessions from Chiapas plus seven accessions of the outgroups). With the output files generated by STRUCTURE, the optimal value of K was obtained using the method of Evanno (Evanno *et al.* 2005) and the STRUCTURE HARVESTER program (Earl and vonHoldt 2012). The graph generated by STRUCTURE was edited with PowerPoint 2013 (Microsoft, Redmond, Washington, USA).

Table 2. Characteristics of the eight microsatellite loci used in the molecular characterization of seven wild populations of *Phaseolus lunatus* from Chiapas, Mexico.

Locus	Sequence of SSR	5' a 3'	Primer sequence	Tm °C	Fragments (bp)
AG1	(GA) ₈ GGTA(GA) ₅	left right	CATGCAGAGGAAGCAGAGTG GACGCTCGTCGTTTCGAT	52	132-152-154
BM140	(GA) ₃₀	left right	CCTACCAAGATTGATTTATGGG TGCACAACACACATTAGTGAC	55	164-168-170-184
BM143	(GA) ₃₅	left right	ATGTTGGGAACCTTTTAGTGTG GGGAAATGAACAGAGGAAA	55	143-149-153-155- 167-169
BM154	(CT) ₁₇	left right	CTGAATCTAGGAACGATGACCAG TCTTGCACCGAGCTTCTCC	50	190-196
BM156	(CT) ₃₂	left right	CTTGTCCACCTCCCATCATAGC TGCTTGCATCTCAGCCAGAATC	52	219-225
BM164	(GT) ₉ (GA) ₂₁	left right	CCACCACAAGGAGAAGCAAC ACCATTCAAGCCGATACTCC	52	142
BM170	(CT) ₅ CCTT(CT) ₁₂	left right	AGATAGGGAGCTGGTGGTAGC AGCCAGGTGCAAGACCTTAG	50	167-171-175
BM211	(CT) ₁₆	left right	ATACCCACATGCACAAGTTTGG CCACCATGTGCTCATGAAGAT	52	194-200-208-220-224

Note: Tm, annealing temperature in degrees Celsius; BP, fragment size found in base pairs.

2) A dendrogram was generated using the Neighbor Joining (N-J) method, the genetic distance of Goldstein (Goldstein *et al.* 1995) and 1000 bootstraps, as implemented in the Populations program version 1.2.31 (Langella 1999). Dendrogram was visualized and edited using MEGA 5 (Tamura *et al.* 2011). 3) We also applied a Principal Coordinates Analysis (PCoA), which allows exploring clustering patterns of the samples without an a priori data, using each allele as an independent variable. This analysis was made using GenAlex 6 program (Peakall & Smouse 2012). Genetic structure and inbreeding.- Genetic structure was analyzed calculating F_{ST} between pairs of populations and a Mantel test (Mantel 1967, Sokal 1979) to determinate if there is a significant linear relationship between genetic distance and geographic distance among populations. These analyses were made with Arlequin ver. 3.5 (Excoffier *et al.* 2005). We estimated the inbreeding coefficients (F_{IS}) for each accession and if these values were different from zero ($\alpha=0.05$) using FSTAT program ver. 2.9.3.2 (Goudet 1995). Also, we did assignment tests of individuals and selection of optimal K using the same programs and specifications mentioned in the section of genetic relationships. For these analyses, we included only the populations of Chiapas, so STRUCTURE was only run from K =1 to K = 9. The assignment tests were also used to evaluate recent gene flow (ancestry) among populations of Chiapas.

Genetic diversity.- Genetic diversity was estimated considering two levels: all Chiapas and each accession. The estimates were percentage of polymorphic loci (%P), observed heterozygosity (H_O) and expected heterozygosity (H_E). These values were calculated with a level of polymorphism of 95 %, with Arlequin version 3.5 (Excoffier *et al.* 2005). Considering the existence of accessions with different sample sizes, we calculated the average number of alleles per locus (A) and the average number of unique alleles per locus (AU) using a rarefaction method implemented in the HP-Rare program ver. 1 (Kalinowsky 2005). Also, in order to evaluate the existence of a reduction in genetic diversity as a result of genetic bottlenecks, the Garza-Williamson (G-W) index (Garza & Williamson 2001) was calculated with Arlequin version 3.5 (Excoffier *et al.* 2005). Low values of this index suggest a higher probability of a recent genetic bottleneck in the population.

Results

Genetic relationships of populations from Chiapas with MI and MII groups. Evanno method indicated an optimum value of K = 3 for the 16 accessions analyzed. The assignment test of individuals based on K = 3 (Figure 2) grouped separately the three accessions of MII; the seven accessions of Chiapas that were collected *in situ*; and the accessions of MI together with the two accessions of Chiapas obtained from CIAT (G26739 y G25218).

The Neighbor Joining dendrogram showed two main groups (Figure 3): one group comprising six accessions of Chiapas and the three accessions of MII group (these ones formed a separate subgroup); the other group was integrated for the accessions of MI group (MIA y MIB) plus the two accessions of Chiapas obtained from CIAT; accession JMC1390 collected in Villa Corzo, Chiapas, did not show a clear assignment to either of the two main groups. All bootstrap values were below 50 %.

Figure 2. Assignment test of individuals of nine wild accessions of *Phaseolous lunatus* from Chiapas and seven wild accessions used as outgroups, using optimal K value and the STRUCTURE program. Numbers and capital letters of accessions correspond to Figure 1 and Table 1.

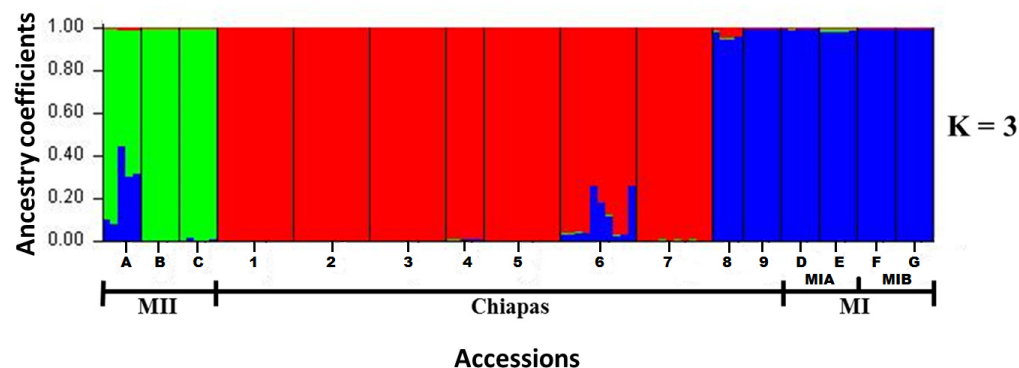
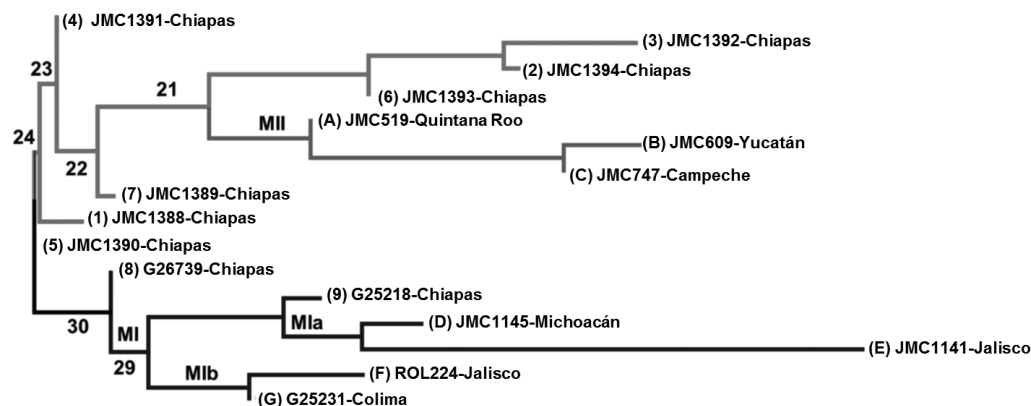


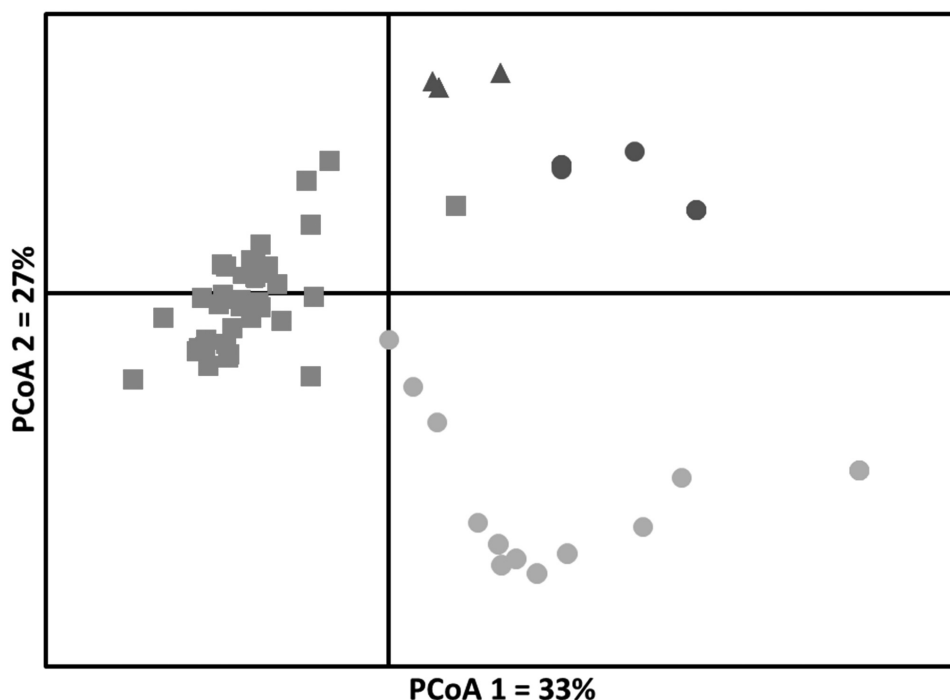
Figure 3. Neighbor Joining based on the genetic distance of Goldstein (1995) of nine wild accessions of *Phaseolus lunatus* from Chiapas and seven accessions used as outgroups, using eight SSR loci. Colors of the branches, numbers and capital letters into parentheses correspond to those observed in Figures 1 and 2, and Table 1.



The PCoA showed a general pattern of grouping based on the existence of Chiapas accessions, MI and MII groups, with a greater dispersion within MII (Figure 4). For this analysis, axes 1 and 2 comprised 33 % and 27 % of the total variation, respectively.

Genetic structure and inbreeding in wild Phaseolus lunatus from Chiapas. We found a high genetic differentiation between populations as paired F_{ST} values among samples ranged from

Figure 4. Principal Coordinates Analysis (PCoA) of nine wild accessions of *Phaseolus lunatus* from Chiapas and seven wild accessions from outgroups, using eight microsatellite loci. Red squares, accessions of Chiapas; Green circles, accessions of MII; Blue triangles, accessions of MIa; Blue circles, accessions of MIb. Symbols correspond to those showed in Figure 1. Color of the symbols correspond to those showed in Figures 1, 2 and 3.



0.42 to 0.96 (Table 3). A Mantel test does not indicate the existence of a strong geographic isolation among accessions ($r = 0.343$, $P = 0.08$). Five of the nine accessions analyzed had positive values of F_{IS} and significantly different from zero ($P \leq 0.05$) (Table 4), suggesting inbreeding in *P. lunatus* wild populations from Chiapas.

Evanno method indicated an optimum value of $K = 4$ for the nine accessions of Chiapas. Figure 5 shows the graph generated with STRUCTURE using $K = 4$. Based on the percentage of ancestry for each accession, four genetically distinct populations are integrated as follows: red population (accessions JMC1388, JMC1390 and JMC1391); green population (accession JMC1394); yellow population (accessions JMC1392 and JMC1389) and blue population (accessions G26739 and G25218). The JMC1393 accession was not assigned to a specific population

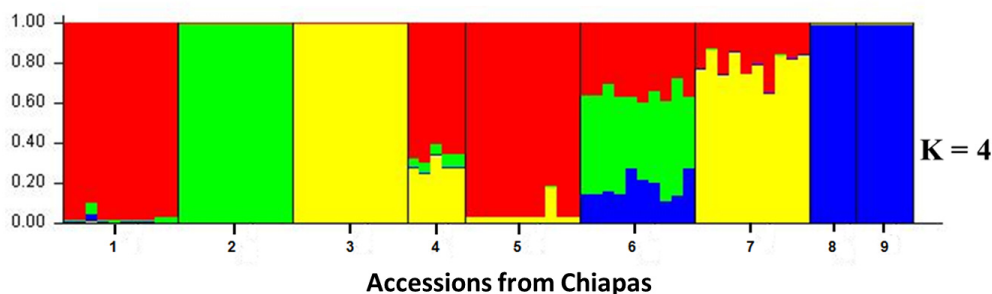
Table 3. Paired F_{ST} values of nine wild accessions of *Phaseolus lunatus* from Chiapas, Mexico, using 8 SSR loci.

	1	2	3	4	5	6	7	8	9
1	***								
2	0.82	***							
3	0.78	0.86	***						
4	0.43	0.68	0.69	***					
5	0.65	0.90	0.78	0.64	***				
6	0.42	0.59	0.65	0.43	0.65	***			
7	0.58	0.74	0.51	0.50	0.49	0.51	***		
8	0.86	0.90	0.84	0.77	0.91	0.76	0.69	***	
9	0.90	0.95	0.91	0.86	0.96	0.81	0.77	0.84	***

Note: 1, JMC1388; 2, JMC1394; 3, JMC1392; 4, JMC1391; 5, JMC1390; 6, JMC1393; 7, JMC1389; 8, G26739; 9, G25218. The order of accessions corresponds to Table 1 (accessions from Chiapas only).

as this presented ancestry from 3 different populations in very similar percentages, as shown by the three colors present in this accession. Figure 5 also suggests that the genetically “purest” accessions were JMC1394, JMC 1392, G26739 and G25218. The other accessions showed some level of ancestry from other accessions, as shown in JMC1391 having a relatively high percentage of ancestry from the JMC1392 and JMC1389, and JMC1389 having a percentage of ancestry relatively high from the JMC1388 and JMC1390 accessions.

Figure 5. Assignment test of individuals of nine wild accessions of *Phaseolus lunatus* from Chiapas, using optimal K value and the STRUCTURE program. The order of accessions corresponding to Tables 1 and 4. Number of accessions correspond to Figures 1, 2 and 3.

**Table 4.** Estimates of genetic diversity and inbreeding coefficients of nine wild accessions of *Phaseolus lunatus* from Chiapas, Mexico, using 8 SSR loci.

	N	%P	A	UA	$H_o \pm SD$	$H_e \pm SD$	G-W $\pm SD$	F_{is}
Chiapas	74	100	4.13	4.13	0.11 \pm 0.09	0.48 \pm 0.19	0.26 \pm 0.13	0.163
Accession								
JMC1388	10	62.5	1.32	0.00	0.48 \pm 0.33	0.38 \pm 0.21	0.31 \pm 0.24	-0.167
JMC1389	10	37.5	1.71	0.34	0.23 \pm 0.23	0.30 \pm 0.21	0.16 \pm 0.12	0.386
JMC1390	10	25.0	1.18	0.00	0.10 \pm 0.00	0.19 \pm 0.13	0.21 \pm 0.11	0.486
JMC1391	5	62.5	1.45	0.02	0.42 \pm 0.22	0.36 \pm 0.13	0.18 \pm 0.09	-0.167
JMC1392	10	12.5	1.29	0.36	0.00 \pm 0.00	0.44 \pm 0.00	0.29 \pm 0.00	1.000
JMC1393	10	37.5	1.55	0.30	0.37 \pm 0.55	0.32 \pm 0.21	0.26 \pm 0.04	0.053
JMC1394	10	62.5	1.12	0.01	0.28 \pm 0.22	0.44 \pm 0.11	0.31 \pm 0.21	0.382
G26739	4	37.5	1.38	0.38	0.08 \pm 0.14	0.37 \pm 0.10	0.45 \pm 0.37	0.333
G 25218	5	0	1.13	0.13	0.00 \pm 0.00	0.00 \pm 0.00	-----	-1.000

Note: %P, percentage of polymorphic loci at 95 %; A, allele richness; UA, unique alleles; H_o , observed heterozygosity; H_e , expected heterozygosity; G-W, Garza-Williamson index (lower values of this index suggest a higher probability of a recent genetic bottleneck in the accession); F_{is} , inbreeding coefficient [significant values are shown in Bold ($P \leq 0.05$); for G25218 accession, just one locus showed a F_{is} value of -1.0 and the other seven loci did not return any value]; SD, Standard Deviation.

Genetic diversity in wild populations from Chiapas. We found a total of 28 alleles in the nine studied accessions, with an average number of alleles of 3.1 per locus. Loci BM143 and BM211 showed the highest number of alleles (seven and six, respectively). The following estimators of genetic diversity were found to Chiapas: percentage of polymorphic loci = 100, mean number of alleles per locus and mean number of unique alleles per locus = 4.13, observed heterozygosity = 0.11, and expected heterozygosity = 0.48 (Table 4). Accessions showing the highest values of percentage of polymorphic loci were JMC1388, JMC1391, JMC1394, all with 62.5. The accession with the highest value of mean number of alleles per locus was JMC1389 with 1.71. The accession with the highest value of mean number of unique alleles per locus (0.38) was G26739. The accession that had the highest value of observed heterozygosity (0.48) was JMC1388. Accessions with the highest values of expected heterozygosity (0.44) were JMC1392 and JMC1394 (Table 4). Accession G25218 showed the lowest values for all estimators evaluated, except for the mean number of unique alleles per locus. The two accessions that showed the lowest values of Garza-Williamson index were JMC1389 and JMC1391, with 0.16 and 0.18, respectively, suggesting a high probability of a recent genetic bottleneck for these accessions (Table 4).

Discussion

For many years it was accepted that the genetic diversity of Lima bean was organized into two major groups: the Andean and Mesoamerican (Debouck *et al.* 1987, Gutiérrez-Salgado *et al.* 1995, Fofana *et al.* 1997, Maquet *et al.* 1997, Caicedo *et al.* 1999). However, these findings were supported by a very limited sampling, particularly of wild populations. In the last five years our group has collected more than 100 wild populations of *Phaseolus lunatus* in several regions of Mexico. This new material was integrated in recent molecular studies (Serrano-Serrano *et al.* 2012, Andueza-Noh *et al.* 2013, 2015, Martínez-Castillo *et al.* 2014), which demonstrated the existence of two sub-groups, MI and MII, within the Mesoamerican group, and that their divergence could have occurred in the region around the Isthmus of Tehuantepec, Mexico. However, the state of Chiapas, which is located in this region, was subrepresented in the aforementioned studies. This current work analyzed for the first time, individuals from seven wild populations of *P. lunatus* of Chiapas.

Genetic relationships between wild populations from Chiapas with the MI and MII groups. We found an optimal $K = 3$, implying the existence of only three genetically distinct populations among the 16 accessions analyzed. When STRUCTURE was run with $K = 3$, it was possible to see the existence of three groups: 1) the MII group, 2) a second group composed by seven accessions of Chiapas *in situ* collected and, 3) a third group consisting of MI and two accessions CIAT (Figure 2). This grouping was similar to that generated by the PCoA (4), which showed also the existence of the same groups detected by STRUCTURE, although with a large dispersion within each of these groups, in part due to fact that PCoA was conducted at the level of individuals (Figure 4). The results obtained by the Neighbor Joining analysis showed two main groups (Figure 3), with the wild accessions of MII included within the Chiapas group. This could be an expected result considering that MII accessions were collected at sites that are geographically closer to Chiapas accessions (Figure 1). However, the bootstrap values obtained were low and thus do not provide strong support to this grouping pattern. Since low bootstrap values can result from the use of small sample sizes (Nei *et al.* 1983, Takezaki & Nei 1996) this could have been the case in the present study, where we used accessions with low number of individuals (between 4 and 10 individuals per accession) and only 10 SSR loci. Low bootstraps values obtained may also be due to the existence of recent gene flow between populations, which may be reflected in the admixed populations found, specially from Chiapas (Figure 5). Another explanation could be that maybe not enough time has passed for these populations to diverge by genetic drift.

The three methods used here to detect genetic patterns (STRUCTURE, PCoA and N-J) showed that the two accessions obtained from CIAT always grouped with the MI group. This could indicate that Chiapas wild populations are genetically closer to this group. However, this conclusion must be taken with caution because both CIAT accessions contained only 5 individu-

als, and one of these accessions had no complete information regarding origin of the samples. However, if we consider the result of the N-J, then the wild populations of *Phaseolus lunatus* of Chiapas are genetically closer to the MII group, implying that the genetic divergence of MI and MII may have occurred in the northern part of the Isthmus of Tehuantepec. An alternative explanation may be that the genetic divergence of MI and MII groups is still in process around of the Isthmus of Tehuantepec, the region that includes the state of Chiapas. Existence of admixed populations in MI and MII groups reported by studies that have used different molecular evidence (Serrano-Serrano *et al.* 2012, Andueza-Noh *et al.* 2013, 2015, Martínez-Castillo *et al.* 2014) support this idea.

Genetic structure and inbreeding in wild Phaseolus lunatus from Chiapas. The observed genetic differentiation between wild accessions of *P. lunatus* from Chiapas was higher than that reported for the Yucatan Peninsula region using also SSR markers ($F_{ST} = 0.27$, Martínez-Castillo *et al.* 2006). It is important to highlight that, compared with the Yucatan Peninsula, the territory of Chiapas is much more heterogeneous, with mountains, valleys, different climates and soils that favors the existence of geographical barriers that limit gene flow. Although historical gene flow (Nm) was not directly assessed in this study, the natural dispersion of *P. lunatus* wild populations by dehiscence of the sheath limits the radius of maximum dispersal of seeds (six meters) favoring low Nm values (Baudoin *et al.* 2004). Several studies have reported low Nm values (less than 1) for wild populations of this species (Ouédraogo & Baudoin 2002, Martínez-Castillo *et al.* 2006).

The value of F_{IS} for the Chiapas state was positive (0.163, $P = 0.00625$), suggesting an excess of homozygosity than expected from random mating, that it is usually the result of inbreeding, either by self-pollination or crosses among relatives. In *Phaseolus lunatus*, selfing is favored by the synchronized maturation of pollen grains and stigma and by their proximity within the flower bud (Webster *et al.* 1979). The F_{IS} value found in Chiapas contrasts with the value reported by Martínez-Castillo *et al.* (2006) for the Yucatan Peninsula ($F_{IS} = -0.31$). These differences in F_{IS} between both regions of Mexico appear to correspond to the difference in the size the populations and the levels of endogamy, and it can be another factor to explain the greater differentiation in the *P. lunatus* wild populations from Chiapas.

Also, wild populations of *Phaseolus lunatus* have a metapopulation behavior (Barrantes *et al.* 2008), implying the existence of extinction and recolonization processes that may affect their genetic structure. It has been noted that the founder effect associated with recolonization increases the differentiation between subpopulations (Wright 1977). Although all these factors can lead to isolation by distance, our Mantel analysis was not significant and thus did not indicated the existence of such geographical isolation, which has previously been reported for the species (Martínez-Castillo *et al.* 2006, Serrano-Serrano *et al.* 2010). One possible explanation for this result is the existence of admixed accessions, namely accessions possessing ancestry derived from more than one accession as a result of recent gene flow. Although it is common to find reports of low levels of historical gene flow (Nm), new assignment tests of individuals based in Bayesian methods had reported admixed accessions in *P. lunatus* (Martínez-Castillo *et al.* 2014, Andueza-Noh *et al.* 2015). Examples of such accessions in the present study are JMC1391, JMC1393, JMC1389 (Figure 5).

Genetic diversity in wild Phaseolus lunatus from Chiapas. The genetic diversity observed in wild *P. lunatus* of Chiapas was high ($H_E = 0.48$), although lower than previously reported for the Yucatan Peninsula ($H_E = 0.69$, Martínez-Castillo *et al.* 2006) and all Mexico ($H_E = 0.61$, Martínez-Castillo *et al.* 2014). The genetic diversity found in Chiapas was higher than that reported for the Central Valley of Costa Rica. This valley has a large number of wild populations of *P. lunatus* and is the only region, apart from Mexico, where there are studies of wild populations of this species (for a summary of these studies, see Baudoin *et al.* 2004). Ouédraogo and Baudoin (2002) conducted a preliminary analysis of the genetic diversity of *P. lunatus* using four SSR loci and 10 wild populations from the Central Valley of Costa Rica. They reported a low H_O , 0.031. Ouédraogo *et al.* (2005), using 10 SSR loci and nine wild populations of the Central Valley of Costa Rica, reported %P = 48.89, A = 1.644, $H_O = 0.012$, and $H_E = 0.143$. All these values are lower than those found for Chiapas in the present work (Table 4). One possible explanation for these differences in genetic diversity between the two regions is that the Central Valley of

Costa Rica is subject to intensive commercial agriculture and the growth of urban areas, both factors affecting the wild populations of *P. lunatus* (Baudoin *et al.* 2004, Martínez-Castillo *et al.* 2006). The levels of genetic diversity found in Chiapas were slightly lower than averages reported for other plants that, as *P. lunatus*, are short-lived perennials ($SSR, H_E = 0.55$) or have mixed mating systems ($SSR, H_E = 60$) (Nyblom 2004).

The results of the bottleneck analysis showed no relation to the size of sample of accessions. Some accessions containing four or five individuals showed higher values of the G-W index than other accessions with 10 individuals and viceversa (Table 3). Interestingly, JMC1391 accession ($N = 5$) showed the second lowest value of this index, but had high values of %P, A and H_0 compared to accessions that had higher values of this index (Table 4).

Conclusions

The results of this study support the hypothesis that the genetic divergence of MI and MII groups of wild *Phaseolus lunatus* is an ongoing process centered around the Isthmus of Tehuantepec. Our results also strengthen the hypothesis that Mexico is an important center of genetic diversity for this species. Currently, our group continues collecting wild populations of *P. lunatus* throughout Mexico to complete this sampling in 2016-2017. Also, we are currently conducting massive sequencing of SNP (Single Nucleotide Polymorphism) markers in order to expand the genomic sampling and thus characterize in detail the phylogeographic structure of *P. lunatus* var. *silvester* in Mexico. With this broader sampling at the population and genomic level, we plan to define priority areas of conservation for wild populations of *P. lunatus* and to provide data to define the exact sites of domestication of this species.

Acknowledgment

This work was performed at the Laboratory of Molecular Markers of Unidad de Recursos Naturales of the Centro de Investigación Científica de Yucatán (CICY). Authors thank to Dra. Renee S. Arias and the anonymous reviewers for checking the English.

Literature cited

- Andueza-Noh RH, Martínez-Castillo J, Chacón Sánchez MI. 2015. Domestication of small-seeded lima bean (*Phaseolus lunatus* L.) landraces in Mesoamerica: evidence from microsatellite markers. *Genetica* **142**:657-669. DOI: 10.1007/s10709-015-9863-0.
- Andueza-Noh RH, Serrano-Serrano ML, Chacón Sánchez MI, Sánchez del Pino I, Camacho-Pérez L, Coello-Coello J, Mijangos Cortes JO, Debouck DG, Martínez-Castillo J. 2013. Multiple domestications of the Mesoamerican gene pool of Lima bean (*Phaseolus lunatus* L.): evidence from chloroplast DNA sequences. *Genetic Resources and Crop Evolution* **60**:1069-1086. DOI: 10.1007/s10722-012-9904-9.
- Barrantes D, Macaya G, Guarino L, Baudoin JP, Rocha OJ. 2008. The impact of local extinction on genetic structure of wild populations of Lima beans (*Phaseolus lunatus*) in the Central Valley of Costa Rica: consequences for the conservation of plant genetic resources. *Revista de Biología Tropical* **3**:1023-1041. DOI: 10.15517/rbt.v56i3.5690.
- Bassam BJ, Caetano-Anollés G, Gresshoff PM. 1991. Fast and sensitive silver staining of DNA in polyacrylamide gels. *Analytical Biochemistry* **196**:80-83. DOI: 10.1016/0003-2697(91)90120-I.
- Baudet JC. 1977. The taxonomic status of the cultivated types of Lima bean (*Phaseolus lunatus* L.). *Tropical Grain Legume Bulletin* **7**:29-30.
- Baudoin JP, Rocha J, Degreaf A, Maquet A, Guarino L. 2004. Ecogeography, Demography, Diversity and Conservation of *Phaseolus lunatus* L. in the Central Valley of Costa Rica. Rome: Systematic and Ecogeographic Studies on Crop 12, International Plant Genetic Resources Institute.
- Caicedo AL, Gaitán-Solis E, Duque MC, Toro Chica O, Debouck DG, Tohme J. 1999. AFLP fingerprinting of *Phaseolus lunatus* L. and related wild species from South America. *Crop Science* **39**:1497-1507. DOI: 10.2135/cropsci1999.3951497x.
- Debouck DG, Liñan-Jara JH, Campana-Sierra A, de la Cruz-Rojas JH. 1987. Observations on the domestication of *Phaseolus lunatus* L. *Plant Genetics Resources Newsletter* **70**: 26-32. DOI: 10.1007/s10722-008-9314-1.
- Doyle J, Doyle J. 1987. A rapid DNA isolation procedure for small quantities of fresh leaf tissue. *Phytochemical Bulletin* **19**:11-15. DOI: 10.1590/S0103-90162009000400015.

- Earl DA, vonHolt BM. 2012. STRUCTURE HARVESTER: a website and program for visualizing STRUCTURE output and implementing the Evanno method. *Conservation Genetics Resources* **4**:359–361. DOI: 10.1007/s12686-011-9548-7.
- Evanno G, Regnaut S, Goudet J. 2005. Detecting the number of clusters of individuals using the software STRUCTURE: a simulation study. *Molecular Ecology* **14**:2611–2620. DOI: 10.1111/j.1365-294X.2005.02553.x
- Excoffier L, Laval G, Schneider S. 2005. Arlequin ver. 3.0: An integrated software package for population genetics data analysis. *Evolutionary Bioinformatics Online* **1**:47–50.
- Fofana B, Vekemans X, du Jardin P, Baudoin JP. 1997. Genetic diversity in Lima bean (*Phaseolus lunatus* L.) as revealed by RAPD markers. *Euphytica* **95**:157–165. DOI: 10.1023/A:1002910114869.
- Garza JC, Williamson EG. 2001. Detection of reduction in population size using data from microsatellite loci. *Molecular Ecology* **10**:305–318. DOI: 10.1046/j.1365-294X.2001.01190.x.
- Goldstein D.B., Ruiz-Linares A., Cavalli Sforza L.L., Feldman M.W. 1995. An evaluation of genetic distances for use with microsatellite loci. *Genetics* **139**:463–471. PMID: PMC1206344.
- Goudet J. 1995. FSTAT (version 1.2): a computer program to calculate F-statistics. *Journal of Heredity* **86**:485–486.
- Gutiérrez-Salgado A, Gepts P, Debouck DG. 1995. Evidence for two gene pools of the Lima beans, *Phaseolus lunatus* L., in the Americas. *Genetic Resources and Crop Evolution* **42**:15–28. DOI: 10.1007/BF02310680.
- Hamrick JL. 1983. The distribution of genetic variation within and among natural plant populations. In: Schonewald-Cox CM, Chambers SM, MacBryde B, Thomas L, eds. *Genetics and Conservation*. London: Benjamin-Cummings, 335–348.
- Hedrick PW. 2001. Conservation genetics: where are we now? *Trends in Ecology and Evolution* **16**:629–636. DOI: 10.1016/S0169-5347(01)02282-0.
- Kalinowski ST. 2005. HP-Rare: a computer program for performing rarefaction on measures of allelic diversity. *Molecular Ecology Notes* **5**:187–189. DOI: 10.1111/j.1471-8286.2004.00845.x.
- Kaplan L, Lynch TF. 1999. *Phaseolus* (Fabaceae) in archaeology: AMS radiocarbon dates and their significance for pre-Colombian agriculture. *Economic Botany* **53**:261–272. DOI: 10.1007/BF02866636.
- Kwak M, Gepts P. 2009. Structure of genetic diversity in the two major gene pools of common bean (*Phaseolus vulgaris* L., Fabaceae). *Theoretical and Applied Genetics* **118**:979–992. DOI: 10.1007/s00122-008-0955-4.
- Langella O. 1999. Populations 1.2.28: A Population Genetic Software. CNRS UPR9034. URL <http://www.pge.cnrs-gif.fr/bioinfo/populations>.
- Lavor P, van den Berg C, Jacobi CM, Carmo FF, Versieux LM. 2014. Population genetics of the endemic and endangered *Vriesea minarum* (Bromeliaceae) in the Iron Quadrangle, Espinhaço Range, Brazil. *American Journal of Botany* **7**:1167–1175. DOI: 10.3732/ajb.1300388.
- Luo MC, Yang ZL, You FM, Kawahara T, Waines GJ, Dvorak D. 2007. The structure of wild and domesticated emmer wheat populations, gene flow and the site of the emmer domestication. *Theoretical and Applied Genetics* **114**: 947–959. DOI: 10.1007/s00122-006-0474-0.
- Maquet A, Zoro Bi I, Delvaux M, Wathelet B, Baudoin JP. 1997. Genetic structure of a Lima bean base collection using allozyme markers. *Theoretical and Applied Genetics* **95**:980–991. DOI: 10.1007/s001220050651.
- Mantel N. 1967. The detection of disease clustering and a generalized regression approach. *Cancer Research* **27**:209–220. PMID: 6018555
- Martínez-Castillo J, Zizumbo-Villarreal D, Perales-Rivera H, Colunga-GarcíaMarín P. 2004. Intraspecific diversity and morpho-phenological variation in *Phaseolus lunatus* L. from the Yucatan Peninsula, México. *Economic Botany* **3**:354–380. DOI: 10.1663/0013-0001(2004)058[0354:IDAMVI]2.0.CO;2.
- Martínez-Castillo J, Zizumbo-Villarreal D, Gepts P, Delgado-Valerio P, Colunga-GarcíaMarín P. 2006. Structure and genetic diversity of wild populations of Lima bean (*Phaseolus lunatus* L.) from the Yucatan Peninsula, Mexico. *Crop Science* **46**:1071–1080. DOI:10.2135/cropsci2005.05-0081.
- Martínez-Castillo J, Colunga-GarcíaMarín P, Zizumbo-Villarreal D. 2008. Genetic erosion and in situ conservation of Lima bean (*Phaseolus lunatus* L.) landraces in its Mesoamerican diversity center. *Genetic Resources and Crop Evolution* **55**:1065–1077. DOI: 10.1007/s10722-008-9314-1.
- Martínez-Castillo J, Camacho-Pérez L, Villanueva-Viramontes S, Andueza-Noh RH, Chacón Sánchez I. 2014. Genetic structure within the Mesoamerican gene pool of wild *Phaseolus lunatus* L. (Fabaceae) from Mexico as revealed by microsatellite markers: Implications for conservation and domestication of the species. *American Journal of Botany* **101**:851–864. DOI: doi:10.3732/ajb.1300412.
- Mattioni C, Martin MA, Pollegioni P, Cherubini M, Villani F. 2013. Microsatellite markers reveal a strong geographical structure in European populations of *Castanea sativa* (Fagaceae): Evidence for multiple glacial refugia. *American Journal of Botany* **100**:951–961. DOI: 10.3732/ajb.1200194.
- Meyer RS, DuVal AE, Jensen HR. 2012. Patterns and processes in crop domestication: an historical review

Received:
December 15th, 2015

Accepted:
January 28th, 2016

- and quantitative analysis of 203 global food crops. *New Phytologist* **196**:29–48. DOI: 10.1111/j.1469-8137.2012.04253.x.
- Nei M, Tajima F, Tateno Y. 1983. Accuracy of estimated phylogenetic trees from molecular data. *Journal of Molecular Evolution* **19**:153–170. DOI: 10.1007/BF01840887.
- Noormohammadi Z, Trujillo I, Belaj A, Ataei S, Hosseini-Mazinan M. 2014. Genetic structure of Iranian olive cultivars and their relationship with Mediterranean's cultivars revealed by SSR markers. *Scientia Horticulturae* **178**:175–183. DOI: 10.1016/j.scienta.2014.08.002.
- Nybom H. 2004. Comparison of different nuclear DNA markers for estimating intraspecific genetic diversity in plants. *Molecular Ecology* **13**:1143–1155. DOI: 10.1111/j.1365-294X.2004.02141.x.
- Ouédraogo M, Baudoin JP. 2002. Comparative analysis of genetic structure and diversity in wild Lima bean populations from the Central Valley of Costa Rica, using microsatellite and isozyme markers. *Annual Report of the Bean Improvement Cooperative* **45**:240–241.
- Ouédraogo M, Maquet A, Baudoin JP. 2005. Étude comparative de la diversité et de la structure génétique de populations sauvages de *Phaseolus lunatus* L. à l'aide des marqueurs enzymatiques et microsatellites. *Biotechnologie, Agronomie, Société et Environnement* **3**:195–205.
- Peakall R, Smouse PE. 2012. GenAlEx 6.5: genetic analysis in Excel. Population genetic software for teaching and research—an update. *Bioinformatics* **28**:2537–2539. DOI: 10.1111/j.1471-8286.2005.01155.
- Pritchard JK, Stephens M, Donnelly P. 2000. Inference of population structure using multilocus genotype data. *Genetics* **155**: 945–959. PMID: 10835412.
- Ramanatha Rao RV, Hodgkin T. 2002. Genetic diversity and conservation and utilization of plant genetic resources. *Plant Cell, Tissue and Organ Culture* **68**:1–19. DOI: 10.1023/A:1013359015812.
- Serrano-Serrano ML, Hernández-Torres J, Castillo-Villamizar G, Debouck DG, Chacón Sánchez MI. 2010. Gene pools in wild lima bean (*Phaseolus lunatus* L.) from the Americas: evidences for an Andean origin and past migrations. *Molecular Phylogenetics and Evolution* **54**:76–87. DOI: 10.1016/j.ympev.2009.08.028.
- Serrano-Serrano ML, Andueza-Noh RH, Martínez-Castillo J, Debouck DG, Chacón Sánchez MI. 2012. Evolution and domestication of Lima bean (*Phaseolus lunatus* L.) in Mexico: Evidence from ribosomal DNA. *Crop Science* **52**:1698–1712. DOI: 10.2135/cropsci2011.12.0642.
- Shivaprakash KN, Ramesha T, Shaanker RU, Dayanandan S, Ravikanth G. 2014. Genetic Structure, Diversity and Long Term Viability of a Medicinal Plant, *Nothapodytes nimmoniana* Graham. (Icacina-ceae), in Protected and Non-Protected Areas in the Western Ghats Biodiversity Hotspot. *PLoS ONE* **9**: e112769. DOI: 10.1371/journal.pone.0112769.
- Sokal RR. 1979. Testing statistical significance of geographic variation patterns. *Systematic Zoology* **28**:227–232. DOI: 10.2307/2412528.
- Takezaki N, Nei M. 1996. Genetic distances and reconstruction of phylogenetic trees from microsatellite DNA. *Genetics* **144**:389–399. PMID: 8878702
- Tamura K, Peterson D, Peterson N, Stecher G, Nei M, Kumar S. 2011. MEGA5: molecular evolutionary genetics analysis using maximum likelihood, evolutionary distance, and maximum parsimony methods. *Molecular Biology and Evolution* **28**: 2731–2739. DOI: 10.1093/molbev/msr121.
- Tautz D, Renz M. 1984. Simple sequences are ubiquitous repetitive components of eukaryotic genomes. *Nucleic Acids Research* **12**:4127–4138. PMID: 6328411.
- Webster BD, Lynch SP, Tucker CL. 1979. A morphological study of the development of reproductive structures of *Phaseolus lunatus* L. *Journal of the American Society for Horticultural Science* **104**:240–243.
- Wright S. 1977. *Evolution and the Genetics of Populations Volume 3: Experimental results and evolutionary deductions*. Chicago: The University of Chicago Press.