

An analysis of vegetation and species diversity patterns in sand dune and gravel desert ecosystem

MAHSA ABDI AND SAEED AFSHARZADEH*

Botanical Sciences
94 (3): 499-511, 2016

DOI: 10.17129/botsai.584

Abstract

This study provides an analysis of vegetation and environmental relationships as well as diversity patterns in sand dunes and gravel desert plains of northern Badrud, Iran. A total of 63 species representing 49 genera and 15 families were recorded. The largest families were Asteraceae (22.2 %) and Chenopodiaceae (19.0 %). Therophytes (66.67 %) were the dominant life form. Chronological analysis showed 57.14 % Irano-Turani elements. Data from 60 1.5×2 m² quadrats, selected systematically randomized along three transects, were collected. Both two-way indicator species analysis (TWINSpan) and cluster analysis using Ward's method resulted in the recognition of three communities: an *Artemisia sieberi* community in the center plain with a Shannon-Wiener diversity index of 0.3, a *Stipagrostis plumosa* - *Schismus arabicus* community on the lower sand dunes with a Shannon-Wiener diversity index of 0.7, and a *Haloxylon ammodendron* community on the higher sand dunes with a Shannon-Wiener diversity index of 0.2. Detrended correspondence analysis (DCA), non-metric multidimensional scaling (NMDS), and multi-response permutation procedure (MRPP), confirmed the separation of TWINSpan groups as well as the heterogeneity of the *Artemisia sieberi* - *Schismus arabicus* community, suggesting a distinct group with *Artemisia sieberi* and *Schismus arabicus* as the dominant species. Vegetation environmental analysis by means of multivariate techniques of principal component analysis (PCA) and canonical correspondence analysis (CCA) indicated that very coarse gravel has a strong negative effect on diversity and a negative effect on species cover percentage. Bare ground showed a highly positive effect on diversity variables. Soil analysis suggests final seral stages of succession towards severe desertification.

Keywords: desert vegetation, floristic inventory, ordination, cluster analysis, TWINSpan

Un análisis de la vegetación y de los patrones de vegetación en los ecosistemas de dunas de arena y desierto de grava

Resumen

Este estudio proporciona un análisis de las relaciones de la vegetación y el medio ambiente, así como los patrones de diversidad en las dunas de arena y llanuras de grava del desierto del norte Badrud, Irán. Se registró un total de 63 especies que representan 49 géneros y 15 familias. Las familias más importantes fueron Asteraceae (22,2 %) y Chenopodiaceae (19,0 %). Las terófitas (66,67 %) fueron la forma de vida dominante. Los análisis cronológico mostraron un 57,14 % de elementos irano-Turani. Se recogieron datos de 60 cuadrantes de $1,5 \times 2$ m² seleccionados al azar de forma sistemática a lo largo de 3 transectos. Tanto el análisis de especies indicadoras de dos vías (TWINSpan) y análisis de conglomerados, utilizando el método de Ward arrojaron como resultado el reconocimiento de tres comunidades: la comunidad de *Artemisia sieberi* en el centro de la parte llana de la región con Shannon-Wiener con índice de diversidad de 0,3, la comunidad *Stipagrostis plumosa* - *Schismus arabicus* en las dunas de arena más bajas con Shannon-Wiener con índice de diversidad de 0,7 y la comunidad de *Haloxylon ammodendron* en las dunas de arena más altas con Shannon -Wiener con índice de diversidad de 0,2. El análisis de correspondencia sin tendencia (DCA), el de escalamiento multidimensional no métrico (CMBD) y el procedimiento de permutación multi-respuesta (MRPP) confirmaron la separación de grupos TWINSpan así como de la heterogeneidad de la comunidad de *Artemisia sieberi*-*Schismus arabicus* sugiriendo un grupo distinto de la comunidad que tienen a *Artemisia sieberi* y *Schismus arabicus* como especie dominante. El análisis de vegetación ambiental mediante técnicas multivariantes de análisis de componentes principales (PCA) y el análisis de correspondencia canónica (CCA) indicó que grava muy gruesa tiene un fuerte efecto negativo en la diversidad y el efecto negativo sobre el porcentaje de cobertura de las especies. El suelo desnudo mostró un efecto altamente positivo en las variables de diversidad. El análisis del suelo implica etapas seriales finales de sucesión a la desertificación severa.

Palabras clave: desierto de vegetación, inventario florístico, ordenación, análisis de conglomerados, TWINSpan

Department of Biology, Faculty of Science, University of Isfahan, Isfahan, Iran

* Corresponding author:
s.afshar@biol.ui.ac.ir

Approximately 85 % of Iran's territory is composed of arid, semiarid or hyper arid environment (Heshmati 2007). In such a country, desert vegetation is an abundant type among the plant life spectra, representing many xerophytic plant species and communities. As species composition and diversity are fundamental characteristics of ecosystems (Chapin *et al.* 1992, Hooper & Vitousek 1997, Burk 2001), variations in diversity are presumably correlated with the stability of various biotic and abiotic components of ecosystems (Leigh Jr. 1965). Among different factors, availability of water is the primary one controlling the distribution of species (Noy-Meir 1973, Li *et al.* 2004). Water availability in such desert regions with rare occasional rainfall, is dependent to a high degree on water holding capacity, which in turn is highly related to some soil physical characteristics of texture coarseness. The importance of environmental characters on vegetation patterns has been emphasized by Jafari *et al.* (2004), El-Ghani & Amer (2003) and He *et al.* (2007).

Having an annual mean precipitation of 109.2 mm, with values less than 100 mm in some years, and a maximum temperature exceeding 48 °C in summer months, the northern Badrud region, located in the central Iranian Plateau–Dasht-e-Kavir, represents a very hot dry environment. This ecosystem is typical of a desert with two major land forms, including a sand and gravel plain, which is partly covered with sand dunes. The region is floristically distinctive for possessing special psammophytic and halophytic vegetation types, many of which are endangered here in their habitats. This region is exposed to serious threats of vegetation degradation due to excessive drought, wind erosion, and overgrazing leading to successional progress of desertification.

Recognition of plant communities as well as investigating diversity and the effects of some abiotic factors such as gravel cover vs. ground bareness on species and diversity variables, by means of accurate multivariate techniques of analysis, are essential to stop further degradation of the natural vegetation of this area. The main objectives of this research are to: 1) investigate species composition, plant communities, and plant diversity of this region, 2) compare and contrast two vegetation classification techniques, Ward's method and TWINSpan, and test the results with ordination procedures; and 3) use multivariate analyses to examine the effect of some environmental factors on distribution, abundance, and patterns of communities.

The findings of this research related to species diversity potentials for such regions can improve conservation planning management and vegetation restoration. Since this is the first comprehensive study on vegetation analysis and flora for the region, the results can also be a monitoring point for future studies of species diversity and succession.

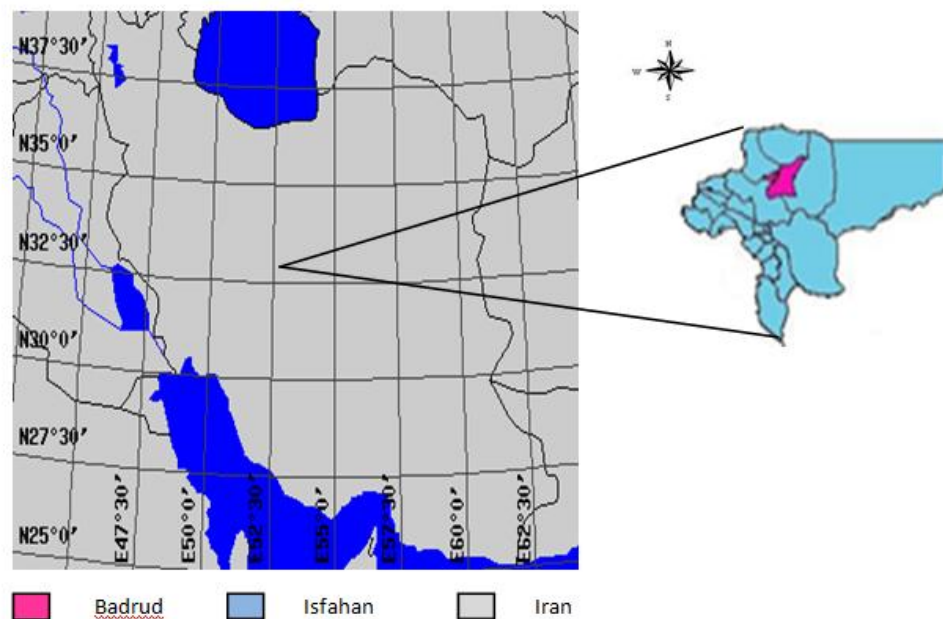
Materials and methods

Study area. The Badrud north region is located 65 km north of the Isfahan province in central Iran (Figure 1). It lies between 33° 44' N, 51° 51' E and 33° 48' N, 51° 56' E latitude and longitude. The study area covers 1,194 hectares, with the elevation ranging from 946 m in the plains to 1,021 m in the sand dunes. It is geologically composed of terraces, aeolian sand sheets, alluvial fans, and low to high aeolian sand hills belonging to Miocene, Pleistocene, Holocene, and recent ages. It has a desert climate representing very hot dry conditions. The annual mean precipitation is 109.2 mm and the annual mean temperature is 20.56 °C, with extreme minimum and maximum temperatures of -18 °C (in January) and 48.5 °C (in July), respectively.

Vegetation sampling procedures. Data collection was carried out during five field trips between September 2008 and April 2010. A preliminary survey of vegetation types and the natural characteristics of the landforms guided the selection of three transect lines in different parts of the region, one in the plain and the other two in sand dunes. A total of sixty 1.5 × 2 m² quadrats, 20 in each transect, were established using randomized systematic sampling. The size of sampling quadrats was determined using the minimal area method.

The presence of each species and its canopy cover in each quadrat were recorded using the visual estimation method and the ordinal scale of Domin (Kent & Coker 1992). Other variables for the percentage of gravel and ground bareness were also measured according to the quadrat area using the visual estimation method. Quadrat location, longitude, latitude, and altitude were also recorded by the use of a GPS receiver.

Figure 1. Location of the area in the center of Iran



For each of the quadrats the Shannon-Wiener index of species diversity $H' = -\sum_{i=1}^s p_i \log p_i$ (Magurran 1988) was calculated on the basis of the relative cover p_i of the i th species. Shannon-Wiener is a widely used index for comparing diversity between various habitats. It counts all species according to their frequencies, and has the advantage of favoring neither rare nor common species disproportionately (Clarke & Warwick 2001). Effective number of species, (\exp Shannon) was calculated in order to compare the Shannon diversity index of communities (Hill 1973).

Soil sampling and analysis. A random subsample of thirty soil samples were collected. Soils were taken from a 0-20 cm depth and sieved through a 2 mm screen. Samples were analyzed for soil moisture, electrical conductivity (EC), salinity, and acidity reaction (pH). A 100 g subset of each sample was oven-dried at 110 °C for 24 h, and then weighed to determine its dry weight. Soil moisture was determined as a percentage of oven dried matter. A soil water extract (soil: water ratio = 1:5) was prepared. Electrical conductivity (EC), salinity, and pH of soil extracts were determined using a portable electrical conductivity meter and a glass electrode pH-meter (Consort 535). All of the procedures were performed according to McLean's method (McLean 1982).

Data analysis method. The computer program PC-ORD 4.17 (McCune & Mefford 1999) was used for all classifications and ordinations. Two-way indicator species analysis (TWINSpan) (Hill *et al.* 1975) and the cluster analysis using Ward's minimum variance method (Ward Jr. 1963, Gauch Jr. 1982) were performed in order to classify the vegetation into groups based upon a relative cover percentage data matrix of 24 plant species in 52 quadrats (eight quadrats were eliminated from the data set due to the complete lack of vegetation cover). In TWINSpan, pseudospecies cut levels were altered to 0, 2, 5, 10, 40, and 80, and the minimum group size for divisions to 6. Other program settings were retained as the defaults. A dendrogram was made based on the constructed two-way order table. Cluster analysis was performed using Ward's method with Euclidean distance measure and the TWINSpan groups superimposed. The results were compared with each other.

Robustness of classification was examined through ordination techniques including detrended correspondence analysis (DCA), non-metric multidimensional scaling (NMDS), and a grouping test procedure called multi response permutation procedure (MRPP). In DCA (Hill & Gauch Jr. 1980), rare species were down weighted and the defaults for rescaling axis were retained. The gradient length in standard deviation units and the magnitude of change in species composition were investigated. The NMDS method (Anderson 1971, Kent & Coker 1992), which operates on ranking dissimilarities between samples (Minchin 1987, Shupe 2005), was run choosing autopilot mode with slow and thorough speed and Sorenson similarity coefficient to search for

the solution of best fit. The ordination was rerun with the recommended dimensionality. Among-group differences as well as the homogeneity of TWINSpan classes were also examined by another non-metric test (MRPP) using the Sorenson similarity coefficient (PC-ORD, McCune & Mefford 1999, Van Sickle 1997).

Principal component analysis (PCA) (Orloci 1966, Kent & Coker 1992) and the canonical correspondence analysis (CCA) (ter Braak 1986, 1987) were used to determine the effects of diversity, species, and environmental variables (very coarse gravel %, percent very coarse gravel, bare ground % percent bare ground, altitude, species diversity, species richness, evenness, dominance, and species cover % percent species cover) on the separation of vegetation types as well as to find the relationships among the above mentioned variables. For PCA, a correlation matrix was used and non-trivial components were selected by comparing each principal component eigenvalue to a broken-stick eigenvalue (Jackson 1993). Useful or non-trivial components are those components with eigenvalues that exceed the eigenvalue of their broken-stick counterpart (Legendre & Legendre 1998). All the default settings were selected for CCA, and a Monte Carlo test (1,000 permutations) was done to test the canonical axes eigenvalues and the significance of the species-environment correlations. Pearson's inter-set correlations from the CCAs were used to assess the significance of the tested variables. The correlations between variables and their effects on distribution of samples were also examined by using the CCA biplot procedure, which is carried out by superimposing radiating lines on the ordination space with their length proportional to the rate of variation (McCune & Mefford, 1999).

Results

Floristic summary. In total, 63 species representing 49 genera and 15 families were identified and recorded in the study area (see the Appendix 1 for details). Only 24 species occurred in vegetation samples. The recorded species mostly belonged to the Asteraceae (22.2 %), Chenopodiaceae (19.0 %), Poaceae (15.9 %), Brassicaceae (14.3 %), and Boraginaceae (9.5 %) families. Nine families were represented by a single species: Apiaceae, Caryophyllaceae, Cyperaceae, Dipsacaceae, Geraniaceae, Papaveraceae, Polygonaceae, Tamaricaceae, and Zygophyllaceae. Chronological analysis identified 57.14 % uniregional Irano-Turanian floristic elements. Therophytes (60.67 %) were the dominant life form, followed by hemicryptophytes (15.87 %), chamaephytes (9.52 %), and phanerophytes (7.94 %).

Soil analysis results. Quadrat values for soil moisture, EC, salinity, and pH were very similar among TWINSpan groups. Interpreting the results as a mean value for each TWINSpan group showed that the soil samples acidity reaction was strongly alkaline and nearly identical among samples. The results also indicated very low levels of soil moisture in all samples, confirming excessive soil aridity throughout the region. Soil electrical conductivity and soil salinity were nearly similar in soil samples of groups B and C, but showed remarkable variation in soils of group A (Table 1).

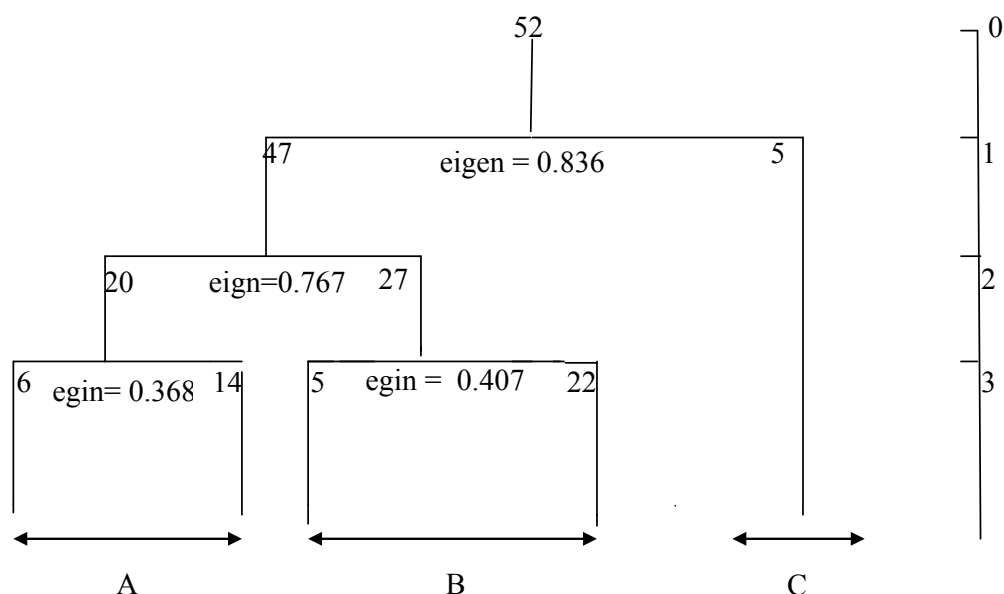
Multivariate analysis. Classification.-The TWINSpan classification results of the 52 vegetation samples are represented in figure 2. According to the dendrogram and the eigenvalues of each division, the vegetation is divided into 3 major groups at level 2 of the TWINSpan divisions. The groups were named after their dominant species.

Group A: *Artemisia sieberi* community. Twenty samples belonging to this community were found in the center plain, which is covered largely with very coarse gravel. The vegetation cover in this community is mainly composed of *Artemisia sieberi*, and the ground surface lacks almost any other vegetation cover. The soil of this community is more saline than for the other two.

Table 1. Average values of the physico-chemical properties in top soil layer (0-15 cm) in 3 TWINSpan communities

Vegetation group	EC(μs)	HUM%	pH	SAL(mg-lit.)
A (<i>Artemisia sieberi</i>)	1039.5	1.7	8.5	557.8
B (<i>Stipagrostis plumosa</i> - <i>Schismus arabicus</i>)	202.3	1.03	8.3	98.5
C (<i>Haloxylon ammodendron</i>)	201.3	1.03	8.5	100.4

Figure 2. Dendrogram of TWINSpan for vegetation in the study area showing divisions up to level 3



Companion species are *Erodium cicutarium* (L.) L'Hér., *Halocharis* sp., *Schumannia karelinii*, *Scabiosa olieri*, *Erysimum repandum* L., *Schismus arabicus* Nees, and *Astragalus tribuloides* Delile. The average number of species per sample is 2.2, the Shannon-Wiener diversity index is 0.3, and the effective number of species, $\exp(0.3)$, is 1.35.

Group B: *Stipagrostis plumosa* - *Schismus arabicus* community. Twenty-seven samples belonging to this community were observed in the northern and eastern part of the region on the lower sand dunes. The soil in this community mainly lacked very coarse gravel particles and the soil reaction was alkaline. The community was sparsely covered with *S. plumosa*, *S. arabicus*, and very sparse and open woody *Haloxylon ammodendron* (C.A.Mey) Bunge ex Fenzl, not present in the samples. The companion species were *Cornulaca aucheri* Moq., *Bromus tectorum* L., *Erodium cicutarium*, *Stipagrostis pennata* (Trin.) De Winter, *Boissiera squarrosa* (Sol.) Nevski, *Eremopyrum bonaepartis* (Spreng.) Nevski, *Londesia eriantha* Fisch. & C.A. Mey, *Heliotropium transoxanum* Bunge, *Salsola tomentosa* (Moq.) Spach., and *Cutandia memphitica* (Spreng.) Benth. The average number of species per sample is 3.7, the Shannon-Wiener diversity index is 0.7, and the effective number of species, $\exp(0.7)$, is 2.01.

Group C: *Haloxylon ammodendron* community. The five samples representing this community were observed in the southern part of the region on higher sand dunes. It is an almost completely open woodland of *H. ammodendron*. Its only companion species is *Schismus arabicus*, with very little cover area. Very coarse gravel particles are rare., and soil reaction is similarly

Figure 3. Cluster dendrogram using Ward's linking method and Euclidian distance measure with TWINSpan groups superimposed

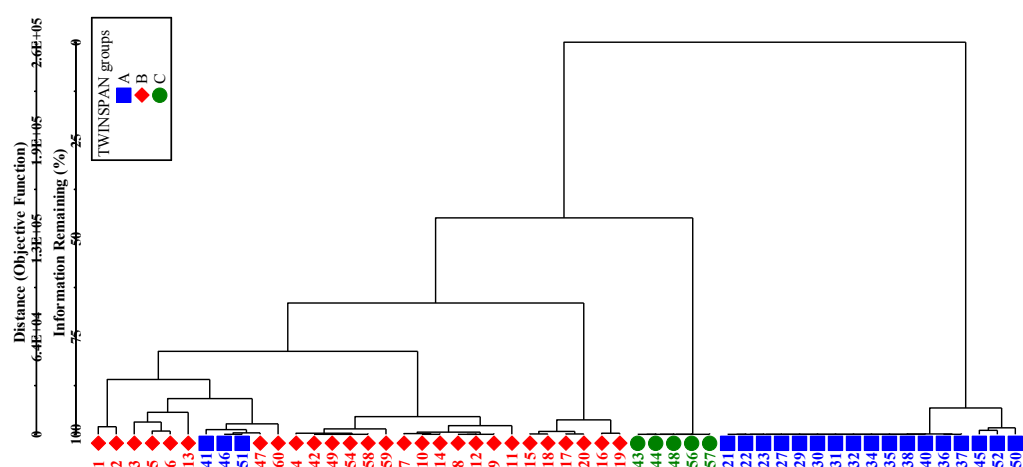
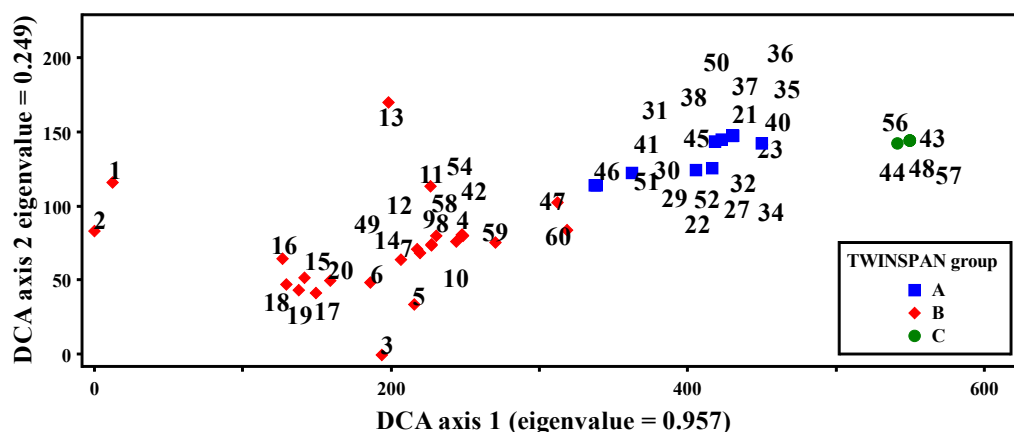


Figure 4. DCA diagram showing the ordination of 52 samples in the Badrud north region



alkaline. The average number of species per sample is 1.2, the Shannon–Wiener diversity index is 0.2, and the effective number of species, $\exp(0.2)$, is 1.22.

Three relative cover clusters were recovered at a similarity level of 60 % (Figure 3). The clusters, referred to here as a, b, and c, were nearly identical with TWINSpan groups A, B, and C, respectively. The only difference at this level of similarity was that three TWINSpan group A samples (41, 46, and 51) were classified in cluster b (Figure 3).

The MRPP procedure for testing whether there is no difference among TWINSpan groups vs. there is significant variation among them, revealed that the average distance of each group was less than the overall mean distance, except for that of group B (Observed delta = 0.28, Expected delta = 0.47, MRPP test statistic: $T = -27.29$, $P = 0.0000$).

Figure 5. NMDS dimensions 1 and 2 of 3-dimensional ordination for 52 vegetation samples in the Badrud north region

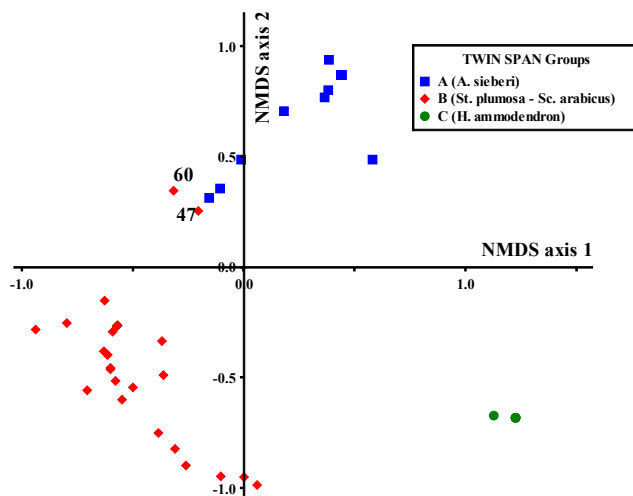
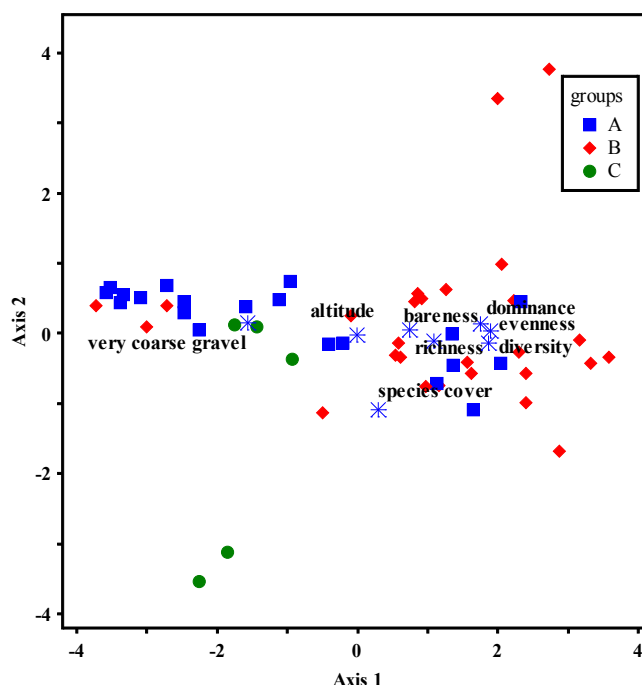


Table 2. Species and environmental correlation with the first 3 components in application of PCA

Factors	I*	II	III
Richness	0.3878**	-0.1327	0.1261
Evenness	0.4247**	0.1336	0.1759
Diversity	0.4196**	-0.1081	0.3660
Relative dominance	0.4220**	0.0385	0.2360
Altitude	-0.1263	0.6135	0.5363
Very coarse gravel	-0.3860**	0.1449	0.4467
Species cover	0.0516	-0.7369	-0.4332
Bare ground	0.3840**	0.1049	0.2977
	*** $p \leq 0.0001$	** $p \leq 0.01$	* $p \leq 0.05$

Figure 6. PCA ordination diagram of 52 vegetation samples and 8 species-environmental variables



Multivariate analysis. Ordination.— In order to compare the classification and ordination results, the TWINSpan groups were superimposed on to the DCA diagram (Figure 4) and separated along the first axis (eigenvalue = 0.957). The length of the gradient along the first axis was 5.5 SD units and thus indicated a complete turnover in species composition. The diagram also shows that the three group A samples (41, 51, and 46) along with two group B samples (47 and 60) are in a transitional state between the two groups. The second axis (eigenvalue = 0.249), with a gradient length of 1.75, was not important.

The NMDS ordination diagram with 3-dimensional solutions and a stress value of 9.025 confirmed the separation of TWINSpan groups along the axes of ordination (Figure 5). NMDS axis 1 separated the samples of group C from the samples of groups A and B. The samples of groups A and B were also separated along the NMDS axis 2. The diagram also shows that the group B samples are widely distributed along axis 2 and 3 of the NMDS ordination.

Figure 7. CCA biplot diagram showing the diversity and environmental variables as radiating lines and the TWINSpan groups superimposed

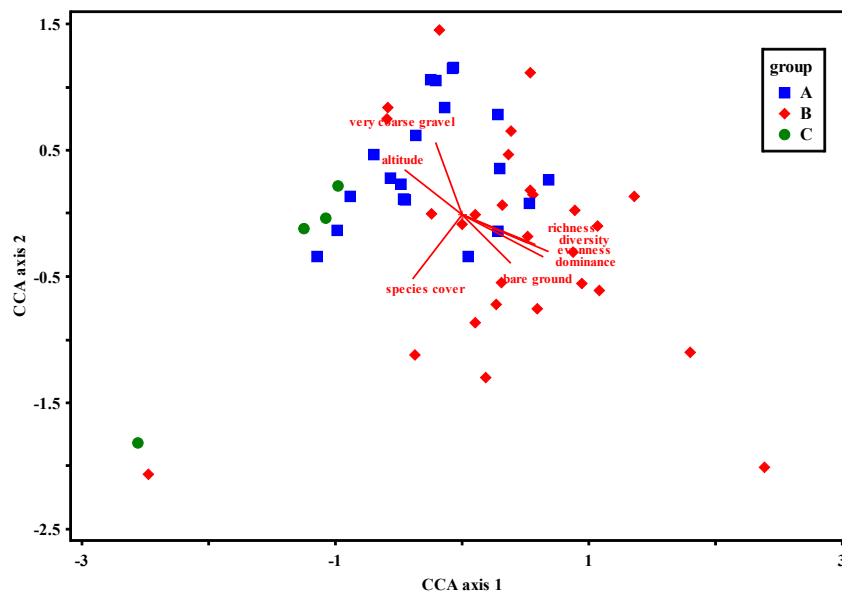


Table 3. The correlation of diversity and species variables with environmental variables. Significant variables are in bold

Environmental variables	Vegetation variables				
	Species cover	richness	evenness	diversity	Relative dominance
Very coarse gravel %	-0.329*	-0.623***	-0.620***	-0.591***	0.590***
Bare ground %	-0.029	-0.603***	0.646***	0.597	0.584***
altitude	0.150	0.111	-0.310*	0.004	0.232
	* $p \leq 0.05$		** $p \leq 0.01$		*** $p \leq 0.0001$

Multivariate analysis. Vegetation–Environmental relationships.-The results of the PCA ordination for determining the effects of the measured variables on the separation of vegetation communities are presented in table 2 and figure 6. Comparing each axis eigenvalue with its broken-stick counterpart confirmed the first axis to be the only useful non-trivial component (4.633 vs. 2.718, respectively); it accounted for 57.91 % of the total variance. The correlation between variables and the first principal component confirms that this axis is negatively correlated with very coarse gravel %, and is positively correlated with ground bareness, species richness, evenness, diversity, and relative concentration of dominance. The ordination samples belonging to the *Artemisia sieberi* community (mostly in the negative part of the axis) are correlated with a high percentage of coarse gravel, and the *Stipagrostis plumosa* - *Schismus arabicus* community, mainly in the positive part of the axis, is correlated with ground bareness.

For CCA (Figure 7), the first canonical axis eigenvalue was 0.552, and the Monte Carlo test for evaluating it was highly significant ($P = 0.007$). The first axis correlation with species-environmental variables was 0.83 and the Monte Carlo test was significant (0.04). The second axis eigenvalue was 0.371 and the Monte Carlo test was highly significant ($P = 0.002$). Species-environmental correlation with the second axis was 0.68 and the Monte Carlo significance level was 0.07. The relations between environmental factors and the CCA axis indicate that the first canonical axis is strongly and positively correlated with ground bareness, richness, evenness, diversity, and relative concentration of dominance, while negatively correlated with altitude. The second axis has strong negative correlation with bare ground, and species cover, and is positively correlated with very coarse gravel % ($r = 0.726$).

The correlation between environmental variables and diversity variables (table 3) shows that very coarse gravel cover has a strong negative effect on diversity ($r = 0.591$ and $r = 0.590$) and the number of species (species richness). The results also confirm that very coarse gravel has a negative effect on plant cover rate. Bare ground has strong positive effects on diversity variables.

Discussion

The floristic analysis of the study area recorded many drought resistant, xerophytic, halophytic, xerohalophytic and xeropsammophytic species, such as *Artemisia sieberi*, *Salsola nitraria*, *Anabasis setifera* Moq., and *Cornulaca aucheri*, reflective of an arid, salty, and sandy ecosystem. The life form spectra of the study area indicated the dominance of a typical desert life form. The dominance of annuals due to unfavorable conditions of little rainfall and excessive drought is in accordance with many findings in other deserts in Iran and other parts of the world (Asri 2003, Zarei *et al.* 2008, El-Ghanim *et al.* 2010, El-Ghani & Amer 2003, El-Sheikh *et al.* 2010). Communities with a single dominant species such as *A. sieberi* or *Haloxylon ammodendron*, which were recognized by multivariate techniques, are also reported in other deserts of Iran such as the Poshtkouh rangelands of the Yazd province (Jafari *et al.* 2004), which is dominated by *A. sieberi*. Wadi El-Sheikh of south Sinai and the gorges of Gebel Uweinat (Egypt) are also reported to have monotypic communities dominated by *Artemisia judaica* and *Cornulaca monacantha*, respectively (El-Ghareeb & Shabana 1990, Boulos 1982).

The other monotypic plant community of the region, *Haloxylon ammodendron*, is a component of the halophytic shrubby semi-woody communities on salty and dry soils, which is a

characteristic of large parts of Iranian halophytic communities in the Irano-Turanian region and often occurs with *Salsola tomentosa* (Akhani 2004). As *Salsola tomentosa* was observed and recorded in the study area, its absence in such a community may be due to its very low relative cover percentage or because of the sampling method.

TWINSPAN eigenvalues for each division were greater than 0.7, confirming the strength of classification in level 2. Comparing the two classification methods showed the results to be slightly different; three TWINSPAN group A samples (41, 46, and 51) were classified in the Ward's cluster b. Evaluating the results with the DCA and NMDS ordination techniques showed the three top samples to be more related to group A than B, suggesting that TWINSPAN groups in first levels are more interpretable than Ward's method in final clusters. Considering the nearly identical and high relative cover percentage of the dominant species in these samples as well as two group B samples (60 and 47), which are classified in one cluster, indicates that primary clusters in Ward's method were more interpretable than TWINSPAN final groups.

The ordination results also displayed transitional states in the distribution of samples along ordination axes. The MRPP results confirmed not only the separation of TWINSPAN groups but also the heterogeneity of group B, which is in accordance with the broad distribution of its samples along DCA axis 1 and NMDS axes 2 and 3. This can suggest a distinct group with *Artemisia sieberi* and *Schismus arabicus* as the dominant species.

The CCA eigenvalues lower than DCA's and some samples which are out of their respective TWINSPAN groups in PCA and CCA ordination space indicated that some important explanatory variables were not included in the analysis or some of the variations in the data set were not explained by environmental variables (Franklin & Merlin, 1992; McDonald *et al.* 1996). There is thus no significant difference between groups in relation to these factors. As the correlations emphasize, these variables have greater effects on the number of species and diversity variables than on the amount of vegetation cover, and the relative cover has a stronger relationship with some variables that have not been measured in this research. Similar findings that soil texture have a greater influence on the number and nature of plants vs. the amount of cover have been reported by Shupe (2005) in southwest Arizona.

The soil analysis also showed the *Artemisia sieberi* community is remarkably related to higher levels of electrical conductivity (EC). The findings are not in accordance with the findings of Jafari *et al.* (2004).

Comparing the EC and pH values measured in this study with the values reported by the Iran Research Institute of Forests and Rangelands in 1997 suggests a succession gradient in soil properties. The soil acidity has changed from 7.7 (neutral) to alkaline (8.9) and the EC levels in the top soil layer (0–15 cm) from 2.66 mS to 0.47 μ S. These can be signs of succession towards the process of desertification. These changes may be due to the physical processes of wind erosion occurring quite often in sand dunes and also due to overgrazing pressure, which in turn increases soil erosion (Shao *et al.* 1988, Dong *et al.* 1993). As the previous report was incomplete from the viewpoint of species composition, determining the effects of these gradients on the floristic structure of the region is not fully possible. *Ephedra strobilacea*, related with neutral pH, (Jafari *et al.* 2004) was supposed to be seen in the region according to the previous report. Its absence, together with the absence of many halophilous species that were expected to be seen in the region, can be due to the above-mentioned processes. The soil texture coarseness in this area and its negative effects on species diversity, together with high rates of soil erosion and heavy grazing with their increasing effects on soil coarseness leading to severe and fast moving process of desertification, confirms the necessity to draw more attention to the area, including the complete exclusion of livestock grazing in order to prevent further degradation of vegetation and to preserve potential sources of biodiversity confined to this region. The results also could help guide better management for the conservation of species diversity in other arid and semi-arid ecosystems.

Acknowledgements

The authors greatly appreciate the University of Isfahan Board of Graduate studies for their financial help and support.

Literature cited

- Akhani H. 2004. Halophytic vegetation of IRAN: Towards a syntaxonomical classification. *Annali di Botanica* **4**:65-82.
- Anderson A.J.B. 1971. Ordination methods in ecology. *Journal of Ecology* **59**:713-726.
- Asri Y. 2003. Plant diversity in Touran Biosphere Reserve. Vol. 305, Publishing Research Institute of Forests and Rangelands, Tehran.
- Boulos L. 1982. Flora of Gebel Uweinat and some neighbouring regions of southwestern Egypt. *Candollea* **37**:257-276.
- Burke A. 2001. Determining landscape function and ecosystem dynamics: contribution to ecological restoration in the southern Namib Desert. *AMBIO* **30**:29-36.
- Chapin III F.S., Schulze E.-D. and Mooney H.A. 1992. Biodiversity and ecosystem process. *Trends in Ecology and Evolution* **7**:107-108.
- Clarke K.R. and Warwick R.M. 2001. Changes in marine communities: an approach to statistical analysis and interpretation, Primer-E Ltd, Plymouth.
- Dong G.R., Sh G.Y. and Jiong J. 1993. Desertification and its control in Gonghe Basin of Qinghai province. Science Press, Beijing.
- El-Ghani M.M.A. and Amer W.M. 2003. Soil-vegetation relationships in a coastal desert plain of Southern Sinai, Egypt. *Journal of Arid Environments* **55**:607-628.
- El-Ghanim W.M., Hassan L.M., Galal T.M. and Badr A. 2010. Floristic composition and vegetation analysis in Hail region north of central Saudi Arabia. *Saudi Journal of Biological Sciences* **17**:119-128.
- El-Ghareeb R. and Shabana M.A. 1990. Vegetation- environment relationships in the bed of Wadi El-Sheikh of Southern Sinai. *Vegetatio* **90**:145-157.
- El-Sheikh M.A. Abbadi G.A. and Bianco P.M. 2010. Vegetation ecology of phytogenic hillocks (nabkhas) in coastal habitats of Jal AZ-Zor National park, Kuwait: Role of patches and edaphic factors. *Flora* **205**:832-840.
- Franklin J. and Merlin M. 1992. Species-environment patterns of forest vegetation on the uplifted reef limestone of Atiu, Managua, Ma'uke and Miti'aro, Cook Islands. *Journal of Vegetation Science* **3**:3-14.
- Gauch Jr. H.G. 1982. Multivariate Analysis in Community Ecology. Cambridge studies in ecology. Cambridge Studies in Ecology, Cambridge University Press, New York.
- He M.Z., Zheng J.G., Li X.R. and Qian Y.L. 2007. Environmental factors affecting vegetation composition in the Alxa Plateau, China. *Journal of Arid Environments* **69**:473-489.
- Heshmati G.A. 2007. Vegetation characteristics of four ecological zones of Iran. *International Journal of Plant Production* **1**:215-224.
- Hill M.O., Bunce R.G.H. and Shaw M.W. 1975. Indicator species analysis, a divisive polythetic method of classification and its application to a survey of native pinewoods in Scotland. *Journal of Ecology* **63**:597-613.
- Hill M.O. 1973. Diversity and evenness: a unifying notation and its consequences. *Ecology* **54**:427-432.
- Hill M.O. and Gauch Jr. H.G. 1980. Detrended correspondence analysis: an improved ordination technique. *Vegetatio* **42**:47-58.
- Hooper D.U. and Vitousek P.M. 1997. The effects of plant composition and biodiversity on ecosystem processes. *Science* **277**:1302-1305.
- Jackson D.A. 1993. Stopping rules in principal component analysis—a comparison of heuristic and statistical approaches. *Ecology* **74**:2204-2214.
- Jafari M., Chahouki M.A.Z., Tavili A., Azarniavand H. and Amiri G.H. 2004. Effective environmental factors in the distribution of vegetation types in Poshtkouh rangelands of Yazd province (Iran). *Journal of Arid Environments* **56**:627-641.
- Kent M. and Coker P. 1992. *Vegetation Description and Analysis: A practical Approach*. Bellhaven Press, London.
- Legendre P. and Legendre L. 1998. *Numerical Ecology: Developments in Environmental Modeling*. Developments in Environmental Modelling, Vol. 20. Elsevier, New York.
- Leigh Jr. E.G. 1965. On a relation between the productivity, biomass, stability, and diversity of a community. *Proceedings of the National Academy of Science USA* **53**:777-783.
- Li X.R., Zhang Z.S., Zhang J.G., Wang X.p. and Jia X.H. 2004. Association between vegetation pattern and soil properties in the southeastern Tengger Desert, China. *Arid Land Research and Management* **18**:369-383.
- Magurran A.E. 1988. Ecological Diversity and its Measurement. Princeton University Press, Princeton.
- McCune B. and Mefford M.J. 1999. PC-ORD. Multivariate analysis of ecological data Version 4.0 for Windows. Available: <<http://bmccune.weebly.com/software.html>>.
- McDonald D.J., Cowling R.M. and Boucher C. 1996. Vegetation environment relationships on a species-rich coastal mountain range in the fynbos biome (South Africa). *Vegetatio* **123**:165-182.

Received:
May 13th, 2015

Accepted:
December 1st, 2015

- McLean E.O. 1982. Soil pH and lime requirement. In: Page A.L. Ed. *Methods of Soil Analysis Part 2, Chemical and Microbiological Properties*, pp 199-224, American Society of Agronomy, Madison.
- Minchin P.R. 1987. An evaluation of the relative robustness of techniques for ecological ordination. *Vegetatio* **69**:89-107.
- Noy-Meir I. 1973. Desert ecosystems: environment and producers. *Annual Review of Ecology and Systematics* **4**:25-51.
- Orloci L. 1966. Geometric models in ecology: I. The theory and application of some ordination methods. *Journal of Ecology* **54**:193-215.
- Shao L., Dong G and Lu, F.G. 1988. Developmental and adverse processes of steppe desertification and law of vegetation succession in Gonghe Basin. *Chinese Journal of Desert Research* **8**:30-40.
- Shupe S.M. 2005. Multivariate characterization of Sonoran Desert vegetation in southwest Arizona using US Army field data. *Plant Ecology* **176**:215-235.
- Ter Braak C.J.F. 1986. Canonical correspondence analysis: a new eigenvector technique for multivariate direct gradient analysis. *Ecology* **67**:1167-1179.
- Ter Braak C.J.F. 1987. The analysis of vegetation-environment relationships by canonical correspondence analysis. *Vegetatio* **69**:69-77.
- Van Sickle J. 1997. Using mean similarity dendrograms to evaluate classifications. *Journal of Agricultural, Biological, and Environmental Statistics* **2**:370-388.
- Ward Jr. J.H. 1963. Hierarchical grouping to optimize an objective function. *Journal of American Statistical Association* **58**:236-244.
- Zarei Gh., Assadi M. and Maassoumi A.A. 2008. Introduction to the flora, life form, habitat and plant geographical distribution of Abarkooh playa (Yazd). *Journal of Research and Construction* **81**:28-38.

Appendix 1. List of species per sampling site, their Growth form, functional group, quadrat number and environmental characters where the species was found

Family	Species	Growth form	Functional group	Quadrat where it was found	Environmental characteristics where the species was found
Apiaceae	<i>Schumania karelinii</i> (Bunge) Korovin	Ch	Psam	4,41	Lower sand dunes
Asteraceae	<i>Artemisia sieberi</i> Besser	Th	Xer	21,22,23,27,29,30,31,32,34,35,36,37,38,40,41,45,46,47,50,51,52,60	Gravel plain
Asteraceae	<i>Micropus supinus</i> L.	Th	Xer	4	Lower sand dunes
Asteraceae	<i>Senecio vernalis</i> Waldst. & Kit.	Th	Xer-Psam	45,46,50,52,58,59,60	Gravel plain
Boraginaceae	<i>Heliotropium transoxanum</i> Bunge	Ch	Psam-hal	4	Lower sand dunes
Brassicaceae	<i>Erysimum repandum</i> L.	Th	Xer	40,50	Gravel plain
Brassicaceae	<i>Sterigmostemum rhodantum</i> Rech. f. Allen & Esfand.	Th	Xer	17,18	Lower sand dunes
Chenopodiaceae	<i>Cornulaca aucheri</i> Moq.	Th	Psam-hal	1,3,5	Lower sand dunes
Chenopodiaceae	<i>Halocharis</i> sp Moq.	Th	Hal	16,17,18,19,20,35,36,37,44,46,60	Lower sand dunes
Chenopodiaceae	<i>Haloxylon ammodendron</i> (C. A. Mey.) Bunge ex E. Fenzl	Ph	Psam-hal	43,48,50,56,57	Higher sand dunes
Chenopodiaceae	<i>Londesia eriantha</i> Fisch. & C. A. Mey.	Th	Xer-Psam	4,6,7,9,13,15	Lower sand dunes
Chenopodiaceae	<i>Salsola tomentosa</i> (Moq.) Spach	He	Xer-hal	4	Lower sand dunes
Cyperaceae	<i>Cyperus conglomeratus</i> Vahl	He	Psam	12	Lower sand dunes
Dipsacaceae	<i>Scabiosa olivieri</i> Coult.	Th	Xer-Psam	41,51,58	Gravel plain
Fabaceae	<i>Astragalus tribuloides</i> Kotschy ex Bunge	Th	Psam	20,41,45,46,59,60	Lower sand dunes
Fabaceae	<i>Astragalus squarrosus</i> Bunge	Ph	Xer	9,11,13	

Appendix 1. Continuation.

Family	Species	Growth form	Functional group	Quadrat where it was found	Environmental characteristics where the species was found
Geraniaceae	<i>Erodium cicutarium</i> L.	Th	Xer-Psam	1,2,3,4,5,6,7,14,15,17,19,20,37,41,47,52,58,60	Lower sand dunes
Poaceae	<i>Boissiera squarrosa</i> (Banks & Sol.) Eiq	Th	Xer-Psam	2,4,5,11	Lower sand dunes
Poaceae	<i>Bromus tectorum</i> L.	Th	Psam	1,2	
Poaceae	<i>Cutandia memphitica</i> Benth.	Th	Psam	5,6,7	Lower sand dunes
Poaceae	<i>Eremopyrum bonaepartis</i> (Spreng.) Nevski	Th	Psam-xer	3	Lower sand dunes
Poaceae	<i>Schismus arabicus</i> Nees	Th	Xer-hal	3,5,6,7,8,9,10,11,12,13,14,15,17,18,20,35,36,37,41,42,46,47,49,50,51,52,54,57,58,59,60	Lower sand dunes
Poaceae	<i>Stipagrostis pennata</i> (Trin.) De Winter	He	Psam	2,6	Lower sand dunes
Poaceae	<i>Stipagrostis Plumosa</i> Munro ex T. Anderson	He	Xer-Psam	1,2,3,5,6,7,8,10,12,13,14,15,16,17,18,19,20	Lower sand dunes

Note: Hal, Halophyte; Xer, Xerophytes; Xer-hal, Xero-halophytes; Psam, Psamophyte; Psam-hal, Psamo-halophytes; Psam-xer, Psamo-xerophytes.