

Wages and inflation in Mexican manufacturing. A two-period comparison: 1994-2003 and 2007-2016*

Salarios e inflación en la manufactura mexicana. Un comparativo de dos periodos: 1994-2003 y 2007-2016

Received: 20/February/2021; accepted: 27/July/2021; published: 01/September/2021

<https://doi.org/10.24275/uam/azc/dcsh/ae/2021v36n93/Carbajal>

*Carolina Carbajal-De-Nova***

ABSTRACT

The effect of wages on price inflation has been a foremost subject in economics. This paper evaluates the effect in Mexican manufacturing for two sets of periods. The first one, from 1994 to 2003, covers an initial period of the North American Free Trade Agreement (NAFTA). The second period encompass from 2007 to 2016, comprising the Great Recession. For both periods, data is available on a monthly frequency. A first equation deals with wages and bilateral nominal exchange rate impacts on the producer price inflation. A second equation measures the effect of this last variable, besides a bilateral nominal exchange rate and the wage effect on consumer price inflation. These equations follow Pujol and Griffiths (1997), using an error correction model and Granger causality tests. The results for the mentioned periods expose those wages have an almost null effect in both the inflation of producer and consumer prices.

Keywords: wages; consumer price inflation; producer price inflation; bilateral nominal exchange rate.

JEL Classification: J00; J3.

RESUMEN

El efecto de los salarios en la inflación ha sido un tema destacado en economía. Este documento evalúa ese efecto en la manufactura mexicana para dos periodos. El primer periodo, de 1994 a 2003, cubre un periodo inicial del Tratado de Libre Comercio de América del Norte (TLCAN). El segundo periodo comprende de 2007 a 2016, abarcando la Gran Recesión. Una primera ecuación estima el impacto de los salarios y del tipo de cambio nominal bilateral, sobre la inflación de precios al productor. La segunda ecuación mide el efecto de esta última variable, así como del tipo de cambio nominal bilateral y los salarios, sobre la inflación de precios al consumidor. Estas ecuaciones siguen a Pujol y Griffiths (1997), utilizando un modelo de corrección de error y pruebas de causalidad en el sentido de Granger. Los



Esta obra está protegida bajo una Licencia Creative Commons Reconocimiento-NoComercial-SinObraDerivada 4.0 Internacional

* I am grateful for the comments and suggestions of the anonymous reviewers.

** Economics Professor, Department of Economics, Faculty of Social Sciences and Humanities, Autonomous Metropolitan University at Iztapalapa. Mexico City, Mexico. E-mail: enova@xanum.uam.mx.

resultados para ambos periodos antes mencionados ponen de manifiesto un efecto básicamente nulo en la inflación de precios al productor y al consumidor

Palabras clave: inflación de precios al consumidor; inflación de precios al productor; salarios; tipo de cambio nominal bilateral.

Clasificación JEL: J00; J3.

INTRODUCTION

The effect of wages on inflation has been a foremost subject of interest in economics. According with the traditional theory, the cost-push or the mark-up price function explain how wages increases are transferred into prices. It seems worth researching and testing this tenet empirically. In this regard, during the 1950-1960's substantial studies were made by Phillips (1958), Dicks-Mireaux and Dow (1959), Klein, Ball, Hazlewood and Vandome (1961), and Lipsey and Steuer (1961). Continuation over similar research lines are presented in Stigler (1966), Rotemberg (1987), Merton and Upton (1988), Hall and Taylor (1989), Ball and Mankiw (1995), Romer (1996), Pujol and Griffiths (1997), Varian (1999), Galí and Gertler (1999), Woodford (2003), Christiano et al., (2005), Uhlig (2005), Galí et al., (2007), Galí (2008), Coibion and Gorodnichenko (2013), Mankiw (2015), Féve and Sahuc (2017), and Cantore et al., (2021).

This paper contributes to the analysis of the effect of wages on inflation in Mexican manufacturing. A mark-up price function econometric test is performed to gauge this effect. Besides, a two-period comparison, i.e., 1994-2003 and 2007-2016 is performed. An error correction econometric model is used with monthly frequency. The first period starts with the enactment of the North America Free Trade Agreement (NAFTA). A second period is associated with the beginning of the Great Recession. The econometric results could provide useful inference about the inflationary nature of wages in the Mexican case¹.

Manufacturing wage performance is gauged using an error correction model for the above-mentioned sets of periods. A first equation deals with wages and bilateral nominal exchange rate impacts on producer inflation. A second equation measures producer price index, bilateral nominal exchange rate, and wage effect on consumer inflation. These equations follow the work of Pujol and Griffiths (1997), who use an error correction model and Granger causality tests to estimate the econometric relationships embedded in the mark-up price function. The Granger causality tests results are an informed guided to equation specification.

The error correction model results could prove or discard theoretical tenets, in this case, regarding the empiric effect of wages on inflation. The implementation of this kind of model is suitable, when there is a lack of specific data generating models in the body of traditional theory².

In this paper, wages are represented by the nominal average production wages per person for the whole manufacturing sector. The manufacturing production price index without oil represents a weighted measure of intermediary inputs costs³. The consumer price index gauges the finished goods price change. The bilateral nominal exchange rate between Mexico and the United States represents an adjustment price in an open economy, with imperfect competition and asymmetric information⁴.

Questions represented by income policies, rational expectations, the Phillips curve identification, quantitative equation, structural changes, Penn effect and their testing are beyond the scope of this research.

¹ According with Johansen (2004) econometric analysis would give useful inference.

² "The time has certainly come to consider the relationship between the statistical models of wages and price determination and the body of traditional theory on real factor prices, factor shares and resource allocation" Sargan (1964).

³ The manufacturing price production index without oil is not biased by comprising this fuel. In Appendix 1 is presented the data description with sources, base years, and transformations.

⁴ The adjustment effect of the nominal exchange rate on price equations in an open economy is being explained extensively as the "Penn effect" by Samuelson (1994).

These problems have been dealt with extensively in the literature. Evidence of these issues can be found in Chow, 1960; Lucas, 1972; Wallis, 1979; Desai, 1975; Henry and Ormerod, 1978; Samuelson, 1994; Lucas, 1996; Melnick and Strohsal (2017), for instance.

This paper is organized as follows. Section I presents a brief literature review, where theoretical models place wages as an inflationary source. The second section presents a non-parametric data assessment by means of descriptive statistics. Besides, a figure comparison is presented for both periods under analysis, i.e., 1994-2003 and 2007-2016. Section III proposes an econometric model based on an error correction model. The econometric model is applied for Mexican manufacturing, for these two periods. Section IV examines the econometric results. Finally, the conclusions recount the empirical findings and their statistical inference.

I. BRIEF LITERATURE REVIEW

The inflationary nature of wages is often examined through the standard costs-push price formation model. Modifications of this basic model results on different models, i.e., the mark-up price function and inflation wage-price spirals. On one hand, the short and long term costs-push and mark-up price functions imply that, in presence of money neutrality, production costs increases are transferred fully into output prices (Rotemberg, 1987). On the other hand, short term wage-price spiral function assumes price rigidities, where production costs increase is sluggishly transferred into output prices⁵.

As a modification of the costs-push model, the mark-up price function formalizes the relationship among wages, producer, and consumer prices. In the New Keynesian framework, a costs-push model is represented by a one-time shock in marginal costs. These costs could be measured through labor costs, the mark-up, or both. According with Coibion and Gorodnichenko (2013), New Keynesian models suggest that marginal costs are a relevant source of inflationary pressures. In the New Keynesian Phillips curve labor income share is used as a proxy for marginal costs, where it could affect real quantities like the Gross Domestic Product (Woodford (2003), Galí and Gertler (1999)). Galí (2008) assumes perfect labor mobility, while capital is fixed and normalized to one.

The aggregate economic activity is examined by New Keynesians using micro foundations. In the case of Christiano et al. (2005), wage contracts have a key role in nominal price rigidities. These rigidities could account for inertial responses in inflation, and a persistent response in output. For instance, Romer (1996) considers a short-term mark-up price function composed by sticky wages and flexible output prices. Under imperfect competition and asymmetric information his mark-up function is represented as follows:

$$P = \frac{W}{F'(L)}(1 + \mu) \quad (1)$$

where W stands for wages, $F'(L)$ is the first order condition of the production function with respect to labor, $\frac{W}{F'(L)}$ stands for marginal costs, μ is a mark-up and P is output price⁶.

Continuing with Romer (1996), the dynamics to establish a long-term mark-up price function considers wages at time t , as determined by prices with one period-lag $t - 1$. In this way, price flexibility is

⁵ The theoretical models presented in this section are related with the cost-push price formation model and its modifications. The test of different theoretical models about price formation, *e.g.*, rational expectations (uses no observable data), and dynamic stochastic general equilibrium, quantitative equation (a paper related with its theory and testing for the Mexican case is in Carbajal (2018)), go beyond the scope of this research.

⁶ A neo-classical theory assumption holds here: the first order condition of the production function with respect to labor is equal to the labor compensation itself.

introduced in the previous short term static equation (1). The long-term dynamic mark-up price function becomes:

$$W_t = A_{t-1}P_{t-1} \quad (2)$$

where $A > 0$ stands for a positive constant with one period-lag $t - 1$, P_{t-1} is output price with one period-lag, W_t is nominal wages at time t .

To evince the dynamics on equation (2) consider an inflationary trigger at $t = 1$. This trigger could be either an expansionary monetary or fiscal policy. Consider that the inflationary trigger rebounds in a price increase, i.e., $P_1 > P_0$, with $t = 1$ and $t - 1 = 0$.

$$W_1 = A_0P_0 \quad (2)'$$

$$W_2 = A_1P_1 \quad (2)''$$

The above inflationary trigger implies for equations (2)' and (2)'' that $W_2 > W_1$. An inflationary wage-price spiral is already expressed in equation (2)' and (2)'', since $W_{t+1} > W_t$. Also, an inflationary wage price-spiral arises if $A_1 > A_0$. In this case, wages are larger than those in the previous period, e.g., $W_2 > W_1$. The same could happen if $P_1 > P_0$. Consider now the ratio of equation (2)'' to equation (2)':

$$\frac{W_2}{W_1} = \frac{A_1P_1}{A_0P_0} \quad (3)$$

In general equation (3) can be expressed as $\frac{W_{t+1}}{W_t} = \frac{A_tP_t}{A_{t-1}P_{t-1}}$. If the dynamics on equation (3) is maintained in each subsequent period, then wages and prices will increase each period ahead. This is because there is a mutual feedback process between equations (2)'' and (2)'. The ratio expressed in equation (3) is expected to be positive and bigger than one, since the numerator is larger than the denominator, e.g., $W_2 > W_1$. These relationships give way to a wage price-spiral where changes in magnitude are real. Now, consider that A exhibits equal values for periods 1 and 0, e.g., $A_1 = A_0$.

$$\frac{W_2}{W_1} = \frac{A_1P_1}{A_0P_0} = \frac{A_0P_1}{A_0P_0} \quad (3)'$$

in the expression above A_1 and A_0 cancels out from the last expression, assuming perfect information and absence of asymmetries. Rewritten equation (3)' yields:

$$\frac{W_2}{W_1} = \frac{P_1}{P_0} \quad (3)''$$

equation (3)'' implies that changes in A are only nominal, without affecting real quantities. In equation (3)'' money neutrality arises since nominal changes left untouched wages and prices. In this example, A plays a similar role to the well-known Friedman (1956) constant, which is often seen as a monetary policy rule. This constant could account for inflation changes in the short term (equation (3)), but neutrality in the long term (equation (3)''). Sometimes, the Friedman constant is used to control inflation by monetary authorities⁷.

⁷ In this paper, the interpretation of the Friedman constant does not consider other inflation controls, such as the interest rate.

Pujol and Griffiths (1998) present a variation of the previous mark-up price function, as follows:

$$\text{PPI} = (1 + \mu) \left[\frac{P_{IC}IC + WL}{Y} \right]^\alpha \quad (4)$$

where PPI is a manufacturing producer price index representing a proxy for output prices, WL stands for wage costs, W is wages, L is labor, $P_{IC}IC$ is defined as the intermediate inputs costs, Y is output, μ stands for the mark-up, $\frac{P_{IC}IC + WL}{Y}$ represents unit variable costs, $\left[\frac{P_{IC}IC + WL}{Y} \right]^\alpha$ stands for marginal costs, α represents a constant share in producer prices.

Pujol and Griffiths (1998) consider that output affects prices through at least two distinct channels. The first one is related with marginal costs. For example, with increasing returns to scale and holding factor prices constant, marginal costs would decline as output increases. The second channel is through the effect on the mark-up effect. According with equation (4) if the mark-up (μ) increases, then producer prices would increase directly in the same proportion.

Merton and Upton (1988) and Stigler (1966) present similar costs-push tenets. For their part, Hall and Taylor (1989) consider price formation as a positive constant time marginal cost. An analysis of the inflationary wage-price spiral is made by Blanchard (1993). Independently, Ball and Mankiw (1995) set prices as a mark-up over marginal costs under a monopoly environment. Similar positions are held by Varian (1999), as well as Mankiw (2015).

The above literature review presents price formation models based on costs-push model modifications. On one hand, wages are an important component of production costs. The long-term dynamics of the model is expounded by two possible outcomes: an increase in production costs is transferred into output prices; or factor prices increases cancel out leaving real quantities without change. On the other hand, the mark-up is assumed to be payment for capital use, financial services, and depreciation costs. In brief, net domestic product after labor costs. Capital production input is an exogenous variable on the mark-up function. In this paper, only endogenous variables are dealt with in the econometric analysis. As a result, capital factor costs are not considered to be part of this research.

II. DATA DESCRIPTION

Descriptive statistics

The 1994-2003 data is taken from *Encuesta Industrial Mensual* (EIM), which comprises 205 industrial activities. The 2007-2016 data come from *Encuesta Mensual de la Industria Manufacturera* (EMIM), which copes with 240 industrial activities. These two surveys differ in time availability, methodologies, and industrial activities⁸. Therefore, they are addressed individually. The first period is related with the enactment of the North America Free Trade Agreement (NAFTA). The second period is associated with the beginning of the Great Recession.

On table 1 the summary statistics of the time series used in this research are reported. These time series comprise: Mexican manufacturing wages, producer and consumer price indexes and bilateral nominal exchange rate for the periods of 1994-2003 and 2007-2016. The summary statistics are the mean (Mean), standard deviation (SD), kurtosis (KT), and the coefficient of variation (CV). The purpose of table 1 is the description of the data principal trends.

⁸ The number of industrial activities has been shortened by INEGI from 240 to 235 for the period of 2013 to 2021.

Table 1
Summary statistics. Wages, producer and consumer price indexes and bilateral nominal exchange rate. Selected periods, monthly frequency

Indicator	Statistic	Periods	
		1994:01-2003:02	2007:01-2016:06
wages	Mean	3.10	5.13
	SD	1.35	0.64
	KT	2.61	3.99
	CV	0.44	0.12
producer price index	Mean	44.68	94.14
	SD	15.16	10.03
	KT	1.90	2.26
	CV	0.34	0.11
consumer price index	Mean	47.45	102.18
	SD	17.20	10.91
	KT	1.74	1.81
	CV	0.36	0.11
bilateral nominal exchange rate	Mean	8.14	13.18
	SD	2.00	1.90
	KT	3.78	4.02
	CV	0.25	0.14
	n	110	114

Note 1. Wages stand for nominal average wages per production worker for Mexican manufacturing as a whole; producer price index stands for manufacturing producer index excluding oil; bilateral nominal exchange rate represents Mexican pesos per U.S. dollar. All variables are in levels. Detailed explanations for units and base years are reported in Appendix 2. Note 2. 1994:01-2003:02 stands for January 1994 to February 2003; 2007:01-2016:06 stands for January 2007 to June 2016, and n is the number of observations.

Source: Own estimates based on Instituto Nacional de Estadística y Geografía (INEGI).

In table 1, nominal wages Mean has increased from 3.10 to 5.13. Meanwhile their SD has decreased from 1.35 to 0.64. Their KT has increased towards the second period e.g., from 2.61 to 3.99, denoting a higher wage process persistence⁹. Wages reduce their volatility throughout time, as its CV decreases from 0.44 to 0.12 for the 1994-2003 and 2007-2016 periods, respectively. This CV value indicate that wages dispersion decreased around the mean.

⁹ Following Douc *et al.* (2014) a higher KT conveys a higher persistence in data processes.

For its part, manufacturing producer price index has Mean values of 44.68, and 94.14 for each period, respectively. This increase indicates that the manufacturing producer price index has gain base points across time. Its SDs are 15.16 and 10.03 for each period, which points out to a decrease in volatility over time. Its KT increases over time, with values going from 1.90 to 2.26 for each period indicating a lesser variance in its process. Its CV decreases from the first period 0.34 towards 0.11 in the last period, which indicates that its process gains in stability.

The consumer price index Mean increases in base points over time from 47.45 to 102.18. Also, this index becomes more stable in its trend and structure for the last period. This stability is seen in its statistics: its SD decreases over time with values of 17.20 to 10.91 for each period under study, respectively. Its KT increases modestly over time, with values that go from 1.74 to 1.81 pointing out structural stability. Regarding its CV values they decrease from 0.36 on 1994-2003 to 0.11 on 2007-2016, which implies less volatility.

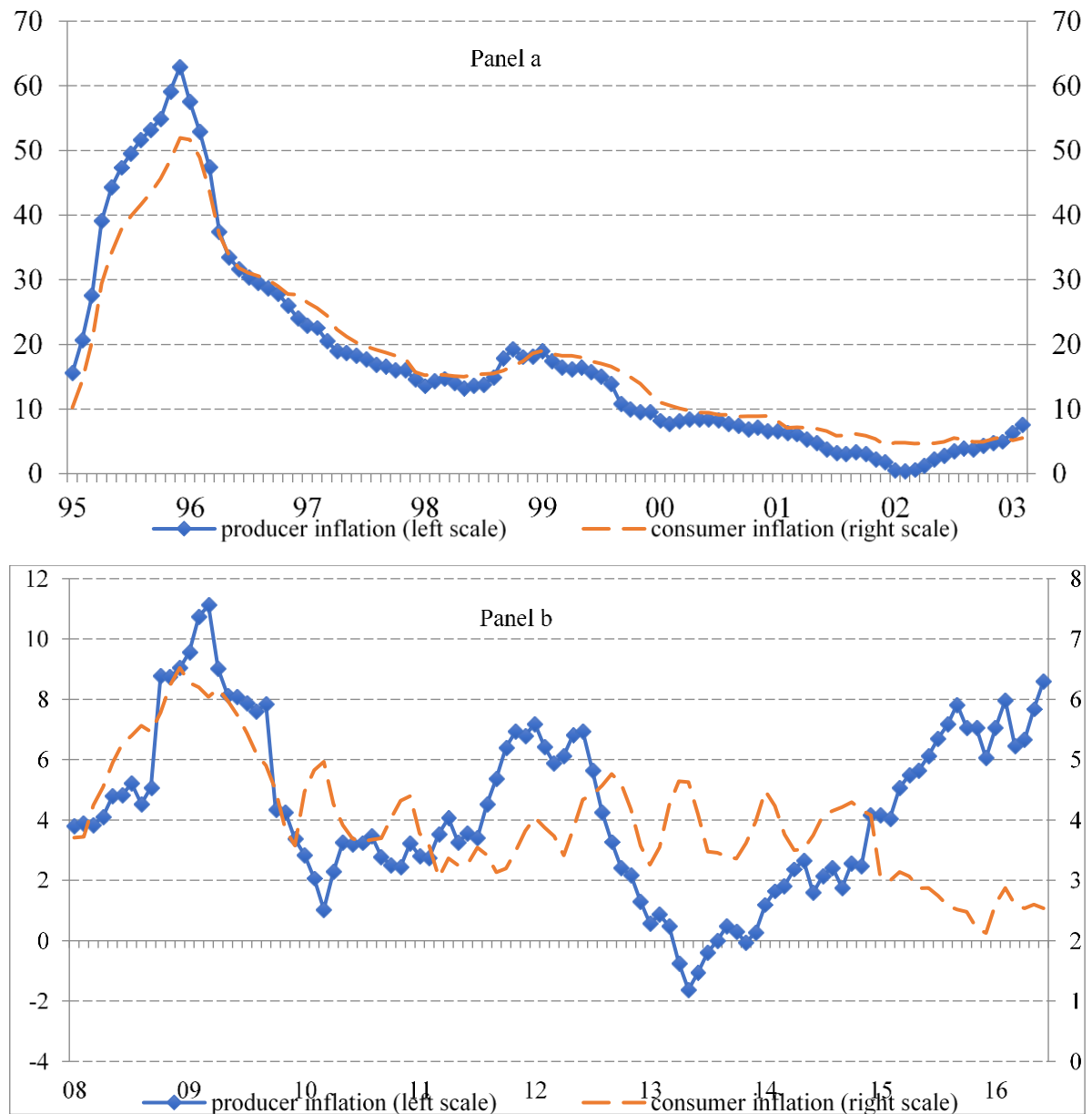
The bilateral nominal exchange rate between Mexican pesos per American dollar increases over time. This is a systematic fact regarding this nominal exchange rate between these two currencies. The nominal exchange rate has a mean value that goes from 8.14 to 13.18 in each period, respectively. Its SD decreases over time with values from 2.00 to 1.90 for each period, respectively. These values imply that the bilateral nominal exchange rate has a decrease in volatility. For its part, its KT increases over time with values that go from 3.78 to 4.02 denoting an increase in its persistence. Its CV remains without much change on both periods, e.g., 0.25 and 0.14, denoting a higher stability.

Figure analysis

In what follows, a figure analysis on annual growth rates is performed for the time series reported on table 1. The following figures represent annual growth rates, which are computed on an annual basis: month year-on-month year percentage change. One year of observations in both periods is lost because of the annual growth rates computation.

Left panels represent the period of 1995-2003, and the right panels depict the period 2008-2016. Figure 1 contains two panels depicting the same pair of variables for each period. This arrangement facilitates graphic annual growth rates comparison among periods.

Figure 1
Mexico. Producer and consumer inflations. Annual growth rates (%). Selected periods



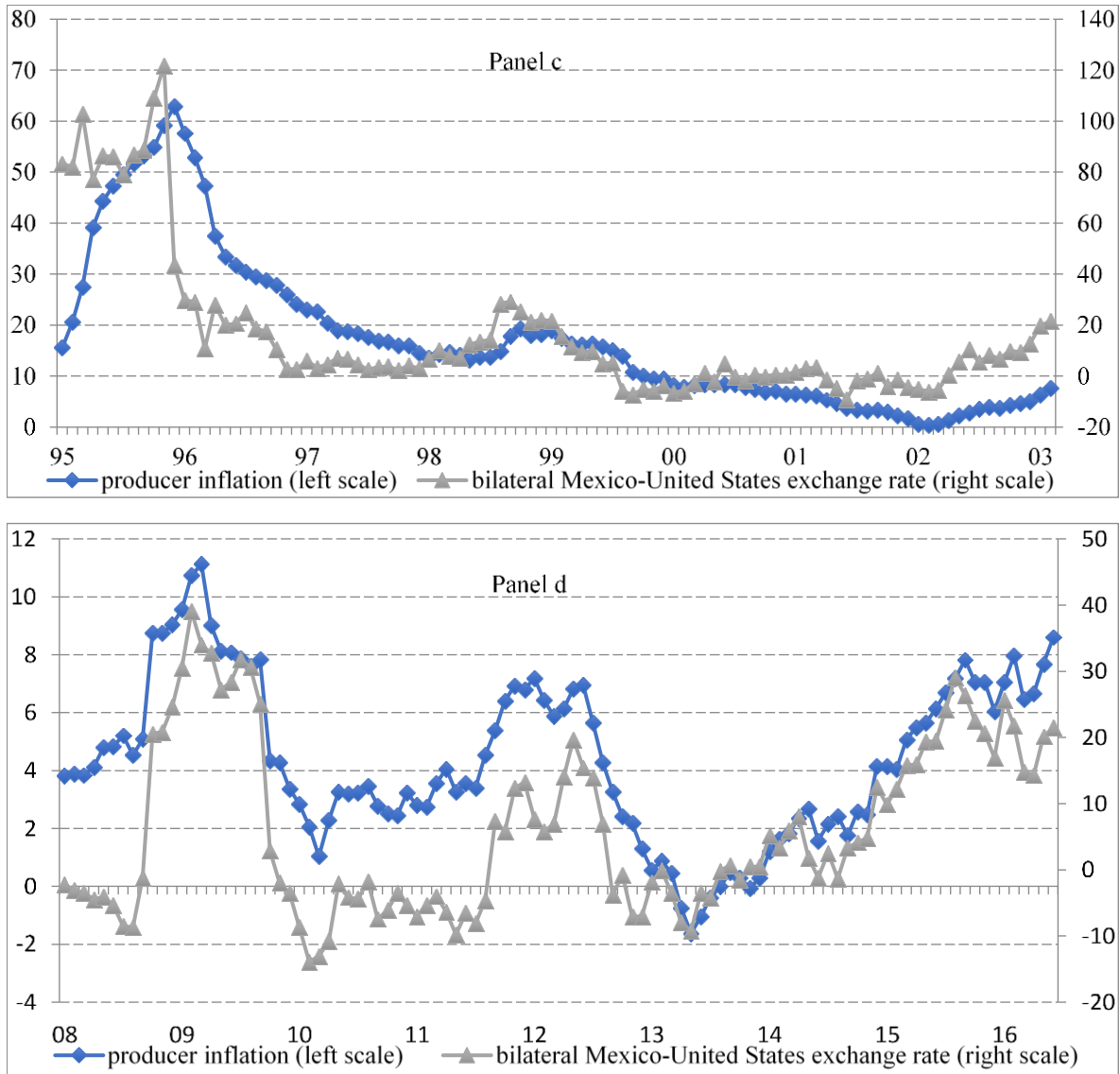
Source: Own computations based on National Institute of Statistics and Geography (INEGI).

Panels a and b on Figure 1 display producer and consumer inflation for the periods of 1995-2003 and 2008-2016, respectively. Panel (a) shows that producer and consumer inflation move almost hand in hand. The differences in Mean and SD for these two variables do not allow seeing this parallelism. However, their KT and CV values do because they do not have units. Therefore, they can be applied to annual growth rates description without unit problems. These statistics values are similar: 1.90 vs. 1.74 for KT, and 0.34 vs. 0.36 for CV, for each period. The high inflation depicted during 1995 could be linked with the Mexican

peso devaluation of 1994. This last events account for the large axis size on panel (a). As a result, panel a registers inflation around the 60 points. Panel (b) scales do not overpass the 11 points. If, there was a lens in panel (a) around the 10 points scale, then it could be seen that there is a continuation of the producer and consumer inflation scales from period to period. The changes in scale could made the data look different across periods. Panel (b) shows almost two trends between consumer and producer inflations: simultaneity until 2009, 2011 and 2012; and only inverse for the last year.

Figure 2

Mexico. Producer and bilateral nominal exchange rate. Annual growth rates (%). Selected periods

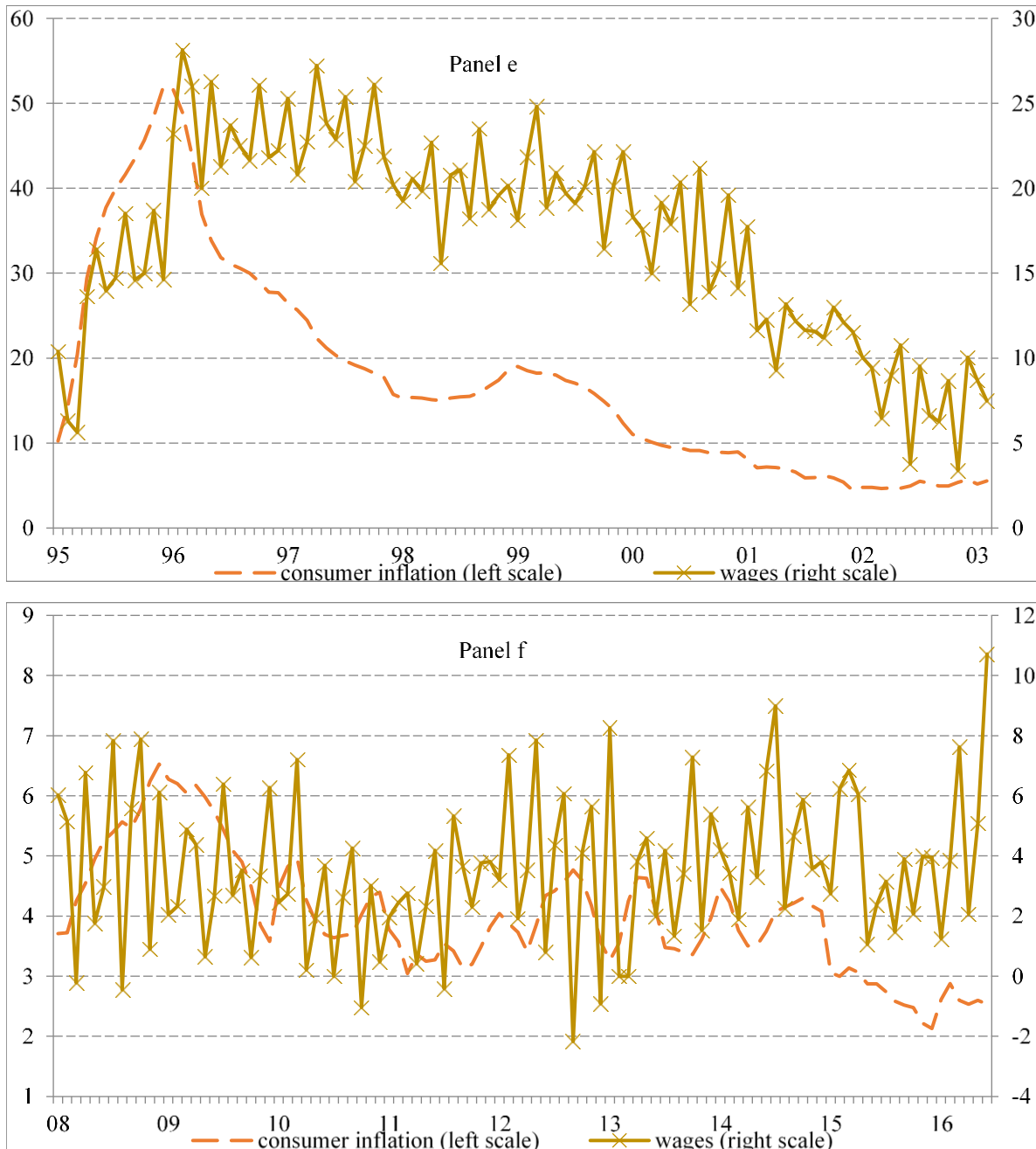


Source: Own computations based on National Institute of Statistics and Geography (INEGI).

In Figure 2, Panels (c) and (d) display producer inflation and bilateral nominal exchange rate for the periods of 1995-2003 and 2008-2016, respectively. In both panels, these time series move almost in parallel

way. Also, it seems that during the first and second periods there is a positive relationship between producer inflation and the bilateral exchange rate.

Figure 3
Mexico. Producer and consumer inflations. Annual growth rates (%). Selected periods



Source: Own computations based on National Institute of Statistics and Geography (INEGI).

Panel (e) and (f), figure 3, show that wages have a positive relationship with respect to consumer inflation. Similar figures could be observed if wages and producer inflation were plotted¹⁰. During the period from 1995 to 2003 the growth of wages is modest with respect to consumer inflation. This behavior is reverted during the last period of 2008 to 2016, where it seems that there is less variance between wages and consumer inflation.

III. METHODOLOGY

An error correction model is applied to Mexican manufacturing. The comparison of the results is performed for two distinct periods, i.e., 1994-2003 and 2007-2016. Originally, this model was put forward by Pujol and Griffiths (1998) for the Polish economy. It has been followed by other authors, i.e. Carbajal (2003), Stockhammer et al. (2009), Onaran et al. (2011), Onaran and Galanis (2014), Onaran and Obst (2015). In the Pujol and Griffiths model local prices are a function of labor costs and import prices. It is based on a mark-up pricing model in an imperfect competitive economy. The theoretical part of Pujol and Griffiths model has been previously exposed in section I.

Sargan (1964) explains that the error correction model departs from an empirical basis. His wage-price equations are tested by means of an error correction model. This author mentions that one of the best ways to prove traditional theory is using empirical tests. This is because there is a lack of data generating models that provide unicity between theory and empirics. Other authors who test theory through this empiric lens are Hickman and Klein (1984), Hendry and Wallis (1984), and Spanos (1995). In the case of Cantore et al., (2021), they mention that in a wider set of models there is a puzzling mismatch between data and theory. Being this the present paper case, then the error correction model is suitable to prove or discard theoretical tenets.

The long-term producer and consumer price indexes reduce form follows Pujol and Griffiths (1998)¹¹:

$$\log(\text{ppi}) = \beta_0 + \beta_1 \log(w)_t + \beta_2 \log(e_0)_t + (\varepsilon\text{cm}_5)_t \quad (5)$$

$$\log(\text{cpi}) = \beta_3 + \beta_4 \log(w)_t + \beta_5 \log(e_0)_t + \beta_6 \log(\text{ppi})_t + (\varepsilon\text{cm}_6)_t \quad (6)$$

where ppi represents the production price index for the whole manufacturing; w is the nominal average production wages per person for the whole manufacturing; e_0 is the bilateral nominal exchange rate between Mexico and the United States; cpi stands for consumer price index; εcm_5 and εcm_6 stand for the error correction terms for equations (5) and (6); the subscript t stands for time; β_0, \dots, β_6 represent minimum ordinary least squares estimators.

Pujol and Griffiths explains that equation (5) measures the impact of the exchange rate on producer prices, since it affects the costs of import intermediate inputs. Also, the exchange rate may influence the mark-up of domestic firms: when the currency appreciates, margins shrink in those sectors most exposed to foreign competition.

¹⁰ These figures are available upon request to the author.

¹¹ It would be ideal to have monthly output data. However, in Mexico output is reported on a quarterly basis. Thus, quarterly output cannot be incorporated in the reduced equations, which have monthly frequency.

Equation (6) is largely an account identity, as Pujol and Griffiths explain. This is in so far as it is a weighted average of producer price indices and import prices. Equation (6) incorporates wages since consumer goods are often more labor intensive than typical industrial goods. These authors mention that using exclusively the ppi would underestimate the influence of wages; besides, wages represent an important variable cost for retailers.

The numbers above each equation (5) and (6), represent the long run reduced form hypotheses. According with the New Keynesians in the long run all prices are flexible, as express in equation (3)'. Thus, the expected values for the estimators β_1 , β_4 , β_6 referring to local prices are equal to one. The bilateral exchange rate expected values β_2 , and β_5 are also equal to one.

Equations (5) and (6) keep an analogy to the wage-price core relationships on LINK models. These models basically study national macroeconomic equilibria. In this type of models, the economic equilibria are often denoted by accounting identities (Hickman and Klein, 1984). The short-term error correction equations are:

$$\Delta \log(\text{ppi}) = \beta_7 + \beta_8 \Delta \log(w)_{t-1} + \beta_9 \Delta \log(e_0)_{t-1} + (\text{ecm}_5)_{t-1} + (\xi_7)_t \quad (7)$$

$$\Delta \log(\text{cpi}) = \beta_{10} \Delta \log(w)_{t-1} + \beta_{11} \Delta \log(e_0)_{t-1} + \beta_{12} \Delta \log(\text{ppi})_{t-1} + (\text{ecm}_6)_{t-1} + (\xi_8)_t \quad (8)$$

where the symbol Δ represents the first differences operator, and \log represents the logarithmic operator. Together, these two operators allow reading the estimators as elasticities. The subscript l represents lags; $(\text{ecm}_5)_{t-1} = \log(\text{ppi})_{t-1} - \beta_0 - \beta_1 \log(w)_{t-1} - \beta_2 \log(e_0)_{t-1}$, and $(\text{ecm}_6)_{t-1} = \log(\text{cpi})_{t-1} - \beta_3 - \beta_4 \log(w)_{t-1} - \beta_5 \log(e_0)_{t-1} - \beta_6 \log(\text{ppi})_{t-1}$. The terms ξ_7 and ξ_8 represent the error terms from equations (7) and (8), which are assumed to be independent and identically distributed.

The short-term equations (7) and (8) are intended to gauge the inflationary effect of wages in producer and consumer inflation. The elasticities introduce producer and consumer inflations. Thus, equations (7) and (8) test wage inflationary effects on producer and consumer inflations.

IV. RESULTS

Table 2
Error correction model estimators and statistics. Producer price inflation, monthly frequency

independents (standard error)	dependent data			
	equation 5 long term log(ppi)		equation 7 short term $\Delta \log(\text{ppi})$	
	1994-2003	2007-2016	1994-2003	2007-2016
log(w)	0.48 (16.80)***	0.35 (6.64)***		
1994-2003 $\Delta \log(w)_{t-0}$ 2007-2016 $\Delta \log(w)_{t-3}$			0.03 (4.05)***	0.01 (2.72)***
log(e ₀)	0.64 (15.78)***	0.46 (10.10)***		
1994-2003 $\Delta \log(e_0)_{t-1}$ 2007-2016 $\Delta \log(e_0)_{t-0}$			0.04 (1.78)**	0.12 (10.00)***
(ε_{cm5}) _{t-1}			-0.14 (-8.77)***	-0.03 (-3.57)***
c	1.92 (30.34)***	2.79 (31.73)***	0.01 (12.14)***	0.00 (7.88)***
R ² _{adj}	0.96	0.79	0.57	0.50
Akaike	-2.18	-3.13	-6.45	-8.10
n	110	114	108	110

Note: ***: 99% of statistical significance, **: 95% of statistical significance, *: 90% of statistical significance, n is number of observations.

Source: Own estimations based on INEGI and Banco de México (2021).

Table 3
Error correction model estimators and statistics. Consumer price inflation, monthly frequency

independents (standard error)	dependent data			
	equation 6 long term log(cpi)		equation 8 short term $\Delta \log(\text{cpi})$	
	1994-2003	2007-2016	1994-2003	2007-2016
log(w)	0.10 (10.15)***	0.07 (3.37)***		
1994-2003 $\Delta \log(w)_{t-0}$ 2007-2016 $\Delta \log(w)_{t-3}$			0.01 (5.14)***	0.01 (2.22)***
log(e ₀)	-0.15 (-11.71)***	-0.14 (-6.42)***		
1994-2003 $\Delta \log(e_0)_{t-2}$ 2007-2016 $\Delta \log(e_0)_{t-2}$			0.01 (1.67)***	0.04 (3.30)***
log(ppi)	1.05 (60.953)***	1.07 (33.12)***		
$\Delta \log(\text{ppi})$			0.80 (26.97)***	0.25 (4.19)***
$(\varepsilon \text{cm}_6)_{t-1}$			-0.19 (-6.22)***	-0.04 (-1.47)**
c	0.09 (2.72)***	0.01 (0.07)	0.00 (4.39)***	0.00 (9.05)***
R _{adj} ²	1.00	0.98	0.89	0.31
Akaike	-5.62	-5.28	-8.18	-8.07
n	110	114	107	110

Note: ***: 99% of statistical significance, **: 95% of statistical significance, *: 90% of statistical significance, n is number of observations.

Source: Own estimations based on INEGI and Banco de México (2021).

The results reported on table 2 indicate that for the long term, there is a positive relationship between manufacturing producer price index, wages, and bilateral exchange rate in the long and short terms. In the long term the corresponding estimators are 0.48 and 0.64 for 1994-2003, and 0.35 and 0.46 for 2007-2016. For the short-term equation (7), wage inflation effect on manufacturing producer inflation is almost nil, for both periods. That is to say, β_8 is equal to 0.03 and 0.01 for each period, respectively. A similar situation is presented in equation (7), with respect to the manufacturing producer inflation and the bilateral exchange rate, where β_9 is equal to 0.04 and 0.12 for each period, respectively.

The results reported on table 3 indicate that for the long term, equation (6) has a positive relationship between consumer and wage inflations: β_4 has values of 0.10 and 0.07 for the periods 1994-2003 and 2007-2016, respectively. However, these estimators are close to zero. For the short-term equation (8) the wage inflation effect on consumer inflation is almost nil, for both periods. That is to say, β_{10} is equal to 0.01 for both periods. A similar situation is presented in the relationship between consumer inflation and the bilateral exchange rate in the short term, with β_{11} equal to 0.01 and 0.04, for each period respectively. In the long term, the relationship between consumer inflation and the bilateral exchange rate in equation (6) is negative, with values close to zero: -0.15 and -0.14, for each period respectively. The relationship between consumer and producer inflations in equation 8 is positive with estimators of 0.80 and 0.25, for each period respectively. Regarding this last relationship in the long term, equation (6), almost elastic transferences are registered from producer to consumer inflations are registered for both periods, i.e., 1.05 and 1.07¹².

The results reported on tables 2 and 3 do not comply with the hypothesis regarding flexible prices. Flexible prices imply that consumer and producer prices should have a unitary value at least in the long term. In contrast, the estimators reported on these tables provide insight of the presence of sticky prices in the short and long terms. In the short term the effect of wages and the bilateral exchange rate are close to nil for both periods. These results point out to a relatively weak role of wages in consumer and producer inflations. Pujol and Griffiths (1998) reach similar results in the short term where wage estimators are 0.06 and 0.20 with respect to producer and consumer inflations, respectively. According with Gil Díaz and Ramos Tercero (1992), who examine the Mexican manufacturing sector wages are not inflationary. These authors even report negative elasticities from wages growth rate (-1.924 for 1976:09-1982:01 and -1.762 for 1982:01-1987:03), while resorting to some key inflationary prices¹³. In the case of the Euro Area, the United Kingdom, Australia, and Canada, Cantore, et al., (2021) mention that the relationship between the markup and the labor share, breaking down into a variety of models, which introduce aspects such as different production functions, fixed costs, labor market frictions, do not respond in the way models predict.

In the short term, it seems that import prices are sticky. The bilateral nominal exchange rate estimators with respect to producer and consumer inflations have values close to zero. Also, Pujol and Griffiths (1998) report inelastic coefficients (0.06) from foreign inflation to local producer inflation. Gil Díaz and Ramos Tercero (1992) mention that the exchange rate elasticity with respect to key inflationary prices was -0.921 for the 1976-1982 period in Mexico. For these authors, this result seems to indicate that the exchange rate was used to stabilize the general price level. Burtein et al. (2005) report similar results for the U.S. economy.

The bilateral nominal exchange rate is negative in the long-term equation (6) and positive in the short-term equation (8), with respect to consumer inflation. This is in so far as these estimators are close to zero. During the period 2007-2016, associated with the Great Recession, the regulation of the bilateral

¹² The Breusch-Godfrey Serial Correction LM tests with two lags do not report serial correlation problems for equation (8) in the short term for the period 2007-2016. The same applies to equation (6) in the long term for the period 2007-2016.

¹³ These authors do not explain which variables were used in their estimations, neither provide a specific econometric model. Also, they do not report the usual regression statistics.

nominal exchange rate with two lags, contribute in the short term to a minimal increase in consumer inflation.

In the long term, the producer inflation estimators with respect to consumer inflation are 1.05 and 1.07 for each period, respectively. These values imply almost flexible prices for both periods^{14, 15}. In the short term, the producer price inflation estimator with respect to consumer inflation are 0.80 and 0.25 for each period, respectively. Thus, producer prices are positively transferred into consumer prices, although not completely.

The long-term equation (5) and (6) do not need any lag. In the short-term equation (7) and (8) required lags: equation (7) for wages (3 lags for the period 2007-2016) and the bilateral exchange rate (1 lag for the period 1994-2013); equation (8) for wages (3 lags for the period 2007-2016) and the bilateral exchange rate (2 lags for the periods 1994-2003 and 2007-2016). Besides, equations (7) and (8) include the error correction terms with a statutory one lag¹⁶.

Table 4
Error correction terms. Phillips-Perron (PP) and Augmented Dickey-Fuller (ADF) unit root tests.
Selected periods, monthly frequency

data id	period	integration order	significance	PP, ADF critical values	PP Adj. t-stat.	ADF t-stat.	option
ecm ₅	1994-200	I(0)	1% level	-3.49	-7.33	-2.98	A
				-2.88	-7.40	-1.82	B
				-2.58	-7.36	-2.99	C
ecm ₆	1994-2003**	I(0)	1% level	-3.49	-7.10	-3.42	A
				-2.88	-7.26	-3.65	B
				-2.58	-7.13	-3.44	C
ecm ₅	2007-2016**	I(0)	1% level	-3.48	-5.12	-2.61	A
				-2.88	-6.19	-2.63	B
				-2.58	-5.15	-2.62	C
ecm ₆	2007-2016*	I(0)	1% level	-3.48	-3.48	-2.80	A
				-2.88	-2.88	-2.79	B
				-2.58	-2.58	-2.82	C

Note: Bandwidth Newey-West automatic selection using Bartlett kernel. *Bandwidth Newey-West 12 user-specified using Bartlett kernel; ** user specified lag length 2 (fixed). Included in test equation: A constant; B constant, linear trend; C none. Mackinnon (1996) one-sided p-values for rejecting the null hypothesis of having a unit root. All test results are reported at the 99% of statistical significance. Source: residuals from the long term estimated equations for the periods 1994-2003 and 2007-2016, using E-Views 9.0.

¹⁴ This synchronization, between these two indicators are shown in panel a.

¹⁵ Coibion and Gorodnichenko (2013) mention an absence of a significant disinflation processes during the Great Recession of 2007-2009. This outcome continues to be a key puzzle for New Keynesian models.

¹⁶ Independent data contain seasonal components, which are difficult to systematize by their own nature. Independent data lags are an attempt to model seasonal components. There is not a unique criterion for independent data lag selection.

The results reported on table 4 indicates that the error correction terms ϵm_5 and ϵm_6 are stationary in levels, for the periods 1994-2003 and 2007-2016. The results indicate that ϵm_5 and ϵm_6 are cointegrating vectors. This result demonstrates a long-term equilibrium in equations (5) and (6), when the constant, the constant and linear trend and none tests options are considered. Thus, in the long-term equations (5) and (6) are cointegrated (Johansen (1988, 1992, 2004), and Engle and Granger (1987)). There is no need for running additional cointegration tests to prove that equations (5) and (6) are cointegrated.

The error term unit root tests indicate that ϵm_5 and ϵm_6 are stationary or integrated of degree zero. Therefore, they can be used with one lag in the short-term error correction equations. According with the results on table 4, it seems fair to argue that manufacturing producer prices, consumer prices, imported prices, and wages have common trends. This is because, these data have in common long term equilibrium information and/or share a true economic relationship (Sargan, 1964 and 1984).

Table 5
Pairwise Granger causality tests. Selected periods, monthly frequency

1994-2013			
Null hypothesis	n	F-Statistic	Probability
Long-term			
w does not Granger cause ppi	108	7.92760	0.0006
ppi does not Granger cause w		8.71174	0.0003
e_0 does not Granger cause ppi	108	67.0974	0.0000
ppi does not Granger cause e_0		0.34412	0.7097
w does not Granger cause cpi	108	7.92760	0.0006
cpi does not Granger cause w		8.71174	0.0003
ppi does not Granger cause cpi	108	1.13419	0.3257
cpi does not Granger cause ppi		2.86708	0.0614
e_0 does not Granger cause cpi	108	32.4225	0.0000
cpi does not Granger cause e_0		0.27402	0.7609

Continuous Table 5 ...

Short-term			
Null hypothesis	n	F-Statistic	Probability
w does not Granger cause ppi	107	7.61008	0.0008
ppi does not Granger cause w		0.28056	0.7559
e ₀ does not Granger cause ppi	106	4.23847	0.0171
ppi does not Granger cause e ₀		1.93156	0.1502
w does not Granger cause cpi	107	7.39791	0.0010
cpi does not Granger cause w		0.29157	0.7477
ppi does not Granger cause cpi	107	4.80739	0.0101
cpi does not Granger cause ppi		3.80633	0.0255
e ₀ does not Granger cause cpi	105	16.5496	0.0000
cpi does not Granger cause e ₀		34.8010	0.0000
2007-2016			
Null hypothesis	n	F-Statistic	Probability
Long-term			
w does not Granger cause ppi	112	2.67438	0.0000
ppi does not Granger cause w		27.6836	0.0000
e ₀ does not Granger cause ppi	112	19.6372	0.0000
ppi does not Granger cause e ₀		2.34696	0.1006
w does not Granger cause cpi	112	0.45398	0.0000
cpi does not Granger cause w		48.3725	0.0003
ipp does not Granger cause cpi	112	2.78217	0.0664
cpi does not Granger cause ipp		0.94572	0.3916
e ₀ does not Granger cause cpi	112	4.79279	0.0102
cpi does not Granger cause e ₀		1.97305	0.1441

Continuous Table 5 ...

		Short-term	
w does not Granger cause ppi	107	7.61008	0.0008
ppi does not Granger cause w		0.28056	0.7559
e_0 does not Granger cause ppi	106	4.23847	0.0171
ppi does not Granger cause e_0		1.93156	0.1502
w does not Granger cause cpi	107	7.39791	0.0010
cpi does not Granger cause w		0.29157	0.7477
ppi does not Granger cause cpi	107	4.80739	0.0101
cpi does not Granger cause ppi		3.80633	0.0255
e_0 does not Granger cause cpi	105	16.5496	0.0000
cpi does not Granger cause e_0		34.8010	0.0000

Note: the number of lags is two, n represents the number of observations.

Source: own estimation using E-Views 9.0.

Regarding table 5 results, for the period 1994-2013 it cannot be rejected that wages do not Granger cause the producer and consumer price indexes, with short term probabilities of 0.0008 and 0.0010, respectively. Similar results are observed in the short term for the period 2007-2016, with respect to wages and producer and consumer price indexes: 0.0008 and 0.0010, respectively. In the short term, it cannot be rejected that the bilateral exchange rate does not Granger cause the producer price index, with probability of 0.0171 for both periods; likewise for the consumer price index: 0.0000 for both periods.

In the short term, it cannot be rejected that producer price index does not Granger cause the consumer price index, with probabilities of 0.0101 for both periods. In the long term, it cannot be rejected that the bilateral exchange rate does not Granger cause the producer and consumer price index with probabilities close to 0.0000 for both periods. In the short term, it appears that Granger causality runs one-way from wages to price indexes and not the other way. Likewise for the bilateral exchange rate and the producer and consumer price indexes; and for the producer price index and the consumer price index. In the long term, it appears that Granger causality runs one-way from the bilateral exchange rate to the producer and consumer price indexes. The pairwise Granger causality test results seems to sustain those equations (5), (6), (7), and (8) are well specified. Granger tests have not provided empirical evidence of a strong statistical causality from wage growth to inflation. Similar results have been reported by Hess and Schweitzer (2000); Hogan (1998); Rissman (1995); Clark (1997) and Mehra (1993) in the United States context.

CONCLUSIONS

An error correction model in the long and short term was proposed for Mexican manufacturing, for two sets of periods: 1994-2003 and 2007-2016. Wages have an almost nil effect in manufacturing producer and consumer prices, in the long and short terms during the periods under study. The pairwise Granger causality tests have not provided empirical evidence of a strong statistical causality from wage growth to inflation

tests, and signal that the error correction equations (5), (6), (7) and (8) are well specified. Together, these results are at odds with the mark-up price function traditional theoretical tenets. This body predicates upon wage increases as a source of inflation.

It appears that there are sticky import prices in the long and short terms. In the short term, the bilateral nominal exchange rate estimators respect to producer and consumer inflation are close to zero. These inflations seem unaffected by bilateral nominal exchange rate regulations. The bilateral nominal exchange rate changes from negative (equation 6) to positive (equation 8) signs, with respect to consumer inflation. This last point is a matter for further analysis.

The manufacturing producer inflation estimators, with respect to consumer prices are almost elastic in the long term. They exhibit almost unitary values in the long term for both periods. Hence, producer price index increases are almost totally transferred to consumer prices. These results suggest that there are flexible prices from the manufacturing producer to the consumer. However, in the short-term producer prices are not transferred with a unitary elasticity into consumer prices.

The long and short terms estimation results provide insight of the presence of sticky prices regarding wages. These results point out to a relatively weak role of wages in consumer and producer inflations. Thus, it seems statistically fair to infer those wages are not inflationary in Mexican manufacturing, for the periods under analysis. In this case, policies targeting wage inflation controls seem inefficient in controlling producer and consumer price inflations. As a result, policies that seek inflation control could leave wage inflation controls aside.

REFERENCES

- Ball, L., and Mankiw, N.G. (1995). Relative-Price Changes as Aggregate Supply Shocks. *Quarterly Journal of Economics*, Vol. 110 (1), pp. 162-193. <https://doi.org/10.2307/2118514>
- Banco de México. (2021). Series históricas. Retrieved at <http://www.banxico.org.mx>
- Blanchard, O. (1993). *Macroeconomics*, New York: McGraw-Hill.
- Cantore, C., León-Ledesma, M., and Ferroni, F. (2021). The Missing Link: Monetary Policy and the Labor Share. *Journal of the European Economic Association*, Vol. 19 (3), pp. 1592-1620. <https://doi.org/10.1093/jeea/jvaa034>
- Carbajal-De-Nova, C. (2003). Salarios e Inflación. El Caso de la Manufactura en México, Master thesis. Available at: <http://148.206.53.84/tesiuami/UAMI10798.pdf> [Retrieved in August, 2018].
- Carbajal-De-Nova, C. (2018). Money Neutrality: An Empirical Assessment for Mexico. Working paper. <http://doi.org/10.13140/RG.2.2.36446.69440>.
- Chow, G.C. (1960). Test of Equality between Sets of Coefficients in Two Linear Equations. *Econometrica*, Vol. 28, No. 3, pp. 591-605. <https://doi.org/10.2307/1910133>.
- Christiano, L.J., Eichenbaum, M., and Evans, C.L. (2005). Nominal Rigidities and the Dynamic Effects of a Shock to Monetary Policy. *Journal of Political Economy*, Vol. 113, No. 1, pp. 1-45. <https://doi.org/10.1086/426038>

- Clark, T.E. (1997). Do Producer Prices Help Predict Consumer Prices? *Federal Reserve Bank of Kansas City Research Paper*, Vol. 80 (QIII), pp. 25-39.
- Coibion, O., and Gorodnichenko, Y. (2013). Is the Phillips Curve Alive and Well after All? Inflation Expectations and the Missing Disinflation. *NBER Working Paper Series*, (19598), pp. 1-43. <https://doi.org/10.3386/w19598>
- Desai, M. (1975). The Phillips Curve: A Revisionist Interpretation. *Economica*, Vol. 42, no. 165, pp. 1-19. <https://doi.org/10.2307/2552982>
- Dicks-Mireaux L.A., and Dow J.C.R. (1959). The Determinants of Wage Inflation; United Kingdom 1946-1956. *Journal of the Royal Statistical Society, Series A*, Vol. 122, no. 2, 145-184. <https://doi.org/10.2307/2342602>
- Douc, R., Moulines, F., and Stoffer, D. (2014). *Nonlinear Time Series: Theory, Methods and Applications with R Examples*, Boca Raton: CRC Press. <https://doi.org/10.1007/s11222-015-9575-4>
- Engle, R.F., and Granger, C.W. (1987). Co-Integration and Error Correction: Representation, Estimation, and Testing. *Econometrica*, Vol. 55, No. 2, pp. 251-276. <https://doi.org/10.2307/1913236>
- Féve, P., and J.G. Sahuc. (2017). In Search of the Transmission Mechanism of Fiscal Policy in the Euro Area. *Journal of Applied Econometrics*, Vol. 32 (3), pp. 704-718. <https://doi.org/10.1002/jae.2517>
- Friedman, M. (1956). The Quantity Theory of Money – A Restatement. (In M. Friedman, ed.) *Studies in the Quantity Theory of Money*, Chicago: University of Chicago Press. https://doi.org/10.1007/978-1-349-19804-7_1
- Galí, J., and Gertler, M. (1999). Inflation Dynamics: A Structural Econometric Analysis. *Journal of Monetary Economics*, Vol. 44 (2), pp. 195-222. [https://doi.org/10.1016/s0304-3932\(99\)00023-9](https://doi.org/10.1016/s0304-3932(99)00023-9)
- Galí, J., Gertler, M. and J.D. López-Salido. (2007). Markups, Gaps, and the Welfare Costs of Business Fluctuations. *Review of Economics and Statistics*, 89(1), pp. 44-59. <https://doi.org/10.1162/rest.89.1.44>
- Galí, J. (2008). *Monetary Policy, Inflation and the Business Cycle: An Introduction to the New Keynesian Framework*, New Haven: Princeton University Press. <https://doi.org/10.1007/s00712-008-0040-0>
- Gil-Díaz, F., and Ramos-Tercero, R. (1992). Lecciones desde México (in M. Bruno, Di Tella, Dornbusch R. and S. Fisher, eds.) *inflación y estabilización. La Experiencia de Israel, Argentina, Brasil, Bolivia y México*. México: Fondo de Cultura Económica.
- Hall, R., and Taylor, M. (1989). *Macroeconomía*. México: Iberoamericana.
- Hess, G., and Schweitzer, M. (2000). Does Wage Inflation Cause Price Inflation? *Federal Reserve Bank of Cleveland Policy Discussion Paper*, No. 10. <https://doi.org/10.2139/ssrn.1025464>
- Hendry, D.F., and Wallis, K.F. (1984). *Econometrics and Quantitative Economics*, New York: Basil Blackwell.
- Henry, S.G.B., and Ormerod, P.A. (1978). Incomes Policy and Wage Inflation: Empirical Evidence for the UK 1961-1977. *National Institute Economic Review*, Vol. 85, pp. 31-39. <https://doi.org/10.1177/002795017808500106>
- Hickman, B.G., and Klein, L.R. (1984). Wage-Price Behavior in the National Models of Project LINK. *The American Economic Review*, Vol. 74, No. 2, pp. 150-154.
- Hogan, V. (1998), Explaining the Recent Behavior of Inflation and Unemployment in the United States. *IMF Working Paper*, 98/145, pp. 1-17. <https://doi.org/10.5089/9781451856514.001>
- Instituto Nacional de Estadística y Geografía (2021). Banco de información en línea. Retrieved at <http://www.inegi.org.mx/sistemas/bie/INEGI>
- Johansen, S. (1988). Statistical Analysis of Cointegration Vectors. *Journal of Economic Dynamics and Control*, Vol. 12(2-3), pp. 231-254. [https://doi.org/10.1016/0165-1889\(88\)90041-3](https://doi.org/10.1016/0165-1889(88)90041-3)

- Johansen, S. (1992). Cointegration in Partial Systems and the Efficiency of Single-Equation Analysis. *Journal of Econometrics*, Vol. 52 (3), pp. 389-402. [https://doi.org/10.1016/0304-4076\(92\)90019-N](https://doi.org/10.1016/0304-4076(92)90019-N)
- Johansen, S. (2004). Cointegration: An Overview. Department of Applied Mathematics and Statistics, University of Copenhagen. Available at: <http://web.math.ku.dk/~susanne/Klimamode/OverviewCointegration.pdf> [Retrieved in August, 2018].
- Klein, L.R., Ball, R.J., Hazlewood, A., and Vandome P. (1961). *An Econometric Model of the United Kingdom*, Oxford: Basil Blackwell.
- Lipsey, R.G., and Steuer M.D. (1961). Relations between Profits and Wage Rates, *Economica*, Vol. 28 (110), pp. 137-155. <https://doi.org/10.2307/2551519>.
- Lucas, J.R.E. (1972). Expectations and the Neutrality of Money. *Journal of Economic Theory*, Vol. 4(2), pp. 103-124. [https://doi.org/10.1016/0022-0531\(72\)90142-1](https://doi.org/10.1016/0022-0531(72)90142-1).
- Lucas, J.R.E. (1996). Nobel Lecture: Monetary Neutrality. *Journal of Political Economy*, Vol. 104 (4), pp. 661-682. <https://doi.org/10.1086/262037>
- Mankiw, N.G. (2015). *Principles of Economics*, Kuala Lumpur: Cengage Learning.
- Mehra, Y. (1993). Unit Labor Costs and the Price Level. *Federal Reserve Bank of Richmond Economic Quarterly*, Vol.79 (4), pp. 35-51.
- Melnick, R., and Strohsal, T. (2017). Disinflation in Steps and the Phillips Curve: Israel 1986-2015. *Journal of Macroeconomics*, Vol. 53, Issue C, September, pp. 145-161. <https://doi.org/10.1016/j.jmacro.2017.06.008>
- Merton, H.M., and Upton, C.W. (1986). *Macroeconomics: A Neoclassical Introduction*, Chicago: University of Chicago Press.
- Onaran, Ö., Stockhammer, E. and Grafl, L. (2011). Financialization, Income Distribution and Aggregate Demand. *Cambridge Journal of Economics*, 35 (4), pp. 637-661. <https://doi.org/10.1093/cje/beq045>
- Onaran, Ö., and Galanis, G. (2014). Income Distribution and Growth: A Global Model. *Environment and Planning A: Economy and Space*, Vol. 46 (10), pp. 2489-2513. <https://doi.org/10.1068/a46265>
- Onaran, Ö., and Obst, T. (2015). Wage-led Growth in the EU15 Member States: The Effects of Income Distribution on Growth, Investment, Trade Balance, and Inflation. *Greenwich Papers in Political Economy, GPERC28*, pp. 1-50. <https://doi.org/10.1093/cje/bew009>
- Phillips, A.W. (1958). The Relation between Unemployment and the Rate of Change of Money Wage Rates in the United Kingdom, 1861-1957. *Economica*, Vol. 25 (100), 283-300. <https://doi.org/10.1111/j.1468-0335.1958.tb00003.x>
- Pujol, T., and Griffiths, M. (1997). Moderate Inflation in Poland: A Real Story. (In C. Cottarelli and G. Szapáry eds.) *Moderate Inflation. The Experience of Transition Economies*, Washington D.C: International Monetary Fund. <https://doi.org/10.1006/jcec.1999.1591>
- Rissman, E. (1995). Sectoral Wage Growth and Inflation. *Federal Reserve Bank of Chicago Economic Perspectives*. Vol. 19, No. 4, pp. 16-28.
- Romer, D. (1996). *Advanced Macroeconomics*, Nueva York: McGraw-Hill.
- Rotemberg, J. (1987). The New Keynesian Microfoundations. In S. Fischer ed., *NBER Macroeconomics Annual 1987*, Vol. 2 Cambridge, Massachusetts: The MIT Press. <https://doi.org/10.1086/ma.2.4623707>
- Samuelson, P. (1994). Facets of Balassa-Samuelson Thirty Years Later. *Journal of International Economics*, Vol. 2 (3), pp. 201-226. <https://doi.org/10.1111/j.1467-9396.1994.tb00041.x>
- Sargan, J.D. (1964). Wages and Prices in the United Kingdom: A Study in Econometric Methodology. (In P.E. Hart, G. Mills and J.K. Whittaker, eds.) *Econometric Analysis for National Economic Planning*, London: Butterworth.

-
- Sargan, J.D. (1984). Published works of J.D. Sargan. (In David F. Hendry and Kenneth F. Wallis, eds.) *Econometrics and Quantitative Economics*, New York: Blackwell.
- Spanos, A. (1995). On Theory Testing in Econometrics: Modeling with Non-experimental Data. *Journal of Econometrics*, Vol. 67 (1), pp. 189-226. [https://doi.org/10.1016/0304-4076\(94\)01633-B](https://doi.org/10.1016/0304-4076(94)01633-B)
- Stigler, G.J. (1966). *The Theory of Price*, New York: Macmillan.
- Stockhammer, E., Onaran, Ö., and Ederer, S. (2009). Functional Income Distribution and Aggregate Demand in the Euro Area. *Cambridge Journal of Economics*, Vol. 33(1), pp. 139-159. <https://doi.org/10.1093/cje/ben026>
- Uhlig, H. (2005). What are the Effects of Monetary Policy on Output? Results from an Agnostic Identification Procedure. *Journal of Monetary Economics*, 52, pp. 381-419. <https://doi.org/10.1016/j.jmoneco.2004.05.007>
- Varian, H.R. (1999). *Intermediate Microeconomics. A Modern Approach*, New York: Norton.
- Wallis, K.F. (1979). Econometric Implications of the Rational Expectations Hypothesis. *Econometrica*, Vol. 48 (1), pp. 40-73. <https://doi.org/10.2307/1912018>
- Woodford, M. (2003). *Interest and Prices: Foundations of a Theory of Monetary Policy*, Princeton, Oxford and Beijing: Princeton University Press.

APPENDIX I. DATA SOURCES AND UNITS

Table A1
Data sources and units. Monthly frequency

Data ID	Description	Time period availability	Source	Units
w	nominal average production wages per person for the whole manufacturing sector	1994-2003 2007-2016	A B	thousands of Mexican pesos divided by the number of production workers
ppi	manufacturing producer price index	1985-2019	C	2012=100
cpi	consumer price index	1969-2018	D	2010=100
e ₀	bilateral nominal exchange rate between Mexico and the United States	1968	E	pesos per dollar

Source

A <http://www.inegi.org.mx/sistemas/bie/INEGI>. Series que ya no se actualizan > Sector manufacturero > Encuesta industrial mensual (CMAP) > Cifras absolutas > 205 clases de actividad económica > Remuneraciones > Salarios Total de la encuesta

B <http://www.inegi.org.mx/sistemas/bie/INEGI>. Series que ya no se actualizan > Sector manufacturero > Encuesta industrial mensual (CMAP) > Cifras absolutas > 205 clases de actividad económica > Personal ocupado > Obreros

C <http://www.inegi.org.mx/sistemas/bie/INEGI>. Series que ya no se actualizan > Sector manufacturero > Encuesta mensual de la industria manufacturera (EMIM), 2007-2019. Base 2008 > Remuneraciones totales pagadas > Salarios Total de la industria manufacturera r2 / p2 /

D <http://www.inegi.org.mx/sistemas/bie/INEGI>. Series que ya no se actualizan > Sector manufacturero > Encuesta mensual de la industria manufacturera (EMIM), 2007-2019. Base 2008 > Total de personal ocupado > Obreros Total de la industria manufacturera r1 / p1 /

E <http://www.inegi.org.mx/sistemas/bie/INEGI>. Series que ya no se actualizan > Precios e inflación > Índice nacional de precios productor. Base junio 2012=100 (clasificador SCIAN 2007, Información de coyuntura) > INPP excluyendo petróleo por sector de actividad económica de origen > Servicios > Índice 31-33 Industrias manufactureras

F <http://www.inegi.org.mx/sistemas/bie/INEGI>. Series que ya no se actualizan > Precios e inflación > Índice nacional de precios al consumidor. Base segunda quincena de diciembre 2010=100 > Mensual > Índice

G <http://www.banxico.org.mx>. Tipo de cambio pesos por dólar E.U.A., para solventar obligaciones denominadas en moneda extranjera, fecha de liquidación cotizaciones al final