

Mesocarnivores activity patterns in the Northern Colombian Andes

JUANITA BARRERA-VARGAS¹, CARLOS A. DELGADO-V¹, AND ANDRÉS ARIAS-ALZATE^{1,2*}

¹ Facultad de Ciencias y Biotecnología, Universidad CES. Calle 10A número 22-04, C. P. 050021. Medellín, Colombia. Email: bar-rera.juanita@uces.edu.co (JB-V), cdelgado@ces.edu.co (CAD-V), aarias@ces.edu.co (AA-A).

² IUCN/SSC Small Carnivore Specialist Group.

*Corresponding author: <https://orcid.org/0000-0001-9139-5690>

Temporal segregation plays an important role as a coexistence mechanism between potentially competing and closely related species, especially in species with similar morphology and ecological requirements, such as mesocarnivores. This study investigates the temporal niche ecology of mesocarnivores coexisting in the southeastern Aburrá Valley, northern Colombian Andes. Specifically, this study i) evaluated the daily activity patterns of six mesocarnivore species, ii) analyzed the influence of the lunar cycle on the activity patterns of nocturnal species, iii) estimated the temporal overlap between pairs of mesocarnivores, and iv) estimated the functional similarities of these species. We hypothesized that mesocarnivores with similar functional traits exhibit greater temporal niche segregation, thus showing low overlap in their activity patterns to reduce competition. We used data from tracking cameras (10,744 camera-days) and estimated daily activity patterns using Kernel density analysis, non-negative trigonometric summation, and overlap analysis with the *Overlap* package in R. Also, lunar influence was evaluated using circular statistics in the software Oriana 4.02. Functional similarity was analyzed by similarity clustering using Jaccard's index in PAST. Nine species were recorded; six were included in the analyses of daily activity patterns. Activity patterns were not uniform throughout the circadian cycle. *Cerdocyon thous*, *Leopardus tigrinus*, and *Nasuella olivacea* showed mainly nocturnal activity, while *Eira barbara*, *Nasua nasua*, and *Neogale frenata* displayed a diurnal activity pattern. Only *Leopardus tigrinus* showed significant activity related to the lunar cycle. The activity overlap between pairs of species was variable, with a tendency to a low overlap, showing a high ecological similarity between species. This study represents the first estimate of the activity patterns of mesocarnivore species in the southeastern Aburrá Valley. The observed activity patterns are similar to those reported in other works. Species with high overlap showed ecological differences, especially in size and diet. The low number of records for some species may be associated with poor detectability but also with low abundance as a result of urban development and anthropogenic disturbance (e. g., roadkills). Our results suggest that temporal segregation contributes to mediating intra-gremial interactions and coexistence between sympatric and potentially competing species. These results will hopefully contribute to the knowledge of the ecology of mesocarnivores, mainly in ecosystems surrounding large cities in the northern Andes.

La segregación temporal juega un papel importante como mecanismo de coexistencia entre especies potencialmente competidoras y cercanamente emparentadas, especialmente en especies con morfología y requerimientos ecológicos similares como los mesocarnívoros. Aquí, investigamos la ecología del nicho temporal de los mesocarnívoros que coexisten en simpatria al norte de los Andes colombianos, al suroriente del Valle de Aburrá. Específicamente, i) evaluamos los patrones de actividad diaria de seis especies, ii) analizamos la influencia del ciclo lunar en los patrones de actividad diaria de especies nocturnas, iii) estimamos la sobreposición temporal entre pares de mesocarnívoros y iv) estimamos la similitud funcional de estas especies. Hipotetizamos que los mesocarnívoros con rasgos funcionales similares exhiben mayor segregación en el nicho temporal y, por tanto, muestran un bajo sobreposición en sus patrones de actividad para así reducir la competencia. Utilizamos datos obtenidos de cámaras de rastreo (10,744 días-cámara) y realizamos estimaciones de los patrones de actividad diaria por medio de análisis de densidad de Kernel, suma trigonométrica no negativa y análisis de sobreposición con el paquete *Overlap* en el programa R. Asimismo, se evaluó la influencia lunar mediante el uso de estadística circular en el software Oriana 4.02. La similitud funcional se analizó por medio de un conglomerado de similitud, utilizando el índice de Jaccard en el programa PAST. Se registraron nueve especies, seis se incluyeron en los análisis de los patrones de actividad. Los patrones de actividad no fueron uniformes a lo largo del ciclo circadiano. *Cerdocyon thous*, *Leopardus tigrinus* y *Nasuella olivacea* mostraron una actividad principalmente nocturna, mientras *Eira barbara*, *Nasua nasua* y *Neogale frenata* presentaron un patrón de actividad diurno (Figura 2). Únicamente *Leopardus tigrinus* muestra una actividad significativa respecto al ciclo lunar. La sobreposición en la actividad entre pares de especies fue variable, con una tendencia a una sobreposición baja, mostrando una alta similitud ecológica entre especies. Este estudio constituye la primera estimación de los patrones de actividad de las especies de mesocarnívoros del suroriente del Valle de Aburrá. Los patrones de actividad observados son similares a los reportados en otros trabajos. Las especies que mostraron una sobreposición alta, muestran diferencias ecológicas, especialmente en el tamaño y la dieta. El bajo número de registros que se obtuvieron para algunas especies podría estar asociado a una baja detectabilidad, pero también a una baja abundancia como resultado del efecto del desarrollo y la perturbación antrópica (e. g., atropellamientos). Nuestros resultados sugieren que la segregación temporal contribuye a mediar las interacciones intragremiales y la coexistencia entre especies simpátricas y potencialmente competidoras. Esperamos que estos resultados contribuyan al conocimiento sobre la ecología de los mesocarnívoros, principalmente en ecosistemas circundantes a las grandes ciudades al norte de los Andes.

Keywords: Camera trap; ecological traits; non-invasive methods; temporal interactions; temporal segregation.

Introduction

The coexistence of potentially competing species is one of the central topics in ecology and biogeography. It plays a major role in the dynamics of species populations, can profoundly influence the evolution of the ecological traits of interacting species as well as the evolution of species, and also influences underlying ecosystem processes (Broenimann *et al.* 2012; Penteriani *et al.* 2013; Nagy-Reis *et al.* 2019; Marinho *et al.* 2020; Segar *et al.* 2020). For instance, in a community in which closely related species coexist, allopatric mechanisms and some forms of interference (e. g., intraguild predation) are ecological forces with highly relevant implications in structuring communities, with potential effects on the ecology and evolution of the species involved (Rosenzweig 1966; Holt and Polis 1997; Palomares and Caro 1999; de Oliveira and Pereira 2014; Donadio and Buskirk 2006; Hunter and Caro 2008; Arias-Alzate *et al.* 2022). However, other mechanisms that facilitate the coexistence of potentially competing species remain poorly understood (Godsoe *et al.* 2015; Arias-Alzate *et al.* 2022).

It could be expected that, at the assemblages level (within the same geographic space), from the competitive exclusion standpoint, the species could coexist if they have distinctive morphological and behavioral adaptations, such as differences in size and diet, changes in habitat use or segregation at spatial or temporal levels (*i. e.*, character segregation or niche differentiation; Case and Gilpin 1974; Schoener 1974a; Chesson and Grubb 1990; Hutchinson 1978; Hunter and Caro 2008; Penido *et al.* 2017; Porto *et al.* 2021; Arias-Alzate *et al.* 2022). This aspect is an essential part of the ecology of organisms since it provides key information; for example, the use of time directly influences how species interact with the environment, maximize the search for food, seek mating, avoid the risk of predation, and how they continuously cope with the regular changes in the ecosystem (Schoener 1974b; Kronfeld-Schor and Dayan 2003; Laundre *et al.* 2010; Pratas-Santiago *et al.* 2016; Karanth *et al.* 2017; Penido *et al.* 2017; Marinho *et al.* 2020; Vilella *et al.* 2020; Peral *et al.* 2022). Consequently, the daily activity pattern reflects the evolutionary and physiological adaptations that allow species to increase their adequacy while facilitating coexistence (Schoener 1974b; Laundre *et al.* 2010; Tambling *et al.* 2015; Pratas-Santiago *et al.* 2016).

The order Carnivora is one of the most important groups in ecological dynamics. They play a central role in ecosystems through a top-down effect that regulates the populations of their prey, either directly by predation or because of the fear they can produce in the ecosystem (*i. e.*, landscapes of fear; Treves and Karanth 2003; Roemer *et al.* 2009). However, it is one of the most sensitive groups to environmental imbalance, generated mainly by an anthropic effect (Crooks 2002). This group includes a great diversity of species in terms of morphology and function; most are small to medium-sized species (*i.e.*, less than 15 kg), commonly known as mesocarnivores (Roemer *et al.* 2009; Bu *et al.* 2016; Easter *et al.* 2020; Marinho *et al.* 2020).

These species form a diverse group as regards their ecology and behavior; they can be solitary or highly social, with varied diets, and their trophic level is generally just below the top predators (Marinho *et al.* 2020). In general, it has been suggested that mesocarnivores are vitally important in ecosystem dynamics, facilitating nutrient flows between adjacent ecosystems and maintaining the populations of their potential prey in a state of equilibrium (Hunter and Caro 2008; Roemer *et al.* 2009; Penido *et al.* 2017; Marinho *et al.* 2020). In addition, unlike larger carnivores, these species can fulfill unique roles, such as direct or secondary seed dispersal (Hunter and Caro 2008; Roemer *et al.* 2009). Therefore, they play a major role in shaping ecological communities and, therefore, in local and regional ecosystem processes (Hunter and Caro 2008; Roemer *et al.* 2009). For these species, activity patterns may be partly determined by the climate, habitat structure and preference, and anthropogenic influences. On the other hand, these patterns are also driven by interspecific interactions, especially with larger dominant species, where the risk of predation plays a central role and can strongly influence the spatial distribution of resources and the foraging behavior of these species (Crooks and Soule 1999; Bu *et al.* 2016; Ramírez-Mejía and Sánchez 2016; Penido *et al.* 2017; Mpemba *et al.* 2019; Easter *et al.* 2020; Mendes *et al.* 2020). To this end, mesocarnivores must adjust their behaviors and activities in the face of the pressures exerted on these ecosystems while maximizing the search for food and reducing predation risks and antagonistic encounters with other species (Amarasekare 2002; Glen and Dickman 2005; Donadio and Buskirk 2006; Mpemba *et al.* 2019).

However, at a global level, many aspects of the natural history and ecology of mesocarnivores are still unknown, as they are one of the least studied groups about which there are huge gaps in information in the Neotropics (Andrade Ponce *et al.* 2016). For many of them, only their presence in certain regions is known (Andrade Ponce *et al.* 2016); however, little is known about how they interact with each other, their spatial or temporal patterns, and the segregation between them (Easter *et al.* 2020). For example, few studies have investigated the activity patterns of these species in Colombia (González-Maya *et al.* 2015; Cáceres-Martínez *et al.* 2016; Ramírez-Mejía and Sánchez 2016; García-R *et al.* 2019), with limited estimates in the Cordillera Central of Colombia (Delgado-V *et al.* 2011; Ramírez-Mejía and Sánchez 2016). In this region, there are still large information gaps about the ecological dynamics in the group, especially in relevant conservation areas. In the Aburrá Valley, 15 of the 34 carnivorous species registered for Colombia are currently recognized (Ramírez-Chaves *et al.* 2016; Arias-Alzate *et al.* 2021), accounting for 44.1 % of all species of the order Carnivora in Antioquia (Calle and Arango 2003). Among these species, mesocarnivores are one of the most affected groups in the region, mainly due to habitat fragmentation and roadkills (Delgado-V 2007; 2014; Arias-Alzate *et al.* 2015).

This work evaluated the daily activity patterns of mesocarnivore species in the southeast part of the Aburrá Valley (hereafter southeast Aburrá Valley) using non-invasive methods (*i. e.*, tracking cameras). Particularly, we addressed the following questions: What are the activity patterns of the mesocarnivore species inhabiting the southeast Aburrá Valley? What is the degree of segregation in the temporal niche between these species? How does the lunar cycle influence these activity patterns? In functional terms, how similar are the mesocarnivore species living in the area? We hypothesized that mesocarnivores with similar functional characteristics exhibit greater temporal niche segregation, showing a low overlap in their activity patterns to reduce competition. A deeper knowledge of these ecological and natural history aspects of mesocarnivores will support better management and conservation strategies for these ecosystems immersed in landscapes where anthropic activity and urbanization are growing phenomena.

Materials and methods

Study Area. The study was conducted between the San Nicolás Valley and the southeast Aburrá Valley in the south-central department of Antioquia, north of the Central Cordillera of the Colombian Andes. This area harbors an ecosystem of cloud mountain forest or high Andean forest, corresponding to the Tropical Montane Humid Forest life

zone (bmh-M, sensu [Holdridge 1947](#)). The area comprises mature secondary forests with tree ferns (*Cythea arborea*) and *Chusquea* spp. It stretches across an altitudinal range between 2,100 and 3,050 masl, with a mean annual temperature of 22 °C and precipitation between 1,400 and 3,000 mm ([Hermelin 2007](#)). The study area mainly included the municipalities of Envigado and its boundaries with the municipalities of Sabaneta, Caldas, Medellín, and El Retiro (Figure 1).

Sampling Design. Sampling records were obtained by installing tracking cameras (Bushnell Agressor Red-glow and Bushnell Trophy Cam Essential) in forest areas across the study area. For camera installation, the study area was divided into 1 km x 1 km (1 km²) quadrants, of which 30 sampling quadrants were selected randomly using the Repeating Shapes and Sampling Tools for ArcGIS 10.5 ([ESRI 2018](#)). At least 20 of these stations were sampled simultaneously with one camera per station, as follows: Twenty cameras were used from October to December 2015, 28 from August to November 2016, 20 from July to October 2017, seven from January to February 2018, 20 from April to August 2018, and six from December 2019 to December 2020. These monitoring stations were separated from one another by a minimum average distance of 850 m \pm 630 m (Figure 1). Each monitoring station operated over a continuous 24-hour sampling period. For installing these

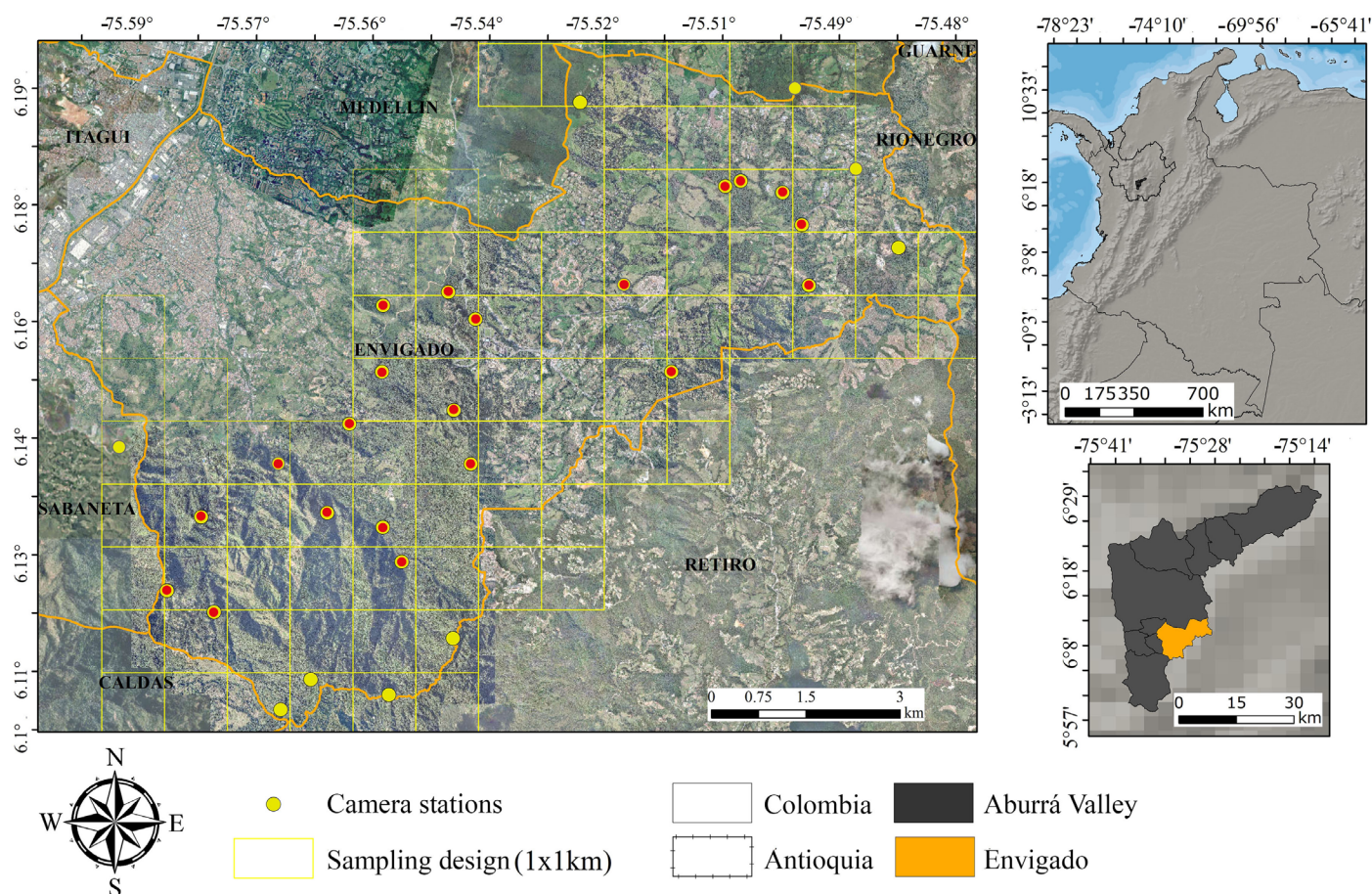


Figure 1. Sampling design for the tracking camera's locations in the study area. A central red dot marks the same stations sampled between 2015 and 2018.

cameras, we searched tracks or signs of the passage of species through existing trails or paths, which are frequently used by wildlife (especially felines, procyonids, and canids), to maximize the probability of capturing species (Navarro-Pelaez *et al.* 2021; Chávez *et al.* 2013; Marinho *et al.* 2018a). The cameras were set in video mode and affixed approximately 20 cm to 30 cm above the ground, with a slight downward-facing inclination and with the following settings: high HD-resolution videos, infrared auto-sensor for day and night, a 40-second video per event, and a 5-minute interval between videos.

Activity Patterns, Lunar Phase, and Temporal Niche Overlap. First, with the circular statistics program Oriana version 4.02 (Kovach 2011), we performed the Rayleigh test (95 % confidence level) to assess whether the species exhibit a regular daily activity pattern over a 24-hour period (Kovach 2011). Afterward, the daily activity patterns of the species were estimated, and their degree of overlap (*i. e.*, temporal niche segregation) was assessed with the *Overlap* package (Ridout and Linkie 2009; Linkie and Ridout 2011; Meredith and Ridout 2018) in R (R Development Core Team 2013). Here, the probability density function of records was evaluated non-parametrically with the Kernel Density (DK) Estimation and the non-negative trigonometric sum (STN) distribution function. These distributions consider each record as a random sample of an underlying continuous distribution (Fernández-Durán 2004; Ridout and Linkie 2009), where individuals of any species have the same probability of being recorded at any time as long as they are active (Linkie and Ridout 2011; Pratas-Santiago *et al.* 2016). In this way, the bias of grouping the records in arbitrarily defined intervals is eliminated to determine the type of activity (Pratas-Santiago *et al.* 2016). To note, we did not consider a measure of independence between records since, according to De Solla *et al.* (1999), Blundell *et al.* (2001), and, recently, Peral *et al.* (2022), the independence assumption (*i. e.*, eliminating the autocorrelation) substantially limits and skews the results, as it does not reflect the continuous activity state. By contrast, considering all data maximizes the performance and accuracy of estimates, for example, in activity pattern analyses.

It is worth mentioning that the tropical zone near the equator is characterized by little variation in the time of sunrise and sunset throughout the year. This situation makes the clock time to approach the solar time (Rowcliffe *et al.* 2014). Therefore, the records obtained were standardized at solar time. Subsequently, these were converted to radians ($2\pi = 24$ hrs) before performing the analyses with the *Overlap* package and following the proposals of Ridout and Linkie (2009), Linkie and Ridout (2011), and Vilella *et al.* (2020). Consecutively in *Overlap*, also following the proposal of Ridout and Linkie (2009) and Linkie and Ridout (2011), the daily activity pattern was estimated by splitting the 24-hr period into 4-time intervals, as follows: 00:00-6:00; 6:00-12:00; 12:00-18:00 and 18:00-24:00. In addition, given the little variation between sunrise and sunset times, the sunrise

and sunset time are adjusted to $\pi/2$ and $3\pi/2$ (Ridout and Linkie 2009; Bu *et al.* 2016). This allows for classifying the cycle into daytime (the hours elapsed from sunrise to sunset) and nighttime periods (the remaining time), considering sunrise as 06:00 hrs and sunset as 18:00 hrs, respectively (Bu *et al.* 2016; Ridout and Linkie 2009, Meredith and Ridout 2018, Porfirio *et al.* 2016; Rowcliffe *et al.* 2014). Twilight can be considered as the time elapsed one hour before sunrise (*i. e.*, dawn) and one hour after sunset (*i. e.*, dusk; Porfirio *et al.* 2016), corresponding specifically to the astronomical twilight for the study area (<https://www.timeanddate.com/>).

In this way, it is possible to identify the activity of species according to record density (*e. g.*, Kernel density) identified at the time intervals, classified as diurnal (≥ 90 % of records during the day), nocturnal (≥ 90 % during the night), mainly diurnal (~ 70 % - 89 % during the day), and mainly nocturnal (70 % - 89 % during the night; Azevedo *et al.* 2018; Porfirio *et al.* 2016; Ridout and Linkie 2009). Each daily activity pattern by species was determined using a concentration parameter $K = 1.5$ for the DK function according to Meredith and Ridout (2018); for the STN function, it was identified based on the number of parameters according to the function implemented in *Overlap* (Ridout and Linkie 2009).

We calculated the overlap between pairs of species (*i. e.*, probability density functions sp. 1: $f(x)$ and sp. 2: $g(x)$) using the overlap coefficient Δ , which estimates the degree of overlap between distributions, *i. e.*, the magnitude of the difference between activity patterns (Linkie and Ridout 2011). This coefficient takes values between 0 (no overlap, *i. e.*, different) and 1 (full overlap, *i. e.*, identical; Ridout and Linkie 2009; Linkie and Ridout 2011). For the present analysis, 95 % confidence intervals were estimated through 1000 smoothed Bootstrap replicates, where values are taken from the estimated density function instead of using only those observed (Linkie and Ridout 2011; Meredith and Ridout 2018). For further mathematical and methodological details, please refer to Ridout and Linkie (2009) and Meredith and Ridout (2018). Last, we used the overlap coefficient Δ_1 for small samples (< 50 records) and Δ_4 for samples greater than 50 records (Ridout and Linkie 2009). To avoid subjective interpretations of the overlap in activity periods between species, we used the classification proposed by Monterroso *et al.* (2014): low overlap ($\Delta \leq 0.5$), moderate overlap ($0.5 < \Delta \leq 0.75$), and high overlap ($\Delta > 0.75$).

The effect of the lunar phase and light intensity on activity patterns was explored. To this end, the lunar phase was assigned to each species record that showed a mainly nocturnal activity pattern according to the abovementioned analyses. Subsequently, whether there is a uniform distribution related to the lunar phases was evaluated using the Rayleigh test (at a 95 % confidence level) in the circular statistics program Oriana version 4.02 (Kovach 2011). These data were treated as circular data (*i. e.*, scaled to radians) based on the date of each record. These dates are converted to angular data in Oriana by calculating the duration of the lunar month and the day of the lunar cycle according

to the time zone of the study area (*i. e.*, GMT-5), where, for example, day one represents the first day of the new moon with 0 % luminosity, so that zero corresponds to the new moon, $\pi/2$ to the first quarter, π to the full moon and $3\pi/2$ to the last quarter (Kovach 2011, Pratas-Santiago et al. 2016).

Functional Similarity Analysis. The similarity between the nine mesocarnivore species in the study area was evaluated using their ecological traits and constructing a binary database with the following structure: size, general activity pattern, trophic realm, trophic guild, habit, and social structure (Appendix 1). This information was obtained from previous works (Jones et al. 2009; Wilson and Mittermeier 2009; González-Maya et al. 2016, 2017; Arias-Alzate et al. 2020). These six ecological traits have been identified as major drivers in ecosystem functioning and as important predictors of the competitive capacity between species (de Oliveira and Pereira 2014; Fergnani and Ruggiero 2015; González-Maya et al. 2016; Arias-Alzate et al. 2020). Subsequently, the level of similarity between species was determined through a similarity cluster analysis using the Jaccard index. This index takes values between 0 and 1, where zero indicates a greater distance – and therefore a greater differentiation between the species – while values closer to one denote a smaller distance and, therefore, greater similarity. This analysis was performed in the statistical software PAST (Hammer et al. 2001).

Results

We obtained a total of 469 records belonging to nine mesocarnivore species with a sampling effort of 10,744 cameras/night (1,118 cameras/night in 2015; 2,852 in 2016, 1,394 in 2017, 1,099 in 2018, 2,211 in 2019, and 2,070 in 2020). Due to the low number of records obtained for three species ($n = 1$ for *Procyon cancrivorus*, $n = 2$ for *Puma yaguaroundi*, $n = 2$ and *Leopardus pardalis*, $n = 4$), these were excluded from the daily activity pattern analysis. Thus, a final total of 461 records were considered, corresponding to six species (Table 1). The species with the highest number of records was *Cercopithecus thous* ($n = 286$), followed by *Eira barbara* ($n = 76$). The species with the lowest number of records were *Nasua nasua* ($n = 21$) and *Neogale frenata* ($n = 21$; Table 1).

Activity Patterns, Temporal Niche Overlap and Lunar Phase. The activity patterns of the species were not uniform throughout the circadian cycle (Table 1). The crab-eating fox (*Cercopithecus thous*), the northern tiger cat (*Leopardus tigrinus*), and the western mountain coati (*Nasua olivacea*) show mainly nocturnal activity (Figure 2). The crab-eating fox had two peaks of main activity, before dawn at 06:00 hrs and after sunset at 18:00 hrs, with decreased activity near midnight and slight activity at noon (Figure 2). The northern tiger cat starts its activity after sunset, with a slight decrease toward midnight and increased activity

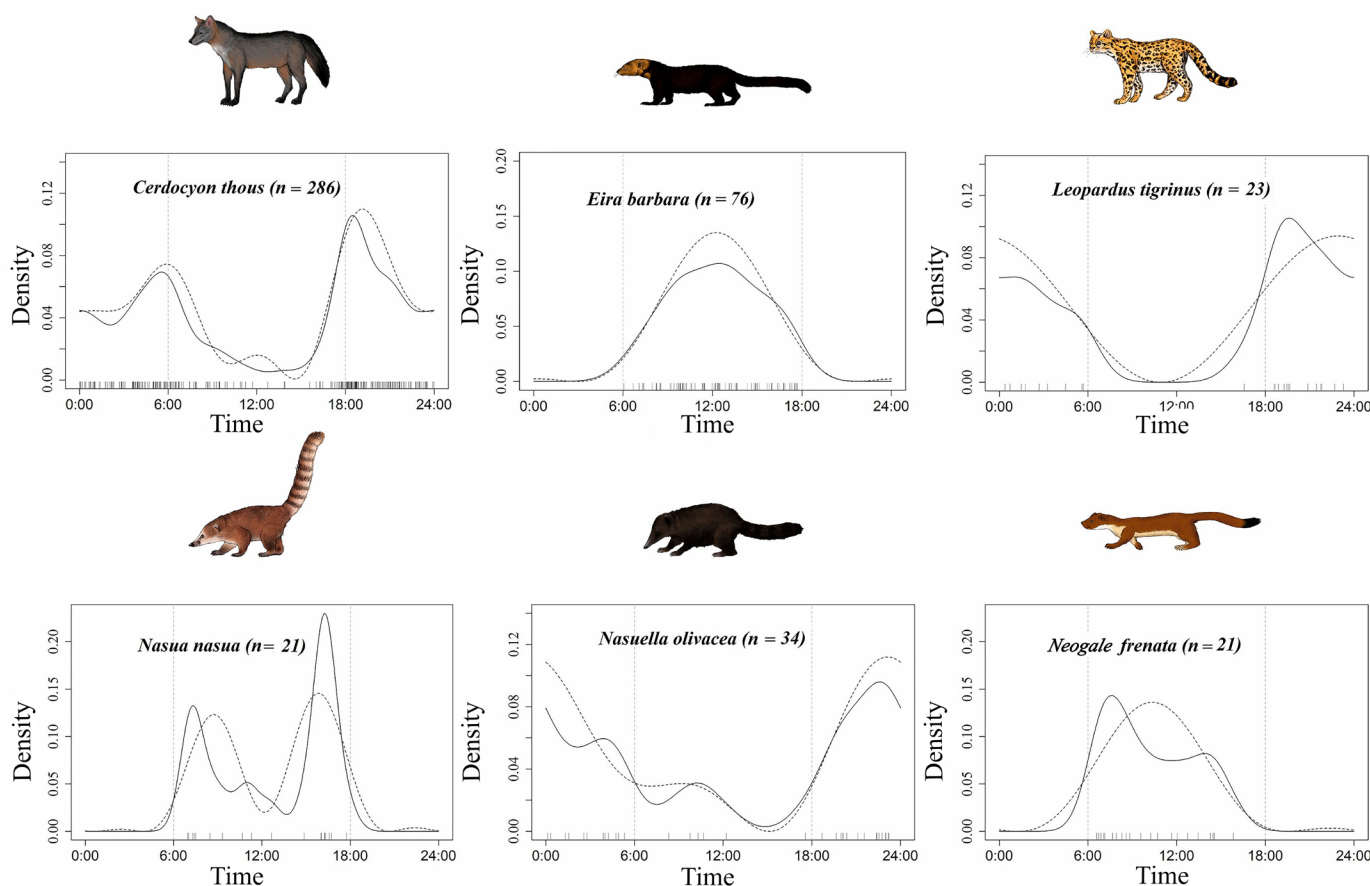


Figure 2. Daily activity patterns of mesocarnivores in the southeast Aburrá Valley. Records are marked as small vertical bars on the time axis. The dotted and solid lines represent estimates by non-negative trigonometric sum (STN) and Kernel density (DK), respectively. Vertical dotted lines mark the dawn (end of astronomical twilight) and dusk (beginning of astronomical twilight).

before dawn (Figure 2). In the case of the western mountain coati, its activity shows two main peaks, one well-marked starting after sunset (18:00 hrs) with an increase toward midnight, followed by a second, much milder peak before dawn (06:00 hrs). This species also shows a slight activity around noon, recorded only under a highway bridge (Via El Escobero; Figure 2).

Tayra (*Eira barbara*), ring-tailed coati (*Nasua nasua*), and long-tailed weasel (*Neogale frenata*) exhibit a mainly diurnal activity pattern (Figure 2). The tayra begins its activity after dawn, with a peak toward noon, followed by a decrease before dusk (Figure 2). The ring-tailed coati has only two marked peaks of activity: one starting after dawn with a descent in activity near noon and a second peak around 14:00 hrs that decreases before dusk (Figure 2). The long-tailed weasel has a marked peak of activity after dawn (06:00 hrs) with a decrease toward noon (12:00 hrs), followed by a slight increase in the early afternoon hours (~14:00 hrs) and decreasing before dusk (Figure 2).

As regards the influence of the lunar phase, only the northern tiger cat shows significant activity around the crescent moon that decreases toward the new moon. The other two species (crab-eating fox and western mountain coati) show no variations in activity throughout the lunar phases (Table 1).

We observed a variable overlap of activity patterns between pairs of mesocarnivore species, with a tendency to a low overlap, as in the case of *C. thous* and *E. barbara* (Figure 3). The greatest overlap levels were recorded between *L. tig-*

Table 1. Rayleigh test of uniformity for the six mesocarnivores activities and the lunar phase for mainly nocturnal species. *n*: Total number of records, * significant values at 95 % ($P < 0.05$).

Species	<i>n</i>	<i>P</i>	Lunar phase	<i>P</i>
<i>Cerdocyon thous</i>	286	1.5E-11*	Crescent moon	0.118
<i>Eira barbara</i>	76	1E-12*		
<i>Leopardus tigrinus</i>	23	0.000179*	Waning crescent-new moon	0.000461*
<i>Nasua nasua</i>	21	0.002*		
<i>Nasuella olivacea</i>	34	0.000713*	Waning half	0.091
<i>Neogale frenata</i>	21	2.84E-6*		

rinus and *C. thous*, and between *L. tigrinus* and *N. olivacea* (Figure 5). Moderate overlap levels were observed between *E. barbara* and *Nasua nasua*, *E. barbara* and *N. frenata*, *N. nasua* and *N. frenata*, and *N. olivacea* and *C. thous* (Figure 3).

Functional Similarity Analysis. The similarity analysis shows two main clusters. The first shows a high similarity between the coaties, followed by their similarity with the tayra. These three species were grouped with the crab-eating fox and the raccoon. Together, these five species show an intermediate degree of ecological similarity (Figure 4). The second cluster shows a high similarity between the tiger cat (~88 %), which is grouped with the yaguarundi and the long-tailed weasel at a similarity of around 70 %. These two main groups show a similarity of about 40 %; that is, they show important segregation in terms of their ecological traits (Figure 4).

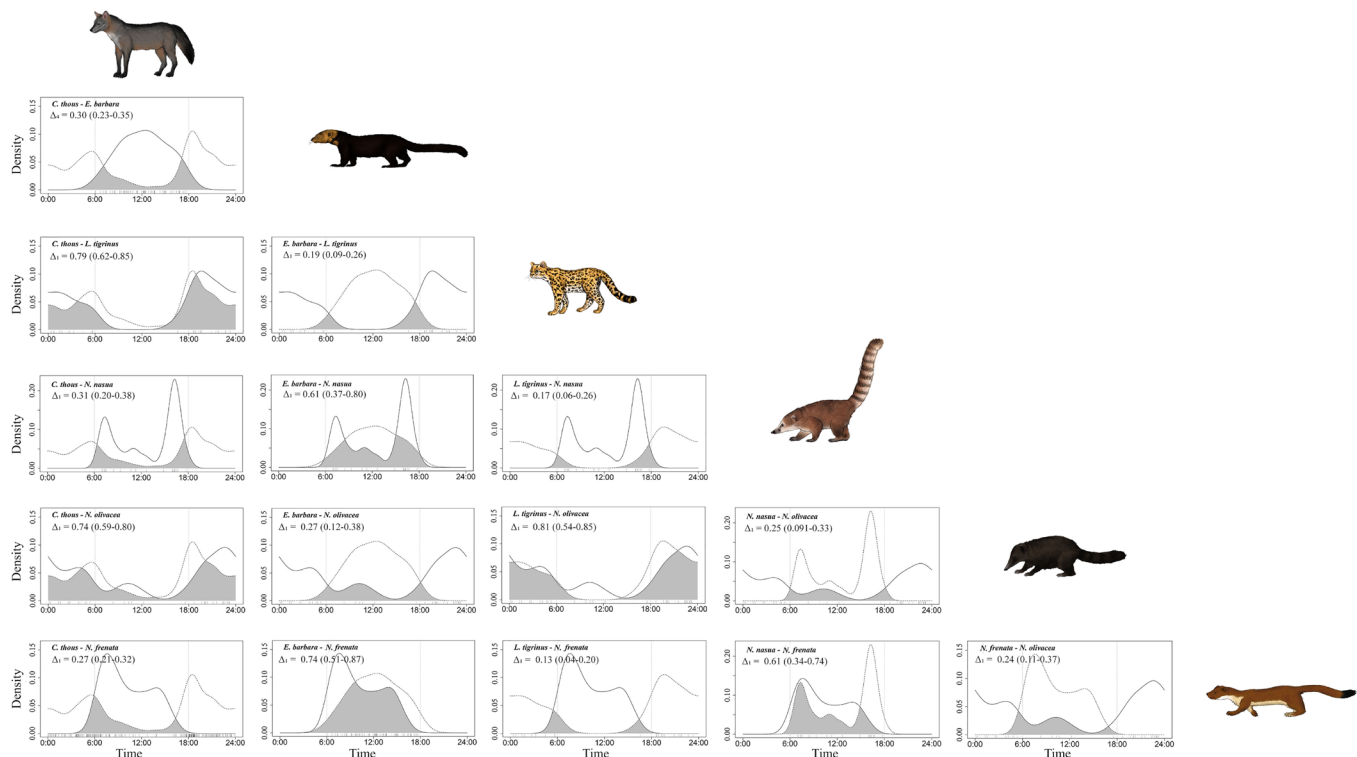


Figure 3. Daily activity patterns overlap between pairs of mesocarnivore species. The gray shaded area represents the overlap level. Δ_1 and Δ_4 represent the overlap coefficients; 95% confidence intervals are shown in parentheses. Low overlap level ($\Delta \leq 0.5$), moderate overlap ($0.5 < \Delta \leq 0.75$), and high overlap ($\Delta > 0.75$). The dashed and solid lines represent the first and second species, respectively. Vertical dotted lines mark the dawn (end of astronomical twilight) and dusk (beginning of astronomical twilight).

Discussion

The species activity patterns may be partly determined by the climate, habitat structure and preference, and by interspecific interactions, where, for example, intra-guild predation plays a central role in the coexistence of potentially competing species (Ramírez-Mejía and Sánchez 2016; Mpemba et al. 2019; Easter et al. 2020). However, in landscapes surrounded by an important anthropic activity, these dynamics can be affected, disrupting how the different mesocarnivorous groups interact with each other (Easter et al. 2020; Mendes et al. 2020). In this sense, the low number of records for some species despite the great sampling effort may be associated with their cryptic nature, a low abundance associated with low ecological tolerance to human activity, or poor detectability of cameras located in wooded areas (Boron et al. 2019; García-R et al. 2019). However, although this study did not directly assess how development and anthropic disturbance can affect mesocarnivores activity and their interactions with each other, it is evident that the development processes have significantly fragmented and reduced the original extent of the habitat for these species, which probably influenced the activity patterns recorded here. For example, different works (Treves and Karanth 2003; Gaynor et al. 2018; Van Cleave et al. 2018; Wang et al. 2019) state that the activity of carnivores may vary to reduce the risk of conflict with humans in areas subjected to heavy anthropic pressure.

In general, the observed activity patterns are similar to those reported in other studies throughout the distribution ranges of these species (e. g., Sheffield and Thomas 1997; Tortato and Oliveira 2005; Faria-Corrêa et al. 2009; Delgado-V et al. 2011; Oliveira-Santos et al. 2012; González-Maya et al. 2015; Cáceres-Martínez et al. 2016; Ramírez-Mejía and Sánchez 2016; Penido et al. 2017; Marinho et al. 2018b; Dias et al. 2019; Mena y Yagui 2019; Nagy-Reis et al. 2019; Marinho et al. 2020; Villafañe-Trujillo et al. 2021). However, some important aspects are observed, likely associated with adjustments in the behavior, foraging, reduced risk of predation, and antagonistic encounters with other species (Penido et al. 2017; Mpemba et al. 2019). For instance, although *E. barbara*, *N. frenata*, and *Nasua nasua* show diurnal patterns, as suggested (Sheffield and Thomas 1997; Delgado-V et al. 2011; González-Maya et al. 2015; Cáceres-Martínez et al. 2016; Ramírez-Mejía and Sánchez 2016; Mena and Yagui 2019; Villafañe-Trujillo et al. 2021), the first two species show a single peak of activity, while *N. nasua* showed two peaks of activity not previously reported. It is worth noting that Sheffield and Thomas (1997) mention that the large-tailed weasel is active both day and night, contrasting with our observations in the present study. This is likely due to the low number of records, low abundance, lower nighttime activity given the weather conditions in the area, or limited camera detectability. However, the latter is less likely in our study site since we have recorded (at night) smaller mammal species, such as rodents, marsupials, and shrews with the same type of cameras.

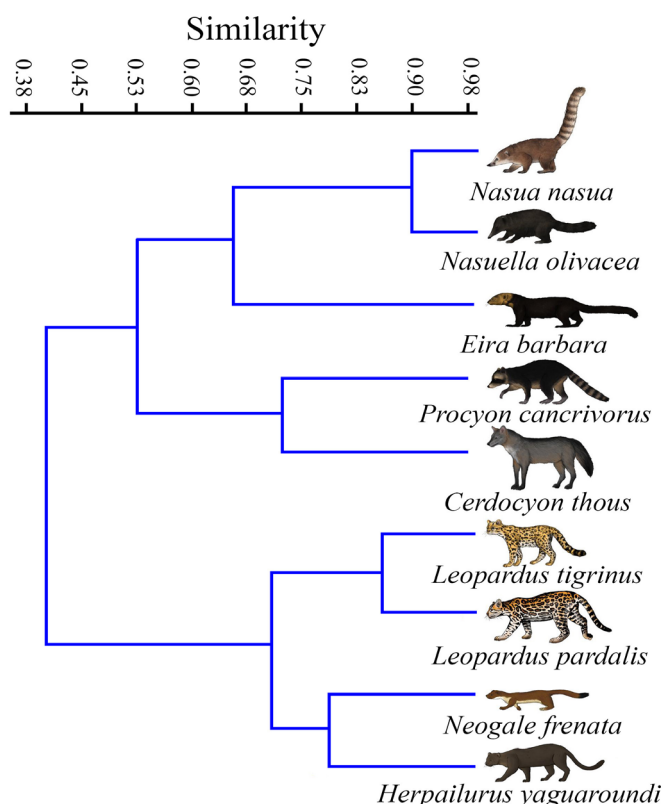


Figure 4. Functional similarity Cluster between mesocarnivores species inhabiting the southeast Aburrá Valley.

With regard to species with a nocturnal activity pattern, although *N. olivacea* has been reported as a mainly nocturnal species (Cáceres-Martínez et al. 2016; Ramírez-Mejía and Sánchez 2016; Mena and Yagui 2019), in our study area, the species showed a small peak of activity in the morning hours before noon. These daytime records correspond to activity under a highway bridge, where low light intensity predominates. This could be related to a sense of safety and low predation risk for these individuals, which has important spatial and temporal implications for the species (Easter et al. 2020). However, Rodríguez-Bolaños et al. (2003) suggested a purely diurnal activity for *N. olivacea* from telemetry data of a single male individual marked in a high Andean forest. The difference in daily activity of the same species is likely due to the reduction of independent records, which may be affecting the effectiveness of activity estimations, for example, by eliminating intermediate or nighttime records (Dde Solla et al. 1999; Blundell et al. 2001; Peral et al. 2022).

On the other hand, the activity of *C. thous* partly agrees with reports for other regions throughout its range (Penido et al. 2017; Marinho et al. 2020). Here, north of the Andes, we observed a mainly nocturnal activity, with a slight daytime activity. This contrasts with the findings for the Atlantic Forest and the Catinga in Brazil, where the species is sympatric with other canids of similar size and shows a trend toward being nocturnal, while the other species (*Lycalopex gymnocercus* and *L. vetulus*) display a trend toward diurnal habits (Faria-Corrêa et al. 2009; Dias and Bocchiglieri 2016;

[Penido et al. 2017](#); [Marinho et al. 2020](#)). In this sense, sympatry can occur if species of similar size differ in one or more ecological traits, for example, in time activity or the primary food resources used ([Easter et al. 2020](#); [Godsoe et al. 2015](#), [Arias-Alzate et al. 2022](#)). Thus, similar, and potentially competitive sympatric species, such as mesocarnivores, should be segregated according to other ecological niche traits to avoid competition (*i. e.*, competitive exclusion), producing more diffuse patterns of interspecific interaction ([Chesson 2000](#); [Arias-Alzate et al. 2022](#)).

Regarding felids, although three species of small felines were recorded, only *L. tigrinus* had a sufficient number of records. The activity of this species is similar to that reported for Cerrado and the Catinga in Brazil, with nocturnal activity after sunset and before sunrise ([Tortato and Oliveira 2005](#); [Oliveira-Santos et al. 2012](#); [Penido et al. 2017](#); [Marinho et al. 2018b](#); [Dias et al. 2019](#); [Nagy-Reis et al. 2019](#); [Marinho et al. 2020](#)). However, these authors also report some daytime activity and suggest that this occurs when the species is found in sympatry with other felines. However, this feline inhabiting these two zones has been proposed as two new species (*Leopardus guttulus* and *L. emilie*; [Do Nascimento and Feijo 2017](#)). The only areas of Colombia with records of daytime activity for *L. tigrinus* are heavily fragmented areas disturbed by anthropic activities, where some individuals have been roadkilled (Arias-Alzate pers. obs.).

Three other species of felines (*Leopardus pardalis*, *Puma concolor*, and *H. jaguarundi*) inhabit our study area; although we did not estimate their activity patterns due to the low number of records, they were recorded both at night and during the day. According to observations on these species from camera traps in unpublished information and literature reports (*e. g.*, [Ramírez-Mejía and Sánchez 2016](#); [Penido et al. 2017](#); [Massara et al. 2018](#); [Marinho et al. 2018b](#); [Dias et al. 2019](#); [Nagy-Reis et al. 2019](#); [Marinho et al. 2020](#)), we hypothesize that there is a temporal segregation between these species, mainly between *L. tigrinus* and *H. jaguarundi*, given their similar sizes and feeding habits (*i. e.*, hypercarnivores). By contrast, the coexistence between the ocelot and the puma (a species recorded in the Aburrá Valley 10 years ago, [Arias-Alzate et al. 2015](#)) would be mediated by size differentiation and spatial segregation at the local level to avoid inter-guild predation to a large extent (*i. e.*, fear landscapes created by larger predators; [Treves and Karanth 2003](#); [de Oliveira and Pereira 2014](#); [Wang et al. 2019](#); [Arias-Alzate et al. 2022](#); [Zaman et al. 2022](#)). Thus, the segregation of felines according to functional traits would be a driver of sympatry in these species ([Penido et al. 2017](#); [Massara et al. 2018](#); [Marinho et al. 2018b](#); [Dias et al. 2019](#); [Nagy-Reis et al. 2019](#); [Marinho et al. 2020](#); [Arias-Alzate et al. 2022](#)).

It should be noted that we found a significant trend in the activity of *L. tigrinus* during the lunar phase waning toward the new moon in the high Andean forests of the study area. This may be a strategy to avoid intra-guild predation when foraging in forested areas while maximizing energy gain by synchronizing their activity pattern with that of their

potential prey, as proposed for other carnivorous species ([Harmsen et al. 2011](#); [Foster et al. 2013](#)). However, [Marinho et al. \(2018a\)](#), in a study in the Catinga (lowlands) in Brazil, found no direct influence of the lunar cycle on this species, which, as mentioned above, has been proposed as a different species ([Do Nascimento and Feijo 2017](#)).

These activity patterns and the different trends in the overlap between these species seemingly result from the segregation of their functional ecological attributes (*i. e.*, functional niche) to reduce interspecific competition, the predation risk, and, therefore, facilitate coexistence, as suggested in other works ([Nagy-Reis et al. 2019](#); [Marinho et al. 2020](#), [Arias-Alzate et al. 2022](#)). This segregation would be mediated mainly by size, *i. e.*, species of similar size would become segregated in one or more functional attributes ([Arias-Alzate et al. 2022](#)).

Thus, time segregation appears as an additional mechanism to reduce and avoid interference competition between ecologically similar and potentially competing species ([Monterroso et al. 2014](#); [Massara et al. 2018](#); [Nagy-Reis et al. 2019](#); [Marinho et al. 2020](#); [Arias-Alzate et al. 2022](#)).

This hypothesis would be consistent with our findings, as more than 86 % of the pairs of species studied exhibited a low or moderate activity overlap. Only a few pairs of species showed a high overlap but displayed additional niche segregation, suggesting more diffuse interactions between these species ([Chesson 2000](#), [Arias-Alzate et al. 2022](#)). For example, although *N. nasua* and *N. olivacea* showed a similar food pattern, they differ in size and are segregated in their temporal niche, as observed in areas where the two species are sympatric, mainly in high areas ([Ramírez-Mejía and Sánchez 2016](#); [Mena and Yagui 2019](#)). Likewise, species with intermediate (*i. e.*, *E. barbara* and *N. frenata*) and high (*i. e.*, *C. thous*, *L. tigrinus*, and *N. olivacea*) temporal overlap show segregation based on their traits, particularly size and dietary preferences ([Dias and Bocchiglieri 2016](#); [Ramírez-Mejía and Sánchez 2016](#); [Mena and Yagui 2019](#); [Marinho et al. 2020](#)). This suggests that resource partitioning would also be recognized as another mechanism that facilitates coexistence ([Hearn et al. 2018](#); [Nagy-Reis et al. 2019](#)). For instance, [Bubadué et al. \(2016\)](#) noted that when in sympatry with other canids from the south of the continent (*e. g.*, *Lycalopex vetulus* and *L. gymnocercus*), *C. thous* tends to be far more carnivorous, unlike individuals of the same species inhabiting the north of the continent.

Although this study did not directly assess how development and anthropic disturbance can affect mesocarnivore activity and their interaction in peri-urban ecosystems, it is clear that development processes have caused a reduction of the original habitat of these species. In this sense, the low number of records obtained for some species may be associated not only with poor detectability but also with low abundance as a consequence of these anthropic pressures. To note, abundance would also be declining due to deaths from collisions with motor cars on roads adjacent to these ecosystems, where a large number of individuals of

these species have been found (*e. g.*, more than 14 individuals of northern tiger cat over the past ten years; [Delgado-V 2007, 2014](#); [Arias-Alzate et al. 2014, 2016](#)).

Our results suggest that mesocarnivore species inhabiting the Aburrá Valley show variable temporal segregation, with a tendency to a low overlap, which would help mediate interactions and coexistence between these species. These results contribute to the knowledge about the ecology of these species and the interactions between them, mainly in ecosystems surrounding large cities north of the Andes. It is important to highlight the need to implement conservation strategies to generate tools and management strategies for preserving these ecosystems by identifying priority conservation areas or restructuring poorly functional protected ones. This would greatly favor the connection between populations of these and other species, both across the Aburrá Valley and at the regional level, as well as the conservation of ecological and evolutionary processes and, hence, of the environmental services of the territory.

Acknowledgments

Special thanks to Agustín Gutiérrez Henao, director of Ecosystems and Biodiversity at the Secretariat of Environment and Rural Development of the municipality of Envigado, for allowing us to use information from the monitoring of the Sistema Local de las Áreas Protegidas de Envigado (Local System of Protected Areas of Envigado; SILAPE); to Juan Manuel Obando Tobón for his assistance in information gathering from these monitoring; to Mateo Escobar and María Adelaida Escobar of Andinobates for the illustrations of the species; and to Juan Fernando Acevedo-Quintero for the previous comments that helped improve the manuscript. María Elena Sánchez-Salazar translated the manuscript into English.

Literature cited

- AMARASEKARE, P. 2002. Interference competition and species coexistence. *Proceedings of the Royal Society of London. Series B: Biological Sciences* 269:2541-2550.
- ANDRADE PONCE, G. P., ET AL. 2016. Estado del conocimiento y prioridades de investigación sobre las familias Canidae, Mephitidae y Procyonidae (Mammalia: Carnivora) en Colombia. *Revista de la Academia Colombiana de Ciencias Exactas, Físicas y Naturales* 40:500-513.
- ARIAS-ALZATE, A., ET AL. 2015. Presencia de Puma (*Puma concolor*) en un paisaje periurbano al sur del Valle de Aburrá, Antioquia, Colombia. *Mammalogy Notes* 2:24-28.
- ARIAS-ALZATE, A., C. A. DELGADO-V, AND J. F. NAVARRO. 2016. Nuevos registros de simpatria de *Nasua nasua* y *Nasuella olivacea* (Carnivora: Procyonidae) en el Valle de Aburrá (Antioquia) y anotaciones sobre sus distribuciones en Colombia. *Mammalogy Notes* 3:49-53.
- ARIAS-ALZATE, A., ET AL. 2022. Functional niche constraints on carnivore assemblages (Mammalia: Carnivora) in the Americas: What facilitates coexistence through space and time? *Journal of Biogeography* 49:497-510.
- ARIAS-ALZATE, A., ET AL. 2014. Recent confirmed records of the Oncilla (*Leopardus tigrinus*) in the department of Antioquia, Colombia. *Mammalogy Notes* 1:4-5.
- ARIAS-ALZATE, A., ET AL. 2020. Environmental Drivers and Distribution Patterns of Carnivore Assemblages (Mammalia: Carnivora) in the Americas: Past to Present. *Journal of Mammalian Evolution* 27:759-774.
- ARIAS-ALZATE, A., ET AL. 2021. Presencia del Grisón *Galictis vittata* (Carnivora: Mustelidae) en el Valle de Aburrá, norte de los Andes colombianos. *Mammalogy Notes* 7:287-287.
- AZEVEDO, F. C., ET AL. 2018. Puma activity patterns and temporal overlap with prey in a human-modified landscape at Southeastern Brazil. *Journal of Zoology* 305:246-255.
- BLUNDELL, G. M., J. A. K. MAIER, AND E. M. DEBEVEC. 2001. Linear home ranges: effects of smoothing, sample size, and autocorrelation on kernel estimates. *Ecological Monographs* 71:469-489.
- BORON, V., ET AL. 2019. Richness, diversity, and factors influencing occupancy of mammal communities across human-modified landscapes in Colombia. *Biological Conservation* 232:108-116.
- BROENNIMANN, O., ET AL. 2012. Measuring ecological niche overlap from occurrence and spatial environmental data. *Global Ecology and Biogeography* 21:481-497.
- BU, H., ET AL. 2016. Spatial Co-occurrence and activity patterns of mesocarnivores in the temperate forests of Southwest China. *Plos One* 11:1-15.
- BUBADUÉ, J. DE M., ET AL. 2016. Character displacement under influence of Bergmann's rule in *Cerdocyon thous* (Mammalia: Canidae). *Hystrix, the Italian Journal of Mammalogy* 27:83-90.
- CÁCERES-MARTÍNEZ, C. H., A. A. ACEVEDO RINCÓN, AND J. F. GONZÁLEZ-MAYA. 2016. Terrestrial medium and large-sized mammal's diversity and activity patterns from Tamá National Natural Park and buffer zone, Colombia. *Therya* 7:285-298.
- CASE, T. J., AND M. E. GILPIN. 1974. Interference competition and niche theory. *Proceedings of the National Academy of Sciences* 71:3073-3077.
- CHÁVEZ, C., ET AL. 2013. Manual de fototrampeo para estudio de fauna silvestre. El jaguar en México como estudio de caso. Alianza WWF-Telcel, Universidad Nacional Autónoma de México. Ciudad de México, México.
- CHESSON, P. 2000. Mechanisms of maintenance of species diversity. *Annual Review of Ecology and Systematics* 31:343-366.
- CHESSON, P. L., AND P. J. GRUBB. 1990. Geometry, heterogeneity and competition in variable environments. *Philosophical Transactions of the Royal Society of London* 330:165-173.
- CROOKS, K. R., AND M. E. SOULÉ. 1999. Mesopredator release and avifaunal extinctions in a fragmented system. *Nature* 400:563-566.
- CROOKS, K. R. 2002. Relative sensitivities of mammalian carnivores to habitat fragmentation. *Conservation biology* 16:488-502.
- DE OLIVEIRA, T. G., AND J. A. PEREIRA. 2014. Intraguild Predation and Interspecific Killing as Structuring Forces of Carnivore Communities in South America. *Journal of Mammalian Evolution* 21:427-436.
- DE SOLLÀ, S. R., R. BONDURIANSKY, AND R. J. BROOKS. 1999. Eliminating autocorrelation reduces biological relevance of home range estimates. *Journal of Animal Ecology* 68:221-234.

- DELGADO-V, C. A. 2007. Muerte de mamíferos por vehículos en la vía del Escobero, Envigado (Antioquia), Colombia. *Actualidades Biológicas* 29:229-233.
- DELGADO-V, C. A. 2014. Additions to mammals killed by motor vehicles in Vía del Escobero, Envigado (Antioquia), Colombia. *Revista EIA* 22:147-153.
- DELGADO-V, C. A., ET AL. 2011. Behaviour of the Tayra *Eira barbara* near Medellín, Colombia: Preliminary data from a video-capturing survey. *Small Carnivore Conservation* 44:19-21.
- DÍAS, D. M., ET AL. 2019. Feline predator-prey relationships in a semi-arid biome in Brazil. *Journal of Zoology* 307:282-291.
- DÍAS, D. M., AND A. BOCCHIGLIERI. 2016. Trophic and spatio-temporal niche of the crab-eating fox, *Cerdocyon thous* (Linnaeus, 1766) (Carnivora: Canidae), in a remnant of the Caatinga in northeastern Brazil. *Mammalia* 80:281-291.
- DO NASCIMENTO, F. O., AND A. FEIJÓ. 2017. Taxonomic revision of the tigrina *Leopardus tigrinus* (Schreber, 1775) species group (Carnivora, Felidae). *Papéis Avulsos De Zoologia* 57:231-264.
- DONADIO, E., AND S. W. BUSKIRK. 2006. Diet, morphology, and interspecific killing in Carnivora. *American Naturalist* 167: 524-536.
- EASTER, T., ET AL. 2020. Intraguild dynamics of understudied carnivores in a human-altered landscape. *Ecology and Evolution* 10:5476-5488.
- ESRI. 2018. ArcGIS 10.5. Environmental Systems Research Institute: Redlands. CA, USA.
- FARIA-CORREIA, ET AL. 2009. Activity, habitat use, density, and reproductive biology of the crab-eating fox (*Cerdocyon thous*) and comparison with the pampas fox (*Lycalopex gymnocercus*) in a Restinga area in the southern Brazilian Atlantic Forest. *Mammalian Biology* 74:220-229.
- FERGNANI, P. N., AND A. RUGGIERO. 2015. Ecological Diversity in South American Mammals: Their Geographical Distribution Shows Variable Associations with Phylogenetic Diversity and Does Not Follow the Latitudinal Richness Gradient. *Plos One* 10: e0128264.
- FERNÁNDEZ-DURÁN, J. J. 2004. Circular Distributions Based on Nonnegative Trigonometric Sums. *Biometrics* 60:499-503.
- FOSTER, V. C., ET AL. 2013. Jaguar and puma activity patterns and predator-prey interactions in four Brazilian biomes. *Biotropica* 45:373-379.
- GARCÍA-R, S., ET AL. 2019. Habitat use and activity patterns of *Leopardus pardalis* (Felidae) in the Northern Andes, Antioquia, Colombia. *Biodiversity* 20:5-19.
- GAYNOR, K. M., ET AL. 2018. The influence of human disturbance on wildlife nocturnality. *Science* 360: 1232- 1235.
- GLEN, A. S., AND C. R. DICKMAN. 2005. Complex interactions among mammalian carnivores in Australia, and their implications for wildlife management. *Biological Reviews* 80(3): 387-401.
- GODSOE, W., R. MURRAY, AND M. J. PLANK. 2015. The effect of competition on species' distributions depends on coexistence, rather than scale alone. *Ecography* 38: 1071-1079.
- GONZÁLEZ-MAYA, J., ET AL. 2011. Research priorities for the small carnivores of Colombia. *Small Carnivore Conservation* 44:7-13.
- GONZÁLEZ-MAYA, J., ET AL. 2015. Activity patterns of Tayra *Eira barbara* populations from Costa Rica and Colombia: Evidence of seasonal effects. *Revista Biodiversidad Neotropical* 5:96-104.
- GONZÁLEZ-MAYA, J., ET AL. 2017. Distribution of mammal functional diversity in the Neotropical realm: Influence of land-use and extinction risk. *PLoS ONE* 12: e0175931.
- JHAMMER, Ø., D. A. HARPER, AND P. D. RYAN. 2001. PAST: Paleontological statistics software package for education and data analysis. *Palaeontologia electrónica* 4:9.
- HARMSÉN, B. J., ET AL. 2011. Jaguar and puma activity patterns in relation to their main prey. *Mammalian Biology* 76:320-324.
- HEARN, A. J., ET AL. 2018. Spatio-temporal ecology of sympatric felids on Borneo. Evidence for resource partitioning? *Plos One* 13:e0200828.
- HERMELIN, M. 2007. Valle de Aburrá: ¿Quo vadis? *Gestión y ambiente* 10:7-16.
- HOLDRIDGE, L. R. 1947. Determination of World Plant Formations from Simple Climatic Data. *Science* 105:367-368.
- HOLT, R. D., AND G. A. POLIS. 1997. A theoretical framework for intraguild predation. *The American Naturalist* 149:745-764.
- HUNTER, J., AND T. CARO. 2008. Interspecific competition and predation in American carnivore families. *Ethology Ecology and Evolution* 20:295-324.
- HUTCHINSON, G. E. 1978. Introduction to population ecology. Yale University Press. London, England.
- JONES, K. E., ET AL. 2009. PanTHERIA: A species-level database of life history, ecology, and geography of extant and recently extinct mammals. *Ecology* 90: 2648-2648.
- KARANTH, K. U., ET AL. 2017. Spatio-temporal interactions facilitate large carnivore sympatry across a resource gradient. *Proceedings of the Royal Society B: Biological Sciences* 284:20161860.
- KOVACH, W. L. 2011. Oriana-circular statistics for windows, ver. 4. Kovach Computing Services, Pentraeth. Wales, U. K.
- KRONFELD-SCHOR, N., AND T. DAYAN. 2003. Partitioning of time as an ecological resource. *Annual review of ecology, evolution, and systematics* 34:153-181.
- LAUNDRE, J. W., L. HERNÁNDEZ, AND W. J. RIPLE. 2010. The landscape of fear: ecological implications of being afraid. *The Open Ecology Journal* 3:1-7.
- LINKIE, M., AND M. S. RIDOUT. 2011. Assessing tiger-prey interactions in Sumatran rainforests. *Journal of Zoology* 284:224-229.
- MARINHO, P. H., ET AL. 2018a. Estimating occupancy of the Vulnerable northern tiger cat *Leopardus tigrinus* in Caatinga drylands. *Mammal Research* 63: 33-42.
- MARINHO, P. H., ET AL. 2018b. Activity patterns of the threatened northern tiger cat *Leopardus tigrinus* and its potential prey in a Brazilian dry tropical forest. *Mammalian Biology* 89:30-36.
- MARINHO, P. H., ET AL. 2020. Temporal niche overlap among mesocarnivores in a Caatinga dry forest. *European Journal of Wildlife Research* 66:1-13.
- MASSARA, R. L., ET AL. 2018. Effect of humans and pumas on the temporal activity of ocelots in protected areas of Atlantic Forest. *Mammalian Biology* 92:86-93.
- MENA, J. L., AND H. YAGUI. 2019. Coexistence and habitat use of the South American coati and the Mountain coati along an elevational gradient. *Mammalian Biology* 98:119-127.
- MENDES, C. P., ET AL. 2020. Landscape of human fear in Neotropical rainforest mammals. *Biological Conservation* 241:108257.
- MEREDITH, M., AND M. RIDOUT. 2018. Overview of the overlap package. R Project.
- MONTERROSO, P., P. C. ALVES, AND P. FERRERAS. 2014. Plasticity in circadian activity patterns of mesocarnivores in Southwestern Europe: Implications for species coexistence. *Behavioral Ecology and Sociobiology* 68:1403-1417.

- MPEMBA, H., F. YANG, AND G. JIANG. 2019. The implications of fear ecology for interactions among predators, prey and mesopredators. *Journal of Animal and Plant Sciences* 29:1519-1527.
- NAGY-REIS, M. B., ET AL. 2019. Temporal and dietary segregation in a neotropical small-felid assemblage and its relation to prey activity. *Mammalian Biology* 95:1-8.
- NAVARRO-PELÁEZ, J. F., A. ARIAS-ALZATE, AND C. A. DELGADO-V. 2021. Huellas y rastros de los mamíferos en Colombia. Editorial CES. Medellín, Colombia.
- OLIVEIRA-SANTOS, L.G.R., ET AL. 2012. Abundance changes and activity flexibility of the oncilla, *Leopardus tigrinus* (Carnivora: Felidae), appear to reflect avoidance of conflict. *Zoologia (Curitiba)* 29:115-120.
- PALOMARES, F., AND T. M. CARO. 1999. Interspecific killing among mammalian carnivores. *The American Naturalist* 153:492-508.
- PENIDO, G., ET AL. 2017. Mesocarnivore activity patterns in the semiarid Caatinga: Limited by the harsh environment or affected by interspecific interactions? *Journal of Mammalogy* 98:1732-1740.
- PENTERIANI, V., ET AL. 2013. Responses of a top and a mesopredator and their prey to moon phases. *Oecologia* 173:753-766.
- PERAL, C., M. LANDMAN, AND G. I. H. KERLEY. 2022. The inappropriate use of time-to-independence biases estimates of activity patterns of free-ranging mammals derived from camera traps. *Ecology and Evolution* 12:e9408.
- PORFIRIO, G., ET AL. 2016. Activity patterns of ocelots and their potential prey in the Brazilian Pantanal. *Mammalian Biology* 81:11-517.
- PORTO, L. M. V., R. S. ETIENNE, AND R. MAESTRI. 2021. Explosive diversification following continental colonizations by canids. *BioRxiv*:1-16.
- PRATAS-SANTIAGO, L. P., ET AL. 2016. The moon cycle effect on the activity patterns of ocelots and their prey. *Journal of Zoology* 299:275-283.
- R DEVELOPMENT CORE TEAM. 2013. R: A language and environment for statistical computing. Vienna, Austria.
- RAMÍREZ-CHAVES, H. E., A. F. SUÁREZ-CASTRO, AND J. F. GONZÁLEZ-MAYA. 2016. Cambios recientes a la lista de los mamíferos de Colombia. *Mammalogy notes* 3:1-9.
- RAMÍREZ-MEJÍA, A. F., AND F. SÁNCHEZ. 2016. Activity patterns and habitat use of mammals in an Andean forest and a Eucalyptus reforestation in Colombia. *Hystrix, the Italian Journal of Mammalogy* 27:1-7.
- RIDOUT, M. S., AND M. LINKIE. 2009. Estimating overlap of daily activity patterns from camera trap data. *Journal of Agricultural, Biological, and Environmental Statistics* 14:322-337.
- RODRÍGUEZ-BOLAÑOS, A., P. SÁNCHEZ, P., AND A. CADENA. 2003. Patterns of activity and home range of Mountain Coati *Nasua olivacea*. *Small Carnivore Conservation* 29:16-19.
- ROEMER, G. W., M. E. GOMPPER, AND B. VAN VALKENBURGH. 2009. The Ecological Role of the Mammalian Mesocarnivore. *BioScience* 59:165-173.
- ROSENZWEIG, M. L. 1966. Community structure in sympatric Carnivora. *Journal of Mammalogy* 47:602-612.
- ROWCLIFFE, J. M., ET AL. 2014. Quantifying levels of animal activity using camera trap data. *Methods in ecology and evolution* 5:1170-1179.
- SCHOENER, T. W. 1974a. Competition and the form of habitat shift. *Theoretical Population Biology* 6:265-307.
- SCHOENER, T. W. 1974b. The compression hypothesis and temporal resource partitioning. *Proceedings of the National Academy of Sciences* 71:4169-4172.
- SEGAR, S. T., ET AL. 2020. The role of evolution in shaping ecological networks. *Trends in Ecology and Evolution* 35: 454- 466.
- SHEFFIELD, S. R., AND H. H. THOMAS. 1997. *Mustela frenata*. *Mammalian Species* 570:1-9.
- TAMBLING, C. J., ET AL. 2015. Temporal shifts in activity of prey following large predator reintroductions. *Behavioral Ecology and Sociobiology* 69:1153-1161.
- TORTATO, M.A., AND T. G. OLIVEIRA. 2005. Ecology of the oncilla (*Leopardus tigrinus*) at Serra do Tabuleiro State Park, southern Brazil. *Cat News* 42:28-30.
- TREVES, A., AND K. U. KARANTH. 2003. Human-carnivore conflict and perspectives on carnivore management worldwide. *Conservation Biology* 17:1491-1499.
- VAN CLEAVE, E. K., ET AL. 2018. Diel patterns of movement activity and habitat use by leopards (*Panthera pardus pardus*) living in a humandominated landscape in central Kenya. *Biological Conservation* 226:224-237.
- VILELLA, M., M. FERRANDIZ-ROVIRA, AND F. SAYOL. 2020. Coexistence of predators in time: Effects of season and prey availability on species activity within a Mediterranean carnivore guild. *Ecology and Evolution* 10: 11408-11422.
- VILLAFANE-TRUJILLO, Á. J., ET AL. 2021. Activity patterns of tayra (*Eira barbara*) across their distribution. *Journal of Mammalogy* gyaal59.
- WANG, J., ET AL. 2019. Human-wildlife conflict pattern and suggested mitigation strategy in the Pamirs of northwestern China. *Rangeland Ecology and Management* 72:210-216.
- WILSON, D. E., AND R. A. MITTERMEIER. 2009. Handbook of the carnivores of the world, vol I—Carnivores. Lynx editions. Barcelona, España.
- ZAMAN, M., ET AL. 2022. Temporal activity patterns of North China leopards and their prey in response to moonlight and habitat factors. *Ecology and Evolution* 12: e9032.

Associated editor: Jorge Servin

Submitted: September 7, 2021; Reviewed: December 13, 2021

Accepted: August 18, 2023; Published on line: September 20, 2023

Appendix 1

Ecological trait descriptions and used for assessing similarity between mesocarnivore species. This information was obtained from previous works ([Jones et al. 2009](#); [Wilson and Mittermeier 2009](#); [González-Maya et al. 2016, 2017](#); [Arias-Alzate et al. 2020](#)). Trait codification in the database was present (1), absent (0)

Body mass (Bm): this ecological trait provides considerable information about the ecology and life history of species and has proven informative for most of the fundamental characteristics of an organism in terms of adaptation to their environment and interaction with other species. The variability in body mass is a good predictor of the ecological niche of species, therefore is considered a proxy of functional diversity due to its relationship with ecosystem functioning.

Locomotor behavior (LB): this ecological trait provides information about the locomotive adaptations to different substrate, indicating a relationship between the species and their environment. This is important because it reflects details of their feeding strategy. Likewise, this trait could reveal much more about carnivore species history life, preferred habitat, foraging behavior, and escape strategy. One species may have one or more locomotor behavior, Aquatic (Ac); Terrestrial (T); Arboricolal (Ar); Scansorial (Sc); Fossorial (F).

Social organization (SO): this ecological trait represents the mean number of individuals of the species present during most of the year outside of the breeding season. Group size is considered as an anti-predator response, since larger groups reduce the risk of predation per capita, by increasing collective vigilance and predator detection, or by collective defense. Groups (G); Solitaries (S); Group size (GS).

Activity pattern (AP): this ecological trait represents the active period where the species is most active during a 24 h cycle. The active period is related to resource use and is influenced by physiological constraints. Diurnal (D), Nocturnal (N); Catameral (C).

Trophic realm (TR): this trait represents the main indicator of resources used and covers several dietary attributes that reflect amplitude of species diet. carnivore (TrC); herbivores (TrHe); Omnivores (TrOm).

Trophic guild (TG): this ecological trait represents the main feeding specialization of the carnivoran species. It describes the different feeding types and allows to distinguish species more precisely. Carnivore big (TgCb); carnivore medium (TgCm); carnivore small (TgCs); carrion (Car); piscivores (TgPis); invertebrates (TgIn); frugivores (TgF).