

Diversity and potential distribution of culicids of medical importance of the Yucatan Peninsula, Mexico

J Guillermo Bond, DSc,⁽¹⁾ David A Moo-Llanes, MSc,⁽¹⁾ Aldo I Ortega-Morales, DSc,⁽²⁾
Carlos F Marina, DSc,⁽¹⁾ Mauricio Casas-Martínez, DSc,⁽¹⁾ Rogelio Danis-Lozano.⁽¹⁾

Bond JG, Moo-Llanes DA, Ortega-Morales AI, Marina CF, Casas-Martínez M, Danis-Lozano R.
Diversity and potential distribution of culicids of medical importance of the Yucatan Peninsula, Mexico.
Salud Publica Mex. 2020;62:379-387.
<https://doi.org/10.21149/11208>

Bond JG, Moo-Llanes DA, Ortega-Morales AI, Marina CF, Casas-Martínez M, Danis-Lozano R.
Diversidad y distribución potencial de culicidos de importancia médica de la Península de Yucatán, México.
Salud Publica Mex. 2020;62:379-387.
<https://doi.org/10.21149/11208>

Abstract

Objective. To determine the species distribution, abundance, and diversity of culicids in the Yucatan Peninsula (YP); their potential distribution, using ecological niche modeling (ENM), and the risk of contact with urban and rural populations. **Materials and methods.** A cross-sectional study was carried out through the YP. The diversity of species was determined with the Shannon index. The potential distribution of the culicids was determined through the ENM, as well as the risk of urban and rural populations through contact with vectors. **Results.** A total of 10 699 specimens, 15 genera and 52 species were registered. Campeche and the Biosphere Reserve of Calakmul exhibited the highest diversity. **Conclusions.** The ENM predict a high suitability in all the YP of *Ae. aegypti*, *An. albimanus*, *An. pseudopuntipennis*, *Cx. coronator*, and *Cx. quinquefasciatus*. The vector species that exhibited the highest risk of contact in the YP were *Cx. quinquefasciatus*, *Ae. aegypti* and *Ae. albopictus*.

Keywords: Culicidae; vector; Shannon index; ecological niche

Resumen

Objetivo. Determinar la distribución, abundancia y diversidad de los culicidos de la Península de Yucatán (PY), su distribución potencial utilizando modelos de nicho ecológico (MNE) y el riesgo de contacto con poblaciones urbanas y rurales. **Material y métodos.** Se realizó un estudio transversal. La diversidad fue determinada por el índice de Shannon. La distribución potencial de los culicidos se determinó a través de MNE, así como el riesgo de las poblaciones urbanas y rurales al contacto con los vectores. **Resultados.** En total, se registraron 10 699 especímenes, 15 géneros y 52 especies. Campeche y la Reserva de la Biosfera de Calakmul presentaron la mayor diversidad. **Conclusiones.** El MNE predice una alta idoneidad en toda la PY para *Ae. aegypti*, *An. albimanus*, *An. pseudopuntipennis*, *Cx. coronator* y *Cx. quinquefasciatus*. Las especies de vectores que presentaron el mayor riesgo de contacto en la PY fueron *Cx. quinquefasciatus*, *Ae. aegypti* y *Ae. albopictus*.

Palabras clave: Culicidae; vector; índice de Shannon; nicho ecológico

The Culicidae family is represented by two subfamilies: Anophelinae and Culicinae, which include species of medical importance in the genera *Anopheles* (Anophelinae) and *Aedes*, *Culex*, *Haemagogus*, *Mansonia*,

Psorophora and *Sabethes* species (Culicinae).¹ Species of these genera are responsible for the transmission of many pathogens of medical importance that cause dengue, yellow fever, chikungunya, Zika, encephalitis,

(1) Centro Regional de Investigación en Salud Pública, Instituto Nacional de Salud Pública. Chiapas, México.

(2) Departamento de Parasitología, Universidad Autónoma Agraria Antonio Narro-Unidad Laguna. Coahuila, México.

Received on: January 24, 2020 • **Accepted on:** April 7, 2020

Corresponding author: Dr. J Guillermo Bond. Centro Regional de Investigación en Salud Pública, Instituto Nacional de Salud Pública.
4ª Av. Norte esq. 19ª, Calle Poniente s/n, col. Centro. 30700 Tapachula, Chiapas, México.
email: gbond@insp.mx

and filariasis, among others.² Of these mosquitoes, *Anopheles* spp. and *Aedes* spp. are responsible for transmitting malaria and dengue, respectively, which cause the highest morbidity and mortality in humans around the world.³

The Yucatan Peninsula (YP) is a region of south-eastern Mexico with an area of approximately 19 760 000 ha. It is formed, to the North, by the states of Yucatan, Quintana Roo and Campeche, and to the south, by Belize and northern Guatemala. Relatively few studies have been published on the mosquitoes of this region, the most outstanding being those of: a) Ibáñez-Bernal and colleagues,⁴ who reported 48 species belonging to 13 genera in the Sian Ka'an Reserve, Quintana Roo; b) the study of Ibáñez-Bernal and colleagues⁵ in which 45 species of mosquitoes were identified in the state of Yucatan; 68 species were found in the state of Quintana Roo, and 61 species were detected in the state of Campeche; c) the mosquitoes of two Natural Protected Areas (NPA) of Yucatan in which 11 genera and 30 species were registered;⁶ d) the mosquitoes of Quintana Roo,⁷ where 13 genera and 41 species of mosquitoes were identified, and e) a study in the state of Quintana Roo reported a taxonomic inventory of 961 specimens and 13 species belonging to four genera.⁸ However, there are no studies on the diversity of species in this region.

New technological tools, based on algorithms, associate the presence of species with the environmental conditions and allow estimating and projecting their potential distribution.⁹ Ecological niche modeling has been used to project the geographic distribution potential for vectors of a number of important arthropod-borne diseases.

The purpose of this study, therefore, was to update our understanding of the diversity of culicids of the three Mexican states of the Yucatan Peninsula, and to determine their abundance, richness, and species diversity, on a state-by-state basis and their potential distribution using ecological niche modeling methods.

Materials and methods

Study area

The study area of this project included urban, suburban and rural localities bordering the Biosphere Reserves (BR) of Calakmul and Los Petenes, located in the state of Campeche; Ría Celestún, located between Campeche and Yucatan; Ría Lagartos, in Yucatan, and Sian Ka'an, in Quintana Roo.

Study design

A cross-sectional study was carried out with four collection periods, the first from April 26 to May 28, 2016; the second, from October 8 to November 7, 2016; the third, from February 1 to March 2, 2017, and the fourth, from June 7 to July 5, 2017. Different sites were sampled in each period. In each study area, the following parameters were recorded: altitude, habitat type, vegetation type, topography, rainfall, temperature, relative humidity and geographical coordinates.

Collection methods

In each site, the following collection methods were used: 1) Larval survey, which involved inspection of all artificial water containers, as well as natural ones (ponds, lagoons, margins of rivers and streams, etc.), in search of immature stages of mosquitoes, through the use of pipettes or metal dippers (500 mL capacity); 2) Ovitrap, comprising one-liter plastic containers, which were filled with 750 mL water and had a strip of filter paper placed around the edge of the water; 3) BG-Sentinel traps, designed to catch adult mosquitoes, and 4) BDV tent traps, for host-seeking mosquitoes.¹⁰

The collected eggs were allowed to hatch, and the resulting larvae were reared to adulthood. In the field, larvae were collected in small plastic bags, and the collected adults were stored in 1.5 mL vials and then transported to the insectary of the Regional Center for Research on Public Health of the National Institute of Public Health (CRISP/INSP, Spanish acronyms) in Tapachula, Mexico, where the larvae were reared to adulthoods (28 ± 2 °C, RH: 70-80%), and the adults were taxonomically identified at species level by means of dichotomous keys.^{11,12} For each species, the number of individuals was recorded and abundance values were transformed ($\log N$). Species were classified as rare species ($\log=0$ to 1), species of intermediate abundance ($\log=>1-2$), and abundant species ($\log=>2$). The specimens collected were deposited in the CRISP/INSP mosquito collection and registered in the National Biodiversity Information System (SNIB/Conabio) through the Biótica 5.0 database.

Species richness and diversity

Species richness (S), Margalef's species richness index (D_{MG}) were calculated. Alpha diversity of species was determined by the Shannon diversity index (H'), likewise the equitability (E) and maximum diversity (H_{max}) were calculated.¹³ These values were determined for

each Biosphere Reserve and by state. Differences in the diversity values were compared by means of a randomization test.¹⁴ All index values were calculated using the Species Diversity and Richness 3.0 program (v. 3.0.3).

Ecological niche models (ENM)

A database was constructed from collections reported in Baak-Baak and colleagues,^{15,16} this study, and the Global Biodiversity Information Facility (GBIF, www.gbif.org/). We obtained a total of 3 458 single records for 14 species (*Aedes aegypti*, *Ae. albopictus*, *Ae. taeniorhynchus*, *Anopheles albimanus*, *An. pseudopunctipennis*, *An. vestitipennis*, *Coquillettidia venezuelensis*, *Culex coronator*, *Cx. interrogator*, *Cx. nigripalpus*, *Cx. quinquefasciatus*, *Haemagogus equinus*, *Mansonia titillans*, *Psorophora confinnis*, and *Sabethes chloropterus*) in the YP, Chiapas and Tabasco.

In order to avoid potential modeling bias related to an important component of model calibration, the accessible region "M",¹⁷ a 200 km radius buffer was created around each point of occurrence of these species in order to extend the limits of the calibration region. Thirteen layers were used to construct the ENM: nine bioclimatic layers, and four topographical layers.¹⁸ Bioclimatic layers (mean annual temperature, seasonal temperature, maximum temperature, minimum temperature, annual temperature range, annual rainfall, precipitation of the wettest month, precipitation of the driest month and seasonality of precipitation) were obtained from WorldClim.¹⁹ The topographical variables (aspect, slope, topographical index and elevation) were downloaded from Hydro 1K. All layers had a spatial resolution of 30 arc-seconds ($\approx 1 \text{ km}^2$).

For the construction of ENM a Maximum Entropy (MaxEnt) algorithm, a machine-learning technique that combines statistics, maximum entropy and Bayesian methods, was used to estimate a suitable probability distribution incorporating restrictions imposed by environmental information.²⁰ Occurrences points were divided into training (75%) and evaluating (25%) data.¹⁸ The parameters for MaxEnt required use of bootstrap procedures for the replicate run type, maximum interactions (N=500), features, regularization multiplier (N=2), max number of background points (N=10 000), bootstrap (N=10) and do clamping.^{21,22}

All models were converted into binary (absence/presence) maps based on 95% of occurrence points²³ in order to create a map of the richness of species of medical importance in the region.¹⁸ Models were evaluated using the partial-Receiver Operating Characteristic (partial-ROC) software, and a ratio was calculated. A total of 1 000 bootstraps runs (in which 50% of evaluation data were resampled with replacement and the area under

the curve [AUC] ratios were recalculated) were used to test the hypothesis that model performance was better than random expectation. The null hypothesis was that better performance was no better than the random expectation when $\geq 95\%$ of bootstrap-replicate AUC ratios were >1 . Partial-ROC software is available for free download at <https://kuscholarworks.ku.edu/handle/1808/10059>.^{23,24}

The total human population growth rate was generated using projections for fertility, mortality and international migration. The population growth rate in Mexico is projected to increase by 30% by 2020. After obtaining the ENM, population projections were calculated for the resident population at risk of contact with vectors for both the rural ($<10\,000$ inhabitants) and urban ($>10\,000$ inhabitants) categories, as reported in Moo-Llanes and colleagues,¹⁸ for 14 species of medical importance present in the YP, Tabasco and Chiapas.

Results

Abundance and species richness

A total of 10 669 individuals belonging to 15 genera and 52 species of culicids present in the YP were taxonomically identified. The state with the highest abundance of individuals was Yucatan, followed by Quintana Roo, and finally, Campeche. When comparing the abundance across Biosphere Reserves, Ría Celestún had the highest abundance of culicids, followed by Ría Lagartos, Sian Ka'an, Los Petenes, and, finally, Calakmul. The highest value for the Margalef index corresponded to Campeche (4.43) and the Calakmul reserve (4.48) (table I).

Alpha diversity

The diversity of species by state was significantly higher (randomization test, $p < 0.001$) in the state of Campeche than in Quintana Roo and Yucatan, although the state of Yucatan had the largest number of individuals (N). This was due to the fact that Campeche had the highest equitability of the three states ($E = 0.57$), in addition to the joint highest species richness ($S = 34$) (table I). When analyzing the diversity of species across the five Biosphere Reserves, the Calakmul reserve exhibited the greatest diversity ($p < 0.001$; $H' = 2.65$), followed by Sian Ka'an, Ría Celestún, Los Petenes and Ría Lagartos. In addition, Calakmul reserve presented the highest species richness ($S = 29$) and the highest equitability index ($E = 0.79$) among the reserves (table I). Across the entire YP, 52 species of culicids were recorded, of which 11 species were found to be very abundant (log

$N > 2.0$ to > 3.0); 16 had an intermediate abundance ($\log N > 1.0$ to 2.0); and 25 were represented by only a few individuals ($\log N = 0.0$ to 1.0), and therefore they were considered as rare species.

Ecological niche models

All models were statistically significant and afforded better than random expectations, with partial-ROC ratios > 1 (figure 1). The YP, the coastal region of Tabasco and Chiapas all had high species richness (figure 2a). The models of ecological niche predicted a high suitability across the YP for *Ae. aegypti* (figure 2b), *An. albimanus* (figure 2e), *An. pseudopunctipennis* (figure 2f), *Cx. coronator* (figure 2i), and *Cx. quinquefasciatus* (figure 2l). The smallest distribution in the study area corresponded to *Cq. venezuelensis* (figure 2h) on the coast of the YP and Chiapas state. In contrast, the Puuc region (intersection between Yucatan, Campeche and Quintana Roo) of the YP and the highlands of Chiapas state were not suitable for *Ae. albopictus* (figure 2c), *An. vestitipennis* (figure 2g), *Hg. equinus* (figure 2m), *Ps. confinnis* (figure 2n) and *Sa. chloropterus* (figure 2o). Much of the state of Chiapas was not suitable for *Cx. interrogator* (figure 2j), *Cx. nigripalpus* (figure 2k) and *Ae. taeniorhynchus* (figure 2d). The species with the highest risk of contact with urban and rural populations in the YP, Tabasco and Chiapas were *Cx. quinquefasciatus* and *Ae. aegypti*, while the species with the lowest risk

Table I
ABUNDANCE, RICHNESS AND DIVERSITY OF CULICID SPECIES OF THE YUCATAN PENINSULA. COLLECTION PERIODS: APRIL 26 TO MAY 28, 2016; OCTOBER 8 TO NOVEMBER 7, 2016; FEBRUARY 1 TO MARCH 2, 2017, AND JUNE 7 TO JULY 5, 2017

State	N	S	D_{MG}	H'	Variance H'	E	H_{max}
Campeche	2 158	34	4.43	2.02a	0.0009	0.57	3.53
Quintana Roo	2 524	27	3.20	1.76b	0.0008	0.53	3.29
Yucatan	5 987	34	3.80	1.71b	0.0003	0.48	3.53
Biosphere Reserve							
Calakmul	515	29	4.48	2.65a	0.0019	0.79	3.37
Sian Ka'an	1 161	24	3.25	2.06b	0.0013	0.65	3.18
Ría Celestún	3 608	24	2.80	1.52c	0.0005	0.48	3.18
Los Petenes	1 100	18	2.43	1.44c	0.0013	0.50	2.89
Ría Lagartos	2 026	20	2.50	1.35d	0.0008	0.45	2.99

N: number of individuals; S: species richness; D_{MG} : Margalef's species richness index; H' : Shannon diversity index; E: Evenness; and H_{max} : maximum diversity. The different letters indicate statistically significant differences in H' values (Randomization test, $p < 0.001$).

Table II
SPECIES OF CULICIDAE AND THEIR ABUNDANCE IN THE THREE STATES OF THE YUCATAN PENINSULA. COLLECTION PERIODS: APRIL 26 TO MAY 28, 2016; OCTOBER 8 TO NOVEMBER 7, 2016; FEBRUARY 1 TO MARCH 2, 2017, AND JUNE 7 TO JULY 5, 2017

Species	Campeche	Quintana Roo	Yucatan	Total	$\log N^A$
<i>Culex tritaeniorhynchus</i>	0	0	1	1	0.00
<i>Mansonia indubitans</i>	1	0	0	1	0.00
<i>Mansonia titillans</i>	1	0	0	1	0.00
<i>Ochlerotatus quadrivittatus</i>	1	0	0	1	0.00
<i>Psorophora champerico</i>	0	1	0	1	0.00
<i>Psorophora confinnis</i>	0	0	1	1	0.00
<i>Trichoprosopon digitatum</i>	0	1	0	1	0.00
<i>Uranotaenia lowii</i>	0	0	1	1	0.00
<i>Anopheles apicimacula</i>	2	0	0	2	0.30
<i>Coquillettidia nigricans</i>	2	0	0	2	0.30
<i>Psorophora ciliipes</i>	0	2	0	2	0.30
<i>Aedes tormentor</i>	0	0	3	3	0.48
<i>Anopheles punctipennis</i>	0	0	3	3	0.48
<i>Culex corniger</i>	2	0	2	4	0.60
<i>Culex corniger/lactator</i>	4	0	0	4	0.60
<i>Culex theobaldi</i>	0	4	0	4	0.60
<i>Psorophora ciliata</i>	2	0	2	4	0.60
<i>Culex erythrorhynchus</i>	0	0	5	5	0.70
<i>Ochlerotatus epactius</i>	6	0	0	6	0.78
<i>Toxorhynchites moctezuma</i>	1	3	2	6	0.78
<i>Psorophora lineata</i>	0	7	0	7	0.85
<i>Aedes bimaculatus</i>	1	0	7	8	0.90
<i>Ochlerotatus euplocamus</i>	0	8	0	8	0.90
<i>Sabethes chloropterus</i>	3	5	0	8	0.90
<i>Haemagogus equinus</i>	2	6	2	10	1.00
<i>Aedes terreus</i>	12	0	0	12	1.08
<i>Uranotaenia socialis</i>	16	0	0	16	1.20
<i>Ochlerotatus sollicitans</i>	0	0	17	17	1.23
<i>Psorophora albipes</i>	17	0	0	17	1.23
<i>Anopheles pseudopunctipennis</i>	0	0	20	20	1.30
<i>Culex interrogator</i>	0	0	25	25	1.40
<i>Wyeomyia celatophthalma</i>	8	22	0	30	1.48
<i>Mansonia dyari</i>	5	4	26	35	1.54
<i>Deinocerites cancer</i>	0	4	51	55	1.74
<i>Limatus durhamii</i>	39	19	1	59	1.77
<i>Psorophora cyanescens</i>	27	8	25	60	1.78

(continúa...)

(continuación)

<i>Psorophora ferox</i>	37	21	2	60	1.78
<i>Culex erraticus</i>	7	59	7	73	1.86
<i>Ochlerotatus serratus</i>	50	2	22	74	1.87
<i>Anopheles vestitipennis</i>	27	17	32	76	1.88
<i>Aedes cozumelensis</i>	75	10	2	87	1.94
<i>Anopheles albimanus</i>	10	60	38	108	2.03
<i>Culex coronator</i>	72	0	54	126	2.10
<i>Ochlerotatus scapularis</i>	50	86	1	137	2.14
<i>Culex taeniopus</i>	25	0	132	157	2.20
<i>Aedes albopictus</i>	0	273	16	289	2.46
<i>Coquillettidia venezuelensis</i>	19	56	348	423	2.63
<i>Anopheles crucians</i>	2	0	488	490	2.69
<i>Culex quinquefasciatus</i>	222	124	151	497	2.70
<i>Culex nigripalpus</i>	21	26	599	646	2.81
<i>Aedes aegypti</i>	761	1 284	742	2 787	3.45
<i>Aedes taeniorhynchus</i>	628	412	3 159	4 199	3.62

Log N= 0-1: rare species; log N= >1-2: common species; log N= >2: abundant species.

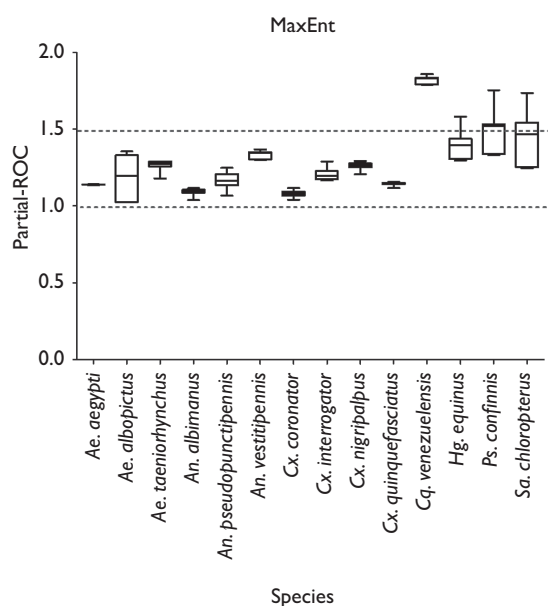


FIGURE 1. PARTIAL-ROC FOR 14 SPECIES OF CULICIDS OF MEDICAL IMPORTANCE USING MAXENT. COLLECTION PERIODS: APRIL 26 TO MAY 28, 2016; OCTOBER 8 TO NOVEMBER 7, 2016; FEBRUARY 1 TO MARCH 2, 2017, AND JUNE 7 TO JULY 5, 2017

was *Cq. venezuelensis* (figure 3). Only seven species exhibited more than 50% risk of vector contact with the rural population, compared to 11 species above 50% for the urban population. The species *An. pseudopunctipennis*, *An. albimanus*, and *Ae. albopictus* implied higher risks for the rural population compared to the urban population (figure 3).

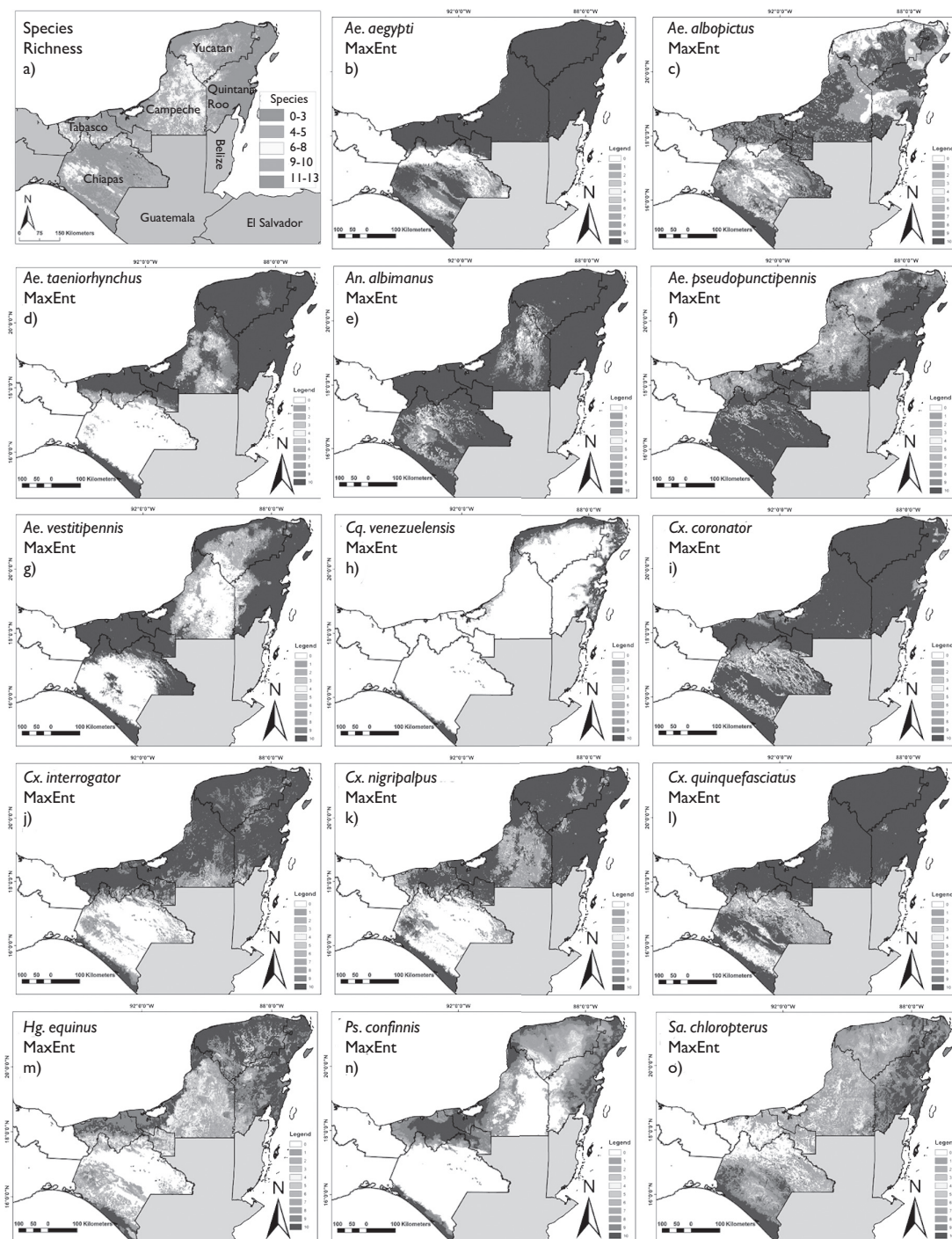
Discussion

A total of 52 species were registered for the YP. The state with the greatest diversity of species was Campeche, particularly the Biosphere Reserve of Calakmul.

Worldwide, the Culicidae family includes 113 genera and 3 564 species. The mosquito fauna of Mexico comprises 20 genera and between 225-247 species.^{5,25} In the present study, 75% (N=15) of the genera of mosquitoes reported for Mexico and 21-23% (N=52) of the species were identified in the fauna of the YP. In a previous study in eight states of the Mexican Pacific coast, 15 genera and 74 species of culicids were reported;²⁶ these amount to the same percentage of genera reported in the present study and 30% more species. However, the results of the present study correspond only to three states of the Mexican republic.

Previous studies on culicids in the YP reported 13 genera and 41 species for Quintana Roo,⁷ while in the present study 14 genera and 27 species were recorded. For the state of Yucatan, Ibáñez-Bernal and colleagues⁵ reported 45 species, whereas Ibáñez-Bernal⁶ registered 11 genera and 30 species for Yucatan. Nájera-Vázquez and colleagues²⁷ registered eight genera and 19 species of mosquitoes for the state of Yucatan; Zapata-Peniche and colleagues²⁸ reported four genera and 12 species in the city of Mérida, Yucatan; Dzul-Manzanilla and colleagues²⁹ registered nine genera and 22 species for the state of Yucatan; and recently, Baak-Baak and colleagues¹⁵ reported seven genera and 27 species for the same state. In the present study, the state of Yucatan was found to include 11 genera and 34 species. There have been relatively few studies in the state of Campeche, reporting 50-61 species of mosquitoes,^{5,30} while the present study registers 14 genera and 34 species in the state of Campeche.

Of the list of mosquitoes registered in the present study, at least 14 have been reported as vectors of human diseases, among which *Ae. aegypti* and *Ae. albopictus* have particular importance as vectors of dengue, Zika, chikungunya, yellow fever, and the Mayaro virus.^{31,32} The mosquitoes *An. albimanus*, *An. pseudopunctipennis*, *An. vestitipennis*, *An. crucians* and *An. punctipennis* are malaria vectors;³³ *Ps. confinnis* is a vector of Venezuelan equine encephalitis (VEE);³⁴ *Mansonia titillans* is a vec-



Collection periods: April 26 to May 28, 2016; October 8 to November 7, 2016; February 1 to March 2, 2017, and June 7 to July 5, 2017.

FIGURE 2. SPECIES RICHNESS AND ECOLOGICAL NICHE MODELING OF 14 SPECIES OF MEDICAL IMPORTANCE IN THE YUCATAN PENINSULA, MEXICO. A) SPECIES RICHNESS, B) *AE. AEGYPTI*, C) *AE. ALBOPICTUS*, D) *AE. TAENIORHYNCHUS*, E) *AN. ALBIMANUS*, F) *AN. PSEUDOPUNCTIPENNIS*, G) *AN. VESTITIPENNIS*, H) *CQ. VENEZUELENSIS*, I) *CX. CORONATOR*, J) *CX. INTERROGATOR*, K) *CX. NIGRIPALPUS*, L) *CX. QUINQUEFASCIATUS*, M) *HG. EQUINUS*, N) *PS. CONFINNIS*, AND O) *SA. CHLOROPTERUS*.

tor of VEE and lymphatic filariasis; *Sa. chloropterus* and *Hg. equinus* are vectors of the yellow fever virus; *Ae. taeniorhynchus* is a vector of VEE;³⁴ *Cx. quinquefasciatus* is a vector of lymphatic filariasis, West Nile Virus (WNV) and St. Louis Encephalitis Virus (SLE);³⁵ and *Cx. nigripalpus* is a vector of Eastern equine encephalitis (EEE), SLE and WNV.³⁶

The values of diversity for the culicid species reported in the present study ranged between 1.35 and 2.65, which are close to the values of 1.93-2.66 reported for the eight states of the Pacific coast of Mexico.²⁶

Ecological niche models (ENM) have been implemented in order to understand the cycles of transmission of various diseases, as well as to predict areas susceptible to invasion by exotic species and areas of population at risk of contact with vectors, among other issues.^{9,18,23} The niche model of *Ae. albopictus* in the YP, Tabasco and Chiapas indicate that these areas are very similar in suitability (potential distribution) for these vectors, compared to the niche models presented by Campbell and colleagues⁹ and Pech-May and colleagues.²⁴

In partial species distribution models, a limited number of points of occurrence can be used to generate a partial picture of the distribution.³⁷ Therefore, by including a greater number of points, or expanding the distribution area, we can determine the distribution of these species at a finer scale, although such inferences

must be interpreted with care. However, in the present study, we were able to define zones of unsuitability in the YP, Tabasco and Chiapas. Therefore, having clearly defined objectives and spatial scale should improve our interpretation of the results. In the case, of *Ae. albopictus*, we predicted the presence of the vector across all the YP with high probability. We also generated a high resolution map of the distribution of *Ae. albopictus* in the region (figure 2c). In addition, the ENM predicted the presence of the vector in Campeche. Therefore, we may expect that this vector will be registered in the state of Campeche in the near future.

A key aspect of public health studies involves the estimation of the number of people who are at risk of disease (figure 3). In urban communities, most mosquitoes (11 out of 14 species) exhibited more than a 50% risk of contact with human populations (figure 3). In rural communities, although there is still a risk of contact for *Ae. aegypti*, *Cx. quinquefasciatus*, *An. vestitipennis*, *Ae. albopictus*, *An. albimanus*, and *An. pseudopunctipennis*, it is important to note that there seems to be a more significant possibility of exposure to *Ae. albopictus*, *An. albimanus* and *An. pseudopunctipennis* in rural areas than in urban areas. In the case of *Ae. aegypti* and *Cx. quinquefasciatus*, our results are similar to those of Baak-Baak and colleagues,¹⁶ however, for *Cx. coronator*, our results represent an improved estimate of the risk of contact with vectors in the region.

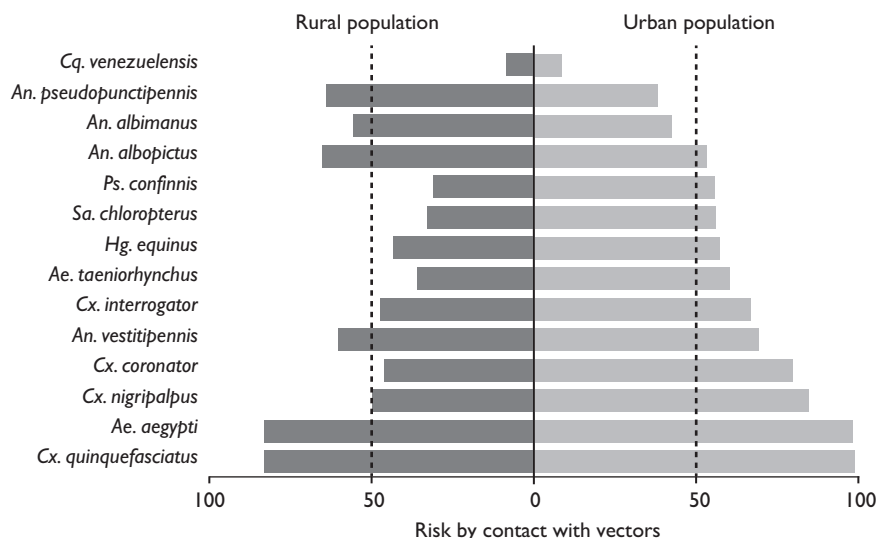


FIGURE 3. RISK OF CONTACT WITH VECTOR BY MEDICAL IMPORTANCE IN THE YUCATAN PENINSULA, TABASCO AND CHIAPAS. THE RISK OF CONTACT WAS ESTIMATED AS A PERCENTAGE. RURAL POPULATION (COMMUNITIES WITH <10 000 INHABITANTS) AND URBAN POPULATION (COMMUNITIES WITH >10 000 INHABITANTS). COLLECTION PERIODS: APRIL 26 TO MAY 28, 2016; OCTOBER 8 TO NOVEMBER 7, 2016; FEBRUARY 1 TO MARCH 2, 2017, AND JUNE 7 TO JULY 5, 2017

In conclusion, this study represents the most recent mosquito inventory for the YP, and contributes to understanding the diversity and current distribution of mosquito species in Mexico, particularly for species of medical and veterinary importance. Such information should prove valuable for monitoring changes in species abundance, community composition and vector distribution that can be incorporated in mathematical and statistical models, and assist in the elaboration of successful programs of surveillance and control of vector populations. Of the species reported, the presence of *Ae. albopictus* in Yucatan is relevant,²⁴ since it is considered to be an invasive species and a vector of numerous diseases. The individuals and species registered during the present study were cataloged in the databases of mosquitoes of Mexico's National System for Biodiversity Information (SNIB-Conabio), which are available for public consultation.

Funding

The study was funded by the Conabio project LI040. This research was supported by a grant (LI040) from Conabio Mexico.

Acknowledgements

We thank Trevor Williams for the revision of the manuscript, and Armando Elizondo-Quiroga, for his taxonomic assistance. Miguel Muñoz Reyes, José Luis Aguilar Rodríguez, Martín Vázquez Castillo, Rafael Ángel Avendaño Rabiella, Eufonio Díaz Espinosa and Magdali Agustín Damián provided technical assistance. The research proposal was approved by the Ethics Committee (CI-1277, 28/01/15) and the Research Commission (CI-1277, 04/02/15) of the INSP.

Declaration of conflict of interests. The authors declare that they have no conflict of interests.

References

1. Mike Service. Medical entomology for students. 5th edition. London: Cambridge University Press, 2012.
2. Narro-Robles J, Gómez-Dantés H. El dengue en México: un problema prioritario de salud pública. *Salud Publica Mex.* 1995;37(suppl 1):12-20 [cited February 2, 2019]. Available from: <http://saludpublica.mx/index.php/spm/article/view/4560/4408>
3. Wiwanitkit V. Concurrent malaria and dengue infection: a brief summary and comment. *Asian Pac Trop Biomed.* 2011;1(4):326-7. [https://doi.org/10.1016/S2221-1691\(11\)60053-1](https://doi.org/10.1016/S2221-1691(11)60053-1)
4. Ibáñez-Bernal S, Canul O, Camal JF. Los dípteros de la reserva de la biosfera de Sian Ka'an, Quintana Roo, México. In: Navarro D y Robinson JG (eds.). *Diversidad Biológica de Sian Ka'an, Quintana Roo, México.* Gainesville, EUA: Centro de Investigaciones de Quintana Roo/Program for Studies in Tropical Conservation, 1990:305-16.
5. Ibáñez-Bernal S, Strickman D, Martínez-Campos C. Culicidae (Diptera). In: Llorente-Bousquets J, García AN, González-Soriano E (eds.). *Biodiversidad, taxonomía y biogeografía de artrópodos de México: hacia una síntesis de su conocimiento.* Vol. 1. Ciudad de México: Universidad Nacional Autónoma de México, 1996:591-602.
6. Ibáñez-Bernal S. Los dípteros hematófagos y taxa relacionados de dos áreas protegidas del estado de Yucatán, México (Insecta). Informe final del proyecto G011. Mexico: Instituto Nacional de Diagnóstico y Referencia Epidemiológicos/Laboratorio de Entomología e Insectario, 1998.
7. Ortega-Morales AI, Mis-Ávila P, Elizondo-Quiroga A, Harbach RE, Siller-Rodríguez QK, Fernández-Salas I. The mosquitoes of Quintana Roo state, Mexico (Diptera: Culicidae). *Acta Zool Mex.* 2010;26(1):33-46. [cited February 2, 2019] Available from: http://www.scielo.org.mx/scielo.php?script=sci_arttext&pid=S0065-17372010000100004
8. Mis-Ávila CP, Canul-Amaro GJ, Domínguez-Galera MA. Determinación taxonómica de mosquitos (Culicinae: Culicidae) de la zona urbana de Chetumal, Quintana Roo. *Revista Salud Quintana Roo.* 2013;6(23):8-13 [cited February 2, 2019]. Available from: <https://salud.qroo.gob.mx/revista/revistas/23/2.pdf>
9. Campbell LP, Luther C, Moo-Llanes D, Ramsey JM, Danis-Lozano R, Peterson AT. Climate change influences on global distributions of dengue and chikungunya virus vectors. *Philos Trans R Soc B Biol Sci.* 2015;370(1665):20140135. <https://doi.org/10.1098/rstb.2014.0135>
10. Casas-Martínez M, Orozco-Bonilla A, Muñoz-Reyes M, Ulloa-García A, Bond JG, Valle-Mora J, et al. A new tent trap for monitoring the daily activity of *Aedes aegypti* and *Aedes albopictus*. *J Vector Ecol.* 2013;38(2):277-88. <https://doi.org/10.1111/j.1948-7134.2013.12041.x>
11. Wilkerson RC, Strickman D, Fernández-Salas I, Ibáñez-Bernal S, Liwak TR. Clave ilustrada para la identificación de las hembras de mosquitos anofelinos de México y América Central. Mexico: Centro de Investigación de Paludismo, Secretaría de Salud [Center for Research on Malaria. Department of Health], 1993.
12. Savage HM, Smith GC. *Aedes albopictus* y *Aedes aegypti* en las Américas: implicaciones para la transmisión de arbovirus e identificación de hembras adultas dañadas. *Bol Oficina Sanit Panam.* 1995;118(6):473-87 [cited February 2, 2019]. Available from: <https://iris.paho.org/bitstream/handle/10665.2/15585/v118n6p473.pdf?sequence=1&isAllowed=y>
13. Magurran AE. *Measuring biological diversity.* Oxford, UK: Blackwell Publishing, 2004.
14. Solow AR. A simple test for change in community structure. *J Anim Ecol.* 1993;62(1):191-3. <https://doi.org/10.2307/5493>
15. Baak-Baak CM, Cigarroa-Toledo N, Arana-Guardia R, Chi-Chim WA, Chan-Orilla JA, Machain-Williams C, et al. Mosquito fauna associated with *Aedes aegypti* (Diptera: Culicidae) in Yucatán State of southeastern México, and checklist with new records. *Fla Entomol.* 2016;99(4):703-09. <https://doi.org/10.1653/024.099.0420>
16. Baak-Baak CM, Moo-Llanes DA, Cigarroa-Toledo N, Puerto FI, Machain-Williams C, Reyes-Solis G, et al. Ecological niche model for predicting distribution of diseases-vector mosquitoes in Yucatan State, México. *J Med Entomol.* 2017;54(4):854-61. <https://doi.org/10.1093/jme/tjw243>
17. Barve N, Barve V, Jiménez-Valverde A, Lira-Noriega A, Maher SP, Peterson AT, et al. The crucial role of the accessible area in ecological niche modeling and species distribution modeling. *Ecol Model.* 2011;222(11):1810-19. <https://doi.org/10.1016/j.ecolmodel.2011.02.011>
18. Moo-Llanes DA, Ibarra-Cerdeña CN, Rebollar-Téllez EA, Ibáñez-Bernal S, González C, Ramsey JM. Current and future niche of North and Central American sand flies (Diptera: Psychodidae) in climate change scenarios. *PLoS Negl Trop Dis.* 2013;7(9):e2421. <https://doi.org/10.1371/journal.pntd.0002421>
19. Hijmans RJ, Cameron SE, Parra LP, Jones PG, Jarvis A. Very high resolution interpolated climate surfaces for global land areas. *Int J Climatol.* 2005;25(15):1965-78. <https://doi.org/10.1002/joc.1276>

20. Phillips SJ, Anderson RP, Schapire RE. Maximum entropy modeling of species geographic distributions. *Ecol Model.* 2006;190(3-4):231-59. <https://doi.org/10.1016/j.ecolmodel.2005.03.026>
21. Moo-Llanes DA. Nicho ecológico actual y futuro de la Leishmaniasis (Kinetoplastida: Trypanosomatidae) en la región Neotropical. *Rev Biol Trop.* 2016;64(3):1237-45. <https://doi.org/10.15517/rbt.v64i3.20150>
22. Moo-Llanes DA, Pech-May A, Ibarra-Cerdeña CN, Rebollar-Téllez EA, Ramsey JM. Inferring distributional shifts of epidemiologically important North and Central American sandflies from Pleistocene to future scenarios. *Med Vet Entomol.* 2019;33(1):31-43. <https://doi.org/10.1111/mve.12326>
23. Peterson AT, Soberón J, Pearson RG, Anderson RP, Martínez-Meyer E, Nakamura M, Bastos-Araújo M. Ecological niche and geographic distributions. New Jersey: Princeton University Press, 2012.
24. Pech-May A, Moo-Llanes DA, Puerto-Ávila MB, Casas M, Danis-Lozano R, Ponce G, et al. Population genetics and ecological niche of invasive *Aedes albopictus* in México. *Acta Trop.* 2016;157:30-41. <https://doi.org/10.1016/j.actatropica.2016.01.021>
25. Darsie RF Jr. A survey and bibliography of the mosquito fauna of Mexico (Diptera: Culicidae). *J Am Mosq Control Assoc.* 1996;12(2):298-306. [cited February 2, 2019] Available from: https://www.biodiversitylibrary.org/content/part/JAMCA/JAMCA_V12_N2_P298-306.pdf
26. Bond JG, Casas-Martínez M, Quiroz-Martínez H, Novelo-Gutiérrez R, Marina CF, Ulloa A, et al. Diversity of mosquitoes and the aquatic insects associated with their oviposition sites along the Pacific coast of Mexico. *Parasites & Vectors.* 2014;7(41):1-19. <https://doi.org/10.1186/1756-3305-7-41>
27. Nájera-Vázquez R, Dzúl F, Sabido M, Tun-Ku E, Manrique-Saide P. New distribution records of mosquitoes (Diptera: Culicidae) for Yucatán, Mexico. *Entomol News.* 2004;115(4):181-90.
28. Zapata-Peniche A, Manrique-Saide P, Rebollar-Téllez EA, Che-Mendoza A, Dzúl-Manzanilla F. Identificación de larvas de mosquitos (Diptera: Culicidae) de Mérida, Yucatán, México y sus principales criaderos. *Rev Biomed.* 2007;18(1):3-17. [cited February 2, 2019] Available from: <https://www.medigraphic.com/pdfs/revbio/bio-2007/bio071b.pdf>
29. Dzúl-Manzanilla F, Manrique-Saide P, Che-Mendoza A, Rebollar-Téllez E. Mosquitos de Yucatán. In: Durán R y Méndez M (eds.). Biodiversidad y Desarrollo Humano en Yucatán. Mérida, Yucatán, Mexico: Centro de Investigación Científica de Yucatán/Programa de Pequeñas Donaciones del Fondo para el Medio Ambiente Mundial/Comisión Nacional para el Conocimiento y Uso de la Biodiversidad/Secretaría de Desarrollo Urbano y Medio Ambiente, 2010:496. [cited February 2, 2019] Available from: <https://www.cicy.mx/Documentos/CICY/Sitios/Biodiversidad/pdfs/Cap4/33%20Mosquitos%20de%20Yucatan.pdf>
30. Hernández-Rodríguez JL, Granados-Echegoyen CA, Ortega-Morales BO, Ibáñez-Bernal S, Pérez-Pacheco R, Chan-Bacab M, et al. First record of *Limatus durhamii* Theobald (Diptera: Culicidae) in Campeche, Mexico. *Fla Entomol.* 2018;101(4):712-15. <https://doi.org/10.1653/024.101.0414>
31. Fernández-Salas I, Flores-Leal A. El papel del vector *Aedes aegypti* en la epidemiología del dengue en México. *Salud Publica Mex.* 1995;37(suppl 1):45-52. [cited February 2, 2019] Available from: <http://saludpublica.mx/index.php/spm/article/view/4563/4411>
32. Wiggins K, Eastmond B, Alto BW. Transmission potential of Mayaro virus in Florida *Aedes aegypti* and *Aedes albopictus* mosquitoes. *Med Vet Entomol.* 2018;32(4):436-42. <https://doi.org/10.1111/mve.12322>
33. Manguin S. Anopheles mosquitoes – New Insights Into malaria vectors. Rijeka, Croatia: InTech, 2013.
34. Ortiz DI, Anishchenko M, Weaver SC. Susceptibility of *Psorophora confinnis* (Diptera: Culicidae) to infection with epizootic (Subtype IC) and enzootic (Subtype ID) Venezuelan Equine Encephalitis Viruses. *J Med Entomol.* 2005;42(5):857-63. <https://doi.org/10.1093/jmedent/42.5.857>
35. Samy AM, Elaagip AH, Kenawy MA, Ayres CF, Peterson AT, Soliman DE. Climate change influences on the global potential distribution of the mosquito *Culex quinquefasciatus*, vector of West Nile Virus and Lymphatic Filariasis. *PLoS ONE.* 2016;11(10):e0163863. <https://doi.org/10.1371/journal.pone.0163863>
36. Vitek CJ, Richards SL, Mores CN, Day JF, Lord CC. Arbovirus transmission by *Culex nigripalpus* in Florida, 2005. *J Med Entomol.* 2008;45(3):483-93. <https://doi.org/10.1093/jmedent/45.3.483>
37. Raes N. Partial versus full species distribution models. *Natureza & Conservação.* 2012;10(2):127-38. <https://doi.org/10.4322/natcon.2012.020>