



## New records of Saprolegniaceae isolated from rainbow trout, from their eggs, and water in a fish farm from the State of México

### Nuevos registros de Saprolegniaceae aislados de trucha arcoiris, de sus huevos y del agua en un centro acuícola del Estado de México

Ma. Teresa Vega-Ramírez<sup>1</sup>, Martha C. Moreno-Lafont<sup>1</sup>, Ricardo Valenzuela<sup>2</sup>, Roberto Cervantes-Olivares<sup>3</sup>, J. Miguel Aller-Gancedo<sup>4</sup>, Juan M. Fregeneda-Grandes<sup>4</sup>, José L. Damas-Aguilar<sup>5</sup>, Valeria García-Flores<sup>1</sup> y Rubén López-Santiago<sup>1</sup>✉

<sup>1</sup>Departamento de Inmunología, Escuela Nacional de Ciencias Biológicas, Instituto Politécnico Nacional. Plan de Ayala y Carpio s/n, Col. Santo Tomás, Delegación Miguel Hidalgo, 11340 México, D. F., México.

<sup>2</sup>Departamento de Botánica, Escuela Nacional de Ciencias Biológicas, Instituto Politécnico Nacional. Plan de Ayala y Carpio s/n, Col. Santo Tomás, Delegación Miguel Hidalgo, 11340 México, D. F., México.

<sup>3</sup>Departamento de Microbiología e Inmunología, Facultad de Medicina Veterinaria y Zootecnia, Universidad Nacional Autónoma de México. Circuito Exterior, Ciudad Universitaria. Delegación Coyoacán, 04510 México, D. F., México.

<sup>4</sup>Departamento de Sanidad Animal, Facultad de Veterinaria, Universidad de León, Campus de Vegazana. E-24071 León, España.

<sup>5</sup>Centro Acuicola El Zarco, CONAPESCA-SAGARPA, Km. 32.5 Carretera México-Toluca, Col. El Zarco, 52743 Ocoyoacac, Estado de México, México.

✉ rlslenon@gmail.com

**Resumen.** Se aislaron 10 especies de la familia Saprolegniaceae del Centro Acuicola “El Zarco”, Estado de México, obteniéndose de muestras de agua de afluentes y efluentes del Centro y de huevos y peces infectados de trucha arcoiris. De estas 10 especies, 2 pertenecen al género *Achlya* y 8 a *Saprolegnia*. Se registra *Saprolegnia ferax* por primera vez para el Estado de México. *Achlya ambisexualis*, *A. heterosexualis*, *S. australis*, *S. diclina*, *S. glomerata*, *S. parasitica*, *S. terrestris*, *S. uliginosa* y *S. unispora* son citados por primera vez para México.

**Palabras clave:** *Saprolegnia*, *Achlya*, Saprolegniales, *Cucumis melo*, saprolegniasis.

**Abstract.** Ten species of the family Saprolegniaceae were isolated from the fish farm “El Zarco”, State of México, obtained from samples of influent and effluent water of the farm and from infected eggs and individual fish of rainbow trout. Two species belong to the genus *Achlya* and 8 to *Saprolegnia*. *Saprolegnia ferax* is recorded for the first time for the State of México. *Achlya ambisexualis*, *A. heterosexualis*, *S. australis*, *S. diclinous*, *S. glomerata*, *S. parasitica*, *S. terrestris*, *S. uliginosa* and *S. unispora* are cited for the first time from Mexico.

**Key words:** *Saprolegnia*, *Achlya*, Saprolegniales, *Cucumis melo*, saprolegniasis.

## Introduction

The family *Saprolegniaceae* includes widely distributed water molds which usually behave as saprophytes on plants and animal debris, or are parasitic. The *Saprolegniaceae* are eucarpic, monoecious or dioecious organisms (Leclerc et al., 2000; Johnson et al., 2002). The main morphological characteristics are the coenocytic mycelium, 1 or 2 motile spore (planont) types, with or without gemmae; its asexual reproduction by means of monomorphic or dimorphic, biflagellate planonts, or by aplanetic spores, in terminal, subterminal,

or intercalary sporangia, and sexual reproduction consisting of morphologically distinct gametangia, the feminine called oogonia, which can be terminal, lateral, or intercalary, and the masculine called antheridia which can be androgynous, monoclinal, declinal, or exigynous, or limited to a hypogynous or hemihypogynous cell. The oospores, without periplasm, are formed from the entire content of the oogonium; 1 to many being produced; when mature, containing an oil reserve distributed within the ooplast; germinating to form mycelium directly, or to produce a hyphal segment bearing a terminal sporangium (Johnson et al., 2002). The family *Saprolegniaceae*, which is the most important family of the order Saprolegniales, contains 19 genera and about 150 species. The first classification of the taxon was

established by de Bary and Woronin in 1881, and de Bary in 1888, and this was further developed by Coker and Mathews in 1937 (*vide* Lecler et al., 2000).

One of the most relevant and widely accepted taxonomical works was done by Coker (1923), who described the Saprolegniaceae and established the genus classification based on the differentiation of asexual reproduction.

In Mexico, Céspedes and Castillo (1982) reported 18 species of the Chytridiomycetes and Oomycetes fungi. *Aphanomyces*, *Dictyuchus*, *Geolegnia*, *Leptolegnia*, and *Saprolegnia* species were isolated from soil and water from 10 different locations of 4 states in Mexico; these species were included in the class Oomycetes. The aim of this study was to detect the presence of species of Saprolegniaceae in the fish farm “El Zarco” in different substrates (eggs, fish and water) and contribute to the knowledge of fungal biodiversity in Mexico.

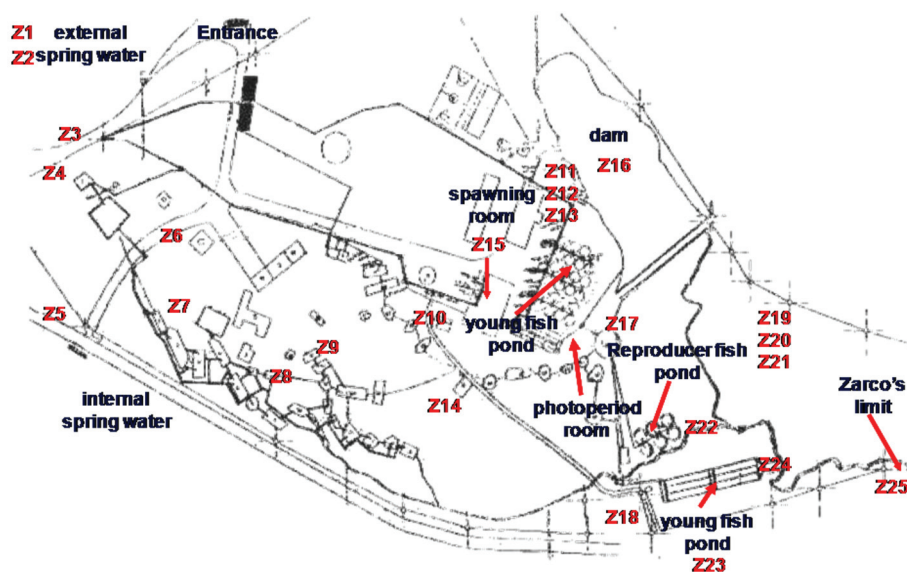
## Materials and methods

**Sampling at the fish farm.** The fish farm “El Zarco” is located at 32.5 km from Mexico City, in proximity to the National Park “La Marquesa”. Its grid reference is 19°17'58" N, 99°22'55" W. Two samples of 250 ml each were taken from water bodies in 25 different zones of the fish farm (Fig. 1). All samples were collected during the period of August 2006 to March 2008. Fishes of *O. mykiss* were sampled for the isolation of species of Saprolegniaceae. Mycelium of injured epidermis and

the skin mucus were inoculated onto agar Sabouraud and sterile water. Samples of colonized eggs were inoculated in sterile water.

**Isolation of Saprolegniaceae from water, trout's eggs and lesions.** The method described by Willoughby (1984) was adopted with some modifications (Vega-Ramírez, 2008). Briefly, 5 ml of water samples were mixed with 5 ml of sterile water, and 0.32 ml of GP culture medium (D-glucose 16.7 mM; casein digest peptone 1.3 g l<sup>-1</sup>; MgSO<sub>4</sub>·7H<sub>2</sub>O 0.5 mM; KH<sub>2</sub>PO<sub>4</sub> 10 mM; CaCl<sub>2</sub> 0.5 mM and Na<sub>2</sub>HPO<sub>4</sub> 5 mM) containing 500 mg l<sup>-1</sup> ampicillin, in 2 Petri dishes. One of them was incubated at 22° C and another at 4° C. We looked for fungal growth after 48 h of incubation. The *Saprolegnia* colonies were washed several times with sterile water, and transferred to GP culture medium containing ampicillin. The process was repeated at least 3 times, until no bacteria were detected in the culture medium. The trout's eggs and lesions were washed several times using sterile distilled water; the egg membranes with fungal mycelia were separated, washed and placed into 4 plastic Petri dishes containing 7 ml of sterile distilled water, mixed with 3 ml of GP culture medium containing 500 mg l<sup>-1</sup> ampicillin. Two of the Petri dishes were incubated at 22° C and 2 at 4° C. We observed *Saprolegnia* growth after 48 h of incubation. Water molds were washed in sterile distilled water and the Petri dishes were incubated at 22° C and 2 more at 4° C. We observed growth after 48 h of incubation.

**Pure cultures.** These were obtained and maintained following the method described by Weston (1917).



**Figure 1.** Sampling zones in the fish farm “El Zarco”.

Briefly, spore suspension was seeded onto Sabouraud agar and a single germinated spore was transferred to fresh Sabouraud media.

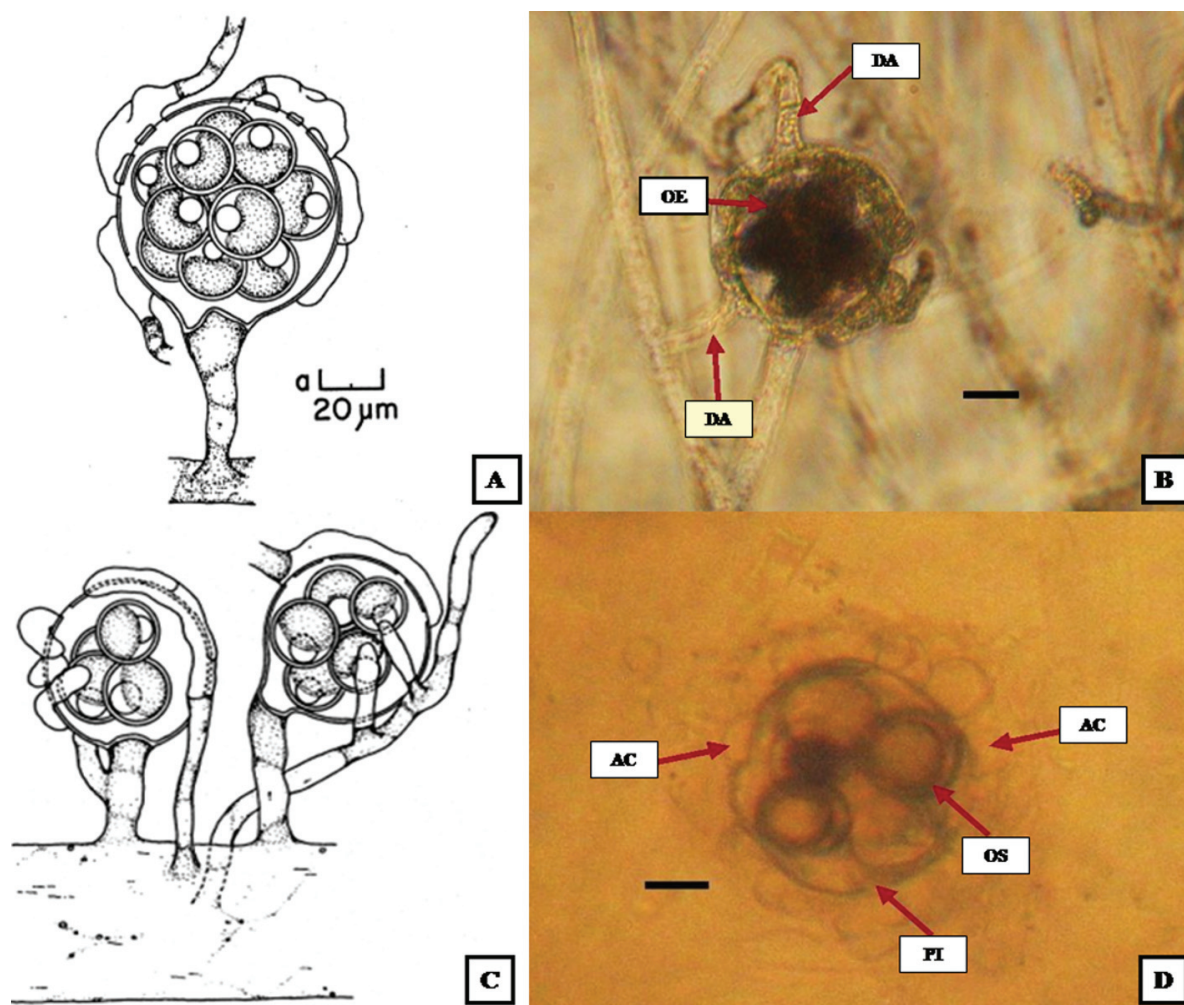
**Taxonomic classification.** Observations were carried out in an inverted microscope and identifications of sexual or asexual structures, cyst ornamentation and pattern of germination (Willoughby et al, 1984). The sporulation and development of reproductive structures (asexual and sexual) were induced by melon seeds (*Cucumis melo* L.) in water. Petri dishes were incubated at 22° C and 4° C, examined every 24 hours to assess the growth of colonies. Cultures were observed under the inverted microscope

(Motic AE31, Richmond, Canada). The images were scanned in order to document the growth of the fungus. All strains were characterized and identified according to Coker (1923), Seymour (1970) and Johnson et al. (2002).

## Descriptions

***Achlya ambisexualis*** Raper 1939; Figs. 2A, B

Mycellium of oogonial tallus dense, extensive; hyphae stout, branched. Sporangia clavate, renewed sympodially; 210-500 × 21-48 µm. Gemmae abundant cylindrical,



**Figure 2.** Culture with melon seeds and indistilled water at 4° C. A) *Achlya ambisexualis*. Mature oogonium; wall pitting pattern; digitate antheridial cell attachment; oospores eccentric (Johnson et al., 2002). B), *A. ambisexualis*. Oogonium with antheridial cells with 6 oospores. Barr= 20 µm. C), *A. heterosexualis*. Short-stalked oogonia; antheridial hyphae androgynous, monoclinal, or diclinous; antheridial cells attached laterally; oospores eccentric (Johnson et al., 2002). D), *A. heterosexualis*. Spherical oogonium, antheridial cells attached laterally, wall unpitted, oospores centric. Barr= 20 µm. DA: diclinous antheridium, OE: oospores eccentric; OS: oospores subcentric; AC: antheridial cells; PI: pitted.



occasionally irregular; terminal or intercalary, single or catenulate. Mycelium of antheridial thallus diffuse; hyphae moderately stout, branched. Sporangia sparse, cylindrical, fusiform; renewed sympodially;  $160-590 \times 16-41 \mu\text{m}$ . Gemmae cylindrical. Spores monomorphic in both thalli; discharge and behavior achlyoid; primary spore cysts  $9-14 \mu\text{m}$  in diameter; spore cluster persisting at exit orifice or disintegrating in part. Oogonia lateral or terminal; spherical or obpyriform,  $(33-50-85 (-110) \mu\text{m})$  in diameter. Oogonial wall pitted under the region of antheridial cell attachment; smooth. Oospores almost always maturing; eccentric; spherical;  $(1-10-18 (-36) \mu\text{m})$  per oogonium, and generally filling it;  $(14-18-24 (-38) \mu\text{m})$  in diameter; germination not observed. Antheridial branches arising from one hypha ("male"); long, slender, irregular, and abundantly branched; often wrapping about the oogonium and its attendant hypha; persisting. Antheridial cells compound; tubular, branched or unbranched; persisting; attached in a digitate fashion or laterally; fertilization tubes not observed.

**Taxonomic summary.** **Mexico.** State of México, fish farm "El Zarco", fishpond no. 9 (z-15). 05/FEB/2007. Vega-Ramírez Aa-15 (ENCB).

**Remarks.** *A. ambisexualis* is a dioecious species and can be distinguished by its oospheres predominantly maturing, oospores  $18-24 \mu\text{m}$  in diameter, generally 1-18 per oogonium and gemmae cylindrical in both antheridial and oogonial mycelia. *A. bisexualis* is also a dioecious species, and is differentiated by its oospheres infrequently to rarely maturing, oospores  $22-26 \mu\text{m}$  in diameter, generally 5-10 per oogonium, and gemmae in oogonial mycelia spherical to short-cylindrical and spherical to cylindrical in antheridial mycelia. *A. heterosexualis* can be a dioecious or monoecious species and it is separated from both *A. ambisexualis* and *A. bisexualis* by producing monoclinal and androgynous as well as, declinal antheridial branches. *A. ambisexualis* is distributed in Africa, China, India, British Isles, South America, Canada and USA (Johnson et al., 2002); therefore this species is cited for the first time in Mexico.

***Achlya heterosexualis*** Whiffen 1965; Figs. 2C, D

Mycelium diffuse; hyphae moderately stout, moderately branched; capable of self- or interspecific conjugation. Sporangia fusiform; renewed sympodially; sometimes with a lateral exit orifice;  $142-309 \times 23-42 \mu\text{m}$ . Spores monomorphic; discharge and behavior achlyoid; primary spore cysts  $9-11 \mu\text{m}$  in diameter. Gemmae abundant; fusiform, cylindrical; often disarticulating; terminal or intercalary, single or catenulate. Oogonia lateral or terminal, obpyriform, or subglobose;  $(66-80-130 (-152) \mu\text{m})$  in diameter. Oogonial wall pitted; smooth. Oogonial

stalks unbranched. Oospores not always maturing, but eccentric when mature; spherical; 3-18 per oogonium, and filling it or not;  $(18-20-26 (-39) \mu\text{m})$  in diameter; at germination forming a germ hypha. Antheridial branches in self-conjugating thallus declinal or androgynous; persisting. Antheridial cells simple; fertilization tubes unknown.

**Taxonomic summary.** **Mexico.** State of México, fish farm: "El Zarco", "El Zarco" limit (z-25). 05/FEB/2007. Vega-Ramírez Ah-25 (ENCB).

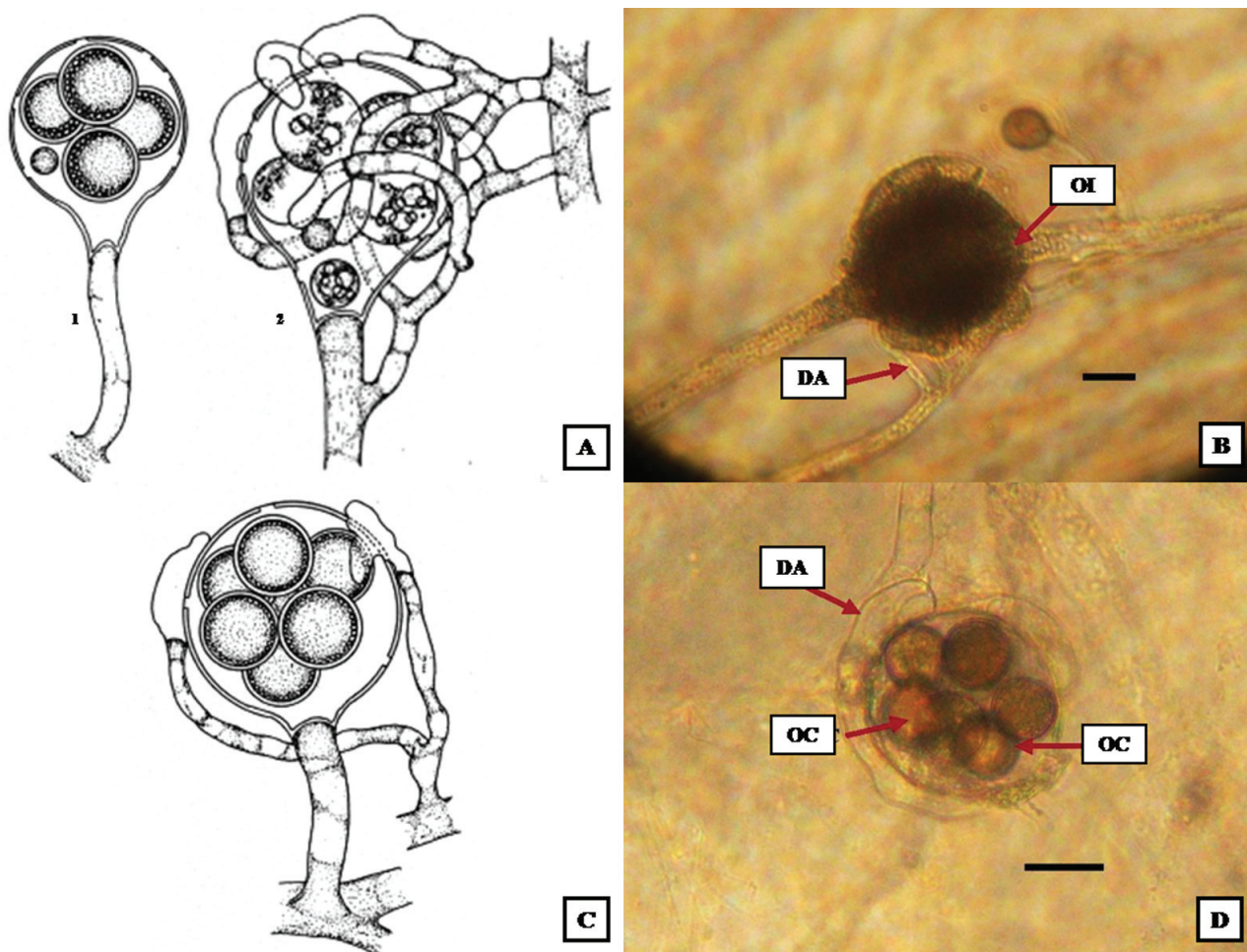
**Remarks.** *A. heterosexualis* is a dioecious or monoecious species and can be distinguished by its oospheres not always maturing, but eccentric when mature, oospores  $20-26 \mu\text{m}$  in diameter, generally 3-18 per oogonium and gemmae abundant; cylindrical; often disarticulating; terminal or intercalary, single or catenulate and produced only monoclinal and androgynous antheridial branches. In *A. heterosexualis* only the antheridial branches are cross-induced. The oogonia are self-induced, but function either with cross- or self- induced antheridial filaments. *A. ambisexualis* and *A. bisexualis* are close to *A. heterosexualis* and the differences are presented in the remarks of the first species. *A. heterosexualis* is distributed in USA (Johnson et al., 2002), and is recorded for the first time in Mexico.

***Saprolegnia australis*** R. F. Elliott 1968; Figs. 3A, B

Mycelium dense, diffuse; hyphae slender or stout. Sporangia cylindrical; renewed internally, primary ones  $250 \times 32 \mu\text{m}$ ; secondary ones usually shorter, but up to  $600 \mu\text{m}$  long. Spores dimorphic; discharge and behavior generally saprolegnoid; primary spore cysts  $11.1 \mu\text{m}$  in diameter. Gemmae abundant; clavate; terminal or intercalary, usually single. Oogonia generally terminal, lateral or intercalary, when intercalary  $59-80 \mu\text{m}$  in diameter. Oogonial wall pitted, smooth. Oogonial stalks in length; straight, curved, twisted, or irregular; unbranched. Oospores may or may not mature, or may abort; when mature, subcentric; spherical to subspherical;  $4-12 \mu\text{m}$  per oogonium, but usually not filling it;  $22-27 \mu\text{m}$  in diameter; germination not observed. Antheridial branches, predominantly declinal, monoclinal or androgynous. Antheridial cells simple or branched, persisting; tubular or attached in a digitate fashion; fertilization tubes present or absent, not persisting.

**Taxonomic summary.** **Mexico.** State of México, fish farm: "El Zarco", spring (z-10), spawning room (z-14), fishpond no.6 (z-21). 05/FEB/2007. Vega-Ramírez Sa-10, Sa-14, Sa-21 (ENCB).

**Remarks.** *S. australis* is a monoecious species and can be distinguished by its subcentric oospores (types I and III) with the refractive droplets surrounding the plasma or only



**Figure 3.** Culture with melon seeds in distilled water at 4° C. A), *Saprolegnia australis*. 1. Obpyriform oogonium; oospores subcentric; antheridia lacking. 2. Obpyriform oogonium and clasp/wrapping declinuous antheridial branch (Johnson et al., 2002). B), *S. australis*. Lateral spherical oogonium with more than 6 oospores subcentric, declinuous antheridial branch. Barr= 20 µm. C), *S. diclina*. Spherical, lateral oogonium; oospores centric (Johnson et al., 2002). D), *S. diclina* spherical oogonium, wall unpitted, oospores centric. Barr= 25 µm. DA: declinuous antheridium, OC: oospores centric, IO: immature oogonium.

partially so. The oospheres may or may not mature, or the oosphere may develop and then abort. *S. australis* and *S. diclina* have pitted and obpyriform oogonial wall, but in *S. australis* are primarily terminal and in *S. diclina* are these are predominantly lateral. *S. australis* is distributed in Canada, Japan, New Zealand and USA (Johnson et al., 2002); this species is cited for the first time in Mexico.

#### *Saprolegnia diclina* Humphrey 1892; Figs. 3C, D

Mycelium sparingly to moderately branched. Sporangia cylindrical, clavate, fusiform; straight or slightly curved; renewed internally or basipetalous succession; 75-1050 × 20-80 µm. Spores dimorphic; discharge and behavior saprolegnoid; encysted spores 9-12 µm in diameter.

Gemmae, when present, pyriform, cylindrical, clavate, or irregular; terminal or intercalary, single or catenulate. Oogonia sparse to moderately abundant, and often appearing in culture only after prolonged incubation; terminal, lateral, or intercalary, single or catenulate; spherical, or subspherical when intercalary; spherical ones (30-) 50-70 (-130) µm in diameter, subspherical or obpyriform ones 54-146 × 18-72 µm. Oogonial wall unpitted, pitted, or with pits only under the region of attachment of antheridial cells; pits sometimes inconspicuous; smooth. Oospores centric or subcentric, both types occurring in some oogonia; spherical (1-) 8-16 (>100) per oogonium, and may or may not fill it; (12-)18-26 (-44) µm in diameter; at germination forming a slender, irregular germ tube

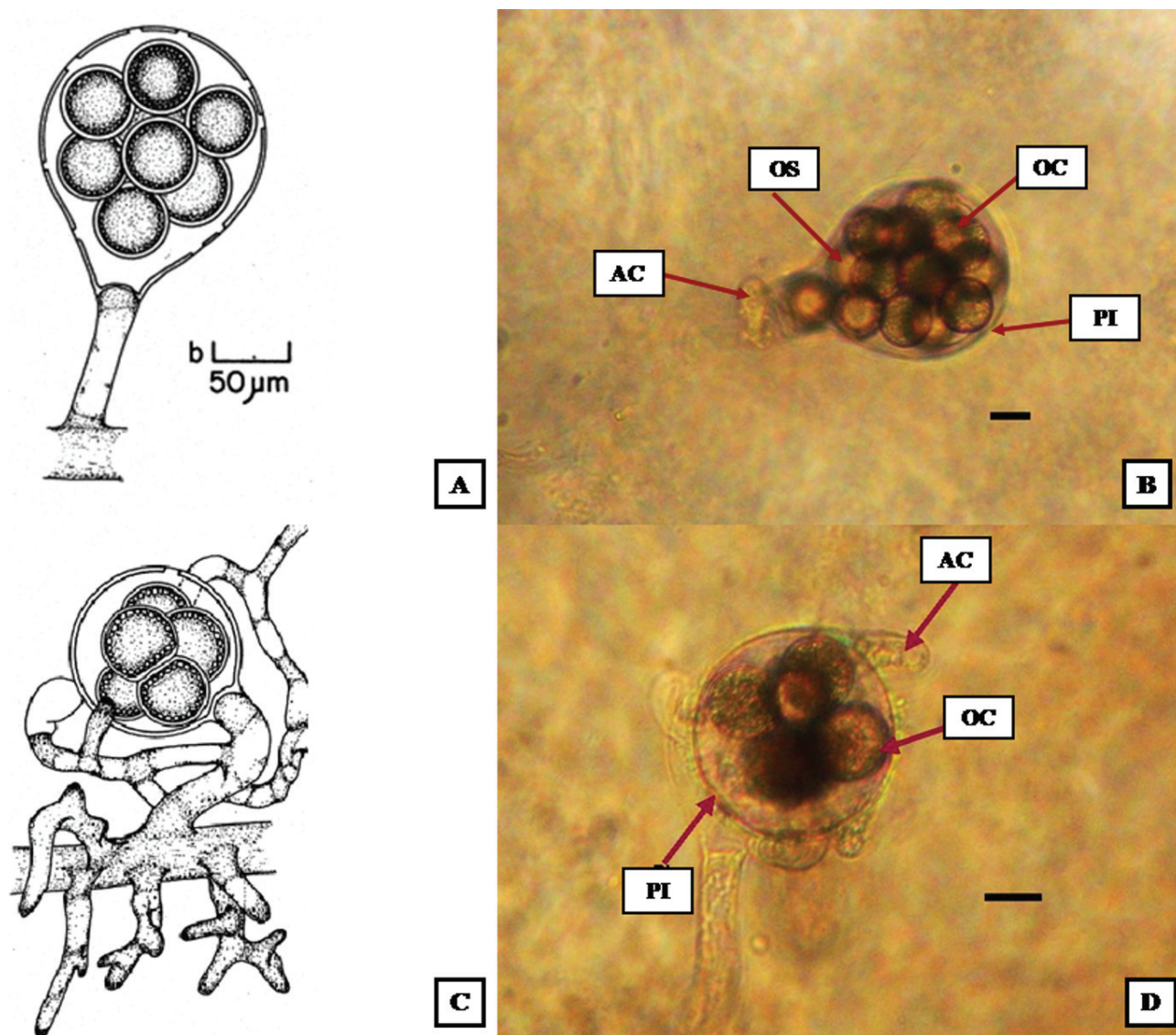


terminating in a small, cylindrical or clavate sporangium. Antheridial branches diclinous. Antheridial cells simple, very rarely compound; fertilization tubes, when present, persisting or deliquescing.

**Taxonomic summary.** **Mexico.** State of México, fish farm: “El Zarco”, spawning room (fishpond 2) (z-11), fishpond no.5 (z-20), channel (z-22), “El Zarco” limit (z-25), eggs (CH-11), trout (T-1, T-6) fish farm: “El Zarco”, water-05/FEB/2007, eggs-06/FEB/2008, trout’s lesions-09/ENE/09.

Vega-Ramírez Sd-11, Sd-20, Sd-25, CH-11, T-1, T-6 (ENCB).

**Remarks.** *S. diclina* is a monoecious species and can be distinguished by the predominance of diclinous antheridial branches, these are often very abundant and may indeed enclose the oogonia partially or fully. Like *S. ferax*, *S. diclina* produces both centric and subcentric oospores, and the 2 types may occur in the same oogonia. Milanez (cited by Johnson et al., 2002) observed subcentric



**Figure 4.** Culture with melon seeds and indistilled water at 4° C. A), *Saprolegnia ferax*. Obpyriform, pitted oogonium, centric or slightly oospores subcentric (Johnson et al., 2002). B), *S. ferax*. Obpyriform oogonium, oospores centric. Barr= 20 μm. C), *S. glomerata*. Mature oogonia; short, contorted, branched, or peg-like hyphal elements; oospores centric (Johnson et al., 2002). D), *S. glomerata*. Terminal oogonium, antheridial diclinous branch. Barr= 20 μm. OC: oospores centric; OS: oospores subcentric; AC: antheridial cells; PI: pitted.

oospores in some oogonia of his specimens of Humphrey's species. Willoughby et al. (1984) recognized 3 types of *Saprolegnia diclina* (parasitic forms from salmonids and perch, and strictly saprophytic ones) based upon the ratio of oogonium length to diameter. *S. diclina* is distributed in Belgium, British Isles, Canada, Czechoslovakia, Denmark, France, Finland, Germany, Iceland, India, Iraq, Japan, Latvia, Middle Europe, Nepal, Poland, Portugal, Republic of China, Rumania, South America, Switzerland, USA and West Indies (Johnson et al., 2002); this species is cited for the first time in Mexico.

***Saprolegnia ferax* (Gruith.) Kütz 1843; Figs. 4A, B**

Mycelium stout, hyphae moderately to sparingly branched. Sporangia cylindrical, or slightly irregular, sometimes nearly spherical; renewed internally with secondary ones nesting inside discharged primary ones, or partially emerged through orifices of empty sporangia and forming bead-like chains or cylindrical segments, or emerging fully through orifices of previously emptied sporangia; rarely renewed in a basipetalous or cymose manner;  $31\text{--}624 \times 18\text{--}67 \mu\text{m}$ . Spores dimorphic; discharge and behavior saprolegnoid; primary spore cysts  $9\text{--}12 \mu\text{m}$  in diameter. Gemmae variable in shape and position. Oogonia lateral, terminal, or intercalary, infrequently occurring in emptied sporangia or sessile;  $(28\text{--}) 60\text{--}80$  ( $\sim 194$ )  $\mu\text{m}$  in diameter. Oogonial wall generally conspicuously and abundantly pitted, rarely unpitted; smooth or rarely with 1 or 2 short, papilliform evaginations, or apiculate. Oospores centric or subcentric, spherical or ellipsoidal;  $(1\text{--}) 10\text{--}18$  ( $\sim 54$ ) per oogonium and nearly filling it,  $(12\text{--}) 22\text{--}28$  ( $\sim 44$ )  $\mu\text{m}$  in diameter; germinating by a slender germ hypha that may or may not bear a small, apical, clavate sporangium. Antheridial branches sometimes absent; when present, monoclinal or androgynous, rarely declinal; slender, may vary slightly to prominently irregular, unbranched or very sparingly branched; persisting. Antheridial cells simple; generally tubular or clavate, occasionally irregular, infrequently once-branched; usually persisting; laterally oppressed, very rarely attached apically; fertilization tubes present, not persisting.

**Taxonomic summary.** **Mexico.** State of México, fish farm: "El Zarco", spring (z-10), spawning room (z-14), fishpond no.39 (z-17), fishpond no.6 (z-21). Fish farm: "El Zarco", 05/FEB/2007. Vega-Ramírez Sf-10, Sf-14, Sf-17, Sf-21 (ENCB).

**Remarks.** *S. ferax* is a monoecious species and can be distinguished by its oospores centric or subcentric, spherical or ellipsoidal;  $10\text{--}18$  per oogonium and nearly filling it,  $22\text{--}28 \mu\text{m}$  in diameter and gemmae variable in shape and position. Generally, it is most easily recognized by reliance on a combination of predominating characters:

large, conspicuously or sparsely pitted oogonia, centric and subcentric oospores (sometimes in the same oogonium), occasional development of oogonia in discharged sporangia, and a preponderance of androgynous or monoclinal antheridial branches (when these filaments are present at all). *Saprolegnia ferax* also is associated with ulcerative dermal necrosis. *S. ferax* is distributed in Asia, Australia, Austria, Belgium, British Isles, Canada, Czechoslovakia, Denmark, France, Germany, India, Iraq, Japan, Lapland, Latvia, Middle Europe, Nepal, Netherlands, Poland, Republic of China, Romania, South America, Switzerland, USA and USSR (Johnson et al., 2002). This species is cited for the first time in the State of México.

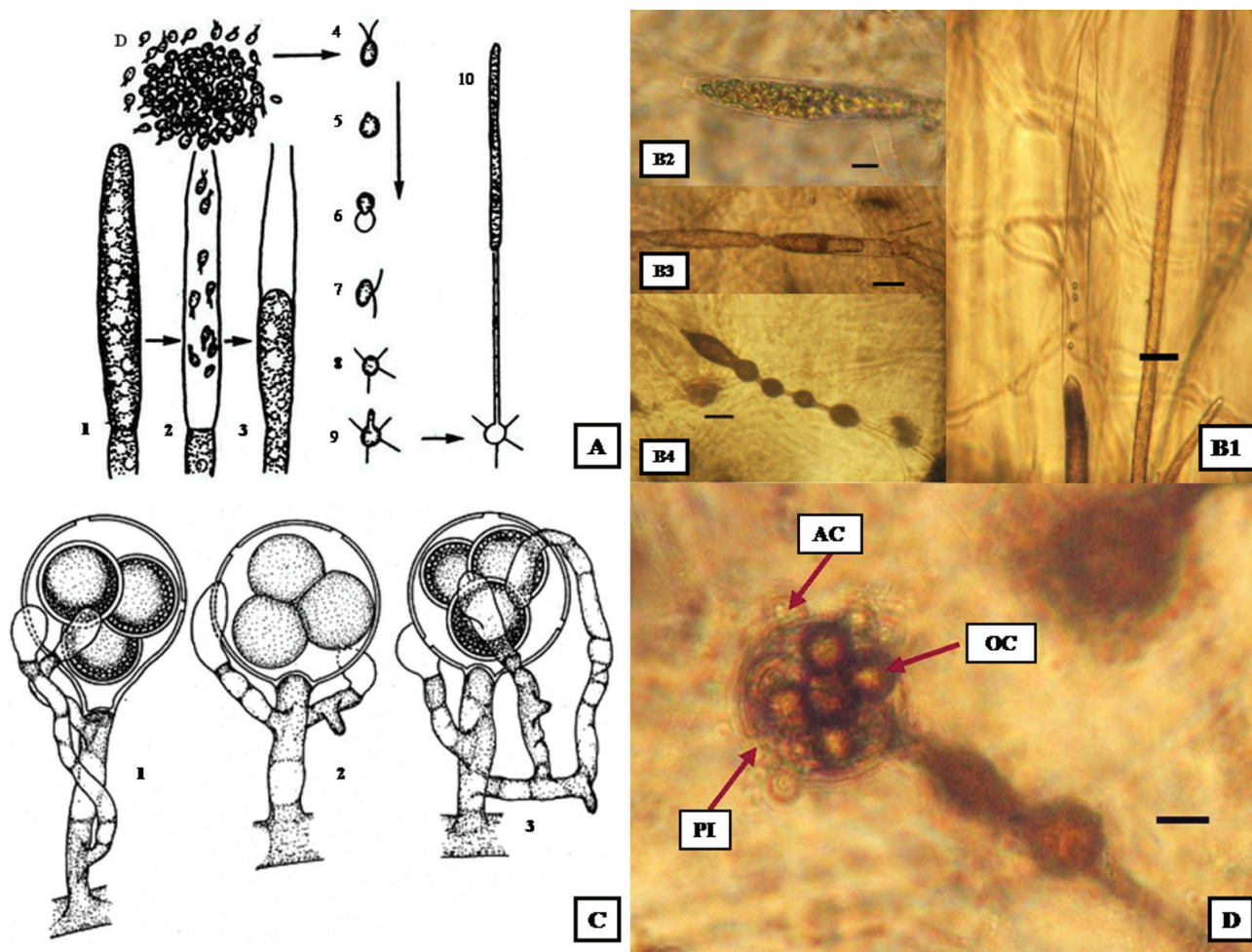
***Saprolegnia glomerata* (Tiesenh.) A. Lund 1934; Figs. 4C, D**

Mycelium delicate; some principal hyphae stout and provided with numerous short, scattered or clustered lateral, often twig-like branches. Sporangia abundant or sparse; cylindrical, fusiform, clavate, or irregular; renewed internally;  $40\text{--}220 \times 18\text{--}28 \mu\text{m}$ . Spores dimorphic; discharge and behavior saprolegnoid, rarely aplanoid; primary spore cysts  $10\text{--}14 \mu\text{m}$  in diameter. Gemmae very sparse; clavate or obpyriform; terminal, single. Oogonia spherical, obpyriform, napiform, or subspherical; lateral, occasionally terminal, rarely intercalary;  $(32\text{--}) 46\text{--}60$  ( $\sim 107$ )  $\mu\text{m}$  in diameter. Oogonial wall pitted or unpitted; smooth; stout; straight, curved, or bent; unbranched or with 1 or more short, lateral branches. Oospores centric; spherical, often nearly filling the oogonium;  $(1\text{--}) 6\text{--}16$  ( $\sim 28$ ) per oogonium;  $(18\text{--}) 23\text{--}26$  ( $\sim 30$ )  $\mu\text{m}$  in diameter; at germination producing a germ hypha. Antheridial branches androgynous or monoclinal; slender, usually contorted, twisted, or irregular and sparingly branched; persisting. Antheridial cells simple, generally tubular, occasionally clavate; fertilization tubes present, not persisting. *S. glomerata* is readily recognizable by the short, branched or unbranched, contorted, lateral (and often clustered) hyphal extensions.

**Taxonomic summary.** **Mexico.** State of México, fish farm: "El Zarco", fishpond no.6 (z-21). Fish farm: "El Zarco", 05/FEB/2007. Vega-Ramírez Sg-21 (ENCB).

**Remarks.** *S. glomerata* is a monoecious species and can be distinguished by its centric oospores; spherical, often nearly filling the oogonium,  $6\text{--}16$  per oogonium;  $23\text{--}26 \mu\text{m}$  in diameter; at germination producing a germ hypha and gemmae variable very sparse; clavate or obpyriform; terminal, single. *Saprolegnia glomerata* is readily recognizable by the short, branched or unbranched, contorted, lateral (and often clustered) hyphal extensions.





**Figure 5.** Culture with melon seeds and indistilled water at 4° C. A), *Saprolegnia parasitica*. 1, mature zoosporangia; 2, release mobile zoospores; 3, formation of secondary zoosporangia; 4, primary zoospore; 5, primary cyst. 6, germinated cyst; 7, secondary zoospore; 8, secondary cyst with "boat hooks"; 9, germinated cyst; 10, hyphal growth. B), *S. parasitica*. B1, formation of secondary sporangia. B2, mature sporangia. B3, formation of sporangia. Barr= 75 µm. B4, catenulate gemmae. C), *S. terrestris*. 1-3, oogonia with attendant androgynous antheridial branches; oospores subcentric (Johnson et al., 2002). D), *S. terrestris*. Lateral spherical oogonium, wall pitted androgynous, monoclinous and diclinous antheridial branches. Barr= 25 µm. OC: oospores centric; AC: antheridial cells; PI: pitted.

Secondary characters of recognition are the contorted, branched antheridial filaments and the short, lateral evaginations on many of the oogonial stalks. In *S. litoralis*, the hypha immediately below a terminal oogonium, may bear short, lateral branches as does *S. glomerata*, but in the former, the hypha is usually swollen at its juncture with the oogonial septum. In any case, the oospores in *S. litoralis* are occasionally subcentric, a condition not known to occur in *S. glomerata*. *S. glomerata* is distributed in British Isles, Czechoslovakia, Denmark, Germany, Iceland, India, Japan, Latvia, Poland, Switzerland and USA (Johnson et al., 2002); this species is cited for the first time in Mexico.

***Saprolegnia parasitica*** Coker 1923; Figs. 5A1-5A10.

Gemmae abundant, size and shape very variable; often in chains, mostly terminating hyphae, but sometimes intercalary. Sporangia variable, but usually bent and irregular. At times up to 0.7 mm, long, very often proliferating from the side below as in *Achlya*; when growing through others sometimes discharging spores through the side wall of the old sporangium; spores dimorphic; discharge and behavior saprolegnoid, 9-11.5 µm. Sexual reproduction not observed so far in our strains and very rarely observed in others. Our isolation developed as a parasite on fish or in water, rarely on trout eggs.

**Taxonomic summary.** **Mexico.** State of México, fish farm:



“El Zarco”, dam (z-16), fishpond no. 5 (z-20), channel (z-22), eggs (CH-11, CH-9, CH-13, CH-1), trout’s lesions (T-1, T-3, T-9, T-11, T-15, T-22). Fish farm: “El Zarco”, water-05/FEB/2007, eggs-06/FEB/08, trout’s lesions-09/ENE/09. Vega-Ramírez Sp-16, Sp-20, Sp-22, CH-11, CH-9, CH-13, CH-1, T-1, T-3, T-9, T-11, T-15, T-22 (ENCB).

**Remarks.** *S. parasitica* can be distinguished by gemmae abundant, size and shape very variable; often in chains, mostly terminating hyphae; but sometimes intercalary. Sporangia usually bent and irregular, at times up to 700 µm long with rounded ends, containing the zoospores (9-11.5 µm). The isolates obtained from lesions of live rainbow trout with characteristic bundles of hairs and retracted germination pattern. Sexual reproduction not observed. *S. parasitica* is distributed in Japan, United Kingdom, Brazil, Netherlands and Russian Federation (Global Biodiversity Information Facility, 2012); this species is cited for the first time in Mexico.

***Saprolegnia terrestris*** Cookson ex R. L. Seym. 1970; Figs. 5C, D

Hyphae slender, sparingly branched. Sporangia fusiform, obpyriform, or clavate, frequently spherical, often irregular and contorted; renewed internally, by cymose branching, or in basipetalous succession; 60-400 × 16-48 µm. Spores dimorphic; discharge and behavior saprolegnoid; primary spore cysts 6-11 µm in diameter. Gemmae, when present, fusiform or obpyriform, infrequently conspicuously irregular or branched; terminal or intercalary. Oogonia lateral or terminal, infrequently intercalary; spherical or obpyriform, sometimes oval or apiculate, (35-) 60-65 (91) µm in diameter, inclusive of papillae, if any. Oogonial wall pitted or unpitted; smooth or occasionally very sparsely papillate. Oospores subcentric; spherical or ellipsoidal; (1-) 2-11(-18) per oogonium, and nearly filling it; (20-) 24-32 (-41) µm in diameter; germination not observed. Antheridial branches androgynous and sometimes arising close to the oogonial septum, or infrequently monoclinal; stout or delicate, irregular, infrequently branched; persisting. Antheridial cells simple; generally clavate; not persisting; apically or laterally appressed; fertilization tubes sometimes present, not persisting.

**Taxonomic summary.** **Mexico.** State of México, fish farm: “El Zarco”, fishpond no.9 (z-15). Fish farm “El Zarco”, 05/FEB/2007. Vega-Ramírez St-15 (ENCB).

**Remarks.** *S. terrestris* is a monoecious species and can be distinguished by oospores subcentric 2-11 per oogonium and 24-32 µm in diameter. Like *Saprolegnia litoralis*, *S. terrestris* commonly has androgynous antheridial branches, and the general configuration of the laterally produced

sexual apparatus in both is very similar. The oospores of *S. litoralis* are generally slightly larger than those of *S. terrestris*, but the latter usually has subcentricones while those of the former are consistently centric. *S. terrestris* distributed in Australia, British Isles, Canada, Iceland, Iraq, New Zealand and Republic of China (Johnson et al., 2002); this species is cited for the first time in Mexico.

***Saprolegnia uliginosa*** Johannes 1950; Figs. 6A, B

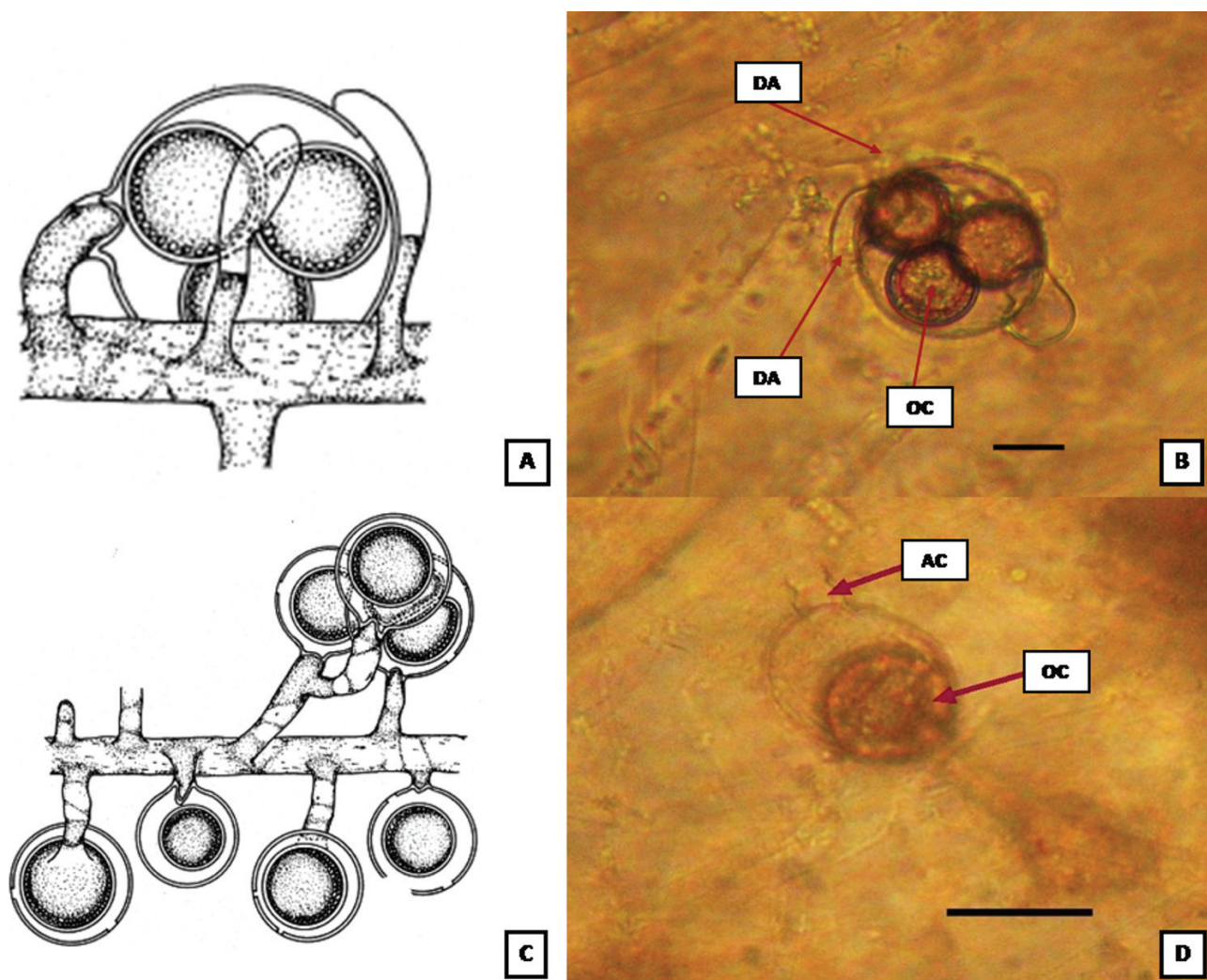
Mycelium moderately dense, extensive; hyphae slender, flaccid. Sporangia clavate, cylindrical or fusiform, sometimes irregular, renewed internally, rarely in basipetalous succession; 108-266 × 12-42 µm. Spores dimorphic; discharge and behavior saprolegnoid; primary and secondary spore cysts 9-12 µm in diameter. Gemmae sparse; spherical, obpyriform, cylindrical, fusiform, or irregular; terminal or intercalary, single or catenulate. Oogonia sparse or abundant; lateral, rarely terminal, occasionally intercalary; spherical, infrequently napiform or obpyriform; (32-) 60-68 (-91) µm in diameter. Oogonial wall pitted under the region of attachment of antheridial cells; smooth. Oospores centric, rarely subcentric; spherical; (2-) 5-7 (-25) per oogonium, and nearly filling it; (21-) 25-33(-36) µm in diameter; germination not observed. Antheridial branches predominantly monoclinal, and arising very near the oogonial stalk; infrequently androgynous; rarely diclinal; slender, slightly irregular, occasionally producing 1 or 2 short, lateral branches; persisting. Antheridial cells simple; generally tubular, straight or curved, occasionally faintly cylindro-clavate; laterally appressed, persisting; fertilization tubes present, not persisting.

**Taxonomic summary.** **Mexico.** State of México, fish farm: “El Zarco”, fishpond no.39 (z-17). Fish farm: “El Zarco”, 05/FEB/2007. Vega-Ramírez Su-17 (ENCB).

**Remarks.** *S. uliginosa* is a monoecious species and can be distinguished by oospores centric, 5-7 per oogonium, and nearly filling it; 25-33 µm in diameter; germination not observed. Like *Saprolegnia turfosa*, *S. uliginosa* usually has spherical oogonia borne laterally on short stalks and containing predominantly centric oospores. The similarity between these 2 species does not go beyond these features since the antheridial branches of *S. uliginosa* generally are monoclinal whereas androgynous ones are clearly predominate in *S. turfosa*. *S. uliginosa* is distributed in Germany, Iceland, India and USA (Johnson et al., 2002); this species is cited for the first time in Mexico.

***Saprolegnia unispora*** (Coker and Couch) R. L. Seym., 1970; Figs. 6C, D

Mycelium extensive; hyphae stout, sparingly branched. Sporangia clavate, fusiform, pyriform, cylindrical, or



**Figure 6.** Culture with melon seeds and indistilled water at 4° C. A), *S. uliginosa*. Oogonia with oospores centric; monoclinous antheridial branches (Johnson et al., 2002). B), *S. uliginosa*. Spherical oogonium with 5 centric oospores. Barr= 20 µm. C), *S. unispora*. Cluster of oogonia; antheridial components lacking; variations in oogonial stalk length (Johnson et al., 2002). D), *S. unispora*. Oogonium with 1 oospore, without antheridial branches. Barr= 20 µm. DA: diclinous antheridium, OC: oospores centric, AC: antheridial cells.

subspherical basally and attenuated apically; often slightly irregular or curved; renewed internally or in a cymose fashion, rarely sympodially; 88-317 × 21-127 µm. Spores dimorphic, or rarely monomorphic; discharge and behavior saprolegnoid, rarely dictyucoid; primary spore cysts 10-12 µm in diameter. Gemmae abundant, fusiform, pyriform, obpyriform, cylindrical, spherical, subspherical, or irregular; terminal or intercalary; single or catenulate. Oogonia lateral, occasionally terminal or sessile, rarely intercalary; frequently clustered on the hyphae or arranged in a sympodially branched glomerulus; spherical or obpyriform, occasionally subspherical, oval, or broadly

clavate, very rarely angular, sometimes cylindrical (in old sporangia); (18-) 45-55 (-91) µm in diameter, inclusive of wall ornamentations. Oogonial wall pitted or unpitted; smooth or very rarely with 1 to a few short, inconspicuous broad papillae, or a single apiculus. Oogonial stalks (1/8-) 1/2 -11/4 (-3) times the diameter of the oogonium, in length; stout, straight or curved, sometimes slightly irregular; unbranched, branched, or forming a glomerulus. Oospores centric or subcentric; spherical or compressed at one side, or ellipsoidal; 1-2 (-4) per oogonium, and generally not filling it; (16-) 32-38 (-43) µm in diameter; germination not observed. Antheridial apparatus absent. *Saprolegnia*

**Table 1.** Saprolegniaceae isolated in fish farm “El Zarco”

Species	Frequency		Source
<i>Achlya ambisexualis</i>	2/50	4%	Water
<i>A.heterosexualis</i>	2/50	4%	Water
<i>Saprolegnia australis</i>	6/50	12%	Water
<i>S. diclina</i>	8/50	16%	Water
<i>S. ferax</i>	6/10	60%	Eggs
<i>S. glomerata</i>	8/50	16%	Water
	2/50	4%	Water
<i>S. parasitica</i>	6/50	12%	Water
	26/28	92.8%	Trout’s lesions
	02/10	20%	Eggs
<i>S. terrestris</i>	02/50	4%	Water
<i>S. uliginosa</i>	02/50	4%	Water
<i>S. unispora</i>	02/50	4%	Water
Another water molds	16/50	32%	Water
	07/73	9.6%	Skin mucus
No development	16/50	32%	Water
	02/28	7%	Trout’s lesions
	66/73	90.4%	Skin mucus
	02/10	20%	Eggs

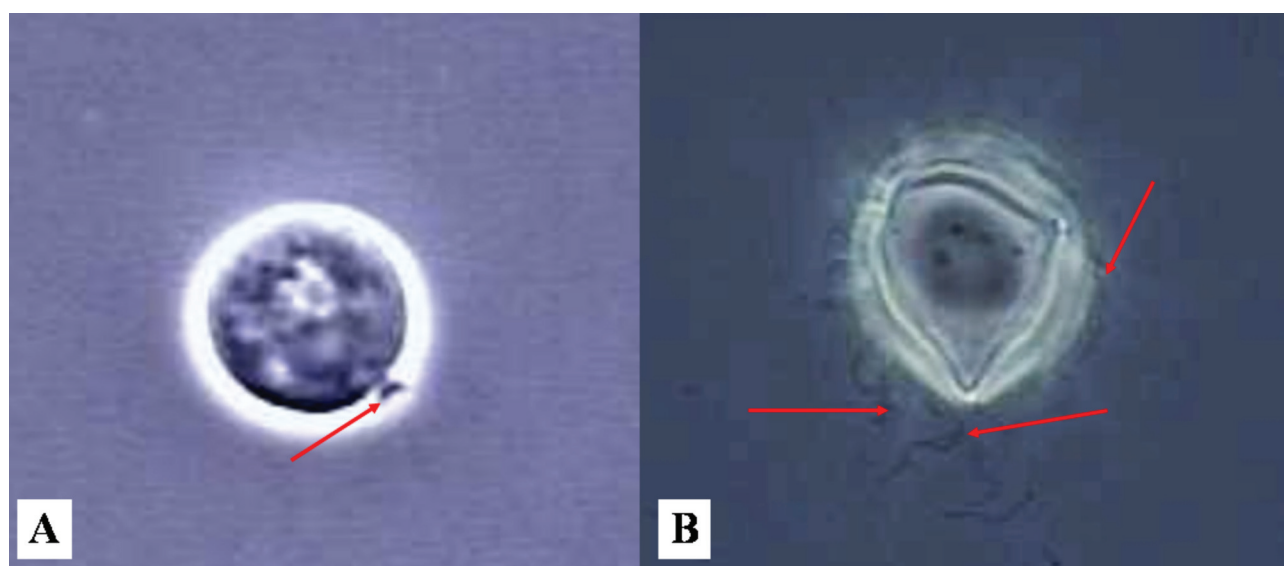
*unispora* is recognized chiefly by its short-stalked, large, generally spherical oogonia (often in glomeruli or on once-branched stalks) usually containing a single, large, centric or subcentric oospore, but having no attendant antheridial filaments.

**Taxonomic summary.** **Mexico.** State of México, fish farm: “El Zarco”, spring (z-10). Fish farm: “El Zarco”, 05/FEB/2007. Vega-Ramírez Sun-10.

**Remarks.** *S. unispora* is a monoecious species and can be distinguished by oospores centric or subcentric; 1-2 per oogonium; 32-38 µm in diameter; germination not observed. Antheridial apparatus absent. *Saprolegnia unispora* is recognized chiefly by its short-stalked, large, generally spherical oogonia (often in glomeruli or on once-branched stalks) usually containing a single, large, centric or subcentric oospore, but having no attendant antheridial filaments. *S. unisporais* distributed in Australia, British Isles, Canada, Czechoslovakia, India, Japan, Republic of China, USA, and USSR (Johnson et al., 2002); this species is cited for the first time in Mexico.

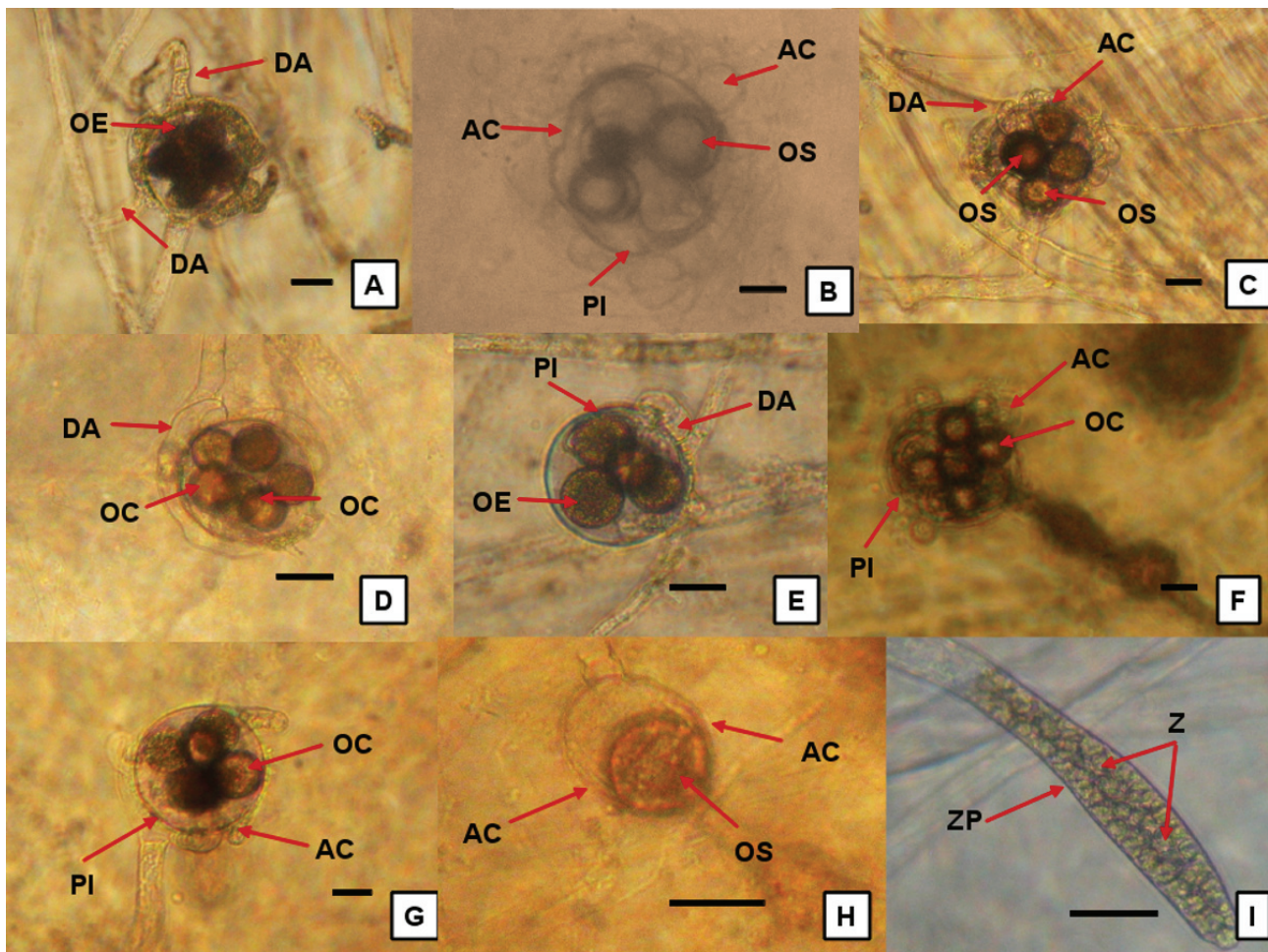
## Discussion

The largest numbers of isolated water molds were found during the coldest months: November to February from water samples (Table 1). *S. diclina* was isolated with a frequency of 60% from trout eggs. *S. parasitica* was isolated with a frequency of 90% from trout lesions. Female trout sampled here predominantly had lesions in



**Figure 7.** Culture with melon seeds and in distilled water at 4° C. A), *S. diclina*. Cyst presented short hooked hair. B), *S. parasitica*. Cyst presented long, hooked hairs in bundles; the white arrow shows the hooked hairs. 100X.





**Figure 8.** Culture with melon seeds and indistilled water at 4° C. A), *A. ambisexualis*. Spherical oogonium with more than 6 oospores eccentric. B), *A. heterosexualis*. Oogonium antheridial cells with 6 oospores. C), *S. australis*. Lateral spherical oogonium with more than 6 oospores subcentric. D), *S. diclina*. Spherical oogonium, wall unpitted, oospores centric. E), *S. glomerata*. Terminal oogonium, antheridial diclinous branch. F), *S. terrestris*. Lateral spherical oogonium, wall pitted androgynous, monoclinous and diclinous antheridial branches. G), *S. uliginosa*. Spherical oogonium with 5 oospores centric. H), *S. unispora*. Oogonium with 1 oospore, without antheridial branches. I), *S. parasitica*. Typical zoosporangia with mature zoospores. A-C, E, G- I: Barr= 20 µm. D, F: Barr= 25 µm. I: Barr= 100 µm. AA: androgynous antheridium, DA: diclinous antheridium, OC: oospores centric, OE: oospores eccentric, OS: oospores subcentric, AC: antheridial cells, PI: pitted, Z: zoospores, ZP: zoosporangia.

hate region (41%), while majority of male trout presented lesions in the caudal fin region (73%). One trout presented lesions on the entire body including the dorsal and anal fins. None of the saprolegniasis positive fishes survived.

Three isolates of *S. parasitica* were obtained from water samples taken from breeding fishponds. The presence of long threads bundles with a hook-shaped ending in secondary cysts is decisive to originate an infection in the fish. Long thread bundles are typically found in pathogenic species such as *S. parasitica* (Diéguez-Urbeondo et al., 2007; Fregeneda-Grandes et al., 2009; Woo and Bruno,

2010). Secondary cysts of *S. parasitica* showed indirect germination and abundant chlamydospore chains, and *S. diclina* showed individual short thread bundles (Fig. 7).

We observed that *S. parasitica* did not form oogonia, instead formed abundant chlamydospore chains, which are secondary cysts having hooked hairs in bundles, and they persisted for a long time. *S. parasitica* was isolated from trout lesions and water. *S. diclina* isolated from trout eggs produced abundant oogonia and the secondary cysts showed no long hairs.

With best of our knowledge the following species were isolated for the first time in Mexico: *Achlya ambisexualis*, *A. heterosexualis*, *Saprolegnia australis*, *S. diclina*, *S. glomerata*, *S. parasitica*, *S. terrestris*, *S. uliginosa* and *S. unispora* (Fig. 8).

The fact that *Saprolegnia* and *Achlya* were found in most of the water samples obtained during the winter, but not from those obtained during the summer months, does not actually exclude the possibility of the presence of water molds all year long, but rather suggests the influence of hormonal and environmental factors on the susceptibility of rainbow trout influencing saprolegniasis infections. The great economic toll caused by high morbidity and mortality by saprolegniasis in rainbow trout warrants further research, and requires immediate attention on the sanitary issues in fish farms to prevent any further spread of *S. parasitica*.

The study of the genus *Saprolegnia* in Mexico is scarce. There is little background information to help clarify what is the impact of such bodies in trout production activity; most of the data we have collected over the years assumed releases from the same fish farmers we have studied. This work is one of the first contributions in the study of the taxonomy of the Saprolegniaceae family in Mexico.

## Acknowledgements

The authors are greatly indebted to staff members of the fish farm "El Zarco" for their skillful and technical assistance. To Dr. Miguel Aguilar-Santelises for his critical review on this manuscript. R. Valenzuela thanks COFAA and IPN for the financial support for their research in the project SIP-20130034.

## Literature cited

Céspedes, A. E. and J. Castillo. 1982. Algunos Chytridiomycetes y Oomycetes aislados de diez localidades en cuatro estados

de la República Mexicana. Boletín de la Sociedad Mexicana de Micología 17:207-210.

Coker, W. C. 1923. The Saprolegniaceae with notes on other water molds. Univ. North Carolina. Press Chapel Hill. USA. p. 201.

Diéguez-Urbeondo, J., J. M. Fregeneda-Grandes, L. Cerenius, L. E. Pérez-Iniesta, J. M. Aller-Gancedo, M. T. Tellería, K. Söderhäll and M. P. Martín. 2007. Re-evaluation of enigmatic species complex *Saprolegnia diclina*-*Saprolegnia parasitica* based on morphological, physiological and molecular data. Fungal Genetic Biology 44:585-601

Fregeneda-Grandes, J. M., M. T. Carbajal-González and J. M. Aller-Gancedo. 2009. Prevalence of serum antibodies against *Saprolegnia parasitica* in wild and farmed brown trout *Salmo trutta*. Disease of Aquatic Organism 83:17-22.

Global Biodiversity Information Facility, digital page, available at: <http://data.gbif.org/occurrences/searchCountries.htm>. Last access: 24.IV.2012.

Johnson, T. W., R. L. Seymour and D. E. Padgett. 2002. Biology and systematics of the Saprolegniaceae. Digital book, available at: <http://ilumina-dlib.org>. Last access: 03.X.2011.

Leclerc, M. C., J. Guillot and M. Deville. 2000. Taxonomic and phylogenetic analysis of Saprolegniaceae (Oomycetes) inferred in LSU rDNA and ITS sequence comparisons. Antonie van Leeuwenhoek 77:369-377.

Seymour, R. L. 1970. The genus *Saprolegnia*. Nova Hedwigia 19:1-124.

Vega-Ramírez, M. T. 2008. Implementación de un método para el estudio de Saprolegniales en centros acuícolas destinados a la producción de trucha arco iris (*Oncorhynchus mykiss*). Tesis maestría, Escuela Nacional de Ciencias Biológicas, Instituto Politécnico Nacional, México, D. F. 88 p.

Weston, W. H. 1917. Observations on *Achlya* lacking sexual reproduction. American Journal of Botany 4:354-367.

Willoughby, L. G., A. D. Pickering and H. G. Johnson. 1984. Polycell-gel assay of water for spores of Saprolegniaceae (fungi), especially those of the *Saprolegnia* pathogen of fish. Hydrobiologia 114:237-248.

Woo, P. T. K. and D. W. Bruno (eds.). 2010. Fish Diseases and Disorders, volume 3. Viral, Bacterial and Fungal Infections, 2nd. ed. Aberdeen, UK. p. 416.