



Original

## Static structural and thermal analysis of brake disc with different cut patterns

Chetan Babasaheb Chavan <sup>a,\*</sup>, Anurag Shankar More <sup>a</sup>, Nikhil Nishikant Patil <sup>a</sup>, Baskar P. <sup>b</sup>

<sup>a</sup> M. Tech. Scholar in Automotive Engineering, School of Mechanical and Building Sciences, VIT University, Vellore-632014, Tamil Nadu, India.

<sup>b</sup> Assistant Professor, School of Mechanical and Building Sciences, VIT University, Vellore-632014, Tamil Nadu, India.

Received dd mm aaaa; accepted dd mm aaaa  
Available online dd mm aaaa

**Abstract:** Power transmission plays an important role in automobiles. Since the concern regarding safety in automobiles has been considered as a top priority, it is very much important to have a complete control over vehicle to make it stop. Brakes are the power interruption devices which absorb the kinetic energy of vehicle and bring it to the rest condition. Once the brakes are actuated, heat is generated due to the friction between pads and rotating disc. This heat generated is responsible for high temperature of the disc. As brakes convert friction into heat, it must be dissipated through it in order to have limited temperature range of the entire system. Under this consideration drums brakes have been replaced by disc brakes as they are more efficient under steady and instantaneous braking conditions. In this paper, models were designed by using CATIA-V5 and then imported to ANSYS 16.2 for static structural and thermal analysis. The designing of discs was carried out considering its application for a two wheeler of 200-250 cc engine capacity. The aim of this paper is to study the heat distribution and the overall deformation of the discs having different cut patterns. Further an extension to this work, an attempt has been made to investigate different aspects like deformation and temperature distribution by varying the alloy materials for discs. This analysis has helped us a lot to understand the behavior of different materials under realistic conditions. The paper is then concluded with the best material and cut patterns in terms of strength, factor of safety and heat dissipation.

**Keywords:** Thermal, Structural, Brake disc, Transmission, Friction

## 1. INTRODUCTION

Drum and disc brakes are the heart of braking system in automobiles. The working principle is same but they differ in their mechanism. A drum brake is attached concentric to the axle hub having internal shoe with friction material on it. The compression and expansion of

spring actuate the shoes against rotating drum. A disc brake is mounted on the wheel hub with caliper on it. The caliper is mounted on stationary part like stub axle. Actuation of pads against rotating disc may be hydraulic or pneumatic. Disc brakes are more efficient than drum brakes because the heat dissipation from disc is more as it is directly exposed to the environment. In addition to this, friction pads are not subjected to any sort of bending. In case of disc brakes, the contact occurs equally when pressed against the rotating disc, whereas for drum brakes contact area between pads and drum increases gradually which results in less efficient braking.

\* Corresponding author.

E-mail address: chetanchavan97@gmail.com (Chetan Babasaheb Chavan).

Peer Review under the responsibility of Universidad Nacional Autónoma de México.

<http://>

During the braking action, kinetic energy of the vehicle is converted into heat due to frictional contact between the pads and disc. The heat dissipation from the front disc brakes is about 70% of the total content of kinetic energy (Muthuvel, Prakash, & Louis, 2015). The objective this paper is to identify the perfect combination of brake disc material on account of different arrangements of cut patterns. Prolonged and continuous braking results in loss of braking efficiency due to excessive temperature in contact area (Talati, & Jalalifar, 2009). So it is important to understand the thermal performance of brake disc under such conditions.

The main problem regarding hard braking is very large amount of heat flux is generated within short amount of time which causes fall in the coefficient of friction. The heat released during braking increases the temperature ranging from 300° C to 800° C. The thermal conductivity of pad must be less than that of disc as the heat dissipation is predominantly due to the plastic micro deformation generated due to the frictional force (Belhocine, & Bouchetara, 2012). Continuous stress formation may lower the fatigue life of disc and even result into a catastrophic failure (Zhu, Peng, Shi, & Chen, 2009). So in order to avoid such undesirable conditions, brake discs are provided with slots of different patterns to make sure that the holes create turbulence when disc rotate so as to increase the convective heat transfer to the atmosphere (Pevec, Lerher, Potrc, & Vranesevic, 2010). While designing a brake disc necessary care must be taken that there must be a proper balance between the number of holes to be punched on a disc to its strength to withstand the braking force. Hence designing a brake disc is quite difficult task as it is important to optimize the weight and strength of discs with efficient rate of heat transfer from it which may lead to the collision of two design requirements (Jiang, L., Jiang, Y., Liang, Nan, & Ding, 2012). So in this paper an honest attempt is made to satisfy both the requirements in designing of brake disc.

According to literature review, Belhocine (2012), studied thermo-mechanical behavior between brake disc and pad considering dry contact. His main intention was to identify the factors necessary for the geometric design of ventilated disc based on transient temperature conditions. He preferred using grey cast iron due to its good thermo-physical properties. Braking time was assumed as 3.5 sec. He concluded that, the variations in temperature observed were less compared to solid

conventional disc. Further he proved that, the ventilation in disc plays an important role as it provides good high temperature thermal resistance. Vishal Asokan, et al. (2015), emphasized on using carbon ceramic matrix disc brakes. He performed static structural analysis on composite disc and analyzed its performance with a standard steel disc. The deformation of composite structure was much less than steel. C. Radhakrishnan, Yokeswaran, Naveen Kumar, et al. (2015), focused on use of Titanium alloy 550 brake disc. The reason behind choosing Titanium alloy 550 is because of its thermal stability, high strength and forgeable qualities. The results of this analysis concluded that, the deformation of Titanium alloy 550 was very less compared to cast iron and stresses induced in Titanium alloy 550 were six times less than that of grey cast iron. Shinde, Sagar, & Baskar (2014), worked on cooling performance of disc brake by varying the cut patterns. After performing static structural and thermal analysis, he concluded that elliptical type disc has better heat transfer than circular type. But the strength to withstand the braking force was more in case of circular type. Huang, & Chen (2006), calculated heat transfer coefficient of disc brake surface and its effect on design parameters. Making use of Reynold's equation they calculated heat transfer coefficient and from that they calculated amount of flux generated. They tabulated results of heat transfer coefficients depending on operating speeds and temperature. It was observed that, temperature distribution patterns were different for different models. The results obtained were acceptable. Further, they concluded that the model can be used as a design tool for designing brake discs.

## 2. METHODOLOGY

Figure 1 shows the step followed for analysis of brake discs.

### 2.1 SELECTION OF MATERIAL

Discs are mounted on the hub which is connected to the wheel and these brake systems generate the brake force by the actuation of brake pads on the rotor (Maleque, Dyuti, & Rahman, 2010). Particularly, small input force is to be converted into large clamping force which will force the pads onto rotating disc generating braking power

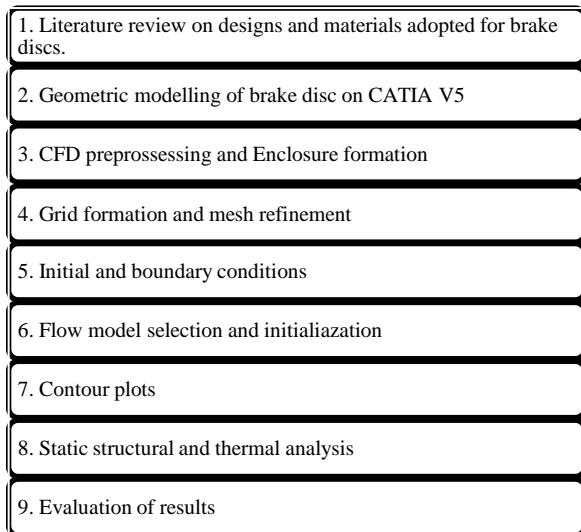


Fig. 1. Flowchart of Methodology.

(Radhakrishnan, Yokeswaran, Vengadeshprasad et al., 2015). Higher is the coefficient of friction, more will be the braking force generated. This coefficient of friction can be selected according to the disc material.

Two different ideas were put for the selection of the material for rotor (Telang, Rehman, Dixit, & Das, 2010):

1. Discs with small diameter and high strength to resist the formation of thermal cracks as well as distortion at high temperature. These type of discs are considered to have low thermal conductivity with good strength.
2. Discs with larger diameter, high thermal conductivity and low strength for higher powered vehicle where space constraint is not of that much importance.

But in the case of two wheeler discs used in front are of larger diameter since front portion of vehicle takes 70% of load during breaking as mentioned earlier.

In this paper, materials selected for the disc are:

1. Aluminium Alloy
2. Magnesium Alloy

While material selected for the pad is:

1. Carbon ceramics

#### Reason for choosing Aluminium alloy and Magnesium alloy-

Aluminium alloys have very less affinity towards galling compared to conventional cast iron brake discs. Galling is basically a type of wear induced by adhesion between sliding surfaces. On the other hand, the production cost is low, lighter in weight and thermal characteristics are better

compared to conventional brake discs. They possess excellent durability and better heat dissipation.

Magnesium alloys are employed in the casting of automotive parts as they provide their own unique mechanical and physical properties. These are lightest of all the alloys and possess high tensile yield strength.

It is already studied that, the performance index of the Aluminium alloy is very high as compared to the Titanium alloy with comparatively less cost (Maleque, et al., 2010). Hence, to study it analytically for the practical condition, these two materials are selected for the disc.

#### 2.1.1 Material Properties

Table. 1. Properties of Brake pad material.

Mechanical	Units of measure	SI
Density	Kg/m <sup>3</sup>	1600
Elastic modulus	Pa	7e+10
Poisson's ratio	-	0.1
Ultimate Compressive strength	Pa	1.9e+8
Maximum use temperature (no load)	°c	1750
Thermal conductivity	W/mK	8
Specific heat	J/gK	1.123

Carbon ceramics have high thermal resistance as well as strength to weight ratio. They produce very less noise during braking and due to their composition wear rate is less than conventional pad materials. One of the most important reason behind this is the ideal operating temperature of the carbon ceramics is much higher compared to the case of normal brakes. The capability to maintain their functionality at high temperatures due to the fact that they don't retain the heat. This is their utmost advantage. In case of a high-performance vehicles as much as six tons of actuating force will be required to stop your vehicles which further produces a lot of heat, over 800°celsius whereas the boiling point for brake fluid is between 600 to 750°F. But the carbon ceramic brakes can diffuse the heat before it influences the brake fluid. Repeated and heavy braking from high speeds is commendably accomplished for longer. On the

other hand there is also less dust accumulation from carbon ceramic brakes. Carbon ceramic brake pads will not wear out as fast as the regular brake pads in similar driving conditions.

#### Properties of disc material:

### 2.2 THEORETICAL CALCULATION

Table. 2. Properties of Disc material.

Mechanical	Units of measure	Al alloy	Mg Alloy
Density	Kg/m <sup>3</sup>	2770	1800
Elastic modulus	Pa	7.1e+10	4.5e+10
Yield strength	Pa	2.8e+08	1.93e+08
Poisson's ratio	-	0.33	0.35
Compressive yield strength	Pa	2.8e+08	1.93e+08
Thermal			
Thermal conductivity	W/mK	171	156
Specific heat	J/KgK	875	1024

#### 2.2.1 Automotive Parameters and Disc Specifications:

The main purpose of this project is to design a brake disc for a two-wheeler in the range of 200-250cc. Hence, the dimensions of the disc are selected considering the general size of the disc for a two-wheeler.

#### 2.2.2 Calculations

Calculations were done for the case of emergency braking of vehicle which is assumed to be travelling at a speed of 100 Km/hr and should be stopped within a distance of 30m.

Given that:

Mass of the Vehicle (M): 230 Kg

Speed of Vehicle (u): 27.77 m/s

Pad Area (A) = 5026.548 mm<sup>2</sup>

Radius of Disc (R) = 140 mm

Braking Time (T) = 5 Sec

Now consider the extreme condition of hard braking, where the vehicle is supposed to be stopped within a distance of 22 m from 100 Km/hr to 0 Km/hr.

According to Newton's law of motion,

$$V^2 = u^2 + 2as$$

Hence, we get

$$a = 17.526 \text{ m/s}^2$$

Calculation of Braking Force:

As 70% of total weight acting on front brake, we have

$$F_b = 0.7 * M * a$$

$$F_b = 2821.79 \text{ N}$$

Calculation of Braking Torque:

$$T_b = F_b * R$$

$$T_b = 397.312 \text{ Nm}$$

Calculation of Heat Generated during braking:

$$Q = \frac{\text{Kinetic Energy}}{\text{Braking Time}}$$

$$Q = 14002.102 \text{ W}$$

Hence, heat flow for single disc = 7000 W

Calculation of Pad Pressure:

$$P_b = \frac{\text{Brake Force}}{\text{Pad Area}}$$

$$P_b = 0.5643 \text{ MPa}$$

### 3. NUMERICAL ANALYSIS

ANSYS fluent version has been used for CFD analysis. The tool forms the base for conducting numerical simulations under different flow conditions inducing numerous complexities. In this present simulation, geometry was divided into sub volumes and then integration was carried out over sub volumes to form a set of coupled algebraic equations for defining velocity and pressure centroid of each volume. The solver further estimates the pressure field and then evaluates the discretized form of momentum equations.

Table. 3. Disc specifications and Automotive Parameters.

Specifications	Values
Outer diameter of Disc (mm)	280
Inner diameter of Disc (mm)	100
Thickness of Disc (mm)	3
Thickness of brake pad (mm)	6
No. of clamp holes	6
Diameter of clamp holes (mm)	8
Pad brake area (mm <sup>2</sup> )	5026.548
Weight of the vehicle (kg)	230
Speed of the vehicle (Km/hr)	100
Stopping Distance (m)	22

**Assumptions made initially are:**

1. The medium taken into considerations is perfect air.
2. Flow is completely steady.
3. Air properties taken into account are at standard temperature and pressure conditions.
4. Radiation effects are neglected.
5. Heat flux is uniform over the disc.

### 3.1 MODELLING SETUP FOR CFD SIMULATION

A quarter model of disc is generated for simulation. From the literature review it has been proven that quarter models are efficient and provide correct data within acceptable limit by reducing large amount of simulation time. So in order to simulate realistic condition quarter model was opted. As the cross section area of disc throughout is constant, disc was modelled half of its thickness and symmetric boundary conditions were used. The contact area between pad and disc has been modelled to provide heat flux over the entire surface.

Mesh details of enclosure is shown in Figure 2. Enclosure was made around the model which forms a fluid medium. Meshing was made fine by using proximity and curvature function.

Enclosure details-

Length- 1.3 m

Breadth- 0.6 m

Thickness- 0.1 m

Mesh Details-

Nodes- 185585

Elements- 888376

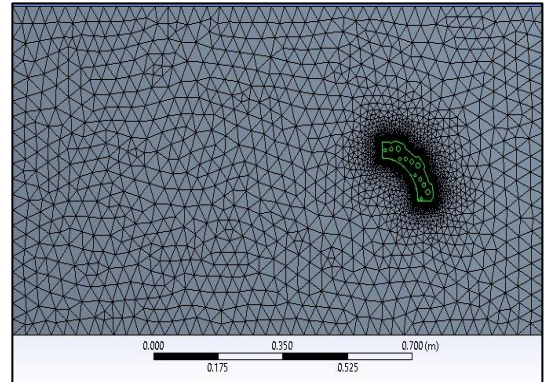


Fig. 2. Mesh details of Enclosure.

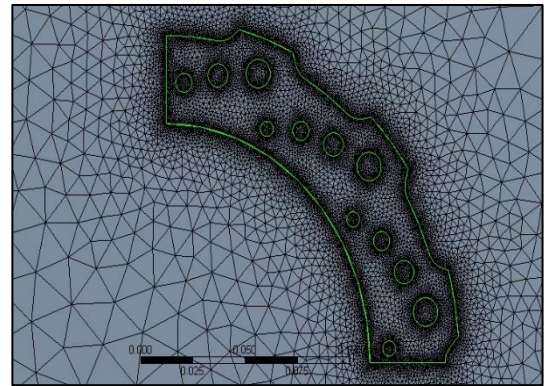


Fig. 3. Mesh details of brake disc.

### 3.2 BOUNDARY CONDITION

In case of braking system, mechanical energy is solely converted into calorific energy. This energy is basically characterized by contact area between pads and disc. Heat generation occurs due to friction between pads and disc. In this case the quantity of heat produced is absorbed by brake disc. Heat flow into the disc is calculated initially and by dividing it with pad area we get heat flux into the contact area which is further used as an input tool initializing the simulation.

#### Heat flux into the disc

$$q = \frac{\text{Heat Flow for single disc}}{\text{Pad area or contact area}}$$

$$q = 696315.1005 \text{ W/m}^2$$



### 3.3 RESULTS OF CFD SIMULATION

Results are as shown in Figure 4 and Figure 5. It helps us to know the heat transfer coefficient of disc which is further used as an input to for steady state thermal analysis.

For disc 1 maximum heat transfer coefficient achieved was  $249 \text{ W/m}^2\text{K}$  whereas for disc 2 maximum heat transfer coefficient achieved was  $236 \text{ W/m}^2\text{K}$ .

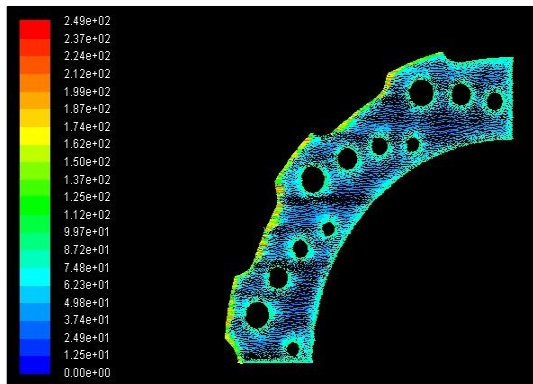


Fig. 4. Wall heat transfer coefficient for disc 1.

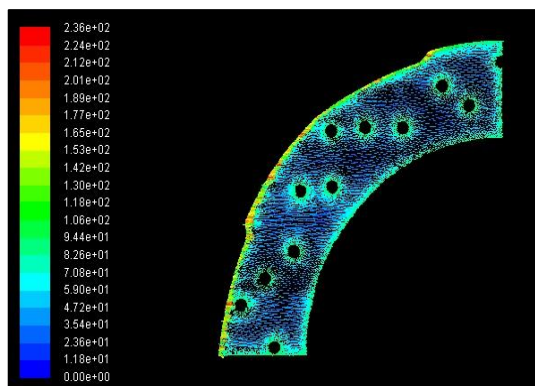


Fig. 5. Wall heat transfer coefficient for disc 2.

Heat transfer coefficient basically defines how efficiently heat is released from a body. As disc 1 is having an aerodynamic advantage and better hole design pattern more heat transfer occurs through disc 1 compared to disc 2. Further making grooves will naturally enhance the heat dissipation rate. Petals can also be provided at the outer edge in order to increase heat transfer coefficient.

## 4. FINITE ELEMENT ANALYSIS

Finite element analysis of brake disc was involved of following steps:

1. Geometry
2. Meshing
3. Boundary Conditions
4. Results

### 4.1 GEOMETRY

Modelling was done in CATIA V5 according the dimensions of the disc mentioned above in table 1. This geometry then imported to ANSYS V16.2 for analysis purpose.

### 4.2 MESHING

Meshing is most important step in FEA, because it decides numerical convergence to the solution. Hence fine or coarse meshing have a great influence on the final results. In this project, fine meshing was done using triangulated surface mesher. Mesh size was selected as 4mm.

Figure 6 show discs with fine meshing. After meshing boundary conditions were applied on each disc.

Figure 6 and Figure 7 shows mesh details of disc 1 and disc 2 respectively.

Table. 4. No. of elements and nodes for disc 1 and disc 2.

	Disc 1	Disc 2
No. of elements	53860 for fine	47291 for fine
	53454 for coarse	46545 for coarse
No. of nodes	94307 for fine	84698 for fine
	93876 for coarse	83864 for coarse

### 4.3 BOUNDARY CONDITIONS

For the structural analysis, disc was fixed at mounting points on hub and at caliper. Moment is applied on the disc about the axis in a plane perpendicular to the plane of disc. Calculated pad pressure was applied on both the brake disc pads. Geometry for the structural analysis with boundary conditions is as shown in figure.

For thermal analysis, initial temperature of disc was set as  $22^\circ\text{C}$ . From the CFD simulation, convective heat transfer coefficient was taken as  $249 \text{ W/m}^2\text{K}$  and  $236 \text{ W/m}^2\text{K}$  for disc 1 and disc 2 respectively. Effect of radiation was also considered. Heat flow from the particular area of contact was calculated and applied on the geometry as shown in figure.

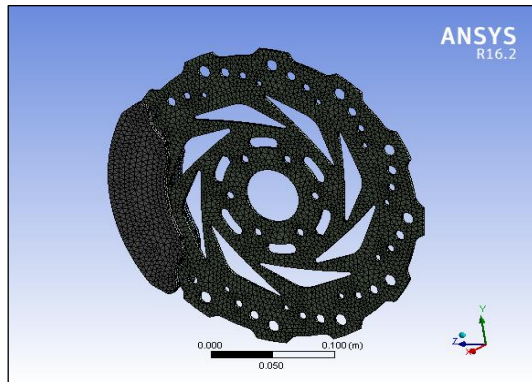


Fig. 6. Meshing of Disc 1.

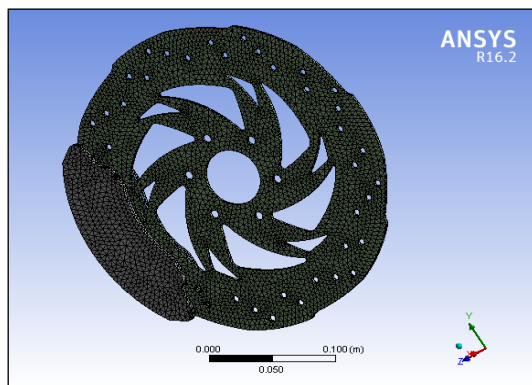


Fig. 7. Meshing of Disc 2.

#### 4.4 ANALYSIS

The analysis was carried out for both magnesium alloy and aluminium alloy by keeping carbon ceramics as pad material.

##### 4.4.1 STRUCTURAL ANALYSIS OF DISC 1

- **Disc material: Magnesium Alloy**
- **Pad material: Carbon ceramics**

Figure 8 indicates applied boundary conditions for disc 1. Disc was fixed at hub mounting position. The outer edges of both the pads were fixed. Pad pressure of magnitude 0.546 Mpa was applied on both the pad surfaces. Moment of 397.312 N-m was applied about the center of the disc. Disc was analyzed for total deformation and factor of safety.

From the analysis with magnesium alloy as a material we can see from Figure 9, the maximum deformation was found to be  $9.0232 \times 10^{-5}$  m. Figure shows deformation is highest at the outer edge and lowest at the inner edge where the fixed constraints were given.

As the moment is provided at the centre of brake disc and clamping forces are generated at the contact region between disc and pads, the region in contact is held firmly by pads whereas the outer region i.e. diametrically opposite to that of contact tends to follow the rotation of disc resulting in greater deformation in outer region.

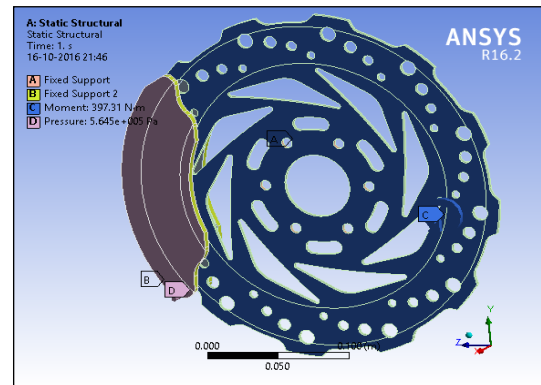


Fig. 8. Boundary Conditions for Disc 1.

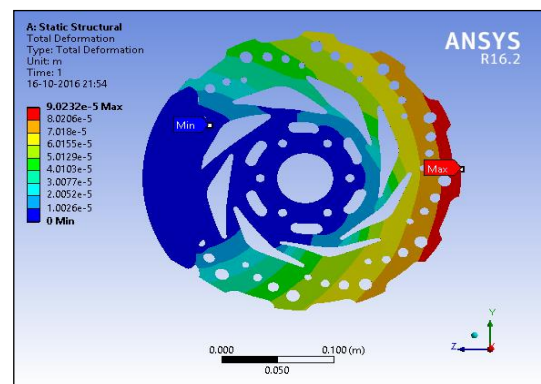


Fig. 9. Total Deformation of Disc 1 (Mg alloy).

Figure 10 shows overall Factor of safety for Disc 1 with Mg alloy to be 3.0883.

- **Disc material: Aluminium Alloy**
- **Pad material: Carbon ceramics**

By applying same boundary conditions with reference to Figure 11, the maximum deformation of disc 1 for aluminium alloy was found to be  $5.725 \times 10^{-5}$  m which was comparatively less than that of magnesium alloy.

Figure 12 shows overall Factor of safety and it was found to be 4.4606 for aluminum alloy disc, which was greater than factor of safety for Mg alloy for disc 1 because of the higher strength of aluminium alloys.

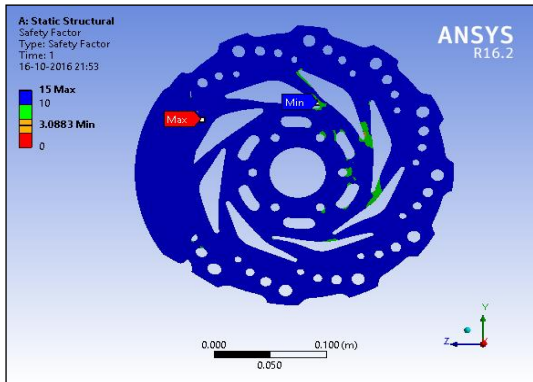


Fig. 10. FOS for Disc 1 (Mg Alloy).

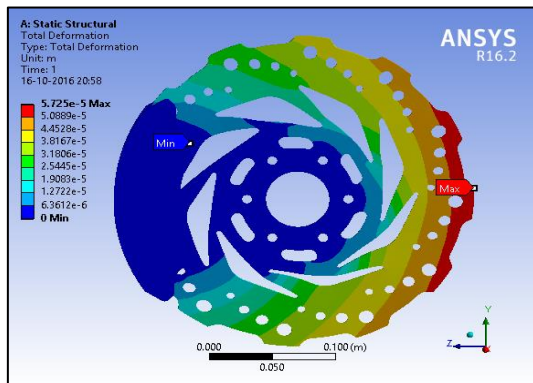


Fig. 11. Total Deformation of Disc 1 (Al alloy).

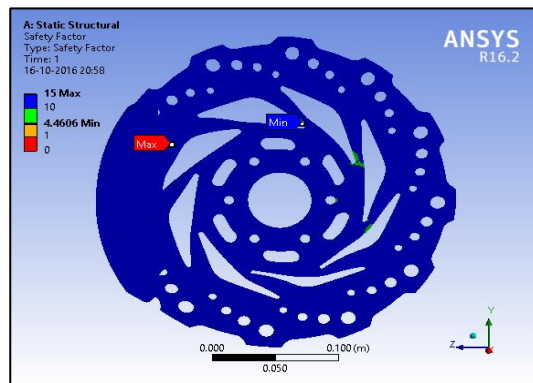


Fig. 12. FOS for disc 1 (Al alloy).

#### 4.4.2 STRUCTURAL ANALYSIS OF DISC 2

- Disc material: Magnesium alloy
- Pad material: Carbon ceramic

For disc 2, Figure 13 shows the applied boundary conditions. Then structural analysis was done for disc 2 by taking material as magnesium alloy and aluminium alloy. Again the brake pad material was kept same for entire analysis.

From Figure 14, Maximum deformation for disc 2 with magnesium alloy observed was  $7.2909 \times 10^{-5}$  m.

Factor of safety achieved was 3.414 for disc 2 with magnesium alloy and shown in Figure 15.

- Disc material: Aluminium alloy
- Pad material: Carbon ceramic

Deformation is shown in Figure 16 and it was  $4.629 \times 10^{-5}$  m for disc 2 with aluminum alloy which was lesser than that of disc with magnesium alloy.

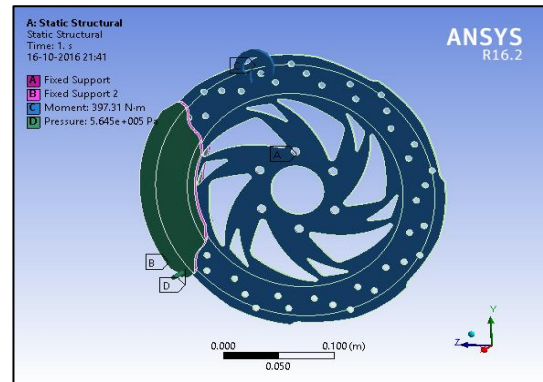


Fig. 13. Boundary Conditions for disc 2.

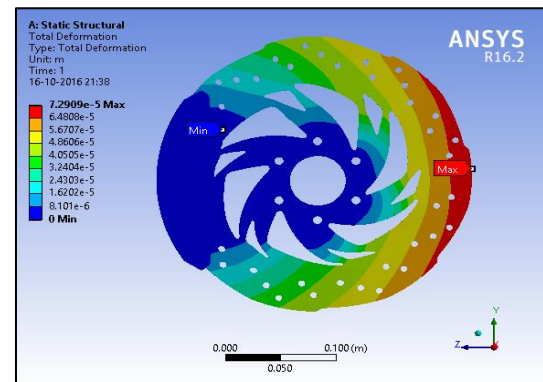


Fig. 14. Total deformation of Disc 2 (Mg alloy).

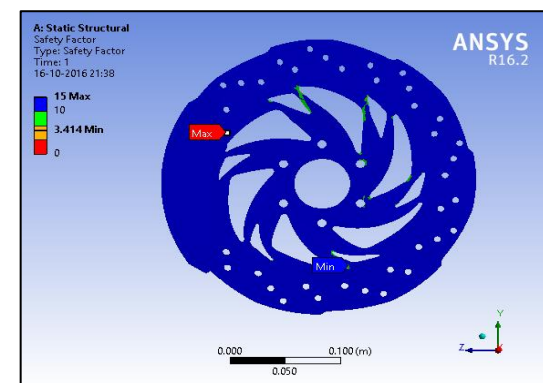


Fig. 15. FOS for disc 2 (Mg alloy).



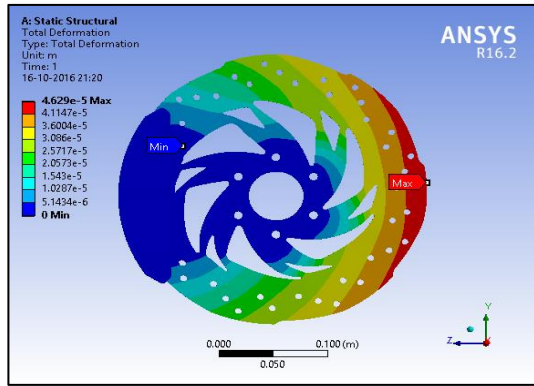


Fig. 16. Total deformation of Disc 2 (Al alloy).

Overall Factor of safety with aluminium alloy was found to be 4.9642 as shown in Figure 17 and which is higher than that of magnesium alloy because of its high strength.

Global security factor basically represents the ability of brake disc to withstand the loading conditions. It is necessary to make sure that the Safety factor does not exceed the acceptable limit, as it would make brake disc over-safe resulting in unwanted loss of material in production.

#### 4.4.3 THERMAL ANALISYS OF DISC 1

For thermal analysis of disc 1, initial temperature condition was taken into an account along with effect of radiation. Calculated heat flow was applied onto the geometry as shown in Figure 19 and Figure 20 for magnesium alloy and aluminium alloy respectively. The results were plotted distribution of temperature.

- Disc material: Magnesium Alloy
- Pad material: Carbon ceramics

According to the calculations, heat flow was provided within the boundary of the contact area between pads and disc.

Brakes applied at high speed causes more heat to generate. The temperature reached for these conditions was 549.86 °C.

- Disc material: Aluminium Alloy
- Pad material: Carbon ceramics

#### 4.4.4 THERMAL ANALISYS OF DISC 2

For disc 2, the same calculated heat flow was applied for both the materials. Figure 18 and Figure 21 shows the area on the disc where the heat flow was applied. Then geometry was analyzed for the temperature distribution across the disc.

- Disc material: Magnesium Alloy
- Pad material: Carbon ceramics

Heat flow was provided within the contact region between pads and disc as shown in Figure 21.

Air turbulence within the patterns plays an important role for heat dissipation. So the temperature achieved was less compared to others with magnesium alloy which can be seen from Figure 22.

- Disc material: Aluminium Alloy
- Pad material: Carbon ceramics

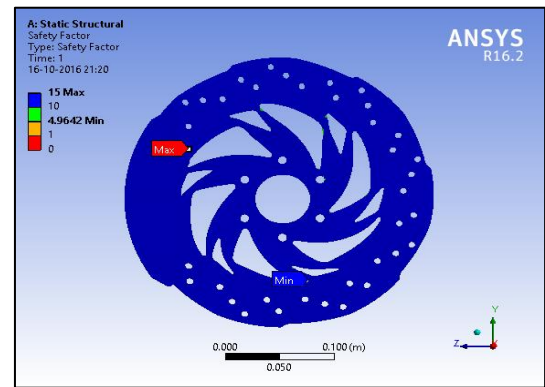


Fig. 17. FOS for disc 2 (Al alloy).

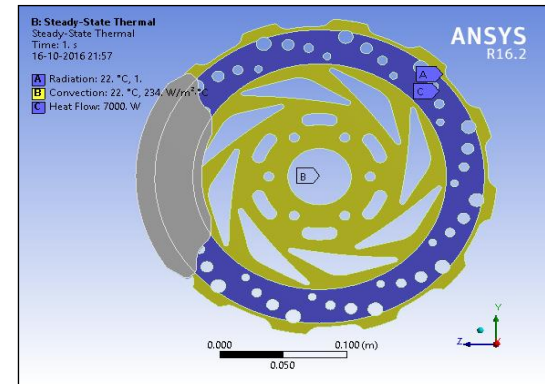


Fig. 18. Heat flow through the disc.

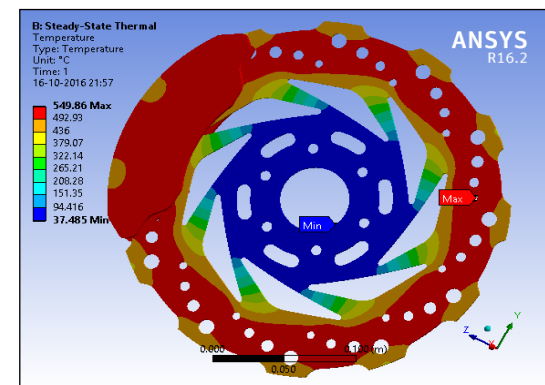


Fig. 19. Temperature Distribution (Mg alloy).

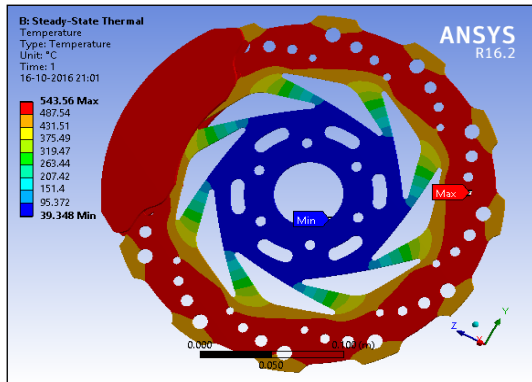


Fig. 20. Temperature Distribution (Al alloy).

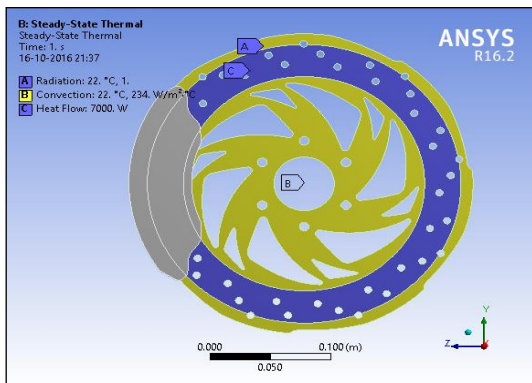


Fig. 21. Heat flow through the disc.

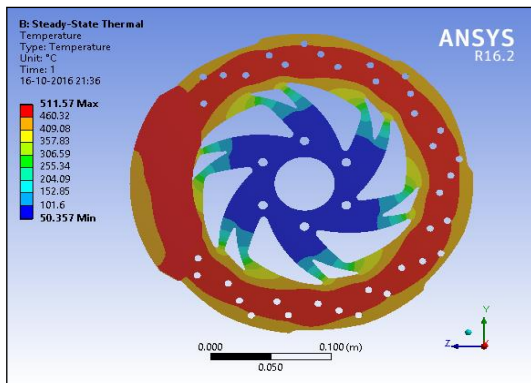


Fig. 22. Temperature Distribution (Mg alloy).

exceeding normal conditions as the initial assumptions made are based on extreme braking conditions. Another reason for high temperature is due to smaller contact area with higher actuating force. Since our study is based on analysing the heat dissipation for different models, one can make use of greater contact area with lesser actuating force for limiting the maximum temperature.

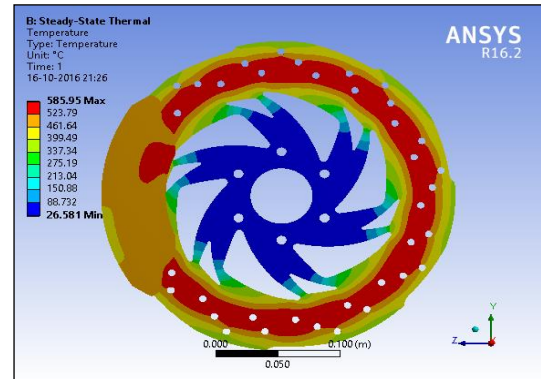


Fig. 23. Temperature Distribution (Al alloy).

## 5. RESULTS

Table 5. Results of structural analysis for disc 1.

Material	Aluminum Alloy	Magnesium Alloy
Deformation (mm)	5.75E-05	9.02E-05
Factor of safety	4.46	3.083

Table 6. Results of structural analysis for disc 2.

Material	Aluminum Alloy	Magnesium Alloy
Deformation (mm)	4.629E-05	7.29E-05
Factor of safety	4.96	3.414

Table 7. Results of thermal analysis for disc 1.

Material	Aluminum Alloy	Magnesium Alloy
Max. Temperature (° C)	523.93	530.33

Table 8. Results of thermal analysis for disc 2.

Material	Aluminum Alloy	Magnesium Alloy
Max. Temperature (° C)	583.32	509.06

Friction is sole cause of heat. Area with maximum temperature represents high amount of friction. In accordance with Figure 23 for disc 2 with material as aluminium alloy, temperature observed was 585.95°C.

The temperature observed is quite on a higher side because we have considered extreme braking conditions i.e. a motorcycle must come to a halt from 100 km/hr to 0 km/hr within a specified distance of 22 m. Under frequent braking conditions, the temperature of disc reach up to 250-350 °C. It is highly expected to have a temperature

## 6. CONCLUSIONS

### A. For Structural analysis:

1. For aluminium alloy as well as magnesium alloy, the deformation observed for disc 2 was less than that of disc 1.
2. Factor of safety achieved for disc 2 was slightly higher than disc 1.

From this we can conclude that design of disc 2 is better in terms of strength for both materials.

### B. For thermal analysis:

1. Considering aluminium alloy as a same material for discs, it was observed that maximum temperature is on the higher side compared to disc 1.
2. Whereas in case of magnesium alloy design of disc 2 is more efficient in terms of heat flow through the disc. And temperature of disc 2 was also considerably less as compared to other discs.

Hence, from above results we can conclude that, compatibility of material with disc pattern also plays an important role for designing brake discs. In order to have better heat dissipation, disc 2 design with magnesium alloy can be used. Also for better braking performance in terms of strength, design of disc 2 is better.

As the performance of disc 1 is also within the acceptable range, one can make use of disc 1 with aluminium alloy as it does have better heat transfer coefficient which would naturally have an impact when it comes to heat dissipation through holes.

### Measures to reduce deformation

The most important factor to be considered for minimizing the deformation of discs is redefining the contact area of pad with disc. Pads must be designed in such a way that they adhere properly with discs without creating any strain on operating conditions of disc. ABS can be considered as an option because the entire ABS module has information regarding the optimum braking conditions which makes sure that vehicle comes to halt without any squeaking of brake disc and skidding of tyres.

## ACKNOWLEDGMENT

This work was performed under the guidance of Prof. Baskar P. The valuable suggestions that we received helped us a lot to improve our knowledge and understanding towards designing and performance analysis of brake discs.

## NOMENCLATURE

$M$	: Mass of vehicle
$V$	: Speed of vehicle after braking
$u$	: Initial speed of vehicle
$R$	: Outer radius of brake
$T$	: Braking Time
$A$	: Pad area
$a$	: Deceleration
$s$	: Stopping distance
$F_b$	: Braking force
$T_b$	: Braking torque
$P_b$	: Pad pressure
$Q$	: Heat generated during braking

## REFERENCES

- Belhocine, A., & Bouchetara, M. (2012). Thermal analysis of a solid brake disc. *Applied Thermal Engineering*, 32, 59-67.
- Huang, Y. M., & Chen, S. H. (2006). *Analytical study of design parameters on cooling performance of a brake disk (No. 2006-01-0692)*. SAE Technical Paper.
- Jiang, L., Jiang, Y. L., Liang, Y. U., Nan, S. U., & Ding, Y. D. (2012). Thermal analysis for brake disks of SiC/6061 Al alloy co-continuous composite for CRH3 during emergency braking considering airflow cooling. *Transactions of Nonferrous Metals Society of China*, 22(11), 2783-2791.
- Maleque, M.A., Dyuti, S., Rahman, M.M. (2010). Material selection method in design of automotive brake disc. *WCE 2010 - World Congress on Engineering 2010*, 3, 2322-2326.
- Muthuvel, A., Prakash, N., & Louis, S. W. (2015). Numerical analysis of a rotor disc for optimization of the disc materials. *Journal of Mechanical Engineering and Automation*, 5(3B), 5-14.
- Pevac, M., Lerher, T., Potrc, I., & Vranesovic, D. (2010). Numerical temperature analysis of brake disc considering cooling. *Advanced Engineering*, 4(1), 55-64.
- Radhakrishnan, C., Yokeswaran, K., Naveen Kumar, M., Sarath kumar, B., Gopinath, M., & Inbasekar, B. (2015). Design and optimization of ventilated disc brake for heat dissipation. *International Journal of Innovative Science, Engineering & Technology*, 2(3), 692 – 694.
- Radhakrishnan, C., Yokeswaran, K., Vengadeshprasad, M., Vishnuhasan, A., Vimalraj, T., & Velusamy, M. (2015). Design and analysis of disc brake with titanium alloy. *International Journal of Innovative Science, Engineering & Technology*, 2(5), 1044-1050.

- Shinde, V. V., Sagar, C. D., & Baskar, P. (2014). Thermal and structural analysis of disc brake for different cut patterns. *International Journal of Engineering Trends and Technology*, 11(2), 84-87.
- Talati, F., & Jalalifar, S. (2009). Analysis of heat conduction in a disk brake system. *Heat and Mass Transfer/Waerme-und Stoffuebertragung*, 45(8), 1047-1059.
- Telang, A. K., Rehman, A., Dixit, G., & Das, S. (2010). Alternate materials in automobile brake disc applications with emphasis on Al composites: A technical review. *Journal of Engineering Research and Studies*, 1(1), 35-46.
- Vishal Asokan, Arshad Mohammed Gani, P., Vimal, M., Mohammed Nooh Muballigh, A., & Muthu mohammad inzaman bari, M. (2015). Design and analysis of reinforced composite matrix disc brake. *International Journal of Engineering Research and General Science*, 3(5), 669-707.
- Zhu, Z. C., Peng, Y. X., Shi, Z. Y., & Chen, G. A. (2009). Three-dimensional transient temperature field of brake shoe during hoist's emergency braking. *Applied Thermal Engineering*, 29(5), 932-937.