

The family Podolampadaceae (Dinoflagellata) in Mexican waters

La familia Podolampadaceae (Dinoflagellata) en las aguas mexicanas

Ismael Gárate-Lizárraga¹, Yuri B. Okolodkov^{2,*}

Recibido: 01 de agosto de 2022.

Aceptado: 28 de noviembre de 2022.

Publicado: diciembre de 2022.

RESUMEN

Antecedentes. Los registros ilustrados de los Podolampadaceae de aguas mexicanas son escasos. **Objetivos.** Estudiar la morfología teical de los géneros *Blepharocysta* y *Podolampas* y documentar la presencia de especies planctónicas en aguas del Atlántico y Pacífico alrededor de México fueron los principales objetivos del presente estudio. **Métodos.** Se tomaron muestras de botellas y de red en la columna de agua en el sur del Golfo de California (estado de Baja California Sur) y el sur del Golfo de México (estados de Veracruz y Yucatán) de 2008 a 2019. Se tomaron fotos en microscopio electrónico de luz y barrido (MEB), y se realizaron observaciones sobre la morfología teical de los Podolampadaceae. **Resultados.** Se examinó la morfología teical de *Blepharocysta denticulata*, *B. okamurae*, *B. paulsenii*, *B. splendor-maris*, *Podolampas bipes*, *P. elegans*, *P. palmipes*, *P. reticulata* y *P. spinifera*; se muestran micrografías en MEB de siete especies. Las células de *Blepharocysta* exhibieron una amplia variación de las características teicales. Las descripciones breves van acompañadas de referencias a publicaciones que contienen ilustraciones. Se presenta la historia del estudio de los Podolampadaceae. **Conclusiones.** Los datos morfológicos no son suficientes para confirmar el estado dudoso de algunos Podolampadaceae o para aclarar las relaciones genéricas, específicas e infraespecíficas dentro de la familia; por lo tanto, los datos moleculares son necesarios.

Palabras clave: *Blepharocysta*, México, morfología, *Podolampas*, taxonomía.

ABSTRACT

Background. Illustrated records of the Podolampadaceae from Mexican waters are scarce. **Goals.** To study the thecal morphology of the genera *Blepharocysta* and *Podolampas* and to document the occurrence of planktonic species in both Atlantic and Pacific waters around Mexico were the main objectives of the present study. **Methods.** Bottle and net samples were taken from the water column in the southern Gulf of California (Baja California Sur state) and the southern Gulf of Mexico (Veracruz and Yucatan states) from 2008 to 2019. Light and scanning electron microscope (SEM) photos were taken, and observations on thecal morphology of the podolampadaceans were made. **Results.** Thecal morphology of *Blepharocysta denticulata*, *B. okamurae*, *B. paulsenii*, *B. splendor-maris*, *Podolampas bipes*, *P. elegans*, *P. palmipes*, *P. reticulata* and *P. spinifera* was examined; SEM micrographs of seven species are shown. *Blepharocysta* cells exhibited a wide variation of thecal features. Short descriptions are accompanied by references to publications that contain illustrations. The history of the study of the podolampadaceans is presented. **Conclusions.** Morphological data are not sufficient to confirm the status of some doubtful podolampadaceans or to clarify infraspecific, species and generic relationships within the family; therefore, molecular data are necessary.

Keywords: *Blepharocysta*, Mexico, morphology, *Podolampas*, taxonomy.

¹ Instituto Politécnico Nacional, Centro Interdisciplinario de Ciencias Marinas (IPN-CI-CIMAR), Departamento de Plancton y Ecología Marina. Av. Instituto Politécnico Nacional s/n, Apdo. Postal 592, La Paz, Baja California Sur, 23096. Mexico

² Laboratorio de Botánica Marina y Planc-tología, Instituto de Ciencias Marinas y Pesquerías, Universidad Veracruzana (IC-MAP-UV). Mar Mediterráneo 314, Fracc. Costa Verde, Boca del Río, Veracruz, 94294. Mexico

*Corresponding author:

Yuri B. Okolodkov: e-mail: yuriokolodkov@yahoo.com

To quote as:

Gárate-Lizárraga, I. & Y. B. Okolodkov. 2022. The family Podolampadaceae (Dinoflagellata) in Mexican waters. *Hidrobiológica* 32 (3): 251-263.

DOI: 10.24275/uam/izt/dcb/hidro/2022v32n3/Garate

INTRODUCTION

The peridinioid family Podolampadaceae Er. Lindem., 1928, characterized by the absence of a transversal furrow, cingular lists and a depressed sulcus bordered by the lists from both sides and therefore easily recognizable, includes eight genera: *Podolampas* F. Stein, 1883, *Blepharocysta* Ehrenb., 1873, *Gaarderia* Carbonell-Moore, 1994, *Heterobractum* Carbonell-Moore, 1994, *Lessardia* Saldarriaga et Taylor, 2003, *Lissodinium* Matzenauer, 1933 emend. Carbonell-Moore, 1991, *Mysticella* Carbonell-Moore, 1994, and *Roscoffia* Balech, 1956. The morphological differences between the genera are, to a greater extent, in the structure of the apical pore complex (APC) including the cover plate (Carbonell-Moore, 1994a); the genera *Gaarderia*, *Heterobractum* and *Mysticella* were described based on the differences in the APC structure, cell compression and cell bilateral asymmetry. Only recently, based on molecular data, Gómez *et al.* (2010) proved that *Roscoffia* and *Lessardia* are also from the podolampadacean (also called podolampadacean) clade, although Carbonell-Moore (2004) considers the latter as belonging to the family Lessardiaceae Carbonell-Moore, 2004, due to the difference in plate formula from the rest of the podolampadaceans.

Of them, *Podolampas* and *Blepharocysta* are the most common genera constituting plankton communities in both tropical and temperate waters. Six well-separated *Podolampas* species are known, without considering a poorly described *P. curvatus* Schiller from the Adriatic Sea (Schiller, 1937: 476, fig. 549), also illustrated by Wood (1968: 119, fig. 363) from the Caribbean Sea, and *P. antarctica* Balech (Balech & El-Sayed, 1965: 121, pl. 4, fig. 56-64) described from the Weddell Sea and also pictured in Taylor (1976: 170, pl. 27, fig. 283) from the southwestern Indian Ocean. For the genus *Blepharocysta*, six species names were known by the beginning of the 1960s: *B. splendor-maris* Ehrenb., 1859, *B. striata* Schütt, 1895, *B. paulsenii* Schiller, 1937, *B. denticulata* Nie, 1939, *B. compressa* Gaarder, 1954, and *B. matzenaueri* Gaarder, 1954 (Balech, 1963). At present, five species names are accepted taxonomically: *B. splendor-maris*, *B. denticulata*, *B. paulsenii*, *B. hermosillae* Carbonell-Moore, 1992, and *B. okamurae* Abé, 1966 (Guiry & Guiry, 2022); however, the validity of *B. paulsenii* described from the Adriatic Sea is considered doubtful and to be synonymous to *B. splendor-maris* (Nie, 1939). Balech (1988) accepted *B. paulsenii*, noting that this species has a lower epitheca compared to others; in addition, he considered *B. okamurae* a doubtful species, at the same recognizing the rather wide morphological variability of *B. splendor-maris*. Furthermore, Balech (1988) stressed two peculiar features in *B. denticulata*: a shorter sulcus and the sulcal membranes projecting completely to the ventral side of the cell. More differences in detail of this species from others in the genus are given in Balech (1963). Recently, based on light microscopy and scanning electron microscopy observations, Hernández-Becerril & Arce-Rocha (2021) recognized all five aforementioned species, with a special emphasis on *B. paulsenii* and *B. splendor-maris*; they also reviewed the other authors' opinions on the synonymy of *Blepharocysta* species. Finally, based on *Blepharocysta*-like species, Mertens *et al.* (in press) described two new podolampadacean genera, *Sphaeralata* Nézan, Carbonell-Moore, K. N. Mertens et Chomérat and *Pseudosphaeralata* Nézan, Carbonell-Moore, K. N. Mertens et Chomérat, using both morphological and molecular criteria.

Although the podolampadaceans have been known since the end of the nineteenth century, and Kofoid (1909) described the theca of *Podolampas* in detail, their morphology had been not well determined until

the mid-twentieth century (Nie, 1939, 1942; Balech, 1954, 1963). In addition to the aforementioned literature, studies dedicated especially to the Podolampadaceae and *Podolampas* in particular were published by Rampi (1941), Andreis & Andreoli (1975), Carbonell-Moore (1994a, b, 2004), Saldarriaga *et al.* (2003) and Gómez *et al.* (2010). The monograph by Balech (1988) on the dinoflagellates of the South Atlantic also contains detailed information on the morphology of thecae of the podolampadaceans.

In the Mexican Pacific, five *Podolampas* and two *Blepharocysta* species have been reported since the early 1940s (Gilbert & Allen, 1943; Barreiro-Güemes, 1967; González-Villalobos, 1971; Okolodkov & Gárate-Lizárraga, 2006). Occasionally, their records were documented with illustrations (Licea *et al.*, 1995; Hernández-Becerril, 1988a, b; Gárate-Lizárraga *et al.*, 2007; Esqueda-Lara & Hernández-Becerril, 2010; Hernández-Becerril & Arce-Rocha, 2021), with *P. reticulata* and *P. spinifera* illustrated only twice (Hernández-Becerril, 1988a, b; Esqueda-Lara & Hernández-Becerril, 2010). The objective of the present study was to document the presence of the *Podolampas* and *Blepharocysta* species in the Mexican Pacific and Atlantic.

MATERIAL AND METHODS

As a part of an ongoing toxic and noxious microalgal monitoring program, phytoplankton bottle samples were collected monthly at two fixed sampling stations in the Bahía de La Paz, southern Gulf of California, Mexican Pacific. The first sampling station was located above the shallow basin at the southernmost end of the bay (24°21'N, 110°31'W; see Gárate-Lizárraga & González-Armas, 2015) with samples collected from October 2010 through September 2016, and the second one was in Alfonso Basin (24°39'N, 110°36'W), from which samples were taken from June 2016 through December 2018 (see Silverberg *et al.*, 2006). Phytoplankton samples were collected in plastic flasks of 250 ml capacity, fixed with an acid Lugol's solution, and later preserved with 37% formalin to a final concentration of 4%. Surface horizontal tows were taken with a 20 µm mesh net. Sea surface temperature was measured with a bucket thermometer. A sub-sample was taken for live phytoplankton observations. Examination and identification of Pacific podolampadacean species was made under a Carl Zeiss phase-contrast microscope. A digital Konus camera (8.1 MP) was used to record the images.

Atlantic samples were taken from the coastal waters of the State of Veracruz, southwestern Gulf of Mexico, at 27 stations located within the National Park Sistema Arrecifal Veracruzano. Approximately 700 samples were taken by hand with a 20 µm or 30 µm mesh phytoplankton net during 5 min. horizontal tows at a boat speed of ca. 2.5 knots to sample the uppermost 30-cm layer. Collections were made almost every week during the period from May 2005 through April 2008 as a part of the monitoring program of the Aquarium of Veracruz (AVM) and during two monthly monitoring programs by ICIMAP-UV from September 2006 through September 2007 (CEP-I) and from April 2007 through May 2008 (CEP-II). Site depths ranged from 1.5 m to 34 m. The samples were fixed with a stock formaldehyde solution to a final concentration of 4% and stored in 100-ml plastic bottles. Some samples were taken sporadically from the northern Yucatan coastal waters in the southeastern Gulf of Mexico from 2008-2019.

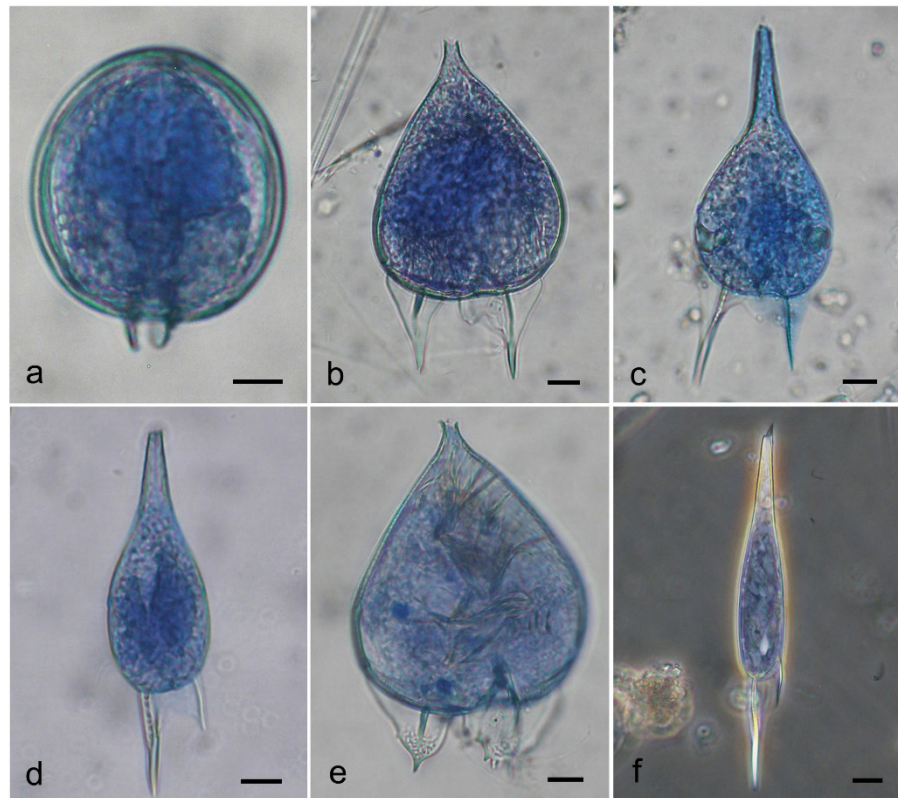


Figure 1. Light microphotographs of the Podolampadaceae species from the southern Gulf of Mexico (State of Veracruz): a – *Blepharocysta* sp. (ventral view), b – *Podolampas bipes* (ventral view), c – *P. elegans* (ventral view), d – *P. palmipes* (dorsal view), e – *P. reticulatum* (ventral view), f – *P. spinifera* (ventral view). Thecae were stained with Trypan Blue; a-e – bright field images, f – phase contrast image. Scale bar: 10 μ m.

In the laboratory, a 0.2% Trypan Blue solution was added to water mounts (Lebour, 1925). This stain has been used to better distinguish sutures between thecal plates, allowing examination of the shape of individual plates and their connections with the adjacent ones and the tabulation pattern in general. A Nikon TS100 and an Olympus CKX41 inverted phase-contrast microscope were used in combination with a Sedgwick-Rafter 1-ml chamber and an Olympus BX51 compound microscope equipped with phase-contrast objectives, and a digital Olympus C7070 Wide Zoom camera (5.1 MP) was used for water mounts and microphotography. Some samples were examined primarily in a JEOL JSM-7600F scanning electron microscope (SEM) at a working distance of 15 to 21 mm and a voltage of 1.2 to 5.0 kV after a preliminary wash in distilled water, followed by dehydration in a series of ethanol solutions of increasing concentration (30, 50, 70, 90 and 100%), air drying on 0.5" aluminum mounts and sputter coating with gold-palladium using a Polaron SC7640 High Resolution Sputter Coater (Quorum Technologies, Newhaven, East Sussex, U. K.). Occasionally, an environmental SEM Philips XL30 was used at a working distance of 9.9-10.0 mm and a voltage of 25.0 kV. Species were identified using exclusively SEM images (*Blepharocysta*) or light microscopy (*Podolampas*); in the latter case, SEM images were not critical for species identification and provided additional information about the dinoflagellate thecae.

After each description given below, only references to publications with illustrations are included, and they are marked with asterisks: an asterisk (*) indicates line drawings, two asterisks (**) indicate light micrographs and three asterisks (***) indicate scanning electron micrographs. Abbreviations of authors of scientific names are used according to Brummitt & Powell (1992) unless they were not listed in the book.

RESULTS

Family Podolampadaceae Er. Lindem., 1928 (for synonymy, see Fensome *et al.*, 1993: 141-143).

Diagnosis: "Peridiniineans in which the cingulum is not readily apparent but in which a series of three plates occur posterior to the equator of the cell" (Fensome *et al.*, 1993: 143). The thecal formula: Po, 3', 1a, 5", 3c, 3-2"" (two precingulars is an exceptional case), 3"" (as interpreted by Fensome *et al.*, 1993); the sulcus is formed by four main plates and, in some cases, another one or two (Balech, 1988). There are neither longitudinal nor latitudinal furrows, characteristic for most dinoflagellates: the zone that corresponds to the cingulum has no membranes, and the sulcus is marked with well-developed lists; these lists are nearly absent only in *B. denticulata* (Balech, 1963). Interpretation of plates, and thus the thecal formula, differs with the authors. According to

Balech (1963, 1988), the cingular plates are very large, forming a band that is higher than the hypotheca so that the epitheca, the cingulum and the hypotheca form a continuous surface uninterrupted by grooves, membranes or ridges. Theca smooth or weakly reticulated, with spar-

sely scattered round or elliptical pores. *Blepharocysta splendor-maris*, *Podolampas bipes* and *P. palmipes* are non-photosynthetic (Hallegraeff & Jeffrey, 1984). Kleptochloroplasts present in two *Podolampas* species (Schweikert & Elbrächter, 2004). Resting cysts unknown.

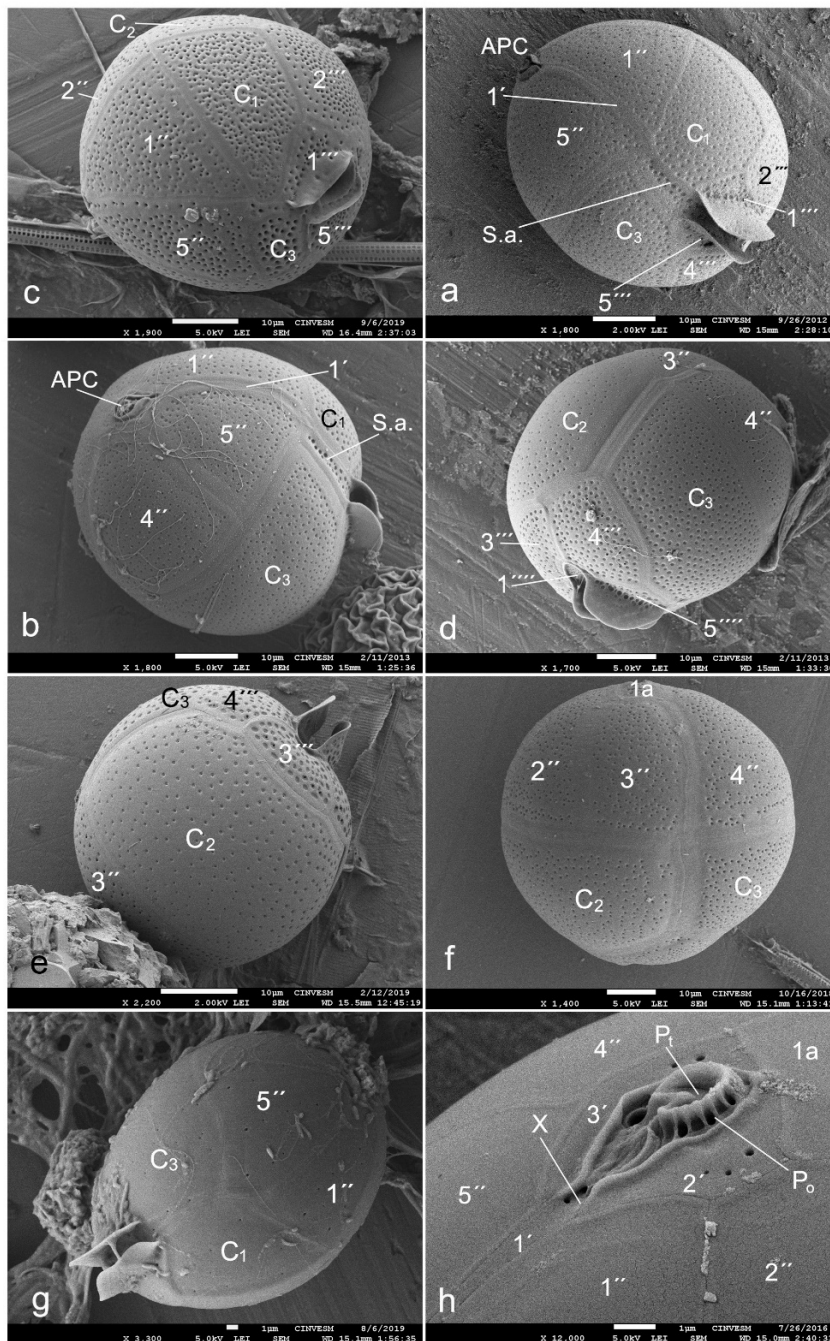


Figure 2. Scanning electron micrographs of *Blepharocysta* species from the southern Gulf of Mexico (states of Veracruz and Yucatan): a – *B. denticulata* in left-side-ventral view, b–e – *B. okamurae* (b – ventral view, c – ventral-right-side-apical view, d – right-side-dorsal-antapical view, e – dorsal view), f – *B. paulsenii* in dorsal view, g – *B. splendor-maris* in ventral view, h – the apical pore complex and adjacent epithecal plates in *B. splendor-maris*. Symbols of the Kofoidian tabulation system: APC – apical pore complex, P₀ – pore plate, P₁ – cover platelet, X – canal platelet, 1'–3' – apical plates, 1''–5'' – precingular plates, C₁–C₃ – cingular plates, S.a. – sulcal anterior plate, 1'''–5''' – postcingular plates, 1'''' – antapical plate. Scale bars: 10 µm in a–f; 1 µm in g and h.

Genus *Blepharocysta* Ehrenb., 1873

Cell shape widely elliptical to slightly oval along the longitudinal axis, not compressed dorsoventrally, without neck and antapical spines. The apical area is only just marked with a slight concavity rounded with almost indiscernible ridges. Two antapical-ventral lists are located very close to each other, almost parallel to the longitudinal axis of the cell and protrude backward. Plates 2' and 3' are very small, embracing the Po plate. The 1a plate is small and rectangular; it appears to be connected to the Po, but it is separated by thin prolongations of the 2' and 3' plates. Cingular groove is absent. Sulcus is narrow and very shallow at the posterior end located between the two membranes mentioned above. The apical pore complex is button-like, rather large. The pores are more or less dense in the precingulars and apicals, and denser in the postcingulars, where they do not form a double row as in most *Podolampas* species; the cingulars bear finer and sparser pores (Balech, 1988). Nucleus is large, with condensed chromosomes as striae easily seen under a light microscope. Chloroplasts absent. Resting cysts unknown. The thecal formula: Po, Pt, x, 3', 1a, 5'', 3c, 4s, 4-5''', 1'''' (Okolodkov, 2011).

Blepharocysta denticulata Nie, 1939: 32, pl. 2, fig. 20-25. (Fig. 2a)

Cell globose or subglobose, with two membranes located ventrally, almost parallel to the longitudinal axis of the cell, closer to the antapex, but more ventrally and shorter than in *B. splendor-maris* and *B. okamurae*. Theca is coarsely areolated, with densely situated pores, each of them located in rather deep depressions. The cingular plates are shorter in relation to the longitudinal axis of the cell than in the mentioned two species. Cell length 46 µm, width 45 µm.

Morphological note: According to the original description of Nie (1939), the sulcal area of the species is broader and shorter than in *B. splendor-maris*; theca is without markings, sutures are zigzags, the 1a plate is quadrangular (in *B. splendor-maris* it is rectangular); of the postcingular plates, the 3'' plate is the largest (in *B. splendor-maris* the 2'' is the largest); there is a differentiation between transversal series of plates as to the pore types.

Blepharocysta okamurae T. Abé, 1966: 144, fig. 33-38. (Fig. 2b-e)

Cell ovoid, with two membranes located ventrally, almost parallel to the longitudinal axis of the cell, closer to the antapex, longer than in *B. denticulata*. Theca is less coarsely areolated than in *B. denticulata*, with densely situated pores, each of them located in shallow depressions. The cingular plates longer than in the latter. Cell length 46 µm, width 41 µm.

Morphological note: As for the cell shape, according to Abé (1966), this species is more rounded than *B. splendor-maris* and more similar to *B. paulsenii*; the sulcal lists are located more anteriorly and distinctly areolated; the precingular and postcingular plates are shorter; and the 1a plate is rectangular.

Blepharocysta paulsenii J. Schiller, 1937: 478, fig. 552a-i. (Fig. 2f)

Cell globose. Theca is smooth, densely perforated with pores. The sulcal lists are situated ventrally and not seen in dorsal view. Cell width 61 µm.

Morphological note: According to the description of Schiller (1937), the cells of the species are rounded; however, mistakenly, the 1a plate was not distinguished, and the apical pore was described as surrounded by a collar situated on the pentagonal apical plate orientated anterior-posteriorly narrowing towards the antapex (presently, this complex of plates is known as the apical pore complex (APC), the canal platelet

located between the APC and the narrow 1' plate, the 2' and 3' plates attached to the APC laterally, and the 1a plate situated dorsally). The sulcal lists are pictured as located ventrally (Schiller, 1937: fig. 552a, b, d, g, h) rather than ventrally-posteriorly as in *B. splendor-maris*).

Blepharocysta splendor-maris (Ehrenb.) Ehrenb., 1873: 4. (Fig. 2g-h, 4a-d)

Basionym: *Peridinium splendor-maris* Ehrenb., 1860.

Description. Cell ovoid, with two membranes located ventrally, closer to the antapex, parallel to the longitudinal axis of the cell, emerging posteriorly out of the cell body, which is visible in ventral view. Theca is smooth, sparsely perforated with pores. Cell length 56 µm, width 52 µm.

Literature: Stein, 1883*: pl. 7, fig. 17-19, pl. 8, fig. 3-5; Schütt, 1895*: 162, pl. 20, fig. 61; Okamura, 1907*: pl. 5, fig. 34a-d; Paulsen, 1908*: 93, fig. 126; Lebour, 1925*: 160, fig. 52c; Schiller, 1937*: 477, fig. 550; Nie, 1939*: 31, pl. 1, fig. 1-16, pl. 2, fig. 17-19, text-fig. 1, 2 (after Schiller, 1937); 1945*: fig. 12-14 (after Nie, 1939); Rampi, 1941*: 148, fig. 8, 9; Balech, 1963* (Bol. Inst. Biol. Mar., 2): 16, pl. 3, fig. 34-44; Abé, 1966*: 141, fig. 21-32 (as *Blepharocysta splendor-maris*); Wood, 1968*: 22, fig. 35; Steidinger, 1972*: pl. 5, map 5; Pesantes-Santana, 1978*: 6, pl. 2, fig. 6; Dodge, 1982*: 254, fig. 33H; Sournia, 1986*: fig. 190 (after Abé, 1966), 191a, b (after Rampi, 1941); Balech, 1988*: 125, pl. 52, fig. 16-19 partim; Carbonell-Moore, 1994a***: pl. 1, fig. 1; Steidinger & Tangen, 1996*: 533, pl. 7 (in figure legend as *Blepharocysta* sp.), 49; Konovalova, 1998*: 168, fig. 35, 36 (6a, b); Al-Kandari *et al.*, 2006**: 187, 336, pl. 39, fig. 0; Gárate-Lizárraga *et al.*, 2009**: 25, fig. 58; Omura *et al.*, 2012** ***: 127, fig. a-e; Almazán-Becerril *et al.*, 2016**: 84, fig. 201; Al-Yamani & Saburova, 2019**: 288, pl. 157, fig. a-i; Hernández-Becerril & Arce-Rocha, 2021** ***: 3, fig. 1-12.

Genus *Podolampas* F. Stein, 1883

Syn.: *Parrocelia* Gourret, 1883: 81, pl. 3, fig. 48, 48a.

Cells widely or narrowly pear-shaped, terminated anteriorly with a neck, short or long, and posteriorly with antapical spines (1 to 3). The hypotheca is shorter than the epitheca. The cingulum is somewhat descendant. Each of the postcingular plates has a double row of densely arranged well visible pores. The antapicals bear spines, each of them bordered with membranes (Balech, 1963, 1988). The thecal formula: Po, Pt, x, 3', 1a, 5'', 3c, 4-5s, 5''', 1'''' (Okolodkov, 2011). Kleptochloroplasts present in *P. bipes* and *P. reticulata* (Schweikert & Elbrächter, 2004).

Podolampas bipes F. Stein, 1883, pl. 8, fig. 6-8. (Fig. 1b, 3a, 4f-i)

Syn.: *Parrocelia ovata* Gourret, 1883: 82, pl. 3, fig. 48, 48a.

Description. Cell widely pear-shaped, somewhat compressed dorsoventrally, with a short, well separated apical horn, about 1.3-1.4 times longer than wide, with two long, slightly curved antapical spines, almost equal in length and bearing broad lists with smooth margins. Cell length 78-81 µm (102-105 µm with the antapical spines), width 43-58 µm. Two types of kleptochloroplasts are present (Fig. 4g, i).

Literature: Bütschli, 1885*: pl. 55, fig. 9a; Schütt, 1895*: pl. 19, fig. 56; Paulsen, 1908*: 92, fig. 125; Okamura, 1912*: 16, pl. 2, fig. 37; Lebour, 1925*: 160, fig. 52b; Schiller, 1937*: 474, fig. 544a, b (after Stein, 1883); Rampi, 1941*: 146, fig. 2, 5; Nie, 1942*: 56, pl. 1, fig. 1-14; Kiselev, 1950*: 250, fig. 434 (after Stein, 1883); Trégoubouff, 1957*: 119,

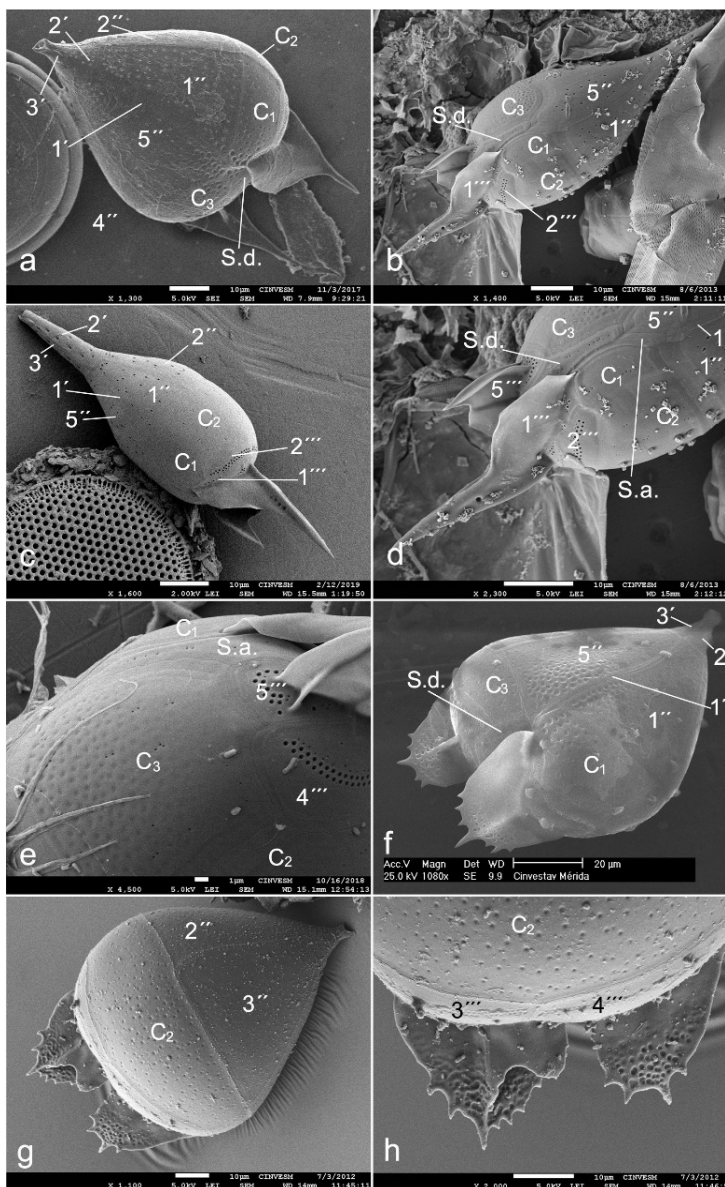


Figure 3. Scanning electron micrographs of the *Podolampas* species from the southern Gulf of Mexico (states of Veracruz and Yucatan): a – *P. bipes* (ventral-apical view), b–e – *P. palmipes* (b – ventral view, c – left-side view, d – posterior half of the cell, e – fragment of the posterior part of the cell in right-side-ventral view), f–h – *P. reticulata* (f – ventral view, g – dorsal view, h – posterior end of the cell in dorsal view). Symbols of the Kofoidian tabulation system: 1'–3' – apical plates, 1a – intercalary plate, 1''–5'' – precingular plates, C₁–C₃ – cingular plates, S.a. – sulcal anterior plate, S.d. – sulcal right plate, 1'''–5''' – postcingular plates, 1'''' – antapical plate. Scale bars: 10 µm in a–d, g and h; 1 µm in e; 20 µm in f.

pl. 27, fig. 16; Abé, 1966*: 150**, fig. 55–68; Yamaji, 1966*: 107, pl. 51, fig. 19; Steidinger *et al.*, 1967**: pl. 4, fig. a; Wood, 1968*: 119, fig. 362; Steidinger & Williams, 1970**: 60, pl. 35, fig. 125; Andreis & Andreoli, 1975** ***: 388, fig. 3, 9, 9A; Taylor, 1976* ***: 171, pl. 27, fig. 288, pl. 45, fig. 524; Dodge, 1985***: 117; Sourmia, 1986*: fig. 193 (after Balech, 1963); Balech, 1988*: 123, pl. 52, fig. 20, pl. 53, fig. 1, 2; Gárate-Lizárraga, 1988**: pl. 6, fig. 8; Hernández-Becerril, 1988a*** (Inv. Pesq. 52): 529, fig. 33, 34; Delgado & Fortuño, 1991* ***: 9, fig. 5U, pl. 25, fig. b; Carbonell-Moore, 1994a* ***: fig. 4I, 6I, 8H, pl. 1, fig.

9; Carbonell-Moore, 2004*: fig. 20, 29 (after Carbonell-Moore, 1994a); Licea *et al.*, 1995* ***: 77, pl. 8, fig. 11, pl. 22, fig. 3; Steidinger & Tangen, 1996***: 534, pl. 7; Konovalova, 1998*: 166, fig. 36 (3a, b); Dodge & Lee, 2000***: fig. 55; Schweikert & Elbrächter, 2004**: 615, fig. 1–6; Ojeda, 2005* ***: 159, lám. 31, fig. 1, lám. 57, fig. 4; Al-Kandari *et al.*, 2006**: 189, 336, pl. 39, fig. R; Esqueda-Lara & Hernández-Becerril, 2010**: 133, fig. 126a–c; Gómez *et al.*, 2010**: 214, fig. 1; Omura *et al.*, 2012** ***: 128, fig. a–f, non g–k; Al-Yamani & Saburova, 2019**: 290, pl. 158, fig. a–h; Yovera-Galvez *et al.*, 2020**: 167, fig. 228.

Podolampas elegans F. Schütt, 1895: pl. 18, fig. 57. (Fig. 1c, 4j-m)

Description. Cell narrowly pear-shaped, not compressed dorsoventrally, about 1.93 times longer than wide, with the epitheca much longer than the hypotheca. Epitheca is drawn into a long, not well separated apical horn. Hypotheca with two subequal antapical spines, the right one slightly longer. Cell length 81 µm (110 µm with the antapical spines), width 42 µm. Kleptochloroplasts are present (Fig. 4j, k, m).

Literature: Kofoid, 1909*: 48, pl. 3, fig. 1-7; Lebour, 1925*: 160, fig. 53; Schiller, 1937*: 475, fig. 546; Rampi, 1941*: 146, fig. 1, 4; Kiselev, 1950*: 262, fig. 435b (as *P. palmipes*; after Schütt, 1895); Gaarder, 1954*: 55, fig. 73a-e (after Kofoid, 1909); Trégouboff, 1957*: 119, pl. 27, fig. 17; Curl, 1959*: 306, fig. 125; Balech, 1963*: 6, pl. 1, fig. 1-7; 1988*: 124, pl. 53, fig. 7, 8, 12; Wood, 1963*: 50, fig. 186; Abé, 1966*: 149, fig. 52-54; Wood, 1968*: 119, fig. 364; Steidinger & Williams, 1970**: 60, pl. 36, fig. 127; Taylor, 1976*: 171, pl. 27, fig. 290, 281; Dodge, 1985***: 118; Sournia, 1986*: fig. 196 (after Balech, 1963); Gárate-Lizárraga, 1988**: pl. 6, fig. 11; Hernández-Becerril, 1988b** (Bot. Mar. 31): 433, fig. 33; Delgado & Fortuño, 1991***: 9, pl. 25, fig. a; Ojeda, 2005* **: 160, lám. 31, fig. 2; Gómez *et al.*, 2010***: 214, fig. 2, 3; Omura *et al.*, 2012***: 128, fig. a, b.

Podolampas palmipes F. Stein, 1883, pl. 8, fig. 9-11. (Fig. 1d, 3b-e, 4n-q)

Description. Cell narrowly pear-shaped, not compressed dorsoventrally, about 1.53-2.60 times longer than wide, with the epitheca much longer than the hypotheca. Epitheca is drawn into a long, not well separated apical horn (sometimes called neck in the literature). Hypotheca is very low, obtusely rounded posteriorly, with two long, broadly winged unequal spines, parallel or slightly divergent, the left spine being about twice as long as than the right one (a characteristic feature). Cell length 46-63 µm (88-95 µm with the antapical spines), width 24-30 µm. Hyaline cysts are observed for the first time (Fig. 4q). Kleptochloroplasts are present (Fig. 4o, q).

Literature: Bütschli, 1885*: pl. 55, fig. 96; Schütt, 1895*: pl. 18, fig. 58; Entz, 1905*: fig. 61-63; Paulsen, 1908*: 92, fig. 24; Okamura, 1912*: 16, pl. 2, fig. 36; Lebour, 1925*: 159, fig. 52a; Schiller, 1937*: 475, fig. 547a, b; Rampi, 1941*: 147, fig. 3, 6; Nie, 1942*: 57, pl. 1, fig. 15, 16; Margalef, 1948*: 50, fig. 3d; Kiselev, 1950*: 262, fig. 435a (after Stein, 1883), non b; Gaarder, 1954*: 57, fig. 74a, b; Wood, 1954*: 317, fig. 352a, b; Trégouboff, 1957: 119, pl. 27, fig. 19; Balech, 1963*: 12, pl. 2, fig. 20-27; Abé, 1966*: 147, fig. 45-51; Yamaji, 1966*: 18, pl. 51, fig. 18; Wood, 1968*: 119, fig. 365; Steidinger & Williams, 1970***: 60, pl. 35, fig. 128a, b; Andreis & Andreoli, 1975** ***: 388, fig. 1, 4; Taylor, 1976*: 171, pl. 27, fig. 278, 279, (286?); Dodge, 1982*: 254, fig. 33; Sournia, 1986*: fig. 194 (after Balech, 1963); Balech, 1988*: 124, pl. 52, fig. 21, pl. 53, fig. 3, 4; Delgado & Fortuño, 1991*: fig. 5V (after Margalef, 1967); Carbonell-Moore, 1994a***: pl. 1, fig. 8; Licea *et al.*, 1995***: 77, pl. 9, fig. 1; Steidinger & Tangen, 1996*: 534, pl. 50; Balech, 1988*: 124, pl. 52, fig. 21, pl. 53, fig. 3, 4; Gárate-Lizárraga, 1988***: pl. 6, fig. 5; Konovalova, 1998*: 166, fig. 36 (5a, b); Avancini *et al.*, 2006* **: 375, fig. A, B (after Balech, 1980); Ojeda, 2005* **: 161, lám. 32, fig. 1; Al-Kandari *et al.* 2006***: 188, 336, pl. 39, fig. P-Q; Gómez *et al.*, 2010***: 214, fig. 4; Esqueda-Lara & Hernández-Becerril, 2010***: 134, fig. 127a, b; Omura *et al.*, 2012** ***: 128, fig. a-f; Almazán-Becerril *et al.*, 2016***: 84, fig. 202; Al-Yamani & Saburova, 2019** ***: 290, pl. 159, fig. a-e; Yovera-Galvez *et al.*, 2020***: 167, fig. 229.

Podolampas reticulata Kof., 1907: 187, pl. 2, fig. 11. (Fig. 1e, 3f-h, 4r-u)

Syn.: *Podolampas bipes* f. *reticulata* (Kof.) J. Schiller, 1937: 474, fig. 545; *Podolampas bipes* var. *reticulata* Taylor, 1976: 171, pl. 27, fig. 287.

Description. Cell widely pear-shaped, somewhat compressed dorsoventrally, with a short neck, about 1.2-1.3 times longer than wide, with two long, slightly curved antapical spines, almost equal in length and bearing broad lists with serrated margins. Cell length 83-85 µm (102-105 µm with the antapical spines), width 68-70 µm. Kleptochloroplasts present (Figs. 4r-q).

Literature: Schiller, 1937*: 474, fig. 545 (after Kofoid, 1907; as *P. bipes* f. *reticulata*); Wood, 1954*: 317, fig. 251b (as *P. bipes* f. *reticulata*); Balech, 1963*: 11, pl. 2, fig. 15-19; Abé, 1966*: 150, fig. 60-62 (as *P. bipes* of *reticulata*-type or *reticulata*-form); Steidinger & Williams, 1970***: 60, pl. 36, fig. 126a, b; Balech, 1988*: 124, pl. 53, fig. 5, 6, 11; Hernández-Becerril, 1988a*** (Inv. Pesq. 52): 530, fig. 35 (misspelled as *P. reticulada*); Carbonell-Moore, 1994a***: pl. 1, fig. 10; 2004***: fig. 4; Esqueda-Lara & Hernández-Becerril, 2010***: 135, fig. 128a-c; Omura *et al.*, 2012** ***: 128, fig. g-k (as *P. bipes*); Yovera-Galvez *et al.*, 2020***: 168, fig. 230.

Podolampas spinifera Okamura, 1912: 17, pl. 2, fig. 35. (Fig. 1f, 4v-y)

Description. Cell very narrowly drop-shaped, not compressed dorsoventrally, about 4.5-6 times longer than wide. Epitheca is drawn into a long, not separated apical horn, bearing a noticeable spine (a characteristic feature), Hypotheca with one narrowly winged, long (37-45 µm long), straight spine (another characteristic feature of the species). Cell length 77-102 µm (114-147 µm with the antapical spines), width 68-70 µm.

Morphological note. Unlike other *Podolampas* species that have one left-ventral and two dorsal postcingulars, *P. spinifera* has two lateral and one dorsal postcingular (Balech, 1963).

Literature: Pavillard, 1916*: 41, pl. 2, fig. 6, 7; Schiller, 1937*: 476, fig. 548 (after Pavillard, 1916); Rampi, 1939*: 468, fig. 17; 1941*: 148, fig. 10; Trégouboff, 1957*: 119, pl. 27, fig. 18; Wood, 1963*: 50, fig. 187; Balech, 1963*: 14, pl. 2, fig. 28-33; Abé, 1966*: 145, fig. 39-44; Yamaji, 1966*: 107, pl. 51, fig. 17; Steidinger *et al.*, 1967***: pl. 4, fig. b; Wood, 1968*: 120, fig. 366; Steidinger & Williams, 1970***: 60, pl. 36, fig. 129; Andreis & Andreoli, 1975** ***: 388, fig. 2, 7, 8; Taylor, 1976*: 172, pl. 27, fig. 284, 285; Sournia, 1986*: fig. 195 (after Balech, 1963); Balech, 1988*: 125, pl. 52, fig. 22, pl. 53, fig. 9, 10, 13; Hernández-Becerril, 1988b** (Bot. Mar. 31): 433, fig. 32; Delgado & Fortuño, 1991*: fig. 5W (after Margalef, 1967); Carbonell-Moore, 1994a***: pl. 1, fig. 6; Konovalova, 1998*: 166, fig. 36 (4a, b); Ojeda, 2005* **: 161, lám. 32, fig. 2, lám. 57, fig. 3; Esqueda-Lara & Hernández-Becerril, 2010***: 136, fig. 129a, b; Gómez *et al.*, 2010***: fig. 5, 6; Omura *et al.*, 2012** ***: 128, fig. a-d. Occasionally, in the literature the species name is misspelled as *Podolampas spinifer*.

DISCUSSION

The present study represents the most complete report of the podolampadaceans sampled from Mexico. The podolampadaceans found in Mexican coastal waters are known from other tropical regions. However, few of them exclusively from the Mexican Pacific have been do-

cumented with micrographs (Licea *et al.*, 1995; Hernández-Becerril, 1988a, b; Esqueda-Lara & Hernández-Becerril, 2010; Almazán-Becerril *et al.*, 2016; Hernández-Becerril & Arce-Rocha, 2021). *Podolampas antarctica* is probably the only exception in the genus; eight cells of this species were found in the Weddell Sea, the Antarctic Ocean (Balech & El-Sayed, 1965). The podolampadaceans, in general, should no longer be regarded as exclusively warm-water species; however, the maximum species richness has been reported from the tropics (Carbonell-Moore, 1994b). The *Podolampas* species examined in the present study from the literature (four publications) have been found mainly between 10.17°C and 28.60°C (Carbonell-Moore, 1994b); the minimum temperature (2.44°C) was registered for *P. palmipes* (Balech, 1988). In Bahía de la Paz, the *Podolampas* and *Blepharocysta* species occurred at temperatures of 16 to 30°C. Four species of *Podolampas* and two *Blepharocysta* species were identified at the two sampling stations from Bahía de La Paz (Fig. 4a-y).

We found only two genera, *Podolampas* and *Blepharocysta*, and the rest of the Podolampadaceae appear to be characteristic of oceanic waters. Until the present, *Podolampas* species have not been problematic in their identification (although sometimes *P. elegans* and *P. palmipes* are not well distinguished based only on cell shape). Among *Blepharocysta* species, only *B. splendor-maris* is widely known and has been reported from Mexican waters. There are several *Blepharocysta* species as yet unidentified. For example, apart from *B. okamurae* and *B. splendor-maris*, Omura *et al.* (2012) report four unidentified species of this genus from the Western Pacific. Morphological differences between *Blepharocysta* species are not as pronounced as between *Podolampas* species. Our identification of *Blepharocysta* species are based exclusively on SEM observations and should be considered tentative due to rare cells not examined in all views, which resulted in some limitations, such as the impossibility of characterizing the 1a plate and the sulcal lists. The structure of thecae, including the relative number of pores and their arrangement, does not appear to be a reliable feature because it is known to vary depending on the cell age. Detailed analysis of the thecae allow us to differentiate between *B. splendor-maris*, *B. striata* and *B. okamurae* as had been done by Abé (1966). Furthermore, Trypan Blue did not allow us to distinguish plates in most examined species such as in the genus *Protoperidinium* Bergh. Apart from this, in general, the original descriptions of *Blepharocysta* species are incomplete and deficient to such an extent that it is difficult to compare their morphology.

Based on the number of the antapical spines and their relation to the posterior sulcal plate and the antapical plates, Abé (1966) considered it reasonable to subdivide the genus *Podolampas* into two groups, *spinifera* (includes only *P. spinifera*) and *bipes* (includes the remainder of the *Podolampas* species), and excluded the possibility of dividing the genus into two. Regarding the separation between *P. bipes* and *P. reticulata*, we followed Kofoid (1907) and Balech (1988), although the latter author separated them with some doubt. Balech (1988) stressed that the main differences between the species are in the morphology of the antapical spines, sulcal and postcingular plates, and they are constant. The poorly described *P. curvatulus* is another monospiny species that might be grouped with *P. spinifera*.

Various taxonomic groups of non-photosynthetic organisms possess plastids, and dinoflagellates are among them (Fast *et al.*, 2001; Yoon *et al.*, 2002). Two species of *Blepharocysta* and one of *Podolampas* have been regarded as heterotrophs (Steidinger & Williams, 1970; Car-

bonell-Moore, 2004; Schweikert & Elbrächter, 2004; Gárate-Lizárraga *et al.*, 2009). In this study, we found several cells of *B. splendor-maris* with an attached pigment mass, probably indicating the first stages of extracellular digestion. Kleptoplasty has been hypothesized to represent either a mechanism permitting functional flexibility or perhaps an early evolutionary stage in the permanent acquisition of chloroplasts (Gast *et al.*, 2007). These authors mention that the nature of the relationship between the dinoflagellate and its plastids appears to be more than kleptoplasty, but not yet an endosymbiosis.

Based on transmission electron microscopic studies, the presence of kleptochloroplasts, also known as kleptoplasts, have been previously proven only for *P. bipes* and *P. reticulata* (Schweikert & Elbrächter, 2004). Dinoflagellate chloroplasts observed in previous investigations were shown to be autofluorescent endocytobionts from the class Dictyochophyceae, most probably from the order Pedinellales. Due to methodological limitations, detection of kleptochloroplasts in all podolampadacean species in this study is tentative (Fig. 4a, b, g-k, m, o, q-u, w, x); however, our observations of living cells from the Gulf of California allowed us to suggest the presence of plastids as small bodies distributed irregularly around the nucleus. This implies that at least the *Blepharocysta* and *Podolampas* species should be functionally considered as phytoplankton *sensu stricto*.

In the Central Equatorial Pacific, Carbonell-Moore (1994b) found the highest abundances of podolampadacean cells between 100 m and 150 m depth. To obtain cells of other podolampadacean genera than *Podolampas* and *Blepharocysta*, offshore sampling during oceanographic cruises is necessary. Moreover, other factors should be considered. According to Carbonell-Moore (1994b), the apparent paucity of podolampadaceans in the literature is due to inadequate sampling procedures: mesh size larger than the cell size of most podolampadaceans, insufficient filtration volumes, and/or inappropriate sampling depths (most historical collections are based on surface tows).

Before the mid-1950s, Rampi (1941) had examined the theca of *Podolampas* in the most detail; he distinguished 19 thecal plates, while other authors could distinguish only 16. However, he misinterpreted some plates, considering that *Podolampas* species have no cingular plates (probably due to the absence of a transverse equatorial or sub-equatorial furrow); therefore, the thecal formula he suggested was 2', 1a, 6", 0c, 3s, 3"', 4'''. Balech (1954) found more plates (in total, 23), and proposed another interpretation of the thecal formula: 3', 1a, 5", 3c, 5s, 3"', 3''', based on the thecal morphology of *P. bipes*, *P. elegans* and *P. palmipes*. Incidentally, long before this publication, Schütt (1895) considered a postmedian series of three plates as representing the girdle.

SSU rDNA phylogenies showed that podolampadaceans and the genus *Roscoffia* Balech with the only marine sand-dwelling species *R. capitata* Balech form a well-supported monophyletic group, composed of two subclades: (1) *R. capitata* and *Blepharocysta* sp., and (2) the four examined *Podolampas* species (Gómez *et al.*, 2010). However, there have been no investigations of the podolampadaceans at the infraspecific, species and generic levels. The morphological diversity of *Blepharocysta* cells illustrated in the present study (Fig. 2a-h) gives us serious doubts as to the correct species identification. The scarcity of SEM observations is another obstacle for interpreting variability in morphological features of the theca resulting from cell age or environmental factors. We expect that molecular techniques can also reveal the real species diversity within the genus *Blepharocysta*, confirming the

validity of some doubtful species and the phylogenetic distance among *Podolampas* species, in particular, between the morphologically close *P. elegans* and *P. palmipes* and between *P. bipes* and *P. reticulata*, as well

as between the aforementioned two intrageneric groups recognized by Abé (1966). From its morphology, *P. spinifera* appears to be more separated from the others and probably includes cryptic species.



Figure 4. Light microphotographs of the Podolampadaceae species from Bahía de La Paz, including Alfonso Basin, southern Gulf of California: a-d – *Blepharocysta splendormaris* (a, b – lateral view, c – ventral view, showing precingular and cingular plates, d – left-side view), e – *Blepharocysta* sp. in right-side view, f-i – *Podolampas bipes* (f, g, i – ventral view, h – dorsal view), j-m – *P. elegans* (j-l – ventral view, m – dorsal view), n-q – *P. palmipes* (n, o, q – ventral view, p – dorsal view, q – hyaline cyst), r-u – *P. reticulata* (r – ventral view, s-u – dorsal view), v-y – *P. spinifera* (v-y – ventral view). N – nucleus; V – vacuole; yellow arrows indicate kleptochloroplasts. c, f, p – empty thecae. e, l – fixed with Lugol; the rest are living cells.

ACKNOWLEDGMENTS

We thank the personnel of the Acuario de Veracruz for logistic support for sampling in the PNSAV in Veracruz, Fernando Aguirre-Bahena for collecting phytoplankton samples from Alfonso Basin, Jorge A. Herrera-Silveira from Centro de Investigación y de Estudios Avanzados (CINVESTAV-IPN, Unidad Mérida, Mérida, Yucatan, Mexico) for financial and logistic support for sampling in the northern Yucatan coastal waters, Fany del C. Merino-Virgilio for hospitality and technical support in the laboratory at CINVESTAV-IPN, Natalia A. Okolodkova (Mexico City, Mexico) for technical help with the illustrations, Nicolas Chomérat (IFREMER, Station de Biologie Marine, Concarneau, France) for valuable advice on the nomenclature of the family, Kenneth N. Mertens (IFREMER, Station de Biologie Marine, Concarneau, France) and Consuelo Carbonell-Moore (Oregon State University, OR, USA) for helping us to differentiate between *Blepharocysta* species, and Marcia M. Gowing (Seattle, WA, USA), who kindly improved the writing style. Eduardo Morteo-Ortiz (the project financed by the “Programa para el Mejoramiento del Profesorado” (PROMEP) in 2006-2007) and Horacio Pérez-España (the project “Fuentes orgánicas de carbono y nitrógeno y su función sobre la estructura trófica en el Sistema Arrecifal Veracruzano” financed by the program Fondos Mixtos, Consejo Nacional de Ciencia y Tecnología (FOMIX CONACYT) - Veracruz in 2007-2010) from the ICIMAP-UV are also thanked for providing logistic support. The help of Dora A. Huerta-Quintanilla and Ana R. Cristóbal-Ramos from CINVESTAV-IPN with the scanning electron microscopes is very much appreciated. Patricia Quintana-Owen from CINVESTAV-IPN is thanked for financial support for SEM observations (projects FOMIX-Yucatán No. 108160 and CONACYT LAB-2009-01 No. 123913, Mexico). The financial support of Dirección General de Investigaciones de la Universidad Veracruzana, Mexico (the project “Algas de la zona arrecifal Veracruzana, Golfo de México, con énfasis en las algas rojas, diatomeas y dinoflagelados”; project leader: YBO) in 2007-2009 is also appreciated. The project was partially funded by Instituto Politécnico Nacional, Mexico (grants SIP-20160037, SIP-2014118, SIP-20141095, SIP-20180012 and SIP-20220515). IGL is a COFAA fellow.

REFERENCES

- ABÉ, T. H. 1966. The armoured Dinoflagellata: I. Podolampidae. *Publications of the Seto Marine Biological Laboratory* 14 (2): 129-154.
- AL-KANDARI, M., F. Y. AL-YAMANI & K. AL-RIFAIE. 2006. *Marine phytoplankton atlas of Kuwait's waters*. Kuwait Institute for Marine Research, Safat, Kuwait. 350 p.
- ALMAZÁN-BECERRIL, A., J. A. AKÉ CASTILLO, E. GARCÍA-MENDOZA, Y. A. SÁNCHEZ-BRAVO, S. ESCOBAR-MORALES & F. VALADEZ-CRUZ. 2016. Catálogo de microalgas de Bahía de Todos Santos, Baja California. CICESE, Ensenada, Baja California, México. 132 p.
- AL-YAMANI, F. Y. & M. S. SABUROVA. 2019. *Marine phytoplankton of Kuwait's waters. Vol. I. Cyanobacteria, dinoflagellates, flagellates*. Kuwait Institute for Marine Research, Safat, Kuwait. 467 p.
- ANDREIS, C. & C. ANDREOLI. 1975. SEM survey on Mediterranean species of *Podolampas*. *Giornale Botanico Italiano* 109: 387-397.
- AVANCINI, M., A. M. CICERO, I. DI GIROLAMO, M. INNAMORATI, E. MAGALETTI & T. SERTORIO ZUINI. 2006. *Guida al riconoscimento del plancton dei mari italiani. Vol. I. Fitoplancton*. Ministero dell'Ambiente della Tutela del Territorio e del Mare – DPN, Istituto Centrale per la Ricerca Scientifica e Tecnologica Applicata al Mare, Roma, Italy. 505 p.
- BALECH, E. 1954. Sur la tabulation de *Podolampas* et *Oxytoxum*. In: 8ème Congrès International de Botanique, Rapports et Communications parvenues avant le Congrès, Paris, France, Section 17: 114-116.
- BALECH, E. 1963. La familia Podolampacea (Dinoflagellata). *Boletín del Instituto de Biología Marina (Mar del Plata, Argentina)* 2: 1-30.
- BALECH, E. 1980. On thecal morphology of dinoflagellates with special emphasis on circular and sulcal plates. *Anales del Centro de Ciencias del Mar y Limnología* 7 (1): 57-67. <http://biblioweb.tic.unam.mx/cienciasdelmar/centro/1980-1/articulo85.html>
- BALECH, E. 1988. *Los dinoflagelados del Atlántico Sudoccidental*. Ministerio de Agricultura Pesca y Alimentación, Publicaciones Especiales del Instituto Español de Oceanografía 1, Madrid, España. 310 p.
- BALECH, E. & S. Z. EL-SAYED. 1965. Microplankton of the Weddell Sea. In: Llano, G. A. (Ed.). *Biology of the Antarctic Seas II, vol. 5*. Antarctic Research Series. American Geophysical Union of the National Academy of Sciences – National Research Council Publication 1297, Washington, D.C., Garamond/Pridemark Press, Inc., Baltimore, MD, USA, pp. 107-124.
- BARREIRO-GÜEMES, M. T. 1967. Contribución al conocimiento de los dinoflagelados del Golfo de California, México. Tesis de Licenciatura. Facultad de Ciencias, Universidad Nacional Autónoma de México, México, D.F., México. 39 p., lám. 1-11.
- BRUMMITT, R. K. & C. E. POWELL (eds.). 1992. *Authors of plant names. A list of authors of scientific names of plants with recommended standard forms of their names, including abbreviations*. Royal Botanic Gardens, Kew, U.K. 732 p.
- BÜTSCHLI, O. 1885. *Protozoa. Bd 1*. H.G. Bronn's Klassen und Ordnungen des Thier-Reichs, wissenschaftlich dargestellt in Wort und Bild. C.F. Winter'sche Verlagshandlung, Leipzig, Heidelberg, Germany, pp. 865-1088, pl. 39-55.
- CARBONELL-MOORE, M. C. 1994a. On the taxonomy of the family Podolampadaceae Lindemann (Dinophyceae) with descriptions of three new genera. *Review of Palaeobotany and Palynology* 84: 73-99.
- CARBONELL-MOORE, M. C. 1994b. On the biogeography of the family Podolampadaceae Lindemann (Dinophyceae) – vertical and latitudinal distribution. *Review of Palaeobotany and Palynology* 84: 23-44.
- CARBONELL-MOORE, M. C. 2004. On the taxonomical position of *Lessardia* Saldarriaga et Taylor within the family Podolampadaceae Lindemann (Dinophyceae). *Phycological Research* 52: 340-345.
- CURL, H., JR. 1959. The phytoplankton of Apalachee Bay and the northeastern Gulf of Mexico. *Publications of the Institute of Marine Science, The University of Texas, Port Aransas, Texas, USA* 6: 277-320.
- DELGADO, M. & J.-M. FORTUÑO. 1991. Atlas de fitoplancton del Mar Mediterráneo. *Scientia Marina* 55, supl. 1: 1-133.
- DODGE, J. D. 1982. *Marine dinoflagellates of the British Isles*. Her Majesty's Stationery Office, London, UK. 303 p.

- DODGE, J. D. 1985. *Atlas of dinoflagellates: a scanning electron microscope survey*. Farrand Press, London, UK. vii+119 p.
- DODGE, J. D. & J. J. LEE. 2000. Phylum Dinoflagellata Bütschli, 1885. In: Lee, J. J., G. F. Leedale & P. Bradbury (Eds.). *An illustrated guide to the Protozoa*. 2nd ed. Organisms traditionally referred to as Protozoa, or newly discovered groups. Society of Protozoologists, Allen Press Inc., Lawrence, KS, USA, pp. 656-689.
- EHRENBURG, C. G. 1873. Die das Funkeln und Aufblitzen des Mittelmeeres bewirkenden unsichtbar kleinen Lebensformen. *Festschrift zur Feier des Hundertjährigen Bestehens der Gessellschaft Naturforschender Freunde zu Berlin*, Berlin, Ferd. Dümmlers Verlagsbuchhandlung, Germany, pp. 1-4, pl. 1.
- ENTZ, G., JR. 1905. Beiträge zur Kenntnis der Peridineen. *Mathematische und naturwissenschaftliche Berichte aus Ungarn* 20: 96-144, 6 Taf., 66 Fig.
- ESQUEDA-LARA, K. & D. U. HERNÁNDEZ-BECERRIL. 2010. *Dinoflagelados microplanctónicos marinos del Pacífico central de México (Isla Isabel, Nayarit y costas de Jalisco y Colima)*. Instituto de Ciencias del Mar y Limnología, Universidad Nacional Autónoma de México, México, D.F., México. x+206 p.
- FAST, N. M., J. C. KISSINGER, D. S. ROOS & P. J. KEELING. 2001. Nuclear encoded, plastid-targeted genes suggest a single common origin for apicomplexan and dinoflagellate plastids. *Molecular Biology and Evolution* 18: 418-426.
- FENSOME, R. A., F. J. R. TAYLOR, G. NORRIS, W. A. S. SARJEANT, D. I. WHARTON & G. L. WILLIAMS. 1993. *A classification of living and fossil dinoflagellates*. Micropaleontology, Special Publication Number 7, Sheridan Press, Hanover, PA, USA. viii+351 p.
- GAARDER, K. R. 1954. *Dinoflagellatae from the "Michael Sars" North Atlantic Deep-Sea Expedition 1910*, 2 (3), University of Bergen, John Grieg, Bergen, Norway. 62 p., 5 tables.
- GÁRATE-LIZÁRRAGA, I. 1988. Un análisis de la estructura de las asociaciones microfitoroplanctónicas de la región central del Golfo de California y su distribución espacial en el otoño de 1986. Tesis de Licenciatura. Universidad Autónoma de Baja California Sur, La Paz, Baja California Sur, México. 121 p.
- GÁRATE-LIZÁRRAGA, I., C. J. BAND-SCHMIDT, F. AGUIRRE-BAHENA & T. GRAYEB DEL ÁLAMO. 2009. A multi-species microalgae bloom in Bahía de La Paz, Gulf of California, Mexico (June 2008). *CICIMAR Océánides* 24 (1): 1-15.
- GÁRATE-LIZÁRRAGA, I., C. J. BAND-SCHMIDT, G. VERDUGO-DÍAZ, M. S. MUÑETÓN-GÓMEZ & E. F. FÉLIX-PICO. 2007. Dinoflagelados (Dinophyceae) del Sistema Lagunar Magdalena-Almejas. En: Funes-Rodríguez, R., J. Gómez-Gutiérrez & R. Palomares-García (Eds.). *Estudios ecológicos en Bahía Magdalena*. Comité Editorial del IPN, México, D.F., México, pp. 145-175.
- GÁRATE-LIZÁRRAGA, I. & R. GONZÁLEZ-ARMAS. 2015. First record of the dinoflagellate *Oxytoxum caudatum* (Peridinales: Oxytoxaceae) in the Gulf of California. *Revista de Biología Marina y Oceanografía* 50 (3): 583-586.
- GAST, R. J., D. M. MORAN, M. R. DENNETT, D. A. CARON. 2007. Kleptoplasty in an Antarctic dinoflagellate: caught in evolutionary transition? *Environmental Microbiology* 9: 39-45.
- GILBERT, J. Y. & W. E. ALLEN. 1943. The phytoplankton of the Gulf of California obtained by the "E.W. Scripps" in 1939 and 1940. *Journal of Marine Research* 5 (Contributions - Scripps Institution of Oceanography, New Series 183): 89-110.
- GÓMEZ, F., D. MOREIRA & P. LÓPEZ-GARCÍA. 2010. Molecular phylogeny of the dinoflagellates *Podolampas* and *Blepharocysta* (Peridinales, Dinophyceae). *Phycologia* 49 (3): 212-220.
- GONZÁLEZ-VILLALOBOS, I. 1971. Contribución al estudio de los dinoflagelados marinos de la zona nerítica comprendida entre Guaymas, Son. y la Boca de Teacapán, Sin. Tesis de Licenciatura. Escuela Nacional de Ciencias Biológicas, Instituto Politécnico Nacional, México, D.F., México. 116 p.
- GOURRET, P. 1883. Sur les Péridiniens du Golfe de Marseille. *Annales du Musée d'Histoire Naturelle de Marseille - Zoologie* 1 (8), pp. 1-144, tables 1-4.
- GUIRY, M. D. & G. M. GUIRY. 2022. *AlgaeBase. World-wide electronic publication*. National University of Ireland, Galway. Available online at: <http://www.algaebase.org> (searched on 21 May 2022)
- HALLEGRAEFF, G. M. & S. W. JEFFREY. 1984. Tropical phytoplankton species and pigments on continental shelf waters of North and Northwest Australia. *Marine Ecology Progress Series* 20: 59-74. <https://www.int-res.com/articles/meps/20/m020p059.pdf>
- HERNÁNDEZ-BECERRIL, D. U. 1988a. Observaciones de algunos dinoflagelados (Dinophyceae) del Pacífico Mexicano con microscopios fotónico y electrónico de barrido. *Investigaciones Pesqueras* 52 (4): 515-529.
- HERNÁNDEZ-BECERRIL, D. U. 1988b. Planktonic dinoflagellates (except *Ceratium* and *Protoperdinium*) from the Gulf of California and off the coasts of Baja California. *Botanica Marina* 31: 423-435.
- HERNÁNDEZ-BECERRIL, D. U. & G. ARCE-ROCHA. 2021. Morphology of two species of the thecate dinoflagellate genus *Blepharocysta* (Dinophyta) from the tropical Mexican Pacific. *Revista Mexicana de Biodiversidad* 92:e923826. DOI: 10.22201/ib.20078706e.2021.92.3826
- KISELEV, I. A. 1950. *Thecate flagellates (Dinoflagellata) of the seas and freshwater reservoirs of the USSR*. Izdatelstvo AN SSSR (USSR Academy of Sciences Publishing House). Moscow, Leningrad, USSR. 280 p. (in Russian).
- KOFOID, C. A. 1907. Reports on the scientific results of the Expedition to the Eastern Pacific, in charge of Alexander Agassiz, by the U.S. Fish. Commission Steamer "Albatross", from October, 1904, to March, 1905, Lieut. Commander L. M. Garreett, U.S.N., commanding. IX. New species of dinoflagellates. *Bulletin of the Museum Comparative Zoology at Harvard College* 50 (6): 161-207, plates 1-17.
- KOFOID, C. A. 1909. The morphology of the skeleton of *Podolampas*. *Archiv für Protistenkunde* 16: 48-62.

- KONOVALOVA, G. V. 1998. *Dinoflagellatae (Dinophyta) of the Far Eastern seas of Russia and adjacent waters of the Pacific Ocean*. Dalnauka, Vladivostok, USSR. 300 p. (in Russian).
- LEBOUR, M. V. 1925. *The dinoflagellates of Northern Seas*. The Marine Biological Association of the United Kingdom, Plymouth, UK. 250 p.
- LICEA, S., J. L. MORENO, H. SANTOYO & G. FIGUEROA. 1995. *Dinoflageladas del Golfo de California*. Universidad Autónoma de Baja California Sur, Secretaría de Educación Pública – Fondo para la Modernización de la Educación Superior, Programa Interdisciplinario e Interinstitucional Mar de Cortés, La Paz, B.C.S., México. xii+165 p.
- MARGALEF, R. 1948. Fitoplancton nerítico de la Costa Brava en 1947-48. *Publicaciones del Instituto de Biología Aplicada* 5: 41-51.
- MARGALEF, R. 1967. Las algas inferiores. In: Ginés, H. & R. Margalef (Eds.). *Ecología marina*. Fundación La Salle de Ciencias Naturales, Caracas, Venezuela, pp. 213-272.
- MERTENS, K. N., M. C. CARBONELL-MOORE, N. CHOMÉRAT, G. BILLEN, S. BOULBEN, L. GUILLLOU, S. ROMAC, I. PROBERT, A. ISHIKAWA & E. NÉZAN. In press. Morpho-molecular analysis of podolampadacean dinoflagellates (Dinophyceae) with description of two new genera. *Phycologia*.
- NIE, D. 1939. Dinoflagellata of the Hainan Region, II. On the thecal morphology of *Blepharocysta*, with a description of a new species. *Contributions from the Biological Laboratory of the Science Society of China, Zoological Series* 13 (3): 23-39.
- NIE, D. 1942. Dinoflagellata of the Hainan Region, IV. On the thecal morphology of *Podolampas*, with descriptions of species. *Sinensia* 13 (1-6): 53-60.
- NIE, D. 1945. Sinodiniidae, a new family of Peridiniida (Protozoa, Dinoflagellata). *Transactions of the American Microscopical Society* 64 (3): 196-202.
- OJEDA, A. 2005. *Dinoflagelados de Canarias: estudio taxonómico y ecológico*. Monografías LXV. Instituto de Estudios Canarios, Tenerife, Islas Canarias, España. 301 p.
- OKAMURA, T. 1907. An annotated list of plankton microorganisms of the Japanese coast. *Annotationes Zoologicae Japonenses* 6: 125-151, pl. 3-6.
- OKAMURA, T. 1912. Plankton organisms from bonito fishing grounds. *Report of Imperial Bureau of Fisheries, Scientific Investigations* 1: 1-35, 5 pl.
- OKOLODKOV, Y. B. 2011. Dinoflagellata (Bütschli) Fensome, Taylor, Norris, Sarjeant, Wharton et Williams, 1993. In: Karpov, S. A. (Ed.). *Protista, part 3. Guide-book on zoology*. KMK Scientific Press Ltd., St. Petersburg, Moscow, Russia, pp. 7-119, color figures 8, 9, 11, 12, 14, 15, 17, 22, 31, 33, 37 (in Russian).
- OKOLODKOV, Y. B. & I. GÁRATE-LIZÁRRAGA. 2006. An annotated checklist of dinoflagellates (Dinophyceae) from the Mexican Pacific. *Acta Botanica Mexicana* 72: 1-154.
- OMURA, T., M. IWATAKI, V. M. BORJA, H. TAKAYAMA & Y. FUKUYO. 2012. Marine phytoplankton of the Western Pacific. Kouseisha Kouseikaku Co., Ltd., Tokyo, Japan. 160 p.
- PAULSEN, O. 1908. *Peridinales. Nordisches Plankton. Botanischer Teil*. Verlag von Lipsius & Tischer, Kiel, Leipzig, Germany. 124 p.
- PAVILLARD, J. 1916. Recherches sur les péridiniens du Golfe du Lion. *Travaux de l'Institut de Botanique de l'Université de Montpellier, Série Mixte, Mémoire* 4: 9-70, pl. 1-3.
- PESANTES-SANTANA, F. 1978. Dinoflagelados del fitoplancton del Golfo de Guayaquil. *Publicaciones del Instituto Oceanográfico, Armada del Ecuador, Guayaquil, Ecuador* 2 (2): 1-98.
- RAMPI, L. 1939. Se qualche Peridinea rara, nuova o curiosa nel fitoplancton del Mare Ligure. *Nuovo Giornale Botanico Italiano, n. s.* 46 (3): 456-469.
- RAMPI, L. 1941. Ricerche sul fitoplancton del Mare Ligure – 5, Le podolampacee delle acque di Sanremo. *Annali del Museo Civico di Storia Naturale di Genova* 61: 141-152.
- SALDARRIAGA, J. F., B. S. LEANDER, F. J. R. TAYLOR & P. J. KEELING. 2003. *Les-sardia elongata* gen. et sp. nov. (Dinoflagellata, Peridinales, Podolampaceae) and the genus *Roscoffia*. *Journal of Phycology* 39: 368-378.
- SCHILLER, J. 1937. *Dinoflagellatae (Peridineae). Teil 2*. Akademische Verlagsgesellschaft M.B.H., Leipzig, Germany. 590 p.
- SCHÜTT, F. 1895. *Die peridineen der plankton expedition. Ergebnisse der Plankton-Expedition der Humboldt-Stiftung* 4: 1-170, 27 pl.
- SCHWEIKERT, M. & M. ELBRÄCHTER. 2004. First ultrastructural investigations of the consortium between a phototrophic eukaryotic endosymbiont and *Podolampas bipes* (Dinophyceae). *Phycologia* 43 (5): 614-623.
- SILVERBERG, N., F. AGUIRRE-BAHENA, S. AGUÍNIGA, & N. ROMERO. 2006. Flujo vertical de materia particulada en la Cuenca Alfonso, Bahía de La Paz, durante el año 2002. *Ciencias Marinas* 32 (1A): 73-82.
- SOURNIA, A. 1986. *Atlas du phytoplancton marin. Vol. 1: Introduction, Cyanophycées, Dictyochophycées, Dinophycées et Raphidophycées*. Éditiones du CNRS, Paris, France. 219 p.
- STEIDINGER, K. A. 1972. Dinoflagellate species reported from the Gulf of Mexico and adjacent coastal areas (compiled 1971). In: El-Sayed, S. Z., W. M. Sackett, L. M. Jeffrey, A. D. Fredericks, R. P. Saunders, P. S. Conger, G. A. Fryxell, K. A. Steidinger & S. A. Earle. *Chemistry, primary productivity, and benthic algae of the Gulf of Mexico. Serial atlas of the marine environment – folio 22*. American Geographical Society, New York, NY, USA, pp. 23-29, pl. 5: Dinoflagellates.
- STEIDINGER, K. A., J. T. DAVIS & J. WILLIAMS. 1967. *A key to the marine dinoflagellate genera of the west coast of Florida*. Florida Board of Conservation Marine Laboratory, St. Petersburg, FL, USA. vi+45 p., 9 pl.
- STEIDINGER, K. A. & K. TANGEN. 1996. Dinoflagellates. In: Tomas, C. R. (Ed.). *Identifying marine phytoplankton*. Academic Press, Inc., San Diego, CA, USA, pp. 387-589.
- STEIDINGER, K. A. & WILLIAMS, J. 1970. *Dinoflagellates*. Memoirs of the Hourglass Cruises 2. Marine Research Laboratory, Florida Department of Natural Resources, St. Petersburg, FL, USA. 251 p., pl. 1-45.

- STEIN, F. R. 1883. *Der Organismus der Infusionsthier nach eigenen Forschungen in systematischer Reihenfolge bearbeitet*. III Abteilung. II. Hälfte. Die Naturgeschichte der arthrodelen Flagellaten. Leipzig, Germany. 30 p., 25 pl.
- TAYLOR, F. J. R. 1976. Dinoflagellates from the International Indian Ocean Expedition. A report on material collected by the R. V. "Anton Bruun" 1963-1964. *Bibliotheca Botanica* 132: 1-234, 46 pl.
- TRÉGOUBOFF, G. 1957. Dinoflagellata (Peridiniaceae). In: Trégouboff, G. & M. Rose. *Manuel de planctologie méditerranéenne*. Éditions du Centre National de la Recherche Scientifique, Paris. T. I. Texte. 587 p. T. II. Illustrations. 207 p.
- WOOD, E. J. F. 1954. Dinoflagellates in the Australian region. *Australian Journal of Marine and Freshwater Research* 5 (2): 171-351.
- WOOD, E. J. F. 1963. *Dinoflagellates in the Australian Region. III. Further collections*. Division of Fisheries and Oceanography, Technical Paper 17, Commonwealth Scientific and Industrial Research Organization, Melbourne, Victoria, Australia. 20 p.
- WOOD, E. J. F. 1968. *Dinoflagellates of the Caribbean Sea and adjacent areas*. University of Miami Press, Coral Gables, FL, USA. 142 p.
- YAMAJI, I. 1966. *Illustrations of the marine plankton of Japan*. Hoikusha Publishing Co., Ltd., Osaka, Japan. 372 p.
- YOON, H. S., J. D. HACKETT & D. BHATTACHARYA. 2002. A single origin of the peridinin and fucoxanthin-containing plastids in dinoflagellates through tertiary endosymbiosis. *Proceedings of the National Academy of Sciences of the United States of America* 99: 11724-11729.
- YOVERA-GALVEZ, F., J. LÓPEZ-HIDALGO, H. RIVERA-CALLE & V. BÁRCENA-MARTÍNEZ. 2020. Microalgas marinas de la zona norte del Perú. Editado por J. C. López-Hidalgo, Dulanto, Callao, Perú. 184 p. Available online at: <https://cedier.org.pe> (searched on 31 July 2022).