



Differences In Hepatic Expression of Iron, Inflammation and Stress-Related Genes in Patients with Nonalcoholic Steatohepatitis

Priya Handa,* Bryan D. Maliken,** James E. Nelson,** Kelly A. Hennessey,* L. Akhila Vemulakonda,* Vicki Morgan-Stevenson,* Barjinder K. Dhillon,** Rohit Gupta,** Matthew M. Yeh,** Kris V. Kowdley*

* Organ Care Research and Liver Care Network, Swedish Medical Center,

** Benaroya Research Institute, *** University of Washington Medical Center, Seattle WA.

ABSTRACT

Nonalcoholic fatty liver disease (NAFLD) is the most common cause of chronic liver disease worldwide. We have previously shown that hepatic reticuloendothelial system (RES) iron deposition is associated with an advanced degree of nonalcoholic steatohepatitis (NASH) in humans. In this study, we aimed to determine differentially expressed genes related to iron overload, inflammation and oxidative stress pathways, with the goal of identifying factors associated with NASH progression. Seventy five patients with NAFLD were evaluated for their biochemical parameters and their liver tissue analyzed for NASH histological characteristics. Gene expression analysis of pathways related to iron homeostasis, inflammation and oxidative stress was performed using real-time PCR. Gene expression was compared between subjects based on disease status and presence of hepatic iron staining. We observed increased gene expression of hepcidin (HAMP) (2.3 fold, $p = 0.027$), transmembrane serine proteinase 6 (TMPRSS6) (8.4 fold, $p = 0.003$), signal transducer and activator of transcription 3 (STAT3) (5.5 fold, $p = 0.004$), proinflammatory cytokines; IL-1 β (2.7 fold, $p = 0.046$) and TNF- α (3.8 fold, $p = 0.001$) in patients with NASH. TMPRSS6, a negative regulator of HAMP, is overexpressed in patients with NASH and HIF1 α (hypoxia inducible factor-1) is downregulated. NAFLD patients with hepatic iron deposition exhibited higher hepcidin expression (3.1 fold, $p = 0.04$) but lower expression of cytokines. In conclusion, we observed elevated hepatic HAMP expression in patients with NASH and in NAFLD patients who had hepatic iron deposition, while proinflammatory cytokines displayed elevated expression only in patients with NASH, suggesting a regulatory role for hepcidin in NAFL to NASH transition and in mitigating inflammatory responses.

Key words. Nonalcoholic fatty liver disease. Nonalcoholic steatohepatitis. Hepcidin. Iron. Inflammation. TMPRSS6.

INTRODUCTION

Nonalcoholic fatty liver disease (NAFLD) is the most prevalent chronic liver disease and is strongly associated with obesity and the attendant metabolic syndrome.¹ NAFLD encompasses a broad spectrum of liver disorders, ranging from simple steatosis to its more severe form, nonalcoholic steatohepatitis (NASH), which progresses to cirrhosis or hepatocellular carcinoma in 20-25% of patients.¹ Oxidative stress is believed to be an important contributor to the pathogenesis of NASH.² Excess hepatic iron can promote oxidative stress via Fenton's reaction and is proposed to be a cofactor in the development of NASH.² We have previously shown that the presence of

hepatic iron and the occurrence of HFE mutations such as C282Y, is associated with more advanced NASH suggesting a role for iron in exacerbating NAFL to NASH.³⁻⁵ Further, we have also shown a strong relationship between hepatic iron deposition pattern and histologic severity of NAFLD wherein iron deposition in hepatic reticuloendothelial system (RES) cells is associated with higher NAFLD activity score (NAS) and advanced fibrosis.⁵ Thus, the involvement of iron in the pathogenesis of NASH underscores the need to better understand the iron homeostasis pathway, with emphasis on the regulatory role of hepcidin, a key iron homeostasis protein.⁶

Hepcidin, produced primarily by hepatocytes, regulates intestinal iron absorption, macrophage iron recycling and

mobilization of iron from hepatic stores by binding and internalizing the iron transporter, ferroportin.⁶ Hcpidin expression is enhanced by increased iron stores via hemojuvelin (HJV), bone morphogenetic protein (BMP6) and Sma and Mad related proteins (SMAD) via HJV/BMP/SMAD pathway⁷ and during inflammation via induction of Janus kinase/Signal transducer and activator of transcription (JAK2/STAT3) pathway,^{8,9} conditions commonly seen in NAFLD.¹⁰ Hcpidin is inhibited by anemia, hypoxia and augmented erythropoiesis via the transcription factor C/EBP α and transmembrane serine protease 6 (TMPRSS6).^{9,11,12-14} Hcpidin regulatory mechanisms have been investigated in animal models and only a few studies have investigated the role of hcpidin in human NAFLD patients,^{10,15-18} and none have examined the regulatory mechanisms of hcpidin expression in patients with NAFLD.

The aim of this study was to examine the expression profiles of iron regulatory genes, and inflammatory and oxidative and other stress-response pathways in patients with NAFLD, with a goal to identify differentially expressed genes in patients who have NASH, and in NAFLD patients with and without hepatic iron overload. Total RNA from liver tissues of patients with NAFLD were analyzed to evaluate expression profiles of candidate genes in the disease states; NAFL *vs.* NASH, and based on presence or absence of observable iron deposition in liver tissue of NAFLD patients.

MATERIAL AND METHODS

Subjects

Patients were enrolled from University of Washington Medical Center and Virginia Mason Medical center clinics in Seattle, WA in the study. The study was approved by the human subjects institutional review board and written informed consents were obtained from all subjects. Inclusion criteria were: minimal alcohol use (< 20 g/day) reported by the patients and appropriate exclusion of other liver diseases including viral hepatitis, autoimmune hepatitis, drug-induced liver disease, primary biliary cirrhosis, Wilson's disease, and α 1-antitrypsin deficiency. Hematoxylin and eosin staining along with Prussian Blue stain specific for iron were used in the grading of the NAS score. All patients met the criteria for NAFLD as defined by Brunt, *et al.*¹⁹

Baseline laboratory studies

Clinical data included body mass index (BMI), presence of diabetes mellitus, serum aminotransferase levels Aspartate transaminase (AST) and Alanine transaminase (ALT), triglycerides, cholesterol, glucose, iron, ferritin and transferrin iron saturation. Liver tissue was obtained

by percutaneous needle biopsy and samples were snap frozen in liquid nitrogen, stored at -70 °C for subsequent RNA extraction and gene expression analysis.

RNA preparation and cDNA synthesis

Total RNA was isolated from liver tissue using RNeasy Mini kit (QIAGEN GmbH, Germany). RNA quality was determined using RNA 6000 Nano Chip Kit and Bioanalyzer 2100 (Agilent Technologies). Samples with a RNA Integrity Number (RIN) value of 4.0 or greater were included for gene expression studies. The cDNA first-strand synthesis was performed using Superscript First-Strand Synthesis System (Invitrogen) and oligo (dT) primers with 1 μ g RNA in 20 μ L reaction volume.

Quantitative real time PCR: Quantitative real time-PCR using SYBR GreenER qPCR super mix (Invitrogen) was performed on the ABI 7900 HT real time PCR machine. Primers were designed to span intronic sequences to avoid amplification of any contaminant genomic DNA. Specific primers were used for RT PCR amplification of HAMP (hepcidin antimicrobial peptide), FPN1 (ferroportin), CREBH (cAMP responsive element-binding protein, hepatocyte specific), IL-6, IL-6R, IL-1 β , TNF α , NF κ B, BMP6 (bone morphogenetic protein), TMPRSS6, SOCS3 (suppressor of cytokine signaling 3), HO-1 (hemeoxygenase 1), HIF1 α (hypoxia inducible factor-1 α) and STAT3 genes and are tabulated (Table 1) and HJV primers obtained from Applied Biosystems were used. 10 μ L of SYBR GreenER qPCR super mix (Invitrogen), 1 μ M of (forward and reverse) primers and 25 ng of the cDNA template were mixed in a 20 μ L reaction volume. Fold change in gene expression was determined by normalization to glyceraldehyde phosphate dehydrogenase (GAPDH).

Serum cytokine analysis

Blood samples from patients were analyzed in duplicates for quantitative measurement of serum cytokines using enzyme-linked immunosorbent assay (ELISA) kit: Bio-Plex Pro Human Cytokine 17-plex Assay (Biorad).

Statistical analysis

Descriptive statistics of continuous variables were expressed as medians with the interquartile range in parentheses. Continuous variables were compared between groups using the Mann-Whitney *U* test for nonparametric data. *p* value < 0.05 was considered to be statistically significant. All statistical analysis was performed using Graphpad Prism 5.03 for Windows, GraphPad Software, San Diego, California, USA.

Table 1. List of primers sequence used for the target genes.

	Gene	Sense Primer	Antisense Primer
1	GAPDH	5'CCACATCGCTCAGACACCAT3'	5'GGCAACAATATCCACTTTACCAGAGT3'
2	HAMP	5'CATCTGCATTTCTGCTGCG3'	5'GTCTTGCAGCACATCCCAC3'
3	FPN1	5'CTTCAGCCTGGCAAGTTACATG3'	5'CTTCTCAAAGGCATTTGAAAGGG3'
4	IL-6	5'GGTACATCCTCGACGGCATCT3'	5'GTGCTCTTTGCTGCTTTAC3'
5	IL-6R	5'ATCGGGCTGAACGGTCAAAG3'	5'GGCGTCGTGGATGACACAG3'
6	TNF α	5'GACAAGCCTGTAGCCCATGT3'	5'TTATCTCTCAGCTCCACGCC3'
7	IL-1 β	5'CCTGTCCTGCGTGTGAAAGA3'	5'GGGAACTGGGCAGACTCAA3'
8	NF κ B	5'CCCCACGAGCTTGTAGGAAAG3'	5'CCAGTTCTGGAACTGTGGAT3'
9	CREBH	5'CTGGTCCTGAGGAATGCAACAG3'	5'CTGGGAGCATAGTCTCTGGCG3'
10	BMP6	5'TGTTGGACACCCGTGTAGTAT3'	5'AACCCACAGATTGCTAGTGCC3'
11	TMPRSS6	5'CCTACAGGGCCGAGTACGAA3'	5'TCAATGCAGCTATGTCTTTCACA3'
12	SOCS3	5'CCTGCGCCTCAAGACCTTC3'	5'GTCAGTGCCTCCAGTAGAA3'
13	STAT3	5'CAGCAGCTTGACACACGGTA3'	5'AAACACCAAAGTGGCATGTGA3'
14	HO-1	AAGACTGCGTTCCCTGCTCAAC	AAAGCCCTACAGCAACTGTCTCG
15	HIF-1 α	AGAACAAAACACACAGCGAAGC	AATCAGCACCAAGCAGGTCATA

RESULTS

Clinical & laboratory characteristics

Patients were divided into groups based on diagnosis of NAFL or NASH by histological variables, or NAFLD patients with or without hepatic iron deposition (presence of stainable iron on liver biopsy samples). Across all patients, the mean patient age was 47 (\pm 9yrs) years, 49% were male, and 67% had a BMI greater than 30 kg/m². There were more females (26/45) ($p = 0.053$) in the NASH group and NASH patients had higher AST ($p = 0.01$) and more severe histological scoring (steatosis, ballooning, inflammation and fibrosis, $p < 0.0001$) (Table 2). Elevated serum ferritin was present in 34% of the patients, 31% had diabetes, 52% had hypertension and 51% had hyperlipidemia.

Analysis revealed that more individuals were males (19/26) ($p = 0.008$) in the cohort defined as NAFLD with hepatic iron. This group also had a significantly lower BMI ($p = 0.03$), CRP ($p = 0.0093$), total iron binding capacity (TIBC) ($p = 0.0498$), Alkaline phosphatase ($p = 0.0128$) and HDL ($p = 0.0287$), and displayed a higher HDL ($p = 0.028$), serum ferritin ($p = 0.0009$), serum iron ($p = 0.0079$), transferrin-iron saturation ($p = 0.0005$), serum albumin ($p = 0.0052$), AST ($p = 0.001$), ALT ($p = 0.0045$), total cholesterol ($p = 0.039$), triglycerides ($p = 0.029$), and LDL ($p = 0.05$) (Table 3).

Increased hepatic gene expression of proinflammatory cytokines in patients with NASH relative to patients with NAFL

Levels of IL-1 β (2.7 fold, $p = 0.046$), STAT3 (5.5 fold, $p = 0.004$) and TNF α (3.8 fold, $p = 0.01$) were upregulated in patients with NASH. While hepatic expression of IL-6,

IL-6R and NF κ B genes were also higher in NASH subjects, statistical significance was not achieved. SOCS3 expression was significantly reduced in patients with NASH (Figure 1A).

Hepcidin and TMPRSS6 expression is increased in patients with NASH

Hepatic gene expression levels of hepcidin (HAMP) were higher (2.3 fold, $p = 0.02$) in patients with NASH compared to NAFL subjects. Analysis of additional iron homeostasis genes within the BMP/SMAD pathway (HJV, FPN and BMP6) did not show significantly elevated expression profile in our patient population, even though HJV expression showed a trend towards increase ($p = 0.06$) (Figure 1B). Interestingly, we observed that the expression of TMPRSS6, a negative regulator of hepcidin expression, was higher in patients with NASH (8.4 fold, $p = 0.003$). We also observed a significantly decreased expression of HIF1 α ($p = 0.004$), a redox sensitive gene, in patients with NASH. Expression of HO-1 and CREBH did not show any statistically significant alterations between the two groups (Figure 1C).

Excess hepatic iron is associated with increased hepcidin and reduced inflammatory cytokine expression in NAFLD patients with stainable iron deposition

A significant increase in hepcidin expression (3.1 fold, $p = 0.04$) was observed in NAFLD patients with histological evidence of stainable hepatic iron compared to NAFLD patients without iron. Expression of IL-1 β (4 fold, $p = 0.06$), TNF α (3 fold, $p = 0.13$), IL-6 (8 fold, $p = 0.008$), NF κ B (5 fold, $p = 0.02$) and SOCS3 (2 fold, $p = 0.07$)

Table 2. Baseline characteristic, values are presented as the median (25th to 75th percentile) for physiologic variable, laboratory values and histological scores.

	Baseline characteristics		p = value
	NAFL (n = 30)	NASH (n = 45)	
Physiological variables			
Age (yrs)	51.00 (44.00-58.00)	47.00 (38.00-56.00)	0.303
Sex	11F/19M	26F/19M	0.053
BMI (kg/m ²)	32.11 (28.60-37.30)	34.75 (29.58-38.06)	0.23
Laboratory values			
CRP (mg/L)	2.90 (1.50-5.10)	3.60 (2.50-10.27)	0.064
Ferritin (µg/L)	131.00 (73.00-363.00)	203.00 (78.25-316.50)	0.58
Serum iron (µg/dL)	75.50 (60.00-93.00)	65.50 (50.00-93.00)	0.38
TIBC	325.00 (298.00-387.00)	356.00 (318.00-387.00)	0.89
Trans Sat (%)	20.40 (13.60-25.90)	19.43 (12.72-26.91)	0.71
Bili (dir) (mg/dL)	0.20 (0.20-0.30)	0.20 (0.10-0.20)	0.065
Alk. Phos. (U/L)	71.50 (63.00-89.00)	78.00 (60.50-96.50)	0.38
AST (U/L)	33.00 (27.00-43.00)	46.00 (33.00-70.00)	0.01
ALT (U/L)	61.50 (43.00-89.00)	75.00 (52.00-132.00)	0.055
Total Chol. (mg/dL)	200.00 (168.00-215.00)	196.50 (166.00-230.75)	0.865
TG (mg/dL)	147.00 (108.00-247.00)	152.00 (98.00-216.00)	0.868
HDL (mg/dL)	36.00 (33.00-45.00)	38.50 (35.25-46.75)	0.315
LDL (mg/dL)	123.00 (109.00-143.00)	110.00 (97.50-149.00)	0.48
Tri/HDL	3.93 (2.50-6.40)	4.05 (2.45-5.83)	0.739
Histological variables			
Steatosis (0-3)	0.00 (0.00-2.25)	2.00 (2.00-3.00)	< 0.0001
Fibrosis (0-6)	1.00 (1.00-2.00)	4.00 (1.50-4.00)	<0.0001
Inflammation (0-3)	0.00 (0.00-0.00)	2.00 (1.00-2.00)	<0.0001
Ballooning (0-2)	2.00 (2.00-4.00)	1.00 (1.00-2.00)	< 0.0001
NAS	0.00 (0.00-0.00)	5.00 (4.00-6.00)	< 0.0001

Statistical significance ($p < 0.05$) was determined by Mann-Whitney U test.

Table 3. Baseline characteristic values of NAFLD patients with or without hepatic iron deposition are presented as medians (25th to 75th percentile) for physiologic variables and laboratory values.

	Baseline characteristics		p-value
	NAFLD - Iron (n = 49)	NAFLD + Iron (n = 26)	
Physiologic variables			
Age(yrs)	48.00 (38.00-56.00)	51.50 (43.75-61.00)	0.13
Sex	29F/19M	7F/19M	0.008
BMI(kg/m ²)	34.70 (30.40-40.40)	30.3 (28.10-35.20)	0.03
Laboratory values			
CRP (mg/L)	3.70 (2.60-3.60)	2.30 (1.40-3.50)	0.0093
Ferritin (µg/L)	98.90 (60.30-241.50)	312.00 (204.00-472.00)	0.0009
Serum Iron (µg/dL)	62.00 (45.30-86.80)	83.50 (70.00-108.80)	0.0079
TIBC	371.00 (324.00-395.00)	320.00 (299.00-363.00)	0.0498
Trans Sat (%)	17.20 (12.10-24.60)	23.30 (21.30-37.30)	0.0005
Alb. (mg/dL)	4.10 (3.90-4.30)	4.30 (4.10-4.50)	0.0052
Bili (dir) (mg/dL)	0.20 (0.10-0.20)	0.20 (0.20-0.40)	0.0385
Alk. Phos. (U/L)	74.50 (63.80-94.30)	70.50 (59.30-86.30)	0.0128
AST (U/L)	38.00 (27.00-52.30)	51.00 (33.50-72.30)	0.0012
ALT (U/L)	62.50 (44.8-104.00)	78.00 (57.50-127.30)	0.0045
Total Chol. (mg/dL)	194.50 (163.00-222.30)	203.50 (185.30-232.30)	0.0399
TG (mg/dL)	149.00 (99.50-220.50)	150.50 (123.80-216.00)	0.0292
HDL (mg/dL)	38.50 (35.00-47.00)	37.00 (34.00-41.00)	0.0287
LDL (mg/dL)	111.00 (97.00-133.50)	127.00 (109.50-152.50)	0.0503
Tri/HDL	4.10 (2.30-6.00)	4.10 (3.10-6.30)	0.0250

Statistical significance ($p < 0.05$) was determined by Wilcoxon Rank sum test, after adjusting for variables such as age, sex and BMI. NAFLD: nonalcoholic fatty liver disease.

were downregulated in NAFLD patients having hepatic iron overload relative to NAFLD patients lacking hepatic iron overload. Of these, hepatic gene expression of IL-6 and NF- κ B were significantly reduced. Further, CREBH, a liver-specific transcription factor which is linked with ER (endoplasmic reticulum) stress, had lower expression (2.5-fold, $p = 0.007$) in NAFLD patients with iron overload. Expression of TMPRSS6 ($p = 0.19$) and STAT3 ($p = 0.97$) were higher in patients who had excess hepatic iron, but not statistically significantly so (Figure 2).

HAMP expression strongly correlates with HJV expression

Linear regression analyses were performed between the various genes that were tested, and among them, the log mRNA expression of HAMP with HJV gene were observed to show a positive association in a statistically significant manner. As expected, the most significant correlation was found in NAFLD subjects with iron overload (r value = 0.718, p value < 0.0001) although a significant relationship was also found in all NAFLD subjects (r value = 0.652, p value < 0.0001) and all NASH subjects (r value = 0.669, p value < 0.0001) for HAMP with HJV (Figure 3).

Serum cytokine analysis in patients with NASH relative to NAFL

Of all the cytokines and chemokines measured, IL-6 (0.7 vs. 3.5 ng/mL, $p = 0.0001$) and IL-8 (2.6 vs. 5.6 ng/mL, $p = 0.003$) were significantly elevated in NASH patients relative to NAFL patients. Notably, there was a significant positive correlation between serum IL-6 cytokine and hepatic IL-6 gene expression ($r = 0.572$, $p < 0.0067$), and between serum IL-6 levels and hepatic hepcidin gene expression ($r = 0.756$, $p < 0.0001$) in NAFL patients, but not in NASH patients or NAFLD patients with or without iron overload. In addition, we observed a positive correlation between serum TNF- α levels and hepatic IL-6 gene expression levels ($r = 0.602$, $p < 0.0038$), and between serum TNF- α levels and hepatic HJV gene expression ($r = 0.771$, $p < 0.0001$) in NAFL patients, but not in NASH patients, or NAFLD patients with iron or without overload. Finally, we observed a positive correlation between serum IL-8 levels and hepatic IL-6 gene expression levels ($r = 0.051$, $p = 0.018$), between serum IL-8 levels and hepatic HJV gene expression ($r = 0.804$, $p < 0.0001$) and in between serum IL-8 levels and hepatic CREBH gene expression ($r = 0.497$, $p = 0.021$) in NAFL patients, but not in NASH patients, or NAFLD patients with or without iron overload.

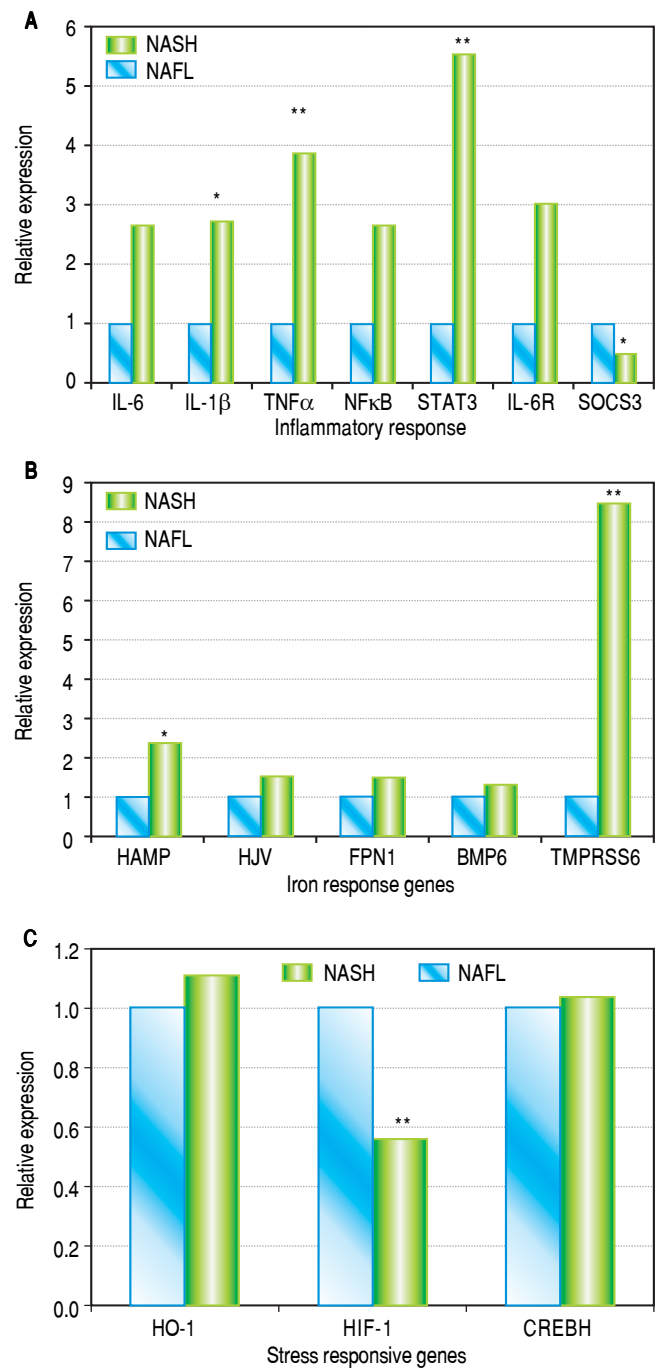


Figure 1. A. Hepatic mRNA expression of IL-6, IL-1 β , TNF, NF κ B, STAT3, IL-6R and SOCS3 in patients with NASH compared to patients with NAFL. p values: IL-6: 0.15, IL-1 β : 0.046, TNF α : 0.001, NF κ B: 0.203, STAT3: 0.004, IL-6R: 0.12, SOCS3: 0.012. **B.** Hepatic mRNA expression of HAMP, HJV, FPN1, BMP6 and TMPRSS6 in patients with NASH compared to patients with NAFLD. p values: HAMP: 0.02, HJV: 0.06, FPN: 0.22, BMP6: 0.28, TMPRSS6: 0.004. **C.** Hepatic mRNA expression of HO-1, HIF-1 and CREBH in patients with NASH compared to patients with NAFL. p values: HO-1: 0.89, HIF-1: 0.004 and CREBH: 0.85. All values are shown as medians and statistical significance ($p < 0.05$) is marked * and $p < 0.01$ is marked **.

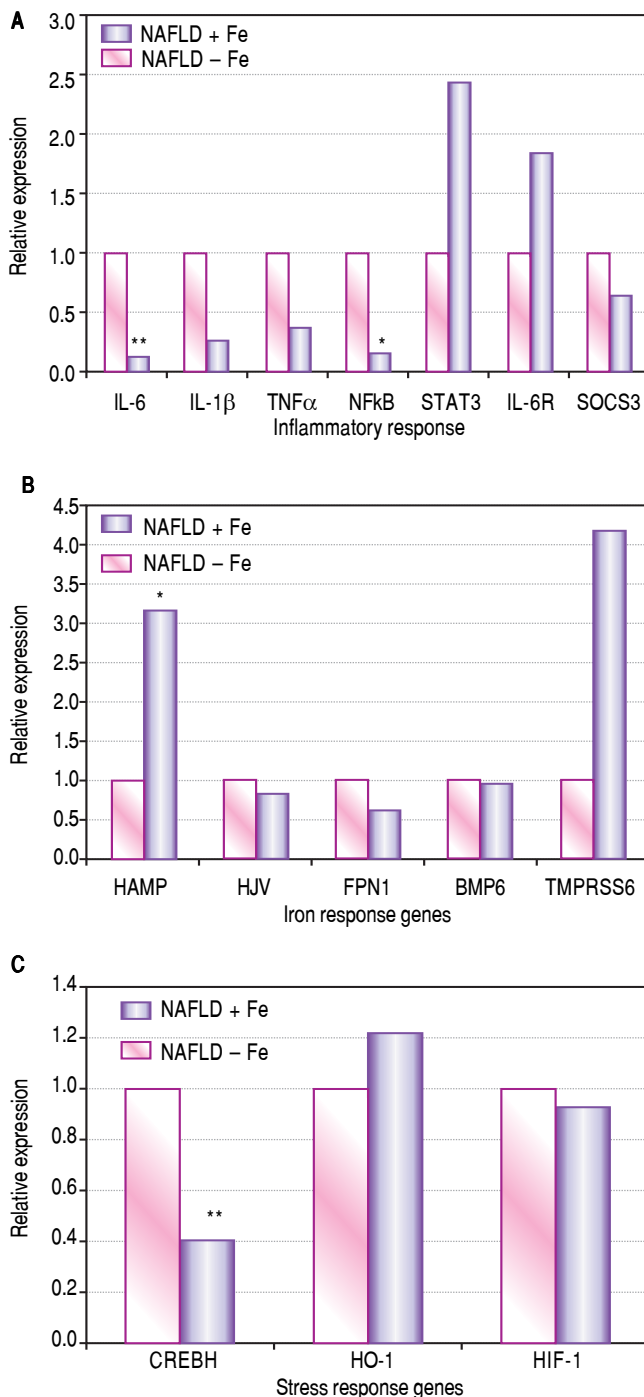


Figure 2. Effects of excess iron in patients with NAFLD. Hepatic mRNA expression of: **A.** Inflammatory markers IL-6, IL-1 β , TNF α , NF κ B, STAT3, IL-6R and SOCS3 (*p* values; IL-6: 0.008, IL-1 β : 0.06, TNF α : 0.13, NF κ B: 0.02, STAT3: 0.97, IL-6R: 0.29, SOCS3: 0.07). **B.** Iron regulatory genes HAMP, HJV, FPN1, BMP6 and TMPRSS6 (*p* values; HAMP: 0.04, HJV: 0.16, FPN1: 0.51, BMP6: 0.47 and TMPRSS6: 0.19), and **C.** Stress-responsive genes CREBH, HO-1 and HIF-1 α (*p* values; CREBH: 0.007, HO-1: 0.66 and HIF-1 α : 0.35) in NAFLD + iron patients compared to NAFLD-iron patients. All values are shown as medians and statistical significance (*p* < 0.05) marked* and *p* < 0.01 is marked.**

DISCUSSION

The goal of this study was to identify differential expression of genes involved in iron regulation, inflammation and stress response in patients with NASH compared to NAFL. This information is crucial towards identifying factors that contribute to progression of fatty liver disease. Evidence continues to accumulate strengthening the clinicopathologic correlation between hepatic iron deposition and more specifically, its deposition pattern and progression of NAFL to NASH. Iron deposition within hepatic RES cells was found to be an independent predictor of worsening fibrosis and advanced liver disease (higher NAS score) in patients with NAFLD.⁵ Hepcidin is an important regulator of inflammation in the liver^{9,16} and along with its key role in iron homeostasis,⁶ it could be playing a vital part in NASH pathogenesis. We hypothesized that hepcidin and/or its upstream regulatory factors play a key role in progression of NAFL to NASH. Conflicting data exists regarding hepatic hepcidin expression in NAFLD where both a decreased²⁰ and increased expression pattern has been reported^{10,21} compared to controls. In our patient population, hepatic hepcidin expression was significantly elevated in patients with NASH compared to NAFL. Taken together with the increased hepatic gene expression of inflammatory cytokines IL-6, IL-1 β and TNF α , it is plausible that there is increased hepcidin expression that is attributable to its stimulation by IL-6 through the JAK2/STAT3 pathway.^{9,22-25} Furthermore, the reduced gene expression of HIF1 α , a hypoxia-inducible negative regulator of hepcidin,⁹ could have also contributed to the upregulation of hepcidin expression in the NASH patient population.

Hepcidin expression was also found to be higher in patients with hepatic iron deposition which constitutes a physiological response of the liver to decreased circulating iron levels.^{15,16} High ferritin and low expression of hepatic inflammatory cytokines (IL-6; 8 fold, IL-1 β ; 4 fold, and NF κ B; 5 fold) in patients with NAFLD containing hepatic iron deposition could possibly be suggestive of the notion that in this cohort the increased hepcidin expression is more likely attributable to hepatic iron deposition rather than inflammation. In our patient population, we did not observe upregulation of SOCS3, a known negative regulator of the JAK2/STAT3 signaling pathway²⁶ and thereby of hepcidin, raising the possibility of other mechanisms distinct from SOCS3 being involved in suppression of inflammatory response. CREBH, a negative regulator of hepatic lipogenesis and a marker of ER stress, was reduced in NAFLD patients with hepatic iron deposition. This finding is consistent with previous reports that hepatic iron directly results in excess hepatic lipid load.

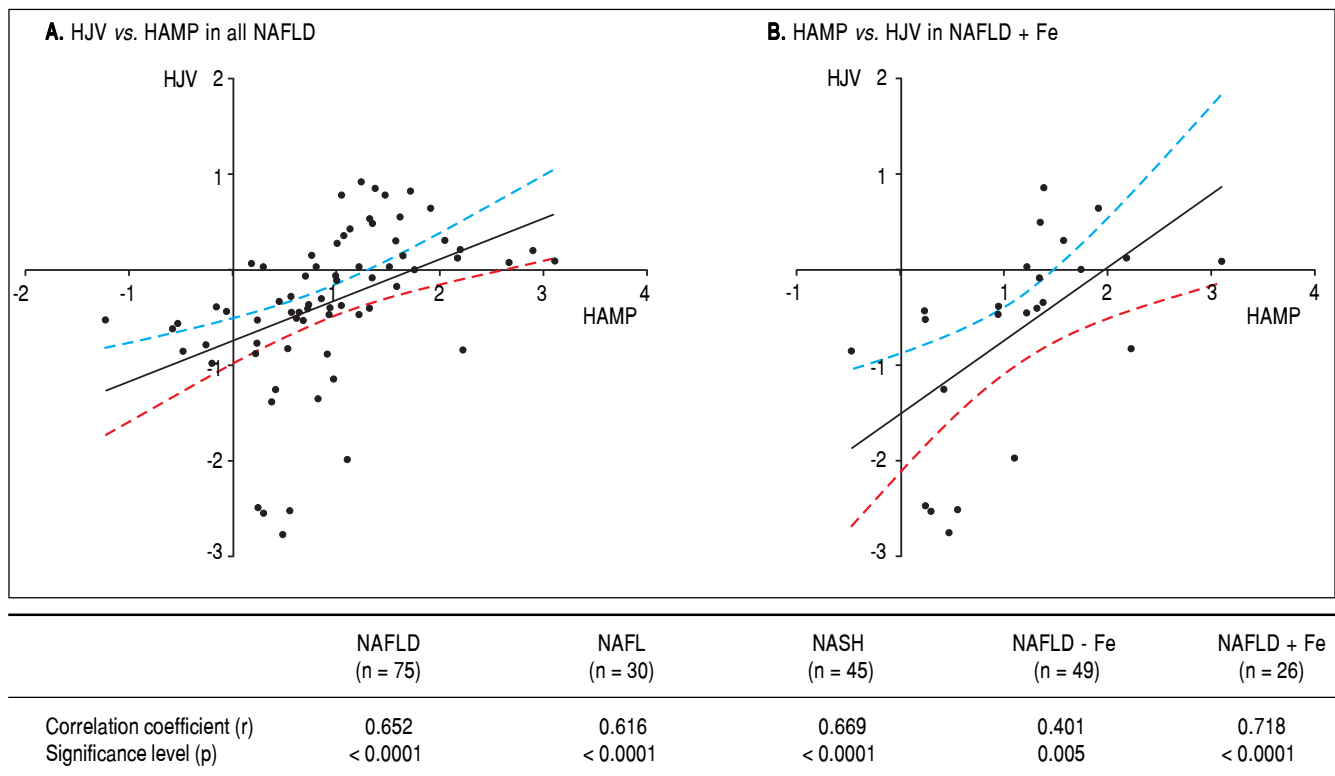


Figure 3. Linear regression in all NAFLD subjects (n = 75) are shown in (A) and in NAFLD patients with hepatic iron overload (NAFLD + Fe) (n = 26) (B). The regression line obtained with best fitted values and 95% confidence interval is shown. The table shows correlation coefficients between the log hepcidin mRNA and HJV mRNA in the various study groups. The r and p values are shown for each correlation and linear regression analysis. Since multiple analyses were performed, the cutoff was adjusted based on the Bon Ferroni equation to p < 0.01.

Similar to hepcidin, HJV is detected predominantly in hepatocytes.^{28,29} We found a strong association between hepcidin and hemojuvelin mRNA levels in NAFLD patients with hepatic iron deposition, reinforcing its role in hepcidin regulation. HJV plays a central role by interacting with BMP6, TMPRSS6 (also known as matriptase-2), and neogenin, in the regulation of hepatic hepcidin expression.³⁰ Expression of TMPRSS6, a negative feedback inhibitor of hepcidin expression,¹¹ was significantly higher in patients with NASH compared to NAFL. TMPRSS6 functions to suppress BMP-mediated stimulation of hepcidin transcription through cell surface proteolytic processing of the BMP co-receptor, HJV. Increased expression of TMPRSS6 in our NAFLD patient population likely represents a potential mechanism involved in the regulation of hepcidin.

Hepatic HAMP gene expression is induced in patients with NASH compared to NAFL, and presumably in response to hepatic iron excess in NAFLD patients with iron overload. Two possible mechanisms for hepcidin expression in patients with NASH are likely IL-6-mediated stimulation of JAK2/STAT3 pathway, which results in up-regulation of hepcidin and reduced gene expression of

HIF1 α . Furthermore, increased hepatic STAT3 gene expression in NASH patients relative to NAFL patients lends support to this putative hypothesis.

Iron deposition in livers of patients with NAFLD can be hepatocellular, reticuloendothelial, or both. A study of 849 adult biopsy specimens, performed in the United States by us, observed that reticuloendothelial patterns of iron deposition was associated with advanced fibrosis compared with hepatocellular iron. Biopsy specimens with reticuloendothelial iron were also more likely to have definite steatohepatitis.⁵ However, an Italian study of 587 patients with NAFLD found that hepatocellular rather than reticuloendothelial iron was associated with an increased likelihood of fibrosis.³¹ The discordant results may be explained by differences in the patient populations; the subjects in the US study were more ethnically diverse and had higher body mass indices and more advanced fibrosis than those in the Italian study. Interactions between iron metabolism and NAFLD are complex and under active investigation by others and us.

In this study, we found increased expression levels of in hepcidin in both NAFLD patients with iron and NASH patients. In our studies, the increased hepcidin levels mit-

igate inflammatory responses through a different pathway other than the well-studied SOCS3 mechanism. Though there is an increase in hepcidin levels in NASH patients, which could be in response to hepatic iron or increase in IL-6/STAT3 or decrease in HIF1 α , or a combination of these influences, we believe that increase in TMPRSS6, a negative regulator of hepcidin, could have hindered the anti-inflammatory properties of hepcidin and contributed to the transition of NAFL to NASH. However, further studies are required to confirm the anti-inflammatory role of hepcidin, to identify the pathway by which it mitigates the inflammatory response and to identify the mechanism by which TMPRSS6 influences hepcidin expression and interferes with its anti-inflammatory effect in NASH patients. We propose that further studies in a larger independent cohort would increase our understanding of the pathogenesis of NASH and possible pharmacological solutions. Further, undertaking an unbiased approach and performing RNA-seq on NAFL/NASH/ NAFLD with iron overload populations will allow us to uncover novel regulatory proteins associated with this complex disease.

While this study has provided us with a number of important insights regarding the regulatory pathways such as iron homeostatic pathways, inflammation and stress responses that could be influencing NAFL to NASH pathogenesis and provided us with information about pathways that could be targeted, there are several limitations of the study, in that, we did not perform an *a priori* power calculation, since we had sufficient numbers of patients to perform a powered study. In addition, we did not record the intake of iron from both dietary sources and supplements. No information was collected on other medication and diseases that may affect iron metabolism. Our study is also limited by the lack of serum hepcidin measurements and HFE genotyping, which may have provided additional valuable insights into hepatic iron regulation in our patient population.

In conclusion, we observed that HAMP expression is elevated in NASH patients and in NAFLD patients with hepatic iron deposits. Our data allowed us to study the interdependence of various regulatory signals such as hepatic iron stores, inflammation and hypoxia or oxidative/ER stress on the expression of hepcidin and inflammatory cytokines. It is likely that the increased hepcidin expression is a protective response, which attempts to sequester excess iron thereby reducing oxidative stress. This effect might also play a role in mitigating the inflammatory response as seen in our NAFLD patients with hepatic iron overload. Examination of hepcidin regulatory mechanisms in a larger patient population will help us to understand the pathogenesis of NASH and in turn help identify potential 'druggable' targets to halt its progression.

ABBREVIATIONS

- **ALT:** alanine transaminase.
- **AST:** aspartate transaminase.
- **BMI:** body mass index.
- **BMP:** bone morphogenetic protein.
- **CREBH:** cAMP responsive element-binding protein, hepatocyte specific.
- **ER:** endoplasmic reticulum.
- **FPN:** ferroportin.
- **GAPDH:** glyceraldehyde phosphate dehydrogenase.
- **HAMP:** hepatic antimicrobial peptide.
- **HIF1 α :** hypoxia inducible factor 1 α .
- **HJV:** hemojuvelin.
- **HNE:** 4-hydroxy-2-nonenal.
- **HO-1:** hemoxygenase 1.
- **JAK:** Janus kinase.
- **MDA:** malondialdehyde.
- **NAFL:** nonalcoholic fatty liver.
- **NAFLD:** nonalcoholic fatty liver disease.
- **NAS:** NAFLD activity score.
- **NASH:** nonalcoholic steatohepatitis.
- **PUFAs:** polyunsaturated fatty acids.
- **RES:** Reticuloendothelial system.
- **SMAD:** Sma and Mad related proteins.
- **SOCS3:** suppressor of cytokine signaling 3.
- **STAT3:** signal transducer and activator of transcription 3.
- **TIBC:** total iron binding capacity.
- **TMPRSS6:** transmembrane serine protease 6.

REFERENCES

1. Rinella ME. Nonalcoholic fatty liver disease: a systematic review. *JAMA* 2015; 313: 2263-73.
2. Nelson JE, Klintworth H, Kowdley KV. Iron metabolism in Nonalcoholic Fatty Liver Disease. *Curr Gastroenterol Rep* 2012; 14: 8-16.
3. Nelson JE, Brunt EM, Kowdley KV. Nonalcoholic Steatohepatitis Clinical Research Network. Lower serum hepcidin and greater parenchymal iron in nonalcoholic fatty liver disease patients with C282Y HFE mutations. *Hepatology* 2012; 56: 1730-40.
4. Nelson JE, Bhattacharya R, Lindor KD, Chalasani N, Raaka S, Heathcote EJ, Miskovsky E, et al. HFE C282Y mutations are associated with advanced hepatic fibrosis in Caucasians with nonalcoholic steatohepatitis. *Hepatology* 2007; 46: 723-9.
5. Nelson JE, Wilson L, Brunt EM, Yeh MM, Kleiner DE, Unalp-Arida A, Kowdley KV. Relationship between the pattern of hepatic iron deposition and histological severity in nonalcoholic fatty liver disease. *Hepatology* 2011; 53: 448-57.
6. Nemeth E, Tuttle MS, Powelson J, Vaughn MB, Donovan A, Ward DM, Ganz T, et al. Hepcidin regulates cellular iron efflux by binding to ferroportin and inducing its internalization. *Science* 2004; 306: 2090-3.
7. Babitt JL, Huang FW, Wrighting DM, Xia Y, Sidis Y, Samad TA, Campagna JA, et al. Bone morphogenetic protein signal-

- ing by hemojuvelin regulates hepcidin expression. *Nat Genet* 2006; 38: 531-9.
8. Verga Falzacappa MV, Vujic SM, Kessler R, Stolte J, Hentze MW, Muckenthaler MU. STAT3 mediates hepatic hepcidin expression and its inflammatory stimulation. *Blood* 2007; 109: 353-8.
 9. Nicolas G, Chauvet C, Viatte L, Danan JL, Bigard X, Devaux I, Beaumont C, et al. The gene encoding the iron regulatory peptide hepcidin is regulated by anemia, hypoxia, and inflammation. *J Clin Invest* 2002; 110: 1037-44.
 10. Zimmermann A, Zimmermann T, Schattenberg J, Pottgen S, Lotz J, Rossmann H, Roeddiger R, et al. Alterations in lipid, carbohydrate and iron metabolism in patients with non-alcoholic steatohepatitis (NASH) and metabolic syndrome. *Eur J Intern Med* 2011; 22: 305-10.
 11. Nai A, Pagani A, Silvestri L, Camprostrini N, Corbella M, Girelli D, Traglia M. TMPRSS6 rs855791 modulates hepcidin transcription in vitro and serum hepcidin levels in normal individuals. *Blood* 2011; 118: 4459-62.
 12. Choi SO, Cho YS, Kim HL, Park JW. ROS mediate the hypoxic repression of the hepcidin gene by inhibiting C/EBPalpha and STAT-3. *Biochem Biophys Res Commun* 2007; 356: 312-7.
 13. Pinto JP, Ribeiro S, Pontes H, Thowfeequ S, Tosh D, Carvalho F, Porto G. Erythropoietin mediates hepcidin expression in hepatocytes through EPOR signaling and regulation of C/EBPalpha. *Blood* 2008; 111: 5727-33.
 14. Harrison-Findik DD, Schafer D, Klein E, Timchenko NA, Kulaksiz H, Clemens D, Fein E, et al. Alcohol metabolism-mediated oxidative stress down-regulates hepcidin transcription and leads to increased duodenal iron transporter expression. *J Biol Chem* 2006; 281: 22974-82.
 15. Aigner E, Theurl I, Theurl M, Lederer D, Haufe H, Dietze O, Strasser M, et al. Pathways underlying iron accumulation in human nonalcoholic fatty liver disease. *Am J Clin Nutr* 2008; 87: 1374-83.
 16. Barisani D, Pelucchi S, Mariani R, Galimberti S, Trombini P, Fumagalli D, Meneveri R, et al. Hepcidin and iron-related gene expression in subjects with Dysmetabolic Hepatic Overload. *J Hepatol* 2008; 49: 123-33.
 17. Bekri S, Gual P, Anty R, Luciani N, Dahman M, Ramesh B, Iannelli A, et al. Increased adipose tissue expression of hepcidin in severe obesity is independent from diabetes and NASH. *Gastroenterology* 2006; 131: 788-96.
 18. Demircioglu F, Gorunmez G, Dagistan E, Goksugur SB, Bekdas M, Tosun M, Kizildag B, et al. Serum hepcidin levels and iron metabolism in obese children with and without fatty liver: case-control study. *Eur J Pediatr* 2014; 173: 947-51.
 19. Brunt EM, Kleiner DE, Wilson LA, Belt P, Neuschwander-Tetri BA; NASH Clinical Research Network (CRN). Nonalcoholic fatty liver disease (NAFLD) activity score and the histopathologic diagnosis in NAFLD: distinct clinicopathologic meanings. *Hepatology* 2011; 53: 810-20.
 20. Mitsuyoshi H, Yasui K, Harano Y, Endo M, Tsuji K, Minami M, Itoh Y, et al. Analysis of hepatic genes involved in the metabolism of fatty acids and iron in nonalcoholic fatty liver disease. *Hepatology* 2009; 39: 366-73.
 21. Senates E, Yilmaz Y, Colak Y, Ozturk O, Altunoz ME, Kurt R, Ozkara S, et al. Serum levels of hepcidin in patients with biopsy-proven nonalcoholic fatty liver disease. *Metab Syndr Relat Disord* 2011; 9: 287-90.
 22. Wrighting DM, Andrews NC. Interleukin-6 induces hepcidin expression through STAT3. *Blood* 2006; 108: 3204-9.
 23. Pietrangolo A, Dierssen U, Valli L, Garuti C, Rump A, Corradini E, Ernst M, et al. STAT3 is required for IL-6-gp130-dependent activation of hepcidin in vivo. *Gastroenterology* 2007; 132: 294-300.
 24. Blanchette NL, Manz DH, Torti FM, Torti SV. Modulation of hepcidin to treat iron deregulation: potential clinical applications. *Expert Rev Hematol* 2016; 9: 169-86.
 25. Zhao N, Zhang AS, Enns CA. Iron regulation by hepcidin. *J Clin Invest* 2013; 123: 2337-43.
 26. De DI, Zhang TY, Koenig CL, Branch RW, London N, Lo E, Daynes RA, et al. Hepcidin mediates transcriptional changes that modulate acute cytokine-induced inflammatory responses in mice. *J Clin Invest* 2010; 120: 2395-405.
 27. Cabrita M, Pereira CF, Rodrigues P, Cardoso EM, Arosa FA. Altered expression of CD1d molecules and lipid accumulation in the human hepatoma cell line HepG2 after iron loading. *FEBS J* 2005; 272: 152-65.
 28. Niederkofler V, Salie R, Arber S. Hemojuvelin is essential for dietary iron sensing, and its mutation leads to severe iron overload. *J Clin Invest* 2005; 115: 2180-6.
 29. Zhang AS, Yang F, Wang J, Tsukamoto H, Enns CA. Hemojuvelin-neogenin interaction is required for bone morphogenic protein-4-induced hepcidin expression. *J Biol Chem* 2009; 284: 22580-9.
 30. Zhang AS, Gao J, Koeberl DD, Enns CA. The role of hepatocyte hemojuvelin in the regulation of bone morphogenic protein-6 and hepcidin expression in vivo. *J Biol Chem* 2010; 285: 16416-23.
 31. Valenti L, Fracanzani AL, Bugianesi E, Dongiovanni P, Galmozzi E, Vanni E, Canavesi E, et al. HFE genotype, parenchymal iron accumulation, and liver fibrosis in patients with nonalcoholic fatty liver disease. *Gastroenterology* 2010; 138: 905-12.

Correspondence and reprint request:

Kris V. Kowdley, M.D.
Swedish Liver Care Network and Organ Care Research.
Swedish Medical Center.
1124 Columbia St., Suite 600. Seattle, WA 98104.
Tel.: 206-386-3606. Fax: 206-215-2126
E-mail: kris.kowdley@swedish.org